




Matheson

“ Silent Six ”

Built for those who use the best.

Matheson Automobile Company, Wilkes-Barré, Penna.

 THE "SILENT SIX" MATHESON CAR is expressly "*built for those who use the best*" by skilled mechanics, who have been trained to take pride in working with a precision and accuracy and thoroughness which stamp the "Silent Six" a car of exceptional merit and craftsmanship.

It is now in its third successful season and is built by a Company whose experience in the successful development and manufacture of exclusively high grade motor cars covers a period of more than fifteen years.

It has speed and power beyond need and is yet so quiet in operation as to justify its name, the "Silent Six." Also, the conditions which produce its smooth, quiet running qualities result in minimizing the cost of mechanical up-keep and of fuel and oil consumption to an extent not equalled, to our knowledge, by any other six-cylinder car on the market.

Series "B" and Series "C" models differ mainly in body types and equipment and some chassis refinements.

Series "C" Roadster and closed body models are equipped with especially handsome bodies, having deep, restful cushions and a refinement of details and richness of finish not to be found outside of such well-known houses as Brewster & Company and J. M. Quinby & Company, which produce these bodies for us exclusively as "Silent Six" equipments. They are the latest and most luxurious examples of the art.

As compared with all other six cylinder cars of like motor and chassis dimensions, we believe the "Silent Six" to be superior in the following important respects:

- (1) It is the most SILENT in operation.
- (2) It is the lightest in weight per horsepower.
- (3) Its motor develops the most power.
- (4) It has the largest bearing surfaces.
- (5) It is the most flexible—can throttle down to a rate of three miles per hour in high gear, with 3 to 1 gear ratio, without missing, without jerking and without slipping the clutch.
- (6) Its mileage per gallon of gasoline is greater.
- (7) Its mileage per gallon of lubricating oil is greater.
- (8) Its mileage per set of tires is greater (owing to its lighter weight, perfect balance and multiple-disc clutch).
- (9) It has the most reliable and indestructible clutch (multiple-disc).
- (10) It has the strongest and most responsive, irreversible, full ball bearing steering gear.
- (11) It has the easiest riding qualities.
- (12) It has the strongest transmission and rear axle construction.
- (13) It has the best designed straight line drive through a fully encased universal.
- (14) It has the most dependable interlocking device in conjunction with selective transmission.
- (15) It has the handsomest lines of design, the body is luxuriously upholstered and the whole car is superbly finished and equipped.

SPECIFICATIONS

All "Silent Six" models, Series "B" and "C" are the same in the following details:

HORSEPOWER RATING, 50
 BORE AND STROKE, 4½ x 5
 IGNITION, Double. Jump Spark
 CURRENT SOURCE, Bosch 6-Magnet Independent Magneto for one set of spark plugs. Storage battery for second set of spark plugs
 GASOLINE FEED, pressure
 GASOLINE TANK—LOCATION AND CAPACITY, suspended under rear of frame, 22 gallons. Speedster and roadster tanks back of driver's seat, 36 gallons capacity gasoline and 6 gallons reserve lubricating oil
 LUBRICATING SYSTEM, splash and pump from oil well in engine base
 CLUTCH, multiple disc

TRANSMISSION—TYPE AND LOCATION, selective, on rear axle
 DRIVE, shaft, 3 speeds forward
 AXLE—FRONT, I-beam, nickel steel forging
 AXLE—REAR, full floating
 TREAD, 56 ½"
 WHEELS—FRONT, 36"
 WHEELS—REAR, 36"
 WHEEL BEARINGS—FRONT, roller
 WHEEL BEARINGS—REAR, annular ball
 SPRINGS, electro-silico manganese steel

EQUIPMENT

Series "B"

Extension Top with Envelope (Touring Cars only)
 Reed Horn
 Three Oil Side and Tail Lamps
 Two Head Gas Lamps
 Prest-O-Lite Tank, concealed
 Three Oil Cans attached to motor base
 Oil Gun, Jack, Tire Pump, and full set of tools
 Tire Carriers attached to side of car
 Coat and Blanket Rail
 Folding Foot Rest
 Baggage Rack
 Foot Scrapers

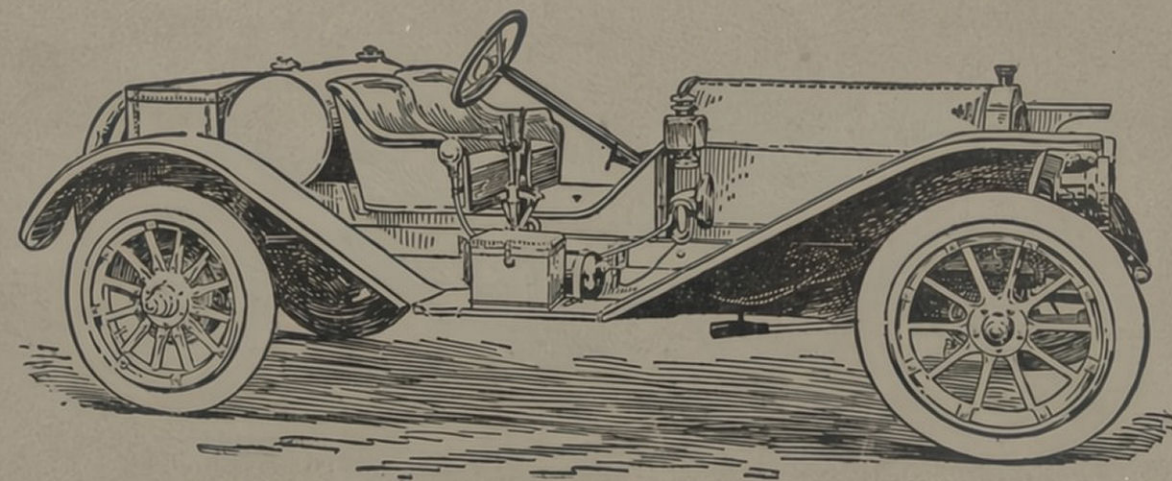
Series "C"

Extension Top with Envelope (Touring C and Roadsters only)
 Clear-vision Folding Glass Front
 Warner Speedometer, model K2.
 Klaxon Horn with storage battery

Reed Horn
 Power Air Pump for inflating tires
 Gasoline Gauge
 Three Combination Electric and Oil Side and Tail Lamps with storage battery and three switches
 Inspection Electric Lamp with ten feet of cord
 Two Head Gas Lamps
 Prest-O-Lite Tank, concealed
 Three Oil Cans attached to motor base
 Oil Gun, Jack, Tire Pump and full set of tools
 Two Shock Absorbers on rear springs
 Tire Carriers attached to rear of car
 Coat and Blanket Rail
 Folding Foot Rest
 Yale Locks with universal key for tool and storage compartments and hood
 Baggage compartments
 Two Sole Leather Suit Cases in compartment under front seats of Touring Car and in trunk of Roadster
 Foot Scrapers

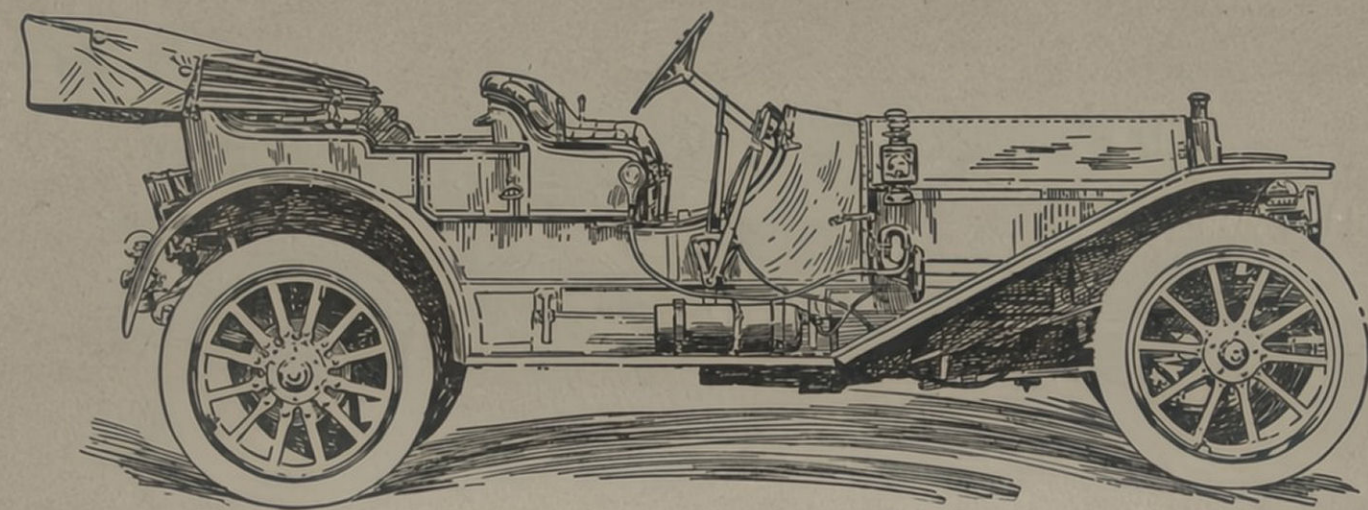
PRICES

	Series "B"	Series "C"	Series "B"
Touring, 7 Passengers	\$4,000	\$4,800	\$4,700
Touring, 5 Passengers	3,750		
Speedster, 2 Passengers	3,750		
Roadster, 2 Passengers		4,500	
Toy Tonneau, 4 Passengers	3,500		
Town Car, 6 Passengers			\$4,700
Cruiser, 4 Passengers			4,000 (Special)
Limousine, 7 Passengers			6,700 (Special)
Extension Top Landaulet, 7 Passengers			6,500 (Special)
Berline-Limousine, 7 Passengers			6,500 (Special)



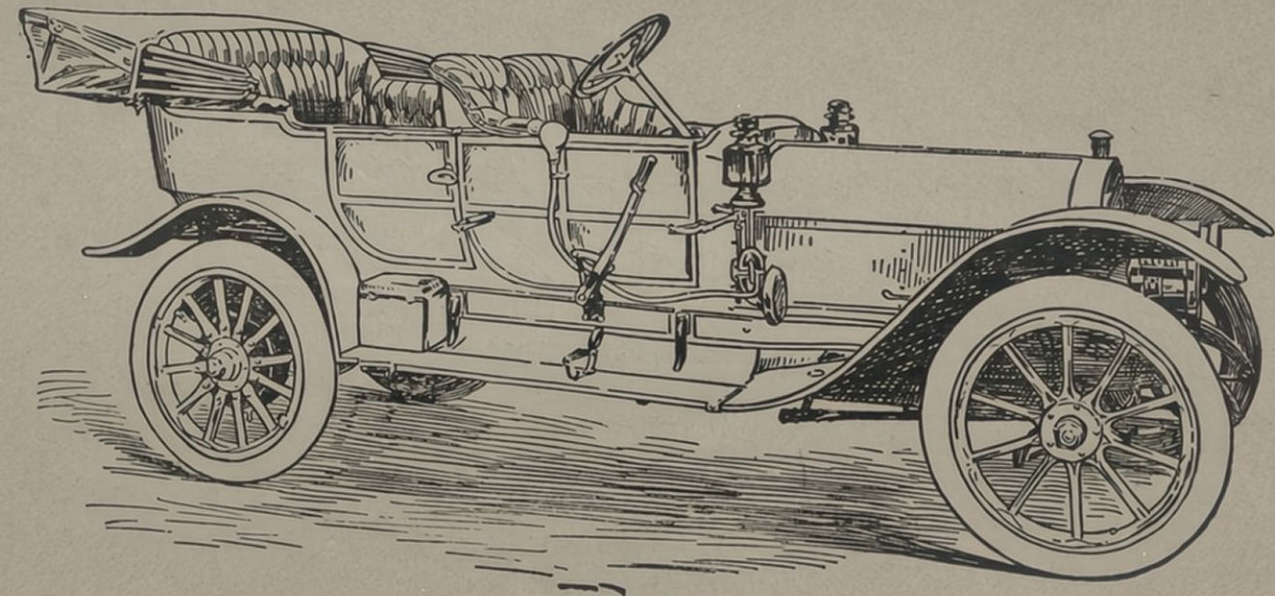
Wheel base, 125½ inch.
Gear ratio, 2¾ to 1.
Tires, 36 x 4½, front and rear.
Rims, Continental clincher demountable.

SERIES "B"
SPEEDSTER
SEATS TWO
\$3,750



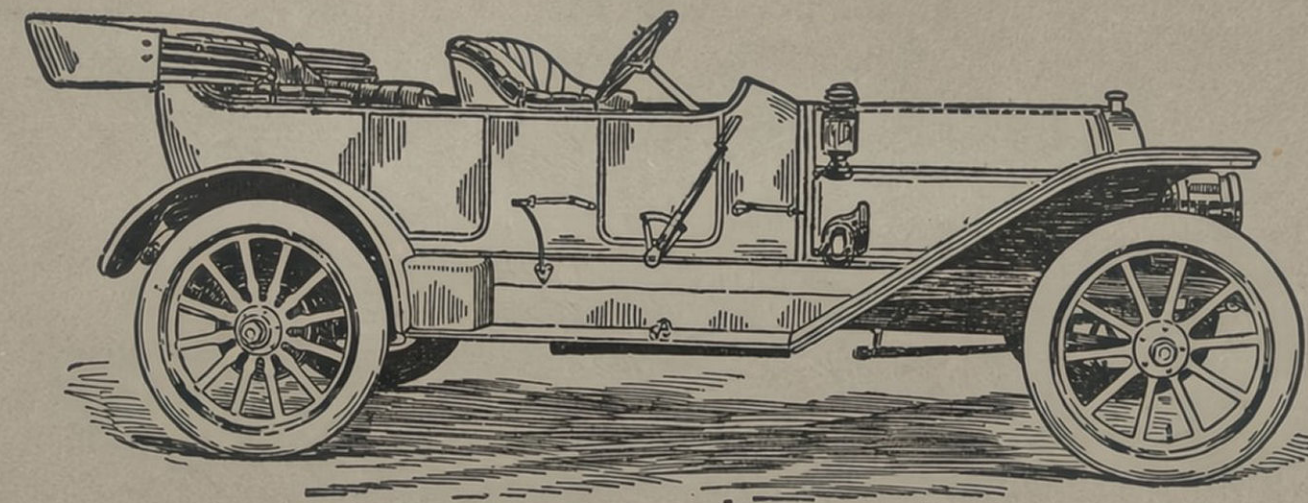
Wheel base, 125½ inch.
Gear ratio, 2¾ to 1.
Tires, 36 x 4 front; 36 x 4½ rear.
Rims, Marsh quick detachable.

SERIES "B"
TOY TONNEAU
SEATS FOUR
\$3,500



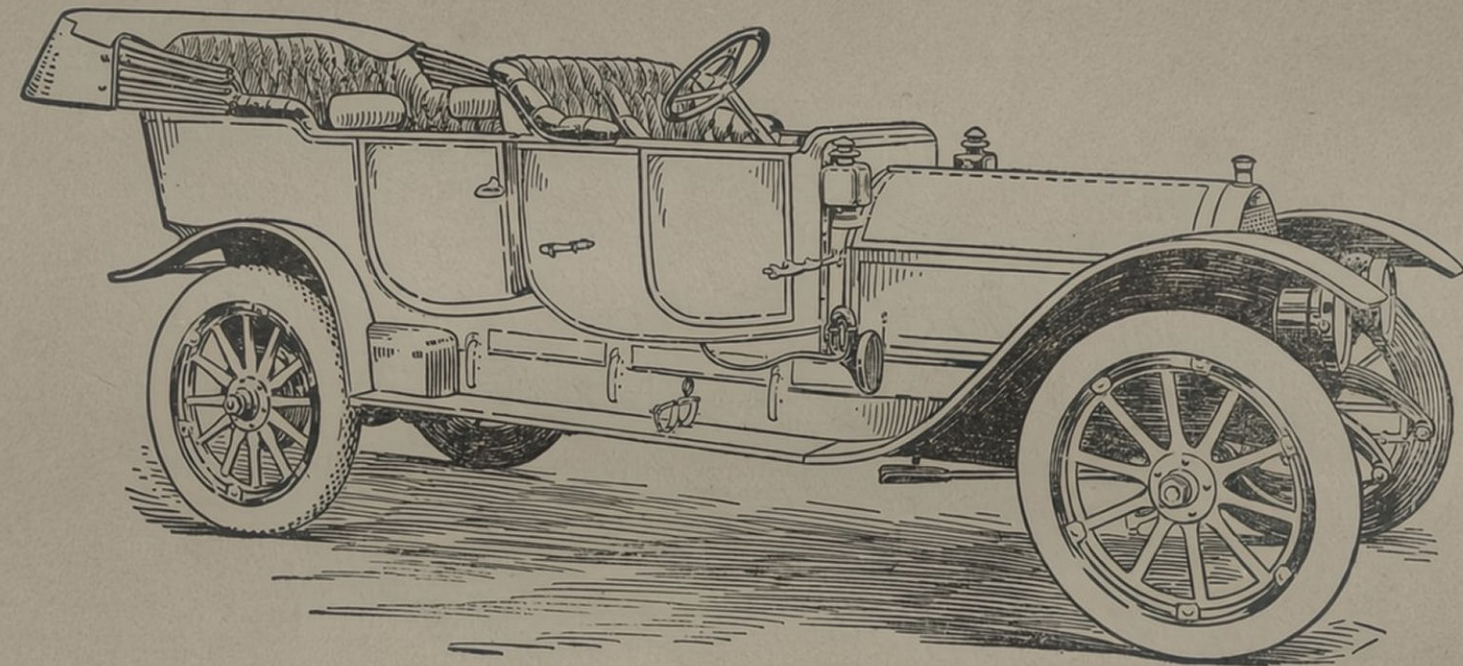
Wheel base, 125½ inch.
Gear ratio, 3 to 1.
Tires, 36 x 4 front; 36 x 4½ rear.
Rims, Marsh quick detachable.

SERIES "B"
TOURING
SEATS FIVE
\$3,750



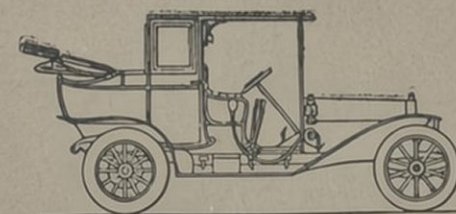
Wheel base, 125½ inch.
Gear ratio, 2¾ to 1.
Tires, 36 x 4 front; 36 x 4½ rear.
Rims, Marsh quick detachable.

SERIES "B"
CRUISER (Special)
SEATS FOUR
\$4,000

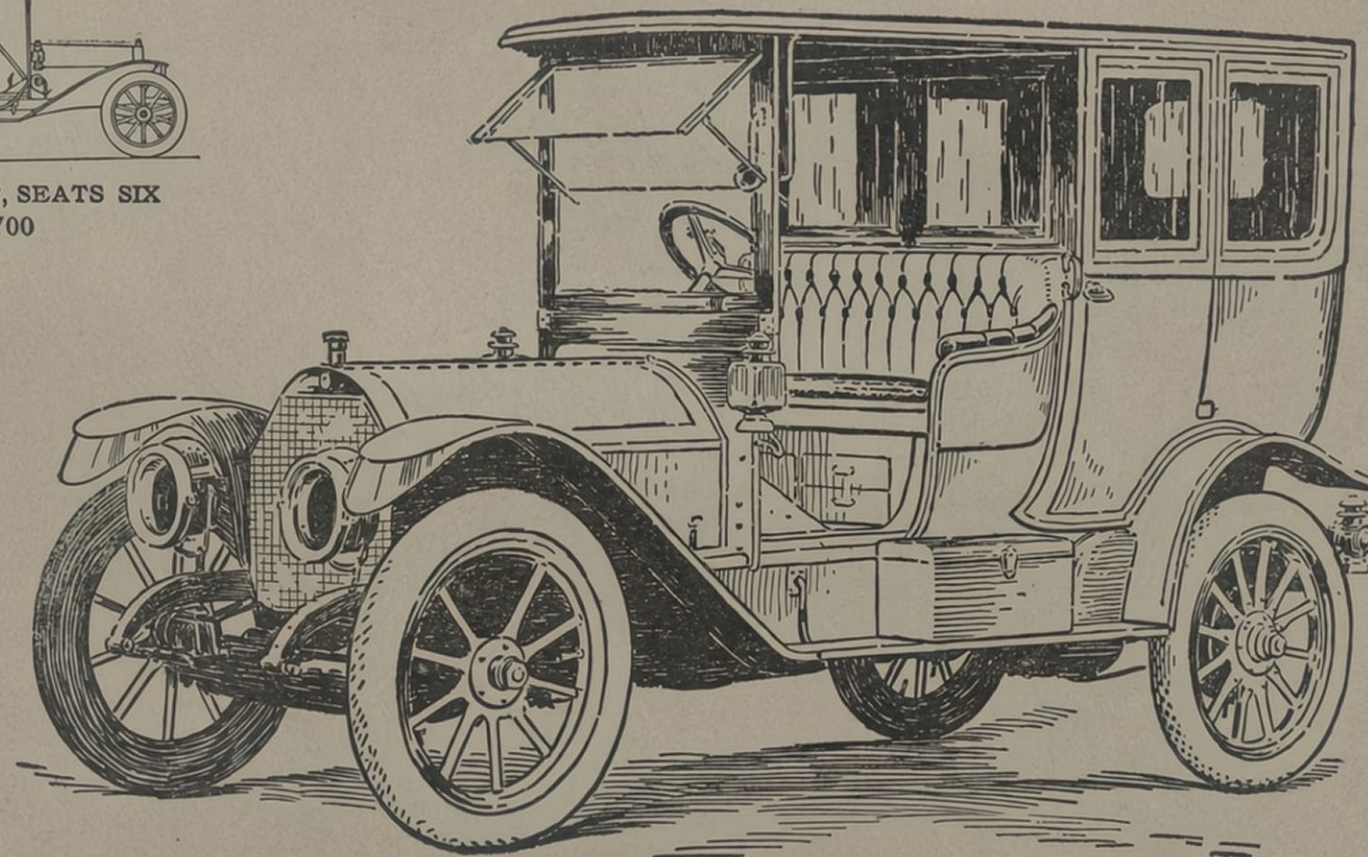


Wheel base, 135 inch.
Gear ratio, $3\frac{1}{4}$ to 1.
Tires, 36 x $4\frac{1}{2}$ front and rear.
Rims, Continental clincher demountable.

SERIES "B"
TOURING
SEATS SEVEN
\$4,000



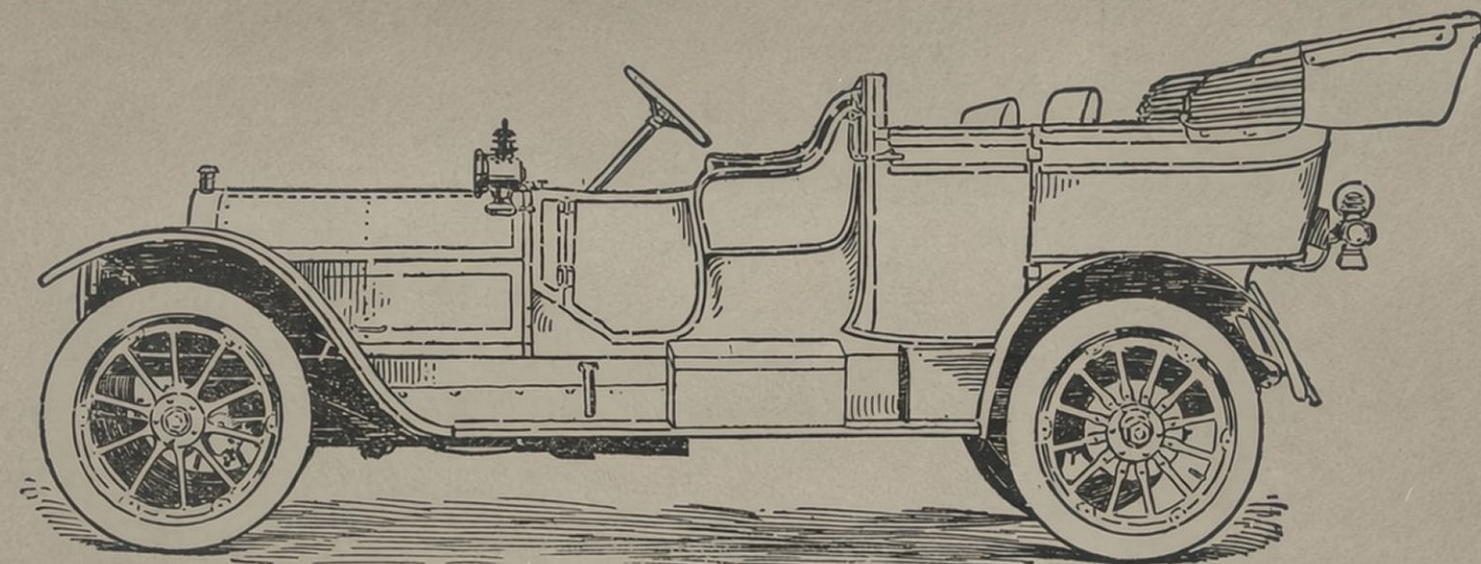
LANDAULET, SEATS SIX
\$4,700



SERIES "B"
TOWN CAR
SEATS SIX
\$4,700

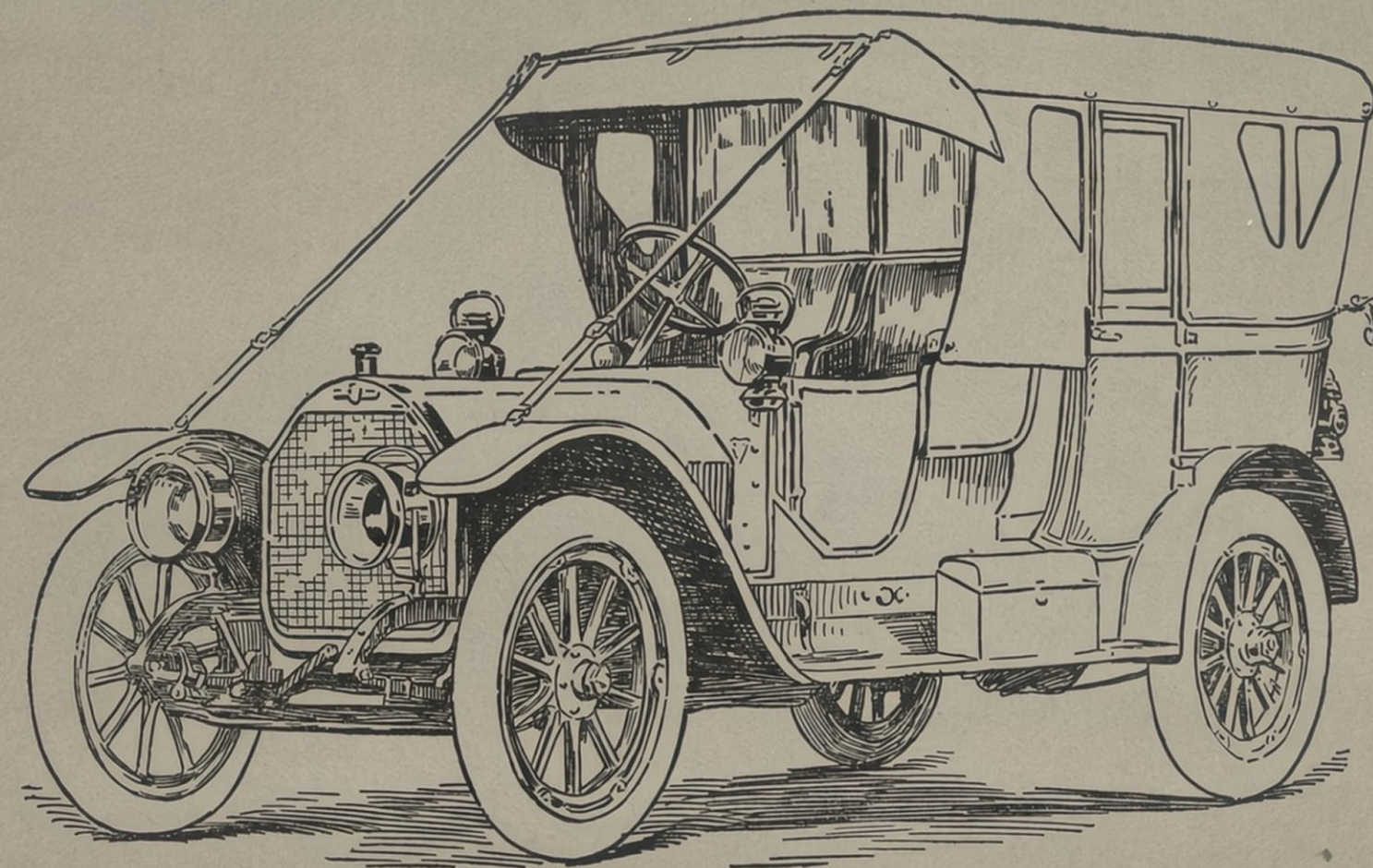
LIMOUSINE
SEATS SEVEN
\$4,700

Wheel base, $125\frac{1}{2}$ inch.
Gear ratio, $3\frac{1}{4}$ to 1.
Tires, 36 x 4 front ; 37 x 5 rear.
Rims, Marsh quick detachable.



SERIES "B" (Special)
EXTENSION TOP LANDAULET (open)
(Equipped with Brewster Body)
SEATS SEVEN
\$6,500

Wheel base, 135 inch.
Gear ratio, $3\frac{1}{4}$ to 1.
Tires, 37 x 5 front and rear.
Rims, quick detachable demountable.



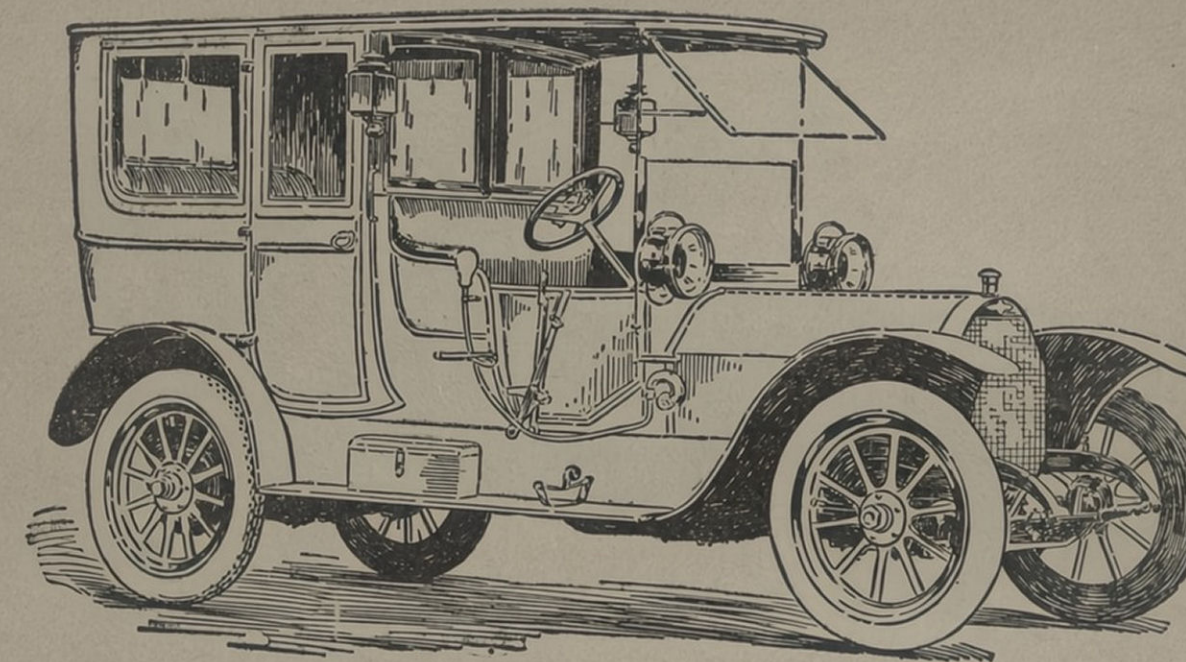
SERIES "B" (Special)
EXTENSION TOP LANDAULET (closed)
(Equipped with Brewster Body)
SEATS SEVEN
\$6,500

Wheel base, 135 inch.
Gear ratio, $3\frac{1}{4}$ to 1.
Tires, 37 x 5 front and rear.
Rims, quick detachable demountable.



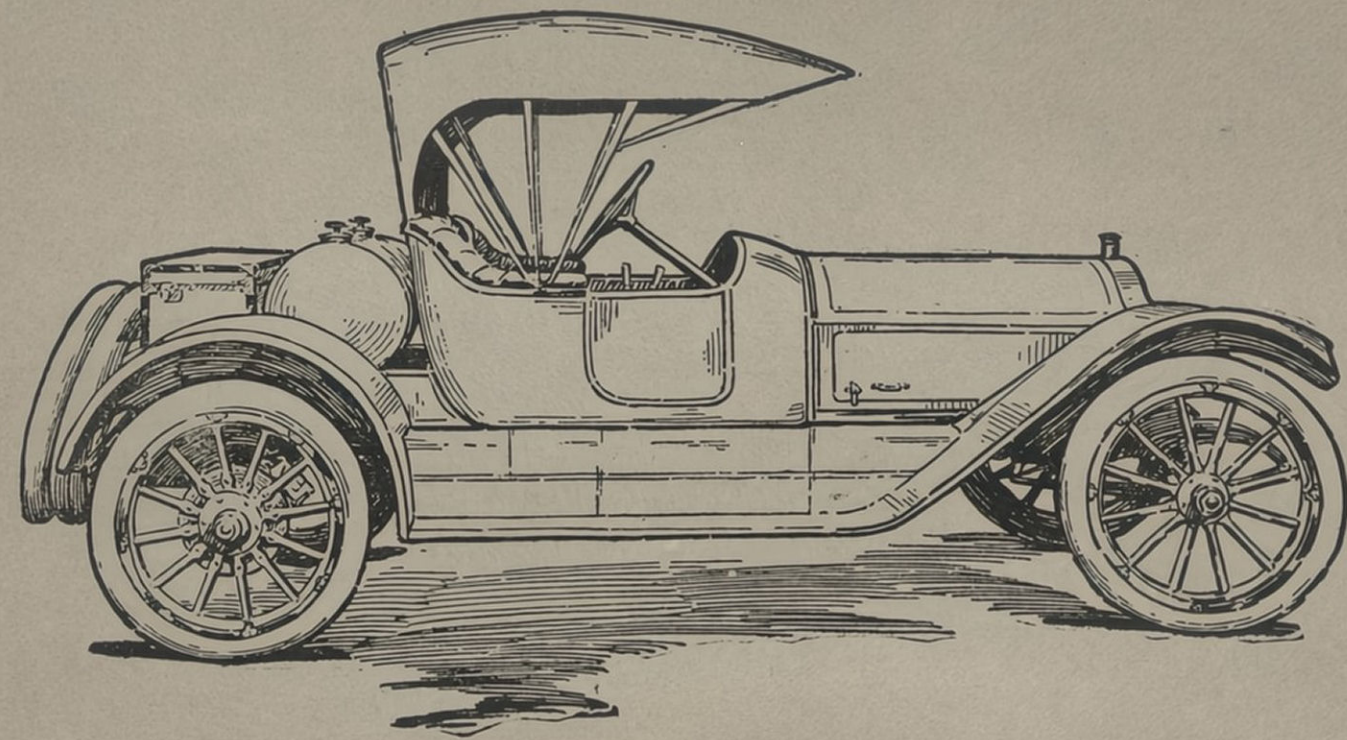
Wheel base, 135 inch.
Gear ratio, $3\frac{1}{4}$ to 1.
Tires, 37 x 5 front and rear.
Rims, quick detachable demountable.

SERIES "B" (Special)
BERLINE-LIMOUSINE
(Equipped with Quinby Body)
SEATS SEVEN
\$6,500



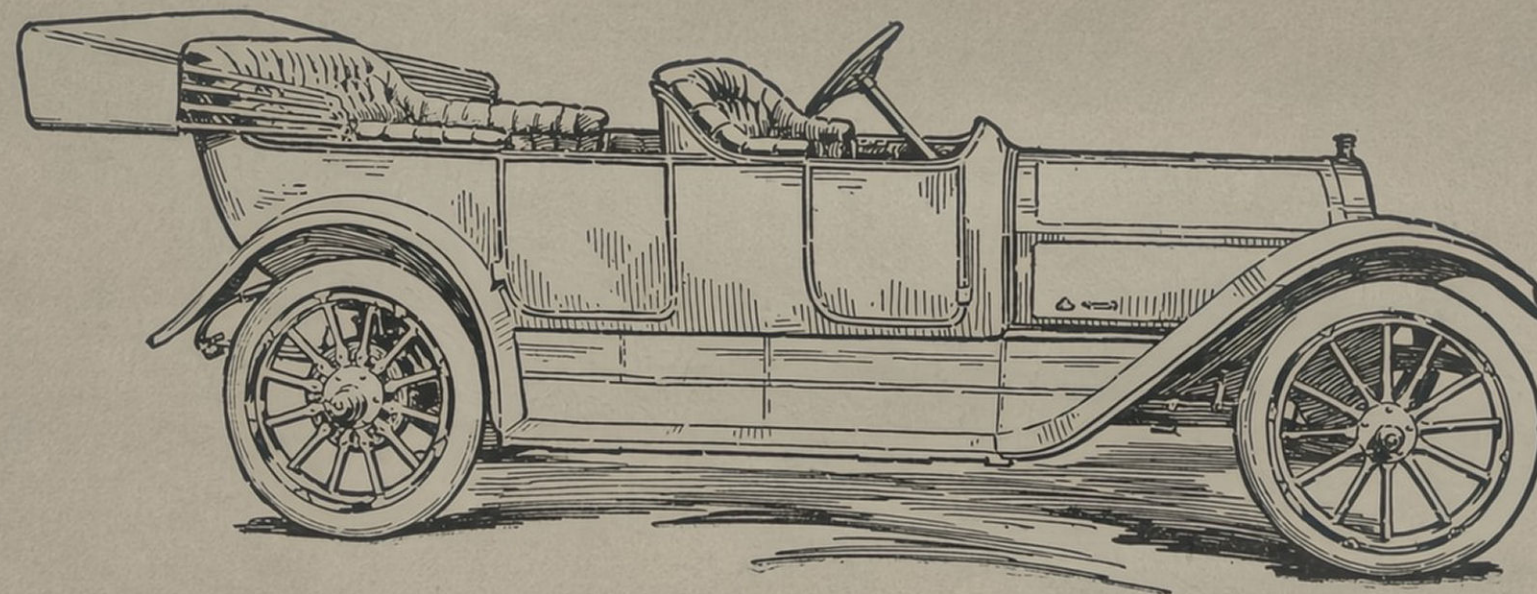
Wheel base, 135 inch.
Gear ratio, $3\frac{1}{4}$ to 1.
Tires, 37 x 5 front and rear.
Rims, quick detachable demountable.

SERIES "B" (Special)
LIMOUSINE
(Equipped with Brewster body)
SEATS SEVEN
\$6,700



Wheel base, 125½ inch.
Gear ratio, 2½ to 1.
Tires, 36 x 4½ front and rear.
Rims, quick detachable demountable.

SERIES "C"
ROADSTER
(Equipped with Quinby body)
SEATS TWO
\$4,500



Wheel base, 135 inch.
Gear ratio, 3¼ to 1.
Tires, 37 x 5 front and rear.
Rims, quick detachable demountable.

SERIES "C"
TOURING
SEATS SEVEN
\$4,800

SERIES "C"

Series "C" models differ from Series "B" mainly in body types and equipment and in some further chassis refinements as detailed below:

- (1) **BODY**—New design with flush side convex panels; upholstering deep and soft, in best hand-buffed leather; rear seats lowered and tilted; ventilators in floor; compartment for suit cases in tonneau under front seat; width of doors, 20-inch front, 23-inch rear, with concealed hinges; interior sumptuous and commodious.
- (2) **HOOD**—Made of sheet aluminum, panelled top and sides, fitted with $\frac{5}{8}$ -inch hinge; edges of hood reinforced, strengthened and padded to prevent rattling and wear.
- (3) **HOOD LEDGE**—Cast aluminum $1\frac{3}{16}$ -inch wide, and padded to prevent rattle of hood.
- (4) **FENDERS**—Of sheet aluminum, 13 inches in width; front fenders fitted with cowl, rear fenders drooped in the rear and 6 inches longer.
- (5) **RUNNING BOARDS**—1 inch wider and $1\frac{1}{2}$ inch lower, edged with aluminum, blind fastened and clear of all boxes and accessories.
- (6) **TOOL BOXES**—Made of metal, attached to chassis and running board, replacing former dust shield and furnishing receptacles for battery, tool kit, side curtains, pump, jack, tire repair kit, tire chains, etc.
- (7) **TIRE IRONS**—Combination tire irons and gas tank support of special design, carrying two tires on demountable rims, holding tires in vertical position and by the demountable rim itself; therefore preventing chafing and rubbing on the tire itself, as is the case with most tire irons.
- (8) **SPRINGS**—Rear, $\frac{3}{4}$ elliptic, 55 inches long, $2\frac{1}{2}$ inches wide, oval top finish; made of electro silico manganese steel and held in position by clips $\frac{5}{8}$ inch in diameter. In Touring car only.
- (9) **IGNITION SYSTEM**—Bosch "Two Independent" system of ignition, which permits ignition on one set of plugs by the magneto and on the second set of plugs by the battery, or on both sets of plugs operating in synchronism. This system makes it possible to furnish a practically clear dash.
- (10) **WHEELS**—Twelve spoke, front and rear equipped with Q. D. demountable rims; roadster, 36 x $4\frac{1}{2}$ -inch tires all around; 7-passenger Touring and Closed cars, 37 x 5-inch tires all around. Rims will also take any make of quick detachable tire.
- (11) **STEERING COLUMN**— $1\frac{7}{8}$ -inch diameter. Wheel rim completely encased in mahogany and fitted with finger grips.
- (12) **CONTROL**—Change-speed and emergency brake levers and lever gate enclosed in aluminum housing located in the centre of the driver's well.
- (13) **DASH**—All equipment removed from dash except switch, gas pressure gauge, oil gauge and compression release lever.
- (14) **MUFFLER CUT-OUT**—Position has been changed to the upper toe board and fitted with latch to hold valve open when desired.
- (15) **REAR AXLE AND TRANSMISSION HOUSING**—Increased in size and reinforced, bearing sizes increased and the transmission separated from differential gears by a dividing wall, allowing use of different lubrication in each section; also affording greater accessibility.
- (16) **FOOT PAD**—Outline has been changed from rectangular to oval, and its contour has been changed from flat to concave to fit foot.
- (17) **GASOLINE TANK**—Made of heavy copper, tinned inside and reinforced underside; has centre filler cap, and is fitted with "Hans" gasoline gauge.
- (18) **TIRE PUMP**—Single cylinder air-cooled, gas engine construction. Constant pressure maintained when in use by means of an accumulator, which prevents sticking of the valves and also prevents oil from being forced into the tire.
- (19) **EQUIPMENT**—The equipment of all Series "C" touring cars is unusually complete. See page 3.

