

HOLDEN KINGSWOOD

Australia's Most Popular Car.



All illustrations and specifications contained in this catalogue are based on the latest product information available at time of publication approval. The right is reserved to make changes at any time, without notice, in prices, colours, materials, equipment, specifications and models and to discontinue models. Some of the equipment shown or described throughout this catalogue is available at extra cost. Check with your Holden Dealer for complete information.



Number One. In a country that doesn't settle for second.

The Holden Kingswood is built tough for Australia. But it's also built roomy and comfortable for Australians.

Room for six adult-sized adults. And room for all their luggage. Luggage that safely stays in its place behind a solid steel cargo barrier.

Long-distance comfort that rides on full-coil suspension. Suspension that soaks up bumps and jolts individually. So you get a smoother, more comfortable ride.

Meanwhile, Holden's isolated chassis design cushions out noise and vibration, adds to your peace and quiet. More peace of mind, too. Because it's also designed to be progressively collapsible in the event of a severe impact.

Under the bonnet, you've got a great blend of power, durability and economy going for you. Kingswood's tough '3300' six gives you the kind of strength and pull you need, even for towing heavy loads.

And Kingswood's fade-resistant power-assisted front disc brakes let you stop as confidently as you go.

Holden Kingswood. Built to take it. Built to last. And built for Australia.

OPTIONS

No doubt about it. Today's Holden Kingswood has a lot going for it. But you can also personalize it with a wide range of value-packed options like these:

The GMH, Tri-matic automatic transmission. Four-speed manual transmission. Limited slip differential. Full air conditioning. 4.2 litre V8. 5.0 litre V8. Reclining front bucket seats (plus seat separator or console).

Push-button radio. Electrically heated rear window. Radial tyres. Heavy duty equipment. Tinted laminated windshield. Vinyl roof.

ACCESSORIES

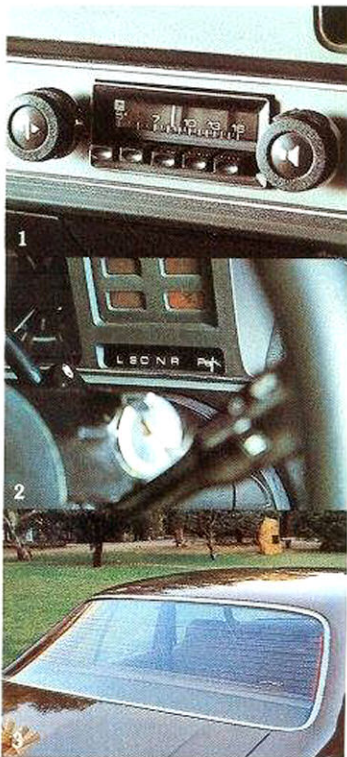
Your Holden Dealer also has a wide range of accessories that include:

Radio/stereo tape player. Tow bar. Trailer wiring harness. Weathershield. Sunshade. Mud deflectors. For complete and detailed information, check your Holden Dealer.

1. Optional push-button radio.
For music, sports, weather and news on the move.

2. Optional Tri-matic transmission.
Takes the legwork out of shifting.

3. Optional electrically heated rear window.
Demists, defogs at the flick of a switch.



Kingswood's steering is forward mounted.

So you get better handling, more accurate steering control. The steering ratio's been increased, too. So you get lighter, more precise control in parking, in traffic and on the open road.



Kingswood's power-assisted flow-through ventilation has been designed for Australian conditions. You get directional fresh air flow when and where you want it. It keeps the air moving, even when you're stationary.

Information at a glance. Kingswood's handsome instrument panel features easier-to-read international symbols. Plus the soft-grip steering wheel.



Fingertip control. At your right hand, you've a convenient control stalk that operates your two-speed wipers, washers, turn-signal blinkers, low/high headlight beams and headlight flashing.



Kingswood's full foam front seat gives gently to your contours and puts real comfort and support in your driving. Good looking, tough wearing deep loop carpeting adds still more practical luxury.

SPECIFICATIONS

The heart of Holden Kingswood is the cleanest running engine Holden's ever built. It's now equipped with a pre-heat system. So the engine starts running cleaner sooner. Faster warm-ups also mean less engine wear. We're so confident in it, that routine service intervals have been extended to every 10,000 kms or six months.

Specs. of standard model

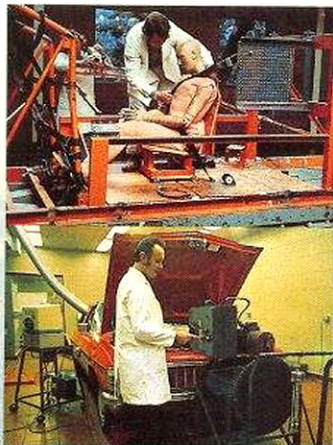
Engine: '3300' 6-cylinder.
Bore: 3.625" (92.0mm)
Stroke: 3.250" (82.5mm).
Cubic Capacity: 201.25 cu. ins. (3298cm³).
Compression Ratio: 9.4:1.
Transmission: 3-speed manual, all synchromesh. Column mounted.
Ratios: 1st 3.07:1, 2nd 1.68:1, 3rd 1.00:1, Rev. 3.59:1.
Rear Axle: Type — Banjo housing with live axles.
Suspension: Front — Independent with coil springs.
Rear — 4-link design with axle mounted coil springs.
Brakes: Front — power-assisted discs.
Rear — duo servo drums.
Standard Tyres: C78L14.
Fuel Tank Capacity: 16.5 gals. (75.0 litres).
Wheelbase: 111.0" (2819mm) Track: Front 59.5" (1511mm) Rear 60.2" (1529mm).
Overall Length: 190.3" (4834mm).
Overall Width: 74.3" (1887mm).
Overall Height: 54.1" (1374mm).
Turning Circle: Kerb to Kerb — 39.7' (12.1m).
Ground Clearance: 5.6" (142mm).
Estimated Kerb Weight: 2960 lbs (1343 kgs).

PEOPLE
TRUST HOLDEN

Holden Safety Features

Safety features include:
Energy-absorbing steering column.
Tandem brake master cylinder-split hydraulic circuits. Energy-absorbing sun visors. Electric windshield washers with 2-speed wipers. Wrap-around turn signal/back-up lamps. 2-speed heater/demister. Brake system failure warning light. Parking brake warning light. Front seat head restraints. Seat belts for six occupants, including retractable dual sensitive belts for outboard front seat positions. Flow-through ventilation — by 'ram' and fan-boosted air. Underslung isolated fuel tank and external fuel lines. Cargo guard — luggage compartment barrier. Power assisted front disc brakes.

Safety first. The GMH Safety Design Test Centre is the largest, most comprehensive, most advanced proving ground complex in Australia.



Power Train Chart

Engine	Standard Transmission	Optional Transmission
Standard '3300' Six-cyl.	3-speed manual	4-speed manual 4-speed wide ratio manual Tri-matic automatic
Optional 4.2 litre V8	3-speed manual	4-speed manual High-performance 4-speed manual Tri-matic automatic
Optional 5.0 litre V8	—	High-performance 4-speed manual Turbo-Hydramatic automatic

Australia's most popular car also has Australia's biggest Dealer and service network. There are more than 500 Holden Dealers across the continent and their staff are trained to give you the best possible attention.



GMH