

PICKUPS



1977 GMC



Series 3500 Sierra Grande Four-Wheel-Drive Wideside Pickup

GMC Pickups keep on adding to the number of satisfied owners who use them for personal transportation and then take off for campsites, job sites and cross-country just to see the sights. That's because GMC Pickups do more than a good job.

Inside each cab you can find interiors and available trim the envy of most any car. They're comfortable and meant to be for hours behind an available tilt steering wheel. This year GMC has added more people-pleasing features that include an available intermittent operation windshield wiper system, power door locks and windows, an inside hood latch and redesigned door trim panels with integral armrests to an already impressive list of standard and optional features. Add to this a newly-styled, corrosion-resistant grille with soft Gray headlight bezels and a selection of 15 solid colors, 41

available two-tone combinations, 41 available special two-tone combinations and 41 available deluxe two-tone combinations in two-door models.

They've gone and written finish to the idea that a pickup is just a truck. Stan-



Power door lock and window controls

ard independent front suspension and leaf rear springs give sturdy hauling ability.

All models feature a standard High Energy Ignition system that delivers a hot spark for quick starts. Service intervals between tune-ups and plug life were extended. GMC offers a stan-

dard In-Line six in its pickups. V8's are available along with a wide range of drivelines and ratios for your way of getting where you're going. New four-wheel-drive models are available too, so many in fact that they're covered in a separate catalogue that your dealer can supply. GMC Pickups have got the brawn and the beauty. Find out why you're more than likely going to be another proud GMC owner. GMC's do a lot, look good doing it!

New exterior decor package

For '77 GMC introduces the new available ZY5 Exterior Decor Package that lets you order your Wideside Pickup from the factory in new two-tone exterior paint schemes with color-coordinated hood stripes and a bright stand-up hood emblem. Your dealer can furnish you with all the information about the available ZY5 decor package.

And there is more you

can add to please yourself in a Wideside or Fenderside Pickup. Available newly-styled full wheel covers in black on bright stainless-steel give a spoked wheel appearance. New P16 spoke-type white painted wheels are also available for C-1500 and K-1500 Series models. Bright chromed bumpers and deluxe chromed bumpers are available. as



Pickup with ZY5 Package well as rear step type bumper with provision for a trailer hitch. Your GMC dealer will be pleased to give you all the details on the full line of GMC Pickups. There's one available that can be equipped the way you want it. Ask him!



Series 2500 Sierra Grande Wideside Pickup



Series 1500 Sierra Grande Fenderside Pickup

GMC Pickups — doing more than a good job!

GMC Wideside Models

GMC offers a selection of two-door and four-door body styles including our most popular model, the Wideside. Handsome Wideside models feature tough, double-walled construction of cargo box sidewalls, tailgate, cab roof and cab upper back panels. Standard insulation is placed between the two steel roof panels during cab construction. Cargo boxes are available in 6½- and 8-foot lengths with standard ribbed steel floor for easy slide-on loading. A wood floor is also available for the 8-foot box. A quick-release feature of the removable tailgate accommodates long loads and facilitates easy camper body installation. Rear duals are available on 3500 Series models to haul those bigger loads. Wideside models are available in half, three-quarter and one-ton models. 250 CID and 292 CID In-Line sixes are standard. Three-speed manual transmissions are standard on half- and three-quarter-ton models. A four-speed manual is stan-

dard on one-ton models. A broad selection of available engines and driveline combinations helps tailor a GMC to your particular requirement.

Wideside models are available in four trim levels: Sierra (Standard), Sierra Grande, High Sierra and Sierra Classic.

Fenderside Models

GMC Fenderside models with durable, double-wall cab construction feature side steps located between the rear fender and cab back to permit easy side loading and cargo handling for both work or recreation. Available 6½- and 8-foot cargo boxes are equipped with standard wood floors that provide good footing for livestock and permit nail-downs to help prevent cargo shifting. Smooth interior walls are ideal for many applications. 50" x 98" box easily accommodates a 4' x 8' sheet of plywood with the tailgate closed. Seven flush steel skid strips hold the wood floor in place yet allow for expansion with changes

in temperature and humidity. A tight-fitting tailgate helps reduce loss of bulk loads. Reinforced stake pockets, for the addition of stake racks, are standard.

Four-Wheel-Drive

GMC offers greater versatility than before with new four-wheel-drive models including one-ton Wideside

power brakes, four-speed manual transmissions and other heavy-duty components. Four-wheel-drive is also available on half- and three-quarter-ton Wideside and Fenderside models. Full-Time four-wheel-drive, standard on models with available automatic transmission, delivers constant, balanced driving power to all four



Series 1500 Sierra Classic Fenderside Pickup

Pickups with off-road capability and up to 10,000 lbs. GVW rating with available dual rear wheels. K3500 one-ton models are equipped with standard power steering, heavy-duty

wheels. Models with manual transmissions have conventional four-wheel-drive with standard front locking hubs. See the GMC Four-Wheel-Drive Brochure for full details.



K3500 Four-Wheel-Drive Crew Cab model.

More GMC value and brawn

Bonus/Crew Cabs

With Bonus Cab and Crew Cab Pickups you can carry people, haul cargo, tow a trailer or do all three. Choose between roomy, in-cab seating for six with Crew Cabs or front seating for three and big, 55.8-cubic-foot, lockable interior cargo space offered by Bonus Cabs. Both models offer the convenience of four doors with roll-down glass. A standard 8-foot Wideside cargo box provides 743 cubic feet of load space.

Available three-quarter and one-ton models offer a broad range of available driveline combinations. New one-ton model with conventional or Full-Time four-wheel-drive offers you on/off road capability and with available dual rear wheels provides for GVWR up to 10,000 lbs.

The 292 CID In-Line six is standard power. A 350V8,

4-bbl. is available for all models. The 400 CID V8 is available on four-wheel-drive models and an available 454 CID V8, 4-bbl. in conventional two-wheel-drive models.

Standard transmission is either a three-speed or four-speed manual depending on model. Automatic transmissions are available in 2500 and 3500 Series Bonus and Crew Cab Pickups and feature a tough 7500-lb. capacity rear axle. Bonus and Crew Cab models provide luxurious interior

comfort and convenience in addition to their big cargo and payload capacity.

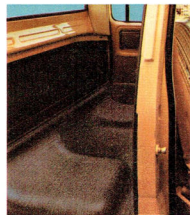
Crew and Bonus Cab interiors are available in standard Sierra or available Sierra Grande and Sierra Classic trims. Sierra Grande interiors are available in custom all-vinyl bench seat trim or ribbed pattern custom velour cloth and vinyl as shown below. Available equipment includes color-keyed rubber floor mats front and rear except Bonus Cab rear mats, full-length door sill scuff plates,

molded plastic door trim panels and insulated headliner. Sierra Classic interiors offer the same equipment plus wood-grain inserts and vinyl storage pockets on front door trim panels, full front and rear cut-pile carpeting (except Bonus Cab rear compartment), full gauges and extensive sound suppression materials.

Crew Cab models feature two full-width, foam-padded bench seats for six-passenger seating comfort and complete cab interior trim. Available forward



Crew Cab interior with seating for six.



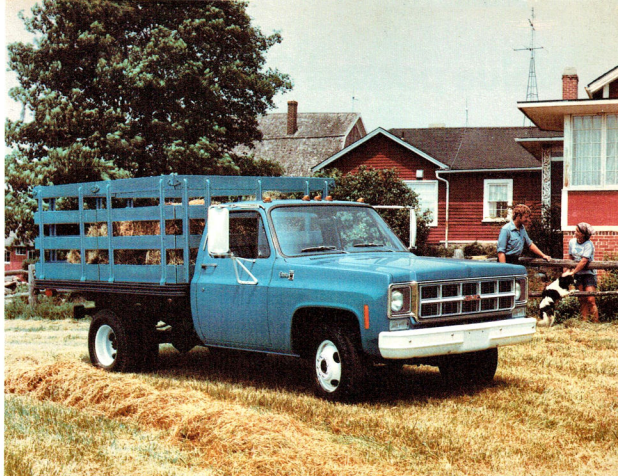
Bonus Cab storage space.



K3500 Four-Wheel-Drive Series with utility body.



3500 Sierra with special body.



Series 3500 Cab & Chassis model with stake body.

folding rear seat back provides access to out-of-sight storage space behind the rear seat.

Bonus Cabs offer the same level of interior luxury as Crew Cabs and front seating for three. The rear compartment provides you with a lockable interior cargo capacity of nearly 56 cubic feet. Four-door convenience provides easy loading and unloading with access from both sides.

Bonus and Crew Cabs also offer available comfort and convenience equipment including air conditioning, power steering, AM and AM/FM radios, Comfortilt steering wheel and more. Steer out the value of Bonus Cab and Crew Cab Pickups...they're at your GMC dealer.

Some of the equipment shown or mentioned is optional at extra cost.

Cab & Chassis Models

GMC offers a wide selection of two-door and four-door Cab & Chassis models that readily adapt to light construction and other special bodies for delivery, construction and general utility applications. Factory-installed stake and platform bodies are available in eight- and nine-foot lengths. Platforms are constructed of kiln-dried, sealed floor boards held in place by flush steel skid strips that hold boards securely in place, yet permit expansion. A round-cornered steel body rubrail offers protection in close loading situations.

One-half three-quarter and one-ton models are featured with a choice of two- or four-wheel-drive. Four-wheel-drive K3500 models with available automatic transmission features

Full-Time four-wheel-drive that lets you enjoy positive traction and balanced drive power at all times. For full details and four-wheel-drive model availability, including the new K3500 models, see the Four-Wheel-Drive Brochure.

Cab & Chassis models are available in Bonus and Crew Cab bodies for extra passenger carrying capability and big in-cab cargo safe space. Available dual rear wheels, 7500-lb. capacity rear axle and selected heavy-duty components offer a GVW rating of 10,000 lbs. Cab & Chassis models come with standard 250 CID or 292 CID In-Line six cylinder engines; depending on model. Bonus Cabs and Crew Cabs offer a standard 292 CID In-Line six, 350 CID V8, 400 CID V8 and 454 CID V8 engines are available on most models. See your dealer for details.

Half- and three-quarter-ton models have a standard three-speed, column-mounted manual transmission. A four-speed, floor-mounted manual is standard on one-ton models. Available interior trim levels offer color-keyed carpeting, ribbed pattern velour cloth and vinyl seat trim, molded plastic headliner with insulated backing and vinyl storage pockets on door trim panels. Available power assist and comfort and convenience equipment includes: full instruments; power steering and Comfortilt steering wheel; AM and AM/FM radios; automatic transmission, speed and cruise control and air conditioning with in-dash directional vents.

A GMC Cab & Chassis model fitted to serve your requirements can help you solve many transportation problems.

Value packed GMC chassis...

Cabs are double-walled in critical areas for durability to help control noise and temperature. Outside cab back panel and inner back panel are welded together. Cab sheet metal is made of large generous panels to help reduce the number of rust-attracting seams. Doors are constructed with inner and outer steel panels welded together in a one-piece perimeter section for a durable structure. Solid door frame stampings become an integral part of the cab structure to help provide good fit, alignment and sealing. Front door outer panels of pre-coated steel. Standard Wideside cargo box features a ribbed steel floor for slide loading. Fenderside cargo box features a standard wood floor with steel slide strips. Hardwood floor also available in 8-foot Wideside body. Total glass area of two-door models including side and rear

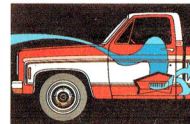
charged primer for thorough coverage and good paint adhesion. Extra capacity, auxiliary fuel tank is also available. Standard Wideside cargo box sidewalls are double-walled. Front stake pockets plus center pockets on 8-foot boxes have convenient holes for cargo tie down. Steering column mounted ignition switch with separate key is standard on all light-duty conventional models and incorporates a steering column and transmission interlock on models with available automatic transmission. Salisbury-type rear axles are standard. Design advantages include use of a large ring gear, roller bearings and a wide range of available ratios. Limited slip differentials are also available. Standard double-walled front fender construction adds rigidity on front-

engine compartment from road splash and flying rocks. Double-walled hood construction is strong and permits a wide-open engine compartment for access to important service points. Staggered rear shock absorbers help to reduce braking hop and power thrusts. Heavy-duty rear shock absorbers are available on half- and three-quarter-ton models; standard on one-ton models. Rear brake drums are finned for heat dissipation. Standard is a two-stage multi-leaf spring rear suspension. Heavy-duty suspensions are available on

most models. Standard independent front suspension on two-wheel-drive models features rubber bushings for inner pivots of the control arms on half-ton models to help soak up road shock; threaded steel bushings are standard on three-quarter-ton and one-ton models. Three-speed, fully-synchronized manual transmissions with column-mounted controls are standard on all 2-wheel-drive 1500 and 2500 Series models. A four-speed manual transmission with floor-

a good return on your investment.

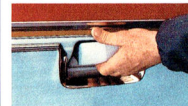
mounted control is standard on all 3500 Series models. Turbo Hydramatic transmissions are available on all light-duty models. Front disc and rear drum brakes are standard. Front disc brake lining wear sensors give an audible warning when brakes need replacing. Rear drum brakes are air-finned cast iron for heat dissipation and cooling.



FullTime power ventilation is standard. Outside air is routed through the cab for driver and passenger comfort exiting through door-mounted valves that also provide pressure relief when doors are closed with windows up. Standard on all models.

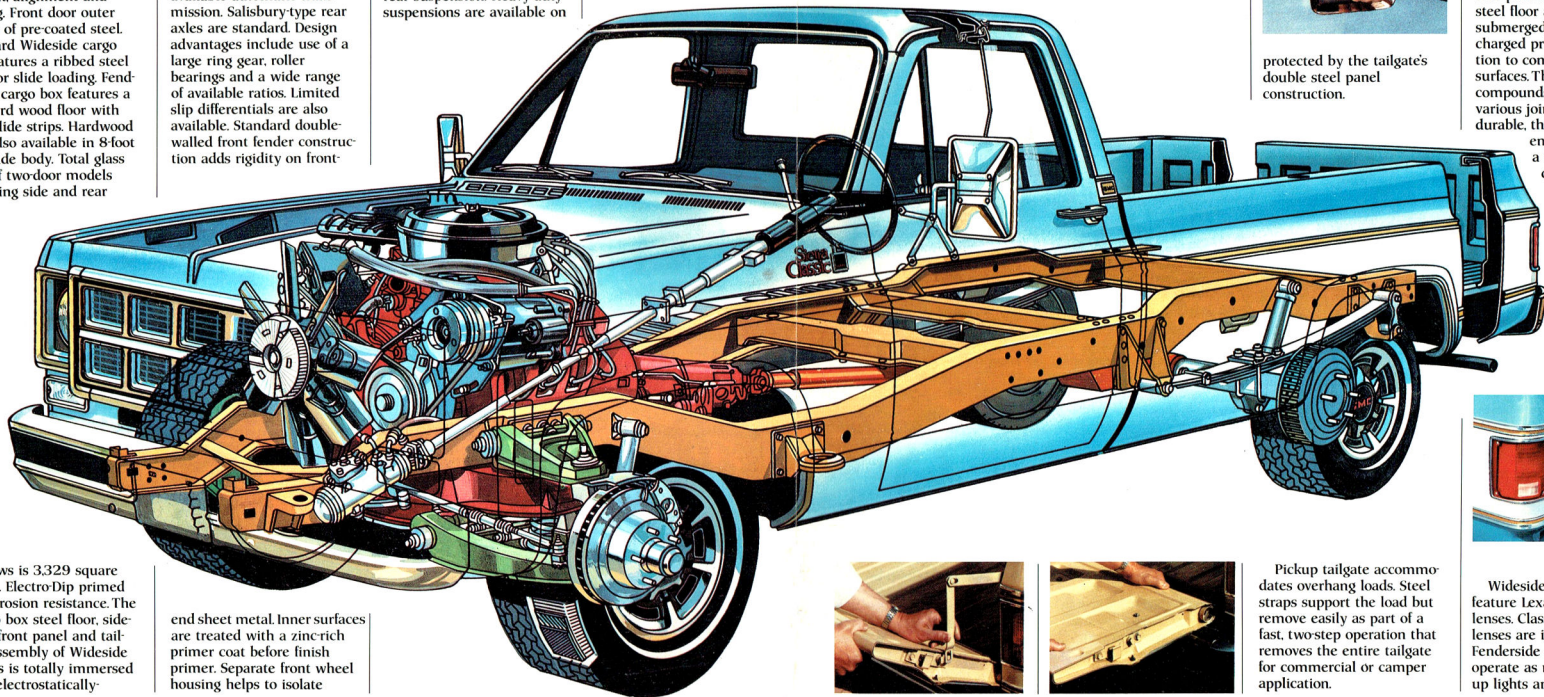


Standard hydraulic brakes with dual master cylinder are self-adjusting and load-matched to GVWR rating. One-hand center latch tailgate operation is



protected by the tailgate's double steel panel construction.

GMC Pickups protect your truck investment dollar. Here's how: Corrosion-resistant, pre-coated steel is used for side door outer panels, rear rocker panels of four-door models and the windshield frame and plenum protective assembly. Then protective coatings are used for certain body areas, inner surfaces of front fender panels and outer front surface of the radiator support. Before priming, all parts are thoroughly cleaned and dried. All parts are primed and the pickup box side panels, front panels, steel floor and tailgate are submerged in an electro-charged primer paint solution to completely coat all surfaces. Then sealing compounds are applied to various joints. After a durable, thick coat of acrylic enamel is applied as a finish coat. And in certain areas an aluminum wax preservative is applied for added protection, on the inner panels.



windows is 3.329 square inches. ElectroDip primed for corrosion resistance. The pickup box steel floor, side walls, front panel and tailgate assembly of Wideside models is totally immersed in an electrostatically-

end sheet metal. Inner surfaces are treated with a zinc-rich primer coat before finish primer. Separate front wheel housing helps to isolate



Pickup tailgate accommodates overhang loads. Steel straps support the load but remove easily as part of a fast, two-step operation that removes the entire tailgate for commercial or camper application.



Wideside Pickup models feature Lexan taillight lenses. Class "A" type taillight lenses are included with Fenderside models. Both operate as rear lights, backup lights and reflectors.

GMC Pickup comfort control center.



Available Sierra Classic Trim, YE9



Available High Sierra Trim, Z84

Hours behind the wheel on the way to any destination should be comfortable. GMC builds its cabs with that in mind. A standard insulation pad is sandwiched between two layers of steel in the roof to control climatic extremes. For convenience there's a new selection of available equipment, plus new colors, fabrics, decors crafted to luxury standards. The opulence is so unexpected, you'll wonder how they found their way into a down-to-earth truck. Review the choices available before you make your selection. You'll be happy about the time spent deciding on the trim that suits your needs, suits your style in a GMC Pickup.

Tilting seat backs

Tilting seat backs are available in conventional and Bonus Cab models for private storage between the seat and cab back panel. An

easy-to-operate latch folds the seat forward for quick access to the items you want out of sight. Ideal for the clutter in a cab on long trips. For neatniks anytime.



Sierra Classic equipment (YE9) two-door Cabs and Pickups

The Sierra Classic interior/exterior includes all of the items offered in the High Sierra interior described at the right plus the following additions or substitutions: full door trim panels with simulated chestnut appearance wood-

grained applique, carpet trim, storage pockets and door closing assist straps; simulated chestnut appearance wood-grained vinyl trim on instrument cluster; full instrumentation including voltmeter, oil pressure and coolant temperature; bright lower body side moldings, bright wheel opening moldings and bright brush-finished tailgate applique for Wideside models. Special cowl side panels are provided as well as a Sierra Classic nameplate on the instrument panel.

Sierra Classic interiors are available in either custom cloth and vinyl or custom vinyl-trimmed, deep-foamed bench seat in Blue, Green, Buckskin, Red or new Mandarin Orange with folding backrest for access to storage area, three front seat belts with integral shoulder belts for driver and RH passenger.

High Sierra equipment (Z84) two-door Cabs and Pickups

High Sierra interiors are available trimmed in either custom cloth and vinyl or custom vinyl in a choice of Blue, Green, Buckskin, Red or new Mandarin Orange and with a folding backrest. Additional interior equipment includes: three seat belts with integral shoulder belts for driver and right-hand passenger, color-keyed carpeting and molded door trim panels with simulated chestnut appearance wood-grained appliques and storage pockets. Also included is a color-keyed molded headliner with insulator. Exterior equipment includes bright front bumper, bright lamp trim (except tail/back-up lamp on Fenderside models). High Sierra emblems on front

The luxury of a GMC Pickup



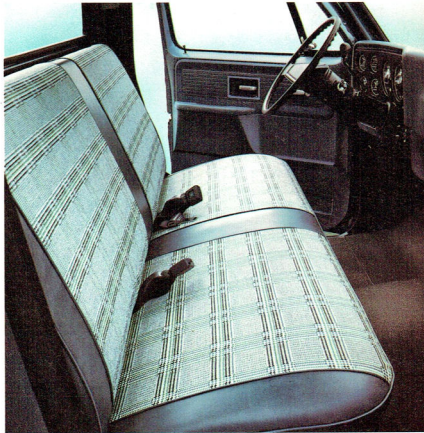
Available Sierra Grande Trim, Z62

fenders and bright windshield and rear window moldings. Also included is a custom steering wheel for two-wheel-drive models, bright cab back panel applique and bright metal hubcaps plus bright upper and lower body side moldings and tailgate applique for Wideside models.

Sierra Grande equipment (Z62) two-door Cabs and Pickups

Sierra Grande seats are available trimmed in either custom cloth and vinyl or custom vinyl in Blue, Green, Buckskin, Mandarin Orange or Red. Knit vinyl seat trim is also available, as well as custom vinyl-trimmed bucket seats with console and color-keyed carpeting. Interior equipment includes bright trim on upper door panels, padded armrests,

three seat belts with integral shoulder belts for driver and right-hand passenger, cigar lighter, dome lamp, full-depth foam front seat cushion and sound damping insulation under cowl and on cab back panel. Additional equipment includes dual horns; bright hubcaps; chrome front bumper, bright front and rear window moldings; body side upper molding with bright trim (Wideside only); bright exterior lamp trim (except tail/back-up lamps on Fenderside) plus Sierra Grande emblems on instrument panel and front fenders. Floor mats are color-keyed and a folding backrest is included for access to storage area behind seat.



Standard Sierra Trim

Sierra Interior (Standard) two-door Cabs and Pickups

Standard bench seats are upholstered in all-vinyl trim which is available in a choice of Blue, Green, Red or Buckskin. Interior equipment includes embossed black rubber floor mat, bright trim rings around instrument cluster openings, color-keyed instrument panel pad with Sierra emblem and simulated vinyl wood-grained trim, color-keyed door trim panels with padded armrests, courtesy lamp, map compartment with door and three seat belts with integral shoulder belts for driver and right-hand passenger. Exterior equipment includes bright grille frame, Sierra nameplates on front fenders and chromed RH and LH mirrors. Custom vinyl-trimmed bucket seats with console and color-keyed carpeting are available.



Bucket seats (A51)

Bucket seats with center console are available in all trim levels in two-door conventional cab models. Center console provides a handy storage place for maps and personal items. Equipment, colors and trim create a personal, functional and comfortable vehicle interior that makes you feel at home. Bucket seat option includes color-keyed, cut-pile carpeting on cab floor and lower cab back panel and full floor insulation. Full-length bright doorsill scuff plates are included when used with Sierra model.

GMC available factory and dealer installed

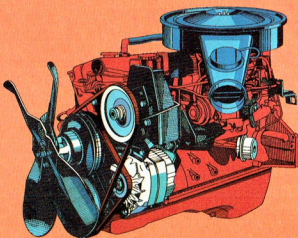
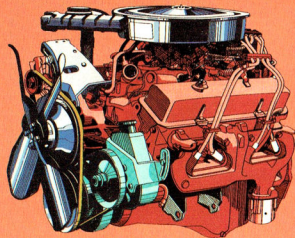
Pickup power range is broad in available engine models, horsepowers and drivelines to accommodate a wide variety of applications. To make your life easier we have many items that contribute to your motoring pleasure and peace of mind.

Inside hood latch

Inside hood release latch is available and new for 1977. It helps protect your engine compartment when all doors are locked.

Servicing is easy

Service is easy with wide-opening, alligator-type hood. Helps make routine service



work easy. Checking of oil, coolant, windshield washer fluid, master brake cylinder and transmission fluid level of available automatic transmission is easy.



Freedom battery

Maintenance-free Delco Freedom battery is available for 77. Never needs water. Side-connecting terminals help reduce corrosion.



Front servicing access

Instrument cluster faceplate removes quickly for normal maintenance.

Power V8 or In-Line Six

Standard engine for half-ton Pickup models is the 250 CID In-Line six with tough, precision-cast cylinder block, water-cooled valve guides, hydraulic valve lifters and precision-ground crankshaft. Three-quarter- and one-ton models have the more powerful 292 CID In-Line six with 1-bbl. carburetor. Standard driveline includes a three-speed manual transmission with 11" clutch for In-Line six models, except 3500 Series which receive a four-speed manual transmission. Available V8 engines for 2-wheel-drive Pickup models include the 305 CID, 2-bbl., 350 CID, 4-bbl. and the 454 CID, 4-bbl.

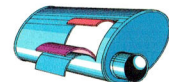
V8 engines feature precision heavy-duty cast block, independently-mounted valve rocker design which allows direct oil feed, water-cooled exhaust valves, cast aluminum alloy pistons and precision-ground crankshaft.

High Energy Ignition

Electronic High Energy Ignition systems eliminate the breaker points and ignition condenser of conventional ignition systems. HEI delivers up to 35,000 volts to each plug to help ignite marginal fuel/air mixtures (with use of unleaded fuel). Intervals between tune-ups are extended and plug life increased. Help permit faster starts. Standard on all two-door and four-door models.

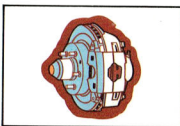
Delcotron generator

Standard on Pickup models, Delcotron generator features built-in transistorized voltage regulator for reliability. Available heavy-duty, 61-amp generator included with available air conditioning.



Long-life muffler

Durable long-life muffler is standard on Pickup models and features double-wrap outer shell and interior baffles constructed of heavy-gauge, fully-aluminized metal.

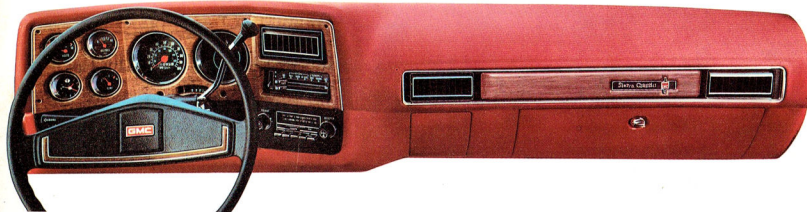


Power brakes

May be ordered on any half-ton model (standard on all others including four-wheel-drive models). Gives you the added security of power front disc brakes and power fitted drum rear brakes with less pedal effort, quicker brake reaction.



accessories



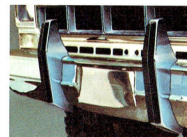
Add the equipment you want from the line of GMC dealer-installed or factory-installed accessories for most general purpose or recreational needs. GMC's standard one-piece integral cockpit-type instrument panel features easy-to-read instruments (speedometer calibrated in MPH and Kph) and controls within easy reach. (1) Available gauge package includes voltmeter, oil pressure and temperature. May be equipped with either clock or tachometer. (2) Available dash-mounted equipment includes integral heating/air conditioning equipment and accessory CB radio packages. (3) A selection of AM, AM/FM radios, many with 8-track stereo provision, are internally mounted.

Wheel trim covers

Available for 15, 16 and 16.5

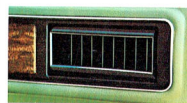


inch wheel diameters. Also, available Rally wheels and wheel trim rings make for a styled-wheel look. Full wheel-trim covers for one-ton dual rear wheel models may be ordered.



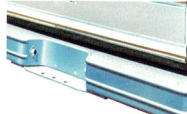
Front bumper guards

With rubber impact strips add a styled look to your Pickup's front end.



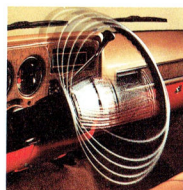
Air conditioning system

Combines cooling, heating and defrosting for year 'round driving comfort with the added convenience of an economy setting. Order air conditioning and enjoy a more dust-free, pollen-free environment with the windows closed for quiet.



Rear step bumpers

Diamond tread steel plate top add extra rear end protection; extra utility with built-in trailer hitch provision.



Tilt Steering Wheel

Adjusts through six positions for added driver comfort. Change position of the wheel during long drives to lessen fatigue. Available on all models with automatic or 4-speed transmission.



Swing-out camper mirrors

In paint or stainless-steel finish for travel with wide body trailers or campers.



Two-section rear cab window

Easy sliding for increased ventilation and cab-to-camper communications.



New styled PA6 wheel

Delivers the popular spoke effect for C-1500 Pickup models. Other types are available. See your GMC dealer.



Dual rear wheels

Available on one-ton models. Reinforced fiber glass wheel well extensions and side and rear clearance lights. Also available on Bonus and Cab & Chassis models.



Swing-out spare tire carrier

Makes short work of minor travel problems. Counter-balanced to operate with one rear wheel deflated.

GMC Technical Information

SERIES	C-1500 (½-ton)		C-1500/F44	C-2500 (¾-ton)	C-3500 (1-ton)
GVW Range, Lbs.	4,900 to 5,600		6,050 to 6,200	6,400 to 8,200	6,600 to 10,000
Front Suspension	Independent Coil Springs				
Cap., Lbs.	Two-Door Cab	3,100	3,400	3,800	3,800
	Crew/Bonus Cab	—	—	3,800	4,000
Springs, Front	Std.	Two-Door Cab	1,475	1,550	1,750
	Std.	Crew/Bonus Cab	—	1,900	2,000
	Avail.	Two-Door Cab	1,500, 1,625	1,625	1,900
	Avail.	Crew/Bonus Cab	—	—	—
Shock Absorbers	Std.	1-1/2 In. Dia.	1-1/2 In. Dia.	1-1/2 In. Dia.	1-1/2 In. Dia.
	Avail.	Heavy-Duty	Heavy-Duty	Heavy-Duty	Heavy-Duty
Stabilizer Bar	Available				
Rear Suspension	Semi-Floating		Semi-Floating	Full-Floating	Full-Floating
Cap., Lbs.	Two-Door Cab	3,750	3,750	5,700	7,500
	Crew/Bonus Cab	—	—	7,500	7,500
Springs, Rear	Std.	Two-Door Cab	1,550	2,000	2,000
	Std.	Crew/Bonus Cab	—	2,600	3,500
	Avail.	Two-Door Cab	2,000	—	2,600, 2,850
	Avail.	Crew/Bonus Cab	—	—	2,850, 3,500, 3,750
Shock Absorbers	Std.	1-1/2 In. Dia.	1-1/2 In. Dia.	1-1/2 In. Dia.	Heavy-Duty
	Avail.	Heavy-Duty	Heavy-Duty	Heavy-Duty	—
Brakes, Service	Manual/Hydraulic		H.D. Vac. Power	Vacuum/Hydraulic/Power	
	Avail.	Vacuum Power	—	Heavy-Duty Vacuum Power	
Clutch, Dia., In.	11		11	11	11
Engine Type	Std.	250 L6	250 L6	292 L6	292 L6
	Avail.	305 V8 (2-bbl.)	—	350 V8 (4-bbl.)	350 V8 (4-bbl.)
	Avail.	350 V8 (4-bbl.)	350 V8 (4-bbl.)	454 V8 (4-bbl.)	454 V8 (4-bbl.)
	Avail.	454 V8 (4-bbl.)	454 V8 (4-bbl.)	—	—
Steering	Std.	Manual	Manual	Manual	Manual
	Avail.	Hydraulic Power	Hydraulic Power	Hydraulic Power	Hydraulic Power
Transmission	Std.	3-Speed	3-Speed	3-Speed	4-Speed
	Avail.	4-Speed	4-Speed	4-Speed	Turbo Hydra-matic
	Avail.	Turbo Hydra-matic	Turbo Hydra-matic	Turbo Hydra-matic	—
Tires	Std.	Two-Door Cab	G78-15B (4 pr.)	L78-15B (4 pr.)	8-75-16C (6 pr.)
	Std.	Crew/Bonus Cab	—	—	8-75-16C (6 pr.)
	Avail.	Two-Door Cab	7.00-15C (6 pr.)	L78-15C (6 pr.)	9.50-16.5D (10 pr.)
	Avail.	Crew/Bonus Cab	—	—	9.50-16.5D (10 pr.)

Exterior finishes



Colors shown are representative only.

Printed reproduction does not permit accurate color fidelity. Actual colors may be seen at your GMC dealer's.

The illustrations or descriptions in this catalogue do not necessarily show standard colors, materials or equipment. General Motors of Canada Limited reserves the right to make changes at any time without notice in prices, colors, materials, equipment, specifications and models and also to discontinue models. This right may be exercised without incurring any responsibility to cars and trucks previously sold.

GENERAL MOTORS OF CANADA LIMITED • OSHAWA, ONTARIO

GMC

The Truck People from General Motors