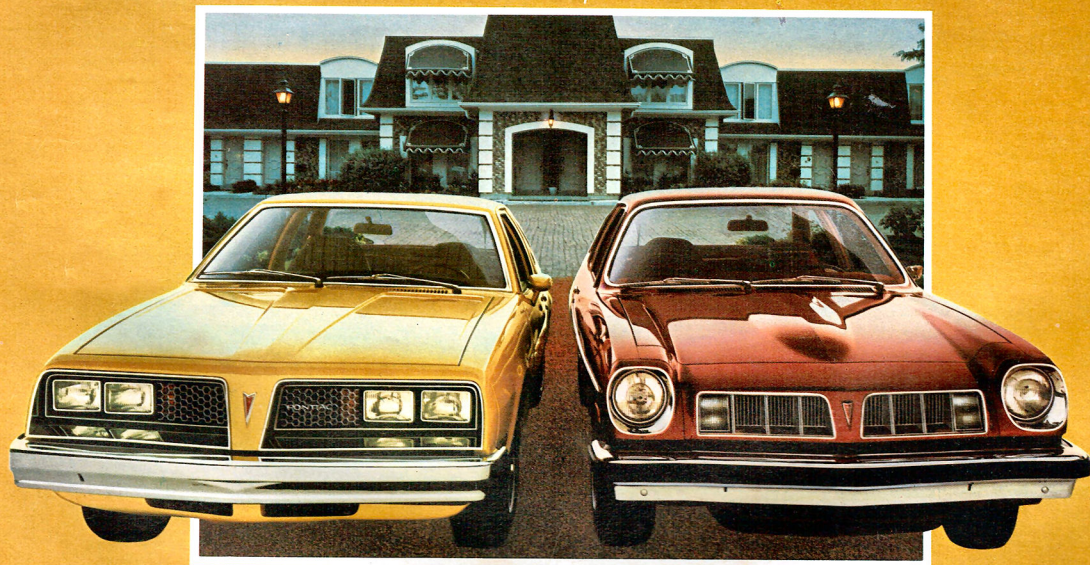


PONTIAC 1977

Sunbird/Astre



1977 SUNBIRD.

It's no coincidence that one of North America's hottest new sport coupes is a Pontiac.

Building exciting sport coupes is a way of life at Pontiac.

In 1963, Grand Prix brought agility to a kind of car where only luxury had reigned.

In 1964, GTO muscled in on the intermediate market. And created a sport coupe legend.

Trans Am first rumbled off the line in 1969. A sport coupe so unique, it still remains unrivaled.

And in 1973 the first Grand Am showed the Europeans what Americans could do with grand touring.

Four of North America's finest sport coupes. From one manufacturer.

That's why people who are really into cars are getting into Pontiac's newest, smallest sport coupe called Sunbird.

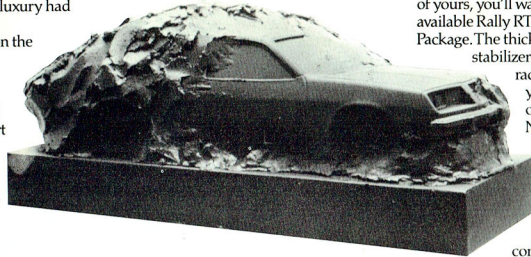
With Sunbird, Pontiac exhibits a real understanding of just how great a small car can be.

Instead of just considering the small car as a way to offer high mileage at a low price, Pontiac designed Sunbird to rival some of Europe's most sophisticated sport coupes. And they did it with typical Pontiac style and dash.

The heart of Sunbird is Pontiac's new cast iron 2.5 litre (151 CID) engine.* It's tough. The block is cast from high-grade alloy iron for the kind of durability you expect of Pontiac.

It's very smooth. At a traffic light, you'll swear there's a six, maybe even a V8 under the hood.

And it's powerful. With 2.5 litre (151 CID) of Pontiac power. So you'll pull



away from that light with authority. Pontiac makes no apologies for the lack of overhead cams or side-draft carbs.

This cast-iron four is a remarkably rugged new engine. And only Pontiac's got it. Bolt on the standard floor-shifted 4-speed,* or the available 5-speed or Turbo Hydra-matic and you've got a power team that's impressive anywhere in the world.

For the driver looking for top performance, Sunbird's optional 3.8 litre (231 CID) V6 powerplant holds the key.

But it takes more than power to be a great sport coupe. So Sunbird's suspension is designed to be smooth. Order up the available steel-belted radials with Radial

Tuned Suspension and it gets even more so. And if winding roads and switchbacks are a favourite pastime of yours, you'll want Sunbird's available Rally RTS Handling Package. The thick front and rear

stabilizer bars and 70 series radial tires will help you take those kind of roads in stride.

No matter where you drive, you're going to be very comfortable in this new Sunbird.

The standard contoured buckets, cut-pile carpet and new deluxe cushioned 3-spoke steering wheel are impressively elegant.

The instrument panel vinyl even has the look of lacquered rosewood.

Go for Sunbird's available luxury interior and you're sitting super pretty.

Maybe you'll want a complete Rally instrumentation package. Or a tinted glass sunroof. Or a fold-down rear seat.

Or new wire wheel covers. Or a set of Pontiac's dazzling new cast aluminum wheels. They're all available.

Sunbird's styling could go down in the books as a perfect example of tasteful restraint.

The clean, uncluttered lines make other

little sport coupes look positively Victorian in their excess. Want to jazz up those lines a bit? There's a new Sunbird Formula you can order this year. (Shown right.)

Outside, you'll get a blacked-out grille. Front air dam. Body-colored sport mirrors. Body-colored Rally wheels. A rear deck spoiler and black rear panel. And a black lower body treatment with "Formula" graphics and some very sporty harmonizing stripes.

Inside, there's full Rally instrumentation. Even a tach.

And underneath it all, there's a Rally RTS suspension.

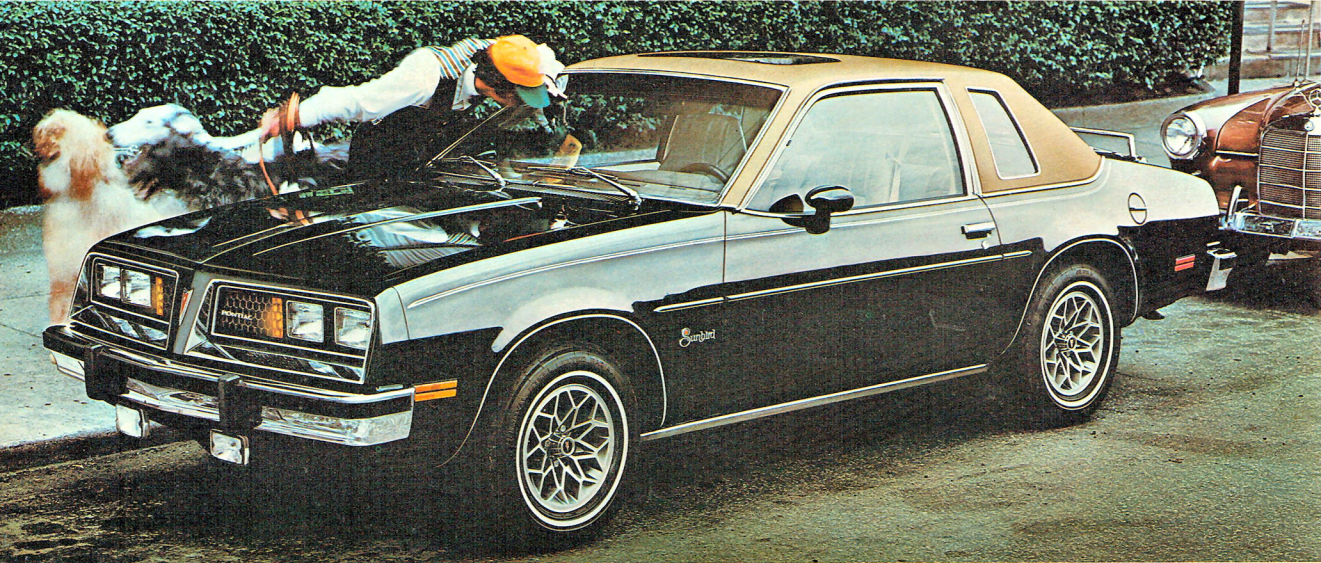
But no matter how you equip your new Sunbird, one drive is all it'll take for you to understand how great a small car can be.

If it's a Sunbird from Pontiac.



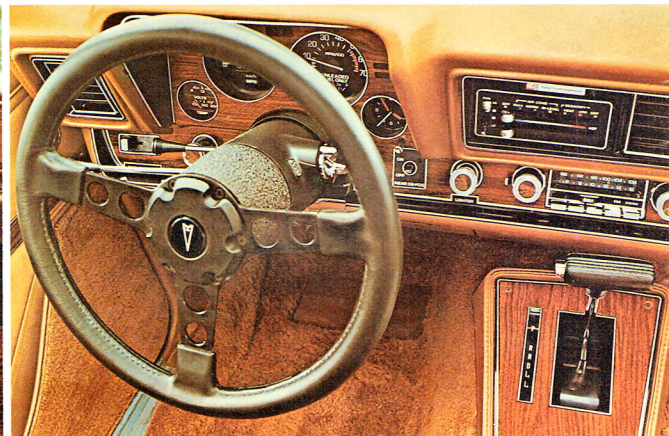
Right: Heads turn when a new Sunbird Formula passes by.





Above: Sunbird captures attention with vinyl top and formal window.

Below: Sunbird's available luxury interior and full Rally instrumentation.



Facts and Figures

Every new Sunbird comes with a new sealed "Freedom" battery that never needs water.

The cast-iron four is standard]. This V-6 is available. Either way, you get a sport coupe with the power of a Pontiac.

A nifty little 4 speed is standard]. A 5 speed or Turbo Hydra-matic with a center console is available.

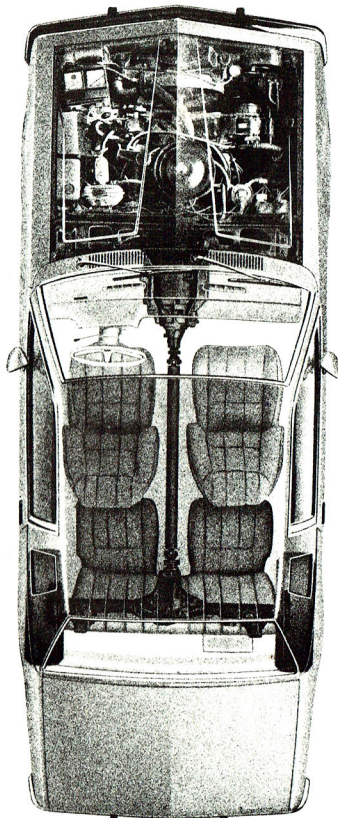
The deluxe cushion 3-spoke wheel is nice. The thickly padded 14" Formula wheel is even better. Order it with a full set of Rally gauges and you've got a dash with a dash.

Order the available fold-down rear seat and turn your Sunbird into a two seater with more load space.

Order Sunbird's Rally RTS suspension, and you'll get thick front and rear stabilizer bars and BR-70-13 steel belted radials.

The electric rear window defroster you can order can clear the rear window in a hurry.

The standard stowaway spare gives you a lot more trunk room.



DIMENSIONS (inches)	Sunbird Coupe	Sunbird Formula Coupe
Overall length	177.8	177.8
Overall width	65.4	65.4
Wheelbase	97.0	97.0
Track, front and rear	55.2/54.1	55.2/54.1
Head room, front/rear	37.5/37.2	37.5/37.2
Leg room, front/rear	42.8/28.2	42.8/28.2
Shoulder room, front/rear	51.7/50.8	51.7/50.8
Hip room, front/rear	48.6/42.0	48.6/42.0

CAPACITIES
Fuel tank - 15.4 gals
Cooling system - 10.7 qts. (2.5 litre) 7.0 qts. (2.3 litre)
Oil, less filter refill - 3.0 qts.

MODELS
Sunbird 2-Door Coupe
Sunbird Formula 2-Door Coupe

POWER TEAMS
Standard engines
2.5 litre (151 CID) 2 bbl. 4 cyl.

Available engines
3.8 litre (231 CID) 2 bbl. V-6

Standard transmission
4-speed manual floor shift

Available Transmissions
5-speed manual floor shift
Turbo Hydra-matic

STANDARD INTERIOR FEATURES
Standard Sunbird Features

New deluxe cushion 3-spoke steering wheel with soft rim and center. Front bucket seats in cloth or Morrokide. Single buckle seat and shoulder belt system. Distinctive door and quarter panel trim. Speedometer graduated in kilometers per hour as well as miles per hour (odometer registers miles). Rosewood applique on instrument panel. Stowaway spare tire. Cut-pile carpeting. Full acoustical insulation.

Special Sunbird Formula Features
Rally gauges and tachometer.

STANDARD EXTERIOR FEATURES
Standard Sunbird Features

Distinctive split grille and front end with dual rectangular headlamps. Custom wheel covers. Distinctive rear end styling with amber directional signal tail lights. Front and rear end energy absorbent bumpers. Large rear quarter windows. Formal quarter window styling available.

Special Sunbird Formula Features

Body colored Rally II wheels, body colored mirrors, blacked out grille. Black lower body treatment with harmonizing stripes. Black rear end panel. Rear deck spoiler and front air dam.

STANDARD CHASSIS FEATURES
Standard Sunbird Features

Front disc brakes with audible wear indicators, rear drum brakes. New sealed "Freedom" battery. High Energy Electronic Ignition. A78-13 bias ply blackwall tires.

Special Sunbird Formula Features

Rally RTS Handling Package including large front stabilizer bar, rear stabilizer bar and BR-70-13 steel belted radial tires.

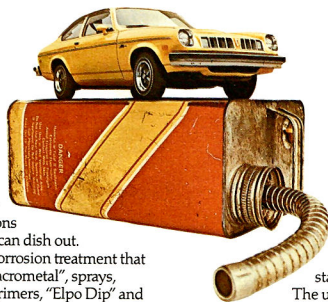
POPULAR EQUIPMENT AVAILABLE

Luxury appointment group including custom seat and shoulder belts, outside sport mirrors with left hand remote control, thick cut-pile carpeting, fully trimmed luggage compartment, vinyl body accent striping, glove compartment lamp, rear end panel molding and spare tire cover. A new lamp group package with right hand doorjamb switch, glove box lamp and luggage compartment lamp. Rally RTS Handling Package with large front stabilizer bar, rear stabilizer bar and BR-70-13 steel belted radial tires. New wide body and hood striping. New 3-spoke luxury cushion or formula steering wheels. Sporty new cast aluminum wheels. Rally wheels with trim rings. New wire wheel covers. Body accent pin stripes available in black, white or gold. Luxury Trim Group includes luxury bucket seats with Doeskin Morrokide or knit cloth trim, luxury door trim with map pocket and carpet, rear seat ash trays, luxury cushion steering wheel, body colored door handle inserts, wheel opening and doorsill moldings. Sporty Sunbird removable glass roof panel Landau top (only on those models with formal windows). Special Sunbird console for floor mounted shifter and hand brake. Custom air conditioning. Radios AM, AM/FM, AM/FM stereo, AM with stereo tape player and AM/FM with stereo tape player. Left hand remote control, right hand fixed sport mirrors. Non glare rearview mirror. Tilt steering wheel. Variable ratio power steering. Power front disc brakes. Rally gauge cluster with tachometer. Safe-T-Track rear axle. Engine block heater for quick cold weather starts. Heavy-duty radiator. Heavy-duty battery. Convenience accessories including soft ray glass on all windows, electric clock and floor mats. Car compass. Trunk luggage rack. Protection accessories include infant baby carrier and child safety seat.

Some of the equipment shown or mentioned is optional at extra cost.

1977 ASTRE.

Pontiac's little star plays the city game to win.



A lot of people think that life in the big city is exciting...and to most it is. But to some people getting in, around and out of the local metropolis is not always fun.

A car's got to last a good long while. Astre's built to do just that. In fact, the engine on a 1977 Astre will still be guaranteed 5 yrs. later assuming it travels about 12,000 miles a year. That sounds like a pretty tough engine and a pretty tough engine

guarantee, doesn't it? Another problem facing the city (and the highway) kind of

driver is corrosion. Well, Astre has some of the most sophisticated anti-corrosion treatment in the car business. So no matter whether your driving is all downtown, on the highway, on country roads or a little of each, your '77 Astre is designed for

the toughest road conditions this country can dish out. Major anti-corrosion treatment that includes "Zincrometal", sprays, "Plastisol", primers, "Elpo Dip" and numerous others are what does the trick.

A great city car should also be able to handle tight situations. Astre's 177 $\frac{1}{2}$ " overall length and 35.8" (curb to curb) turning radius help you find the opening.

With a selection of three available suspension systems to help you step lively. The standard one has full-coil springs that work just fine with the standard bias-belted tires. If you go for the available radial tires, you'll enjoy our famed Radial Tuned Suspension. This system is specifically designed to get the most

out of those radial tires. You'll also get a front stabilizer bar.

The ultimate move on Astre is to our available Rally RTS Handling Package. Now you're cooking not only with radial tires and a front stabilizer bar, but a rear stabilizer and specific Radial Tuned Suspension components too.

Now even if a city car can handle itself well, that doesn't mean very much if it's done in an austere setting. You don't have to worry about Astre. Even the basic interior is far from basic.

With nylon-blend, cut-pile carpeting, simulated rosewood applique on the

instrument panel and a new deluxe cushion 3-spoke steering wheel. All-vinyl black or buckskin seats complete the picture. And a pretty picture it is. They're standard on all Astres.

*See Facts and Figures page for availability.



Right: Astre Hatchback Coupe.



Some of the equipment shown or mentioned is optional at extra cost.



THE ASTRE SAFARIS.

Inside this sporty
little road machine
a station wagon
is lurking.

46.6 cubic feet of station wagon.

That's the kind of space a growing family needs. For playpens. And tricycles. And sleds.

Astre Safari also has the other station wagony things that you expect from any Safari. An easy-to-fold-down rear seat. Carpeting in the cargo hold. And available wood-grain vinyl side-panels.

But Astre Safari's usefulness doesn't intrude upon its sportiness. Here's one small wagon that's always ready to rally.

Our new Formula Astre Safari displays more than a little macho. With body-colored Rally wheels. Rally gauges and tach. Some snazzy sport mirrors. And some equally snazzy body trim.

Even Pontiac's Radial Tuned Suspension is standard on the Formula.

Beneath its rugged good looks, every Astre Safari sports a rugged 2.3 litre (140 CID) 4-cylinder engine.

The interior of these wagons say sportiness, too. With a new deluxe

cushioned steering wheel. Thick cut-pile carpeting. And contoured front buckets - in long lasting Morrokide. All very high toned. (For a closer look at these features, see the Astre section of this catalogue.)

For 1977 the Astre Safaris are two very sporty little road machines. That just happen to be station wagons.

*See Facts and Figures page for availability.



If you opt for an Astre Hatchback or Safari Wagon, you'll have your druthers of two available interiors.

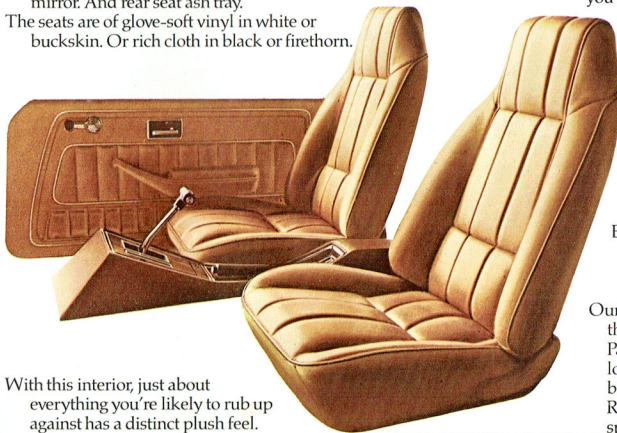
The custom interior trim will give you a choice of white, black, buckskin or firethorn vinyl, or firethorn or black cloth.

You'll also become accustomed to padded door panels and the new deluxe cushion steering wheel. Nice things to get accustomed to.

For posher surroundings, order the luxury interior trim.

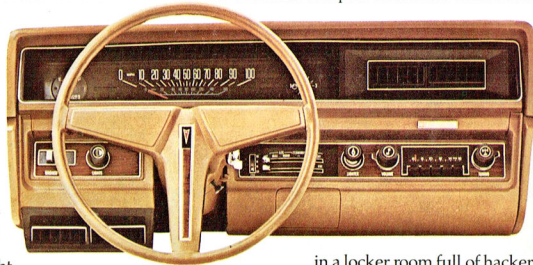
Thicker, cut-pile carpeting. Padded and cloth-covered door trim panels with map pockets. Instrument panel and door pull assist straps. Day/night mirror. And rear seat ash tray.

The seats are of glove-soft vinyl in white or buckskin. Or rich cloth in black or firethorn.



With this interior, just about everything you're likely to rub up against has a distinct plush feel.

If you're beginning to get the idea Astre sticks out from the rest of the subcompact crowd like Gordie Howe



in a locker room full of hackers, you're absolutely right.

And that goes specially for our new sporty city slickers. The new Formula Astre Hatchback and the Formula Wagon. Take the Formula's instrument panel. Your control center features a rally gauge cluster with tachometer and clock—all set off by a smart simulated woodgrain look.

Extra sport can be had by getting a grip on the available Formula steering wheel. It's thick and tough.

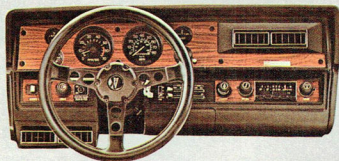
Our Formula Astre also includes the taut Rally RTS Handling Package, body striping, lower body "Formula" graphics, blacked-out grille, body-colored Rally wheels and body-colored sport mirrors.

The 1977 Astre Safaris. There's big league sportiness in these two little wagons.

Zipping into tight parking places is what an Astre 2-Door Hatchback Coupe does very well.



We even spoil you with a standard rear spoiler on the Hatchback. The Wagon gets an air deflector standard.



After all, a Formula should live up to its name.

Like all Astres, four-on-the-floor is standard. For those who want to go the automatic route, Turbo Hydra-matic is available. Or you

can make your console bristle with the available fully-synchronized 5-speed manual transmission†.

All Astres—2-Door Coupe, 2-Door Hatchback Coupe and 2-Door Safari Station Wagon—also feature a new grille that's unmistakably Pontiac. And standards that are great for city or country driving. Front disc brakes, High Energy Electronic Ignition and the new "Freedom" battery that is virtually maintenance free and corrosion resistant.

Astre also fights corrosion with front fenders and rear quarter panels coated with zinc compounds. Other inner body areas are undercoated with a hot aluminized wax spray. Besides building Astres to last, we've also built them to handle hefty loads. A Hatchback gives you 28.6 cubic feet of load space with the rear seat down. With the Wagon, you can take 46.6 cubic feet of what-have-you.

Taking the city in stride is the mark of a great car.

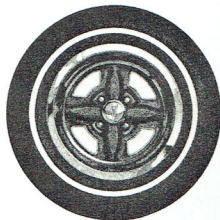


†See Facts and Figures page for availability.



Astre Safari

Astre Coupe



Astre rolls three of them your way. Starting from the top, you can choose from available Rally or new cast-aluminum wheels. Or deluxe wheel covers. All choices are round, firm and fully packed with sport.

Some of the equipment shown or mentioned is optional at extra cost.

Facts and Figures

MODELS

Astre
Astre 2-Door Coupe, Astre 2-Door Hatchback Coupe, Astre 2-Door, 2-Seat Safari Wagon
Astre Formula
Astre Formula
2-Door Hatchback Coupe
Astre Formula
2-Door, 2-Seat Safari Wagon

POWER TEAMS*

Standard engine:
2.3 litre (140 CID) 2-bbl. 4-cyl.

Standard Transmission:

4-Speed manual floor shift

Available Transmissions:

5-Speed manual floor shift
Turbo Hydra-matic

STANDARD INTERIOR FEATURES

Standard Astre Features

New deluxe cushion 3-spoke steering wheel.

Simulated rosewood applique on instrument panel trim plate. Nylon-blend, cut-pile carpeting. Load floor carpeting in Astre Safari. Front bucket seats in vinyl. Speedometer graduated in kilometers per hour as well as miles per hour. Single-buckle seat and shoulder belt system.

Special Astre Formula Features

Rally gauges and tachometer.

STANDARD EXTERIOR FEATURES

Standard Astre Features

New stylish grille and distinctive Pontiac front end. Anodized aluminum front and rear bumpers with energy-absorbing mounting system. Hubcaps with Pontiac emblem. Bright windshield, side window, rear window and roof drip moldings. A78-13 black bias-ply tires.

Special Astre Formula Features

Black lower body with harmonizing stripes. Radial Tuned Suspension with BR70-13 blackwall radial tires. Body-colored Rally wheels and sport mirrors. Blacked-out grille. Rear deck spoiler, blacked-out rear end panel. Formula identification.

STANDARD CHASSIS FEATURES

Standard Astre Features

Front disc brakes with audible wear indicators, rear drum brakes. High Energy Electronic Ignition. Catalytic converter. A78-13 bias-ply tires. Sealed "Freedom" battery.

Special Astre Formula Features

Rally RTS Handling Package including specifically tuned components and front and rear stabilizer bars.

DIMENSIONS (inches)	2-Door Coupe	Hatchback Coupes	Safari Wagons
Overall length	177.6	177.6	177.6
Overall width	65.4	65.4	65.4
Wheelbase	97.0	97.0	97.0
Track, front/rear	55.2/54.1	55.2/54.1	55.2/54.1
Head room, front/rear	38.4/39.4	37.0/37.1	38.5/40.1
Leg room, front/rear	42.8/28.9	42.8/29.7	42.8/30.1
Shoulder room, front/rear	51.3/49.2	51.3/49.2	51.3/49.2
Hip room, front/rear	46.9/42.5	47.2/42.5	46.9/42.5

CAPACITIES

Fuel tank - 13.3 gals.

Cooling system - 7.0 qts. (2.3-litre 4);
10.7 qts. (2.5-litre 4)

Oil, less filter refill - 3.5 qts. (2.3-litre 4);
3.0 qts. (2.5-litre 4)

POPULAR EQUIPMENT AVAILABLE

Custom Trim (not available on 2-door coupe)

includes custom front and rear seats, right door dome lamp switch, day/night rearview mirror and load floor carpeting (Hatchback only).

Custom Exterior including windowsill moldings (only on Hatchback), side window reveal moldings (only on Coupe, std. on others), wheel opening moldings, lower body side moldings and body-colored inserts in door handles. Bumper protective strips. Custom Seat Option (only on Hatchback and Wagon) with custom front and rear seats in cloth or Morrokide. Luxury interior trim package that includes luxury front and rear seats in doeskin, luxury door trim, added acoustical insulation, thick cut-pile carpeting, right-hand door dome light switch, day/night inside rearview mirror, instrument panel assist strap, door pull straps, rear ash tray, custom door trim with map pocket and load floor carpeting (Hatchback only).

Console. Tilt steering wheel. Variable-ratio power steering. Custom air conditioning. Safari woodgrain siding (avail. on Wagon only). Radial tires (BR78-13 black, WSW or WL steel-belted) with Radial Tuned Suspension. Rally RTS Handling Package with BR70-13 radial tires, specifically tuned suspension and front and rear stabilizers. New luxury cushion or Formula steering wheels. New cast-aluminum wheels. New wire wheel covers. Custom wheel covers. Rally wheels with trim rings. Body-colored Rally wheels with trim rings (on Formulas

only). Body accent stripes or wide body stripes. Body side moldings (available only in black). Swing-out rear quarter windows (available only on Coupes and Hatchback). AM radio, AM/FM radio, AM/FM stereo radio or Left-hand remote control, right-hand manually adjustable sport mirrors. Power front disc brakes. Lampgroup including right-hand doorjamb switch, rear compartment courtesy lamp, luggage, lamp and glove compartment lamp. 5-speed manual transmission. Rally gauge cluster with tachometer. Engine block heater. Saf-T-Track rear axle. Heavy-duty radiator. Heavy-duty battery. Convenience accessories such as soft-ray glass for all windows, electric clock, floor mats. Chrome luggage carrier (all except Coupe). Rear window wind deflector (only on Astre Safari). Cargo area carpeting (only on Astre Hatchback).

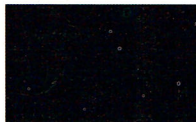
Exterior colors



11. Cameo White



13. Sterling Silver



19. Starlight Black



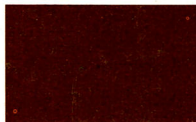
29. Nautilus Blue



36. Firethorn Red



61. Mojave Tan



69. Brentwood Brown



78. Mandarin Orange



38. Aquamarine



51. Goldenrod Yellow



75. Bucaneer Red



21. Lombard Blue

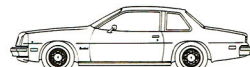


32. Royal Lime

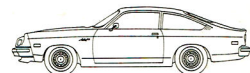


64. Fiesta Orange

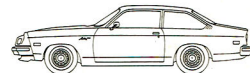
Colors shown are representative only. Printed reproduction does not permit accurate color fidelity. Actual colors may be seen at your Pontiac-Buick dealers.



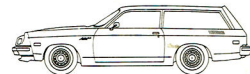
Sunbird 2-Door Coupe



Astre 2-Door Hatchback Coupe



Astre 2-Door Coupe



Astre 2-Door Safari

The illustrations or descriptions in this catalogue do not necessarily show standard colors, materials and equipment. General Motors of Canada Limited reserves the right to make changes at any time without notice, in prices, colors, materials, equipment, specifications and models, and also to discontinue models. This right may be exercised without incurring any responsibility with regard to cars and trucks previously sold.