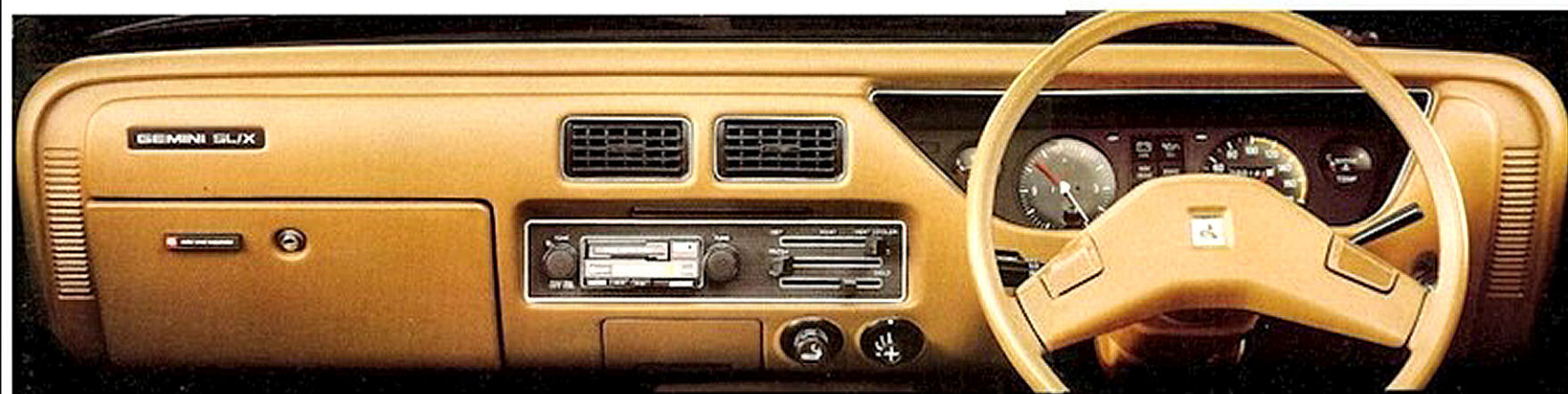




HOLDEN
GEMINI





The SL/X dash: Everything at your fingertips.



Holden Gemini SL/X



Holden Gemini SL/X

Gemini... one of Australia's most highly successful cars. And no wonder! Bold aerodynamic front and rear styling; and under the sleek skin, the latest in sophisticated engineering advances. Gemini - most value in its class - with the style, toughness, reliability and operating economy the eighties demand.

The SL/X uses the same legendary, free-revving and durable 1600 overhead cam four-cylinder engine and four-speed manual shift as the rest of the range, but it has distinctive, exciting features that make it one of the classiest cars in its class. Luxurious, glove-soft cord cloth reclining bucket seats, complete with head restraints, and a unique high-back rear seat make the SL/X an outstandingly-comfortable car.

Tinted band laminated windscreen, heated rear window, AM radio/stereo cassette, styled steel wheels, and wide-section side protection mouldings are all standard equipment.

You can option your SL/X to even further luxury and performance with cast alloy road wheels, five-speed transmission, Trimatic automatic transmission, or air-conditioning.

Like the whole Gemini range, the SL/X sets high standards of interior quietness. Extensive sound-proofing under the floor and behind the dash makes sure of that.

And pre-coated steel is used in the front fenders, bonnet and boot lid, to give further insurance against corrosion.

The SL/X is your special kind of Gemini. It has all the outstanding Gemini qualities of reliability, economy and the famous ride and handling that comes only with Radial Tuned Suspension. And it's a Holden. People trust Holden.



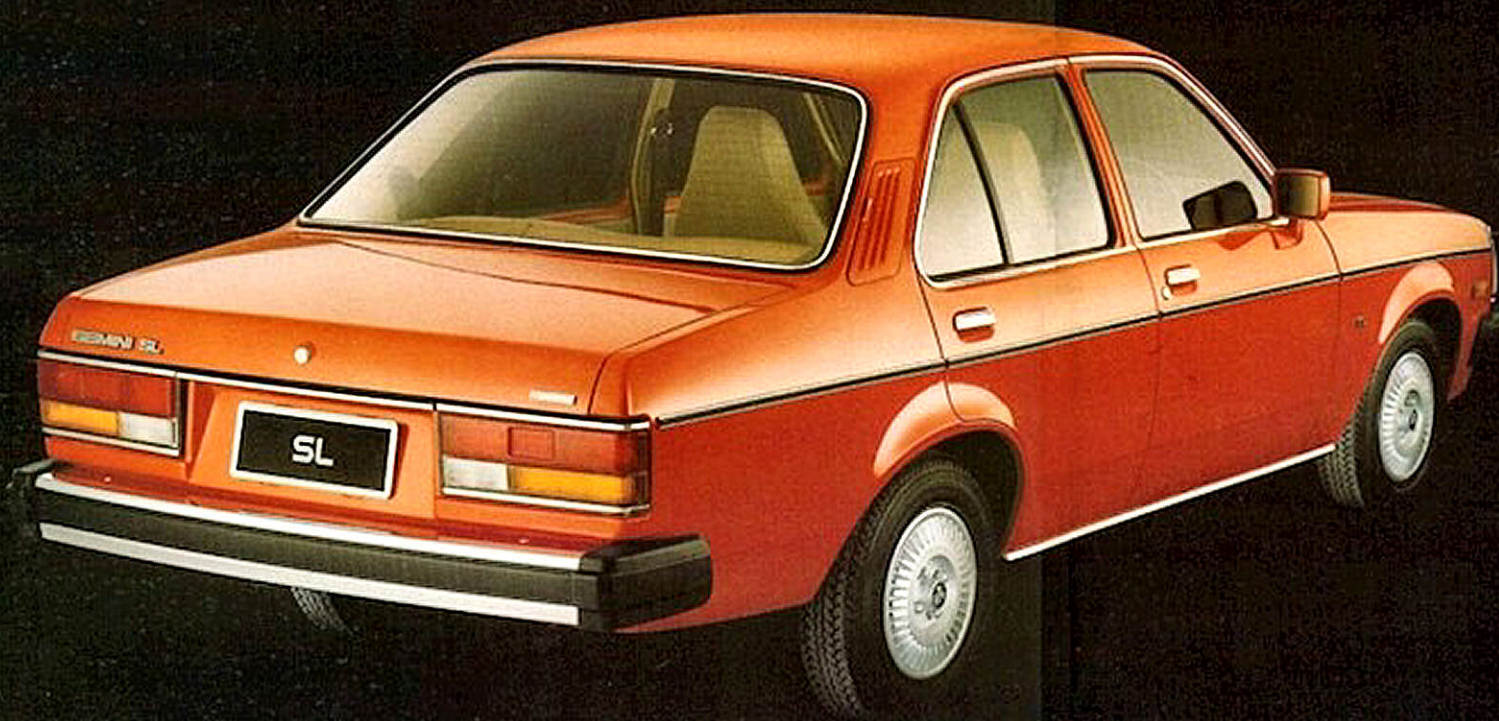
Gemini's big, family-size boot space.



SL interior: Space and comfort.



Gemini Sedan: Value leader.



Holden Gemini SL

Holden Gemini SL

Gemini SL is the Gemini model you see most.

The SL features the same bold, sleek aerodynamic front and rear as the SL/X, with husky protective end caps and bumper inserts and large rear tail lamp clusters for extra safety. The SL's distinctive features include a full length side protection strip and handsome, moulded turbo-fin type full wheel covers.

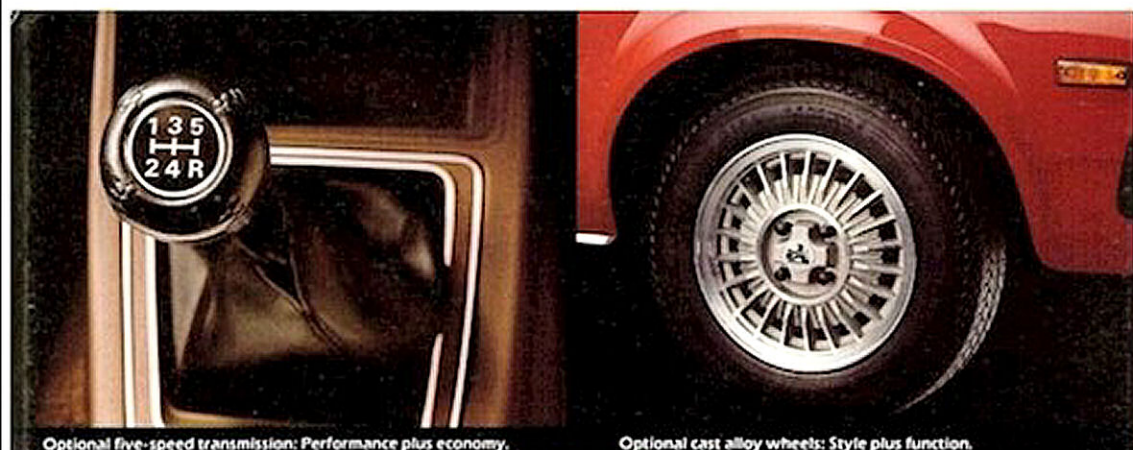
Inside, the SL carries on the Gemini tradition of giving the driver the most head, shoulder and leg room in its class, plus a comprehensive instrument cluster that has all the information and controls you need. The warning lights are handily grouped in a central "computer read-out-styled" cluster, flanked by electric clock and speedometer with both odometer and trip meter.

The SL comes standard with heated rear window, full foam reclining bucket seats, push-button radio, door-to-door loop pile carpets, passenger assist handles, full centre console and many other features.

All Gemini models have these major features as standard:

- Full loop pile carpet
- Trip meter
- Locking petrol cap
- Front and rear armrests
- Lockable glovebox
- Steel radial tyres
- Multi-function steering column control stalks
- Full foam reclining bucket seats
- Three-speed heater/demister
- Damage-resistant bumper end caps

Price leader in the Gemini range is the Holden Gemini sedan, designed to be the value car. It features the same modern-look grille as the SL and SL/X, but with wider, black-painted bars and round headlights.



Optional five-speed transmission: Performance plus economy.

Optional cast alloy wheels: Style plus function.



AM radio/cassette: Standard on SL/X, optional on others.



Gemini SL/X Interior.
Optional 3 speed Trimatic
automatic illustrated.

Holden Gemini Safety

You don't get to be top without offering top value for money – and that's the secret behind the success of Gemini. As well as being a top performer, all three Gemini models have today's essential safety features.

The list starts with seat belts for all passengers – inertia reel in the front – and goes on through the energy-absorbing steering column, dual master cylinder with split hydraulic circuits, knock-out type interior mirror, safety-padded and glare reduced instrument panel, and glare reduced mirrors.

Sun visors are energy-absorbing too, and there are child-proof locks on both rear doors on all models. Electric windscreen washers are matched to matt black wiper blades and arms (for reduced glare). Lighting includes hazard warning flashers and reversing lamps. Flow-through ventilation and fan-assisted heater/demister system give extra safety in cold weather. Anti-burst door locks, a brake failure warning lamp, and front seat head restraints are all part of the Holden Gemini safety story.

Holden Gemini Features

Sparkling acceleration, easy cruising! Gemini's responsive 1600 overhead cam, four cylinder engine delivers all-round scintillating performance ... for city driving, suburban shopping or longer weekend trips. Combined with a fuel economy that stretches every litre. And you have the benefits of Radial Tuned Suspension and steel radials as standard equipment, around which the complete Gemini suspension has been designed, including the front and rear shock absorber and stabiliser bar specifications, offering pin-sharp handling and an exceptional ride.

Holden Gemini Sedan



Holden Gemini Options

Everybody likes to have options available when they're making a new car purchase, because they can use them to tailor their purchase more accurately to their needs or desires. Gemini has been designed to fit to various price ranges, but has options available. You can choose from among these:

□ Fully-integrated air conditioning – built in on the production line – system cools, heats, demists, dehumidifies and removes dust and pollens from the air you breathe inside the car. It's year-round coats-off comfort.

□ Three-speed Trimatic automatic transmission with T-bar. Optional on all three models, this famous Australian-built transmission is first choice for many city drivers because it takes much of the hassle out of stop-start driving, parking and – for that matter – learning to drive in the first place.

□ Five-speed manual transmission. For the driver who's looking for that little extra, the five-speed floor shift is tailor-made. It delivers an extra bonus in the form of improved fuel economy when running in "overdrive" fifth gear.

□ Cast alloy road wheels. Not only a great lift for your car's looks, but also a weight reduction that is a step in the right direction towards improved fuel economy.

□ Remote control driver and passenger exterior mirrors. Once you've used remote mirrors, you wonder how you ever did without them. See your Holden dealer. He has the full details on options and accessories to make your new Gemini even more stylish and efficient.

Equipment

	Gemini Sedan	SL Sedan	SL/X Sedan
Four-cylinder '1600' ohc engine	S	S	S
4-speed manual floor shift	S	S	S
3-speed Trimatic automatic T-bar	O	O	O
5-speed manual floor shift	O	O	O
Cast alloy road wheels	O	O	O
Full wheel covers	N/A	S	N/A
Plastic bumper end caps	S	S	S
Bumper rub strips	N/A	S	S
Side protective moulding	N/A	S	S
Tinted laminated windscreen	O	O	S
Steel radial ply tyres	S	S	S
Pushbutton AM Radio	O	S	N/A
AM radio/stereo cassette	O	O	S
Heated rear window	N/A	S	S
Electric clock	N/A	S	S
Multi-function column stalk	S	S	S
Centre console	N/A	S	S
Cloth cord seats	N/A	N/A	S
Full foam reclining bucket seats	S	S	S
Locking glovebox	S	S	S
Full interior carpeting	S	S	S
Power-boosted flow-through ventilation	S	S	S
Fully-integrated air conditioning	O	O	O
Heavy-duty battery	O	O	O
Passenger assist handles	N/A	S	S

S – Standard, O – Optional, N/A – Not Available

Holden Gemini SL



Holden Gemini SL/X

