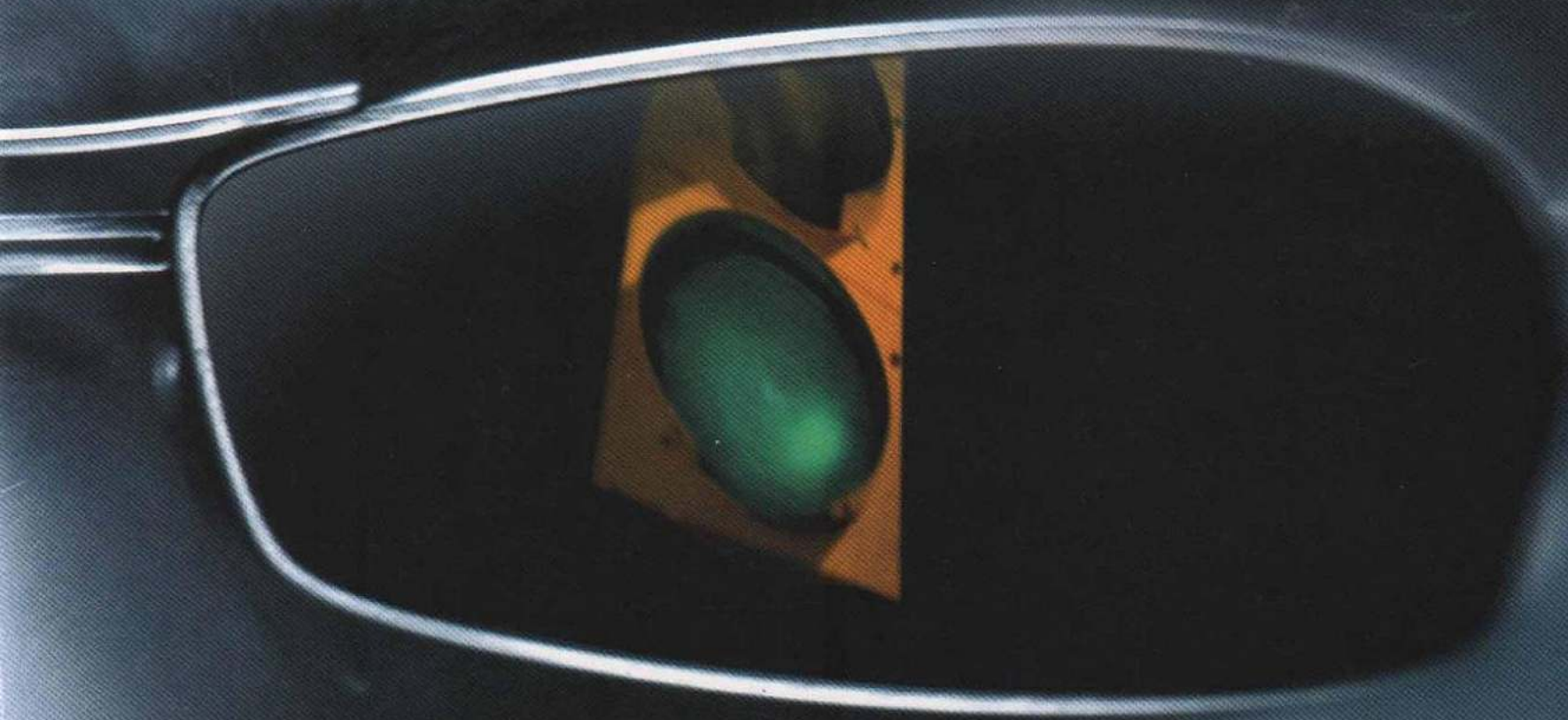


Cadillac 



S E V I L L E  
S L S · S T S



Cadillac introduced the world's first mass-production V8 engine, America's first traction control system, and StabiliTrak, the most advanced integrated stability control system in the world. Now, after 96 years of achievement, the 1998 Seville stands as yet another engineering milestone: our first luxury sedan designed from concept to concrete to be the best of its kind, anywhere in the world. This Seville is a technological tour de force, vault-solid, Northstar-powerful and ergonomically precise. Virtually nothing has been compromised. Except, perhaps, for the esteem of every other performance luxury sedan on the planet.

<i>C o n t e n t s</i>	
EXTERIOR	2-9
PERFORMANCE	10-17
INTERIOR	18-27
TECHNOLOGY	28-35
SAFETY & SECURITY	36-41
FEATURES & OPTIONS	42-43
ACQUISITION OPTIONS	44





STS



“A design that  
has earned the  
right to evolve.”

( DENNIS LITTLE VEHICLE CHIEF DESIGNER )

「これは、進化するデザインです」。

“EIN DESIGN, DAS SICH DAS RECHT ZUR WEITERENTWICKLUNG VERDIEN T HAT.”

One does not radically restyle an automotive paradigm. Respect for its purity demands refinement. Thus, the evolution of Seville advances to its next generation. Lean and subtly muscular, Seville's exterior embodies shapes that are clean and tastefully linear. Its flavor is more worldly in spirit but still evocative of a powerful, agile machine. From its tungsten-halogen headlamps, to its trunk-mounted stop lamp, the new Seville has been rethought, researched and refined. It all underscores the fact that natural selection is an integral part of the theory of evolution.







Seville STS





Seville STS





Seville SLS





“This Seville  
represents a  
quantum leap  
forward in  
vehicle dynamics.”

( FRED WOOD LEAD DEVELOPMENT ENGINEER )

「セビルは、車のダイナミクスに飛躍的な発展を  
もたらしました。」

“DIE FAHRZEUGDYNAMIK DIESES SEVILLE STELLT EINEN QUANTUM-SPRUNG IN DIE ZUKUNFT DAR.”

At sufficient speed, time and space are said to merge. And while Seville has yet to achieve Einsteinian velocity, one could argue that the performance of its Northstar V8 does tend to compress the interval between Points A and B. Whether they're on a map or a clock. This phenomenon is due in great measure to four valves per cylinder, dual overhead cams, sequential port fuel injection and up to 300 horsepower. But "Northstar" is more than a world-renowned engine. It is also a responsive, integrated system. And it goes beyond sheer muscle...

10

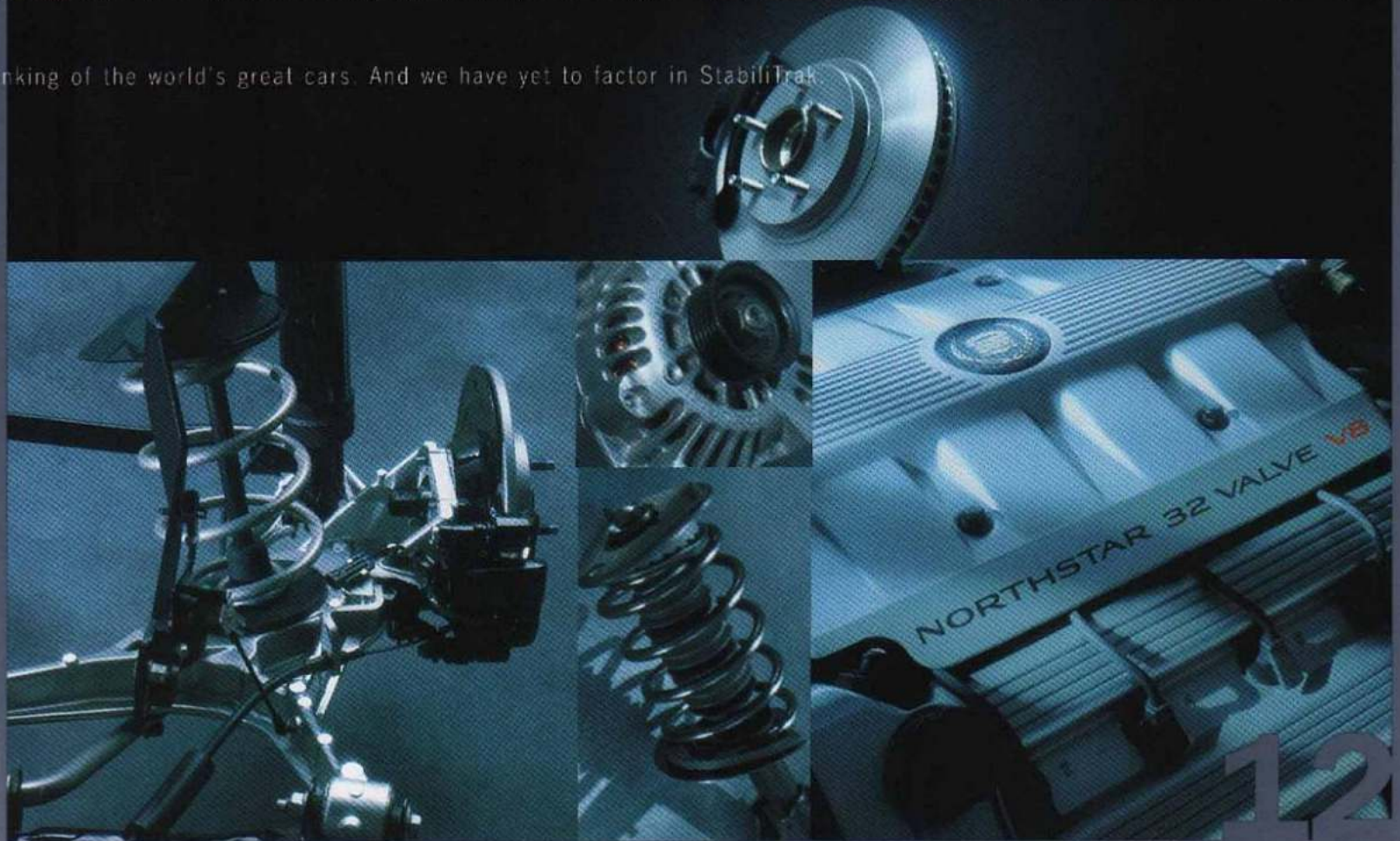






## T h e N o r t h s t a r S y s t e m

Your brain takes 200 milliseconds just to "decide" to move your index finger. The Northstar System's reaction time is significantly faster. For every six milliseconds, the computerized heart of the Northstar System processes millions of data bytes, then deftly coordinates Seville's performance. Toothed sensors at each wheel monitor rotation and help cue the ABS or traction control systems into play at exactly the right moment. To reduce unsprung mass, weight-saving aluminum has been used on the front and rear control arms. The Continuously Variable Road-Sensing Suspension system reads the position of each wheel and instantly adjusts the dampers to the conditions at hand. The result rivals far more complex active suspension systems. The performance of Seville's Northstar V8 is also choreographed by computer. Spark and advance are precisely matched to driving conditions. And as electrical demands rise, Seville's liquid-cooled alternator keeps its composure. It not only runs cool but quietly since it is mounted solidly and directly to the engine block. Such technology is enough to cause the human brain to recalculate its ranking of the world's great cars. And we have yet to factor in StabiliTrak.





The image features a glowing orange brain centered on a blue circuit board. The brain is surrounded by a white circle. Overlaid on the image are several mathematical formulas:  $P_a = P - P_w$  on the left,  $Q = V_{th} \cdot n \cdot n_{vol}$  in the center, and  $v$  on the right. At the bottom right, the letters 't' and 'a' are also visible.
$$P_a = P - P_w$$

$$Q = V_{th} \cdot n \cdot n_{vol}$$

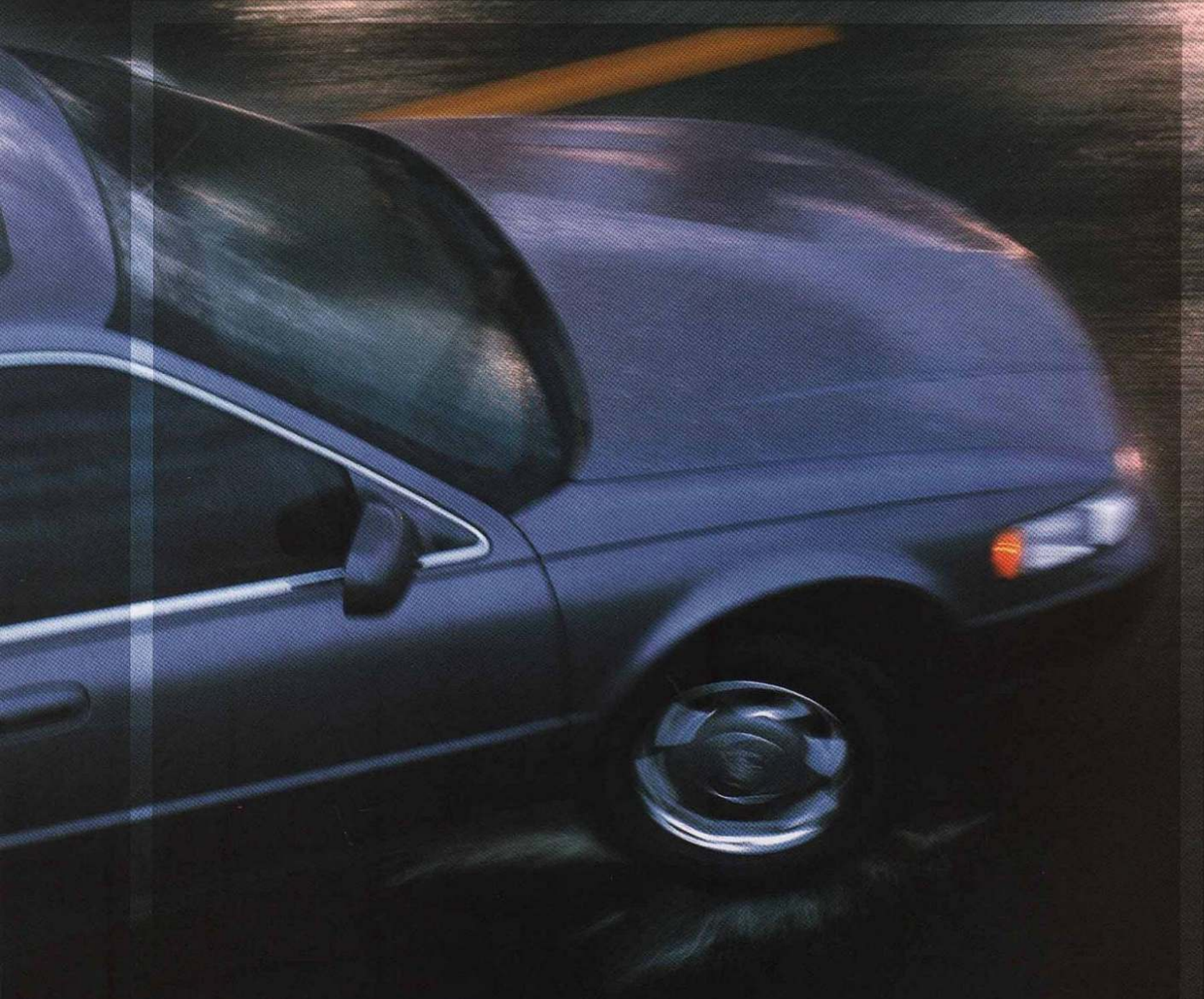
$v$

$t$

$a$



T h e S t a b i l i T r a k S y s t e m



A body in motion tends to remain in motion unless acted upon by an equal and opposite force. In Seville, that force is called StabiliTrak. Its magic is determined by the cornering rate. If stability is in question, one of

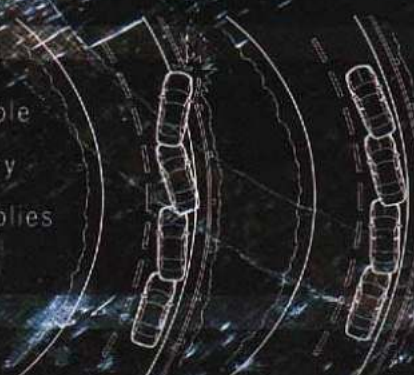


in motion unless acted upon by an equal and opposite force. In Seville, that force is achieved by computer orchestration of sensor data. One sensor measures yaw, another A third sensor telegraphs steering wheel position. It's all calculated by the computer, and the front brakes is lightly applied. This helps keep Seville on track and under your control.



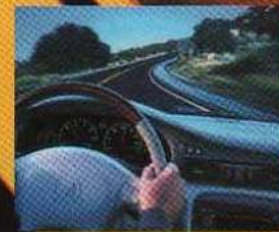
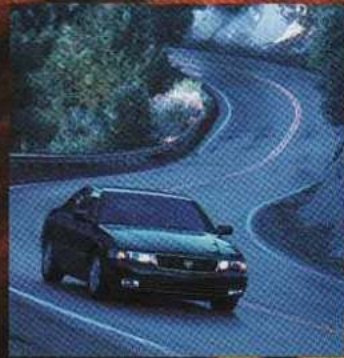


StabiliTrak is a predictable  
that a curve or slippery  
system automatically applies  
automatic and has been



force in unpredictable circumstances. When sensors and Seville's computer determine  
conditions threaten to compromise vehicle stability at any speed (left), the StabiliTrak  
one of the front brakes to help guide you through safely (right). StabiliTrak is  
hailed as the most advanced integrated stability control system in the world.







Jack Brabham. John Surtees. These names are justly famous because the men behind them could shift gears with virtuoso talent. And that ability made them champions. In a sense, you'll be joining their ranks in Seville STS through the genius of Performance Algorithm Shifting (PAS). It's the newest Northstar technology and combines the best aspects of an automatic transmission for normal driving with the response and performance of a manual gearbox for more spirited driving. PAS comes standard in STS and is very much like having a Formula 1 driver do the shifting for you whenever the road ahead calls for immediate response or spirited fun. Under normal conditions, PAS is inactive. Instead, Seville's electronically controlled automatic transmission tailors its shifts to your driving style and the road. But when more acceleration is introduced, higher cornering rates are generated and greater demands are placed on the brakes, PAS comes into play. Once it's activated, PAS extracts optimum response from your transmission in two ways.

throughout a maneuver. Second, it selects the perfect higher timed, crisp shifts that give you a new sense of confidence



First, it keeps the transmission in the lowest practical gear gears as speed and engine RPM increase. You get exquisitely and control. Say you brake hard into a challenging Swiss

mountain turn with the intention of applying brisk throttle as you come out. PAS reads your move and anticipates the exit by instantly downshifting one or two gears. As you step into the throttle and pull out of the curve, there's no waiting for additional torque and acceleration. The reward is immediate and PAS remains active through all the S-curves you care to tackle. A sweeping freeway entrance ramp can also inspire confidence, thanks to PAS. These arcs of pavement generally create high cornering forces as you hold the throttle at a moderate level. But you may need plenty of power and acceleration at the end of the ramp to merge safely into the traffic stream. PAS recognizes this and smoothly sets up the perfect gear in anticipation of that demand. All you do is press the pedal and feel the power. It's like a skilled "heel-and-toe" performance in a manual shift car. Only you're in the new Seville STS and its performance envelope is waiting for you. In the Alps or Adirondacks.



“We erased the  
acoustic canvas  
so you can  
add anything  
you want.”

(SCOTT REILLY NOISE INTEGRATION ENGINEER)

「音響キャンバスを取り除いたので、好きなものが何でも  
追加できます」。

“WIR ELIMINIERTEN DEN AKUSTIKPLANE, DAMIT SIE BELIEBIG AUSSTATTEN KÖNNEN.”

Even the finest instrument can create unpleasant sounds. Ask any music teacher. Or the development team for the new Seville. To maintain harmony in this automotive masterpiece, these experts appointed a “Noise Czar” to resolve issues that might deter Seville’s goal of being one of the most quiet luxury sedans in the world. As a result, wind, road and mechanical noise have been virtually banished from the Seville cabin, creating an automobile that’s dramatically quieter than before. Your thoughts and the song of the open road are all that remain.

18







Seville STS Interior











Man's physical evolution has remained essentially static for a few thousand years now. So, Seville engineers thought it was time for a luxury automobile interior that finally catches up. To make this leap, they placed real people in imaginary driving situations, all created in a theatre-like driving simulator. This advanced yet practical research helped locate Seville's controls in natural and easily visible positions. "Human factors engineering" also helped design an instrument display featuring large, readable gauges that appear to float in three-dimensional space.



Unsurpassed storage • Rear theatre seating • Task-oriented lighting • Adaptive front seating • Simulator-researched controls

Near your right hand, the new gated-shifter provides positive positioning, even at night. For your eyes, interior task lighting was designed to minimize glare and illuminate key areas, not shine in your eyes. What's more, over 26 liters of convenient storage space were designed into Seville's front cabin area alone. In the rear, seats are slightly elevated to give a theatre-like position and a more open view of the road ahead. All told, Seville's interior is destined to be recognized as one of the world's consummate examples of ergonomic automotive interior design.



Seville SLS Interior





“It’s a seamless  
integration of  
technology...from  
any perspective  
in the world.”

( JACK HORVATH SEVILLE CHIEF ENGINEER )

「世界の最高基準から見ても、テクノロジーがシームレスに  
一体化している —それがこの車です」。

“EINE NAHTLOSE INTEGRATION MODERNSTER TECHNOLOGIE...AUS JEDER PERSPEKTIVE DER WELT.”

The glamour of an automotive marque is often set by styling. But the full measure of its acclaim must also be found in engineering. For without the benchmarks of innovation and mechanical precision, the most stirring designs are soon tarnished. This is why Seville for 1998 stands as a consummate fusion of form and character. From its very structure to its suspension, computers, audio and communications systems, Seville clearly establishes a new precedent for technology, comfort and control. One that challenges the world with an even higher standard.

28



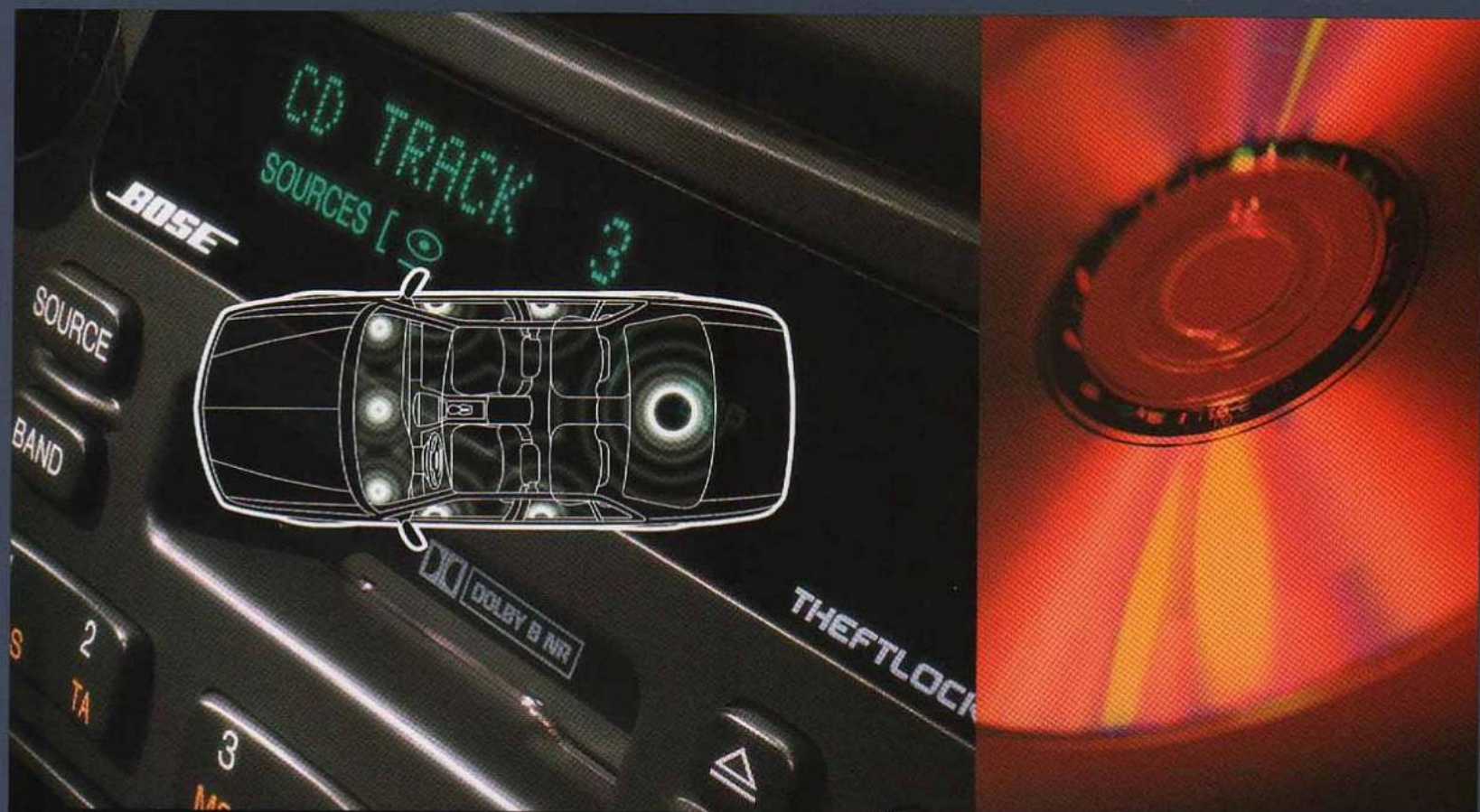


Seville introduces an unparalleled level of driving comfort with Adaptive driver and front passenger seats. These available seats literally tailor themselves to the physique and personal preferences of the individual, then readjust themselves every four minutes to maintain their settings...even if you've shifted position. How? A computer-linked network of 10 air cells reads body pressure points as you drive. If you change position, specific cells inflate or deflate to keep your preferred setting. This seat is endorsed by the American Physical Therapy Association.

29



# The Bose Music System



True to its spirit of innovation, Seville radios now feature Radio Data System (RDS) technology. When tuned to participating FM stations, RDS can show song titles and artists' names, scan for the style of music you prefer, interrupt CD or cassette listening with emergency messages or traffic reports and even keep your **98.7 JAZZ** favorite program tuned as you travel cross-country. Then consider the Bose 4.0 music system. Dr. Amar Bose calls it "a new world standard for automotive music systems." Standard in STS or optional equipment in SLS, the Bose 4.0 system's effect uses both acoustics and "psychoacoustics," optimized through computer programs that mapped every surface and niche of Seville's interior throughout its development. This acoustic blueprint allowed engineers to tune and locate every component of the 425-Watt system to achieve supremely optimized tonal accuracy and equalization. Even with the windows open, a cabin microphone reads ambient noise, then increases output in the ranges being masked. Performance? Perhaps the Bose 4.0 system should be registered with ASCAP and BMI.

30







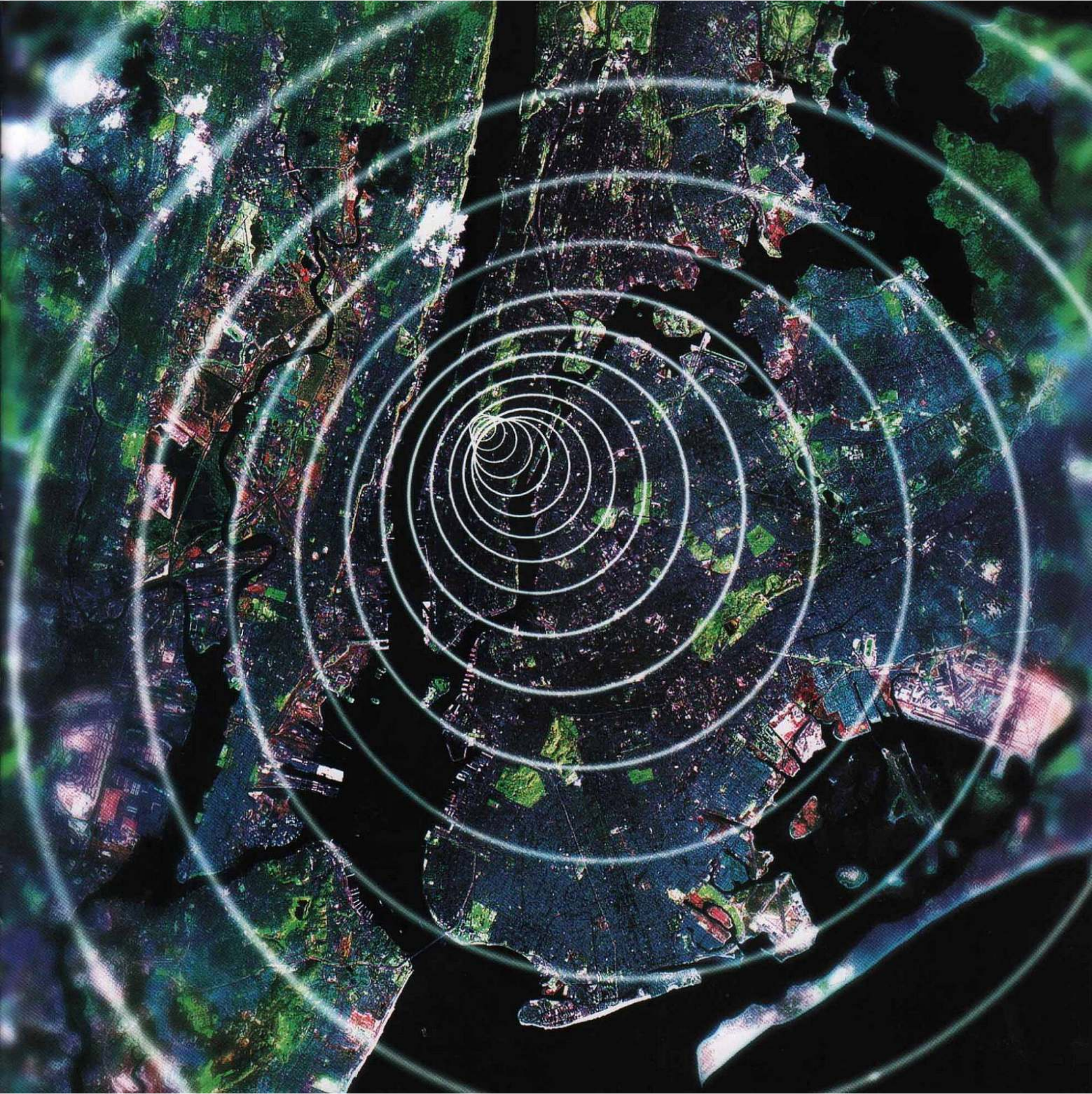
# The OnStar System



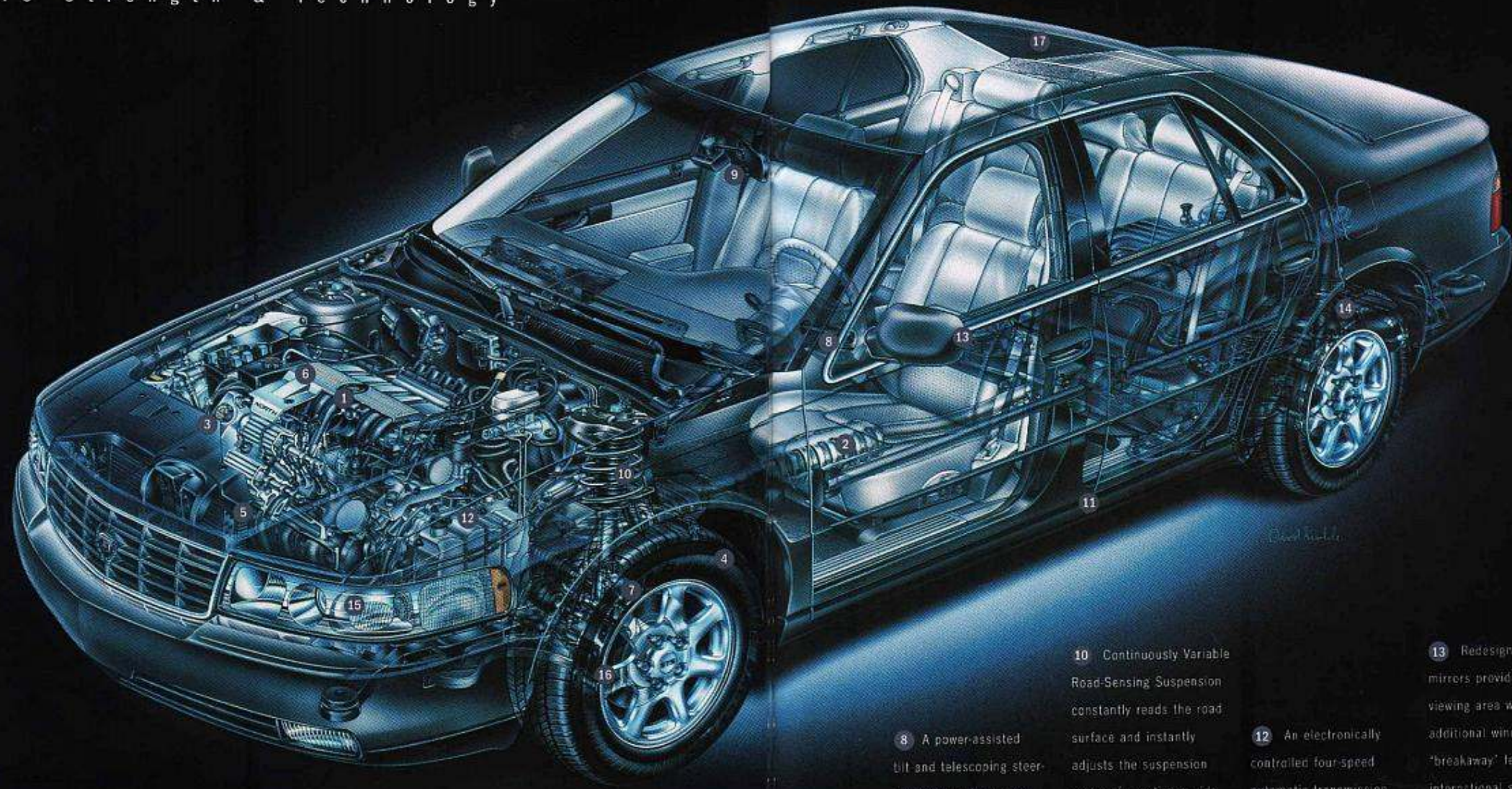
When the first Cadillac was built, man had yet to achieve powered flight. Today, orbiting satellites help Seville owners find their way when in unfamiliar territory. We call this astounding technology OnStar. It's available from participating Cadillac dealers and gives you an extraordinary level of safety, security and convenience. Three key elements comprise OnStar: an OnStar cellular phone in your Seville, a global positioning system satellite receiver and the OnStar Center, which is manned 24 hours a day, 365 days a year. Searching for directions, an ATM or the nearest French restaurant? OnStar's database of nearly 3.2 million listings can help. Run out of gas? Just phone OnStar. An advisor can send help to your location. Should you lock yourself out of your Seville, the OnStar Center can send a cellular data signal to open the doors. OnStar can even interface with Seville's computer to help diagnose mechanical problems while you're on the road. And if your Seville is ever stolen, OnStar can use GPS technology to help police track and recover it. OnStar. It's like having an executive staff on call to handle it all.

32









**1** Special Helmholtz tuning chambers have been added to Seville's induction system to help quell noise.

**2** Specifically designed stainless steel mufflers and resonators enhance quiet without strangling Seville's rewarding exhaust note.

**3** A new, high-output generator is mounted directly to the engine block to help reduce vibration. It is liquid-cooled for performance and durability.

**4** Special tires for Seville were created by Goodyear. The available Z-rated design for STS allows it to achieve Autobahn speeds of 150 mph with outstanding grip.

**5** Blades of the engine cooling fans are specially designed for quiet operation, and electronically controlled for optimum effectiveness.

**6** Seville's 32-valve Northstar V8 features dual overhead cams, sequential port fuel injection, electronic ignition and a scheduled tune-up interval of up to 100,000 miles.\*

**7** Aluminum suspension components help reduce unsprung mass and optimize Seville's weight balance.

**8** A power-assisted tilt and telescoping steering wheel makes entry and exit of Seville virtually unrestricted.

**9** Rainsense wipers automatically activate at the first hint of droplets on the windshield.

**10** Continuously Variable Road-Sensing Suspension constantly reads the road surface and instantly adjusts the suspension system for optimum ride and control.

**11** Weld-bonded body components offer stiffness, improved strength and an enhanced level of quiet.

**12** An electronically controlled four-speed automatic transmission with Performance Algorithm Shifting tailors itself to your driving pattern. Inside, Dexron III transmission fluid is formulated to last the life of the car.\*

**13** Redesigned side mirrors provide greater viewing area without additional wind noise. A "breakaway" feature meets international standards.

**14** A compact MultiLink rear suspension allows 34% more wheel travel and rebound, plus optimum interior space for the trunk.

**15** Tungsten-halogen "projector beam" headlamps give Seville exceptional driving illumination in any country and any weather.

**16** Four-wheel anti-lock brakes and all-speed traction control provide added confidence.

**17** Diversity radio antennae are imbedded in the windshield and rear window for improved "two point" reception and greater protection from damage.

\*Maintenance needs vary with different uses and driving conditions. See your Owner's Manual for more information.



“A major emphasis  
was to maintain  
integrity of  
the passenger  
compartment.”

( TOM HASSETT VEHICLE SAFETY INTEGRATION ENGINEER )

「もっとも大事だと考えているのは、  
乗員コンパートメントの完全さを保つことです。」

“EINES DER WICHTIGSTEN ZIELE WAR DIE AUFRECHTERHALTUNG DER INTEGRITÄT DES PASSAGIERRAUMS.”

Make no mistake. A careful and cautious driver is the ultimate safety device. But when the other person isn't so vigilant, you can be thankful for some very careful engineers who have designed some very ingenious safety advancements into the 1998 Seville. The result is an extensively crash-tested luxury automobile, engineered to help protect all of its occupants in a mishap. Seville not only meets or exceeds every U.S. federal safety standard, but is also designed to address other demanding criteria established by critical European organizations.

36



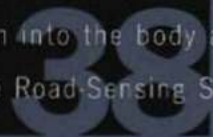




S a f e t y   a n d   S e c u r i t y



Seville's computer-crafted body structure and internal safety cage meet all applicable worldwide impact standards for front, side, rear, offset crash and roof crush. In fact, Seville already fulfills stringent frontal offset and side-impact European requirements for the year 2003. A key element to this strength is a pair of hydroformed steel beams that run from the windshield, over the doors and down into the body at the rear. And since Athens traffic can be hectic, Seville also features ABS, traction control, StabiliTrak and Continuously Variable Road-Sensing Suspension.





Beyond its rigid body structure, Seville has a vanguard of safety and security systems found in no other competitive luxury sedan in the world.

For example, front safety belts are mounted directly to the seat and maintain optimum fit during adjustment. In addition, these belts are equipped with special "pretensioners" that trigger simultaneously with front air bag deployment. They remove slack from the belts and help position the



passengers for optimum air bag effectiveness. Beyond the dual front Next Generation Air Bags, Seville goes a step further with two independent, front side-impact air bags. These are also part of the seat and deploy consistently, regardless of seat adjustment position. Peace of mind is also an important consideration for Seville: Its

50.0<sup>MI</sup> Northstar V8 is capable of traveling up to 50 miles without engine coolant or damage to the

engine. So, if you ever have a complete coolant loss somewhere south of Madrid, chances are you can drive to a safe repair location. Under

normal conditions, Seville's daytime running lamps enhance safety by providing unmistakable visibility to oncoming traffic. But even before you

step into Seville, its security systems watch over you. The remote keyless entry system locks or unlocks doors from up to 10 meters away with

the touch of a key fob button. This signal can also activate interior lights and Seville's exterior perimeter lighting system. This illuminates the

inside of the vehicle as well as the surrounding area to make your approach and entry that much more secure. In addition, special program-

mable features allow you to select which door or doors will unlock when you shift into "Park." These settings, and more, are specific to each

key fob. As you arrive at home, an optional three-channel garage door opener can open the gate and garage door and can even turn on your

home's interior lights. To help assure that your Seville remains where you park it, a transponder imbedded in the ignition key matches just one

of three trillion possible security codes with the powertrain control

match, fuel and starter systems are disabled and your Seville refuses



module. If the electronic system detects a mis-

to cooperate. In Rome, Italy, or Rome, New York.

39





OPEN  
24 hours





Now more than ever before, Seville's Ownership Services will make you one of the most cared for luxury car owners in the world. This important feature begins with Cadillac Roadside Service, which is available 24 hours a day, 365 days a year, in the U.S. and Canada. It can bring help for flat tires, lost keys or empty petrol tanks at no charge for 48 months or 50,000 miles. Just phone 1-800-882-1112. Your call is answered by a Cadillac-trained advisor who, in many cases, can quickly assist you over the phone. If necessary, a Cadillac-authorized technician with a specially equipped service vehicle, stocked with parts, tools, cellular phones and key making equipment, can be dispatched to your location. Trip Interruption Protection may reimburse you for hotel, food and even alternate transportation incurred as a result of a warranted repair. This coverage also remains in effect for 48 months or 50,000 miles. And don't forget that your General Motors Bumper to Bumper Limited Warranty Protection safeguards your Seville, including its tires, for 48 months or 50,000 miles with no deductible. Body rust-through is covered for six years or 100,000 miles. Should your Seville require repairs covered under your new vehicle limited warranty, Alternate Transportation Options are offered by your dealer. For same day service, *Privileges* your dealer will furnish shuttle service. For an overnight warranted repair, your dealer may provide you with a loaner car if one is available. So ask about Gold Key Courtesy Transportation. When you first take possession of your new Seville, Gold Key Delivery includes familiarization with your new vehicle, introduction to important dealership personnel and provides you with a complete package of ownership materials. It's a whole new world of automobile ownership. See your dealer for details.

41



# Features & Options: A Partial List

## (SLS INTERIOR)

AIR BAGS, FRONT—DRIVER AND PASSENGER, NEXT GENERATION\*;  
SIDE IMPACT—DRIVER AND FRONT PASSENGER  
ANALOG INSTRUMENT CLUSTER  
ARTICULATING FRONT HEADRESTS/  
POWER HEIGHT ADJUSTMENT  
AUTOMATIC DOOR LOCKING SYSTEM  
CABIN AIR FILTRATION  
CHILD SECURITY REAR DOOR LOCKS  
CONTROLLED-CYCLE WIPERS  
CRUISE CONTROL  
DIVERSITY ANTENNA  
DRIVER INFORMATION CENTER  
ELECTRONIC DUAL-ZONE  
CLIMATE CONTROL  
FINGERTIP STEERING WHEEL CONTROLS  
FLASH-TO-PASS HEADLAMPS  
FULL FLOOR CONSOLE WITH  
GATED-SHIFTER  
NUANCE LEATHER SEATING AREAS  
PASS-KEY III SECURITY SYSTEM  
PASS-THROUGH REAR SEAT  
POWER DOOR LOCKS, WINDOWS  
AND HEATED SIDEVIEW MIRRORS  
POWER FRONT-SEAT  
ADJUSTERS/RECLINERS  
PROGRAMMABLE FEATURES:  
AUTO DOOR LOCK SETTINGS  
RKE PARK LAMP FLASH  
PERIMETER SECURITY LIGHTING  
TASK ORIENTED LIGHTING/  
READING LAMPS  
REAR SIDE WINDOW LOCKOUT  
REMOTE FUEL DOOR RELEASE  
REMOTE KEYLESS ENTRY SYSTEM  
REMOTE TRUNK RELEASE  
RETAINED ACCESSORY POWER  
SAFETY BELTS, 3-POINT, ALL POSITIONS  
TILT STEERING WHEEL  
TRACTION CONTROL ON/OFF SWITCH  
VALET LOCKOUT  
ZEBRANO WOOD TRIM

## (SLS EXTERIOR)

ALTERNATOR, HIGH-OUTPUT,  
LIQUID-COOLED  
AUTOMATIC PARKING BRAKE RELEASE  
DAYTIME RUNNING LAMPS  
ELECTRONIC BRAKE WEAR SENSORS  
ELECTRONIC LEVEL CONTROL  
FRONT/REAR CRUSH ZONES  
HYDROFORMED STEEL ROOF BEAMS  
HEADLAMPS, PROJECTOR TYPE, TUNG-  
STEN-HALOGEN WIPER-ACTIVATED  
SOLAR-RAY TINTED GLASS  
STAINLESS STEEL EXHAUST SYSTEM  
STEEL SAFETY CAGE  
TWILIGHT SENTINEL

## (SLS OPTIONAL EQUIPMENT)

ACCENT STRIPING  
ELECTRONIC COMPASS  
FRONT-SEAT POWER LUMBAR  
CONTROLS  
HANDS-FREE CELLULAR PHONE  
HEATED FRONT AND REAR  
SEATING AREAS;  
ONStar SYSTEM (WITH CELL PHONE,  
DEALER INSTALLED)  
RAINSense WIPER SYSTEM  
STEERING WHEEL, POWER TILT/  
TELESCOPE  
SUNROOF, EXPRESS OPEN  
THREE-CHANNEL GARAGE DOOR OPENER  
TRUNK STORAGE SYSTEM  
WOOD TRIM PACKAGE, STEERING  
WHEEL AND SHIFT KNOB

## (STS STANDARD)

ALL SLS STANDARD FEATURES PLUS:  
AUTO-DIMMING DRIVER'S SIDE MIRROR  
FOG LAMPS  
MEMORY PACKAGE, 2 DRIVERS:  
EIGHT-WAY DRIVER'S SEAT  
DRIVER'S LUMBAR SETTING  
DRIVER'S SEAT EXIT POSITION

OUTSIDE REARVIEW MIRROR  
SETTING  
CLIMATE CONTROL SETTING  
RADIO STATION PRESETS  
NUANCE PERFORATED LEATHER  
SEATING AREAS  
PERFORMANCE ALGORITHM SHIFTING  
PROGRAMMABLE FEATURES WITH  
REMOTE OR KEY-IN MEMORY RECALL  
RAINSense WIPERS  
STEERING WHEEL, POWER TILT/  
TELESCOPE

## (STS OPTIONAL)

ADAPTIVE SEATING, FRONT  
ELECTRONIC COMPASS  
ENGINE BLOCK HEATER  
HANDS-FREE CELLULAR PHONE  
HEATED FRONT/REAR SEATING AREAS\*\*  
ONStar SYSTEM (WITH CELL PHONE,  
DEALER INSTALLED)  
SUNROOF, EXPRESS OPEN  
THREE-CHANNEL GARAGE DOOR OPENER  
TRUNK STORAGE SYSTEM  
WOOD TRIM PACKAGE, STEERING  
WHEEL AND SHIFT KNOB

## (RADIOS)

### (SLS STANDARD)

(A) EIGHT-SPEAKER, 250-WATT SYSTEM  
WITH AM STEREO/FM STEREO,  
CASSETTE, SINGLE-SLOT CD PLAYER  
AND THEFTLOCK

### (SLS OPTIONAL)

EIGHT-SPEAKER, 250-WATT SYSTEM  
WITH AM STEREO/FM STEREO,  
CASSETTE, MINI-DISC PLAYER AND  
THEFTLOCK (NOT PICTURED)

## (OPTIONAL FOR SLS, STANDARD FOR STS)

(B) BOSE 4.0 HIGH PERFORMANCE  
8-SPEAKER 425-WATT MUSIC SYSTEM  
WITH AM STEREO/FM STEREO,  
SIGNAL SEEK/SCAN, DIGITAL DISPLAY,  
CASSETTE, SINGLE-SLOT CD PLAYER,  
WEATHER BAND, DIGITAL SIGNAL  
PROCESSING, RADIO DATA SYSTEM,  
AUTOMATIC VOLUME CONTROL AND  
THEFTLOCK

## (OPTIONAL FOR SLS AND STS)

BOSE 4.0 HIGH PERFORMANCE  
8-SPEAKER 425-WATT MUSIC SYSTEM  
WITH AM STEREO/FM STEREO,  
SIGNAL SEEK/SCAN, DIGITAL DISPLAY,  
CASSETTE, MINI-DISC PLAYER, WEATHER  
BAND, DIGITAL SIGNAL PROCESSING,  
RADIO DATA SYSTEM, AUTOMATIC  
VOLUME CONTROL AND THEFTLOCK  
(NOT PICTURED)

## (OPTIONAL FOR SLS AND STS)

SIX-DISC FRONT CONSOLE-MOUNTED  
CD CHANGER

## \*A SPECIAL NOTE TO PARENTS:

CHILDREN ARE GENERALLY SAFER IF  
THEY RIDE IN A REAR SEAT USING  
APPROPRIATE CHILD SAFETY SEATS AND  
RESTRAINTS, WHICH IS WHY GENERAL  
MOTORS RECOMMENDS THAT  
CHILD SAFETY SEATS BE PROPERLY  
SECURED IN A VEHICLE'S REAR SEAT.  
SEE YOUR OWNER'S MANUAL AND  
CHILD SAFETY SEAT'S INSTRUCTIONS  
FOR MORE INFORMATION.

\*\*HEATED SEATING AREAS NOT  
AVAILABLE WITH ADAPTIVE SEATS.

NOTE: PHOTOGRAPHS IN THIS BROCHURE MAY  
FEATURE VEHICLES WITH OPTIONAL EQUIPMENT.





STS DIMENSIONS



(STS PERFORMANCE)

0-60 MPH: 6.9 SEC.  
TOP SPEED: 150 MPH<sup>1</sup>  
BRAKING, 70-0 MPH: 182 FT.

(SLS PERFORMANCE)

TOP SPEED: 112 MPH  
BRAKING, 70-0 MPH: 192 FT.

(SLS & STS)

EPA EST. MPG: 17 CITY/26 HWY.  
MAX. CRUISING RANGE:  
481 MILES/774 KM<sup>2</sup>

(ENGINE)

NORTHSTAR 4.6L V8, 32-VALVE DOHC  
STS: 300 HP, 295 FT-LBS TORQUE  
SLS: 275 HP, 300 FT-LBS TORQUE  
ALUMINUM BLOCK & HEADS  
BORE X STROKE: 3.66 IN. (93 MM) X  
3.31 IN. (84 MM)  
DISPLACEMENT: 279 CU. IN./4565 CC  
COMPRESSION: 10.3:1  
VALVETRAIN: 2-STAGE CHAIN-DRIVEN  
DOUBLE OVERHEAD CAMSHAFTS,  
BUCKET TYPE HYDRAULIC TAPPETS,  
4 VALVES PER CYLINDER  
IGNITION: CRANK-TRIGGERED DIRECT  
FIRE WITH PLATINUM-TIPPED PLUGS  
INDUCTION: TUNED, SEQUENTIAL PORT  
FUEL INJECTION  
MAX. REVS: 6,500  
COOLANT: DEX-COOL, UP TO  
150,000 MILES<sup>3,4</sup>

RECOMMENDED PETROL: UNLEADED  
PREMIUM. UNLEADED 87 OCTANE  
REGULAR MAY BE USED WITH  
DIMINISHED PERFORMANCE AND  
FUEL ECONOMY

(DRIVELINE)

BRAKE/TRANSMISSION SHIFT  
INTERLOCK  
TYPE: FRONT ENGINE, FRONT-WHEEL  
DRIVE  
TRANSAXLE: ELECTRONICALLY  
CONTROLLED 4-SPEED AUTOMATIC  
WITH OVERDRIVE AND VISCOUS  
LOCK UP TORQUE CONVERTER  
CLUTCH  
RATIOS: 1ST.....2.96:1, 2ND.....1.63:1,  
3RD.....1.00:1, 4TH.....0.68:1,  
REVERSE.....2.13:1  
FINAL DRIVE RATIO: STS 3.71:1  
SLS 3.11:1

(CHASSIS/SUSPENSION)

SUSPENSION: CONTINUOUSLY  
VARIABLE, ROAD-SENSING  
FRONT: INDEPENDENT, MACPHERSON  
STRUT/COIL SPRING WITH  
STABILIZER BAR  
REAR: INDEPENDENT, MULTILINK  
COIL SPRINGS, STABILIZER BAR AND  
AUTOMATIC LEVEL CONTROL  
DAMPERS, FRONT/REAR: ELECTRONIC  
STABILIZER BAR DIA., FRONT: STS 118  
IN./30MM, SLS 110 IN./28MM

STABILIZER BAR DIA., REAR: STS .87  
IN./22MM, SLS .71 IN./18MM  
STEERING TYPE: RACK-AND-PINION  
WITH MAGNASTEER III SPEED-  
SENSITIVE VARIABLE-ASSIST  
STEERING RATIO: 14.8:1  
TURNS, LOCK-TO-LOCK: 2.4  
TURNING CIRCLE: 40.5 FT./12.34 M.  
WHEELS: CAST ALUMINUM, 16 IN.  
(406MM) X 7 IN. (178 MM)

TIRES: STS: GOODYEAR EAGLE LS,  
P235/60R16 H-RATED, OPTIONAL:  
EAGLE P235/60ZR16  
SLS: GOODYEAR INTEGRITY  
P235/60R16 S-RATED

BRAKES: POWER 4-WHEEL DISC  
WITH ABS AND ROAD TEXTURE  
DETECTION

FRONT DISCS: VENTED, 1185 IN.  
(301MM) X 1.26 IN. (32MM)

REAR DISCS: SOLID, 1161 IN.  
(295MM) X .43 IN. (11MM)

STABILITY ENHANCEMENT SYSTEM:  
STABILITRAK, ALL-SPEED  
TRACTION CONTROL SYSTEM:  
ALL-SPEED

(CAPACITIES)

OIL: 7 QTS./ 6.6 L.  
COOLANT: 12.5 QTS./11.8 L.  
PETROL: 18.5 GAL./70.7 L.  
BATTERY: 12 V/ 880 CCA  
TOWING: 3000 LBS./1362 KG  
TRUNK: 15.7 CU. FT./445 L.

(INTERIOR DIMENSIONS)

HEAD ROOM: FRONT: 38.1 IN./969MM  
REAR: 38.0 IN./966MM  
LEG ROOM: FRONT: 42.5 IN./1079MM  
REAR: 38.2 IN./970MM  
HIP ROOM: FRONT: 55.6 IN./1411MM  
REAR: 57.5 IN./1460MM  
SHOULDER ROOM:  
FRONT: 59.1 IN./1501MM  
REAR: 58.0 IN./1474MM  
INTERIOR VOLUME: 119.8 CU. FT./  
3.39 CU. M.  
SEATING CAPACITY: FIVE PERSONS

<sup>1</sup> REQUIRES OPTIONAL Z-RATED TIRES.

<sup>2</sup> ESTIMATED HIGHWAY RANGE: MULTIPLY EPA  
HIGHWAY ESTIMATE BY FUEL TANK CAPACITY.

<sup>3</sup> MAINTENANCE NEEDS VARY WITH DIFFERENT  
USES AND DRIVING CONDITIONS. SEE YOUR  
OWNER'S MANUAL FOR MORE INFORMATION.

<sup>4</sup> SYSTEMS ORIGINALLY FILLED WITH DEX-  
COOL MUST BE SERVICED WITH DEX-COOL.

(WHEELS)

STS STANDARD: (A) OPEN 16" X 7"  
(406 X 178 MM) CAST ALUMINUM  
STS OPTIONAL: (B)  
16" X 7" (406 X 178 MM) CAST  
ALUMINUM, CHROME FINISH  
SLS STANDARD: (C) MACHINED  
16" X 7" (406 X 178 MM)  
CAST ALUMINUM  
SLS OPTIONAL: (D) MACHINED  
16" X 7" (406 X 178 MM)  
CAST ALUMINUM, CHROME FINISH





## A c q u i s i t i o n   O p t i o n s



Because you've chosen Seville as the next luxury car in your garage, we want it to be precisely the one you want. The right color. The right interior. And with the right equipment. This is where Custom Xpress Delivery plays a vital role. Your dealer simply enters the features you prefer into the computer system and, if there's a Seville in stock nearby that fits your requirements, it can usually be delivered the next day. Otherwise, your dealer can order the Seville you want and, in most cases, have it washed and ready for you within three weeks. In the meantime, you may want to decide whether to buy or lease. If you decide to purchase your Seville, GMAC financing is available through your dealer. However, SmartLease allows you to acquire a new Seville more frequently. It also minimizes costs and lowers monthly payments compared to a conventional purchase. SmartLease can also hold significant tax advantages for businesses. Check with your accountant. SmartLease Plus embodies all of the advantages of SmartLease but without the inconvenience of monthly payments. Don't forget The GM Card. It allows you to apply your Bonus Earnings toward the purchase or lease of a new Seville. If you carry The GM Card, consider putting its purchasing power to work for you. The GM Protection Plan is actually an extended service contract for your new Seville. It is the only one backed by General Motors and can protect your vehicle for as long as 6 years or 100,000 miles from the date of your Seville's first delivery or use.



#### IMPORTANT WORDS ABOUT THIS CATALOG

We have tried to make this catalog as comprehensive and factual as possible. We reserve the right, however, to make changes at any time, without notice, in prices, colors, materials, equipment, specifications, models and availability. Since some information may have been updated since the time of printing, please check with your Seville dealer for complete details.

#### ENGINES

Sevilles are equipped with engines produced by different operating units of GM, its subsidiaries or suppliers to GM worldwide.

#### ASSEMBLY

Sevilles are assembled by different operating units of General Motors, its subsidiaries or suppliers to GM worldwide. We sometimes find it necessary to produce Sevilles with differently sourced components than originally scheduled. All such components have been approved for use in Sevilles and will provide the quality performance associated with the Seville name. Since some options may be unavailable when your vehicle is assembled, we suggest that you verify that your vehicle includes the equipment you ordered, or if there are changes, that they are acceptable to you.

#### UPDATED SERVICE INFORMATION

Cadillac regularly sends its dealers useful service bulletins about Cadillac products. Cadillac monitors product performance in the field. We then prepare bulletins for servicing our products better. Now you can get these bulletins, too. Ask your dealer. To get ordering information, call toll-free 1-800-551-4123.

#### SAFETY AND SECURITY

The following are just some of the features found on the 1998 Seville.

**OCCUPANT PROTECTION:** Adjustable upper belt anchors · Automatic door locks · Child comfort guides · Child security door locks and door retention components · Intentional-set belt comfort feature · Manual lap/shoulder safety belts, outboard rear-seat positions · Manual lap/shoulder belts and air bags, driver/right front passenger and side · Passenger-guard inside door lock handles · Power window lockout · Safety belt cinch capability for child seats. **SECURITY:** Anti-lockout feature · Audible theft-deterrent system · Battery rundown protection · Laser-etched VIN plate · PASS-Key theft-deterrent · Remote deck lid release · Remote inside hood release · Remote keyless entry · Stolen vehicle tracking/emergency communication (optional) · **CRASH AVOIDANCE:** Anti-lock brakes, front and rear · Automatic daytime running lamps · Automatic windshield wipers · Brake/transmission shift interlock · Cornering lamps · Disc brakes, front and rear, audible wear indicator · Door warning lamps or reflectors · Fog lamps · Front, side, rear window defoggers · Halogen headlamps · Inside electrochromic rearview mirror · Maintenance-free battery · Outside power rearview mirrors, heated, electrochromic · Stability enhancement · Steering wheel controls · Tinted glass windshield · Tires with built-in tread wear indicators · Traction control · Wiper-activated exterior lamps

Cadillac, the Cadillac emblem, Cadillac Roadside Service, Creating a Higher Standard, Dexron, DEX-COOL, Seville, General Motors, the GM emblem, The GM Card, Northstar, OnStar, Solar-Ray and Twilight Sentinel are registered trademarks and Magnasteer, Rainsense and StabiliTrak are trademarks of the General Motors Corporation. Cadillac Owner Privileges is a service mark of the General Motors Corporation. PASS-Key and TheftLock are registered trademarks of the Delco Electronics Corporation. GMAC and Smart Lease are registered trademarks of the General Motors Acceptance Corporation. Sunglasses: Sting by DeRigo USA. Map: Copyrighted by Universal Map, (800) 829-6277, and used with permission. Litho in U.S.A. 10/97 © 1997 GM Corp. All Rights Reserved. Always use safety belts and proper child restraints even with air bags. Children generally are safer when secured in a rear seat. See the Owner's Manual for more safety information.

#### WARRANTY / CORROSION PROTECTION

The GM 4-year/50,000-mile Gold Key Bumper to Bumper limited warranty covers repairs for any new Seville, including labor and parts, to correct any defects in material or workmanship occurring during the warranty period. The complete vehicle will be covered for 4 years or 50,000 miles, whichever comes first, except adjustments and normal maintenance items. Plus free towing and a portfolio of other services. There is no deductible on any Seville warranty. See your Seville dealer for terms of these limited warranties. Sevilles are designed and built to resist corrosion. All body sheet metal components are warranted against rust-through corrosion for 6 years or 100,000 miles. There is no deductible for rust-through repairs. Application of additional rust-inhibiting materials is not required under the corrosion coverage and none is recommended.

[www.seville.com](http://www.seville.com)



Printed on recycled paper with soy-based inks



#### IMPORTANT WORDS ABOUT THIS CATALOG

We have tried to make this catalog as comprehensive and factual as possible. We reserve the right, however, to make changes at any time, without notice, in prices, colors, materials, equipment, specifi-

#### SAFETY AND SECURITY

The following are just some of the features found on the 1998 Seville.

OCCUPANT PROTECTION: Adjustable upper belt anchors • Automatic door locks • Child comfort

## SEVILLE COLOR GUIDE

### EXTERIOR SELECTIONS



06 Mulberry



17 Silver Mist



21 Moonstone



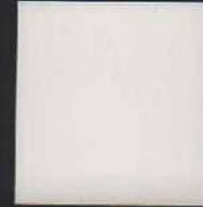
27 Baltic Blue



38 Emerald Green



39 Dk Adriatic Blue



40 Cotillion White



41 Sable Black



46 Shale



60 Gold Firemist



86 Crimson Pearl



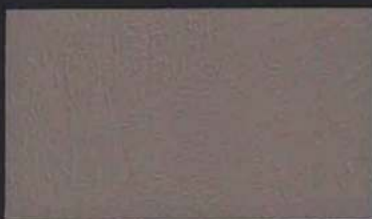
91 Polo Green



93 White Diamond

■ Available at extra charge.

### INTERIOR LEATHER SELECTIONS



#### WARRANTY / CORROSION PROTECTION

The GM 4-year/50,000-mile Gold Key Bumper to Bumper limited warranty covers repairs for any new Seville, including labor and parts, to correct any defects in material or workmanship occurring during the warranty period. The complete vehicle will be covered for 4 years or 50,000 miles, whichever comes first, except adjustments and normal maintenance items. Plus free towing and a portfolio of other services. There is no deductible on any Seville warranty. See your Seville dealer for terms of these limited warranties. Sevilles are designed and built to resist corrosion. All body sheet metal components are warranted against rust-through corrosion for 6 years or 100,000 miles. There is no deductible for rust-through repairs. Application of additional rust-inhibiting materials is not required under the corrosion coverage and none is recommended.

[www.seville.com](http://www.seville.com)



Printed on recycled paper with soy-based inks



# SEVILLE COLOR GUIDE

## EXTERIOR SELECTIONS



06 Mulberry



17 Silver Mist



21 Moonstone



27 Baltic Blue



38 Emerald Green



39 Dk Adriatic Blue



40 Cotillion White



41 Sable Black



46 Shale



60 Gold Firemist



86 Crimson Pearl



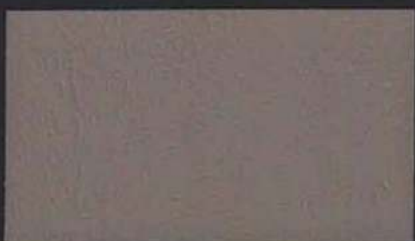
91 Polo Green



93 White Diamond

Available at extra charge.

## INTERIOR LEATHER SELECTIONS



15 Neutral Shale



16 Cappuccino Cream



19 Black



21 Dark Blue



67 Camel



77 Mulberry



92 Pewter

Note: Standard leather seating areas include printed leather inserts on the Seville SLS and perforated leather inserts on the Seville STS.



