

THE ALL NEW HOLDEN  
**COMMODORE**



**HOLDEN**

*There's nothing quite like a Holden.*



# World-Class Australian Design.

Since its introduction 20 years ago, the Holden Commodore has been constantly improved and developed.

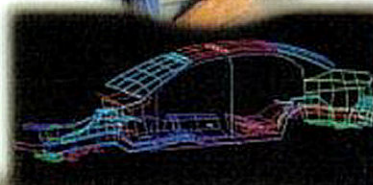
This all new Commodore is the latest vehicle in a remarkable evolutionary process.

The body is all new, designed from the ground up. It is stronger and larger, with more legroom, to provide a new level of driving enjoyment.

The new Commodore also introduces an array of new safety and comfort features; the result of world-class technology, design and engineering.

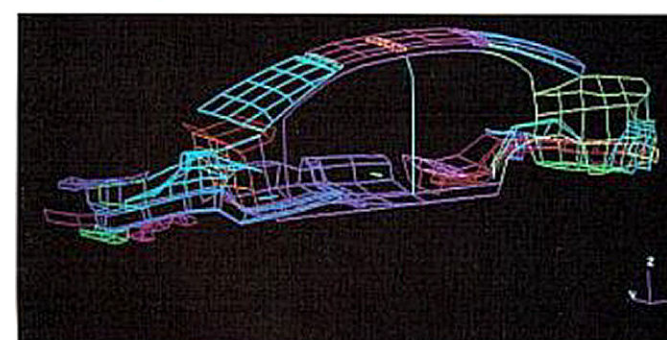
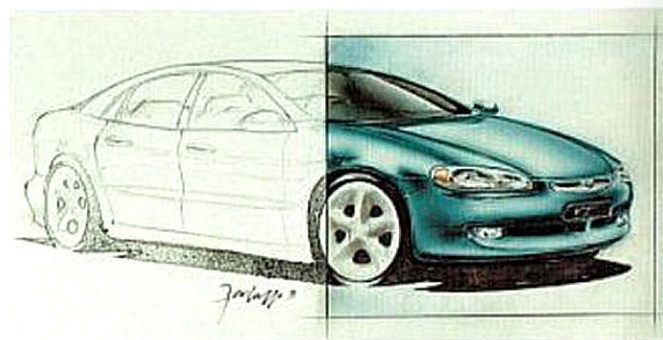
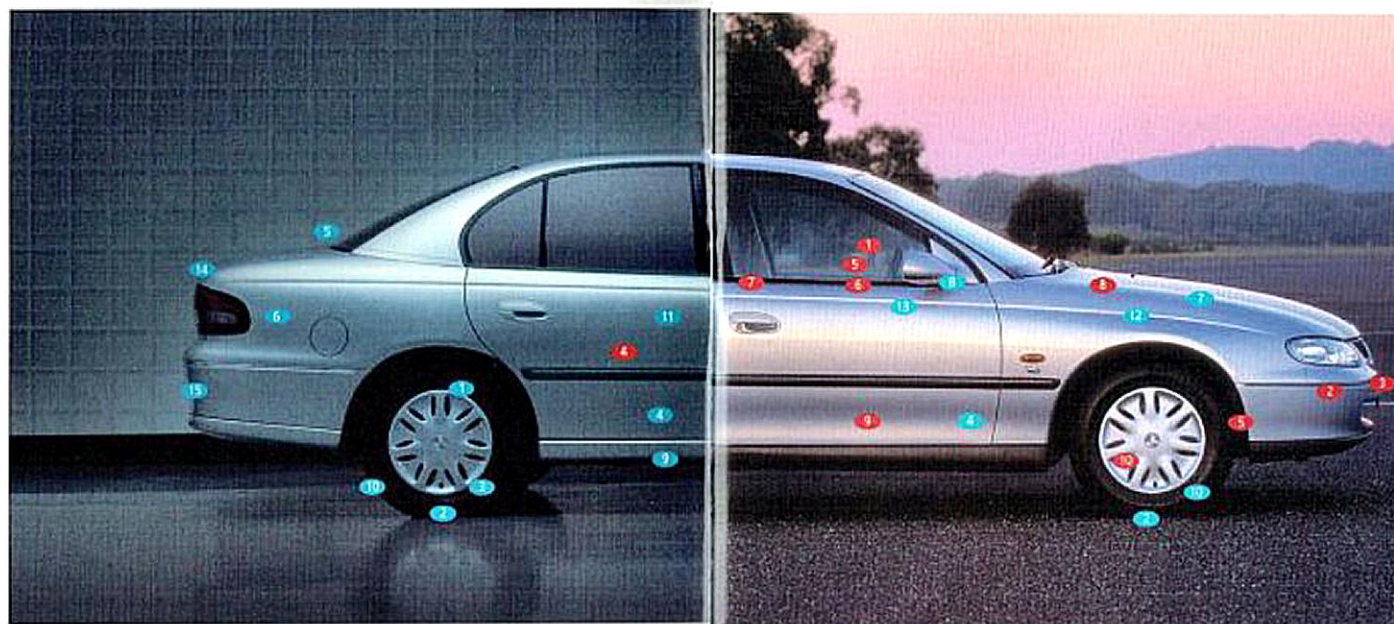
That adds up to a world-class car produced by Australians, specifically for Australians.

The all new Holden Commodore sets the standards that give you the driving edge.



# Commodore continues to improve the standards for safety in Australian cars.

- 1 Holden's Supplemental Restraint System (SRS) is a total safety system incorporating body structure design, seat belt technology and airbag design. Holden's safety engineers conducted over 100,000 crash simulations to maximise overall safety for as many different occupant types as possible.
- 2 Government tests cover frontal impacts at one vehicle speed. However, only 36% of accidents are direct frontal impacts so Holden testing covers a wide range of accident impact angles and speeds.
- 3 This has led to a unique new body design with Crash Pulse Optimisation (CPO). The crash pulse is the pattern of the forces created on a body in an accident.
- 4 The CPO body design includes enlarged, crumpled side rails and side, strong roof beams which help preserve occupant space and absorb crash forces in the event of a side impact.
- 5 The majority of accidents happen at low speeds. Holden's SRS is designed to minimise the risk of the injuries which can occur in these instances.
- 6 Unlike many other manufacturer's airbags, the Holden airbag has been designed to go off at higher speed. This assists in avoiding head and neck injury from unnecessary airbag inflation. The US government is now considering Holden research.
- 7 New pyrotechnic front seat pre-tensioners improve the effectiveness of front seat belts by tightening the belt before the occupant begins to move forward in a collision at over 20 km/h. This controls forward movement.
- 8 In the event of the front seat belt pre-tensioners being triggered, the on-board computer switches the engine ignition and fuel pump off, the interior light on and unlocks the doors as soon as the vehicle stops moving to allow access.
- 9 Special anti-submerging ramps in the seats minimise the risk of damage to internal organs by reducing the chance of the lap belt slipping over the abdomen during a collision.
- 10 A new brake system provides better braking performance and precise pedal feel, while the latest Bosch 5.3 Anti-Lock Braking System (ABS) helps to maintain steering control under extreme braking conditions.



### Smart thinking even in small details.

Slightly directional concept sketches form the basis of the computer aided design process.

Finite element modelling allowed engineers to analyse the total body for static stiffness, bending and torsion.

- 1 The introduction of Independent Rear Suspension (IRS) as standard across the model range, in leading markets, gives Commodore an ever better ride.
- 2 The widest wheel track in its class delivers more stable cornering and minimal body roll.
- 3 Holden Commodore is the first Australian built large family car to offer Traction Control (TC), which stabilises acceleration on a range of road surfaces. It is standard on Acadia, and available as an option with other automatic V6 models.
- 4 The all new Holden Commodore is longer and wider, with more legroom.
- 5 Commodore wagon has the largest cargo volume of any Australian wagon.
- 6 The 475 litre boot volume and flat floor provide more carrying space than ever before.
- 7 The Computer Aided Design (CAD) technology used for the body replicates even aircraft standards for panel smoothness.
- 8 The external mirrors create ridges in the air flow over the side windows to help keep them clean.
- 9 The all new Holden Commodore body is significantly stiffer resulting in a quieter, more comfortable interior ride.
- 10 The wheels are "pushed" out to each corner resulting in superior roadholding and more accessible interior space.
- 11 The high output heating and ventilation gives an increased airflow of 160 litres/second while the larger ducts provide 30% more airflow than previously to the rear seat passengers.
- 12 The smarter engine management routine assists faster starts, and slower kills for better fuel economy.
- 13 A display appears on the trip computer 100 km before a service is due reminding you to make an appointment.
- 14 A remote boot release is now added to the Power Key, so the boot can be opened easily when carrying shopping or other items.
- 15 The Commodore automatic now up to 1,200 kg without the need for an additional oil cooler. Heavy towing packages up to 2,100 kg are available.

# Because above all driving should be a pleasure.

The Holden Commodore has always been a driver's car and the all new Commodore continues to give you the driver's edge.

With Independent Rear Suspension (IRS) standard and an exhilarating range of engines, the Holden Commodore is a car that people will love to drive. Add the options of anti-lock braking (ABS) and Traction Control (TC) and you're driving controlled excitement.

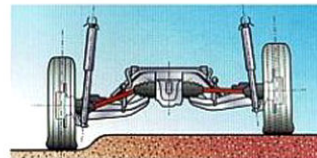
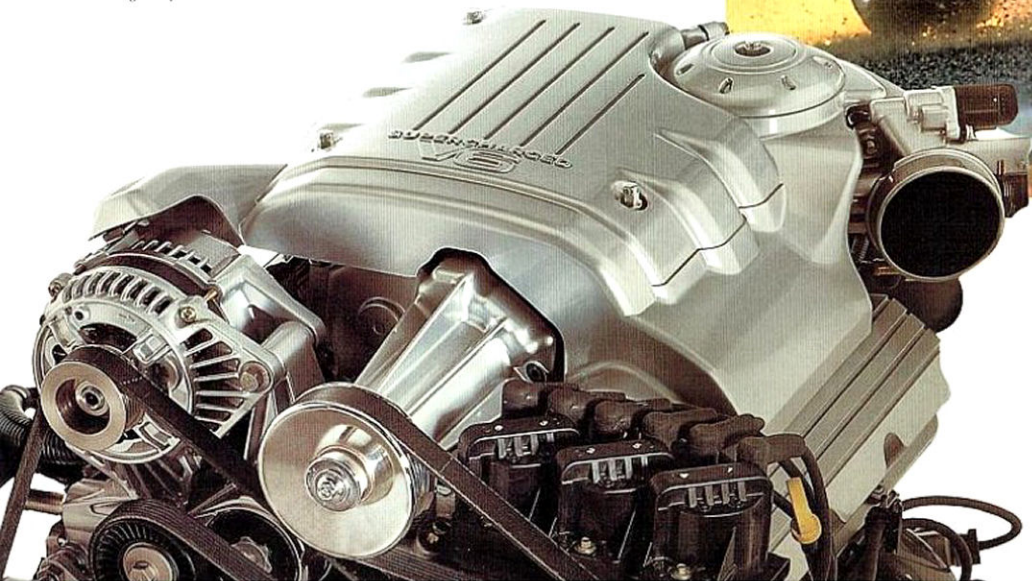
The all new body, engineered from the ground up in Australia, combined with a wide track and longer wheelbase,

gives you a firmer feel for the road, a smoother ride and more stable cornering.

Inside the cabin there's a trip computer, newly sculptured seats, a double DIN sound system and a new ergonomic layout that ensures driving enjoyment. Drivers and passengers who regularly travel long distances will appreciate the interior environment.

## **Supercharged V6 engine**

*Holden's optional Supercharged V6 engine delivers an impressive 171kW of power and 375Nm of smooth mid-range torque for overtaking, long uphill climbs and accelerating out of corners.*



## **Improved Independent Rear Suspension**

*Holden IRS, now standard on every Commodore sedan and wagon, utilises a suspension system shared with BMW, Jaguar and Mercedes-Benz. It offers superior ride over bumpy and uneven roads.*



## **Traction Control**

*Holden Traction Control (TC) uses anti-lock braking (ABS) technology to prevent loss of traction when accelerating. The ABS wheel sensors measure the speed at which each wheel is turning. If one or more wheels breaks traction and begins to spin, the information is fed to the central computer which can then retard engine spark, cut fuel to cylinders and apply braking pressure to ensure maximum road traction is maintained. Traction Control offers stable, "split-surface" acceleration on tram tracks, wet roads, snow, ice and when one wheel is on the gravel shoulder of a bitumen road.*

## Make an executive decision.

Commodore Executive offers outstanding value for money with improved Independent Rear Suspension (IRS), driver's airbag, six function trip computer, and the driver's electric seat height and cushion tilt adjustment, all as standard equipment.

Step outside the all new Holden Commodore and see the stylish result of some leading design technology.

That's only part of the story.

Every Commodore owner will benefit from the new larger body which has more space inside.

That means increases in head and leg room.

You'll find innovation abounds, such as a sound system which has enlarged controls to make it simple

and safer to operate.

The front seat head rests adjust, not only for height, but also for fore and aft settings.

And the Executive now adds the convenience of twin cup holders in centre console, and for rear seat passengers, two more in the sedan's rear seat centre fold-away tray.

It's thoughtful engineering that begins with the Commodore Executive and extends across the model range.



## There's a big story in Commodore wagon.

The all new Commodore wagon creates new dimensions of space, handling and comfort.

The stronger body with new dynamic Independent Rear Suspension gives driving enjoyment normally only attainable in a sedan.

The cargo volume has been increased and, importantly, it is useable space. The floor allows flat objects up to 1.2 metres wide to slide between the wheel arches.

A built in roof rack track means the aerodynamic performance and smooth good looks of the Commodore wagon are maintained. Simply add roof bars and you have an integrated carrying system when you need it.

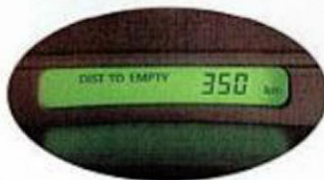
The rear wiper now matches the front wipers stroke for stroke when they are operating intermittently. But select reverse and the rear wipers reverts to normal speed to provide you with the clearest possible rear vision.

The all new Holden Commodore wagon. Whether it's the Executive, Acclaim or Berlina wagon, there's a big story to tell.



### Electric seat adjustment

Adjusting the driver's seat for the correct driving position can now be achieved with effortless fingertip control. The driver's electric seat adjustment controls both height and cushion tilt.



### Trip computer

The trip computer displays vital information for the driver, starting with the odometer and trip distance. Other useful functions include estimated trip distance to go and estimated trip time remaining, based on average driving speed. The distance to empty function constantly calculates how long the fuel will last and there is the speed alert that can be programmed to chime at each of four pre-selected speed limits.



### Driver's airbag

The driver's airbag, standard on all Commodores, was designed by Holden engineers specifically for Australian conditions. The airbag is deployed with a flatter surface, working in conjunction with the pyrotechnic front seat belt pre-tensioners to minimise the risk of injuries in an airbag-related collision.



**Cargo area**

The all new Holden Commodore wagon has the largest carrying capacity in its class. Commodore's new body design, with wider track and longer wheelbase, means the large cargo surface area gives more useable carrying volume. The Berlina wagon features a pull out cargo blind for added security.

**Seating configurations**

Commodore wagon offers a variety of seating and storage configurations. The 60:40 split folding second row seat means longer objects can still be carried with one or two rear seat passengers, while the Holden Plus 2 accessory seat provides a forward-facing, split 3rd row seat for two children up to 12 years old.



# The Holden Commodore Acclaim sets the benchmark in safety features.

No Australian built family car can match the standard range of safety features found on the new Commodore Acclaim.

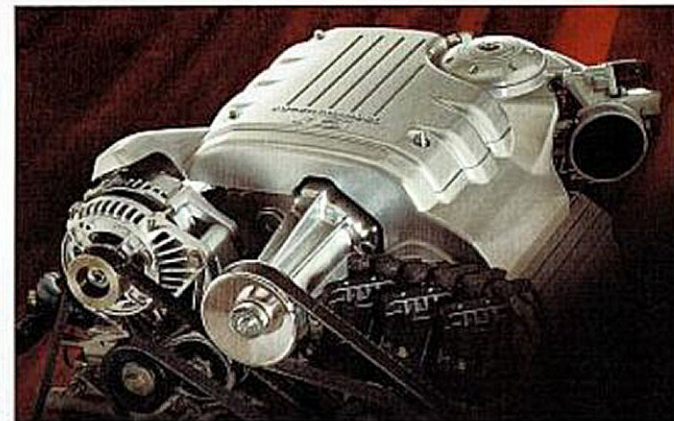
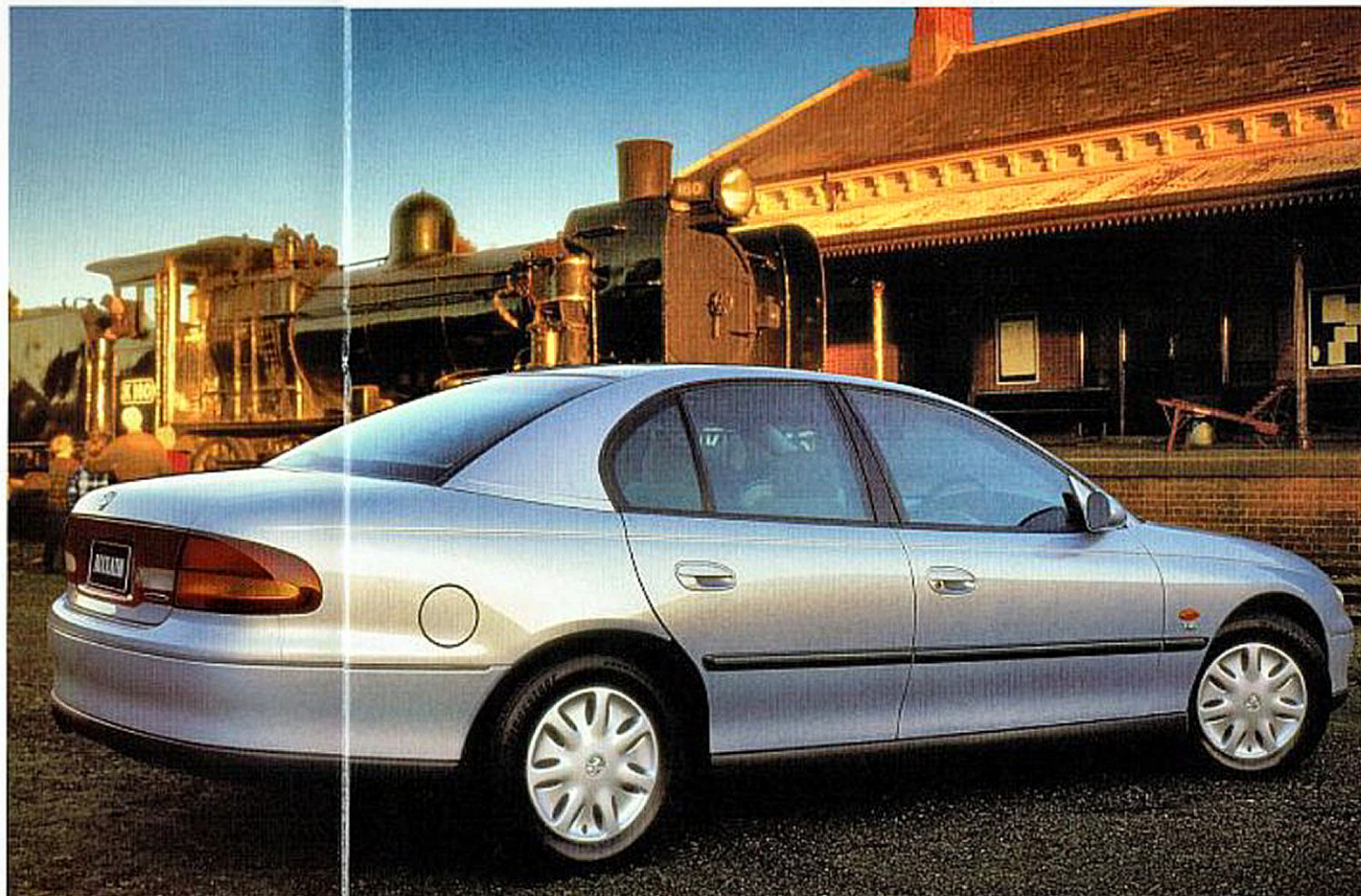
Now Traction Control (TC) joins the new Bosch 5.3 Anti-lock Braking System (ABS), the Supplemental Restraint System (SRS) and Independent Rear Suspension (IRS) to provide the best of Holden's leading active and passive safety technology.

When Traction Control is engaged, it automatically reduces engine power and, if required, applies braking pressure to a

spinning wheel to ensure smooth acceleration with maximum driver control under varying road conditions.

Cruise control is also standard equipment to assist with effortless driving on the open road, while optimising fuel economy.

The new Holden Commodore Acclaim. Feature for feature, it sets a new standard.



**Supercharged V6 engine**  
Both Commodore S and SS now offer the option of the powerful, yet efficient Supercharged V6 engine. This remarkable engine lets the Commodore S and SS driver enjoy the astounding performance gains of this elite technology, shared with Aston Martin, Jaguar and Mercedes-Benz. It now delivers 171kW of power and 375Nm of torque as the supercharger efficiently extracts peak power from premium unleaded petrol.

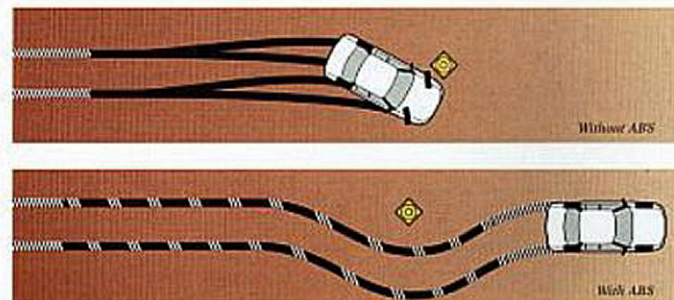
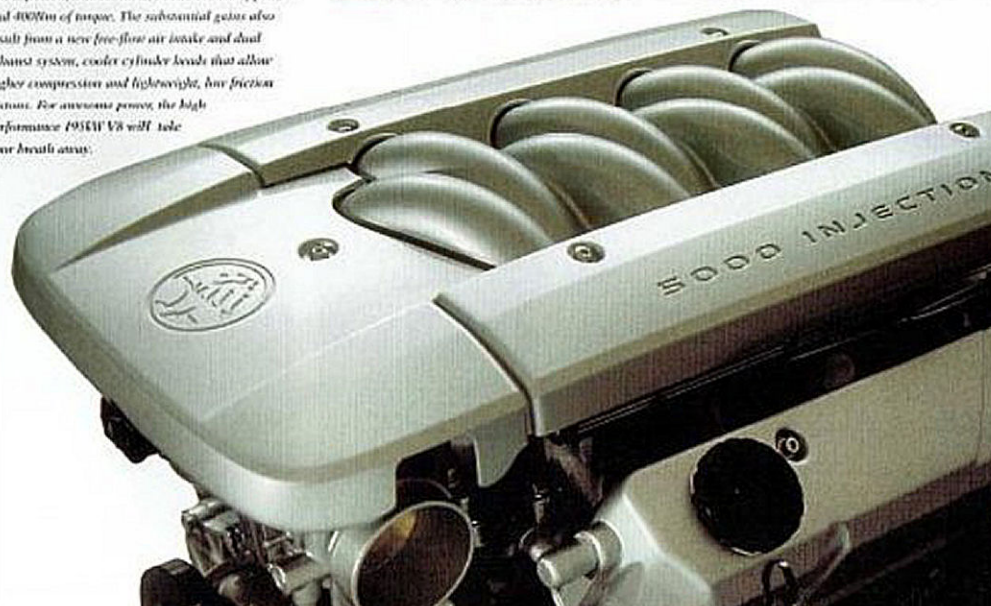
#### ECOTECH V6 engine

Holden's revolutionary ECOTECH V6 combines power with remarkable fuel efficiency, and with the latest Bosch fuel injection system, it is cleaner than ever. It delivers 147kW of power at 5,200 rpm and over 300Nm of torque at 3,600 rpm. Now fitted with a full length stainless steel, long life exhaust system that resists corrosion, the ECOTECH V6 just keeps getting better.



#### V8 engine

Holden's legendary 5 litre V8, now with sequential fuel injection, delivers no less than 179kW of power and 400Nm of torque. The substantial gains also result from a new free-flow air intake and dual exhaust system, cooler cylinder heads that allow higher compression and lightweight, low friction pistons. For awesome power, the high performance 195kW V8 will take your breath away.



**Bosch 5.3 Anti-lock Braking System**  
Anti-lock braking (ABS) assists in an emergency situation by helping to maintain steering control, even under full braking.



#### Traction Control

Traction Control (TC) brings new levels of smooth driving under slippery conditions. The Traction Control can be manually overridden by pressing the override button if required in driving situations such as 'rocking' the car free out of deep sand, or when using snow chains.



**Driver and front passenger airbags**  
The Commodore Acclaim features a driver and front passenger airbag system as standard equipment. These deploy simultaneously in milliseconds in conjunction with Commodore's front seat belt pre-tensioners. They also use 'wheeler' technology to prevent aggressive airbag injuries.

# Supercars- Commodore S and SS.

For the sporting driver Holden is proud to present the wild new Commodore S and SS. The Commodore S is powered by the ECOTEC V6, while the Commodore SS is equipped with the high output 5 litre V8, featuring new sequential fuel injection.

Both engines maximise performance with the acclaimed German Getrag 5 speed manual transmission for quicker, smoother gearshifts.

For the purists, there's the rare option of the sensational Supercharged V6 teamed up with an electronic 4 speed automatic transmission.

Both models put power to the bitumen through big sports alloy wheels.

#### SS seats

*Inside, the SS puts the driver and front passenger in the racing seat with high-winged sports seats trimmed in distinctively styled fabric. The sports interior is complemented with a leather bound steering wheel.*

The Commodore S features 16" x 7" rims with low profile 225/50 R16 tyres. The SS ups the ante again with huge 17" diameter by 8" wide wheels and meaty, super low profile P235/45 V rated tyres.

The distinctive deep front, side and rear body skirts and wing spoiler on the rear decklid will catch people's attention. And the performance will capture your imagination.





# Indulge yourself in the added benefits of Berlina.

Berlina has an added level of convenience and luxury that sets it apart.

There's electronic climate control that comfortably air conditions the entire cabin space to your selected temperature. Power operated front and rear windows are standard equipment.

Small touches also make a world of difference. Sumptuous levels of interior trim, front reading spot lamps and rear reading lamps, and a rear centre armrest. Berlina has a new hi-fi system to surround you with fine sound quality.

The variable intermittent mode on the windscreen wipers is road speed sensitive. So as you increase speed in the rain, the wipers clear it more frequently.

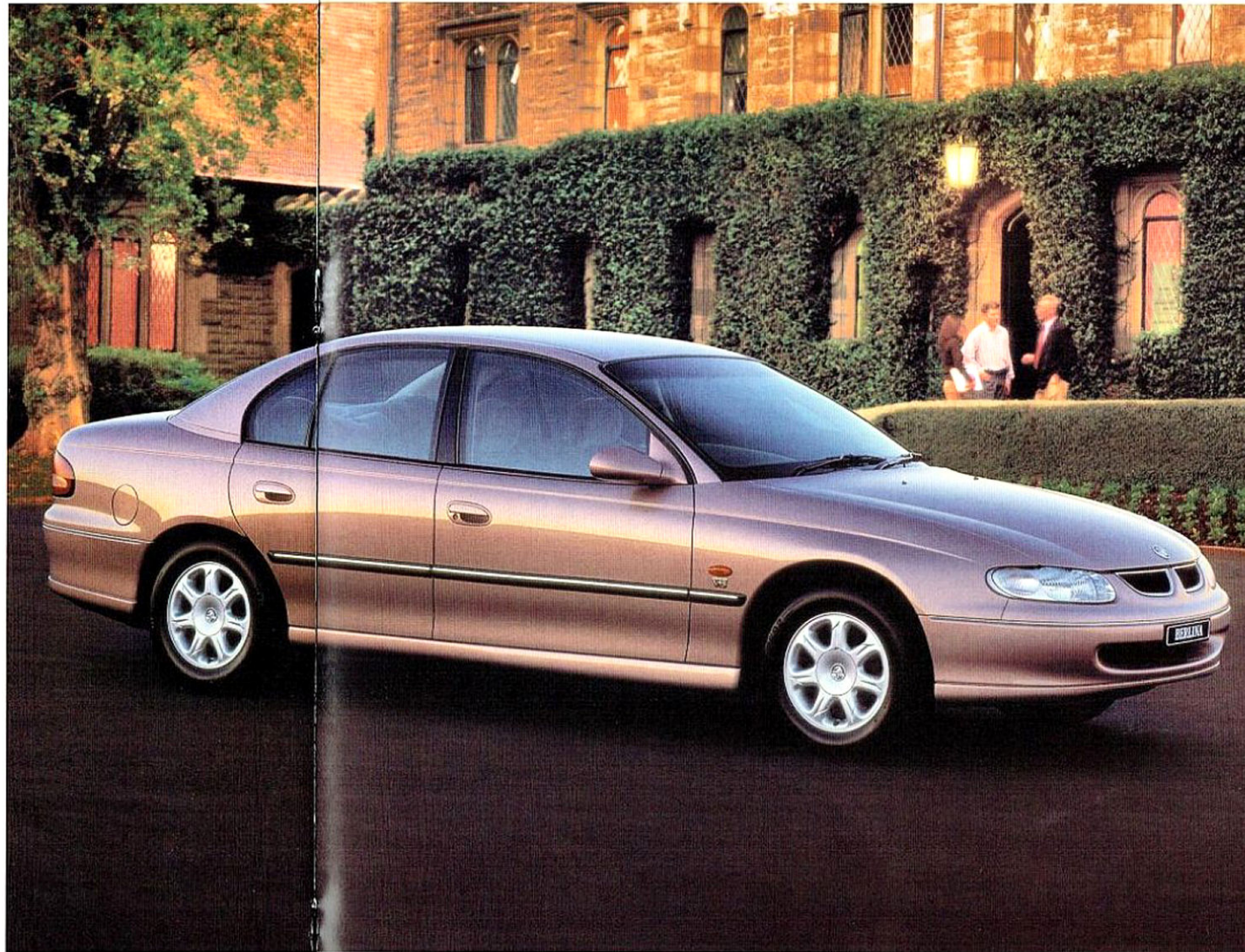
Even the headlamps employ 'smart'

technology. You can program them to stay on for a short period after you've left the vehicle, so you can light the way to the front door at night for added peace of mind.

The Berlina's trip computer now has more functions to give you all the answers. Like trip distance to go and estimated time to the end of your journey.

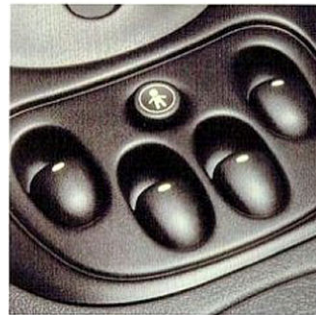
If your computer read out tells you that you may not have enough fuel to reach your destination, simply reduce speed and it will automatically recalculate. Smart thinking.

The all new Holden Berlina. Indulge yourself.



#### CD player

*Berlina's big 6 speaker sound system has a CD player and a tape deck in the dash as standard equipment. It will give you gentle background ambience or let you enjoy the most vibrant pieces with equal audio perfection.*



#### Power window control

*Power windows, standard equipment front and rear on Berlina, include an 'express down' driver's window. All windows stay powered right up to the moment you finally lock the car with your remote Power Key, and leave. The rear window controls feature a childsafe override button.*

# Spacious and smart.

Holden has designed the all new Commodore for improved safety, driving performance, practicality and comfort.

## Cup holders

Cup holders in the centre console carefully secure different sizes. There are also cup holders located in the rear seat centre fold-away tray.



One of the most sophisticated locking/security systems available includes Holden's remote control Power

## Traction control button

When Traction Control is fitted, the driver can choose to select or de-select it by simply pressing the button, depending on the road conditions and driving requirements.



Key with its inbuilt 'rolling' security code that changes continuously.

Removal of the Power Key from the ignition immobilises the vehicle.

And Commodore's immobiliser now

## Sound system

The double DIN sound system control panel features large controls for better ergonomics and easier operation. A single CD player is also standard in Berlina and available as an option on all other Commodore models.



has 16 million new codes ensuring no two cars will have the same key code.

One press of the button on the key unlocks only the driver's door to keep intruders out of the passenger doors.

## Climate control

The new electronic climate control is standard on Berlina. The liquid crystal display allows you to set your preferred cabin temperature, while twin rear air ducts carry a 30% improvement in airflow over the previous model to ensure all passengers enjoy a comfortable trip.



If the deadlocks have been engaged, they are now also automatically released during keyless entry. As further security against an attempted forced entry, the door and boot locks now 'freewheel'

## Trip computer

A trip computer is incorporated on all Commodore models. In addition to the standard 6 functions, Berlina's trip computer performs 6 additional functions to keep the driver constantly informed.



when any object other than the correct key is inserted.

Very smart. Very secure. That's the feeling you get with the all new Holden Commodore.

## Cruise control

Cruise control is optional on Executive and standard on all other models with automatic transmission. Long distance driving has never been more comfortable or economical.



# Personal style and function, backed by Holden.

Our customers' individual tastes and needs are important to Holden.

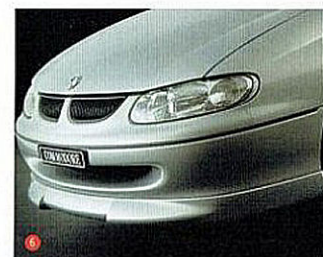
That's why Holden By Design offers exclusive, factory-backed enhancements, tailored to your new Commodore.

If you are looking for eye-catching appearance or equipment to get the job done, an extensive range of equipment is available when you place your new car order with a Holden Dealer.

The stunning 'iD Series' enhances the stylish new Commodore shape, with a sporting flavour that goes from mild to wild. But when it comes to the rigours of everyday life, the choice of practical necessities will make your driving day easier.

All Holden By Design enhancements are fitted in the factory environment. And for

total reassurance, they are covered by a factory-backed 3 year/100,000km warranty.\*



1 & 2. Sports-styled alloy wheels are available in 15 and 16 inch diameter, fitted with road-hugging tyres for optimum performance and great looks. Enhance the powerful image of your Commodore with these easily maintained wheels.

3. An integrated wing, aerodynamically designed for airflow efficiency, is securely mounted on the rear decklid. Decklid struts are upgraded to maintain ease of remote opening with the Power Key.

4. Open-air motoring is a breeze with the tailored sunroof, electrically controlled for preferred positioning in the slide or tilt mode. Ceiling-mounted fingertip controls are conveniently located while the sliding cover ensures privacy.

5. The specially engineered Holden LPG tank is located in the boot of Commodore sedans in a position that maximises luggage space. Rear suspension is upgraded to retain the high standard of ride and handling.<sup>†</sup>

6. A handsome front air dam helps Commodore cut cleanly through the air, by promoting flow over or around the smooth, efficient shape of the car.

7. Fully integrated into the new width of the Commodore wagon, the cargo barrier provides protection for occupants from items stacked in the rear cargo compartment.

\*Conditions Apply. See your Holden Dealer for details. †LPG is not available with Traction Control.

# The smartest way to own a new Commodore.

Holden & Holden Financial services offer you the most extensive range of options designed to assist you in owning a new Commodore more affordably.

## HOLDEN FINANCIAL SERVICES SMART CHOICES

Holden SmartBuy puts the keys to a new Commodore in your hand and keeps more dollars in your pocket.

the tax, maintenance and service advantages normally only enjoyed by large fleet buyers. Now that's smart!

Commodore fleet buyers enjoy access to HNL Fleet Services<sup>†</sup> which offer a wide range of fleet leasing, management



Low monthly repayments, with a choice of 1, 2 or 3 year terms, give you more affordable and flexible finance options. SmartBuy also has the extra advantage of a guaranteed minimum buyback price.

At the end of the agreement, you can hand back your Commodore, pay it out for the agreed value or refinance it. The choice is yours.\*

Freecall the SmartBuy Hotline for more details on 1800 642 000. For the annual percentage rate applicable see your local Holden Dealer. Small business Commodore buyers have the option of SmartDrive which can provide many of

and financial services to approved customers. Consult your Holden Dealer or HNL Fleet services direct, toll-free on 1800 226 772.



## THE GM CARD A GREAT DEAL MORE REWARDING

Simply by putting your everyday expenses like bills and shopping on your GM Visa or GM Mastercard, you'll be saving towards your next new Holden.<sup>‡</sup>

For every \$20 you spend on credit purchases Holden will put \$1 towards your next new Commodore. You can swipe thousands of dollars off the best price you can negotiate on a new Commodore.

The Rebate can be transferred to other eligible members of your family. So even if you're a fleet buyer you can save hundreds, even thousands off a second new car.

The GM Card offers no annual fee in the first year (a fee currently \$18, applies in subsequent years), and a competitive interest rate with up to 55 days interest free.<sup>‡</sup>

To apply, visit any Westpac/Challenge branch, Holden Dealer, or call The GM card 24 hour Customer Service Line on 131 200.

# The package wouldn't be complete without extra peace of mind.

## WE'RE WITH YOU ALL THE WAY

Your new Holden Commodore comes with the added peace of mind of the nationwide support of Holden and its Dealer network.

## 3 YEAR OR 100,000 KM NEW VEHICLE WARRANTY

Every Holden Commodore comes with a 3 year or 100,000 km New Vehicle Warranty, whichever comes first.



This factory backed bumper to bumper warranty covers everything from the engine, transmission, clutch, interior and exterior components including corrosion.

An Extended New Vehicle Warranty is also available.

## THE REASSURANCE OF 3 YEAR/24 HOUR HOLDEN ROADSIDE ASSISTANCE.\*\*

Peace of mind is also provided in the form of 3 year/24 hour Holden Roadside Assistance.

One of Australia's most comprehensive assistance packages it is complimentary for the full term of your new Holden Commodore warranty.

In the event of the unexpected happening, from your keys being locked in the car to mechanical and

accident advice, help is readily available by simple calling the toll-free number 1800 817 100.

This service is delivered from over 900 centres by Assist Australia and the combined resources of the Australian motoring organisation.

## EXTENSIVE NATIONAL DEALER SUPPORT

With over 350 dealers strategically located nationwide, the Holden service network is the largest in the country. Each Holden Service Centre is staffed

by a team of trained technicians who have access to regular factory training bringing them up to speed on the latest technology.

Should you require more information on any of our products contact our Customer Assistance centre on 1800 033 349 (Mon-Fri, 8am-6pm).



At HSV, through various aesthetic and engineering modifications, Commodores' world class design is enhanced to build some rather special vehicles, as their name suggests.

It's an organisation dedicated to producing, in very limited numbers, a range of Holdens with an indelible sporting character.



\*Fees and charges apply. Subject to credit approval and current terms and conditions. A disposal fee of \$350 applies plus charges for excess wear or excess kilometres may also apply.

†HNL Fleet Services is a registered business name of Holden National Leasing Ltd. A.C.N. 008 589 562.

‡Subject to The GM Card from Holden Program Rebate Rules. Vehicle sales for which a fleet allowance is paid are not eligible for GM Card Rebate. Full details of terms and conditions are available on request from your local Westpac branch. The interest rate as of July 1997 is 15.9% pa. Fees and charges may apply.

\*\*For full terms and conditions regarding Holden Roadside Assistance please refer to our customer booklet available from our Customer Assistance centre.

# YOUR COMMODORE IN DETAIL.

S = Standard Feature. O = Option. P = Option in package with one or more others. A = Accessory. H = Holders by Design.

	SEDANS				WAGONS			
	Exec	Accclaim	S	SS	Berlina	Exec	Accclaim	Berlina
<b>POWERTRAIN</b>								
3.8 litre ECOTEC V6 engine.	S	S	S		S	S	S	S
- Dual fuel, petrol/LPG. (Avail. with V6/auto trans combination. Not avail. with Traction Control.)	P				O			
171kW, 3.8 litre Supercharged V6 engine.			O					
179kW, 5 litre Sequential V8 engine.	O			S	O	O		O
195kW, 5 litre High Performance Sequential V8 engine.	O			O	O			
Multipoint fuel injection & engine management system.	S	S	S	S	S	S	S	S
5-speed Getrag manual transmission.	S	S	S	S	S	S	S	S
Electronic control 4-speed auto. Power or economy mode.	O	S	O	S	O	S	O	S
Oil-to-air cooler for towing to 1200kg without cooler accessory.	O	O	O	S	O	O	O	O
Limited slip differential.	O	O	O	S	O	O	O	O
75 litre long range fuel tank. Seamless, laminated plastic anti-rust-type for safety.	S	S	S	S	S	S	S	S
<b>MECHANICAL</b>								
Rack & pinion steering with power assist.	S	S	S	S	S	S	S	S
Independent Rear Suspension (IRS).	S	S	S	S	S	S	S	S
F2 Sports Suspension. (Inc. gas pressure rear shock absorbers.)	O	O	S	S	O	O	O	O
Four-wheel power disc brakes.	S	S	S	S	S	S	S	S
Anti-lock Braking system (ABS).	P	S	P	S	P	S	P	S
Traction Control (TC). Auto 'on', manual switch off control. (Option avail. with V6/auto trans combination.)	O	S	O	O	O	O	O	O
Engine hood gas strut assist.	S	S	S	S	S	S	S	S
On-board computer co-ordination of electronics, with self diagnosis.	S	S	S	S	S	S	S	S
Holden Dealer 'Tech 2' diagnosis of all major electronic control systems.	S	S	S	S	S	S	S	S
<b>WHEELS</b>								
Steel wheels, 15x6, with full covers & P205/65 R15 95H tyres.	S	S			S	S		
Alloy wheels, 15x6 & P205/65 R15 95H tyres.					S			S
Alloy wheels, 6 spoke, 15x6.5 & P205/65 R15 95H tyres.	O/A	O/A			O/A	O/A	O/A	O/A
Alloy wheels, 16x7 & P225/50 R16 95H tyres.			S					
Alloy wheels, 8 spoke, 16x8 & P225/50 ZR16 tyres.	H	H	H	H	H	H	H	H
Alloy wheels, 17x8 & P235/45 R17 95V tyres.				S				
Alloy wheels, 5 spoke, 17x8 & P235/45 ZR17 tyres.	H	H	H	H	H	H	H	H
<b>EXTERIOR</b>								
Grille charcoal.	S	S	S		S	S		
Sports graphite grille.				S				
Grille with chrome leading edge.					S			S
Bumpers in body colour.	S	S	S	S	S	S	S	S
Front, rear & side skirts.			S	S	H	H	H	H
Sports body kit: Front, rear & side skirts. Rear deck spoiler, wing type, with high-mount stop lamp.	H	H			H			
Foglamps, front.			S					
Headlamp guards.	A	A	A	A	A	A	A	A
Bonnet protector.	A	A	A	A	A	A	A	A
Radiator insect screen.	A	A	A	A	A	A	A	A
Country roof bar.	H/A	H/A	H/A	H/A	H/A	H/A	H/A	H/A
Mudflaps (flexible) front & rear.	A	A	A	A	A	A	A	A
Mudflaps (moulded) front & rear.	A	A			A	A		
Metallic paintwork.	O	O	O	O	S	O	O	S
Rocker panel below doorline in body colour.			S		S			S
Exterior mirrors in body colour.		S	S	S	S	S	S	S
Door handles in body colour.	S	S	S	S	S	S	S	S
Rear deck spoiler, wing type, with high-mount stop lamp.	H/A	H/A	S	S	H/A			
Tailgate dust deflector.					S	S		S
Chromed exhaust outlet.	A	A	A	S	S	A	A	S
Licence plate frames.	A	A	A	A	A	A	A	A
Full immersion body corrosion protection.	S	S	S	S	S	S	S	S
Full stainless steel long life exhaust system.	S	S	S	S	S	S	S	S
<b>DRIVER</b>								
Driver airbag (full size).	S	S	S	S	S	S	S	S
Front passenger airbag.	O	S	O	S	O	S	O	S
Four spoke soft feel steering wheel.	S	S			S	O	S	S
Four spoke leather wrap steering wheel.	H	H	S	S	H	H	H	H
Steering wheel height & reach adjust.	S	S	S	S	S	S	S	S
Illuminated ignition.	S	S	S	S	S	S	S	S
Remote boot release, electric.	S	S	S	S	S	S	S	S
Remote electric tailgate lock/unlock.					S	S		S
Remote fuel filler door release.	S	S	S	S	S	S	S	S
Remote control exterior mirrors, power.	S	S	S	S	S	S	S	S
Twin jet windshield washers & intermittent wipers.	S	S	S	S	S	S	S	S
- Variable intermittent, road speed sensitive wipers.				S				S
Tailgate window wiper/washer.					S	S		S
- Sweep timing synchronised with front wipers. (Berlina: when car is stationary.)					S	S		S

	SEDANS				WAGONS			
	Exec	Accclaim	S	SS	Berlina	Exec	Accclaim	Berlina
<b>SEATING</b>								
Seat trim in full cloth. Velour inserts.	S	S	S	S	S	S	S	S
Seat trim in full cloth, with sports design.			S					
Seat trim in woven velour.					S			S
Sheepskin bucket seat covers.	A	A	A	A	A	A	A	A
High rise centre console armrest.	S	S	S	S	S	S	S	S
Side support wings on front seat cushion.					S			S
Sports seats with high side support wings on bolster & seat back.	A	S	S	S	S	S	S	S
Front seat head restraints, padded.	S	S	S	S	S	S	S	S
- Height & fore/aft adjust.	S	S	S	S	S	S	S	S
Electric driver's seat height adjuster. Includes front & rear cushion tilt.	S	S	S	S	S	S	S	S
Driver's seat adjustable lumbar support.	S	S	S	S	S	S	S	S
Passenger seat adjustable lumbar support.	S	S	S	S	S	S	S	S
Driver's left footrest, adjustable.	S	S	S	S	S	S	S	S
Front lap/seat seat belts have webbing clamps & protective pre-tensioners. Lower belt mounts on seat structure for consistent fit when seat slid fore/aft.	S	S	S	S	S	S	S	S
Concealed front & rear window-seat belt slash guides protect the head with cover over belt anchor mechanism.	S	S	S	S	S	S	S	S
Anti-submarining ramps in all seats reduce risk of sliding under seat belt in a collision.	S	S	S	S	S	S	S	S
Rear centre seat lap/seat belt, retracting.	S	S	S	S	S	S	S	S
Folding 3rd row 'Plus 2' child seat.	A				A			A
Rear seat centre fold-away tray.	S	S	S	S	S	S	S	S
Rear seat centre armrest.					S			S
Rear seat head restraints. Height adjust.	S	S	S	S	S	S	S	S
Rear seat bolster head restraints.					S			S
<b>CHILDREN</b>								
Rear seat child restraint anchor points.	S	S	S	S	S	S	S	S
Childproof rear door locks.	P	O	O	O	S	P	O	O
Rear power window override switch.					P			P
<b>CABIN COMFORT</b>								
Air conditioning. Rear outlet vents.	O/A	O/A	S	S	O/A	O/A	S	S
- Electronic climate control. Auto/manual mode.					S			S

	SEDANS				WAGONS			
	Exec	Accclaim	S	SS	Berlina	Exec	Accclaim	Berlina
<b>STORAGE, CARGO, TOWING</b>								
Power windows, front & rear. Express down driver's window. Windows powered until car locked by remote Power Key.	P	O	O	O	S	P	O	S
Electric sunroof.	H	H	H	H	H	H	H	H
Power socket, cigarette lighter type.	S	S	S	S	S	S	S	S
Cigarette lighter & ashtray, front.	A	A	A	A	A	A	A	A
Cigarette lighter & ashtray, rear.	A	A	A	A	A	A	A	A
Vanity mirror, passenger side.	S	S	S	S	S	S	S	S
Centre dome lamp, time delay on entry.	S	S	S	S	S	S	S	S
- Auto off after 2 hours.					S			S
Footwell lamps front & rear.					S			S
Front reading spotlamps.					S			S
Rear reading lamps.					S			S
Cut pile carpet.	S	S	S	S	S	S	S	S
Rubber floor mats.	A	A	A	A	A	A	A	A
Carpeted floor mats, tailored, de luxe, front & rear.	A	A	A	A	A	A	A	A
Padded fabric in door trim.	S	S	S	S	S	S	S	S
Passenger overhead assist handles, folding, front & rear.	S	S	S	S	S	S	S	S
Aero windshield sunshade, front.	A	A	A	A	A	A	A	A
Weathershield, in standard width or slantline, driver & front passenger window.	A	A	A	A	A	A	A	A
Rear Sunpad.	A	A	A	A	A			A
<b>STORAGE, CARGO, TOWING</b>								
Twin cup holders in centre console.	S	S	S	S	S	S	S	S
Twin cup holders in rear seat centre fold-away tray.	S	S	S	S	S	S	S	S
Glovebox with lamp.	S	S	S	S	S	S	S	S
Centre console compartment with liner.	S	S	S	S	S	S	S	S
Front door storage bins, full length, carpeted.	S	S	S	S	S	S	S	S
Storage pocket rear of driver & passenger seat.	S	S	S	S	S	S	S	S
Fold-down rear centre hatch for long loads.	S	S	S	S	S			S
60/40 split fold rear seatback.						S	S	S
Cargo area storage locker for small items.						S	S	S
Cargo safety barrier.						H/A	H/A	H/A
Boot lid gas strut assist.	S	S	S	S	S			S
Tailgate gas strut assist.	S	S	S	S	S	S	S	S
Carpeted boot floor & spare wheel cover.	S	S	S	S	S	S	S	S
Carpeted cargo area.						S	S	S
Lamp in boot.	S	S	S	S	S	S	S	S
- Wagon cargo area.						S	S	S
Roof carry bars.	A	A	A	A	A			A
Aero style roof carry bars.						A	A	S
Towing equipment (see specifications).	A	A	A	A	A	A	A	A
Spigot shock absorbers.	A	A	A	A	A	A	A	A
<b>ROAD SAFETY</b>								
Emergency mode 10 seconds after seat belt pre-tensioner triggered. On-board computer turns engine & fuel pump off. Unlocks doors, harris dome lamp on.	S	S	S	S	S	S	S	S
Warning triangle for roadway.	A	A	A	A	A	A	A	A
First aid kit.	A	A	A	A	A	A	A	A
<b>SECURITY</b>								
Remote control Power Key, with rolling security code, operates dome lamp.	S	S	S	S	S	S	S	S
- Releases doorlocks.	S	S	S	S	S	S	S	S
- Operates central locking for keyless entry through driver's door only.	S	S	S	S	S	S	S	S
- Operates all doors when button kept pressed.	S	S	S	S	S	S	S	S
- Operates alarm system.	A	A	A	A	A	A	A	A
- Enables ignition.	S	S	S	S	S	S	S	S
- Opens boot.	S	S	S	S	S	S	S	S
- Unlocks/locks tailgate.						S	S	S
Indicators usable to flash confirmation if door is ajar when remote locking.	S	S	S	S	S	S	S	S
Flashing red interior warning lamp shows vehicle is protected.	S	S	S	S	S	S	S	S
Engine disabled to immobilise vehicle when key removed from ignition. Unique code for each vehicle.	S	S	S	S	S	S	S	S
Theft attempt memory, audible warning & location report, including after battery disconnection.	A	A	A	A	A	A	A	A
Key in driver's door engages door deadlocks.	S	S	S	S	S	S	S	S
Doorlock in driver's door only lock cylinder 'free-wheel' unless control key inserted, to defeat wrong key or 'forcing' with theft implement.	S	S	S	S	S	S	S	S
Slip-type Steering lock. If steering wheel is forced, front wheels will not turn.	S	S	S	S	S	S	S	S
Loc Label glowbox.	S	S	S	S	S	S	S	S
Retracting roller cargo blind.						A	A	S
Radio/cassette security electronics using PIN.	S	S	S	S	S	S	S	S
Headlamps auto off: programmable time delay.						S		S

# COMMODORE SPECIFICATIONS.

	ECOTEC V6	Super-charged V6	Sequential 179kW V8	195kW V8
ENGINE	"V" configuration, OHV design with cross-flow cylinder heads, 'hot wire' air mass metering. Sequential fuel injection. Engine management system. Computer diagnostics. Twin electric cooling fans. Stainless steel exhaust.			
	Linear exhaust gas recirculation for emissions & economy.	Cold air intake. High flow air cleaner. Low restriction dual exhaust.		
		Electronic control supercharger.		Extractor exhaust system.
	High energy distributorless, ignition & triple coils.	Breakerless high energy electronic ignition system.		
	Twin knock-control sensors.	Knock-control sensor.		
	Low friction technology.	Low friction technology.		
	Cross-bolted main bearings.			
BORE x STROKE (mm)	97 x 86		102 x 77	
CAPACITY (cc)	3791		4987	
COMPRESSION RATIO	9.4:1	8.5:1	8.8:1	
RECOMMENDED PETROL OCTANE	91 octane petrol (ULP)	95 (PULP) Altern: 91 (ULP)	91 octane petrol (ULP)	
POWER (DIN, kW)	147 @ 5200 rpm	171 @ 5200 rpm (PULP)	179 @ 4800 rpm	195 @ 5200 rpm
TORQUE (DIN, Nm)	304 @ 3600 rpm	375 @ 3000 rpm (PULP)	400 @ 3600 rpm	430 @ 3600 rpm
GEAR RATIOS (1)	Manual Getrag 3.83 2.19 1.40 0.81		Manual Getrag 3.55 2.04 1.40 0.76	
	4 speed auto 1st: 3.06 2nd: 1.63 3rd: 1.00 4th: 0.70			
DRIVE	Rear Ratio: 3.08:1			
PETROL ECONOMY (L/100 km*)	Exec.	S-Pack	SS	
Sedan	Manual: City: 11.0 (25.6 mpg) Hwy: 7.2 (39.2 mpg) Auto City: 12.0 (23.5 mpg) Hwy: 7.2 (39.2 mpg)	Auto (PULP) City: 11.5 (20.9 mpg) Hwy: 7.8 (36.2 mpg)	Auto City: 15.0 (18.8 mpg) Hwy: 9.0 (31.3 mpg)	
Wagon	Manual: City: 11.5 (24.5 mpg) Hwy: 7.4 (38.1 mpg) Auto: City: 12.5 (22.6 mpg) Hwy: 7.4 (38.1 mpg)		Auto: City: 15.0 (18.8 mpg) Hwy: 9.5 (29.7 mpg)	

	ECOTEC V6	Super-charged V6	Sequential 179kW V8	195kW V8
PETROL TANK (L)	75			
LPG TANK (L)	60			
BRAKES	Four wheel disc. Ventilated front disc & lined caliper. (Aval: see feature list). When wheel speed sensors & computer detect imminent lock-up, brake cylinder pressure is adjusted front & rear to prevent braking skid.			
Anti-lock Braking System (ABS)				
TRACTION CONTROL (TC)	(Aval: see feature list). Maximises available traction. When sensors detect imminent rear wheel spin, engine torque is reduced. If one wheel about to spin braking is applied to transfer torque to wheel with better traction.			
SUSPENSION	Front: MacPherson strut, incorporating wet sleeve shock absorbers. Direct acting stabiliser bar. Progressive rate coil springs. Rear: Independent Rear Suspension (IRS). Semi-trailing arm. Progressive rate mindblock coil springs. Stabiliser bar.			
SPORTS SUSPENSION	(Option. Aval: see feature list.) Front: Firmer spring rate. Revised stabiliser bar diameter. Reduced ride height. Rear: Firmer spring rate. Gas pressure shock absorbers. Wagon: Revised stabiliser bar diameter.			
STEERING	Variable ratio rack & pinion. Variable power assist.			
TRACK (mm)	Sedan & Wagon		Front 1569 Rear 1587	
TURN CIRCLE (kerb to kerb, m)	Sedan		11.0	
	Wagon		11.5	
WHEELBASE (mm)	Sedan		2788	
	Wagon		2938	
WHEELS & TYRES	Executive: 15 x 6.00 steel wheels & P205/65 R15 95H tyres.			
EXTERIOR DIMENSIONS (mm)	Length	Width	Height	
Executive Sedan	4884	1842	1450	
Wagon	5042	1847	1545	
INTERIOR DIMENSIONS (mm)	Leg	Shoulder	Head	Hip
Executive Front	1072	1518	Sedan 988 Wagon 1002	1516
Rear	992		Sedan 968 Wagon 1069	1516
CARGO VOLUME (L)	Sedan		475	
	Wagon		2683 (Rear seat folded down).	
WEIGHT (Est. kg)	Executive Sedan		1643	
	Wagon		1611	
TOWING	Holden approved 1200kg, 1600kg & 2100kg towing equipment is available. See your Holden Dealer for details. (Towing capacity subject to State laws.)			
SERVICE (l/m)	Free 1500 inspection, 10,000 then every 10,000. Holden Dealer 'Tech 2' computerised analysis available for engine management system. Maintenance-free, long-life, poly-vee alternator drive belt with automatic tensioner.			

## HOLDEN COMMODORE, CALAIS & UTE EXTERIOR COLOUR RANGE



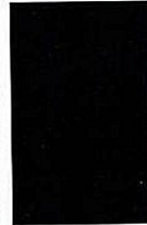
HOLDEN



ORION FROST\*



RAVEN MICA\*



CAPRICORN MICA\*



RUBENS MICA\*



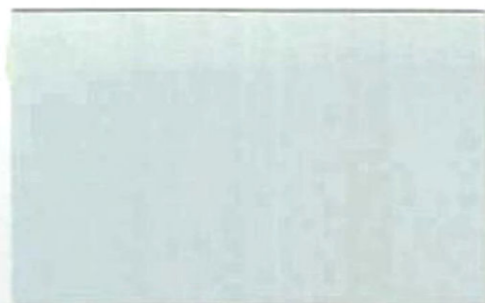
HERON

A word about this catalogue: We have tried to make this catalogue as comprehensive and factual as possible. However, since the time of printing some of the information you'll find here may have been updated. Also, some of the equipment shown or described through this catalogue may have been changed and/or is available at extra cost. And the right is reserved to make changes at any time without notice. In prices, colours, materials, equipment and models. Your Holden Dealer has details, and before ordering, you should ask them to bring you up to date. No Holden Dealer or other person is authorized or permitted to give or make any statement, assertion or undertaking in relation to the quality, performance characteristics, description or fitness for any purpose of any Holden product which is at variance with any written statement, assertion or undertaking on any of these subjects given or made by General Motors (Holden) Automotive Ltd. A.C.N. 006 891 232 or General Motors (Holden) Sales Pty Ltd. A.C.N. 004 668 811 in its published sales literature, and neither company accepts any liability for any such unauthorized action. General Motors (Holden) Automotive Ltd. and General Motors (Holden) Sales Pty Ltd. have franchised dealers in many parts of Australia for the sale of service parts, and the provision of service to owners of Holden's products. Every endeavour is made to ensure that such dealers carry adequate stocks of service parts, but neither General Motors (Holden) Automotive Ltd. nor General Motors (Holden) Sales Pty Ltd. makes any guarantee other than that contained in the New Vehicle Warranty given by General Motors (Holden) Automotive Ltd. Fuel consumption figures will be available at any specific location or at any particular time. Express warranties offered for Holden products are subject to the conditions set out in all vehicle handbooks. Details also available from Holden on request. \*Fuel consumption figures based on AUSTRIAN tests. These figures are provided to assist you in comparing the fuel consumption of Commodore with other vehicles. The actual fuel consumption will depend, however, on many factors, including your driving habits, the prevailing conditions and your vehicle's equipment, condition and use. Copyright General Motors (Holden) Automotive Limited. Printed by: Incolour Printing Pty. Ltd., 195 Chesterville Road, Moorabie, VIC. 3189. August 1997. GHD1048 AD10652

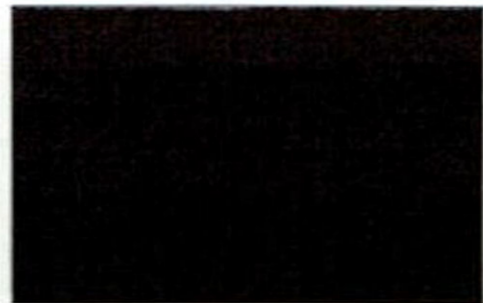
# HOLDEN COMMODORE, CALAIS & UTE EXTERIOR COLOUR RANGE



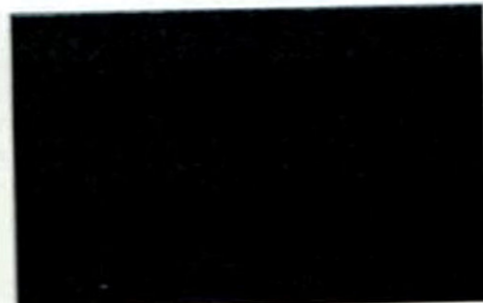
**HOLDEN**



HERON



RUBENS MICA\*



CAPRICORN MICA\*



RAVEN MICA\*



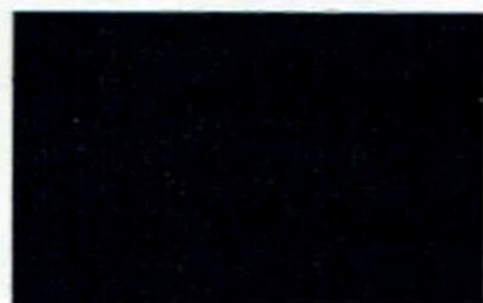
ORION FROST\*



VALENCIA MICA\*



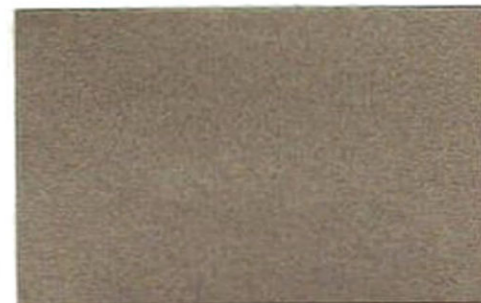
TUNDRA MICA\*



BOTANICA MICA\*



GRANADA MICA\*



MOROCCO SAND FROST\*



BERMUDA MICA\*

This colour chart illustrates the available exterior colours and interior trims of the Holden Commodore, Calais and Ute range of vehicles. As these are printed colours and not actual samples, variations between those illustrated and actual paint and fabric colours may occur. As such, we recommend that these illustrated colours be accepted as indicative only. Metallic and Mica paints may be an extra cost item and certain colours may not be available from time to time or on certain models. It is important that your Holden Sales Consultant confirms with you such variations by reference to the latest Holden Order Procedure. Availability of colours was correct at the time of printing, however, General Motors-Holden's Automotive Ltd. A.C.N. 006 893 232 reserve the right to make changes at any time and without notice.

\*NOTE: Mica and Frost colours are designed to vary the colour appearance as light is reflected through the surface clearcoat.

# HOLDEN COMMODORE, CALAIS & UTE INTERIOR COLOUR RANGE



**HOLDEN**



BOTANY TAUPE VELOUR



LEAF TAUPE VELOUR



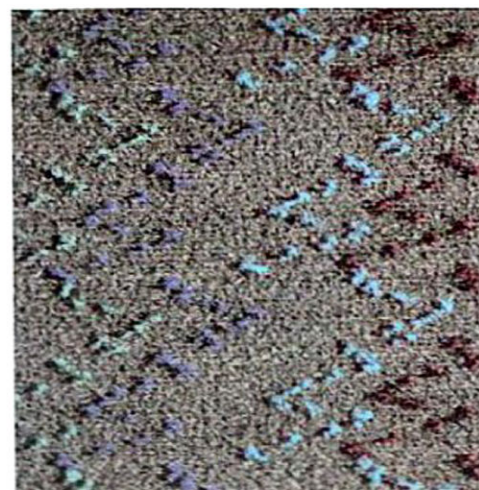
ZULU PEWTER CLOTH



ROMSEY TAUPE VELOUR



GENEVA TAUPE VELOUR



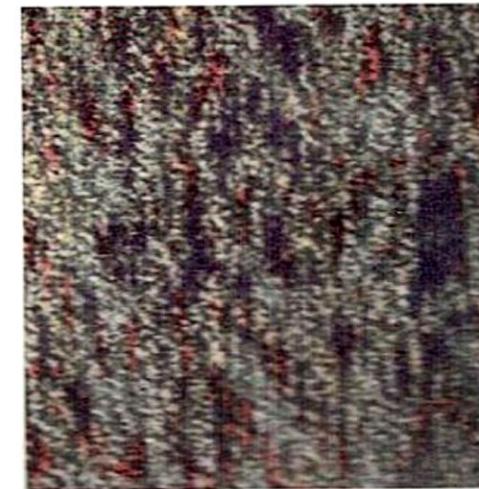
BOTANY PEWTER VELOUR



LEAF PEWTER VELOUR



ROMSEY PEWTER VELOUR



GENEVA PEWTER VELOUR





**HOLDEN**

*Official Automotive Partner*