

CHRYSLER



2013 | 200





200 Limited shown in Tungsten Metallic

RAISE YOUR STANDARDS. IT HAS BEEN BUILT WITH PROMISE AND WITHOUT COMPROMISE. IT BOASTS ONE OF THE MOST POWERFUL V6 ENGINES IN ITS CLASS.⁽¹⁾ THE DYNAMIC RIDE AND HANDLING, OUTSTANDING V6 FUEL ECONOMY, AND LUXURY CONTENT ADD PREMIUM COMFORT AND CONVENIENCE TO YOUR DAILY COMMUTE.

ITS ELEGANT DESIGN DISTRACTS FROM THE FACT THAT THIS IS CANADA'S MOST AFFORDABLE MID-SIZE SEDAN,⁽¹⁾ TASTEFULLY DELIVERED AND TRUE TO ITS PURPOSE OF OFFERING AFFORDABLE LUXURY. THE DIFFERENCE BETWEEN GOOD AND GREAT IS IN THE DETAILS. DISCOVER THE DETAILS WITH THE CHRYSLER 200 SEDAN.



200 S shown in Billet Metallic

PERFORMANCE ENGINEERED

The Chrysler 200 driving dynamics provide an optimum balance of ride, handling, and noise isolation. The front MacPherson struts and rear multilink coils allow individual articulation between front and rear wheels over varying road surfaces for a level ride. Large-diameter front and rear sway bars, stiffened body mounts, and soft ride rate all pave the way for a smooth and controlled response. The 200 S takes style and attitude to a new level. Adorned with a Black grille, Black headlamp treatment, Black front and rear fascia accents as well as 18-inch polished aluminum wheels with Black pockets, the 200 S is nothing short of street-chic.

POWERFULLY EFFICIENT

The available 3.6L Pentastar™ V6 with Variable Valve Timing (VVT) and Flex Fuel compatibility is paired with a six-speed automatic transmission with first-rate noise, vibration, and harshness (NVH) control. This award-winning engine provides an exceptional 283 horsepower, 260 lb-ft of torque, and impressive fuel economy of up to 6.8 L/100 km (42 mpg) highway.* The 2.4L I-4 16-valve engine when paired with the available six-speed automatic transmission with Auto/Stick™ features dual VVT and provides solid performance and fuel efficiency with 173 hp and up to 6.5 L/100 km (43 mpg) highway.*

283^{HP} | 6.8 L/100 KM^{HWY*}

*See page 9 for full details.



200 Limited shown in Light Frost

EVERYDAY INDULGENCE

High comfort, style, and technology merge harmoniously with premium seating, soft-touch surfaces, sound-absorbing treatments, and ambient LED lighting. The bolstered seats, available in either premium cloth or leather-faced, feature available eight-way power driver adjustments. The intuitively placed controls integrated into the available leather-wrapped steering wheel allow you to operate the radio, cruise controls, available voice command⁽²⁾ features, and other vehicle functions without having to change hand or eye placement. Illuminated cup holders and classic-design details supplement the innovative conveniences.

200 S. This model further indulges all your senses with unique leather-faced seating with suede inserts, Silver accent stitching, an embroidered "S" on the front seatbacks, a perforated leather-wrapped steering wheel, heated front seats, Uconnect™ 430 multimedia centre with a 6.5-inch touch screen, and six Boston Acoustics® speakers.

WELL-CONNECTED

Uconnect™ acts as the central hub for your most important media, allowing you to stay connected, informed, entertained, and focused on driving. Voice command⁽²⁾ allows you to use your voice to select AM/FM radio stations or SiriusXM™ Satellite Radio⁽³⁾ channels, as well as make/receive calls and select destination entries with the available navigation.⁽⁴⁾ You'll have multiple ways to access audio, including a USB port, iPod® control with voice command,⁽²⁾ Bluetooth® streaming audio, and SiriusXM Satellite Radio,⁽³⁾ which features song/artist alerts, game alerts, favourites, and replay (your first year of service is included). The available intuitive Garmin® navigation⁽⁴⁾ can locate nearby restaurants, shopping, hospitals, or points of local interest and provides easy-to-understand directions, including lane guidance. Top it all off with a system that is clever enough to synchronize with your phone's address book⁽⁵⁾ — up to 1000 entries — every time you get into your vehicle and you'll see how easy it is to keep in touch with the people, music, and devices that matter most.

SAFETY AND SECURITY IS STANDARD



We make safety and security a top priority, which is why every safety feature is standard. This abundance of safety and security features helped the 2012 200 Sedan earn a Top Safety Pick award by the Insurance Institute for Highway Safety.

ELECTRONIC STABILITY CONTROL (ESC)⁽⁶⁾ In adverse conditions, ESC and Brake Assist work with an all-speed traction control system to help maintain vehicle stability, limit oversteering or understeering, and automatically apply brake force when needed.

CRUMPLE ZONES. Specifically designed front and rear crumple zones help absorb energy and redirect it away from passengers, helping to reduce the risk of injury in the event of a collision.

AIR BAGS⁽⁷⁾ Advanced multistage driver and front-passenger, supplemental driver and front-passenger side-seat, as well as supplemental side-curtain air bags provide enhanced protection.

SENTRY KEY[®] ANTITHEFT ENGINE IMMOBILIZER. A unique security system code matched to your vehicle allows your 200 to start only with the special encoded key, helping to keep your vehicle where it belongs.

SECURITY ALARM. This system monitors the door-ajar and trunk switches as well as the ignition circuit for unauthorized entry. The lights flash and the horn sounds, alerting you if someone else is trying to enter your vehicle.



REACTIVE FRONT HEAD RESTRAINTS⁽⁸⁾ The front head restraints automatically move forward and upward in the event of a rear-end collision to decrease the space between the head restraint and the occupant's head, helping to reduce the chance of injury.

REMOTE KEYLESS/ILLUMINATED ENTRY. For additional convenience and security, this feature unlocks the driver's door on the first press of the key fob and all doors on the second press, illuminating interior lights once the vehicle is unlocked.

TIRE PRESSURE MONITORING SYSTEM. A warning lamp in the instrument cluster notifies you of any low tire pressure. The tire pressure monitoring display alerts you of individual tire pressure for all four tires and is part of the available Electronic Vehicle Information Centre.

ENHANCED ACCIDENT RESPONSE SYSTEM (EARS). This system makes it easier for emergency personnel to see and reach occupants in the event of an accident involving air bag⁽⁷⁾ deployment by turning on interior lighting, flashing hazard lamps, unlocking doors, and shutting off the flow of fuel to the engine once the vehicle has stopped.

EXTERIOR COLOURS All models not available in all colours.



GLOSS BLACK



BILLET METALLIC



BRIGHT WHITE



CASHMERE PEARL



CRYSTAL BLUE PEARL



DEEP AUBURN PEARL



DEEP CHERRY RED CRYSTAL PEARL



TRUE BLUE PEARL



TUNGSTEN METALLIC

SPECIFICATIONS¹

Weight		
Curb Weight, 2.4L I-4 Engine, kg (lb)	1544 (3403)	
Curb Weight, 3.6L V6 Engine, kg (lb)	1622 (3576)	
Gross Vehicle Weight Rating (GVWR), kg (lb)	2087 (4600)	
Towing (when properly equipped)		
Towing Capacity, max, kg (lb)	454 (1000)	
Exterior		
Wheelbase	2765 (108.9)	
Overall Height	1482 (58.4)	
Front Track	1567 (61.7)	
Rear Track	1594 (62.7)	
Overall Width	1843 (72.5)	
Overall Width with Side Mirrors	2121 (83.5)	
Overall Length	4870 (191.7)	
Ground Clearance	142 (5.6)	
Interior		
	Front	Rear
Headroom	1017 (40.1)	975 (38.4)
Headroom with Sunroof	963 (37.9)	975 (38.4)
Legroom	1077 (42.4)	919 (36.2)
Hip Room	1336 (52.6)	1341 (52.8)
Shoulder Room	1431 (56.3)	1421 (56.0)
Capacities		
Cargo, Rear Seat Up, L (cu ft)	385 (13.6)	
Seating Capacity	5	
Volume Index, L (cu ft)	3225 (113.9)	
Fuel Tank Capacity, L (gal)	64 (14.1)	

¹All dimensions are in millimetres (inches) unless otherwise noted.

POWER & FUEL ECONOMY

Based on 2013 EnerGuide fuel consumption ratings. Government of Canada test methods used. Your actual fuel consumption will vary based on driving habits and other factors. Ask your retailer for EnerGuide information.

Engine	Transmission	Horsepower	Torque (lb-ft)	L/100 km (mpg)	
				City	Highway
2.4L I-4	4-speed automatic	173	166	10 (28)	6.9 (41)
2.4L I-4	6-speed automatic	173	166	10.6 (27)	6.5 (43)*
3.6L VVT V6	6-speed automatic	283	260	11.0 (26)	6.8 (42)*

*As described on page 5.

PACKAGE DETAILS

- "S" Appearance Package**
- 18-inch polished aluminum wheels with Black pockets
 - P225/50R18 Goodyear[®] tires
 - Black grille
 - Black Chrysler wing inlay
 - "S" badging on rear deck lid
 - Black headlamp treatment
 - Black fog lamp bezels
- Sun & Nav Package**
- Power Sunroof
 - Uconnect 430N Multimedia Centre
- Sun & Nav II Package**
- Power Sunroof
 - Uconnect 730N Multimedia Centre
- Uconnect Hands-Free Communication⁽²⁾ with Bluetooth[®]**
- Hands-free communication with voice command⁽²⁾
 - Auto-dimming rearview mirror with microphone
 - Bluetooth streaming audio
 - Remote USB port

MULTIMEDIA CENTRES

- UCONNECT 130**
- CD/MP3/AM/FM
 - Auxiliary input jack
- UCONNECT 430**
- Uconnect 130 plus:**
- 6.5-inch touch screen
 - 28GB hard drive
 - DVD format capability
 - USB port on radio
- UCONNECT 430N**
- Uconnect 430 plus:**
- Garmin[®] Navigation⁽⁴⁾
 - SiriusXM[™] Satellite Radio⁽⁵⁾ with one-year subscription and SiriusXM Replay
- UCONNECT 730N**
- Uconnect 430N plus:**
- Enhanced Navigation⁽⁴⁾ with dead reckoning, split screen, and voice command⁽²⁾
 - 20GB hard drive (vs. 28GB)
 - Uconnect with voice command⁽²⁾ of phone, radio, and music
 - Bluetooth streaming audio
 - Remote USB port
 - iPod[®] connectivity
 - iPod/USB playback with radio controls

CHRYSLER 200 FEATURES AND OPTIONS



LX



Cloth – Black



Cloth – Light Frost



POWERTRAIN

- 2.4L DOHC 16V I-4 with 4-speed automatic (24H)
- 2.4L DOHC 16V I-4 with 6-speed automatic (29H)

INTERIOR AMENITIES

- Premium cloth seats
- Driver's height-adjustable seat
- Manual driver's lumbar adjuster
- 60/40 split-folding rear seat with trunk pass-through
- Uconnect™ 130 with four speakers
- Two 12-volt power outlets
- Auxiliary input jack
- Steering wheel-mounted audio controls
- Tilt/telescopic steering column
- Cruise control
- Instrument cluster with LED lighting
- Analogue clock
- Luxury front and rear floor mats
- Floor console with fore/aft slide armrest
- Instrument panel storage bin
- Leather-wrapped shift knob
- Laminated windshield and front-door glass
- Front and rear solar-control glass, tinted
- Air conditioning and air filtering
- Outside temperature display
- Rear armrest with cup holders
- Sun visors with mirrors

SAFETY & SECURITY

- Advanced multistage front air bags⁽⁷⁾
- Supplemental front-seat side air bags
- Supplemental side-curtain air bags
- Reactive front head restraints⁽⁸⁾
- Four-wheel disc antilock brakes
- Child seat anchor system (LATCH)
- Electronic Stability Control⁽⁹⁾ with Traction Control
- Engine block heater
- Sentry Key[®] anti-theft engine immobilizer
- Tire pressure monitoring warning lamp
- Keyless entry and security alarm

EXTERIOR FEATURES

- 17-inch wheels with covers
- P225/55R17 BSW all-season touring tires
- Touring suspension
- Compact spare tire
- Power windows, driver one-touch down
- Body-colour fascia and door handles
- Dark Argent grille with bright accents
- Bi-function halogen projector headlamps
- LED taillamps
- Body-colour, power, heated mirrors, manual folding
- Power locks
- 200 badge

OPTIONS

- Body-colour bodyside moulding
- SiriusXM™ Satellite Radio⁽³⁾ with one-year subscription
- Front-passenger forward fold-flat seat
- Uconnect Hands-Free Communication⁽²⁾ with Bluetooth[®]
- 17-inch aluminum wheels (see standard wheel on Touring)



TOURING



Standard
(See LX for cloth options.)



Optional

POWERTRAIN

- 2.4L DOHC 16V I-4 with 4-speed automatic (24U)
- 2.4L DOHC 16V I-4 with 6-speed automatic (29U)
- 3.6L Pentastar™ Variable Valve Timing (VVT) V6 with 6-speed automatic (27U)

DIFFERENCES/UPGRADES VS. LX

- 17-inch aluminum wheels
- Remote start system
- Heated front seats
- Eight-way power driver's seat
- Automatic temperature control
- Front and rear aimable LED lamps
- Premium fog lamps
- Automatic headlamps
- Tire pressure monitoring display
- Leather-wrapped steering wheel
- SiriusXM Satellite Radio⁽³⁾ with one-year subscription
- Traveller/mini trip computer
- Six speakers
- Rear assist handles
- Temperature and compass gauge

OPTIONS

- Power Sunroof
- "S" Appearance Package
- Body-colour bodyside moulding
- Uconnect 430 Multimedia Centre
- Uconnect 430N Multimedia Centre
- Uconnect 730N Multimedia Centre
- Uconnect Hands-Free Communication⁽²⁾ with Bluetooth
- 18-inch aluminum wheels (shown above on right)
- 18-inch polished aluminum wheels (shown under Limited)
- Sun & Sound Package
- Sun & Nav Package
- Sun & Nav II Package



LIMITED



Leather-faced – Black



Leather-faced – Light Frost
(See LX for available cloth options.)



POWERTRAIN

- 2.4L DOHC 16V I-4 with 6-speed automatic (29V)
- 3.6L Pentastar™ Variable Valve Timing (VVT) V6 with 6-speed automatic (27V)

DIFFERENCES/UPGRADES VS. TOURING

- 18-inch polished aluminum wheels
- Premium leather-faced seats
- Auto-dimming rearview mirror with microphone
- Bright door handles
- Chrome exterior mirrors
- Uconnect™ hands-free communication⁽²⁾ with Bluetooth[®]
- Power front windows with one-touch up/down
- Universal garage door opener⁽⁵⁾

OPTIONS

- Premium cloth seats
- Power Sunroof
- Six Boston Acoustics[®] speakers
- Uconnect 430 Multimedia Centre
- Uconnect 430N Multimedia Centre
- Uconnect 730N Multimedia Centre
- Sun & Sound Package
- Sun & Nav Package
- Sun & Nav II Package



S



Leather-faced – Black with perforated suede inserts and Silver accent stitching



POWERTRAIN

- 3.6L Pentastar™ VVT V6 with 6-speed automatic (27S)

DIFFERENCES/UPGRADES VS. LIMITED

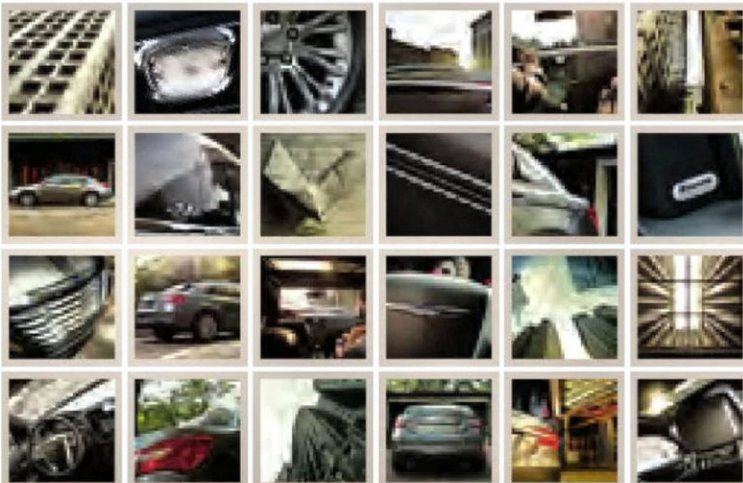
- 18-inch polished aluminum wheels with Black pockets
- Dual chrome exhaust tips
- Leather-faced seats with suede inserts
- Perforated leather-wrapped steering wheel
- Black chrome grille
- Black headlamp and fog lamp surrounds
- Body-colour exterior mirrors and door handles
- Uconnect 430 multimedia centre
- Six Boston Acoustics speakers
- Unique "S" wing badge
- "S" badge
- 160-amp alternator
- Engine oil cooler

OPTIONS

- Power Sunroof
- Uconnect 430N Multimedia Centre
- Uconnect 730N Multimedia Centre
- Sun & Nav Package
- Sun & Nav II Package

CHRYSLER

1-800-361-3700 | CHRYSLER.CA



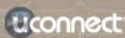
WARRANTIES 2013 Chrysler, Jeep, Dodge, and Ram vehicles are backed by a 5-year or 100,000-kilometre* fully transferable Powertrain Limited Warranty with \$0 deductible plus 24-hour roadside assistance. SRT® vehicles are backed by a 3-year or 60,000-kilometre* fully transferable Powertrain Limited Warranty with \$0 deductible plus 24-hour roadside assistance. Basic Warranty coverage is for 3 years or 60,000 kilometres. Rust-through coverage on all body sheet metal is for 3 years. The Cummins® Turbo Diesel engine is protected by a separate Limited Warranty, covering the engine for 5 years or 160,000 kilometres.*

AUTHENTIC CHRYSLER ACCESSORIES BY MOPAR, are designed specifically for your Chrysler vehicle for exceptional fit, finish, and performance. Visit your retailer or mopar.ca

SIRIUSXM™ SATELLITE RADIO SiriusXM Satellite Radio delivers over 130 channels, including 100% commercial-free music, sports, news, talk, and entertainment. Factory-installed SiriusXM Satellite Radio includes a one-year subscription. For more information, go to siriusxm.ca

CHRYSLER SERVICE CONTRACTS Chrysler Canada Inc. has a vested interest in your satisfaction and owner experience with your new vehicle. Chrysler Canada Service Contracts offer extended service and maintenance plans to help ensure you'll enjoy your vehicle for many years down the road — for just pennies a day. For more information on comprehensive vehicle coverage, see your local Chrysler, Jeep, Dodge, and Ram Retailer, call 1-800-465-2001, or visit chryslercanada.ca/owners

*Whichever comes first. Some conditions may apply. The 5-year/100,000-kilometre Powertrain Limited Warranty does not apply to vehicles sold for certain commercial uses. See your retailer for full details.



ABOUT THIS CATALOGUE. Since the time of printing, some of the information you'll find in this catalogue may have been updated. Ask your retailer for details. Some of the equipment shown or described throughout this catalogue is available at extra cost. Specifications, descriptions, illustrative materials, and all competitive comparisons contained herein are as accurate as known at the time this publication was approved for printing. Chrysler Canada Inc. reserves the right to make changes at any time without notice and without incurring obligation. For the price of the model with the equipment you desire, or verification of specifications contained herein, see your Chrysler, Jeep, Dodge, Ram, and SRT Retailer. Chrysler, the Chrysler wing design, 200, Jeep, Dodge, Ram, SRT, Mopar, and Sentry Key are registered trademarks and Uconnect and Pentastar are trademarks of Chrysler Group LLC. ©2012 Chrysler Canada Inc. All rights reserved. AutoStick is a trademark of Hurst Performance. Bluetooth is a registered trademark of Bluetooth SIG, Inc. Boston Acoustics and the Boston Acoustics logo are registered trademarks of Boston Acoustics, Inc. All rights reserved. Garmin and the Garmin logo are registered trademarks of Garmin, Ltd. or its subsidiaries and are registered in one or more countries. All rights reserved. Goodyear is a registered trademark of The Goodyear Tire & Rubber Company. iPod is a registered trademark of Apple Inc. All rights reserved. Sirius, XM, the SiriusXM logo, channel names, and logos are trademarks of SiriusXM Radio Inc. and are used under license. Cummins is a registered trademark of Cummins, Inc. All other trademarks, images, and logos are property of their respective owners and are displayed in this publication with permission. All rights reserved.

DISCLAIMERS: ¹Based on 2012 Ward's Upper Middle Sedan segmentation. ²Driving while distracted can result in loss of vehicle control. Only use mobile phones and other devices, even with voice commands, when it is safe to do so. Voice commands of phone require a Bluetooth-compatible phone. ³Requires SiriusXM™ Radio subscriptions governed by SIRIUS terms and conditions available at siriusxm.ca. ⁴Never program while driving. GPS mapping may not be detailed in all areas or reflect current road regulations. ⁵Phone must support Bluetooth Phone Book Access Profile (PBAP). ⁶No system can repeal the laws of physics or overcome careless driving actions. Performance is limited by available traction, which snow, ice, and other conditions can affect. When the warning lamp flashes, the driver needs to ease throttle and adjust speed and driving behaviour to prevailing road conditions. ⁷The advanced front air bags in this vehicle are certified to the federal regulations for advanced air bags. Children 12 years old and younger should always ride buckled up in a rear seat. Infants in rear-facing child restraints should never ride in the front seat of a vehicle with a passenger front air bag. All occupants should always wear their lap and shoulder belts properly. ⁸Always sit properly with the head restraint properly adjusted. Never place anything in front of the head restraint. ⁹Not compatible with all garage door openers.

CHRYSLER IS A REGISTERED TRADEMARK OF CHRYSLER GROUP LLC

52013CS80E