


CHRYSLER



2013 | 200 CONVERTIBLE



A silver Chrysler 200 S Convertible is shown from a front-quarter perspective, driving on a cobblestone street. The car is in motion, with a driver visible through the windshield. The scene is set in an urban environment with brick buildings and a sidewalk. The lighting is bright, casting long shadows on the cobblestones.

THE BEST OF BOTH WORLDS. IT'S ABOUT APPRECIATING VALUE AND HAVING CHOICES. LIKE TWO DIFFERENT POWER CONVERTIBLE TOPS TO FIT YOUR LIFESTYLE. A CLASSIC POWER CLOTH SOFT TOP EASILY FOLDS INTO THE TRUNK MAKING IT SIMPLE TO ENJOY OPEN-AIR DRIVING, WHILE AN AVAILABLE RETRACTABLE STEEL HARD TOP ADDS THE PRACTICALITY OF A CONVENTIONAL SEDAN. WITH PREMIUM INTERIOR FEATURES, AN AVAILABLE AWARD-WINNING V6 ENGINE, AND BEST-IN-CLASS⁽¹⁾ CARGO CAPACITY, IT'S THE FREEDOM OF CHOICE AND POWER THAT COMES STANDARD ON THE CHRYSLER 200 CONVERTIBLE.

Bold personality. Chrysler 200 S takes style and attitude to a new level with dual bright exhaust tips, Black grille, Black headlamp treatment, and projector fog lamps. The Black painted rear fascia insert, Black 'S' badge, and 18-inch polished aluminum wheels with Black painted pockets complete the exterior treatment. But the beauty of the 200 S runs more than skin deep with premium leather-faced seats with suede inserts and Silver accent stitching, perforated leather-wrapped steering wheel, heated front seats, and more.

200 S Convertible shown in Billet Metallic



200 Limited Convertible shown in Gloss Black

SMOOTH RESILIENCE

Engineered for exceptional performance, the Chrysler 200 Convertible provides an optimum balance of ride, handling, and noise isolation. The front MacPherson struts and rear multilink coils which allow individual articulation between front and rear wheels have been enhanced for 2013 to provide a smoother, more level, ride. Large-diameter front and rear sway bars, stiffened body mounts, and soft ride rate all pave the way for a controlled, precise response. These drivetrain and suspension enhancements also contribute to the reduction of noise, vibration, and harshness (NVH), while the premium 17-inch or available 18-inch wheels and tires provide solid balance and response.

POWERFULLY EFFICIENT

The available 3.6L Pentastar™ Flex Fuel Variable Valve Timing (VVT) 24-valve V6 engine is paired with a six-speed automatic transmission with first-rate noise, vibration, and harshness (NVH) control. This award-winning engine provides an exceptional 283 horsepower, 260 lb-ft of torque, and impressive fuel economy of up to 6.8 L/100 km (42 mpg) highway.* The 2.4L I-4 16-valve engine features dual VVT and a standard four-speed automatic transmission, which provides solid performance and fuel efficiency with 173 hp and up to 6.9 L/100 km (41 mpg) highway.*

283^{HP} | 6.8 L/100 KM HWY.*

*See page 9 for full details.



200 Limited Convertible in Leather-faced Pearl

EVERYDAY INDULGENCE

High comfort, style, and technology merge harmoniously with premium seating, soft-touch surfaces, sound-absorbing treatments, and ambient LED lighting. The bolstered seats, available in either premium cloth or leather-faced, feature available six-way power driver and front-passenger adjustments. With seating for four and Best-in-Class⁽¹⁾ rear-seat legroom, there's ample space to share the life of leisure, and with Best-in-Class⁽¹⁾ cargo space, extra bags are welcome. The intuitively placed controls integrated into the available leather-wrapped steering wheel allow you to operate the radio, cruise control, and voice command⁽²⁾ features, as well as other vehicle functions, without having to change hand or eye placement. Illuminated cup holders and classic-design details supplement the innovative conveniences.

WELL-CONNECTED

Uconnect™ acts as the central hub for your most important media, allowing you to stay connected, informed, entertained, and focused on driving. Voice command⁽²⁾ allows you to use your voice to select AM/FM radio stations and SiriusXM™ Satellite Radio⁽³⁾ channels, as well as make/receive calls and select destination entries with the available navigation.⁽⁴⁾ You'll have multiple ways to access audio, including a USB port, iPod® control with voice command⁽²⁾, Bluetooth® streaming audio, and SiriusXM Satellite Radio⁽³⁾, which features song/artist alerts, game alerts, favourites, and replay (your first year of service is included). The available intuitive Garmin® navigation⁽⁴⁾ can locate nearby restaurants, shopping, hospitals, or points of local interest, and provides easy-to-understand directions, including lane guidance. Top it all off with a system that is clever enough to synchronize with your phone's address book⁽⁵⁾ — up to 1000 entries — every time you get into your vehicle and you'll see how easy it is to keep in touch with the people, music, and devices that matter most.

SAFETY AND SECURITY.

CRUMPLE ZONES.

Specifically designed front and rear crumple zones help absorb energy and redirect it away from passengers, helping to reduce the risk of injury in the event of a collision.

REACTIVE FRONT HEAD RESTRAINTS⁽⁶⁾

Head restraints automatically move forward and upward in the event of a rear-end collision to decrease the space between the head restraint and the occupant's head, helping to reduce the chance of injury.

AIR BAGS⁽⁷⁾

Advanced multistage driver and front-passenger air bags, and supplemental driver and front-passenger side-seat air bags are standard.

SECURITY ALARM.

This system monitors the door-ajar and trunk switches, as well as the ignition circuit, for unauthorized entry. The lights flash and the horn sounds, alerting you if someone else is trying to enter your vehicle.

SENTRY KEY[®] ANTI-THEFT ENGINE IMMOBILIZER.

A unique security system code matched to your vehicle allows your 200 to start only with the special encoded key.



ELECTRONIC STABILITY CONTROL (ESC)⁽⁸⁾

In adverse conditions, ESC and Brake Assist work with an all-speed traction control system to help maintain vehicle stability, limit oversteering or understeering, and automatically apply brake force when needed.

REMOTE KEYLESS / ILLUMINATED ENTRY.

For additional convenience and security, this feature unlocks the driver's door on the first press of the key fob and all doors on the second press, illuminating interior lights once the vehicle is unlocked.

TIRE PRESSURE MONITORING SYSTEM.

A warning lamp in the instrument cluster notifies you of low tire pressure. A Tire Pressure Monitoring Display alerts you of individual tire pressure and is part of the available Electronic Vehicle Information Centre (EVIC).

ENHANCED ACCIDENT RESPONSE SYSTEM (EARS).

In the event of air bag deployment, the EARS will cut off fuel to the engine, unlock the doors, flash the hazard lamps, and turn on the interior lights to make the vehicle more visible and accessible to emergency personnel.

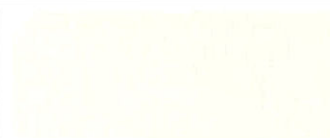
EXTERIOR COLOURS All models not available in all colours.



GLOSS BLACK



BILLET METALLIC



BRIGHT WHITE



CASHMERE PEARL



CRYSTAL BLUE PEARL



DEEP AUBURN PEARL



DEEP CHERRY RED CRYSTAL PEARL



TRUE BLUE PEARL



TUNGSTEN METALLIC

SPECIFICATIONS*

Weight		
Curb Weight 2.4L I-4 Engine, kg (lb)	1768 (3898)	
Curb Weight 3.6L V6 Engine, kg (lb)	1814 (4000)	
Gross Vehicle Weight Rating (GVWR), kg (lb)	2223 (4900)	
Towing (when properly equipped)		
Towing Capacity, max, kg (lb)	454 (1000)	
Exterior		
Wheelbase	2765 (108.9)	
Overall Height with Soft Top	1470 (57.9)	
Overall Height with Hard Top	1469 (57.8)	
Front Track	1567 (61.7)	
Rear Track	1594 (62.7)	
Overall Width	1843 (72.5)	
Overall Width with Side Mirrors	2089 (82.3)	
Overall Length	4947 (194.8)	
Ground Clearance	142 (5.6)	
Interior		
	Front	Rear
Headroom with Soft Top	984 (38.7)	939 (37.0)
Headroom with Hard Top	992 (39.0)	921 (36.3)
Legroom	1077 (42.4)	850 (33.5)
Hip Room	1339 (52.7)	1123 (44.2)
Shoulder Room	1432 (56.4)	1197 (47.1)
Capacities		
Cargo, Top Up, L (cu ft)	377 (13.3)	
Cargo, Top Down, L (cu ft)	198 (7.0)	
Seating Capacity	4	
Volume Index, L (cu ft)	2879 (101.7)	
Fuel Tank Capacity, L (gal)	64 (14.1)	

*All dimensions are in millimetres (inches) unless otherwise noted.

POWER & FUEL ECONOMY

Based on 2013 EnerGuide fuel consumption ratings. Government of Canada test methods used. Your actual fuel consumption will vary based on driving habits and other factors. Ask your retailer for EnerGuide information.

Engine	Transmission	Horsepower	Torque (lb-ft)	L/100 km (mpg)	
				City	Highway
2.4L I-4	4-speed automatic	173	166	10.3 (27)	6.9 (41)*
2.4L I-4	6-speed automatic	173	166	11.8 (24)	7.3 (39)
3.6L VVT V6	6-speed automatic	283	260	11.0 (26)	6.8 (42)*

*As described on page 5.

PACKAGE DETAILS

Uconnect[™] Hands-Free Communication⁽²⁾ with Bluetooth[®]

- Auto-dimming rearview mirror with microphone
- Bluetooth streaming audio
- Remote USB port

MULTIMEDIA CENTRES

UCONNECT 130

- CD/MP3/AM/FM
- Auxiliary input jack

UCONNECT 430

- Uconnect 130 plus:
- 6.5-inch touch screen
- 28GB hard drive
- DVD format capability
- USB port on radio

UCONNECT 430N

- Uconnect 430 plus:
- Garmin[®] Navigation⁽⁴⁾
- SiriusXM[™] Satellite Radio⁽³⁾ with one-year subscription and SiriusXM Replay

UCONNECT 730N

- Uconnect 430N plus:
- Enhanced Navigation⁽⁴⁾ with dead reckoning, split screen, and voice command⁽²⁾
- 20GB hard drive (vs. 28GB)
- Uconnect with voice command⁽²⁾ of phone, radio, and music
- Bluetooth streaming audio
- Remote USB port
- iPod[®] connectivity
- iPod/USB playback with radio controls



LX



TOURING



LIMITED



S



Cloth — Black

Cloth — Light Frost



Cloth — Black

Cloth — Light Frost



Shown in Light Frost



Leather-faced — Black

Leather-faced — Pearl/Black



Leather-faced — Black with perforated suede inserts and Silver accent stitching

POWERTRAIN

- 2.4L DOHC 16V I-4 with 4-speed automatic (24C)
- 2.4L DOHC 16V I-4 with 6-speed automatic (29C)

INTERIOR AMENITIES

- Premium cloth bucket seats
- Manual adjustable seats
- Uconnect™ 130 with four speakers
- Two 12-volt auxiliary power outlets
- Auxiliary input jack
- Steering wheel-mounted audio controls
- Tilt/telescopic steering column
- Cruise control
- Instrument cluster with LED lighting
- Keyless illuminated entry
- Luxury front and rear floor mats
- Floor console with fore/aft slide armrest
- Instrument panel storage bin
- Leather-wrapped shift knob
- Tinted glass windows
- Acoustic windshield and front-side windows
- Front and rear solar-control glass
- Air conditioning and air filtering
- Sun visors with mirrors

SAFETY & SECURITY

- Four air bags⁽⁷⁾
- Reactive front head restraints⁽⁶⁾
- Four-wheel disc antilock brakes
- Electronic Stability Control⁽⁸⁾ with Traction Control
- Child seat anchor system (LATCH)
- Engine block heater
- Sentry Key[®] antitheft engine immobilizer
- Tire pressure monitoring warning lamp
- Security alarm

EXTERIOR FEATURES

- 17-inch aluminum wheels
- P225/55R17 BSW All-Season touring tires
- Touring suspension
- Compact spare tire
- Hard tonneau cover
- Power convertible top
- Power windows, front one-touch down
- Bi-function halogen projector headlamps
- LED taillamps
- Body-colour door handles
- Body-colour power heated mirrors, manual folding
- Power locks

OPTIONS

- Power six-way driver/front-passenger seats
- Body-colour bodyside moulding
- SiriusXM™ Satellite Radio⁽⁹⁾ with one-year subscription
- Uconnect Hands-Free Communication⁽²⁾ with Bluetooth[®]

POWERTRAIN

- 3.6L Pentastar™ Variable Valve Timing (VVT) V6 with 6-speed automatic (27V)

DIFFERENCES/UPGRADES VS. LX

- 18-inch polished aluminum wheels
- Dual chrome exhaust tips
- Power top- and windows-down functionality on key fob
- Leather-wrapped steering wheel
- SiriusXM Satellite Radio⁽⁹⁾ with one-year subscription
- Premium fog lamps
- Heated front seats
- Remote start system
- Six-way power driver/front-passenger seats
- Automatic Temperature Control
- Traveller/mini trip computer
- Six speakers
- Tire pressure monitoring display
- Automatic headlamps
- Temperature and compass gauge
- Engine oil cooler
- 160-amp alternator

OPTIONS

- Windscreen
- Body-colour bodyside moulding
- Uconnect 430 Multimedia Centre
- Uconnect 430N Multimedia Centre
- Uconnect 730N Multimedia Centre
- Uconnect Hands-Free Communication⁽²⁾ with Bluetooth
- Universal garage door opener⁽⁹⁾

POWERTRAIN

- 3.6L Pentastar™ Variable Valve Timing (VVT) V6 with 6-speed automatic (27W)

DIFFERENCES/UPGRADES VS. TOURING

- Premium leather-faced seats
- Uconnect™ 430 Multimedia Centre
- Uconnect hands-free communication⁽²⁾ with Bluetooth[®]
- Bright door handles
- Bright front door sill scuff pads
- Chrome exterior mirrors
- Windscreen
- Auto-dimming rearview mirror with microphone
- Universal garage door opener⁽⁹⁾

OPTIONS

- Six Boston Acoustics[®] speakers
- Uconnect 430N Multimedia Centre
- Uconnect 730N Multimedia Centre
- Power retractable hard top

POWERTRAIN

- 3.6L Pentastar VVT V6 with 6-speed automatic (27S)

DIFFERENCES/UPGRADES VS. LIMITED

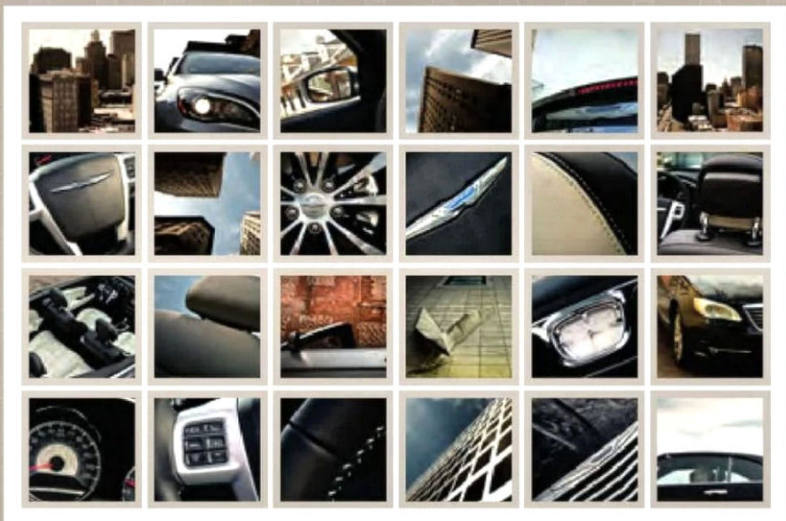
- 18-inch polished aluminum wheels with Black pockets
- Leather-faced seats with suede inserts and Silver accent stitching
- Perforated leather-wrapped steering wheel
- Unique Black grille
- Black headlamp treatment
- Black front and rear fascia insert
- Six Boston Acoustics speakers
- Body-colour exterior mirrors
- Body-colour door handles
- Unique 'S' wing badge
- 'S' badge

OPTIONS

- Uconnect 430N Multimedia Centre
- Uconnect 730N Multimedia Centre
- Power retractable hard top

CHRYSLER

1-800-361-3700 | CHRYSLER.CA



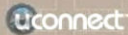
WARRANTIES 2013 Chrysler, Jeep, Dodge, and Ram vehicles are backed by a 5-year or 100,000-kilometre* fully transferable Powertrain Limited Warranty with \$0 deductible plus 24-hour roadside assistance. SRT® vehicles are backed by a 5-year or 60,000-kilometre* fully transferable Powertrain Limited Warranty with \$0 deductible plus 24-hour roadside assistance. Basic Warranty coverage is for 3 years or 60,000 kilometres. Rust-through coverage on all body sheet metal is for 3 years. The Cummins® Turbo Diesel engine is protected by a separate Limited Warranty, covering the engine for 5 years or 160,000 kilometres.*

AUTHENTIC CHRYSLER ACCESSORIES BY MOPAR, are designed specifically for your Chrysler vehicle for exceptional fit, finish, and performance. Visit your retailer or mopar.ca

SIRIUSXM™ SATELLITE RADIO SiriusXM Satellite Radio delivers over 130 channels, including 100% commercial-free music, sports, news, talk, and entertainment. Factory-installed SiriusXM Satellite Radio includes a one-year subscription. For more information, go to siriusxm.ca

CHRYSLER SERVICE CONTRACTS Chrysler Canada Inc. has a vested interest in your satisfaction and owner experience with your new vehicle. Chrysler Canada Service Contracts offer extended service and maintenance plans to help ensure you'll enjoy your vehicle for many years down the road – for just pennies a day. For more information on comprehensive vehicle coverage, see your local Chrysler, Jeep, Dodge, and Ram retailer, call 1-800-465-2001, or visit chryslercanada.ca/owners

*Whichever comes first. Some conditions may apply. †The 5-Year/100,000-Kilometre Powertrain Limited Warranty does not apply to vehicles sold for certain commercial uses. See your retailer for full details.



ABOUT THIS CATALOGUE: Since the time of printing, some of the information you'll find in this catalogue may have been updated. Ask your retailer for details. Some of the equipment shown or described throughout this catalogue is available at extra cost. Specifications, descriptions, illustrative materials, and all competitive comparisons contained herein are as accurate as known at the time this publication was approved for printing. Chrysler Canada Inc. reserves the right to make changes at any time without notice and without incurring obligation. For the price of the model with the equipment you desire, or verification of specifications contained herein, see your Chrysler, Jeep, Dodge, Ram, and SRT Retailer. Chrysler, Jeep, Dodge, Ram, Mopar, SRT, and Sotny Key are registered trademarks and Uconnect and Pentastar are trademarks of Chrysler Group LLC. ©2012 Chrysler Canada Inc. All rights reserved. AutoStitch is a trademark of Blast Performance. Bluetooth is a registered trademark of Bluetooth SIG, Inc. Boston Acoustics and the Boston Acoustics logo are registered trademarks of Boston Acoustics, Inc. All rights reserved. Garmin and the Garmin logo are registered trademarks of Garmin, Ltd. or its subsidiaries and are registered in one or more countries. All rights reserved. Goodyear is a registered trademark of The Goodyear Tire & Rubber Company. iPod is a registered trademark of Apple Inc. All rights reserved. Sirius, XM, the SiriusXM logo, channel names, and logos are trademarks of SiriusXM Radio Inc. and are used under license. Cummins is a registered trademark of Cummins, Inc. All other trademarks, images, and logos are property of their respective owners and are displayed in this publication with permission. All rights reserved.

DISCLAIMERS: ¹Based on Chrysler Canada internal standard specialty segmentation for convertibles. ²Driving while distracted can result in loss of vehicle control. Only use mobile phones and other devices, even with voice commands, when it is safe to do so. Voice commands of phone require a Bluetooth-compatible phone. ³Requires SiriusXM™ Radio subscriptions governed by SIRIUS terms and conditions available at siriusxm.ca. ⁴Never program while driving. GPS mapping may not be detailed in all areas or reflect current road regulations. ⁵Phone must support Bluetooth Phone Book Access Profile (PBAP). ⁶Always sit properly with the head restraint properly adjusted. Never place anything in front of the head restraint. ⁷The advanced front air bags in this vehicle are certified to the federal regulations for advanced air bags. Children 12 years old and younger should always ride buckled up in a rear seat. Infants in rear-facing child restraints should never ride in the front seat of a vehicle with a passenger front air bag. All occupants should always wear their lap and shoulder belts properly. ⁸No system can repel the laws of physics or overcome careless driving actions. Performance is limited by available traction, which snow, ice, and other conditions can affect. When the warning lamp flashes, the driver needs to use less throttle and adapt speed and driving behaviour to prevailing road conditions. ⁹Not compatible with all garage door openers.

CHRYSLER IS A REGISTERED TRADEMARK OF CHRYSLER GROUP LLC.

52013CS81E