

CHRYSLER



2013 | TOWN & COUNTRY





IT STANDS TO REASON THAT CANADA'S ULTIMATE MINIVAN HAS THE HIGHEST MODEL LOYALTY IN ITS SEGMENT.¹⁰ IT'S NOT ONLY ABOUT GETTING PASSENGERS FROM POINTS A TO B, IT'S ABOUT EVERYONE ENJOYING THE RIDE. INDUSTRY-EXCLUSIVE SUPER STOW 'N GO[®] AND

BEST-IN-CLASS HORSEPOWER.¹² THE PREMIUM CRAFTSMANSHIP AND BENCHMARK STYLING PROVIDE THE LUXURY YOU WANT, WITH THE CONVENIENCE, SAFETY, AND FLEXIBILITY YOU NEED, AND IT'S ONLY OFFERED IN THE CHRYSLER TOWN & COUNTRY.



THE MOST INNOVATIVE MINIVAN IN ITS CLASS⁽²⁾

Town & Country Limited stands as Canada's most luxurious minivan⁽²⁾ with standard features such as Nappa leather-faced seating and a class-exclusive heated wood and leather-wrapped steering wheel⁽²⁾ with integrated cruise and audio controls. With eight-way power driver and front-passenger seats, heated front and second-row seats, power second- and third-row windows with manual shades, and comfortable seating for seven, this is a vehicle that considers passenger comfort as intuitively as the driver's. All this luxury is enhanced further with standard amenities such as a nine-speaker, 506-watt premium audio system, a Uconnect™ 430 multimedia centre with 6.5-inch touch screen including hands-free communication⁽³⁾, SiriusXM™ Satellite Radio⁽⁴⁾ with one-year subscription, and available features like the class-exclusive dual-screen entertainment system⁽²⁾ with all-new industry-exclusive Blu-ray™ technology. Luxury is much more than a feeling.



The game shown above — Disney/Pixar Brave: The Video Game — is available now for Xbox 360. © Disney.

CLASS-EXCLUSIVE DUAL-SCREEN ENTERTAINMENT⁽²⁾

Let this premium entertainment system help keep your passengers occupied. The 2013 Town & Country introduces an all-new industry-exclusive Blu-ray™ player to its class-exclusive available second- and third-row dual entertainment system⁽²⁾. With two all-new independent nine-inch high-resolution VGA screens, Blu-ray/DVD compatibility, and game console inputs, the kids don't have to settle on just one thing to watch. The video system can be operated from the rear-seat entertainment unit, including all-new HDMI connectivity and two updated USB ports, or the radio head unit. The overhead rail system includes storage for the wireless headphones and remote control.

INDUSTRY-EXCLUSIVE
STOW 'N GO

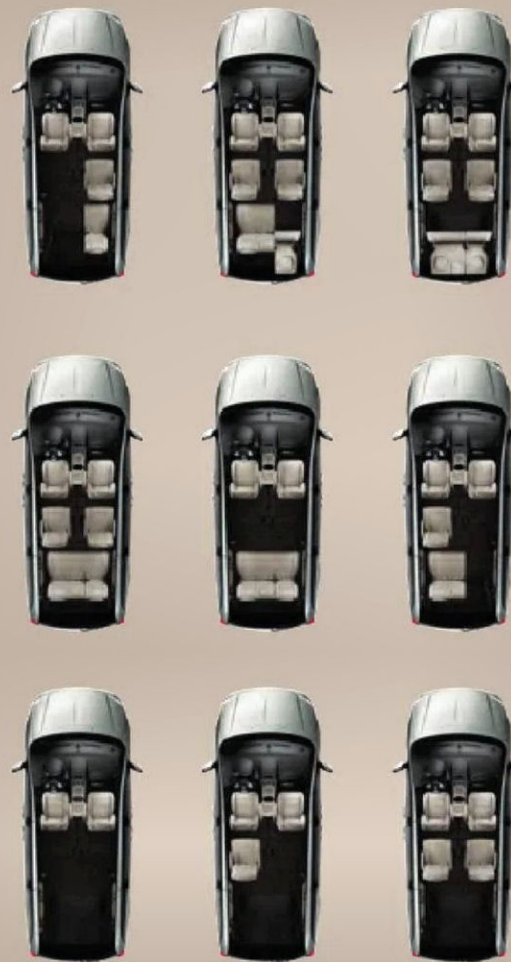


ONE MOTION. The simple second-row Super Stow 'n Go system folds the head restraint⁽⁵⁾ down automatically for easy operation and reveals what makes Town & Country legendary; industry-exclusive Stow 'n Go seating with in-floor storage bins and fold-in-floor second- and third-row seats. When the seats are in their upright position, second-row in-floor bins offer 180 litres of concealed storage space.

CLASS-EXCLUSIVE POWER-FOLDING THIRD-ROW⁽²⁾ With the touch of a button, the available class-exclusive one-touch power-folding-stowing third-row 60/40 split-bench seat⁽⁷⁾ folds directly into the floor. This feature also includes obstacle detection⁽⁶⁾ to automatically pause if something is detected in its path of motion.

Properly secure all cargo.

THE INDUSTRY'S MOST VERSATILE
 PASSENGER AND CARGO VEHICLE,
 WITH 81 POSSIBLE CONFIGURATIONS.



THE MOST INNOVATIVE SEATING AND STORAGE IN ITS CLASS⁽²⁾ Making the most of moments together means not needing to sacrifice luxury for practicality. With all seats stowed, the Town & Country yields a flat cargo floor and 4072 litres of storage for easy loading without ever having to remove a seat. When the seats are in their upright position, in-floor bins store a multitude of items from laptops and purses to toys, backpacks, sleeping bags, and shopping bags. The premium Super Console provides power outlets, cup holders, covered storage, and more to both first- and second-row passengers. The class-exclusive Stow 'n Place™ roof-rack system⁽²⁾ offers additional storage for excess baggage, with the convenience of crossbars that stow into the side rails when not in use.



OFFERS MORE THAN 40 SAFETY, SECURITY, AND TECHNOLOGY FEATURES TO HELP PROTECT WHAT MATTERS MOST.

SECURITY ALARM. This available system monitors the door-ajar switches as well as the ignition circuit for unauthorized entry. The lights flash and the horn sounds, alerting you if someone else is trying to enter your vehicle.

TIRE PRESSURE MONITORING SYSTEM. Individual tire-pressure levels are displayed in the instrument cluster and alert the driver when tire pressure is too high or too low.

AIR BAGS.⁽⁷⁾ Advanced multistage front air bags regulate deployment force based on impact. Supplemental front-seat side air bags, a driver's knee blocker air bag, and supplemental side-curtain air bags for front and rear outboard occupants are all standard.

REACTIVE FRONT HEAD RESTRAINTS.⁽⁸⁾ In the event of a rear-end collision, the head restraints automatically move forward and upward to decrease the space between the head restraint and the occupant's head. Standard.

CLASS-EXCLUSIVE POWER SLIDING DOORS AND LIFTGATE⁽²⁾ WITH OBSTACLE DETECTION.⁽⁶⁾ With the push of a button, in cabin or on the key fob, the dual sliding doors or liftgate open. These power doors automatically halt if obstacles⁽⁶⁾ are detected. Standard.

CHILD PROTECTION REAR DOOR LOCKS. A small lever on the front edge of the sliding door disables the rear doors' inside release handles. Standard.

POWER ADJUSTABLE PEDALS. The adjustable brake and accelerator pedals allow drivers to customize their position, enabling them to maintain a comfortable distance from the steering wheel. Standard.

STRATEGICALLY PLACED HIGH-STRENGTH STEEL. The standard Town & Country architecture includes dual-phase, high-strength, and hot-stamped steel, resulting in a strong safety cage that contributes to overall vehicle-impact performance.

KEYLESS ENTER 'N GO.TM With the key fob in a pocket or purse, you can automatically unlock the doors and liftgate with the touch of the door handle. This available system allows quick access and includes the added convenience of a push-button-start ignition.

CONSTANT-FORCE RETRACTORS. Seat belt retractors sense vehicle impact and immediately apply pressure to the seat belt to properly position the occupant before the full load of impact is imparted. The retractors then reduce the seat belt load in order to moderate forces during the impact event.



SAFETYTEC™ This available package bundles some of the most technologically advanced safety and security features available today. It includes Blind-Spot Monitoring (BSM)⁽⁸⁾ with class-exclusive Rear Cross-Path Detection,⁽⁹⁾ Park-Sense® Rear Park Assist System,⁽¹⁰⁾ Auto High Beam Headlamp Control, rain-sensing windshield wipers, and more.

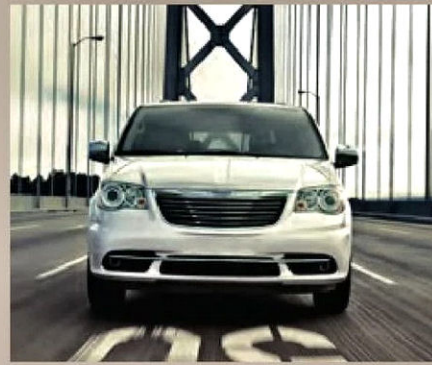
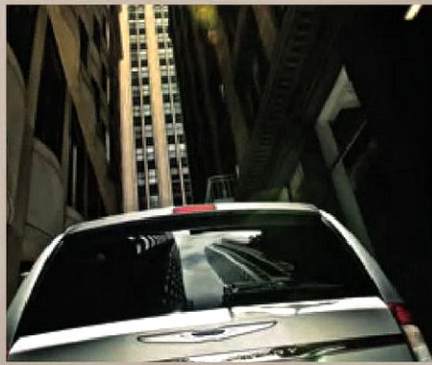
PARKVIEW® REAR BACK-UP CAMERA⁽¹⁰⁾ When in Reverse, a wide-angle view of the area immediately behind the vehicle is displayed on the Uconnect™ screen. Grid lines assist when manoeuvring into tight spaces. Standard.

BLIND-SPOT MONITORING (BSM)⁽⁸⁾ This technology has dual radar sensors that constantly monitor driver blind spots, providing notification of an encroaching vehicle via illuminated icons on the sideview mirrors and by an audible chime if the turn signal is activated. Available.

CLASS-EXCLUSIVE REAR CROSS-PATH DETECTION⁽⁹⁾ When in Reverse, rear sensors warn the driver with an audible chime if cross traffic approaches the vehicle. Included with Blind-Spot Monitoring.⁽⁸⁾

PARK-SENSE® REAR PARK ASSIST⁽¹⁰⁾ When in Reverse, sensors detect the presence of objects in the back-up pathway and provide audible and visual warnings. Available.

ENHANCED ACCIDENT RESPONSE SYSTEM (EARS). This system makes it easier for emergency personnel to see and reach occupants in the event of an accident involving air bag⁽⁷⁾ deployment by turning on interior lighting, flashing hazard lamps, unlocking doors, and shutting off the flow of fuel to the engine once the vehicle has stopped. Standard.



IT STANDS FOR STRENGTH. Since getting everyone there confidently is the only option, you'll know why it matters to have a vehicle this powerful. Powered by the standard 3.6L Pentastar™ V6 engine with Variable Valve Timing (VVT), this award-winning engine boasts Best-in-Class 283 horsepower and 260 lb-ft of torque,⁽²⁾ yet efficiently provides up to 8.0 L/100 km (35 mpg) highway,* combining an exceptional blend of high torque, fuel efficiency, low emissions, and quiet operation. The advanced oil filter system, which helps eliminate oil spills for more efficient disposal, and Flex Fuel capability are just two of the many technological advancements engineered into the Pentastar VVT V6 engine. The Chrysler Town & Country is also the only vehicle in its class with the Fuel Economizer feature⁽²⁾ that alters transmission shift patterns to help improve fuel efficiency.

TRAILER TOW GROUP. Get more out of the country when you get out of town. With towing capacity of up to 1588 kg (3500 lb),⁽¹⁾ a Class II hitch receiver, and a trailer tow wiring harness as well as load levelling and height control, this available package gives even greater options to the already versatile lifestyle that Town & Country has to offer. Add in the standard trailer Sway Control, part of Electronic Stability Control,⁽²⁾ which recognizes sway unique to trailering and will automatically apply the brakes to any individual wheel and/or reduce engine power to help eliminate trailer sway. You can rest at ease knowing this system will help keep you and the toys you are towing⁽¹⁾ safely on course and under control.

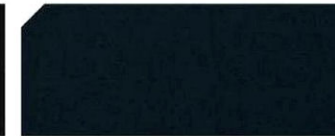
*See details on page 13.



EXTERIOR COLOURS All models not available in all colours.



BRILLIANT BLACK CRYSTAL PEARL



MAXIMUM STEEL METALLIC



CASHMERE PEARL



CRYSTAL BLUE PEARL



BILLET METALLIC



DEEP CHERRY RED CRYSTAL PEARL



STONE WHITE



TRUE BLUE PEARL

SPECIFICATIONS⁴

Weight			
GVWR, kg (lb)	2744 (6050)		
Curb Weight, kg (lb)	2115 (4652)		
Towing (when properly equipped)			
Towing Capacity, max. kg (lb)	1588 (3500)		
Exterior			
Wheelbase	3078 (121.2)		
Overall Height (maximum)	1725 (67.9)		
Front Track	1666 (65.6)		
Rear Track	1647 (64.8)		
Overall Width	1998 (78.7)		
Overall Width with Side Mirrors	2247 (88.5)		
Overall Length	5151 (202.8)		
Ground Clearance (minimum)	142 (5.6)		
Interior			
	Front	Second	Third
Headroom	1012 (39.8)	999 (39.3)	963 (37.9)
Headroom with Sunroof	946 (37.2)	999 (39.3)	963 (37.9)
Legroom	1034 (40.7)	926 (36.5)	830 (32.7)
Hip Room	1485 (58.4)	1651 (65.0)	1238 (48.7)
Shoulder Room	1619 (63.7)	1628 (64.1)	1575 (62.0)
Capacities			
Cargo Volume, Behind Third-Row, L (cu ft)	934 (33.0)		
Cargo Volume, Behind Second-Row with Third-Row seats stowed, L (cu ft)	2359 (83.3)		
Cargo, Behind Front-Row with Second- and Third-row seats stowed, L (cu ft)	4072 (143.8)		
Seating Capacity	7		
Volume Index, L (cu ft)	5544 (195.8)		
Fuel Tank Capacity, L (gal)	76 (16.7)		

⁴All dimensions are in millimetres (inches) unless otherwise noted.

POWER & FUEL ECONOMY

Based on 2013 EnerGuide fuel consumption ratings. Government of Canada test methods used. Your actual fuel consumption will vary based on driving habits and other factors. Ask your retailer for EnerGuide information.

Engine	Transmission	Horsepower	Torque (lb-ft)	L/100 km (mpg)	
				City	Highway
3.6L VVT V6	6-speed automatic	283	260	12.5 (23)	8.0 (35)*

*As described on page 12.

MULTIMEDIA CENTRES

UCONNECT™ 430

- CD/MP3/AM/FM
- 6.5-inch touch screen
- 28GB hard drive
- DVD playback capability
- USB port on radio
- ParkView® Rear Back-Up Camera⁽¹⁰⁾
- Auxiliary input jack

UCONNECT 430N

Uconnect 430 features plus:

- Garmin® Navigation⁽¹³⁾
- SiriusXM™ Satellite Radio⁽⁴⁾ with one-year subscription
- SiriusXM Replay, favourite song/artist alert
- SiriusXM Replay, game alert

UCONNECT 730N

Uconnect 430N features plus:

- Enhanced navigation⁽¹³⁾ with dead reckoning, split screen, and voice command⁽⁵⁾
- 20GB hard drive (vs. 28GB)
- Uconnect with voice command⁽⁶⁾ of phone, radio, and music
- Bluetooth® streaming audio
- Remote USB port
- iPod® connectivity
- iPod/USB playback with radio controls



TOURING



Cloth — Black



Cloth — Medium Frost



Cloth — Light Greystone



POWERTRAIN

- 3.6L Pentastar™ Variable Valve Timing (VVT) V6 with 6-speed automatic (29K)

INTERIOR AMENITIES

- Second-row Super Stow 'n Go®
- Third-row Stow 'n Go with tailgate seating
- Eight-way power driver seat, two-way manual driver lumbar adjuster
- Uconnect™ 430 with 6.5-inch touch screen and six speakers
- SiriusXM™ Satellite Radio⁽⁴⁾ with one-year subscription
- Leather-wrapped steering wheel with audio and cruise controls
- Tilt/telescopic steering column
- Auxiliary input jack
- 115-volt auxiliary power outlet
- Power liftgate and sliding doors with obstacle detection⁽⁵⁾
- Overhead ambient surround lighting
- Tri-zone automatic temperature control and air filtering
- Super Console
- Overhead storage bins and console
- Lower instrument panel with cubby bin
- Dual glove boxes
- Electronic Vehicle Information Centre
- Power adjustable pedals
- Universal garage door opener⁽¹⁴⁾
- Three 12-volt auxiliary power outlets

SAFETY & SECURITY

- Advanced multistage front air bags⁽⁷⁾
- Supplemental front-seat side air bags
- Supplemental side-curtain air bags
- Driver's knee blocker air bag
- Electronic Stability Control⁽⁸⁾ with All-Speed Traction Control and Trailer Sway Control
- ParkView® Rear Back-Up Camera⁽¹⁰⁾
- Child seat anchor system (LATCH)
- Keyless entry
- Sentry Key® anti-theft engine immobilizer
- Tire pressure monitoring warning lamp
- Four-wheel disc antilock brakes
- Engine block heater

EXTERIOR FEATURES

- 17-inch aluminum wheels
- P225/65R17 BSW All-Season Touring tires
- Power locks and front, second-row, and rear-quarter windows
- Body-colour door handles
- Body-colour, power heated mirrors, manual folding
- Automatic quad halogen headlamps
- Premium fog lamps
- Black Stow 'n Place™ roof rack system
- Touring suspension

OPTIONS

- SafetyTec™
- Trailer Tow Group
- Passenger's Convenience Group
- Security Group
- Driver Convenience Group
- Entertainment Group #2
- Entertainment Group #5
- Power Sunroof
- Keyless Enter 'n Go™ with Proximity Entry



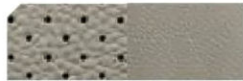
TOURING-L



Torino Leather-faced — Medium Frost



Torino Leather-faced — Black



Torino Leather-faced — Light Greystone



POWERTRAIN

- 3.6L Pentastar VVT V6 with 6-speed automatic (29J)

DIFFERENCES/UPGRADES VS. TOURING

- Leather-faced seats
- Heated front seats
- Power front driver/passenger seats
- Eight-way power driver seat with power two-way lumbar adjuster
- 17-inch Tech Silver aluminum wheels
- Remote start
- Second- and third-row window shades
- Tire pressure monitoring display
- Security alarm

OPTIONS

- SafetyTec
- Trailer Tow Group
- Driver Convenience Group
- Premium Group
- Entertainment Group #2
- Entertainment Group #5
- Power Sunroof
- Keyless Enter 'n Go with Proximity Entry
- Uconnect 430N Multimedia Centre
- Uconnect 730N Multimedia Centre



LIMITED



Nappa Leather-faced — Light Greystone



Nappa Leather-faced — Black



Nappa Leather-faced — Medium Frost



POWERTRAIN

- 3.6L Pentastar™ VVT V6 with 6-speed automatic (29X)

DIFFERENCES/UPGRADES VS. TOURING-L

- Luxury leather-faced seats
- 17-inch polished aluminum wheels
- Heated wood/leather-wrapped steering wheel
- High Intensity Discharge (HID) headlamps
- Power eight-way driver seat with memory
- Power eight-way passenger seat
- Heated second-row seats
- Uconnect™ hands-free communication⁽⁵⁾
- Bluetooth streaming audio
- Nine amplified speakers with subwoofer
- 506-watt amplifier
- Bright door handles
- Bright side Stow 'n Place™ roof rack system
- Keyless Enter 'n Go™ with proximity entry
- Park-Sense® Rear Park Assist System⁽¹⁰⁾
- Blind-Spot Monitoring⁽⁹⁾ with Rear Cross-Path Detection⁽¹⁰⁾
- Rain-sensing windshield wipers
- Auto High Beam Headlamp Control
- Auto-dimming exterior driver mirror
- Power folding multifunction mirrors
- Auto-dimming rearview mirror with microphone
- Chrome exterior mirrors with supplemental signals and memory
- Remote USB port
- Power adjustable pedals with memory
- Limited badge

OPTIONS

- Trailer Tow Group
- Entertainment Group #2
- Entertainment Group #5
- Power Sunroof
- Power Folding Third-row Seat
- Uconnect 430N Multimedia Centre
- Uconnect 730N Multimedia Centre

SafetyTec™

- Auto-dimming rearview mirror
- Power multifunction mirrors, manual folding
- Rain-sensing windshield wipers
- Auto high beam headlamp control
- Tire pressure monitoring display
- Blind-Spot Monitoring⁽⁹⁾ with Rear Cross-Path Detection⁽¹⁰⁾
- Park-Sense Rear Park Assist System⁽¹⁰⁾

Trailer Tow Group

- Load-leveling and height control
- Trailer tow wiring harness
- Class II hitch receiver

Passenger's Convenience Group

- Second- and third-row window shades
- Heated second-row seats

Security Group

- Security alarm
- Remote start

Driver Convenience Group

- Auto-dimming rearview mirror with microphone
- Heated front seats
- Heated steering wheel
- Bluetooth streaming audio
- Uconnect hands-free communication⁽⁵⁾
- Remote USB port

Premium Group

- Heated second-row seats
- Power folding third-row seat

Entertainment Group #2

- Auto-dimming rearview mirror with microphone
- DVD player
- Wireless headphones
- Third-row overhead 9-inch video screen
- Second-row overhead 9-inch video screen
- Video remote control
- Bluetooth streaming audio
- Uconnect hands-free communication⁽⁵⁾
- Remote USB port

Power Sunroof

- Mini overhead console
- Dual rear overhead mini consoles

Keyless Enter 'n Go

- Bright door handles
- Remote proximity entry
- Push-button stop/start

Entertainment Group #5

- Blu-ray™ player
- Wireless headphones
- Video remote control
- Second- and third-row 9-inch VGA video screens
- Two remote USB ports
- 115-volt auxiliary outlet
- High-Definition Multimedia Interface (HDMI) port



Uconnect is an intuitive, touch-screen hub for all your media – cell phone,⁽³⁾ smartphone, satellite radio, navigation system,⁽¹³⁾ and MP3 player. You'll stay connected, informed, entertained, and focused on driving with this voice command⁽⁵⁾-capable, user-friendly system.

CHRYSLER

1-800-361-3700 | CHRYSLER.CA



WARRANTIES 2013 Chrysler, Jeep, Dodge, and Ram vehicles are backed by a 5-year or 100,000-kilometre* fully transferable Powertrain Limited Warranty with \$0 deductible plus 24-hour roadside assistance. SRT® vehicles are backed by a 3-year or 60,000-kilometre* fully transferable Powertrain Limited Warranty with \$0 deductible plus 24-hour roadside assistance. Basic Warranty coverage is for 3 years or 60,000 kilometres. Rust-through coverage on all body sheet metal is for 3 years. The Cummins® Turbo Diesel engine is protected by a separate Limited Warranty, covering the engine for 5 years or 160,000 kilometres.*

AUTHENTIC CHRYSLER ACCESSORIES BY MOPAR, are designed specifically for your Chrysler vehicle for exceptional fit, finish, and performance. Visit your retailer or mopar.ca

SIRIUSXM™ SATELLITE RADIO SiriusXM Satellite Radio delivers over 130 channels, including 100% commercial-free music, sports, news, talk, and entertainment. Factory-installed SiriusXM Satellite Radio includes a one-year subscription. For more information, go to siriusxm.ca

CHRYSLER SERVICE CONTRACTS Chrysler Canada Inc. has a vested interest in your satisfaction and owner experience with your new vehicle. Chrysler Canada Service Contracts offer extended service and maintenance plans to help ensure you'll enjoy your vehicle for many years down the road – for just pennies a day. For more information on comprehensive vehicle coverage, see your local Chrysler, Jeep, Dodge, and Ram Retailer, call 1-800-465-2001, or visit chryslercanada.ca/owners

*Whichever comes first. Some conditions may apply. The 5-year/100,000-kilometre Powertrain Limited Warranty does not apply to vehicles sold for certain commercial uses. See your retailer for full details.



ABOUT THIS CATALOGUE: Since the time of printing, some of the information you'll find in this catalogue may have been updated. Ask your retailer for details. Some of the equipment shown or described throughout this catalogue is available at extra cost. Specifications, descriptions, illustrative materials, and all competitive comparisons contained herein are as accurate as known at the time this publication was approved for printing. Chrysler Canada Inc. reserves the right to make changes at any time without notice and without incurring obligation. For the price of the model with the equipment you desire, or verification of specifications contained herein, see your Chrysler, Jeep, Dodge, Ram, and SRT Retailer. Chrysler, Jeep, Dodge, Ram, Town & Country, Chrysler wing badge, Stow n Go, SRT, Mopar, ParkSense, ParkView, and Sentry Key are registered trademarks and Uconnect, Pentastar, SafetyTc, Stow n Place, and Keyless Enter n Go are trademarks of Chrysler Group LLC. © 2012 Chrysler Canada Inc. All rights reserved. Bluetooth is a registered trademark of Bluetooth SIG, Inc. Sirius, XM, and related marks and logos are trademarks of SiriusXM Radio Inc. Blu-ray is a trademark of the Blu-ray Disc Association. Garmin and the Garmin logo are registered trademarks of Garmin, Ltd. or its subsidiaries and are registered in one or more countries. iPod is a registered trademark of Apple Inc. Disney is a registered trademark of Disney. Xbox 360 is a registered trademark of Xbox. All rights reserved. Michelin is a registered trademark of Michelin North America, Inc. Cummins is a registered trademark of Cummins, Inc. All other trademarks, images, and logos are property of their respective owners and are displayed in this publication with permission. All rights reserved.

DISCLAIMERS: ¹Chrysler Town & Country was recognized by Polk for having the highest Model Loyalty in the Minivan Segment for the 2011 model year. ²Based on 2012 Ward's Small Van segmentation. Excludes other vehicles designed and manufactured by Chrysler Group LLC. ³Driving while distracted can result in loss of vehicle control. Only use mobile phones and other devices, even with voice commands, when it is safe to do so. Voice commands of phone require a Bluetooth-compatible phone. ⁴Requires SiriusXM™ Radio subscriptions governed by SIRIUS. Terms and conditions available at siriusxm.ca. ⁵Always sit properly with the head restraint properly adjusted. Never place anything in front of the head restraint. ⁶Obstructs most obstacles. Always use care. ⁷The advanced front air bags in this vehicle are certified to the federal regulations for advanced air bags. Children 12 years old and younger should always sit buckled up in a rear seat. Infants in rear-facing child restraints should never ride in the front seat of a vehicle with a passenger front air bag. All occupants should always wear lap and shoulder belts properly. ⁸Always check visually for vehicles prior to changing lanes. ⁹Based on 2012 Ward's Small Van segmentation. Excludes other vehicles designed and manufactured by Chrysler Group LLC. Always check entire surroundings before manoeuvring your vehicle. ¹⁰Always check entire surroundings before manoeuvring your vehicle. ¹¹When properly equipped. ¹²No system can repeal the laws of physics or overcome careless driving actions. Performance is limited by available traction, which snow, ice, and other conditions can affect. When the warning lamp flashes, the driver needs to use less throttle and adapt speed and driving behaviour to prevailing road conditions. ¹³Never program while driving. GPS mapping may not be detailed in all areas or reflect current road regulations. ¹⁴Not compatible with all garage door openers.

CHRYSLER IS A REGISTERED TRADEMARK OF CHRYSLER GROUP LLC.

52013C162E