

# The 2025 Kia EV9



Movement that inspires





# Reshaping the way you move

EV9 embraces SUV form and capability in an enhanced EV package. It's bold, spacious and quiet on city streets; confident, robust and powerful when weather and terrain present a challenge; and able to tow up to 5,000 lb. (2,267 kg) when properly equipped.



Go from 10 to 80% charge in as little as 24 minutes with EV9's high-speed 800V multi-charging system<sup>9</sup>.



Add a variety of unique front-end lighting signatures with EV9's Digital Pattern Lighting Grille, available as a Downloaded Feature via the Kia Connect Store.\*



The smart power liftgate opens automatically —providing easy cargo access and up to 2,314 litres (81.7 cu. ft.) of cargo space when the 2<sup>nd</sup> and 3<sup>rd</sup> row seats are folded.



Remote Smart Parking Assist 2 (RSPA2) is another Downloaded Feature available via the Kia Connect Store. Delivered as a wireless download, it lets you park your EV9 safely from outside the vehicle, using only your key fob or smartphone<sup>1,2</sup>.\*

\* Available feature. Visit [kia.ca](http://kia.ca) for full details.





EV9 is equipped with an expansive digital display combining two 12.3" touchscreens and a 5" climate control display. This can be complemented with an available 12" heads-up display (HUD)\* that projects key driving information on the windshield, so the driver stays focused on the road<sup>3</sup>.



Column-type electronic shift lever with an integrated start button.



Blind view monitor displays the blind spot in the direction your turn signal is indicating.\*



Reclining relaxation seats make long journeys more enjoyable for 2<sup>nd</sup> row passengers.\*



Front passenger walk-in switches allow the driver and rear occupants to control the front passenger seat for more space in the front or 2<sup>nd</sup> row.



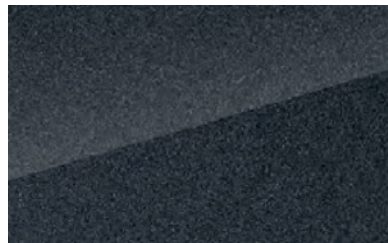
Digital Key 2.0 turns your smartphone into a secure key that unlocks the doors and starts the vehicle. A Share Key function lets you share access with others on their phones<sup>2</sup>.

\* Available feature. Visit [kia.ca](http://kia.ca) for full details.

## Exterior colours



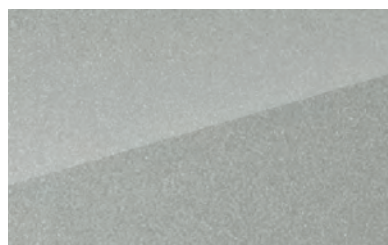
Snow White Pearl



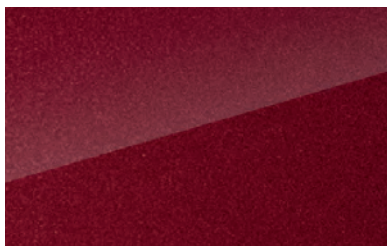
Panthera Metal



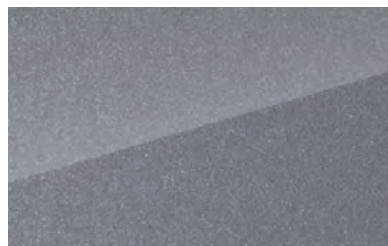
Aurora Black



Ivory Silver\*



Flare Red\*



Pebble Grey\*



Ocean Blue\*\*



Iceberg Green\*\*

\* Not available with Light or Wind trim.

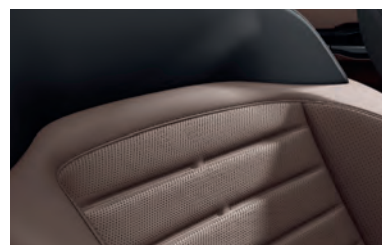
^ Only available with Land Premium package and GT-Line package.

Some seating, paint and trim configurations may be limited. Visit [kia.ca](http://kia.ca) for full details.

## Interior colours



Light / Wind / Land  
Grey & Black synthetic leather



Land with Premium Package option  
Brown & Black synthetic leather



Land with GT-Line Package  
Grey & Black synthetic leather



Land with GT-Line Package option  
Brown & Black synthetic leather

## Wheels



Light / Wind / Land  
19" alloy wheels with aerodynamic covers




Land with Plus or Premium Package  
20" alloy wheels with aerodynamic covers



Land with GT-Line Package  
21" alloy wheels with aerodynamic covers



# Features

 Downloaded Features available for over-the-air (OTA) purchase via the Kia Connect Store

## Light RWD

### EXTERIOR

- 76.1 kWh lithium ion polymer battery
- 19" alloy wheels with aerodynamic covers
- Tire mobility kit
- LED projection headlights
- LED positioning lights & daytime running lights
- LED taillights
- Rear spoiler with LED high mounted stop lamp
- Automatic headlights
- Power and heated sideview mirrors with LED signal repeaters
- Body coloured outside mirrors
- Body coloured auto/powered flush type outside door handles
- Silver metal painted front and rear skid plates and bumper garnish
- Satin chrome DLO lower beltline
- Gloss black DLO upper beltline and A/B/C pillars
- Aeroblade wipers
- Rain sensing wipers
- Acoustic laminated windshield
- Solar glass windshield and front doors
- Privacy tinted rear door and cargo area glass
- Trailer package pre-wiring

### SAFETY

- 8 airbags
- Electronic stability control (ESC)
- 4-wheel anti-lock braking system (ABS)
- Hill-assist control (HAC)
- Forward collision avoidance assist with junction turning function, lane-change oncoming, lane-change side, and junction crossing<sup>1</sup>
- High beam assist (HBA)
- Lane keeping assist system (LKA)<sup>1</sup>
- Highway drive assist 2 (HDA2)<sup>1</sup>
- Lane following assist (LFA)<sup>1</sup>
- Blind-spot collision avoidance assist (BCA)<sup>1</sup>
- Blind-spot collision warning (BCW)<sup>1</sup>
- Intelligent speed limit assist (ISLA)<sup>1</sup>
- Rear cross-traffic collision avoidance assist (RCCA)<sup>1</sup>
- Rear cross-traffic collision warning (RCCW)<sup>1</sup>
- Driver attention warning (DAW)<sup>1</sup>
- Parking distance warning - front and rear (PDW)<sup>1</sup>
- Rear occupant alert<sup>1</sup>
- Safe exit assist<sup>1</sup>
- Tire pressure monitoring system (TPMS)
- Rearview camera with dynamic guidelines<sup>1</sup>
- Central door lock
- Power child door locks

### TECHNOLOGY

- 12.3" multimedia interface with integrated navigation<sup>3</sup>
- AM/FM/MP3/HD radio
- SiriusXM satellite radio<sup>5</sup>
- 6 fast charging USB ports (2 in each row)
- Auxiliary USB terminal
- Bluetooth® hands-free cell phone connectivity<sup>2,6</sup>
- Apple CarPlay® and Android Auto™ smartphone integration<sup>7,8</sup>
- 12.3" LCD/TFT Supervision instrument cluster with 5" designated HVAC display
- Kia Connect<sup>2,4</sup>
- Wireless phone charger<sup>2</sup>
- Smart key with push-button start
- Digital Key 2.0
- Finger print module (FPM)
- Smart power liftgate
- Electronic parking brake with auto hold function
- Shift By Wire (SBW)
- 12V cabin and cargo power outlets
- Smart cruise control (SCC)<sup>1</sup>
- Drive Mode Select
- Battery heating system

### INTERIOR

- Tri-zone automatic climate control
- Automatic defog system
- Roof-mounted rear HVAC vents
- Positive temperature coefficient (PTC) heater
- 7-passenger seating
- Synthetic leather seats
- 8-way power adjustable front seats with 2-way lumbar support
- Heated and air-cooled front seats
- Front passenger seat Walk-in switch
- 2<sup>nd</sup> row 60:40 folding bench seats
- 2<sup>nd</sup> row one-touch, tilt, fold and slide functions
- 2<sup>nd</sup> row centre armrest with cupholders
- 3<sup>rd</sup> row 50:50 folding seats
- Manual tilt and telescopic steering wheel
- Synthetic leather-wrapped steering wheel
- 1<sup>st</sup> row centre console with cupholders and sliding cover
- Front row seat back pockets
- LED interior lighting
- Electric Chromic auto-dimming rear-view mirror (ECM)
- Express up/down, obstacle-detecting windows
- Sliding sun visors

## Wind RWD adds to or upgrades from Light RWD

### EXTERIOR

- 99.8 kWh lithium ion polymer battery

### TECHNOLOGY

- Heat pump

### INTERIOR

- Heated steering wheel

## Land AWD adds to or upgrades from Wind RWD

### EXTERIOR

- All-wheel drive (AWD) dual motor
- Silver roof rails
- Splash guards

### TECHNOLOGY

- Terrain Modes

## Land with Plus Package adds to or upgrades from Land AWD

### EXTERIOR

- 20" alloy wheels with aerodynamic covers
- Small cube LED headlights
- Digital lighting grille base pattern
- Dual sunroof
- Black bumper and door garnish

### TECHNOLOGY

- Kia steering wheel emblem illumination

### INTERIOR

- Deluxe coated inside door handles
- Deluxe door scuff plates
- Satin chrome interior trim

-  • Digital lighting grille patterns

## Land with Premium Package adds to or upgrades from Land with Plus Package

### EXTERIOR

- Auto-dimming outside mirrors
- Laminated front and rear door glass

### SAFETY

- Parking collision avoidance assist — reverse<sup>1</sup>
- Side parking sensors<sup>1</sup>

### TECHNOLOGY

- Meridian premium audio system with 14 speakers
- Full digital display ECM mirror with HomeLink® system<sup>11</sup>
- Surround view monitor (SVM)<sup>1</sup>
- Blind view monitor<sup>1</sup>
- V2L (outside and inside)
- Ambient mood lighting

### INTERIOR

- 6-passenger seating
- Front memory seat function
- 2<sup>nd</sup> row Captain chairs
- Heated and air-cooled 2<sup>nd</sup> row seats
- Driver's seat 4-way lumbar support
- Driver's power relaxation seat
- Power tilt and telescopic steering wheel
- 2<sup>nd</sup> row window sunshades

-  • Remote smart parking assist 2 (RSPA-2)
- Digital lighting grille patterns

## Land with GT-Line Package adds to or upgrades from Land with Premium Package

### EXTERIOR

- Self-Levelizer rear suspension
- 21" alloy wheels with aerodynamic covers
- Digital lighting grille GT-Line pattern
- GT-Line design
- Bridge-type roof rails

### SAFETY

- Parking collision avoidance assist — front and side<sup>1</sup>

### TECHNOLOGY

- Heads-up display (HUD) system
- Remote smart parking assist 2 (RSPA-2)

### INTERIOR

- Driver's seat bolster adjustment
- Power fold/unfold 3<sup>rd</sup> row seats
- Front passenger seat power leg rest
- Wing-out 2<sup>nd</sup> row headrests
- 2<sup>nd</sup> row power leg rests
- Suede headliner, pillars and sun visors
- 2<sup>nd</sup> row extendable centre console
- Deluxe pedals

-  • Remote smart parking assist 2 (RSPA-2)
- Digital lighting grille patterns

# Specifications

## Mechanical

	Standard Range RWD	Long Range RWD	Long Range AWD
Engine type	Permanent Magnet Synchronous Motor	Permanent Magnet Synchronous Motor	Permanent Magnet Synchronous Motor
Horsepower (combined)	218 hp	203 hp	379 hp
Torque combined	258 lb-ft.	258 lb-ft.	516 lb-ft.
Drive type	Rear wheel drive (RWD)	Rear wheel drive (RWD)	All wheel drive (AWD)
Transmission	Single speed reduction gear	Single speed reduction gear	Single speed reduction gear

## Battery performance

	Standard Range RWD	Long Range RWD	Long Range AWD
Battery	76.1 kWh lithium ion polymer	99.8 kWh lithium ion polymer	99.8 kWh lithium ion polymer
Charger	Included portable charging cable (ICCB: In-Cable Control Box); on-board 10.9kW	Included portable charging cable (ICCB: In-Cable Control Box); on-board 10.9kW	Included portable charging cable (ICCB: In-Cable Control Box); on-board 10.9kW
Charge ports	120 - 240V; 400/800V fast charge port	120 - 240V; 400/800V fast charge port	120 - 240V; 400/800V fast charge port
Charge times <sup>9</sup>	Level 1 AC 10 - 100%: 64 hours 25 minutes Level 2 AC 10 - 100%: 6 hours 45 minutes (11kW) DC fast charge 10 - 80%: 20 mins (350kW); 63 minutes (50kW)	Level 1 AC 10 - 100%: 84 hours 20 minutes Level 2 AC 10 - 100%: 8 hours 45 minutes (11kW) DC fast charge 10 - 80%: 24 mins (350kW); 83 minutes (50kW)	Level 1 AC 10 - 100%: 84 hours 20 minutes Level 2 AC 10 - 100%: 8 hours 45 minutes (11kW) DC fast charge 10 - 80%: 24 mins (350kW); 83 minutes (50kW)
Driving range <sup>10</sup>	370 km	489 km	Land AWD w/ Plus Pkg: 451 km Land AWD w/ Premium Pkg: 451 km Land AWD w/ GT-Line Pkg: 435 km

## Measurements

	Standard Range RWD	Long Range RWD	Long Range AWD
Towing capacity <sup>12</sup>	2,000 lb	2,000 lb	5,000 lb
Cargo capacity (behind 1 <sup>st</sup> row)	2,314 L (81.7 cu. ft.)	2,314 L (81.7 cu. ft.)	2,314 L (81.7 cu. ft.)
Cargo capacity (behind 2 <sup>nd</sup> row)	1,233 L (43.5 cu. ft.)	1,233 L (43.5 cu. ft.)	1,233 L (43.5 cu. ft.)
Cargo capacity (behind 3 <sup>rd</sup> row)	573 L (20.2 cu. ft.)	573 L (20.2 cu. ft.)	573 L (20.2 cu. ft.)

Please visit [kia.ca](http://kia.ca) for full vehicle specifications.

# We've got you covered<sup>13</sup>

Kia engineers are passionate about producing vehicles that are exceptionally well-designed and reliable. Their dedication to quality and attention to detail give Kia the confidence to back every model with an outstanding warranty program.



**5-year/  
100,000 km**

Worry-free comprehensive warranty



**5-year/  
100,000 km**

Limited powertrain warranty



**8-year/  
150,000 km**

Limited EV components warranty



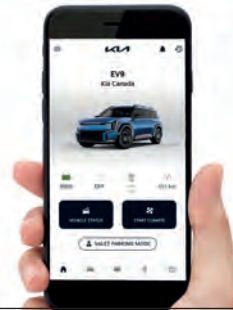
**5-year/  
unlimited km**

24-hour roadside assistance

## KIA Connect

A world of support services that enhance your security, comfort and confidence — every time you get behind the wheel.

Free for the first three years. See features page or visit [kia.ca](http://kia.ca) for full details.



## SiriusXM

With your new vehicle, enjoy access to SiriusXM® satellite radio from anywhere you go - while you're on the road, using the smartphone app, online, or even through your smart TV.

Free for the first 3 months. See features page or visit [kia.ca](http://kia.ca) for full details.



1. None of the features we describe are intended to replace the driver's responsibility to exercise due care while driving and are not a substitute for safe driving practices. Some features may have technological limitations. For additional information regarding the various features, including their limitations and restrictions, please refer to your vehicle's Owner's Manual. 2. Compatible smartphone required. Data rates may apply, please check with your wireless service provider. For wireless charging, certain smartphones may require a wireless charging-compatible case. 3. When equipped with the navigation system, French voice commands may be limited. 4. Kia Connect only available on select models and trims. Specific functionality may vary between models and trims. Destination Search is only available on vehicles with a navigation head unit. Certain functions are only accessible on the smartphone app and/or customer web portal and/or in-vehicle head unit. Service is free for the first three years from the day the vehicle was first registered. Monthly subscription may be applicable after the free period. Please consult your dealer for details. 5. SiriusXM satellite radio service includes 3 month trial and is available in the 10 provinces and three territories of Canada, and the 48 contiguous states of the U.S. Monthly subscription sold separately after three trial months. 6. The Bluetooth word mark and logos are registered trademarks owned by Bluetooth SIG, Inc. 7. Apple, the Apple logo, CarPlay, and iPhone are trademarks of Apple Inc., registered in the US and other countries. App Store is a service mark of Apple Inc. 8. Google, Google Play, Google Maps, and Android Auto are trademarks of Google Inc. 9. To achieve up to 80 percent charge from 10 percent in as little as 24 minutes, a level 3 DC fast charger (350Kw) is required to be used with the vehicle's fast charging port. Charge times indicated may vary depending on various factors including, but not limited to, charging conditions and vehicle model. Fast charging impacts battery durability. 10. Based on EPA estimates. Actual range and mileage will vary depending on various factors including, but not limited to, options, driving conditions, driving habits, battery age, and your vehicle's condition. 11. HomeLink is a registered trademark of Johnson Controls, Inc. 12. When properly equipped. Do not exceed any weight ratings and follow all towing instructions in your Owner's Manual. 13. The Kia 5-year/100,000-km warranty includes various warranties and roadside assistance. Some restrictions apply. For more information call us at 1-877-542-2886 or visit to [kia.ca](http://kia.ca).

We make every effort to ensure that the product information in this brochure is accurate at the time of printing. Occasional changes in production, that affect the standard or optional equipment included on a specific model, may occur after printing which will not be reflected in this brochure. Kia Canada Inc. reserves the right to make these changes without notice or obligation. For this reason, please rely on [kia.ca](http://kia.ca) or your local Kia dealer for the very latest product information. Some vehicles shown may include optional equipment or may not be exactly as shown. Kia Canada Inc., by the publication and dissemination of this material, does not create any warranties, either expressed or implied, to any Kia products. Reproduction of the contents of this material without the expressed written approval of Kia Canada Inc. is prohibited. © Copyright 2024 Kia Canada Inc.



Movement that inspires