

The 2025 Sportage PHEV



Movement that inspires





A 12.3" multimedia interface gives you at-a-glance control of navigation, audio and various vehicle system functions.



Wireless charging keeps your smartphone charged while you're on the road.



Blind view monitor displays the blind spot in the direction your turn signal is indicating.*



USB charging ports for rear passengers are located in the seatbacks ahead of them.



Terrain mode helps provide improved traction and control in mud, snow and sand.



The panoramic sunroof lets the sunshine in for a brighter and airier cabin.

* Available feature. Visit kia.ca for full details.

Exterior colours



Snow White Pearl



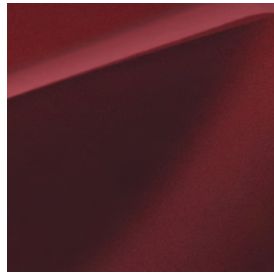
Steel Grey



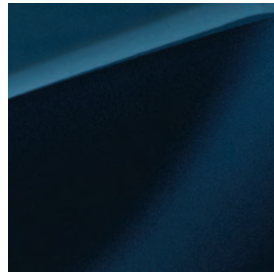
Gravity Grey



Fusion Black



Dawning Red*



Vesta Blue*

* Not available with Carmine Red leather seating.
Some seating, paint and trim configurations may be limited.
Visit kia.ca for full details.

Interior colours



EX Premium, SX
Black quilted leather
(synthetic)



SX
Carmine Red quilted leather
(synthetic)

Wheels



19" alloy wheels

Features

EX PREMIUM

EXTERIOR

- 19" alloy wheels
- Solar glass
- Acoustic laminated windshield
- Heated windshield
- Panoramic sunroof
- Tire mobility kit
- Automatic headlights
- LED MFR headlights
- LED fog lights, positioning lights and daytime running lights
- LED & bulb combination taillights
- Rear spoiler with LED high mounted stop lamp
- Privacy tinted rear door glass
- Gloss black grille
- Power and heated sideview mirrors with signal repeaters
- Body coloured sideview mirrors and door handles
- Rain sensing wipers
- Trailer lighting pre-wiring
- Roof rails

SAFETY

- 8 airbags
- Advanced Forward Collision Avoidance Assist with Junction Turning Function¹
- Rear cross-traffic avoidance assist¹
- Electronic stability control (ESC)
- 4-wheel anti-lock braking system (ABS)
- Hill-assist control (HAC)
- Downhill brake control (DBC)
- Trailer stability assist (TSA)
- Lane keep assist system (LKA)¹
- Lane following assist (LFA)¹
- Blind spot collision avoidance assist¹
- Rear occupant alert¹
- Tire pressure monitoring system (TPMS)
- Immobilizer
- Rearview camera with dynamic guidelines¹
- Front and rear parking sensors¹
- Central door lock
- Low washer fluid warning indicator

TECHNOLOGY

- 12.3" multimedia interface with integrated navigation³
- Smart cruise control (SCC)¹
- Keyless entry
- Smart key with push-button start
- Remote car starter
- Ambient mood lighting
- 6-speaker audio
- HD radio
- SiriusXM[®] satellite radio⁵
- Kia Connect^{2,4}
- USB charging port
- Media input port
- Bluetooth[®] hands-free cell phone connectivity^{2,6}
- Apple CarPlay[®] and Android Auto[™] smartphone integration^{7,8}
- 4.2" TFT LCD Supervision instrument cluster
- Steering wheel-mounted audio controls
- Smart power liftgate
- Electronic parking brake
- 12V cabin power outlet
- Wireless phone charger²
- Auto-dimming rearview mirror
- HomeLink[®] system¹⁰
- Idle stop and go
- Drive Mode Select

INTERIOR

- Heated front seats
- Air-cooled front seats
- Heated rear seats
- Heated steering wheel
- Dual-zone automatic climate control
- Automatic defog system
- Rear climate ventilation
- Quilt-pattern leather seats (synthetic)
- 60:40 split-folding rear seats
- Power adjustable driver's seat
- 2-way driver's seat lumbar support
- Driver's seat memory function
- Power adjustable passenger's seat
- Tilt and telescopic steering wheel
- Leather-wrapped steering wheel
- Power windows with driver's window auto down
- Obstacle-detecting front windows
- Illuminated vanity mirrors
- LED interior lighting
- Alloy pedals
- Deluxe door scuff plates
- Satin chrome interior door handles

SX - adds to or upgrades from EX PREMIUM

EXTERIOR

- Projection LED headlights
- LED taillights

SAFETY

- Parking collision avoidance assist — reverse¹
- Highway drive assist (HDA)¹
- Blind view monitor¹
- Surround view monitor¹
- Remote smart parking assist (RSPA)¹

TECHNOLOGY

- Harman Kardon[®] premium audio system⁹
- 12.3" TFT LCD Supervision instrument cluster

Specifications

Mechanical

Engine type / Electric motor	1.6L Turbo PHEV / Permanent magnet synchronous motor
Configuration	Inline 4 cylinder, GDI
Horsepower (combined)	261 hp
Torque	258 lb-ft.
Transmission	6-speed automatic
Fuel system	Gasoline direct injection (GDI)
Drive type	All-wheel drive (AWD)
Recommended fuel	Regular unleaded

Battery performance

Battery	360 Volt / 88kW (discharge)
Chemistry	Lithium-ion polymer
Energy	13.8kWh
Charge times ¹¹	Level 1 (120V): 11 hours, 10 minutes (15% → 100%) Level 2 (240V): 2 hours (15% → 100%)
All electric range ¹²	Up to 55 km

Measurements

Towing capacity ¹³	Up to 2,000 lb
Fuel tank capacity	42 L
Cargo capacity behind 1 st row (cargo floor raised)	1,855 L (65.5 cu. ft.)
Cargo capacity behind 2 nd row (cargo floor raised)	977 L (34.5 cu. ft.)

Fuel consumption

City and highway combined	2.8 L _e /100km (gasoline and electric) 6.7 L/100km (gasoline only)
---------------------------	--

Please visit kia.ca for full vehicle specifications.

We've got you covered¹⁴

Kia engineers are passionate about producing vehicles that are exceptionally well-designed and reliable. Their dedication to quality and attention to detail give Kia the confidence to back every model with an outstanding warranty program.



**5-year/
100,000 km**

Worry-free comprehensive warranty



**5-year/
100,000 km**

Limited powertrain warranty



**8-year/
150,000 km**

Limited EV components warranty



**5-year/
unlimited km**

24-hour roadside assistance

KIA Connect

A world of support services that enhance your security, comfort and confidence — every time you get behind the wheel.

Free for the first three years. See features page or visit kia.ca for full details.



SiriusXM

With your new vehicle, enjoy access to SiriusXM® satellite radio from anywhere you go - while you're on the road, using the smartphone app, online, or even through your smart TV.

Free for the first 3 months. See features page or visit kia.ca for full details.



1. None of the features we describe are intended to replace the driver's responsibility to exercise due care while driving and are not a substitute for safe driving practices. Some features may have technological limitations. For additional information regarding the various features, including their limitations and restrictions, please refer to your vehicle's Owner's Manual. 2. Compatible smartphone required. Data rates may apply, please check with your wireless service provider. For wireless charging, certain smartphones may require a wireless charging-compatible case. 3. When equipped with the navigation system, French voice commands may be limited. 4. Kia Connect only available on select models and trims. Specific functionality may vary between models and trims. Destination Search is only available on vehicles with a navigation head unit. Certain functions are only accessible on the smartphone app and/or customer web portal and/or in-vehicle head unit. Service is free for the first three years from the day the vehicle was first registered. Monthly subscription may be applicable after the free period. Please consult your dealer for details. 5. SiriusXM satellite radio service includes 3 month trial and is available in the 10 provinces and three territories of Canada, and the 48 contiguous states of the U.S. Monthly subscription sold separately after three trial months. 6. The Bluetooth word mark and logos are registered trademarks owned by Bluetooth SIG, Inc. 7. Apple, the Apple logo, CarPlay, and iPhone are trademarks of Apple Inc., registered in the US and other countries. App Store is a service mark of Apple Inc. 8. Google, Google Play, Google Maps, and Android Auto are trademarks of Google Inc. 9. Harman Kardon is a registered trademark of Harman International Industries, Inc. All rights reserved. 10. HomeLink is a registered trademark of Johnson Controls, Inc. 11. Charge times indicated may vary depending on various factors including, but not limited to, charging conditions and vehicle trim level. 12. Based on EPA estimates. Actual range and mileage will vary depending on various factors including, but not limited to, options, driving conditions, driving habits, battery age, and your vehicle's condition. 13. When properly equipped. Do not exceed any weight ratings and follow all towing instructions in your Owner's Manual. 14. The Kia 5-year/100,000-km warranty includes various warranties and roadside assistance. Some restrictions apply. For more information call us at 1-877-542-2886 or visit to kia.ca.

We make every effort to ensure that the product information in this brochure is accurate at the time of printing. Occasional changes in production, that affect the standard or optional equipment included on a specific model, may occur after printing which will not be reflected in this brochure. Kia Canada Inc. reserves the right to make these changes without notice or obligation. For this reason, please rely on kia.ca or your local Kia dealer for the very latest product information. Some vehicles shown may include optional equipment or may not be exactly as shown. Kia Canada Inc., by the publication and dissemination of this material, does not create any warranties, either expressed or implied, to any Kia products. Reproduction of the contents of this material without the expressed written approval of Kia Canada Inc. is prohibited. © Copyright 2024 Kia Canada Inc.



Movement that inspires