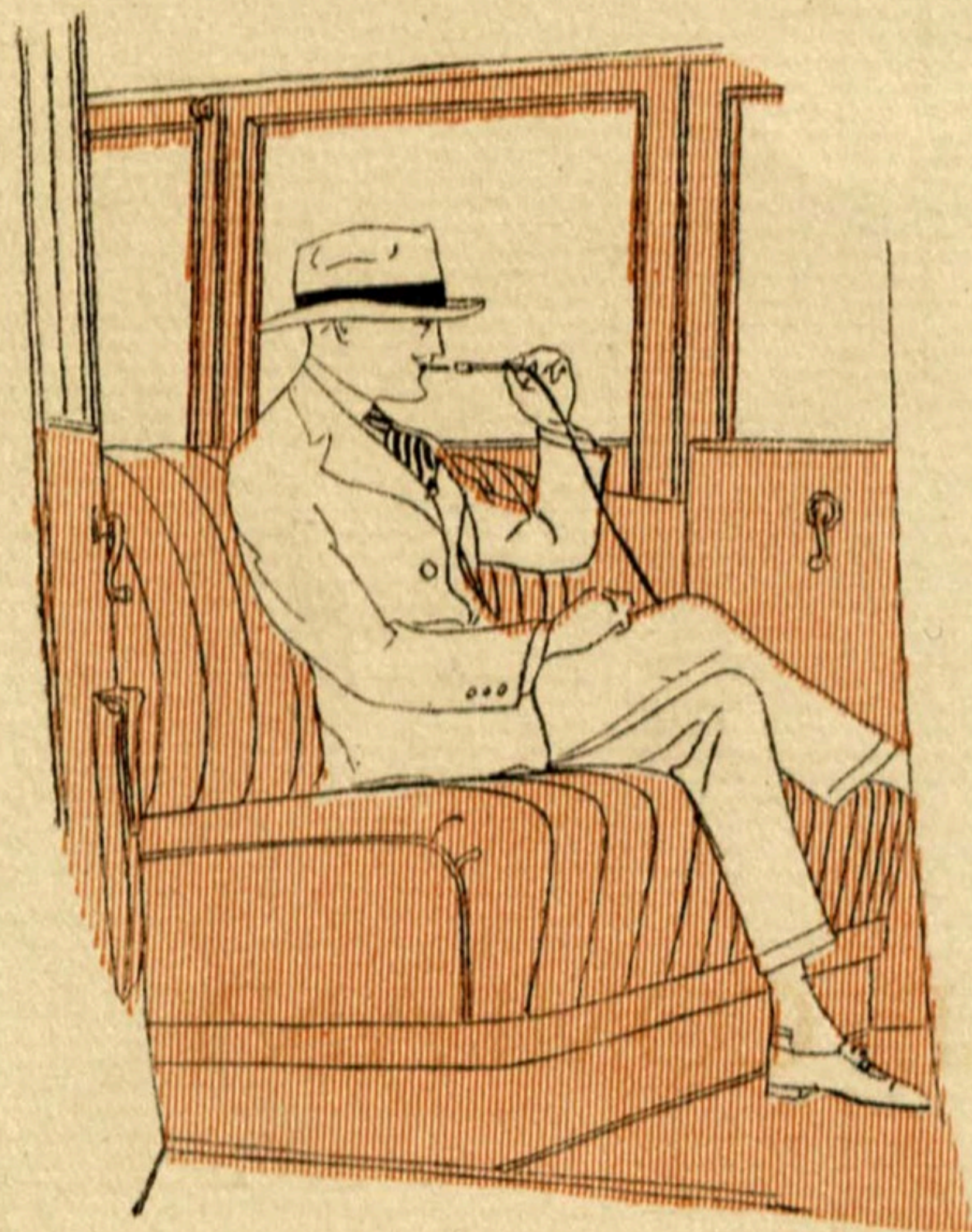


HAYNES MODEL CARS



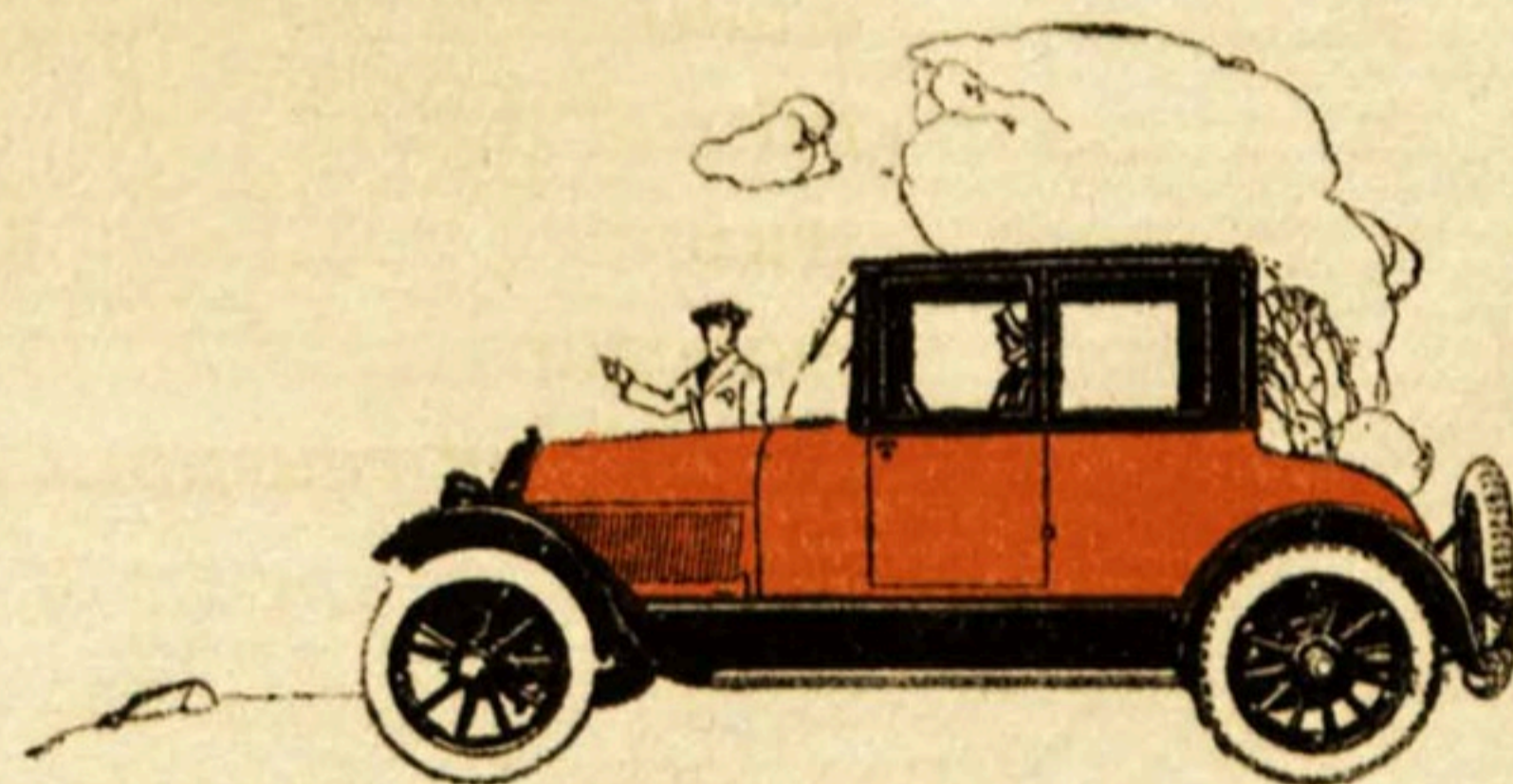
DAINTY conveniences, useful fittings are yours in the new series Haynes model closed cars. Refinement of detail throughout and elegant simplicity mark these master creations of the coach builders' art. The vanity case is solid mahogany and trimmed in dull finish silver.





WIDE, roomy, lounge-like seats upholstered with supreme quality mohair velvet afford delightful riding comfort in the Haynes all-season Sedan—the family car. The mahogany smoking case is handily placed and equipped with an electric lighter.

HAYNES MODEL CARS



Haynes Coupé—The road aristocrat

THE HAYNES AUTOMOBILE COMPANY

Kokomo, Indiana, U. S. A.

*The Haynes Automobile Co. of New York
1715 Broadway, New York City*

*Detroit Haynes Automobile Co., Inc.
1199 Woodward Avenue, Detroit, Mich.*

*The Haynes Motor Car Company
1631 S. Michigan Avenue, Chicago, Ill.*

*Haynes Auto Sales Co., Inc.
Turk at Polk Street, San Francisco, Calif.*

AMERICA'S FIRST CAR



THAT Elwood Haynes, president of The Haynes Automobile Company, invented America's first successful automobile is a noteworthy fact. The original Haynes car is now owned by the United States Government and is exhibited at the Smithsonian Institute, United States National Museum, Washington, D. C. This exhibit is placarded as follows: "Gasoline Automobile built by Elwood Haynes in Kokomo, Indiana, 1893-1894. Successful trial trip made at a speed of six or seven miles per hour, July 4, 1894. Gift of Elwood Haynes, 1910, 262,135." The inspiration that led Elwood Haynes to build the best his ingenuity could conceive is not unlike that which inspires the present-day manufacturers to put character into every Haynes car.

Light Six HAYNES *Light Twelve*

RUGGED MECHANICALLY
BEAUTIFULLY DISTINCTIVE

TWENTY-SIX years of constant progress is the story of The Haynes Automobile Company, America's first and oldest successful manufacturers of motor cars. Because the Haynes was America's First Car, however, is not the only reason why it is chosen today by exacting and discriminating men and women. The today's purchase of a motor car should be guided by its present merits. By comparison the merits of the Haynes model cars are emphatically evident.

So today finds the Haynes far ahead, as it has always been for more than a quarter of a century, manufacturing fine motor cars. Haynes cars are rugged mechanically and beautifully distinctive, being built to a standard and not to a price.

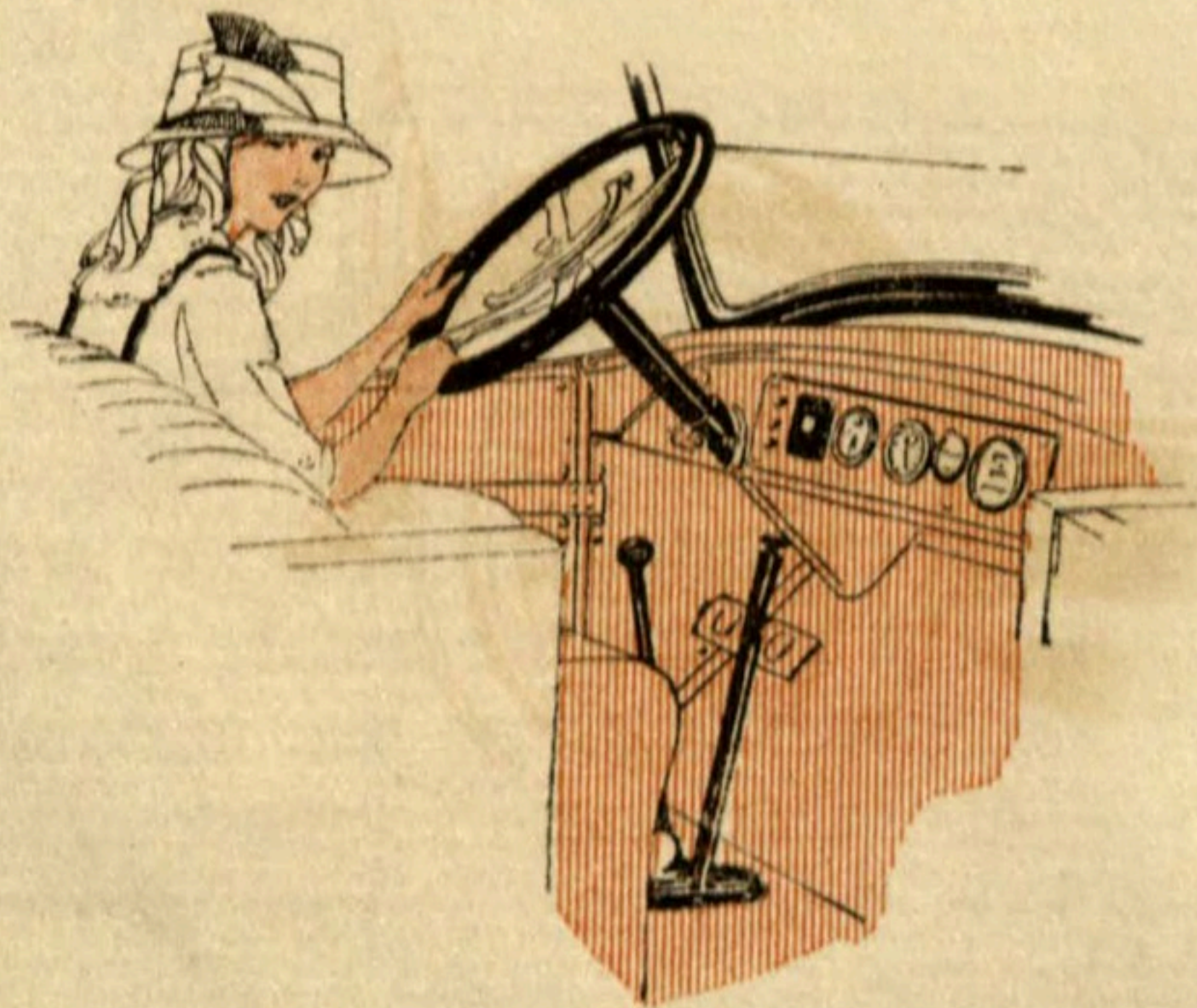
And during all these years, the longest, continuously successful experience possessed by any American motor car manufacturer, vital information has accumulated, giving the

Haynes noted engineers a solid, practical foundation for thought in designing better and more efficient service-giving machinery to carry the master body creations—prides of the famed coach builders.

A Haynes user knows what a Haynes automobile means. There are more than 20,000 in use today. No safer guaranty is there than the tried and tested judgment of such a large number of astute investors. A growing clientele points the way to judge the worth of a company's product.

The new series Haynes model open and closed cars, with their nobility of line, are illustrated on the following pages. Other pictures portray the elegance of interiors and refinement of detail. Character cars are worth your consideration because they are serviceable, dependable, and exquisite in design. The Haynes Automobile Company manufactures cars of this character.

*E*ASE of operation and control is instantly evident in the new series Haynes models. The cowl instruments are conveniently arranged and uniformly embellished. An electric light gives deflected illumination to the Waltham clock and other instruments, adding greatly to night driving comfort.



STRAIGHT, graceful lines distinguish the new series Haynes model cars. They are more stylish than ever before. The broad-arched hood fits snugly to the radiator which is higher and more imposing. Louvers of new design and finely cut at a rakish angle, make the hood more attractive while adding to the motor's efficiency. The fenders contour with the wheel curves and blend harmoniously with the body lines. Soft, resilient seat springs, handsomely tailored with hand-buffed, long-grain leather, assure maximum riding comfort.

There are seven compartments in the touring car, one in each door, two in the tonneau sides, and one between the auxiliary seats in the rear cowl. The latter one has a hinged door made of solid walnut. All these carrying spaces are lined with high-quality, wear-resisting plush. The new series Haynes touring car seats seven comfortably.

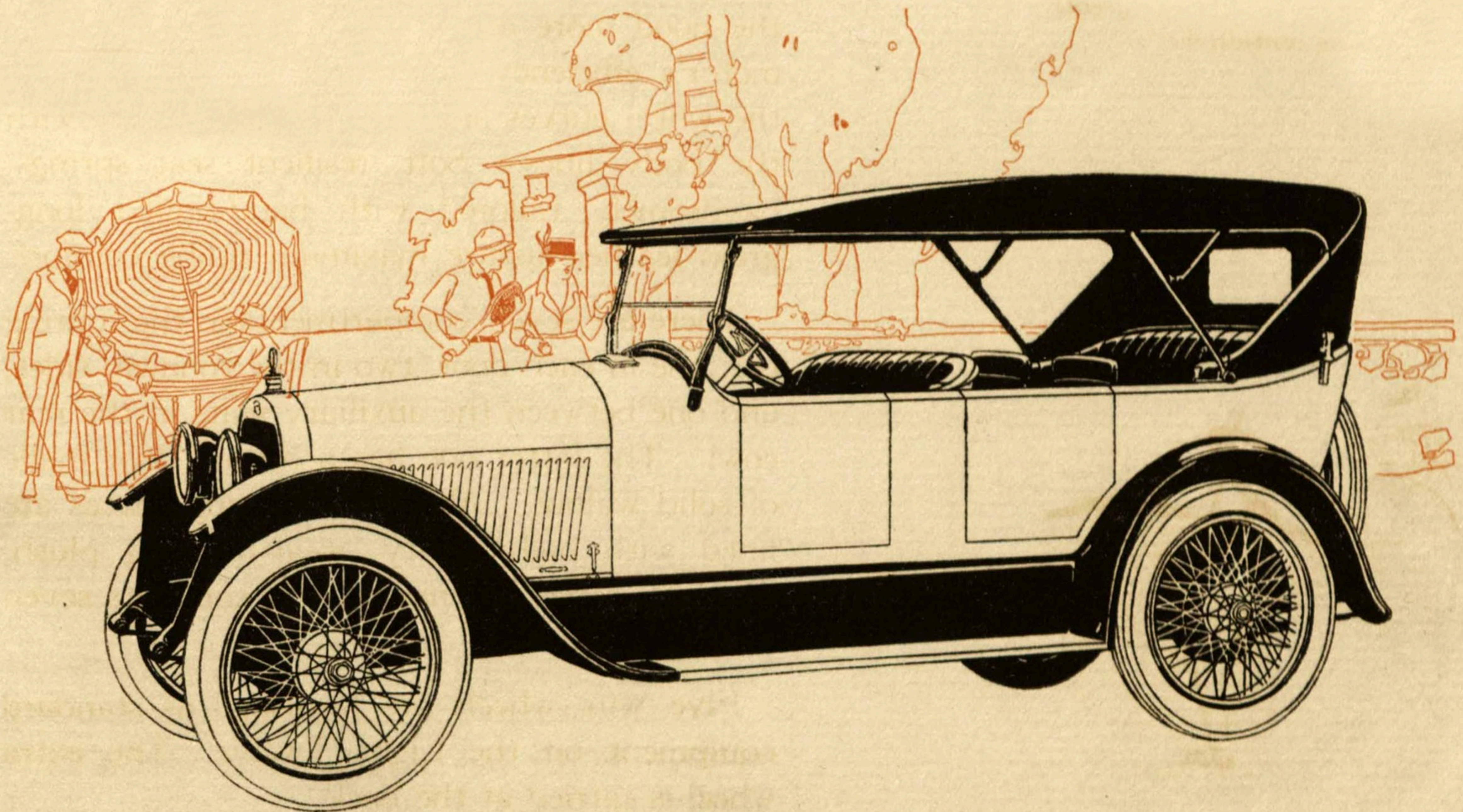
Five wire wheels are furnished as standard equipment on the Light Twelve. The extra wheel is carried at the back.

ALL BODIES MOUNTED ON 127 INCH CHASSIS

MODEL 46 HAYNES TOURING CAR

Seven passengers—twelve cylinders

Five wire wheels standard equipment



G R E A T E R R I D I N G C O M F O R T A T A L L S P E E D S

*T*HERE is a spacious plush-lined compartment in all the seven-passenger open styles. A thermos bottle, or other bits of luggage, may be carried here while touring the country or doing city driving. The compartment door is walnut and enhances the car's beauty.



REFINEMENTS which make for comfort, pride, and satisfaction are exemplified in the many new features. An inclined two-piece windshield affords better vision and lends charm to the appearance. A rubber strip between the two pieces of glass of the windshield keeps out the wind and rain. The top edge of the touring body is beveled all around. There is a smart, wide tonneau cowl which is also beveled. Two large, restful, leather-covered auxiliary seats may be brought quickly into use. When not required, they fold compactly and neatly away. A foot rail gives rest to the feet. The comfort of night riding is augmented by a frosted rosette-design light which effectively illuminates the tonneau. Durable mohair carpet covers the tonneau floor. The top, easily lowered and raised, accentuates the car's character by its correctness. A large size beveled plate glass is securely held in the rear curtain by a nickel-plated frame.

The body of the touring model is aluminum.

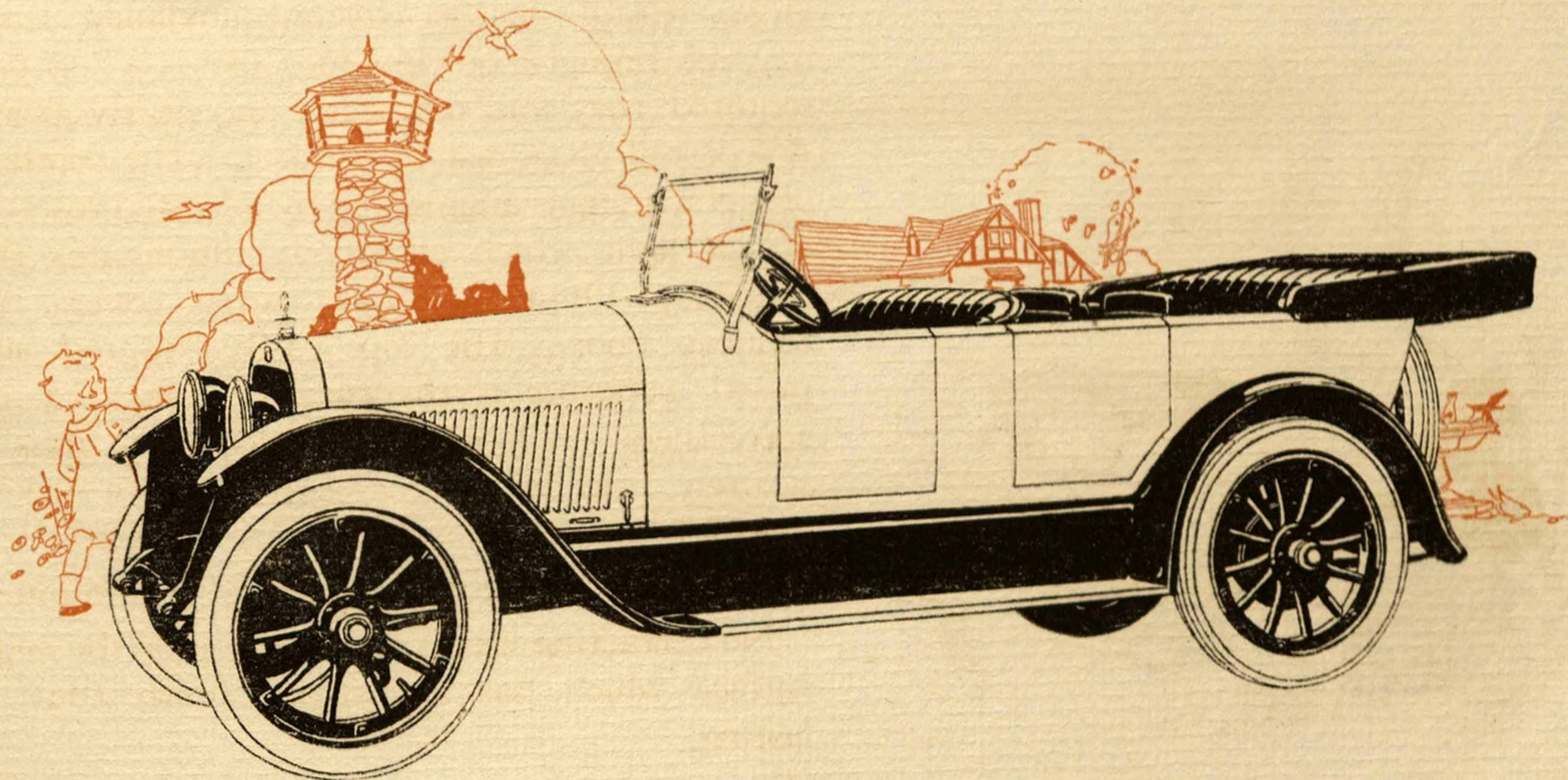
No detracting waves are apparent on the body surface which has a lustrous finish that is lasting.

OPEN CARS FINISHED IN LUSTROUS BREWSTER GREEN

MODEL 45 HAYNES TOURING CAR

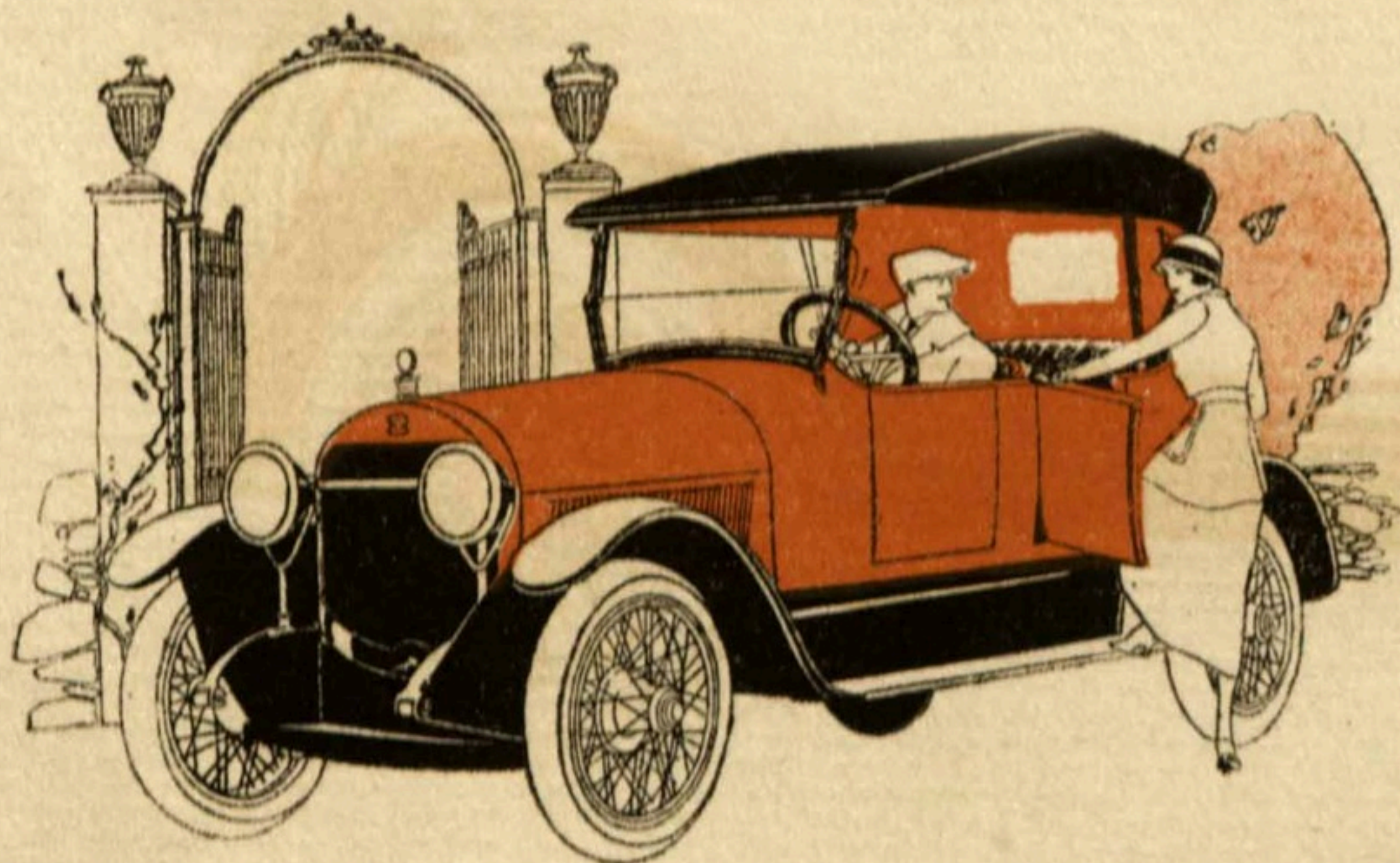
Seven passengers—six cylinders

Wooden wheels standard equipment



LONGEVITY AND STAMINA INHERENT QUALITIES

FOUR doors—a feature of the Haynes companionable Roadster. Low-racy in appearance and ultra-smart is this popular car. Sociability among the four passengers calls for this chummy seat arrangement. A ventilator in the front cowl is finely regulated.



FOUR passengers ride comfortably in the new series Haynes four-door Roadster, the smart popular car of the season. This elegantly proportioned body is spacious and mounted upon the same chassis as the touring car. All the new series styles have a 127-inch wheelbase. This is an excellent and practical length for country driving and for turning in the narrow or busy streets. The long 127-inch wheelbase insures riding balance and means economy of operation—a saving in fuel and tires. Four doors are conveniently arranged for the entrance and exit of passengers. The seats are close enough to each other to give this fascinating Haynes Roadster an air of sociability and companionship. The view from the driver's seat is inspiring. A marked continuity of line is distinctly noticeable where the broad, narrowing hood meets the high, fashionable radiator.

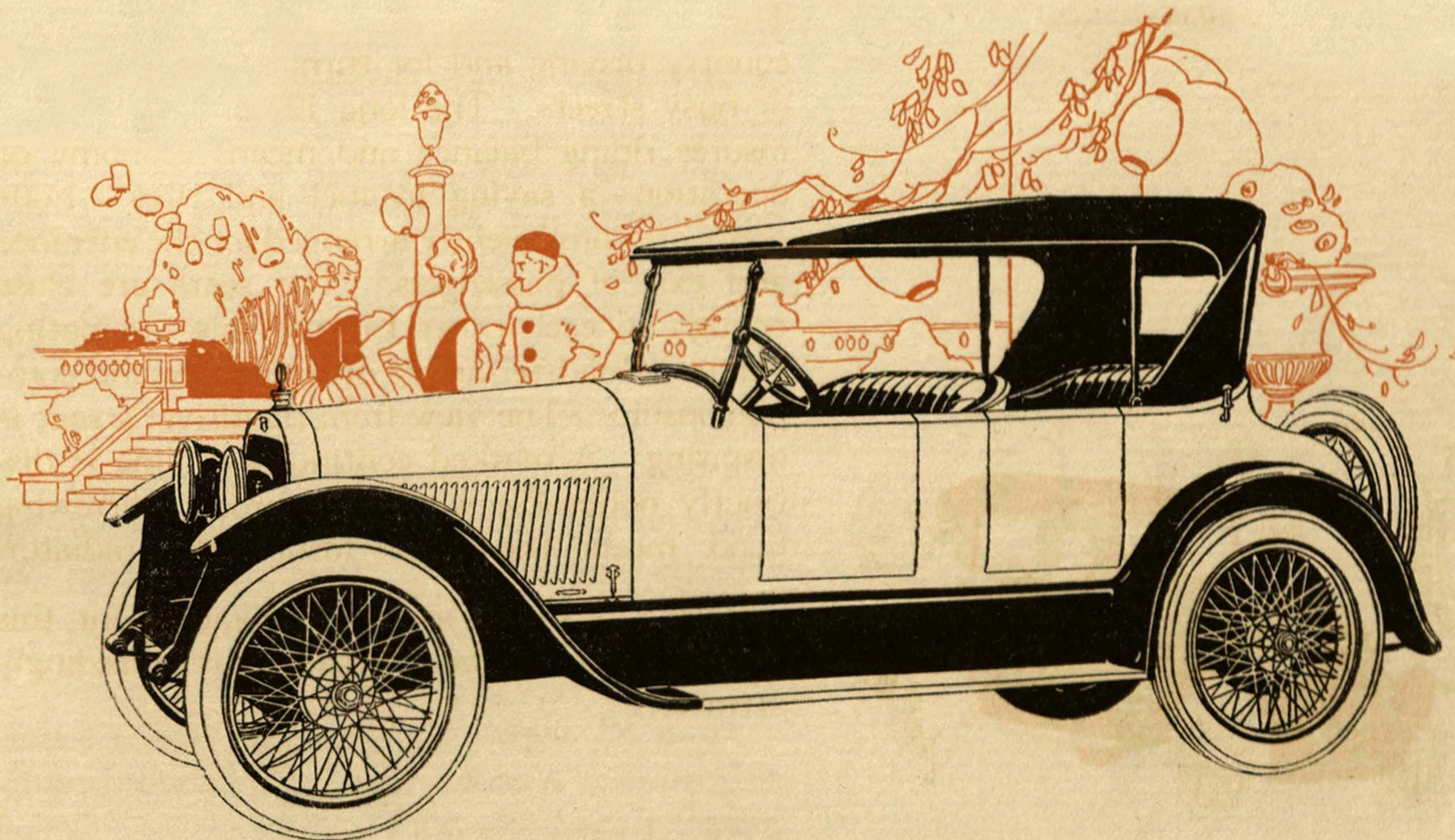
With wire wheels as standard equipment, this new series Light Twelve Roadster is exceedingly attractive.

AMERICA'S GREATEST LIGHT SIXES AND TWELVES

MODEL 46 HAYNES FOUR-DOOR ROADSTER

Four passengers—twelve cylinders

Five wire wheels standard equipment



A RADIATOR greatly beautified by its increased height—a noticeable change in the new series cars. Every radiator bears that distinguished Haynes design and the words "America's First Car." Pride of ownership of such a worthy carrier is proclaimed by thousands.

LONG-GRAIN, hand-buffed leather, laid in French plaits upholsters the new series Haynes Roadster. The back of the rear seat has a natural-grain, solid American walnut panel which is further beautified by an embellished electric light operated by a handily located switch. Four plush-lined compartments, one in each door, afford ample carrying space for small, light parcels. The tonneau floor is covered with mohair carpet, a material which has a shade not easily soiled. The long, low appearance of this distinctive type, with its graceful wheel-forming fenders, tilted windshield and correctly designed top, makes the ensemble an undisputed favorite.

A long ride in the new series Haynes Roadster over the mountain or hilly country roads, or through the congested city traffic, brings out the dominant factors of comfort, safety, and ease of control.

From all angles the Roadster has a smart, sturdy look. Wooden wheels are standard equipment for the Light Six Roadster.

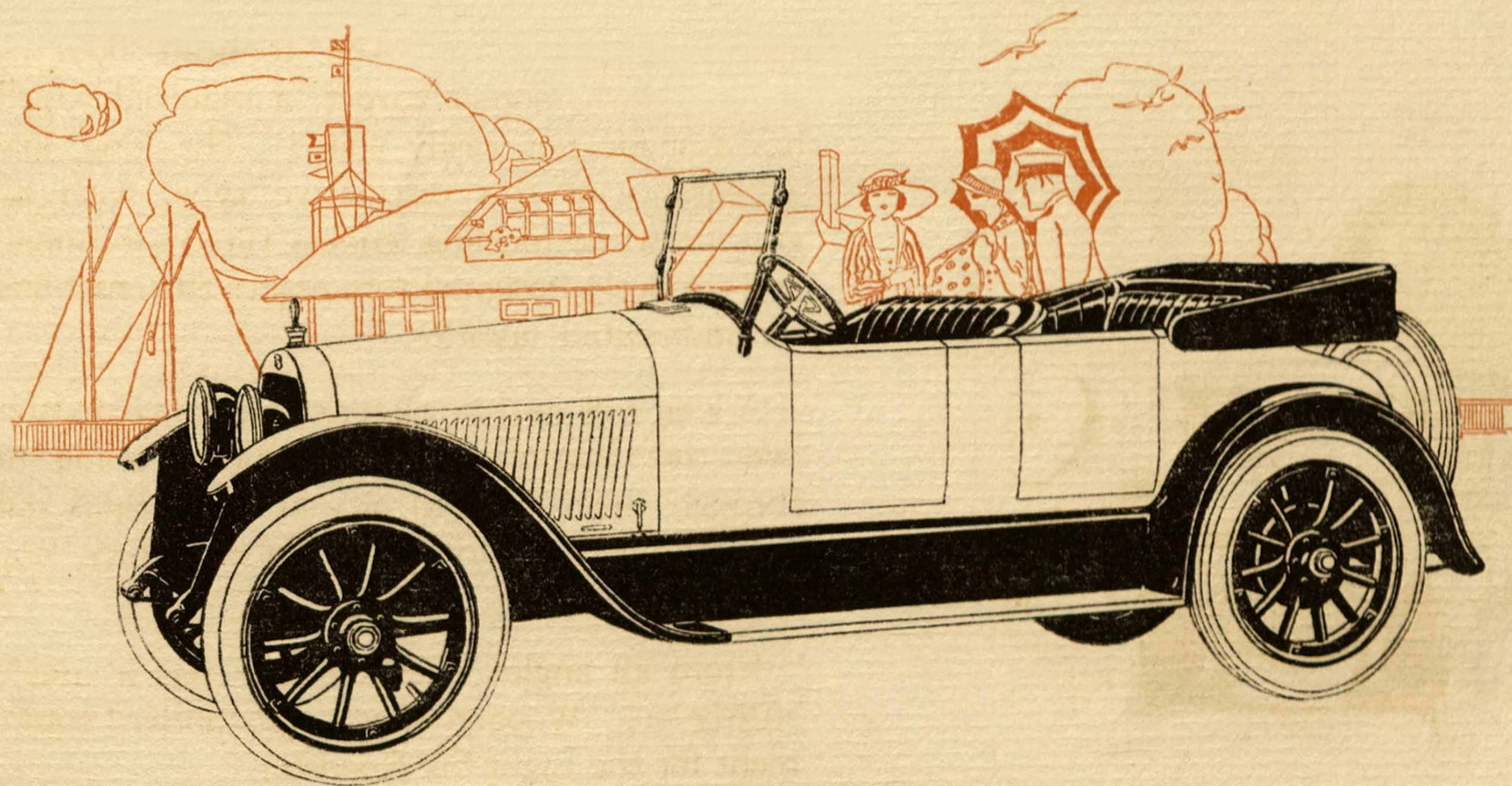


NOISE AND VIBRATION REDUCED TO MINIMUM

MODEL 45 HAYNES FOUR-DOOR ROADSTER

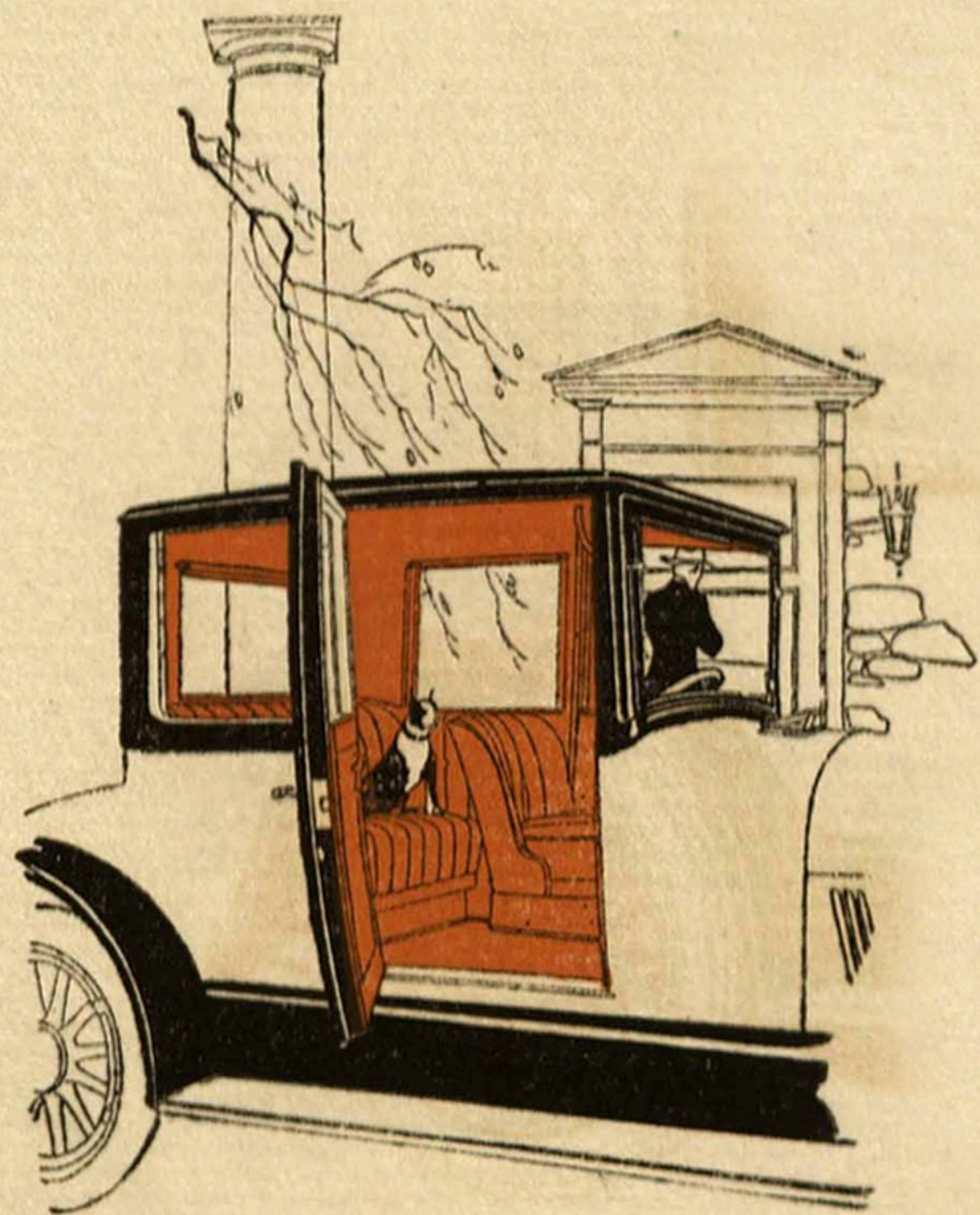
Four passengers—six cylinders

Wooden wheels standard equipment



DISTINCTIVE, LUXURIOUS, AND COMMODIOUS INTERIORS

FOR those who have high motor car ideals—the doctor, lawyer, architect, and business man, or the social woman of taste and appreciation—this Coupé is the choice car. The commodious interiors have abundant atmosphere and are refined artistically.



RICH simplicity marks the style of this season's Haynes Coupé, Sedan, and Limousine, the three closed cars offered. Haynes closed bodies are produced by master coach builders famed for their elegant and fashionable creations. These choice bodies are finely fitted and upholstered, and possess that lure and utility so essential in closed types. The new series Haynes Coupé is the road aristocrat, outwardly dignified and noble, inwardly beautiful, comfortable, and superbly impressive. The glasses are raised and lowered by regulators wrought in dull silver finish. Silver decorated dome and quarter lamps illuminate the interior with a soft and mellow light. The silver finish fittings bear that quaint and famous Mt. Vernon pattern. Silk curtains on quick-acting spring rollers exclude objectionable outside rays. The highest quality mohair velvet upholstery, in plaited style, ornates the new season Haynes closed cars. Four passengers are accommodated in the Coupé by using the auxiliary seat which is trimmed to match. Two carrying spaces are back of the driver's seat. Each door has a large sized pocket. A vanity case completes the appointments. The Coupé, Sedan, and Limousine are cozily warmed by a Perfection heater.

CLASSIC HAYNES BLUE FINISH ON CLOSED STYLES

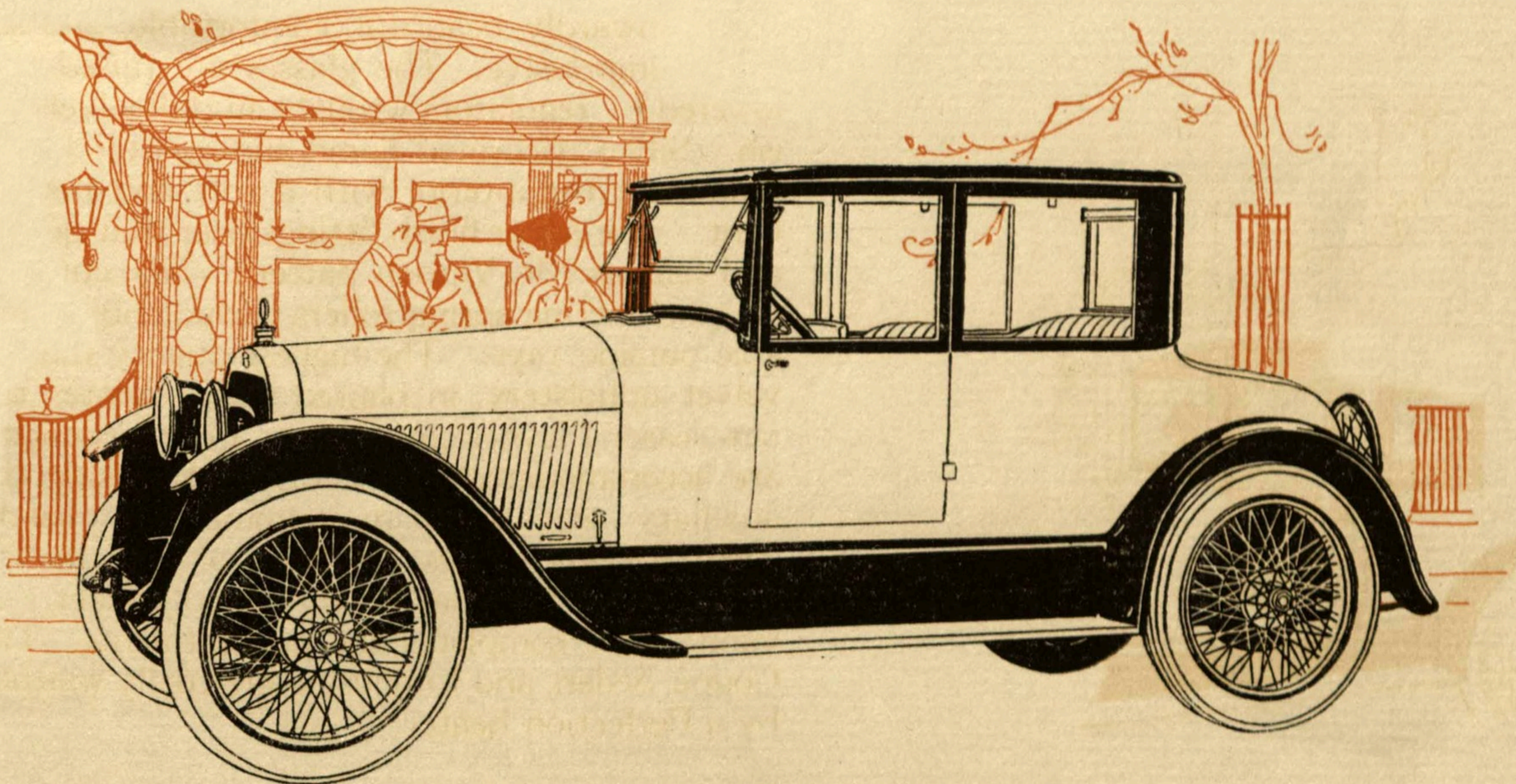
HAYNES COUPÉ—FOUR PASSENGERS

Model 46—twelve cylinders

Five wire wheels standard equipment

Model 45—six cylinders

Wooden wheels standard equipment



MOHAIR VELVET ORNATES CLOSED MODELS

LIKE a cosy room on wheels is the fine Haynes all-season Sedan. In winter the Perfection heater banishes the chill and in summer the lowered glasses admit the invigorating breezes. This is a family car, appropriate for every use—social, touring, and business.



THE all-season new series Haynes Sedan is the all-purpose car for all climates. Because of its commodious interior and seating arrangement, it is better known as the family car. Seven passengers ride in the same compartment, there being no partition between the front and rear seats. Like the Coupé it has completeness and refinement of appointments. Mohair velvet upholstery of the best grade is used throughout. The rear seat is soft and lounge-like and has padded arm rests. The wide, deep, upholstered auxiliary seats are readily raised or lowered. A braided robe cord hangs across the back of the front seat. The ends are made secure by two decorative silver finish fittings. All the silver pieces are of the rare Mt. Vernon pattern. Silk curtains harmonize ideally with the upholstery. The frosted rosette-design dome and quarter lights are silver trimmed. Vanity and smoking cases are complete and made of solid mahogany. There is a handsome pocket in each of the four doors. Another plush-lined compartment is found between the auxiliary seat recesses. Each door may be locked.

The elegance, comfort, and serviceability will satisfy the fastidious as well as the shrewd, discriminating patrons.

THE HAYNES SEDAN—AN ALL-SEASON CAR

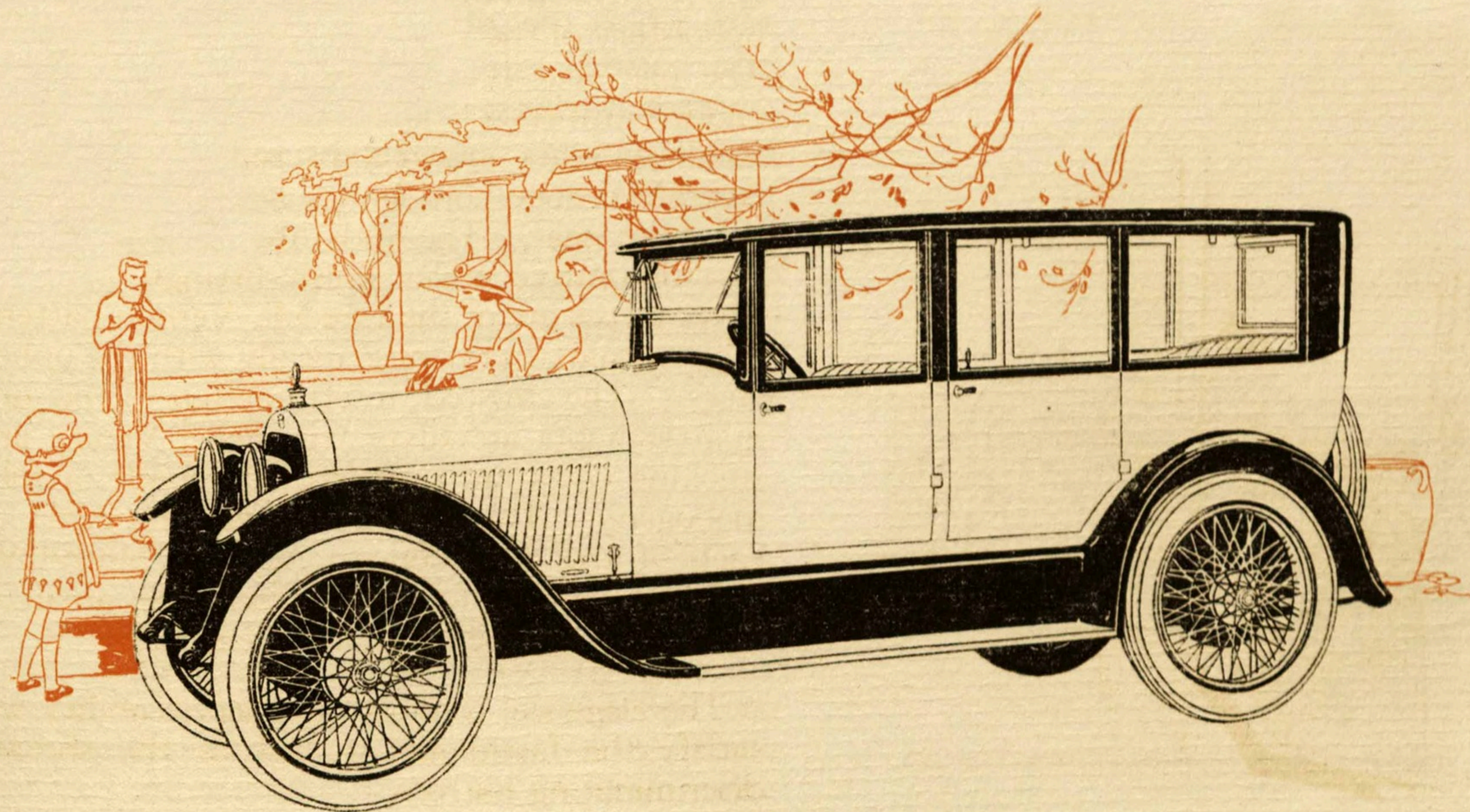
HAYNES SEDAN—SEVEN PASSENGERS

Model 46—twelve cylinders

Five wire wheels standard equipment

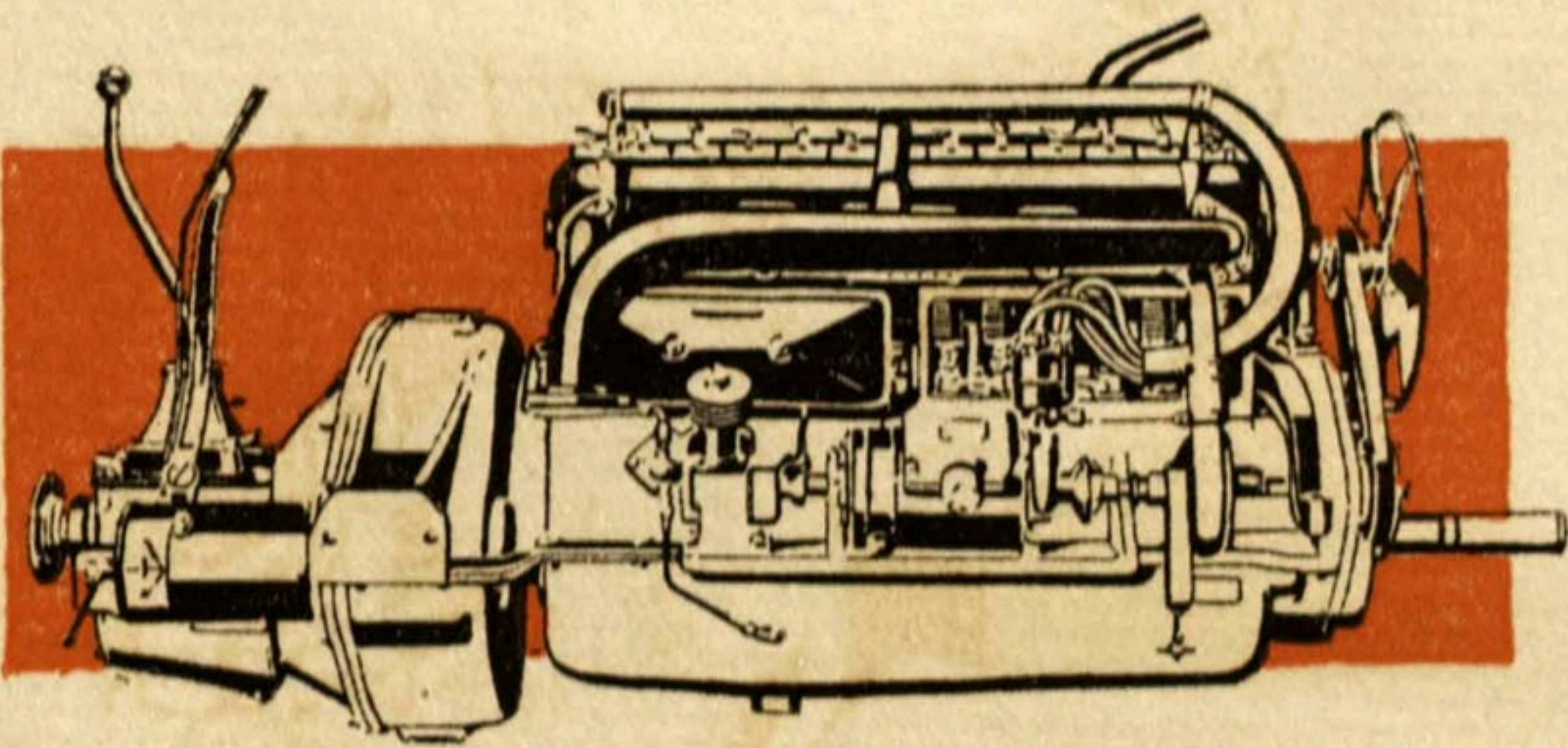
Model 45—six cylinders

Wooden wheels standard equipment



HAYNES LIGHT SIX—A MATCHLESS PERFORMER

A CAR'S greatness, its efficiency, is almost entirely dependent upon its motive power. Haynes motors are designed by master engineers and manufactured by artisans—persons who have made fine motor building their goal. America's Greatest Light Six today stands supreme.



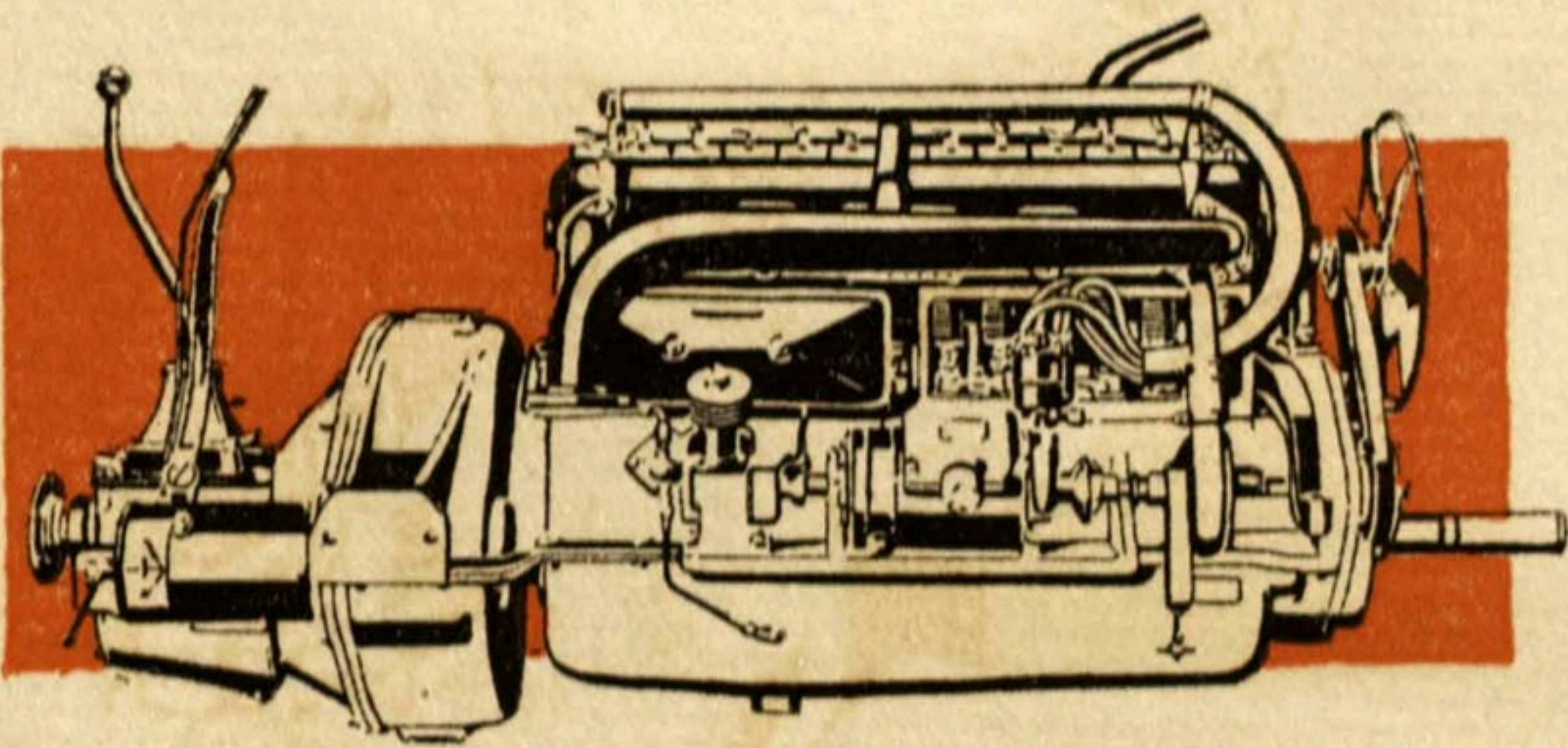
The Haynes Motor—America's Greatest Light Six

NO introduction is needed for the Haynes Light Six motor. Thousands of users know of its marvelous ability. In more than four years it has required no vital change in design. Many minor refinements have added to its already marked efficiency. The carburetor is fastened directly to the cylinder block with which the intake manifold is cast integral and entirely surrounded by a water jacket. Condensation is thus reduced to a minimum and higher gasoline mileage assured. An exhaust manifold heater thoroughly warms the air before it enters the carburetor. The motor is constantly lubricated by the unfailing circulating splash system. A plunger type pump gives a positive oil supply. The oil, being filtered before it is pumped to the working parts, reduces wear. A Bendix starter-drive simplifies the construction and lessens the number of parts.

Through mud, sand, or snow, up hills, on crowded streets, or fashionable boulevards, the Haynes Light Six reveals its abundance of smooth, velvety power—its dependability, stamina, and unusual economy. Because of its consistent, paramount performance, it is deservedly called AMERICA'S GREATEST LIGHT SIX.

HAYNES LIGHT SIX—A MATCHLESS PERFORMER

A CAR'S greatness, its efficiency, is almost entirely dependent upon its motive power. Haynes motors are designed by master engineers and manufactured by artisans—persons who have made fine motor building their goal. America's Greatest Light Six today stands supreme.



The Haynes Motor—America's Greatest Light Six

NO introduction is needed for the Haynes Light Six motor. Thousands of users know of its marvelous ability. In more than four years it has required no vital change in design. Many minor refinements have added to its already marked efficiency. The carburetor is fastened directly to the cylinder block with which the intake manifold is cast integral and entirely surrounded by a water jacket. Condensation is thus reduced to a minimum and higher gasoline mileage assured. An exhaust manifold heater thoroughly warms the air before it enters the carburetor. The motor is constantly lubricated by the unfailing circulating splash system. A plunger type pump gives a positive oil supply. The oil, being filtered before it is pumped to the working parts, reduces wear. A Bendix starter-drive simplifies the construction and lessens the number of parts.

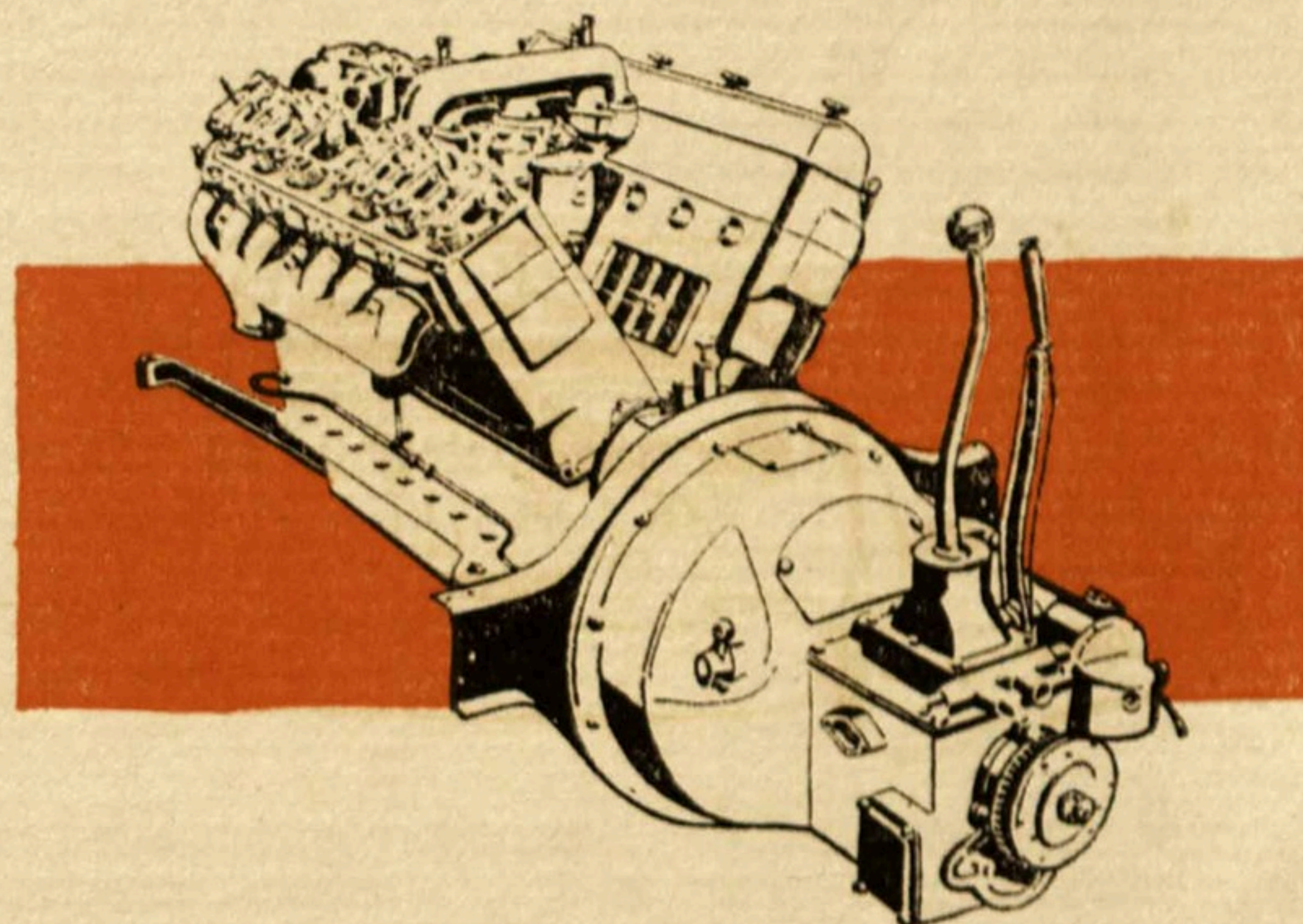
Through mud, sand, or snow, up hills, on crowded streets, or fashionable boulevards, the Haynes Light Six reveals its abundance of smooth, velvety power—its dependability, stamina, and unusual economy. Because of its consistent, paramount performance, it is deservedly called AMERICA'S GREATEST LIGHT SIX.

THE LIGHT TWELVE HAS GREAT FLEXIBILITY

THE interlapping impulses of the Haynes Light Twelve motor produce a continuous flow of power. Gear shifting is not so frequent because of the wide range of flexibility twelve cylinders give. The riding sensation is altogether pleasing. In the congested traffic where it is often necessary to slow down to a mile an hour and quickly pick up to higher speeds, the versatility is readily and appreciably evident. The twelve cylinder motor's abundant reserve power increases the car's longevity. The design being correct, no fundamental changes were needed. Minor improvements in the nature of refinements are noticeable. Lubrication is obtained by means of a high pressure feed system—the surest way known to engineering science. The thermostatic water control gives an even temperature, and adds to the motor's performance. The connecting rod and main crankshaft bearings are die cast and bronze backed. Thus the velvety flowing power of this wonderful motor is assured.

Users attribute the long life of their twelve cylinder Haynes cars to the smoothly running and powerful Light Twelve motor. It is truly **AMERICA'S GREATEST LIGHT TWELVE.**

SMOOTH, velvety power, eager power always under control, with unusual flexibility, is what you get in the Haynes Light Twelve. From a mile an hour or more in crowded traffic to higher speeds on the open country roads without changing gears.



The Haynes Motor—America's Greatest Light Twelve

THE HAYNES LIGHT SIX IN BRIEF

MOTOR—Unit power plant, three point suspension, 50 horsepower, L-head type; cylinders 3½ x 5 inches, cast en bloc.

MODEL 45 TOURING—Double cowl type seven-passenger touring, with disappearing auxiliary seats. Convenient package receptacle in back of front seat.

MODEL 45 ROADSTER—A distinctively individual four-door, four-passenger roadster, exceptionally roomy.

MODEL 45 SEDAN—Seven-passenger, all-season SEDAN; windows drop into body, auxiliary seats fold into backs of front seats.

MODEL 45 COUPE—Four-passengers; disappearing windows make this car ideal for all seasons.

MODEL 45 LIMOUSINE—Seven passengers; auxiliary seats fold away, windows drop into body.

COLORS—All open models: medium-shade Brewster green. All closed models: classic Haynes blue.

UPHOLSTERY—Ultra-fashionable French plaited style, over genuine curled hair and extra quality cushion springs. Open models come in best quality dull-finished leather. Closed cars in serviceable and attractive mohair velvet. Back of front seat in model 45 roadster is upholstered in leather.

ELECTRICAL EQUIPMENT—Haynes Special two-unit Leece-Neville starting and lighting system. Bendix drive starter—starting button on toe-board. Willard battery.

CLUTCH—Single driven dry plate, Borg and Beck patent, with floating Raybestos friction rings; simple and easy to operate; holds under hardest strain.

TRANSMISSION—Selective sliding gear type; three speeds forward, one reverse. Heat-treated nickel steel gears. Gear-shift and emergency brake levers curved back within easy reach.

SPRINGS—Semi-elliptic front and rear, of long-lived, special analysis, heat-treated steel. Exceptional length and width insure easy riding. Rear: 58 inches long, 2¼ inches wide. Front: 39 inches long, 2¼ inches wide.

FRAME—Six-inch channel section side-rails of high-grade steel give great strength without excessive weight, prevent sagging, and hold body rigid over uneven roads. Stanch cross members prevent side sway.

WHEELBASE—All models 127 inches.

COOLING—A large centrifugal pump forces cool water around the cylinders and valve seats. The fan is 15 inches in diameter. A copper honeycomb radiator is used, this being the most efficient type. Overheating is practically impossible with this motor when a proper amount of oil is carried.

LUBRICATION—Circulating splash system. Constant supply of oil assured by plunger type pump, with capacity of one-half gallon per minute at 1000 R. P. M. Oil passes through filter to pump. Oil lever gage on crankcase.

CARBURETOR—Mounted high, and attached directly to cylinder block; elimination of manifold makes better carburetion and consequently greater mileage.

AXLES—Front: I-beam, with wheel spindles and steering knuckles of drop-forged, heat-treated nickel steel. Rear: Haynes three-quarter floating. Pressed steel axle housing carries all weight—heat-treated nickel steel shafts drive car. Noiseless spiral bevel drive gears.

TIRES—Open and closed models: Firestone and U. S. Fabric tires. Size, 34 x 4½ inches.

CURTAINS—Close fitting Haynes design; handy snap fasteners; curtains open with doors. Curtains and top made of durable and attractive Neverleek.

WHEELS—Wood, additional charge for wire wheels.

VENTILATOR—All models equipped with ventilator located in front cowl, easily regulated from driver's seat.

EQUIPMENT—Boyce Moto-Meter, Stewart vacuum gasoline system, speedometer, motor-driven electric horn, complete tool and tire repair kit, eight-day clock, engine-driven tire pump, cowl light, tonneau light, foot and robe rails, automatic circuit breaker, ammeter, single-lock tire carrier, and extra rim. Perfection heaters in all closed cars which are also equipped with Hartford shock absorbers.

SPECIFICATIONS HAYNES LIGHT TWELVE

MOTOR—Unit power plant, three point suspension, 70 horsepower, valve-in-head type; cylinders $2\frac{3}{4}$ x 5 inches, cast six en bloc.

BODIES—**MODEL 46 TOURING**: Double cowl type, seven-passenger touring, with disappearing auxiliary seats. Convenient package receptacle in back of front seat.

MODEL 46 ROADSTER—A distinctively individual four-door and roomy four-passenger roadster.

MODEL 46 COUPE—Four-passenger; disappearing windows make this car ideal for all seasons.

MODEL 46 SEDAN—Seven-passenger, all-season **SEDAN**; windows drop into body, auxiliary seats fold into backs of front seats.

COLORS—Open models: medium-shade Brewster green. Closed models: classic Haynes blue.

UPHOLSTERY—Open models: long-grained, bright-finished, hand-buffed leather, French plaited style, over genuine curled hair and extra quality cushion springs. Back of front seat in roadster upholstered in leather. Closed cars: serviceable and attractive mohair velvet.

ELECTRICAL EQUIPMENT—Haynes Special two-unit Leece-Neville starting and lighting system. Bendix drive starter—starting button on toe-board. Willard battery.

CLUTCH—Single driven dry plate, Borg and Beck patent, with floating Raybestos friction rings; simple and easy to operate; holds under hardest strain.

TRANSMISSION—Selective sliding gear type, three speeds forward, one reverse. Heat-treated nickel steel gears. Gear-shift and emergency brake levers curved back within easy reach.

SPRINGS—Semi-elliptic front and rear, of long-lived, special analysis, heat-treated steel. Exceptional length and width insure easy riding. Rear: 58 inches long, $2\frac{1}{4}$ inches wide. Front: 39 inches long, $2\frac{1}{4}$ inches wide.

FRAME—Six-inch channel section side-rails of high-grade steel give great strength without excessive weight, prevent sagging, and hold body rigid over uneven roads. Stanch cross members prevent side sway.

WHEELBASE—All models 127 inches.

COOLING—A large centrifugal pump forces cool water around the cylinders and valve seats. The fan is 18 inches in diameter. A copper honeycomb radiator is used, this being the most efficient type. Thermostatic control assures an even temperature. Overheating is practically impossible with this motor when a proper amount of oil is carried.

LUBRICATION—Pressure feed system direct to camshaft drive chain, pump shaft bearing, and main bearings, thence to camshaft and to connecting rods through hollow crankshaft. Gear type pump, positive lubrication at all times. Pressure gage on instrument board.

CARBURETOR—Special single Rayfield, mounted in V between cylinder blocks; readily accessible for adjustments; manifold heated by hot water jackets, insuring perfect carburetion and maximum mileage.

AXLES—Front: I-beam, with wheel spindles and steering knuckles of drop-forged, heat-treated nickel steel. Rear: Haynes three-quarter floating. Pressed steel axle housing carries all weight—heat-treated nickel steel shafts drive car. Noiseless spiral bevel drive gears.

TIRES—Open and closed models: Firestone and U. S. Cord tires. Size, 34 x $4\frac{1}{2}$ inches.

CURTAINS—Close fitting Haynes design; handy snap fasteners; curtains open with doors. Curtains and top made of durable and attractive Neverleek.

WHEELS—Five wire wheels standard equipment.

VENTILATOR—All models are equipped with ventilator, located in front cowl, easily regulated from driver's seat.

EQUIPMENT—Boyce Moto-Meter, Stewart vacuum gasoline system, speedometer, motor-driven electric horn, complete tool and tire repair kit, eight-day clock, engine-driven tire pump, cowl light, tonneau light, foot and robe rails, automatic circuit breaker, ammeter, Hartford shock absorbers, wire wheel carrier, and extra wire wheel. Perfection heater in closed cars. Additional light in center cowl of seven-passenger open car.

EVERY Haynes car is zealously watched through every step of its manufacture and assembly. A high standard of perfection is established and every Haynes car must measure up to that standard before it leaves the factory—one of the largest of its kind in America, devoted exclusively to the manufacture of automobiles.

Build well, deal fairly, know no compromise where quality is concerned—such are the principles of The Haynes Automobile Company, manufacturers of America's Greatest Light Sixes and Twelves.

Thousands upon thousands of Haynes cars are in use today, performing consistently. Haynes cars are character cars. Their lasting qualities are inherent because they are built to a standard and not to a price.

THE HAYNES AUTOMOBILE COMPANY, KOKOMO, INDIANA, U. S. A.

Elwood Haynes, *President*

C. C. Cartwright, *Vice President*

A. G. Seiberling, *General Manager*

A. E. Starbuck, *Secretary and Treasurer*

WARRANTY

*Standard Form of Warranty for Motor Vehicles adopted
by National Automobile Chamber of Commerce, Inc.*

THIS IS TO CERTIFY That We, The Haynes Automobile Company of Kokomo, Indiana, warrant each new motor vehicle manufactured by us against defects in material and workmanship under normal use and service, our obligation under this warranty being limited to making good at our factory any part or parts thereof which shall within three months after delivery of such vehicle to the original purchaser be returned to us with transportation charges prepaid, and which our examination shall disclose to our satisfaction to have been thus defective; this warranty being expressly in lieu of all other warranties, expressed or implied, and of all other obligations or liabilities on our part, and we neither assume nor authorize any other person to assume for us any other liability in connection with the sale of our vehicles.

This warranty shall not apply to any vehicle which shall have been repaired or altered outside our own factory in any way so as, in our judgment, to affect its stability or reliability, nor which has been subject to misuse, negligence, or accident, nor to any vehicle made by us which shall have been operated at a speed exceeding the factory rated speed or loaded beyond the factory rated load capacity.

We make no warranty whatever in respect to tires, rims, ignition apparatus, horns or other signaling devices, starting devices, generators, batteries, windshields, speedometers, or other trade accessories inasmuch as they are usually warranted separately by their respective manufacturers.

*The Haynes Automobile Company
Kokomo, Indiana, U. S. A.*

Members of the National Automobile Chamber of Commerce



Designed and written by
the Haynes Advertising
Department. Illustrated
by Charles Daniel Frey
Company, Chicago. Printed
by Rogers & Company,
Chicago

PRICES NEW SERIES HAYNES CARS

"LIGHT SIX"

OPEN

CLOSED

Model 45 Touring 7-passenger	\$2485	Model 45 Coupé 4-passenger	\$3100
Model 45 Roadster four-door 4-passenger	\$2485	Model 45 Sedan 7-passenger	\$3350
Model 45 Limousine	\$4000		

Wooden wheels standard equipment—Wire wheels extra charge

"LIGHT TWELVE"

OPEN

CLOSED

Model 46 Touring 7-passenger	\$3250	Model 46 Coupé 4-passenger	\$3800
Model 46 Roadster four-door 4-passenger	\$3250	Model 46 Sedan 7-passenger	\$4000

Five wire wheels standard equipment

All Open styles finished in medium-shade Brewster green

All Closed styles finished in classic Haynes blue

Prices are f. o. b. Kokomo, and subject to change without notice. The Haynes Automobile Company reserves the right to make changes or improvements at any time without incurring any obligation to install same on cars previously sold.

THE HAYNES AUTOMOBILE COMPANY

KOKOMO, INDIANA, U. S. A.

