



ogive in  
Motor Cars  
1 9 2 0



IP  
6272  
710.76

There's a Touch of Tomorrow in all Cole does Today



---

*There's a Touch of Tomorrow  
in All Cole Does Today*

---

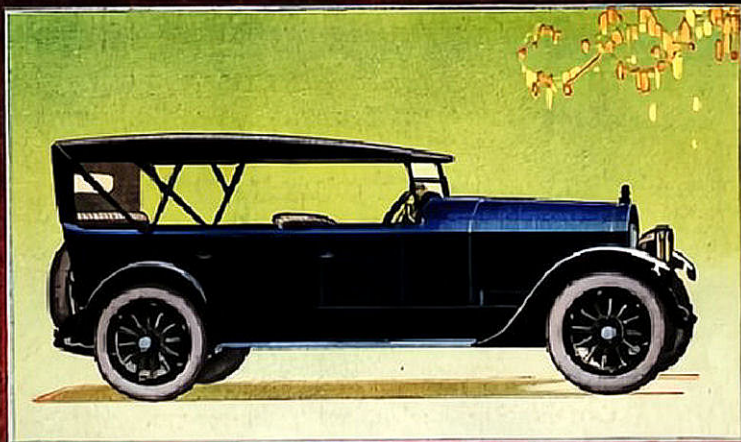
COPYRIGHTED 1920  
COLE MOTOR CAR COMPANY  
INDIANAPOLIS, U. S. A.

**A** FORECAST of the future is the *Cole Aero-EIGHT*. In it ideals which seemed intended for fulfillment only at some distant time have become realities of the present.

The aim of its builders has been to be *first* in design—to lead the way to future improvements by changing staid tendencies and quickening the pulse of motordom to faster progress.

Coming as a distinct departure, the *Aero-EIGHT* has struck a chord of broad appeal. Individuality has been its dominant note. Originality has found expression in its classic contour and its mechanical advancements. It is as gifted in performance as it is radiant in beauty.

Striking in personality, sound in principle, the *Aero-EIGHT* marks a climax in a career devoted to creating the new. It is the herald of an advanced mode—a determining influence in establishing the vogue in motor cars for nineteen twenty.



*Tourster*

## Cole Aero-EIGHT

A FORECAST OF FUTURE FASHIONS  
15,000 MILES ON TIRES



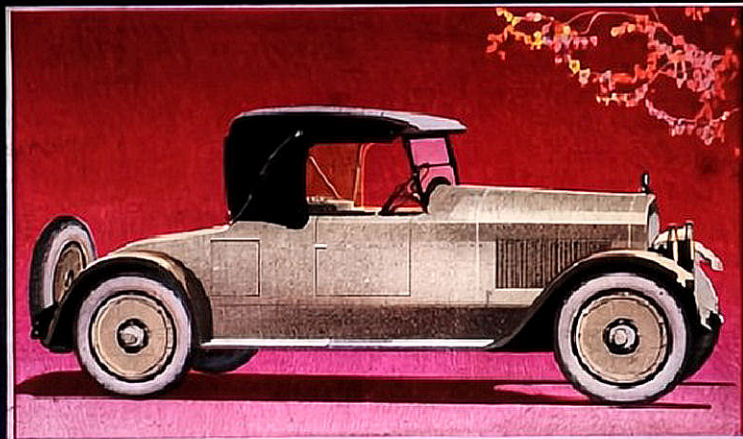
COLE MOTOR CAR COMPANY, INDIANAPOLIS, U.S.A.

*Creators of Advanced Motor Cars*

**TOURSTER**—Model 870—Aerotype, with low beveled panels and high coil. **COLOR**—Coke Deep Blue with blue wheels, black fenders, running board shields and radiator. **SEATING**—Seven-passenger. Solid front seat. Veneering auxiliary seats with extra foot and knee space in back of front seat. Full 46-inch rear seat. **UPHOLSTERY**—Black long grain bright leather. French fold, over genuine curled hair and Ride-Easy springs. **WINDSHIELD**—Full-ventilating, rain-vision type. Sloping design. **TOP AND CURTAINS**—One-man type. Black Pantumite—lined

with gray broadcloth. Large Johnston plate glass window in rear curtain. Gold design door-opening side curtains, which fold conveniently out of the way when not in use. **SPECIAL FEATURES**—Large pockets in each door. Special impediment compartment in back of front seat. Tool space under front and rear seat. Leather robe rail at back of front seat. Foot rest in tonneau. Automatic stop light. Waltham eight-day clock. Wool carpet in tonneau. Extra heavy ilioleum-covered metal bound top and floor boards. Natural finish walnut instrument board. Rubber step pads.

*Wire or Diesel Wheels at Extra Charge. Specifications and Prices Subject to Change Without Notice.*



*Roadster*

## Cole Aero-EIGHT

THE HERALD OF A NEW VOGUE  
UNPARALLELED ROADABILITY



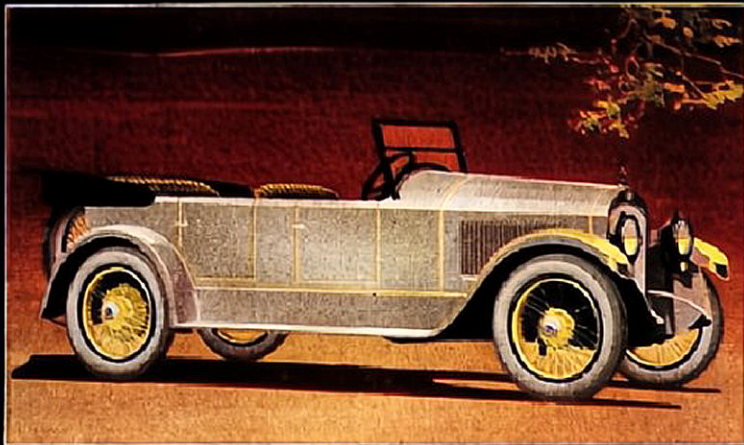
COLE MOTOR CAR COMPANY, INDIANAPOLIS, U.S.A.

*Creators of Advanced Motor Cars*

**ROADSTER**—Model 871—Aerotype, with low panels and high coil. **COLOR**—Aero-gray with gray wheels and fenders, running board shields and radiator. **SEATING**—Two-passenger. **UPHOLSTERY**—Black long grain bright leather. French fold, over genuine curled hair and Ride-Easy springs. **WINDSHIELD**—Full-ventilating, rain-vision type. Sloping design. **TOP AND CURTAINS**—Vintage style top in black. Natural wood bow. Large Johnston plate glass window at rear. Cole design door-

opening side curtains, which fold conveniently out of the way when not in use. **SPECIAL FEATURES**—Large pockets in each door. Special impediment compartment at back of front seat. Tool space under front seat. Spacious dust and waterproof suitcase compartment under rear deck. Golf compartment with opening at right side of car. Waltham eight-day clock. Extra heavy ilioleum-covered metal bound top and floor boards. Natural finish walnut instrument board. Rubber step pads.

*Wire or Diesel Wheels at Extra Charge. Specifications and Prices Subject to Change Without Notice.*



*Sportster*

## Cole Aero-EIGHT

REFRESHINGLY DIFFERENT IN DESIGN  
POWERFUL - SPEEDY - ECONOMICAL



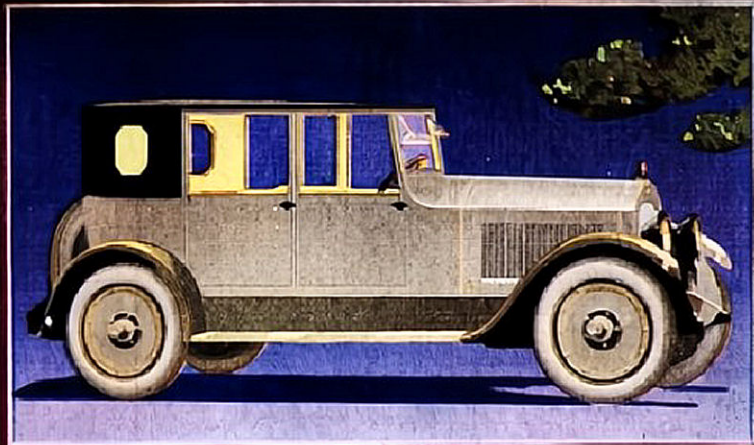
COLE MOTOR CAR COMPANY, INDIANAPOLIS, U.S.A.

*Creators of Advanced Motor Cars*

**SPORTSTER** — Model 872 — Aerotype, with low panels, high cowl and abbreviated rear deck. **COLOR** — Aero-Gray with gray wheels, black fenders, running board shields and radiator. **SEATING** — Four-passenger. Solid front seat. **UPHOLSTERY** — Black long grain bright leather. French fold, over genuine curled hair and Hide-Easy springs. **WINDSHIELD** — Full-ventilating, rain-vision type. Sloping design. **TOP AND CURTAINS** — One-man type. Black Pantasote-lined with gray broadcloth. Large Johnston

plate glass window in rear curtain. Cole design door opening side curtains, which fold conveniently out of the way when not in use. **SPECIAL FEATURES** — Large pockets in each door. Tool space under front and rear seat. Leather robe rail at back of front seat. Foot rest in tonneau. Waltham eight-day clock. Wool carpet in tonneau. Extra heavy linoleum-covered metal bound toe and floor boards. Natural finish walnut instrument board. Rubber strip pads.

*Wire or Disc Wheel at Extra Charge. Specifications and Prices Subject to Change Without Notice.*



*Sportsedan*

## Cole Aero-EIGHT

THE ORIGINAL AEROTYPE MOTOR CAR  
13,000 MILES ON TIRES



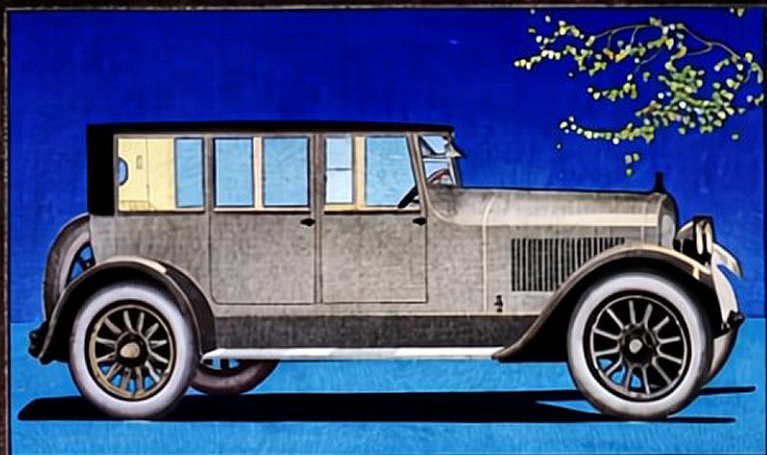
COLE MOTOR CAR COMPANY, INDIANAPOLIS, U.S.A.

*Creators of Advanced Motor Cars*

**SPORTSEDAN** — Model 878 — All-weather aerotype; flush panel construction, with adjustable windows, stationary octagonal rear quarter glass and permanent pillars. **COLOR** — Aero-Gray or American Flag Blue. Steel metal parts and wheels to harmonize. Solid rear quarter panels, rear panel and top in black. **SEATING** — Permanent four-passenger. Full 42-inch rear seat. Solid front seat. **UPHOLSTERY** — In gray or dark blue to harmonize with body. French fold over genuine curled hair and Hide-Easy springs. **WINDSHIELD** — Full-ventilating, rain-vision type, with special protective wiring. **TOP** — Permanent roofed. **SPECIAL FEATURES** —

Adjustable windows and door glass which drop into lower body and door panels, equipped with automatic regulators. Permanent octagonal rear quarter glass to match window at rear. Carrying space under rear seat. Heavy robe cord at back of front seat. Heavy velvet carpeting throughout over linoleum-covered toe and floor boards. Walnut instrument board. Vanity case and smoking outfit. Dome and corner lights. Automatic door switch operating dome light. Perfection floor heater. Double door handles with Sargent locks. Waltham eight-day clock. Silk window shades to match upholstery. Rubber strip and floor pads. Foot rest in tonneau. Arm rests at sides of rear seat.

*Wire or Disc Wheel at Extra Charge. Specifications and Prices Subject to Change Without Notice.*



*Sportosine*

## Cole Aero-EIGHT

EXCLUSIVE DESIGNS-ADVANCED ENGINEERING  
GREATER PERFORMANCE EFFICIENCY



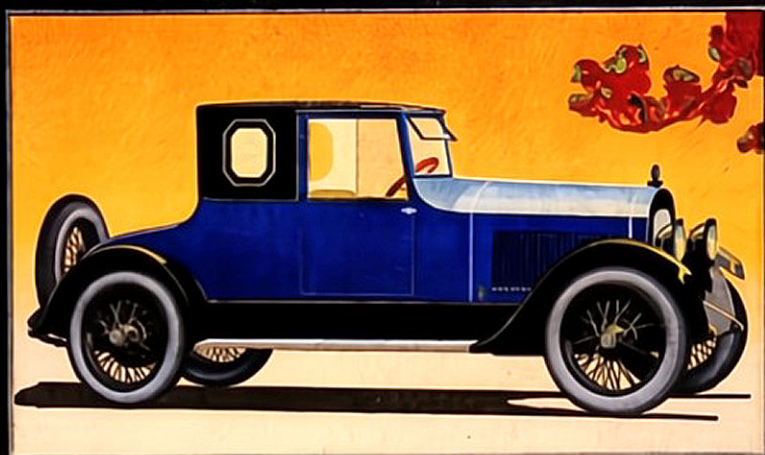
COLE MOTOR CAR COMPANY, INDIANAPOLIS, U.S.A.

*Creators of Advanced Motor Car Designs*

**SPORTOSINE—Model 879—All-season aerotype:** flush panel construction, with adjustable windows and glass partition between front and rear compartments; permanent pillars. **COLOR—Aero-Gray or American Flag Blue** with fenders, running board shields, wind scoop, radiator and wheels to harmonize. Solid panels at rear and top in black. **SEATING—**Six-passenger with two auxiliary cab seats. **UPHOLSTERY—**Gray or dark blue to harmonize with body. French fold, over genuine curled hair and Ride-Easy springs. **WINDSHIELD—**Full-ventilating, rain-vision type with special protective visor. **TOP—**Per-

manent roofed. **SPECIAL FEATURES—**Adjustable windows, door glasses and glass partition equipped with automatic regulators. Heavy robe cord at back of front seat. Foot pillow in tonneau. Ebony finish instrument board and moldings. Heavy velvet carpeting throughout over linoleum-covered toe and floor boards. Vanity case and smoking outfit. Dome and corner lights. Automatic door switch operating dome light. Perfection heater. Double door handles with Sargent locks. Waltham eight-day clock. Silk window shades to match upholstery. Rubber step and floor pads. Arm rests at sides of rear seat. Autophone.

*Wire or Dotted Wheels at Extra Charge. Specifications and Prices Subject to Change Without Notice.*



*Sportcoupe*

## Cole Aero-EIGHT

THE CRITERION OF MOTOR CAR FASHIONS  
A NEW AUTOMOTIVE ACHIEVEMENT



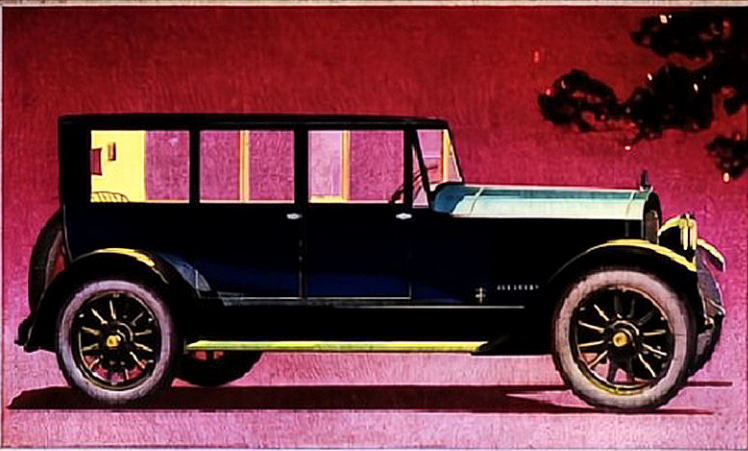
COLE MOTOR CAR COMPANY, INDIANAPOLIS, U.S.A.

*Creators of Advanced Motor Cars*

**SPORTCOUPE—Model 883—All-season aerotype:** flush panel construction, with adjustable door glasses and permanent pillars. **COLOR—Aero-Gray or American Flag Blue.** Sheet metal parts and wheels to harmonize. Solid rear quarter panels, rear panel and top in black. **SEATING—**Four-passenger with auxiliary seat folding up under cowl. Driver's seat sets slightly forward. **UPHOLSTERY—**In gray or dark blue to harmonize with body. French fold over genuine curled hair and Ride-Easy springs. **TOP—**Permanent roofed. **WINDSHIELD—**Full-ventilating, rain-vision type, with special protective

visor. **SPECIAL FEATURES—**Adjustable door glasses equipped with automatic regulators. Permanent rear quarter glasses. Impediment compartment at back of driver's seat. Luggage space under rear deck. Linoleum-trimmed toe and floor boards, covered with heavy velvet carpet. Walnut instrument board. Vanity case and smoking outfit. Dome and corner lights. Automatic door switch operating dome light. Perfection floor heater. Double door handles with Sargent locks. Waltham eight-day clock. Silk window shades to match upholstery. Rubber step and floor pads. Door pockets.

*Wire or Dotted Wheels at Extra Charge. Specifications and Prices Subject to Change Without Notice.*



*Tourosine*

## Cole Aero-EIGHT

INIMITABLE NEW BODY CONCEPTIONS  
UNPARALLELED RIDING COMFORT



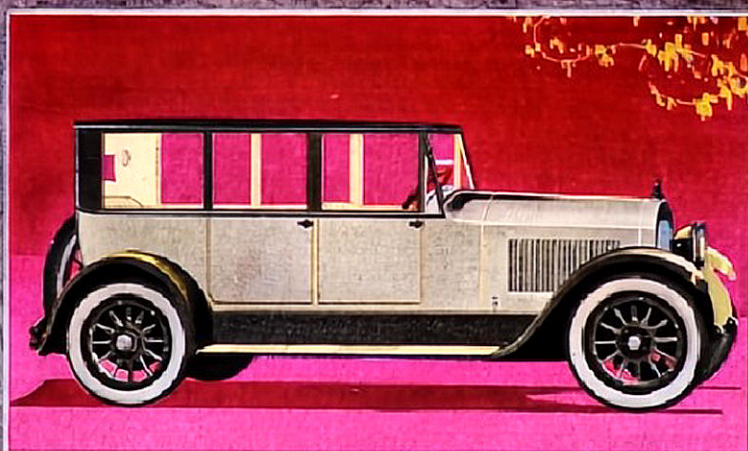
COLE MOTOR CAR COMPANY, INDIANAPOLIS, U.S.A.

*Creators of Advanced Motor Car Designs*

**TOUROSINE**—Model 884—All-season prototype; flush panel construction with adjustable windows, and glass partition between rear and front compartments. **COLOR**—Aero-Gray combination or American Flag Blue. **TOP** in black. **SEATING**—Full seven-passenger. Solid front seat. Two completely disappearing auxiliary chairs. Full 46-inch rear seat. **UPHOLSTERY**—In rear compartment to match color of body. Driver's seat in long grain, hand-tufted, bright leather. **WINDSHIELD**—Special Cole design, vacuum storm-proof type, clear vision, full ventilating. **TOP**—Permanent roofed. **SPECIAL FEATURES**—Door glasses, rear quarter panels and central glass

partition equipped with regulators. Double door handles with Surgeant locks. Corner and dome lights. Automatic door switch operating dome light. Carrying space under front and rear seats. Vanity case and smoking outfit. Natural mahogany instrument board and moldings. Arm and foot rests in tannau. Silk window shades. Perfection floor heater. Waltham eight-day clock. Heavy robe cord. Rubber step and floor pads. Autophone. Linoleum trimmed toe and floor boards, covered with heavy velvet carpeting. Door pockets. **TOURSIEDAN**—Model 885. Same as above but without adjustable partition between front and rear compartment and autophone equipment.

*Wire or Direct W/heels at Extra Charge. Specifications and Prices Subject to Change Without Notice.*



*Toursedan*

## Cole Aero-EIGHT

ADVANCED CREATIONS IN MOTOR CARS  
FEATURES NOWHERE ELSE OBTAINABLE



COLE MOTOR CAR COMPANY, INDIANAPOLIS, U.S.A.

*Creators of Advanced Motor Cars*

**TOURSIEDAN**—Model 885—**DESIGN**—All-season prototype; flush panel construction; adjustable windows; permanent pillars. **COLOR**—Aero-Gray combination or American Flag Blue with fenders, running board shields, windcoops, radiator and wheels to harmonize. **TOP** in black. **SEATING**—Full seven-passenger. Solid front seat. Two completely disappearing auxiliary chairs. Full 46-inch rear seat. **UPHOLSTERY**—Mohair velvet in gray or dark blue to harmonize with body, over genuine curled hair and Hide-Easy springs. **WINDSHIELD**—Special Cole design, vacuum storm-proof type. Clear vision and full ventilating under all conditions. **TOP**—Perma-

nent roofed. **SPECIAL FEATURES**—Adjustable door glasses and rear quarter panels equipped with regulators. Double door handles with Surgeant locks. Corner and dome light. Automatic door switch operating dome light. Carrying space under front and rear seat. Vanity case and smoking outfit. Natural mahogany instrument board and moldings. Arm rests at sides of rear seat. Foot rests in tannau. Silk window shades to match upholstery. Perfection floor heater. Waltham eight-day clock. Heavy silk robe cord at back of front seat. Rubber step and floor pads. Linoleum trimmed toe and floor boards. Heavy velvet carpeting throughout. Pockets in front door.

Personal inspection and  
thorough demonstration  
of all *Cole Aero-EIGHT*  
models will be conven-  
iently arranged by