



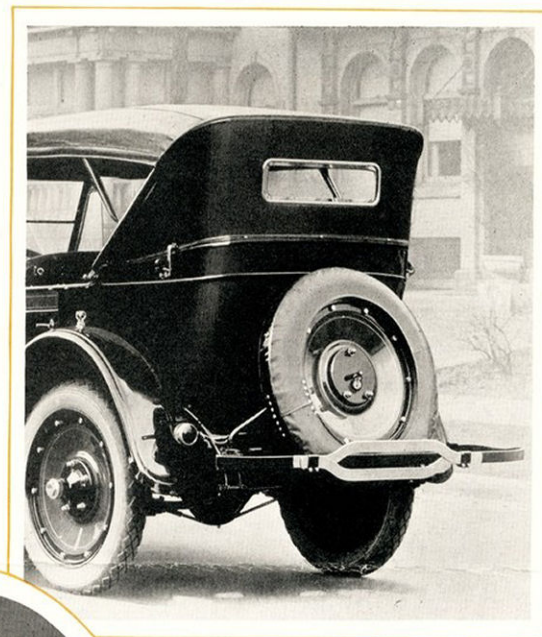
The
AUBURN
SPORT



Nickel lamps and radiator, and the nicked front bumper give the front end of the Auburn Sport car a brightness that is most attractive. The windshield wings on the Auburn Sport car are built-in. There are no cumbersome clamps.

From whatever angle you look at this Auburn Sport model it is racy and distinguished. The front view is narrow, low and suggestive of speed.

AUBURN AUTOMOBILE CO.
AUBURN, INDIANA

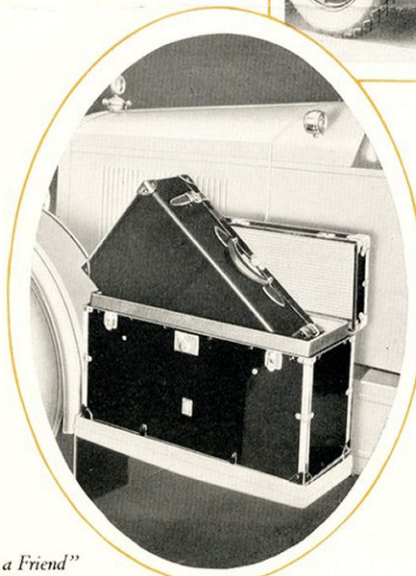


Bumpers front and rear, parking light, extra tire are part of the regular equipment on the Auburn Sport car. On each side of the car is a touring trunk. For better protection from dust and dirt the trunk contains a suitcase.

THE nicked radiator and nicked lamps greatly enhance the beauty of the car. The bumper also nicked adds to the brightness of the front.

The built-in windshield wings are not merely an attached extra, but a part of the car. They add great convenience and comfort in driving. When turned out they protect the driver from wind and rain, and when turned in on a hot day they provide a vigorous ventilation for the front compartment of the car.

The disc wheels and unusually large tires, combined with the low center of weight, give the car an appearance of great ruggedness and durability. In every way it is satisfying to the eye.



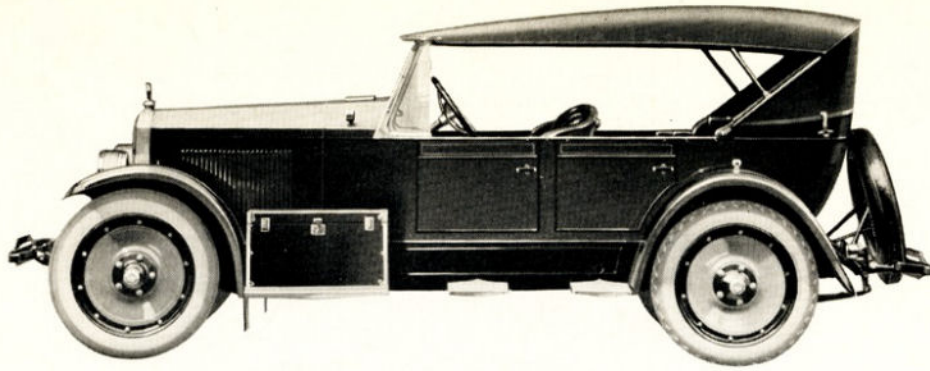
ON each side of the Sport model is a trunk containing a suitcase. The contents of these trunks are as fully protected from grime as it is possible to protect anything carried in a motor car. The trunks are highly finished and increase the beauty of the car.

The upholstery in the Auburn Sport model is covered with a beautiful dual-tone Spanish leather of a light brown shade to harmonize with the top and body finish, making a car of the utmost individuality and distinction inside as well as out.

The Sport model is equipped with a cowl ventilator. There is an extra fine instrument board and other extra-value features too numerous to mention.

"Once an Owner—Always a Friend"





Sport Model Specifications

Body—Four passenger Sport type with high cowl, low sides, wide paneled doors, low inclined cushions, beveled foot board in rear compartment, forming storage space for side curtains. Cowl ventilator. Polished aluminum body rails. Beading around body and doors. Instrument board and cabinet in rear compartment inlaid walnut. Narrow aluminum hood ledge between hood and body.

Upholstery—Genuine hand buffed, Dual-tone Brown Spanish leather. Deep cushions and high backs.

Finish—Standard color—Beige Brown with black fenders and flashings with lighter shade of Greenish Brown in door panels and Disc wheels, with Scarlet, Black and Gold striping in door panels and wheels.

Windshield—Exclusive Auburn design. Windshield wings built integral with windshield brackets. All metal parts made of polished Sterlite, will not rust or corrode. Lower glass stationary.

Top—Olive Drab Mohair top, lined. Nickel-plated slat irons and walnut finished exposed bows. Top envelope and top rest irons furnished. Side curtains carried in compartment back of front seat. Traffic curtain on driver's side.

Radiator—Standard radiator with nickel-plated brass shell, and bar filler cap with moto-meter.

Fenders—Individual one-piece crown fenders. Polished aluminum steps and trunk brackets.

Trunks—Two black trunks, with nickel trimmings, one on each side of car, each trunk fitted with suitcase and dust cover.

Wheels—Disc wheels. 32x4½ Cord Tires.

Lights—Large size barrel headlights, full nickel finish. Non-glare lenses. Cowl lights, and tail lamp of barrel type to match. Parking light on left rear fender.

Snubbers—Front and rear.

Additional Equipment—Spring duplex bumpers, front and rear, muffler cut out, rim wind clock, deep tone electric motor driven horn, magnetic type speedometer driven from transmission. Complete set of tools carried in special compartment of front door; jack, pump and tire outfit.

Chassis—This superb body is mounted on the standard Auburn chassis which is constructed of tried and proven units and is one of the most highly developed in its class. Twenty-three years of improvement have produced remarkable efficiency and dependability.

This folder is written and illustrated to describe the Sport body type only. For chassis specifications and mechanical detail, see the Auburn catalog which can be obtained from any Auburn dealer or will be gladly sent from the factory upon request.

There is a special piece of literature on each Auburn model which includes the 6-43 5-passenger Touring Car and the 6-43 Touring-Sedan. Both of these models are mounted on the new 6-43 chassis—compact and economical cars at low prices.

The standard Auburn models include the 5-passenger Touring Car, 4-passenger Sport, described in this folder, the Brougham and the 7-passenger Sedan, each a superb model of its type.

For prices on any Auburn model see your Auburn dealer or ask for current price list.

AUBURN AUTOMOBILE COMPANY, Auburn, Indiana

