

# TOYOTA *LAND CRUISER*

FJ45  
135 HP

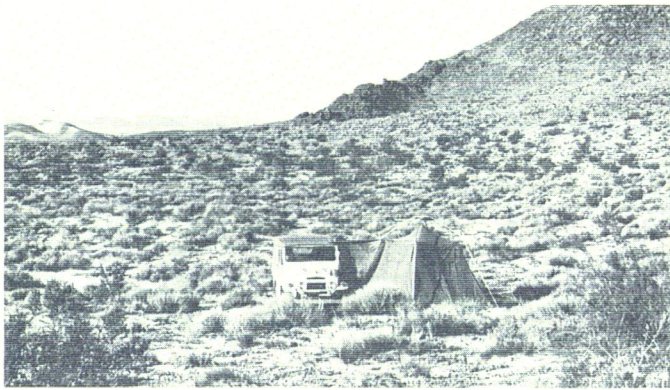




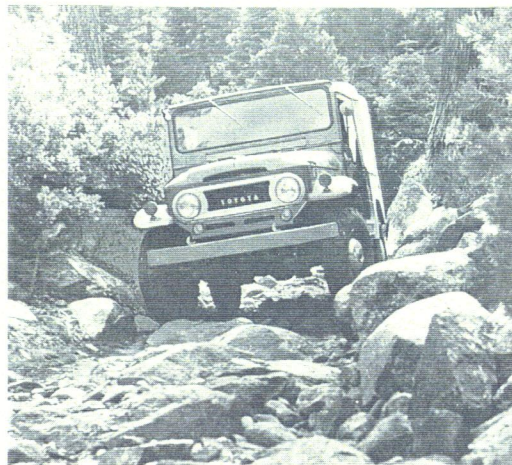
Toughest in the world! Whatever the job, the Toyota Land Cruiser works harder, faster, more reliably than any other 4-wheel drive utility vehicle you can find!



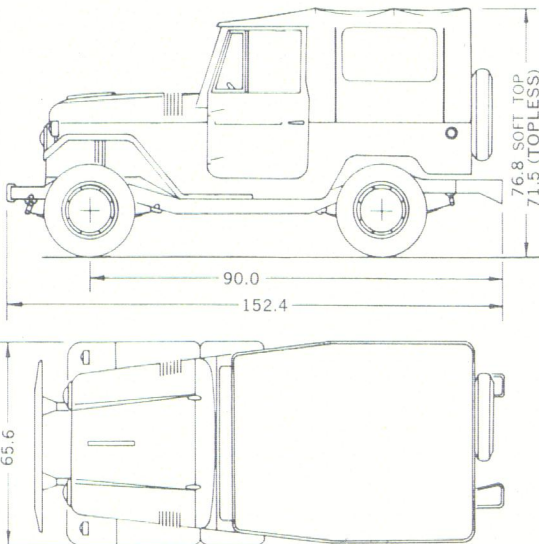
Turnpike speed! Drive all day at 85 MPH on the highway. When you run out of road, don't stop, just switch into 4-wheel drive and keep on going!



Mountain, desert, rock or river bed—Toyota takes you where you want to go! Drive through swamp, over sand or snow, up steep 67% grades to those out-of-the-way, hard-to-get-to fishing, hunting and camping grounds!



Loaded for bear! With the rear seats folded, you can load the Toyota Land Cruiser with more than a half ton of equipment and still have room up front to seat three husky men comfortably!



## SPECIFICATIONS

### ENGINE

Type	6 cyl. in line OHV
Bore and Stroke	3.54 x 4.00 inches
Displacement	237.3 cubic inches
Compression Ratio	7.5:1
Maximum Horsepower	135 hp @ 3800 rpm
Maximum Torque	217 ft. lb. @ 2000 rpm
Carburetor	Down draft single barrel
Fuel Tank Capacity	18.5 U. S. gallons
Cooling System	17.6 quarts
Crankcase Refill	5 quarts
Battery	12 volt 50 amp hour
Alternator	360 w, 12 volt

### CLUTCH

Type	Dry single plate with torsion rubbers
Facing Diameter	10.8 inches
Facing Area	111 square inches
Transmission	3 speed; synchromesh 2nd and 3rd
Transfer	2 speed helical gear sliding type

### AXLE

Front	Full-floating hypoid
Rear	Semi-floating hypoid
Ratio	4.11:1

### SUSPENSION

Type	Leaf spring, hydraulic shock absorbers
------	---

**STANDARD EQUIPMENT** Hi-Lo Range 4-wheel drive • Hydraulic Clutch • Oil and Amperage Gauges • Oil-Bath Air Filter • Oil Filter • Reinforced Oil Pan • Complete Set of Tools • Locking Tool Box • Outside Rear-View Mirror • Dual Electric Windshield Wipers • Hub Caps • Dual Horns • Complete Vinyl Top, Doors, Side and Rear Curtains on Vinyl Cloth Top Models • Windshield Ventilator • Side Cowl Ventilators • Adjustable Driver's Seat • Seat Belts • Safety Straps

### STEERING

Type	Worm and sector roller
Gear ratio	21:1
Turning radius	17 feet

### BRAKES

	Hydraulic, 4 wheels
--	---------------------

Braking surface	183 square inches
-----------------	-------------------

### TIRES

	7.60 x 15, 4-ply
--	------------------

### PERFORMANCE

Maximum speed	90 mph
---------------	--------

### DIMENSIONS AND WEIGHT

Overall length	152.4 inches
Overall width	65.6 inches
Overall height	76.8 inches (Topless) 71.5 inches
Wheelbase	90.0 inches
Road clearance	8.3 inches
Headroom:	
front seat to headliner	40.5 inches
Legroom:	
front floor to front seat back	43.0 inches
Curb weight	3263 lbs. (Topless) 3193 lbs.)
Tread: front	55.3 inches
rear	55.1 inches

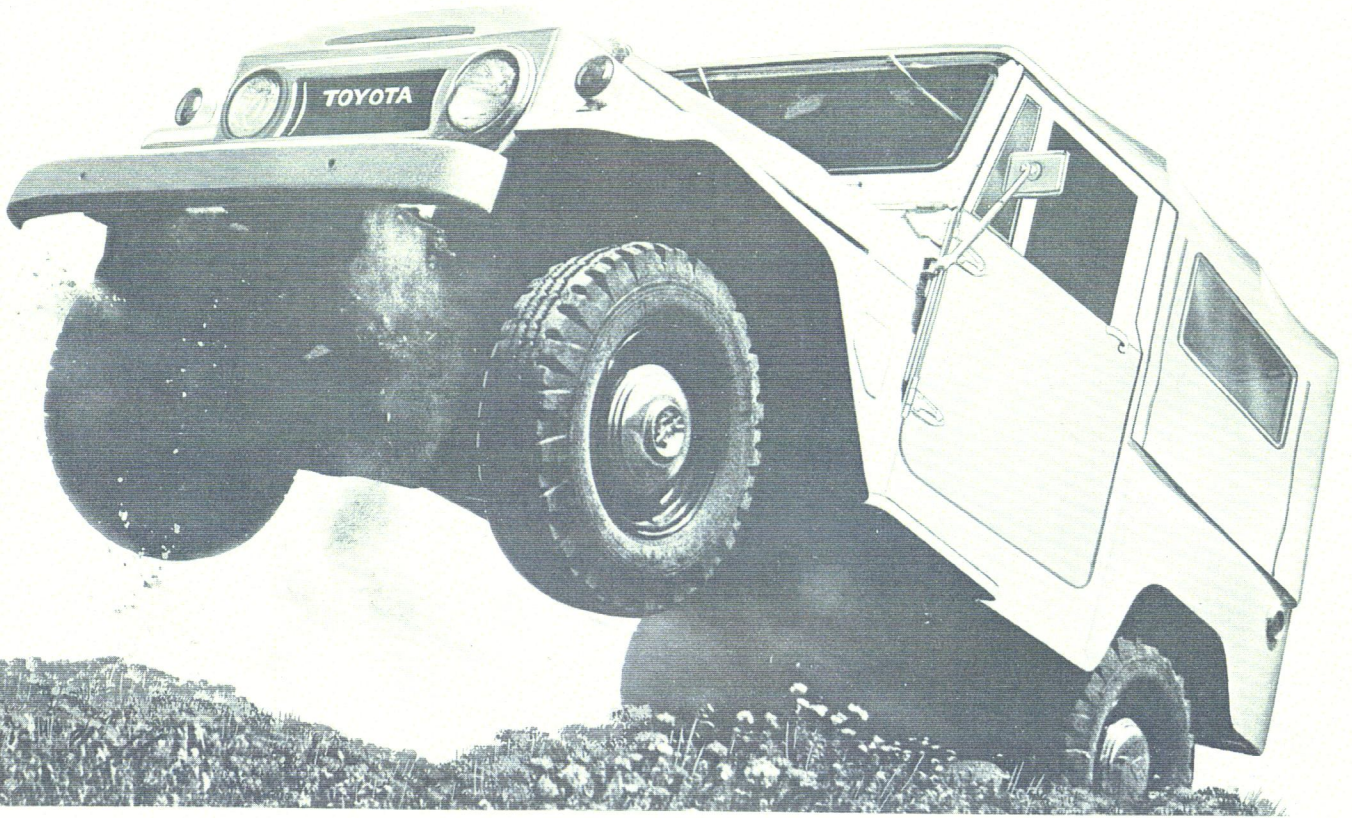
The tough ones come from Toyota—3rd largest manufacturer of commercial vehicles in the world

**TOYOTA**  
4-WHEEL DRIVE

**LAND CRUISER**

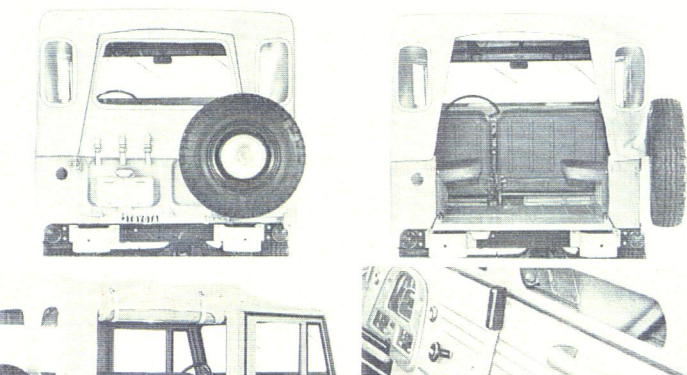
**VINYL TOP**

**FJ40L**  
**135 HP**



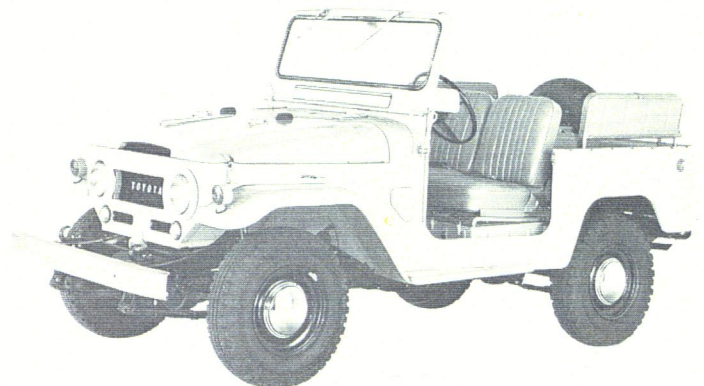
Here is the machine that has revolutionized 4-wheeling around the world. From the snub-nosed hood that houses TOYOTA'S BIG SIX cylinder, 135 hp powerhouse—on through its stocky, tank-tough body and underside and heavy-hinged tailgate and rear-hung spare—the TOYOTA LAND CRUISER is built for bruising service. It has 9 forward, 3 reverse gear combinations • it climbs 67% steep grades • it cruises 85 mph all day • And its rugged strength takes a beating no other rigs can withstand.

The TOYOTA LAND CRUISER Vinyl Cloth Top is a twin brother to the HARDTOP. Today, the canvas has been replaced by a new, tougher, more flexible VINYL top that is far more weathertight, fits better, looks better—and gives your TOYOTA wide visibility on all sides.



**TOYOTA LAND CRUISER TOPLESS**

**FJ40L**  
**135 HP**



For the man who needs no top, or carries bulky gear, supplies, or equipment, TOYOTA has introduced the new TOPLESS model. In addition to the top, the bows, doors and side-curtains