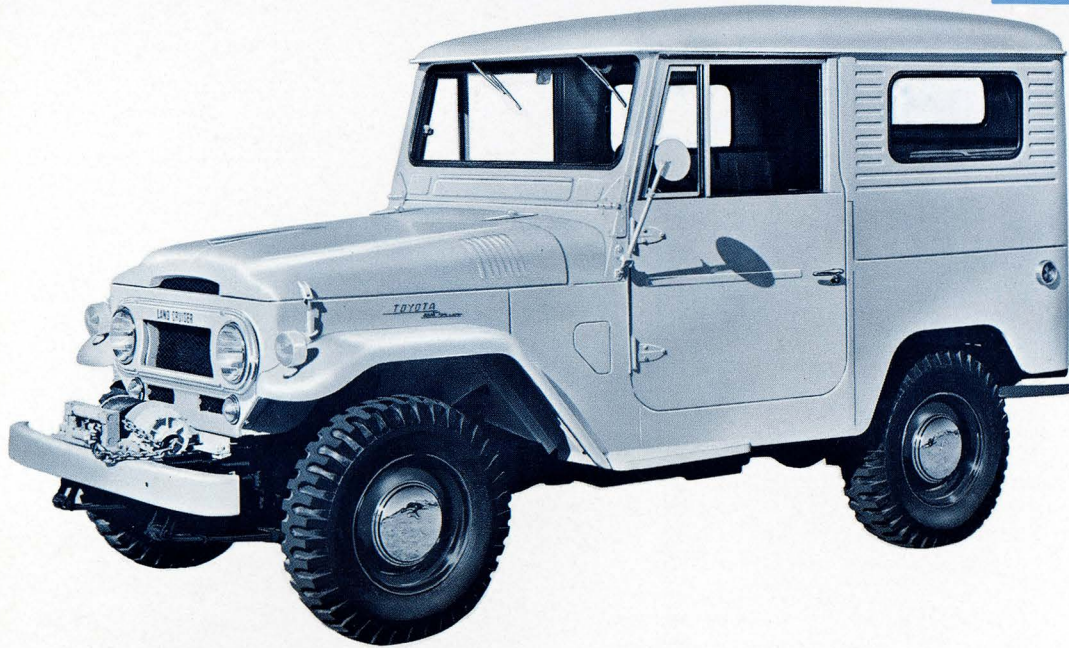


TOYOTA LAND CRUISER

**FJ40
135 HP**



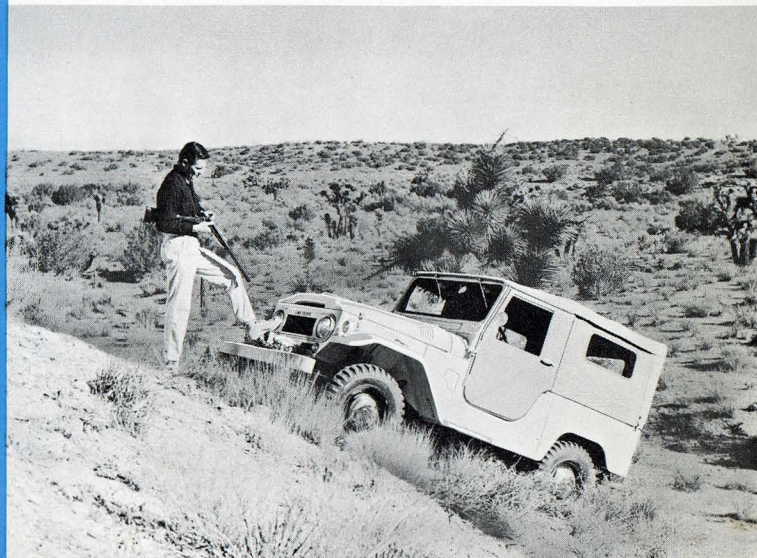
WORLD'S MOST POWERFUL ALL PURPOSE 4-WHEEL DRIVE VEHICLE!



Comfortable riding over the roughest terrain on deep, foam rubber seats in the Land Cruiser's weather-proof cab. An efficiently designed instrument panel keeps you well-informed at a glance. The gear shift is on the steering column to increase floor space.



The Land Cruiser is the only 135 HP, 6-cylinder, all purpose 4-wheel drive utility vehicle available in the world. All this extra power—nearly twice that of its nearest competitor—sees you safely over sand, swamp, snow or slush. Climb steeper grades, cross rocky streams and make turnpike speeds along the highway. Carry heavier cargoes. Hitch the winch and the Land Cruiser will haul you up mountain sides steeper than the 54% grades it climbs under its own power.

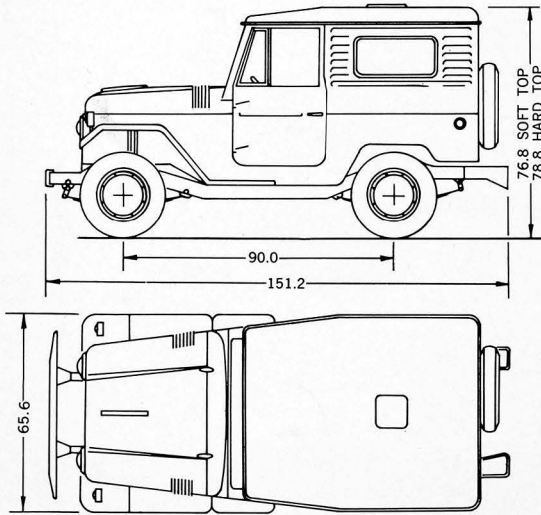


SPECIFICATIONS

FJ40

DIMENSIONS AND WEIGHT

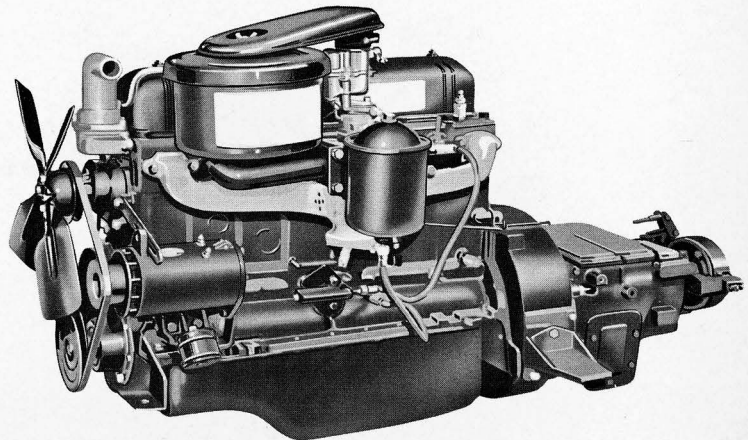
Overall length	151.2 inches
width	65.6 inches
height	76.8 inches (soft top) 78.8 inches (hard top)
Wheelbase	90.0 inches
Tread, front	55.3 inches
rear	53.1 inches
Curb weight	3263 lbs. (soft top) 3427 lbs. (hard top)
Ground clearance	7.9 inches



Dependable and economical, the F-Type 6-cylinder engine packs 135 HP.

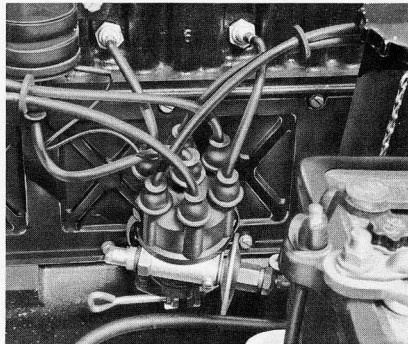
ENGINE — Model F gasoline engine, 4-cycle. Valve-in-head.

No. of cylinders	6
Bore and stroke	3.54 x 4 inches
Displacement	237.3 cubic inches
Compression Ratio	7.5:1
Gross HP	135 @ 3800 RPM
Maximum Torque	217 ft. lbs. @ 2000 RPM
Battery	12-volt, 55 amp. hour
Fuel Tank Capacity	18.5 U.S. Gallons
Rear axle ratio	3.36:1
Steering ratio	21:1
Turning radius	17 feet
Tires	7.60-15, 4 ply



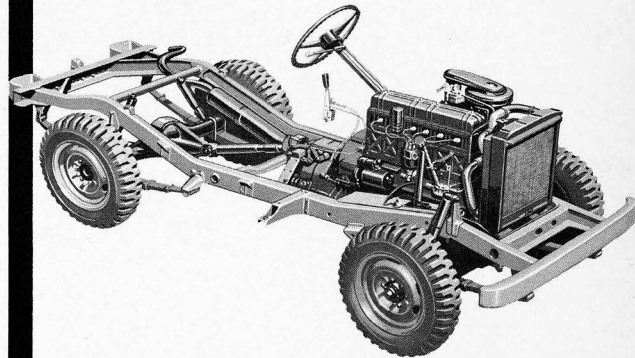
STANDARD EQUIPMENT

- Complete Canvas Top, Doors, Curtains (soft top models)
- Hi-Lo Range 4-Wheel Drive
- Transfer Control on Dash
- Hub Caps
- Tool Box Lock
- Front and Rear Passenger Seats
- Hydraulic Clutch
- Locking Gas Cap
- Reinforced Oil Pan
- Choice of three Rear Tail Gates
- Rear Electrical Socket for Trailer Connection
- Opening Door Windows
- Flashing Directional Signals
- Ventilating Windshield
- Side Cowl Ventilators
- Two Front Towing Hooks
- Rear Pintle Hook
- Outside Rearview Mirror
- Oil Filter
- Fuel Filter
- Oil Bath Air Cleaner



Here's the secret of the Land Cruiser's ability to ford streams. The ignition system is fully waterproofed.

Rugged and proven, the Land Cruiser's all-steel chassis is built for rough handling. Tough semi-elliptic leaf springs, and single acting, hydraulic shock absorbers give a comfortable, sure-footed ride. Extra strength is built into every component: front and rear axles and tie rod ends, for example, are induction heated. The Land Cruiser is the sturdiest all purpose 4-wheel drive vehicle in the world.



TOYOTA MOTOR DISTRIBUTORS, INC.
LOS ANGELES, SAN FRANCISCO, CHICAGO, NEWARK

Toyota's policy is one of continual improvement in design and manufacture. The specifications and equipment described in this publication are thus subject to change without notice.