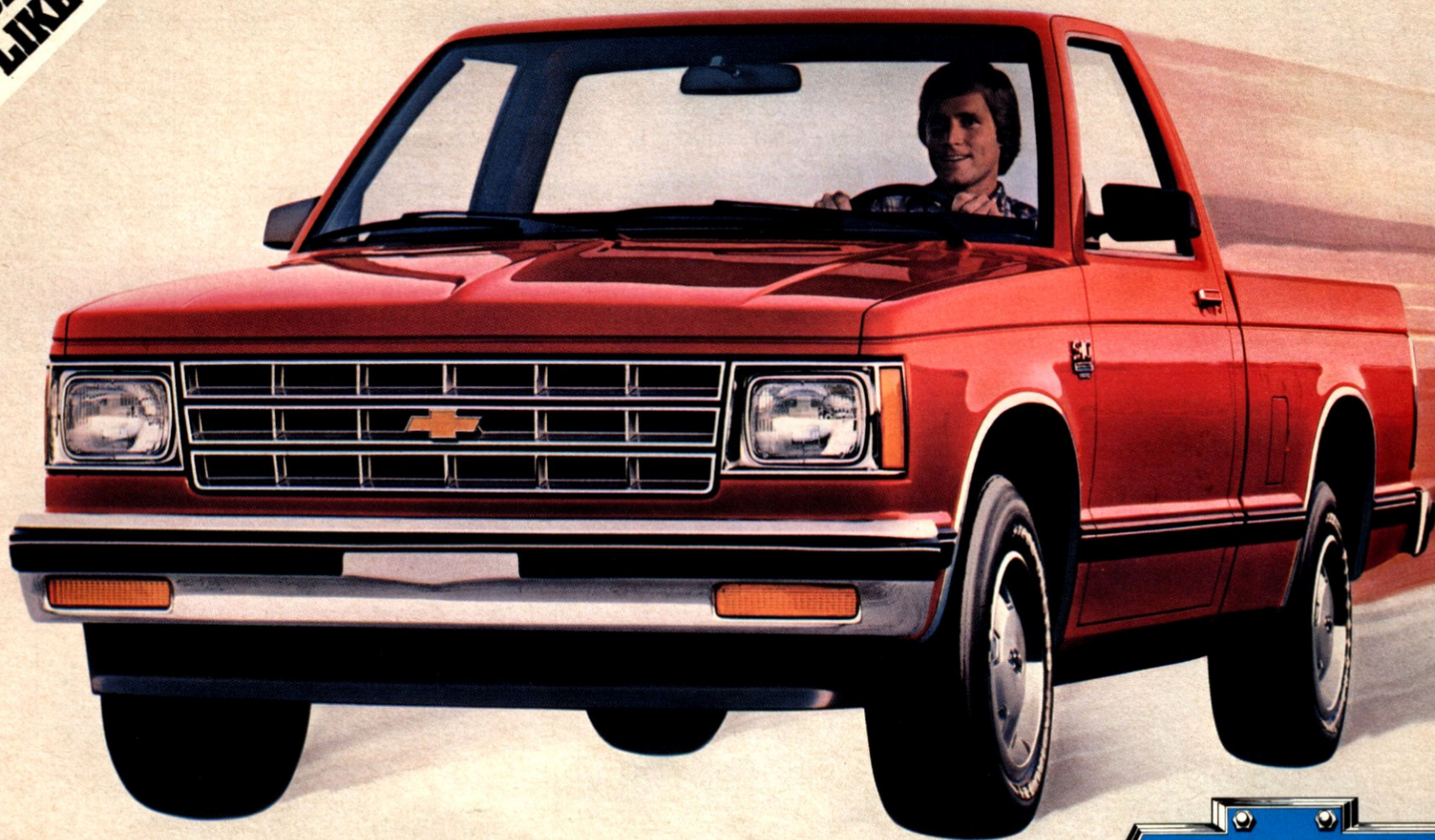


**THERE'S NEVER  
BEEN A TRUCK  
LIKE IT BEFORE.**

# CHEVY S-10

TAHOE · DURANGO · SPORT



# A NEW-SIZE PICKUP

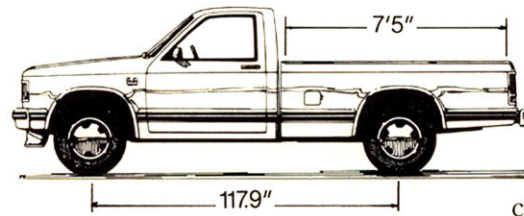
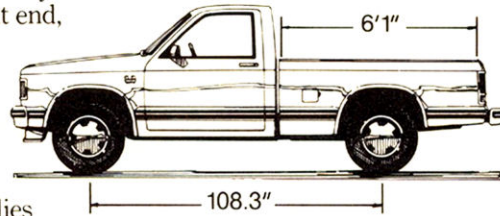
Chevrolet welcomes you to the future in pickups: the Chevy S-10.

A high-mileage truck designed and assembled in North America.

A high-mileage truck with both a standard I4 and an optional V6 engine.

**"Net-build" quality.** The new Chevy S-10 is built in a special way. The front end, cab and pickup box are first computer-welded into separate units before being fitted to the frame. The S-10 is designed to be put together *only one way*: the correct way.

If any of these and other assemblies don't fit, they are rejected. They are not simply adjusted to fit. Engineers call this "net build." It results in uncanny quality. In fact, the S-10 has the most thorough program of accurately fitting metal to metal in General Motors truck history.



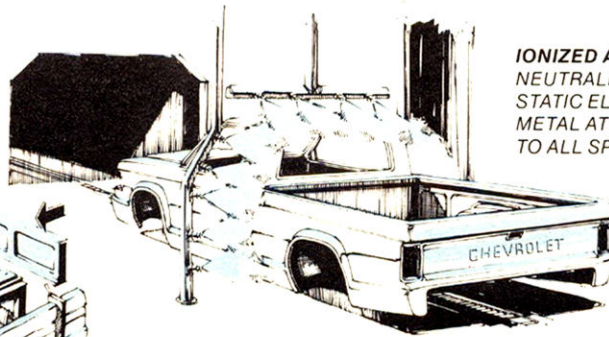
**Two wheelbases. Easy payload ordering system.**

The new S-10 comes in two standard models: a 108.3-inch wheelbase with a 6-ft.-1-in. cargo box and a 117.9-inch wheelbase with a 7-ft.-5-in. cargo box. Three optional trim levels are available: Tahoe, Durango, and Sport. Both wheelbase sizes have more double-wall

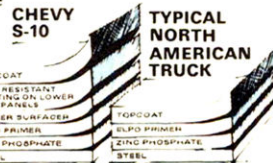
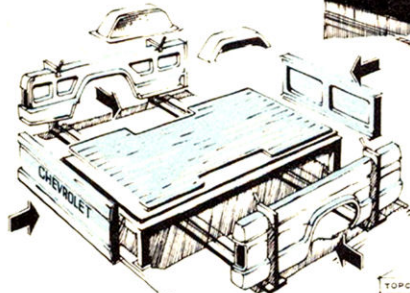
construction than the import trucks. They are each available with a standard 1,000-lb. payload or optional 1,500-lb. payload, including people and cargo. Instead of ordering by GVWR, you order your S-10 to match your payload needs. This is a simple and realistic way of ordering a truck. It's only one of many new concepts you'll find in the strikingly new Chevy S-10.

# A NEW WAY TO BUILD PICKUPS

**MASTER CHECKING FIXTURES.** THESE AID THE PRECISE ASSEMBLY OF THE CARGO BOX, CAB AND FRONT END. THE S-10 IS BUILT TO FIT!



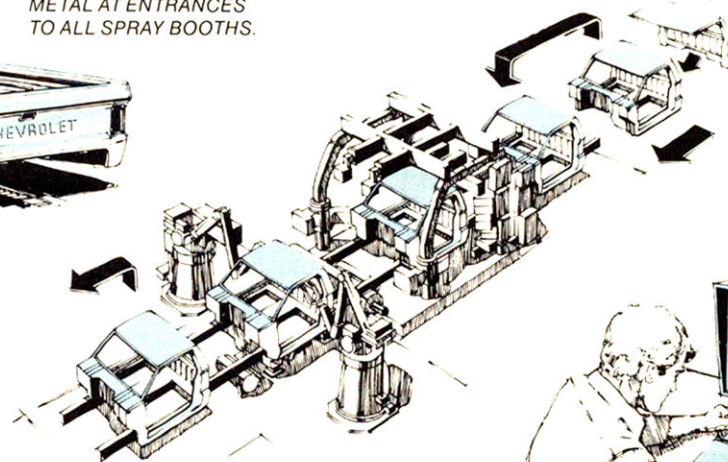
**IONIZED AIR BLOW-OFF.** NEUTRALIZES DUST-COLLECTING STATIC ELECTRICITY ON SHEET METAL AT ENTRANCES TO ALL SPRAY BOOTHS.



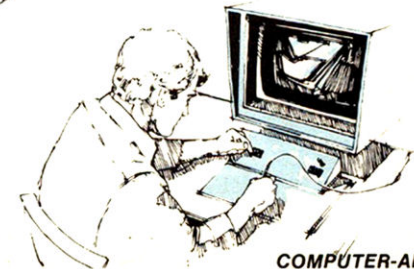
**A PAINT FINISH UP TO 5 LAYERS DEEP.** THICKER THAN CONVENTIONAL NORTH AMERICAN TRUCKS. INCLUDES CHIP-RESISTANT COATING SPRAYED ON LOWER PANELS.



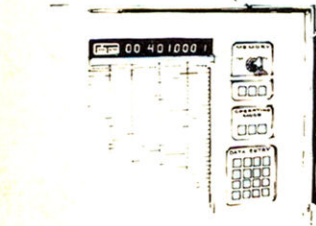
**PRECISION STAMPINGS.** MANY SHEET METAL COMPONENTS ARE RESTAMPED FOR PRECISION.



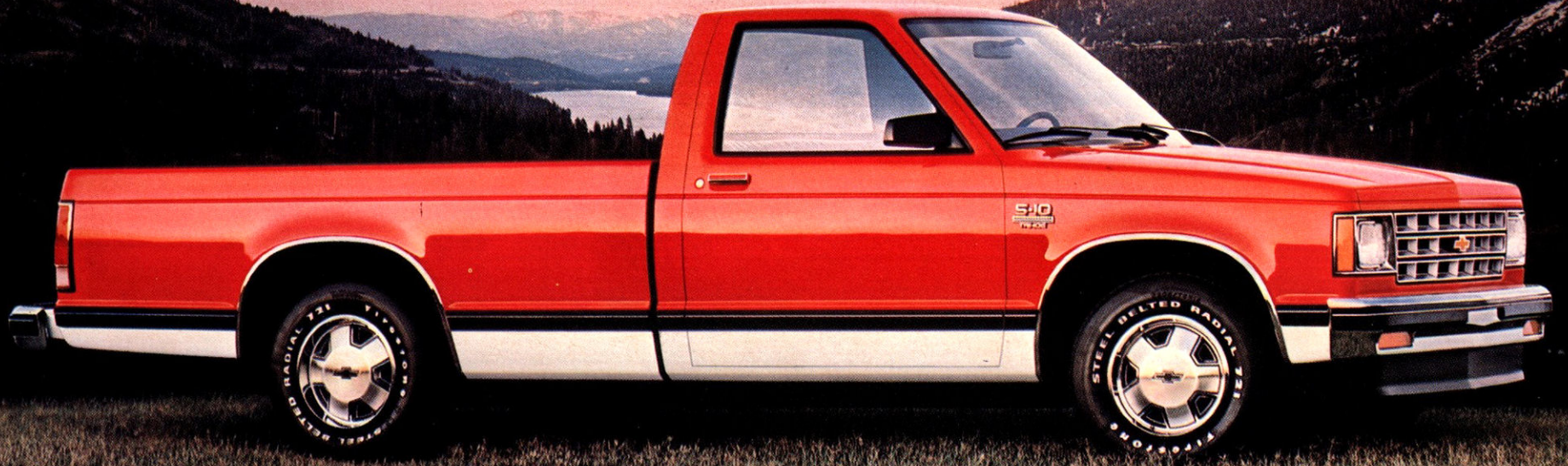
**EXTENSIVE AUTOMATIC WELDING AND ASSEMBLY.** THIS SOLID-STATE WELDER AUTOMATICALLY WELDS THE CAB SHEET METAL TOGETHER WITH CONSISTENT WELDS. ONE OF MANY AUTOMATIC WELDING MACHINES USED.



**COMPUTER-AIDED DESIGN EQUIPMENT.** ACCURATELY TRANSFERS DATA FROM THE DESIGN MODELS FOR PRECISE TOOLING AND ASSEMBLY.



**PROGRAMMABLE LOGIC CONTROLLERS.** FOR PRECISION CONTROL OF ALL AUTOMATION EQUIPMENT.



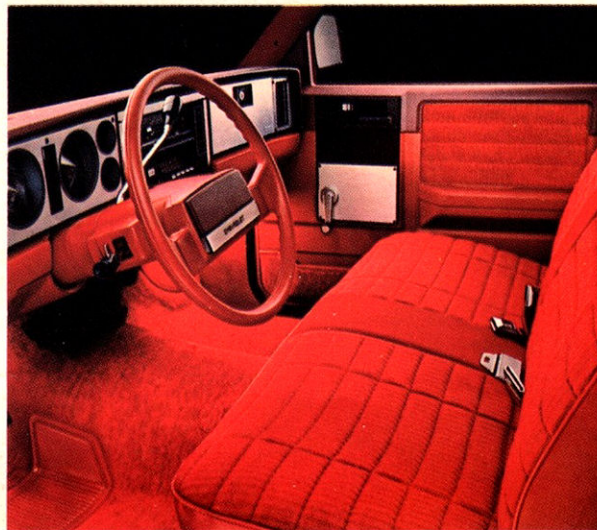
Cover: Chevy S-10 with 6-ft.-1-in. cargo box. Shown here, Chevy S-10 long wheelbase model with 7-ft.-5-in. cargo box.



## QUALITY, NEW-SIZE AND HIGH MILEAGE.

The new-size Chevy S-10 offers the luxurious Tahoe, shown here, as one of three optional trim levels: Tahoe, Durango and Sport. Selected items from the Standard and Durango models are included along with special Tahoe features.

That aerodynamic body slices through the air on radial tires and black wheels trimmed with a bright wheel cover. Body side and other mouldings help protect a brilliant paint finish. Inside, you enjoy your work on foam-cushioned bench seats trimmed in Custom Vinyl or Cloth. And, you get side window defog-



Tahoe interior with Cloth seat trim.

gers, deluxe colour-keyed steering wheel, gauge package with trip odometer, colour-keyed carpeting, insulation package, headlights-left-on warning buzzer and other trim items. Ten exterior colour choices are available, plus two-tones.

High mileage is an important benefit of the Tahoe package and every Chevy S-10. In addition, the S-10 pickup offers both a standard L4 and an optional V6.

Standard 1.9 litre L4 Engine with 4-speed Manual Transmission		
<b>Urban*</b> 31 MPG (9.2 L/100 km)	<b>Highway*</b> 47 MPG (6.0 L/100 km)	<b>Comparative*</b> 39 MPG (7.3 L/100 km)

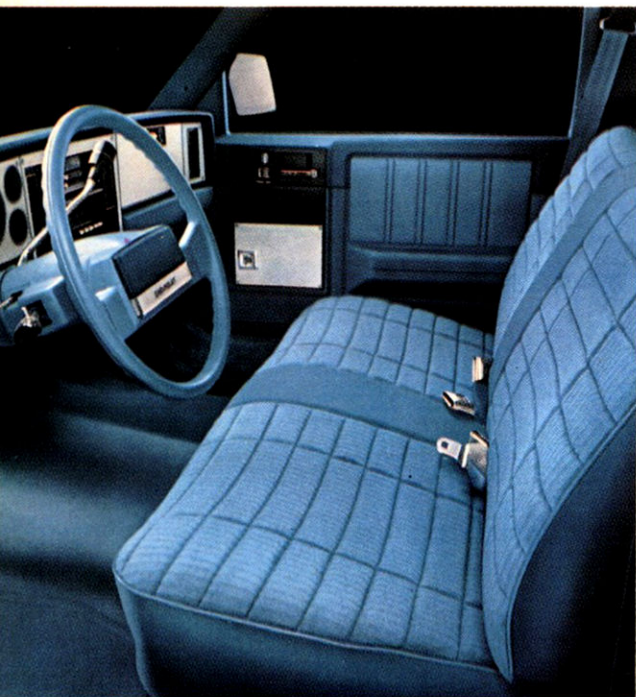
\*Remember, these figures are estimates based on Transport Canada approved laboratory test methods. The actual fuel consumption you get will vary according to your driving habits, your vehicle's condition and available equipment.



Chevy S-10 long wheelbase model with 7-ft.-5-in. cargo box and Durango option.



Roomy S-10 interior.



Durango interior with Custom Cloth seat trim.



## QUALITY PACKS A HALF TON. AND MORE.

Don't let the S-10's sleek good looks fool you. Without optional equipment, the 6-ft.-1-in. cargo box can haul up to 1,000 lbs. of payload, including people and cargo. The optional 7-ft.-5-in. cargo box model can also carry 1,000 lbs., but with added room for those longer items.

That's a respectable chunk of freight. If you need more, you get more with a Heavy-Duty Payload Option of 1,500 lbs., available in both box lengths. This includes a front stabilizer bar, heavy-duty rear springs, power brakes, and is available only with an optional 2.8 litre V6 engine and steel-belted radial tires. In the new S-10, quality works hard!

Every hard-working S-10 also has Double-Wall construction. This features both an inner and outer steel wall in critical areas: doors, front fenders, hood, cargo box side panels, and tailgate. The more you find out about a new Chevy S-10, the more you'll see how well built it is.

## STRETCH OUT, CANADA.

Give those legs the living room of an S-10 cab: 39.5" head room, 42.4" leg room. If you don't need all that room, move the seat up and enjoy. No imported pickup has more interior head and leg room.

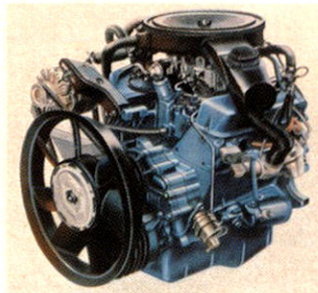
The optional Durango trim package is a powerful statement in comfort and style. It includes selected items in the Standard trim level with Durango touches all its own. In the roomy cab, you get folding inertia-latch bench seats in Custom Vinyl or Cloth, Durango nameplate on the instrument panel, side window defoggers, cigar lighter, door-operated courtesy light and dome light, deluxe colour-keyed steering wheel, colour-keyed floor mats, headlights-left-on warning buzzer, and more.

Outside, you get argent wheels with hub caps and trim rings, argent grille with bright trim, a chrome front bumper with rub strip, Durango fender identification, and reflectorized Chevrolet tailgate identification. The Durango package is a quality addition to a quality truck.



Chevy S-10 short wheelbase model with 6-ft.-1-in. cargo box and optional Sport trim package.

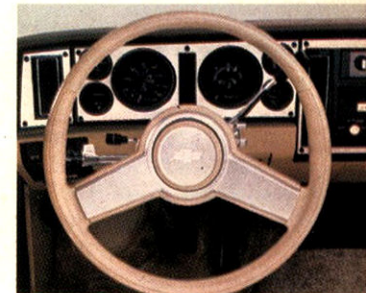
Sport interior with Sport Cloth seat.



Optional 2.8 Litre V6.



Locking console between the seats.



Sport instrument panel.



## ADD A V6. BYE, BYE, COMPETITION.

Choose your S-10 with an optional V6 and you can tell the competition "Sayonara" and "Auf Wiedersehen." None of the import trucks offer a V6.

Add the optional Sport package for the look to match the go. It has high-back bucket seats with Sport Cloth in two colour choices, a locking console between

the seats, colour-keyed carpeting, Sport steering wheel in two colour choices, gauge package with trip odometer, special interior trim, fiberglass hood blanket and cab/door/floor insulation.

Also looking good are styled argnet wheels with special centre hub and trim rings, Two-Tone paint, bright-trimmed black body side mouldings, other dress-up mouldings, colour-keyed front bumper with rub strip, argnet grille with bright trim, and more. Plus selected items from the Standard, Durango, and Tahoe trim levels.

S-10 Sport. If it looks good to you now, consider how good it'll look to someone else at trade-in time.



Chevy S-10 Standard with optional Heavy-Duty Trailering Package.

# S-10

## THIS NEW-SIZE TRUCK HAS IT ALL TOGETHER.

High-quality built. Roomy interior. Brilliant finish. Smooth ride. High mileage. The list becomes more impressive when you see all you get in the Standard trim package.

S-10 Standard includes a dark argent grille, headlamps and parking lamp bezels with chrome finish and black trim, low-gloss black front bumper, black windshield and rear window mouldings, left and right black outside mirrors, and argent wheels with hub caps. Choose from 10 exterior colours, plus optional two-tones.

The instrument panel, door trim, sunshades, headliner and windshield pillar mouldings come in four colours. So do the folding, inertia-latch bench seats trimmed in vinyl. Also included are rubber floor mats, interior light, door/roof sound deadener and front floor insulation.

Your Chevy dealer has details on all the items in the S-10 Standard and optional trim packages. Test-sit any S-10. Then test-drive one and see what an all-together value it is.



S-10 Standard interior.

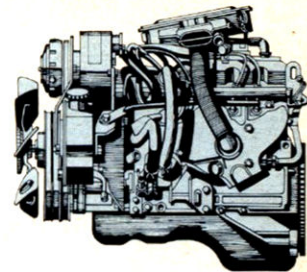
## TOWMOBILE.

Properly equipped, the new-size S-10 tows twice as much as any import. With an optional Heavy-Duty Trailering Package, the Chevy S-10 can haul up to 4000 lbs., including people, trailer, and cargo in the pickup box. The package includes a 4000-lb.-capacity trailer hitch platform and 7-wire trailering harness with heavy-duty flasher. It is only available with the optional 1500-lb. payload package, 2.8 Litre V6 engine, automatic transmission, 3.08 rear axle ratio, transmission oil cooler, power steering, power brakes, heavy-duty alternator, heavy-duty shocks and glide-out spare tire carrier. Optional rear step bumper is also recommended.

See your dealer for complete information.

## L4 HUSTLE.

A high-mileage 1.9 litre, in-line, four-cylinder engine is standard on S-10 models with a maximum standard payload rating of 1,000 lbs. The L4 is available with a standard 4-speed manual transmission or an optional automatic transmission.



This all-around powerhouse has a single overhead camshaft, hemispherical combustion chambers and crossflow ports. A transistorized ignition gives a hot spark for dependable cold weather starting. A high-efficiency radiator helps keep it from blowing its cool and yours with a generous network of cooling fins.

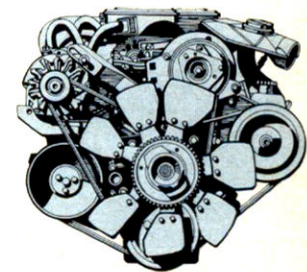
This means you get an easy-to-live-with performer designed to start pronto, tote a sizeable load and take you home without a lot of stops at a gas pump. If this sounds like it's made for you and the times, you're right.

## V6 MUSCLE.

Here is the only V6 you can get in this size truck. No smaller truck offers one.

It's a high-mileage 2.8 litre V6, optional with either the standard payload rating of 1,000 lbs. or the optional maximum of 1,500 lbs. A 4-speed manual transmission is standard and an automatic transmission is optional. An optional 5-speed manual transmission with overdrive will be available after February, 1982.

The cylinders are banked at 60° to promote even firing without having with each connecting rod offset 60°. This simple design also has a high-efficiency radiator, electronic ignition, and a new wind-tunnel-effect cooling fan for models without optional air conditioning. The fan and its shroud turn as a unit for efficiency that makes engineers smile. Clever, like the S-10 itself.



# THE POWER OF NORTH AMERICAN TECHNOLOGY.

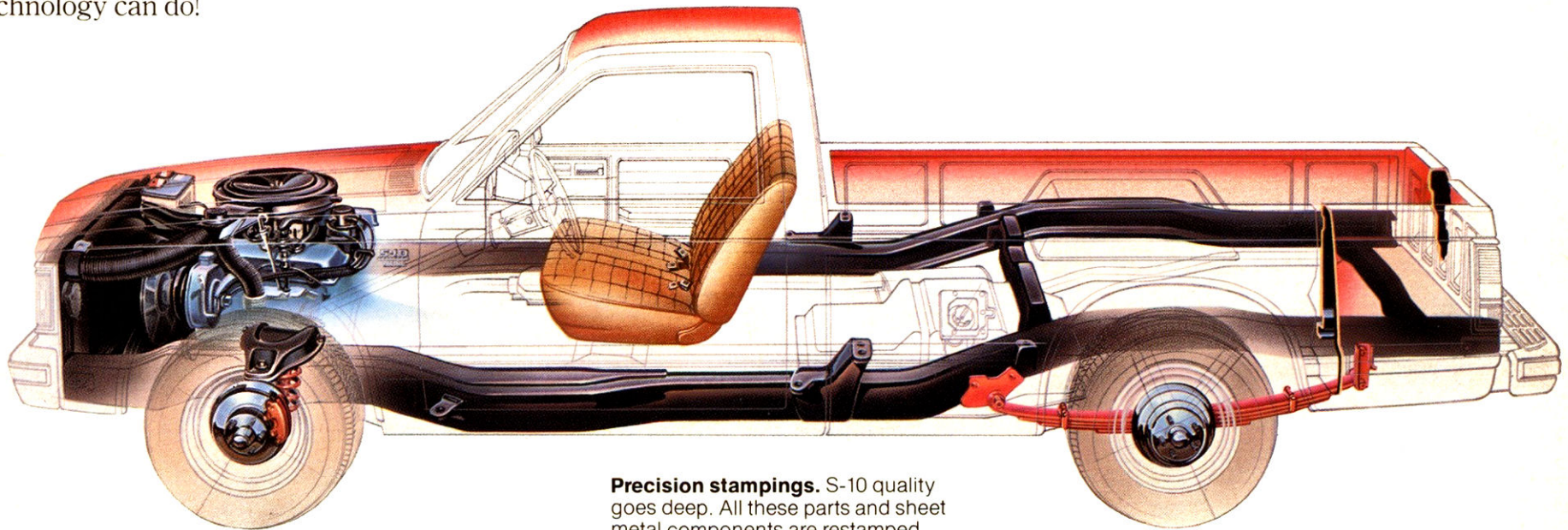
You'll see it. Feel it. The new Chevy S-10 has what it takes to show the world what North American technology can do!

**One-piece chrome bumper.**  
**High-efficiency cross flow radiator.**

**Optional 2.8 litre V6.**  
**Delco Freedom II battery.**  
**Front springs are computer-selected.**

**Lowest air drag coefficient of any truck in Chevy history.**  
**Radial tires standard.**  
**Audible disc brake wear sensors.**

**Zincrotern® coated steel brake lines.**  
**Hot wax coating on frame.**  
**Chip-resistant spray.**



**High-solids, top-coat enamel paint.**

**Extensive anti-corrosion treatments.**

**One-piece door hinges are welded.**

**Hemmed tailgate.**

**Steel frame.**

**Consistent welds.**

**Windshield is bonded to the window frame.**

**Advanced electronic quality control.**

**Precision stampings.** S-10 quality goes deep. All these parts and sheet metal components are restamped for a quality fit:

- Radiator support assembly surfaces
- Inner and outer hood reinforcement surfaces
- Front fender inner panel
- Inner and outer cargo box side panel
- Hood inner panel
- Door hinges and reinforcement
- Entire perimeter of inner door assembly
- Weld surfaces of all fender and hood assemblies

**Seat back is angled 23° for comfort**

**Curved track seat adjuster moves 6.6".**

**Roomy interior with 39.5" head room, 42.4" leg room.**

**Seats are shrink-wrapped in plastic before assembly and shipping.**

**Double-wall construction in cargo box side walls and tailgate.**

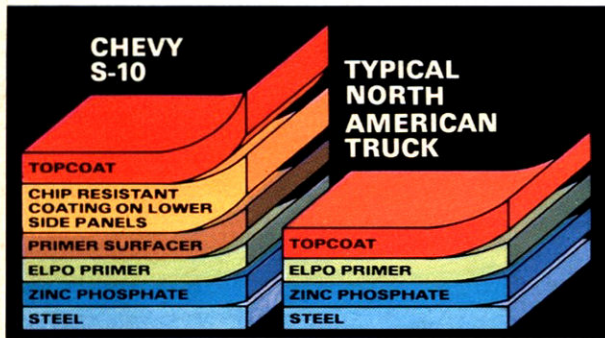
**Rear leaf springs are load-rated and matched side to side.**





# A HISTORY-MAKING FINISH.

The quality of paint finish on the new Chevy S-10 is outstanding. The factory paint system is designed to deliver a high level quality. Just as important is the dedication of paint suppliers and factory technicians to its excellence.



**High-quality materials.  
Extensive anti-corrosion.**

1. Zincrometal® galvanized steel, zinc alloy coated steel, and zinc-plated parts are used in important areas, such as the pickup box.

2. **Zinc-rich anti-corrosion primer** is sprayed on before final priming.

3. **Cathodic ELPO primer** is used on the entire cab, cargo box and front-end sheet metal.

4. **Chip-resistant coating** is sprayed on lower body panel surfaces to help prevent paint damage from stones and road debris.

5. **Aluminized wax preservative** is used on inner door body surfaces to help resist corrosion from road salt.

6. **A coat of primer surfacer** is added for further sealing and pre-finishing.

7. **New high-solid solvent enamel top coat** is baked on for the final step. This new technology uses a maximum of up to 60% solids, with the ratio of solids to solvent varying with colour.

## The GM Continuous Protection Plan

An option that offers service protection in addition to that provided by GM's new vehicle limited warranty. Available only in the U.S. and Canada for the 1982 model year. Ask your dealer about this option.

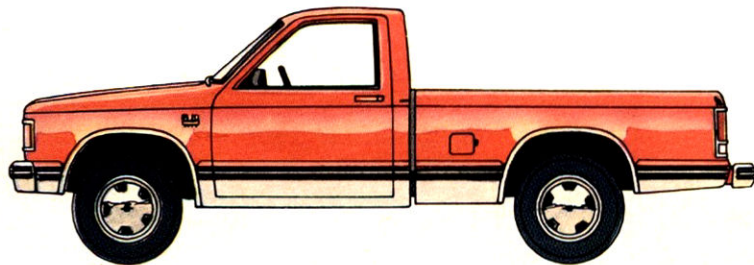
## GM Offers a Three-Year Perforation-From-Corrosion Limited Warranty.

Exhaust system components not included. See your Chevrolet dealer for details on other limitations.

## GM Power-Protection Plan.

See your dealer for information about GM's 24-month/40,000-kilometres Power-Protection-Plus Limited Warranty.

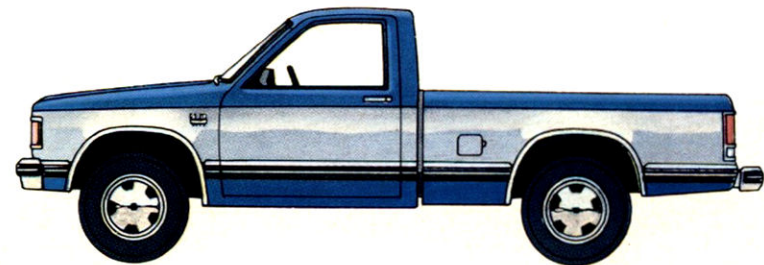
## OPTIONAL TWO-TONES.



### Sport Two-Tone\*

- Accent colour extends around to front and rear bumpers.
- Decal standard on Durango and Standard model.

\*Included in Sport package.



### Special Two-Tone

- Accent colour extends around the front and rear.
- Mouldings included.

# SPECIFICATIONS

## Basic Components for S-10 Pickup

Wheelbases	108.3" and 117.9"	
	Standard	Optional
Payload (lb.)	1000	1500
GVWR range (lb.)	3425 to 4190	3970 to 4720
Engine—Litre (cu. in.)	1.9 L (119 Cu. In.) L4	2.8 L (173 Cu. In.) V6
Front suspension—type/spring	Independent/Coil Springs	—
Capacity (lb.)	2300	—
Rear suspension—axle type	Semi-Floating	—
Capacity (lb.)	2550	—
Brakes—disc/drum	Manual	Power
Steering—type	Manual	Power
Transmission	4-Speed Manual	3-Speed Automatic *5-Speed Manual
Tire size	P195/75R-14 (Fiberglass Belted)	P195/75R-14 (Steel Belted) P205/75R-14 P205/70R-14

\*Available after February, 1982; requires V6 engine.

## Engine Specifications

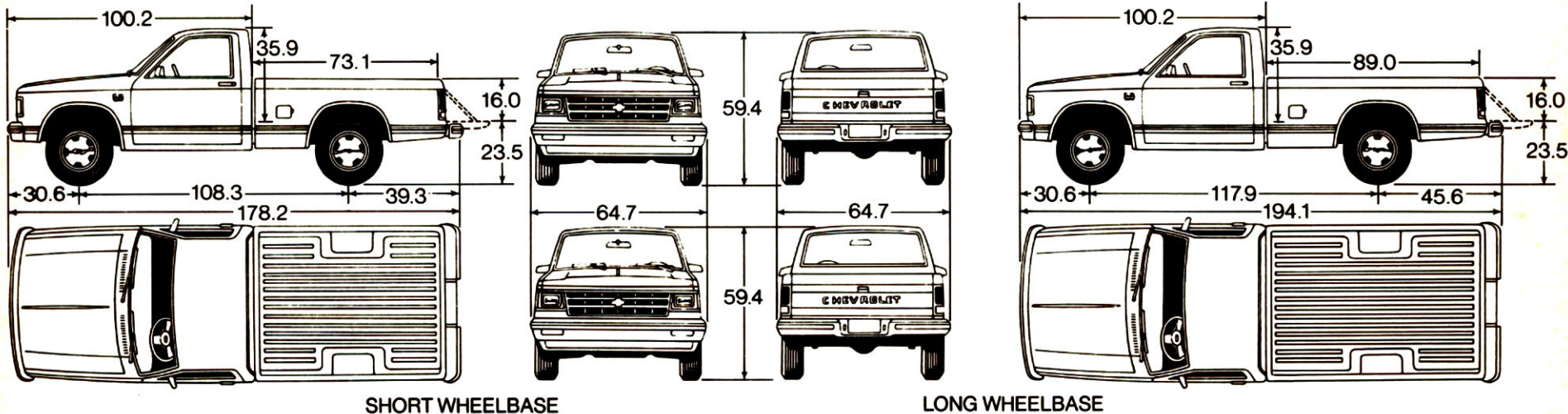
	L4	V6
	Displacement	1.9 Litre (119 Cu. In.)
Engine Ordering Code	LR1 (A)	LR2 (B)
Bore & Stroke (in.)	3.42 x 3.23	3.50 x 2.99
Compression Ratio	8.4 to 1	8.5 to 1
SAE Net Horsepower @ RPM	82 @ 4600	110 @ 4800
SAE Net Torque (lb.-ft.) @ RPM	101 @ 3000	148 @ 2000

(A) Produced by Isuzu Motors Limited, Japan.

(B) Produced by GM—Chevrolet Motor Division, U.S.A.

### A WORD ABOUT ENGINES.

Some Chevrolets are equipped with engines produced by other GM divisions, subsidiaries or affiliated companies worldwide. See your dealer for details.



### A Word about Assembly, Components and Optional Equipment in these vehicles.

The vehicles described in this brochure are assembled at various Divisions of General Motors Corporation. These vehicles incorporate thousands of different components produced by General Motors of Canada Limited and related companies and their suppliers. From time to time during the manufacturing process, it may be necessary, in order to meet public demand for particular vehicles or equipment, or to meet federally mandated emission and safety requirements or fuel economy guidelines, or for other reasons, to produce vehicles with different components or differently sourced components than initially sched-

uled. All such components have been approved for use in our products by General Motors of Canada Limited or related companies and will provide the quality performance associated with our name.

Please note that certain optional equipment can be ordered only in conjunction with other optional equipment. Also, upgrading from specified standard equipment may be necessary when certain optional equipment is ordered. Ask your sales representative for details.

With respect to extra cost optional equipment, make certain you specify the type of equipment you desire on your vehicle when ordering it from your dealer. Some options may be unavailable when your vehicle is built. Your dealer receives advice regarding current availability of options. You may ask the dealer for this

information. GM also requests the dealer to advise you if an option you ordered is unavailable. We suggest you verify that your vehicle includes the optional equipment you ordered or, if there are changes, that they are acceptable to you.

All illustrations and specifications contained in this catalogue are based on the latest product information available at time of publication approval. The right is reserved to make changes at any time, without notice, in prices, colours, materials, equipment, specifications and models, and to discontinue models. *Some of the equipment shown or described throughout this catalogue is available at extra cost. Check with your Chevrolet dealer for complete information.*

These vehicles are also available from GMC dealers under the GMC nameplate (S-15).

