

Get in touch with a whole new driving experience.

MEMO





Spoiler optional on T-Series.

## Exciting cars are just the beginning.

It is an attitude, a philosophy. It's a whole new way of meeting the expectations of those who know that driving is about a whole lot more than merely moving from point A to point B.

FTE is a new venture from Ford and Tickford,

Ford's partner in performance engineering and vehicle refinement.

FTE is all about exciting cars and the rewarding ownership experience that goes with them. With the T-Series, for example, you can, via the internet,

track your car through the build process, and even visit our plant to help with the finishing touches.

To deliver a unique ownership experience, Ford has created dedicated FTE centres throughout Australia.

At these FTE dealerships you'll find a car culture, a dedicated commitment to all things automotive.

The experience continues long after you take delivery of your vehicle. You will enjoy special privileges when it's time for regular vehicle service and you will be entitled to FTE Premium Assist, a package of car-related benefits and other exclusive ownership services.



## Check this list to find the FTE Dealer nearest you.

### City FTE Sydney

75-85 Crown St  
Sydney NSW 2000  
02 9332 8332

### FTE Ryde

2-16 Blaxland Rd  
Ryde NSW 2112  
02 9859 4311

### FTE Liverpool

Cnr Hume Hwy & Todman Rd  
Warwick Farm NSW 2170  
02 9828 8090

### FTE Newcastle

Cnr Tudor & Gordon Ave  
Hamilton NSW 2303  
1800 220 500

### City FTE Melbourne

734 Elizabeth St  
Melbourne Vic 3000  
03 9345 1600

### FTE Doncaster

825 Doncaster Rd  
Doncaster Vic 3108  
03 9840 6488

### FTE Oakleigh

Cnr Ferntree Gully Rd & Princes Hwy  
Oakleigh Vic 3166  
03 9564 3855

### FTE Launceston

Cnr Lower Charles & Williams St  
Launceston Tas 7250  
03 6323 7060

### City FTE Brisbane

150 Leichhardt St  
Springhill QLD 4000  
07 3000 4444

### FTE Townsville

77 Charters Towers Rd  
Hermit Park QLD 4810  
07 4750 0470

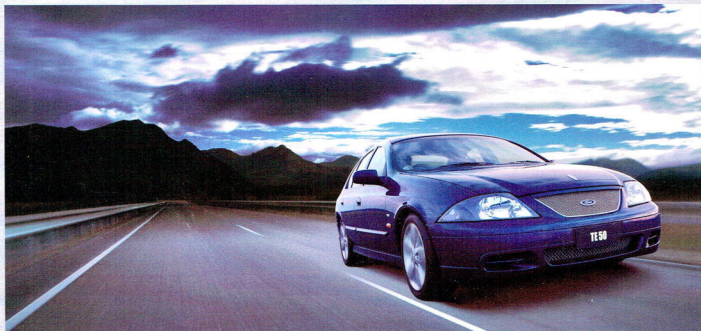
### FTE Southport

292 Nerang Rd  
Southport QLD 4215  
07 5582 7700

### FTE Canberra

24 Lonsdale St  
Braddon ACT 2612  
02 6267 1699

To register for priority FTE information phone 1800 035 666  
or visit [www.fte.ford.com.au](http://www.fte.ford.com.au)



This brochure is designed to provide you with a general introduction to the FTE Products (including available optional equipment) referred to, and should be read in conjunction with the latest specification sheet. Because of changes in conditions and circumstances Ford® reserves the right, subject to all applicable laws, at any time, at its discretion, and without notice, to discontinue or change the features, designs, materials, colours and other specifications and the prices of their products, and to either permanently or temporarily withdraw any such products from the market without incurring any liability to any prospective purchaser or purchaser. The latest specification sheet should be referred to for information on the availability, ordering and use of optional equipment. Always consult an Authorised FTE Dealer for the latest information with respect to features, specifications, prices, optional equipment and availability before deciding to place an order. \*FORD MOTOR COMPANY OF AUSTRALIA LIMITED. (A.C.N. 004 116 223) Registered Office: 1735 Sydney Road, Campbellfield, Victoria 3061, Australia. #Conditions and exclusions apply. See your Authorised FTE Dealer for details. European Cougar pictured in this brochure. Australian Cougar has equivalent features. Printed September 1999. FCL 7714



## Cougar will excite your deepest driving instincts.

The fresh New Edge styling is aerodynamically efficient to slice through the air. The stance is low and taut. New Ford Cougar is designed to quicken your pulse whenever you want it to.

Strong and spirited,



yet smooth, refined and deceptively quiet, Cougar's powerful 2.5 litre V6 DOHC engine delivers instantaneous throttle response and is delightfully free revving. The slick close-ratio manual transmission brilliantly utilises Ford Cougar's low-speed torque. Inside is rarefied, fluent. Everything looks, sounds,

feels, even smells right. The sports seats provide the perfect fit and grip for people who love to drive. Front and side airbags help to protect you and the front seat passenger. And when it's late and you just want to get home, Cougar is supple, reassuring and comfortable.

Fully equipped Cougar sports cockpit.



A car of many moods. The car for those who know that while life is an open road, how you get there really counts.



Spoiler optional on T-Series.



### Fast cars built slowly.

With the T-Series, Ford and Tickford engineers have created a new high level of sophisticated motoring. Each model makes an impressive statement about style, performance and luxury.

Each is an expression of engineering precision and the result of the most painstaking attention to detail. Every engine is meticulously hand-assembled. It is the

way the car looks and behaves on the road, its stance and the feeling it gives you every time you hold the steering wheel.

### Engine synergy.

Part of that special feeling comes from the Synergy 5000 V8 engine that is at the heart of every T-Series model. Each engine is individually numbered and is identified by a special build plate mounted under the hood. As the name suggests, these engines are the sum of all their parts. On the TS50 model, that means aluminium cylinder heads, unique camshaft,

a large, easy breathing throttle body, high flow catalysts, low restriction exhaust manifolds and low friction motor-sport roller rockers. They are just some of the things our engineers have done to make these one of the most powerful and

responsive Australian-built 5-litre V8 engines ever.

### Change gears like Schumacher.

The T-Series also brings Australian driving enthu-

siasts the pleasures of an automatic transmission equipped with Electronic Sports Shift (ESS)\*. In its normal guise, the auto transmission is an adaptive shift unit with five shift maps. But when you switch

to ESS the fun really starts. It's motor sport technology that gives the driver

a pseudo-manual transmission, allowing gear positions to be maintained or changed from a thumb button on the steering wheel. With this kind of serious performance, you'd expect to get brakes and suspension systems to match. You do. And the T-Series also comes with interior appointments that make you feel, at the end of even the longest journey, like you want to do it all over again.



The TS50's 2200kW Synergy 5000 V8 engine.

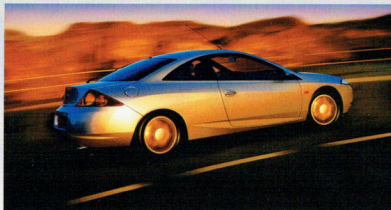


ESS steering wheel control.



All T-Series are equipped with 329mm diameter x 28mm wide front disc rotors with curved venting and grooved face for excellent anti-fade performance.

\*Automatic transmission (including ESS) optional on TS50.



COUGAR



TE50



TS50



TL50

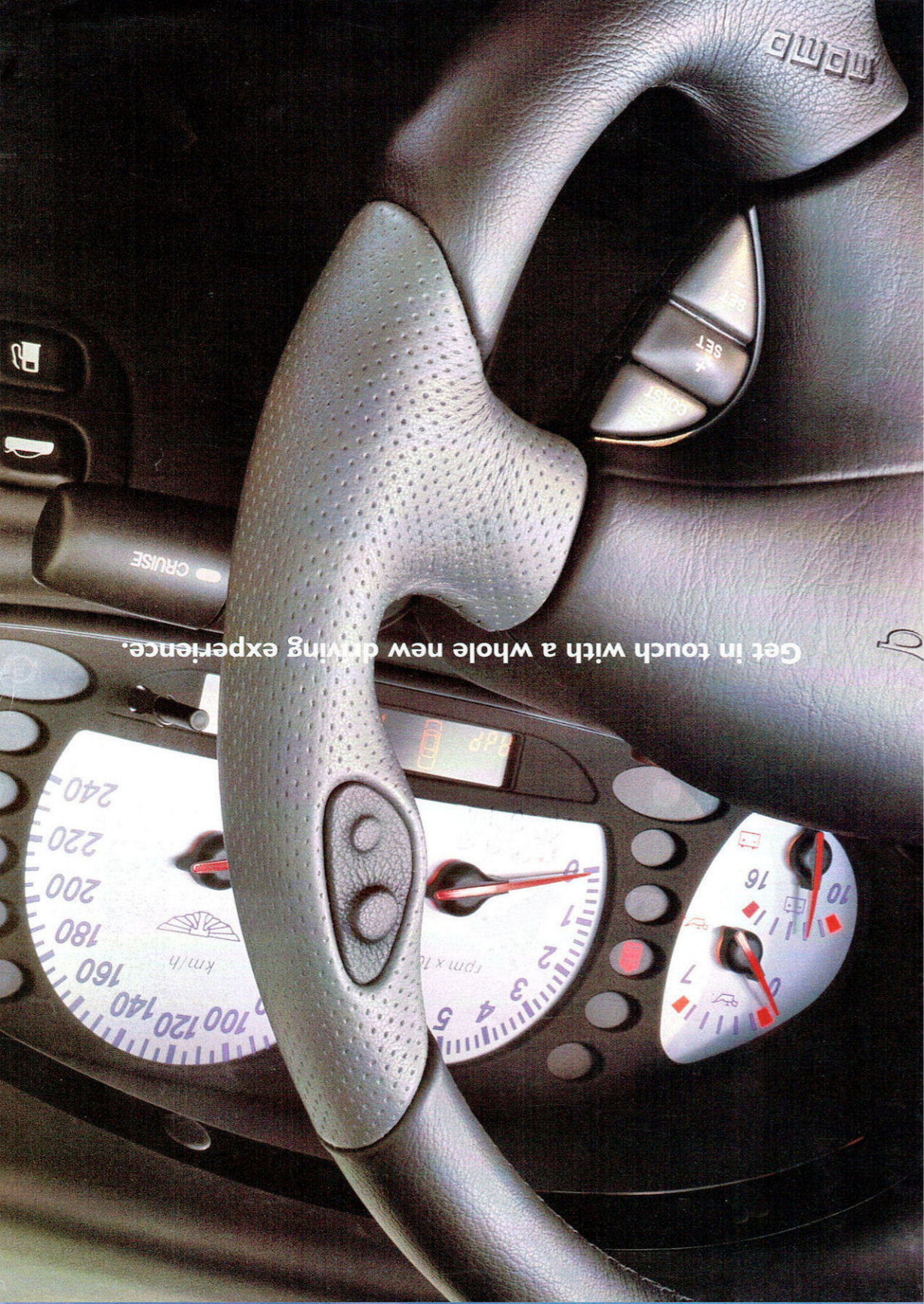
Duratec 2.5 litre 24 valve V6 DOHC engine.  
Standard 5-speed manual transmission.  
Automatic transmission with cruise control (optional).  
European sports tuned 4-wheel independent suspension.  
Perimeter alarm and engine immobiliser.  
ABS brakes and Traction Control.  
Front and side airbags for driver and front seat passenger.  
16 x 6.5 in. 6-spoke alloy wheels.  
Sports contoured cloth seats (leather optional).  
Semi-automatic climate control.  
Quality AM/FM stereo radio/cassette with optional 6-stack CD.  
Power windows.

200 kW Synergy 5000 V8 Engine.  
Standard 5-speed manual transmission.  
Adaptive auto. transmission with ESS (Electronic Sports Shift) optional.  
Sports suspension with IRS and limited slip differential.  
P235/45ZR 17 tyres on 17-inch alloy wheels  
Unique T-Series brake package with Anti-lock Braking System (ABS).  
Black/grey leather Momo steering wheel.  
Smartshield security system.  
Warm Charcoal sports cloth seat trim.  
Climate control air conditioning.  
Quality audio system with 6-stack CD.  
Driver and passenger airbags.

220 kW Synergy 5000 V8 Engine.  
Adaptive auto. transmission with ESS (Electronic Sports Shift).  
Unique suspension with Koni 82 Series shock absorbers and IRS with variable rate rear springs.  
P245/40ZR 18 tyres on 18-inch wheels.  
Unique T-Series brake package with ABS and Traction Control.  
Black/grey leather Momo steering wheel.  
Smartshield security system.  
Rich Aubergine or Charcoal leather interior trim.  
Climate control air conditioning.  
Premium audio system with 6-stack CD.  
6 way power driver's seat.  
Driver and passenger airbags.

200 kW Synergy 5000 V8 Engine.  
Adaptive auto. transmission with ESS (Electronic Sports Shift).  
Unique TL50 suspension with Koni 82 Series shock absorbers and IRS with variable rate rear springs.  
P245/40ZR 18 tyres on 18-inch wheels.  
Unique T-Series brake package with ABS and Traction Control.  
Black/grey leather Momo steering wheel.  
Smartshield security system.  
Rich Aubergine or Charcoal leather interior trim.  
Climate control air conditioning.  
Premium audio system with 6-stack CD.  
6 way power driver's seat.  
Driver and passenger airbags.





Get in touch with a whole new driving experience.

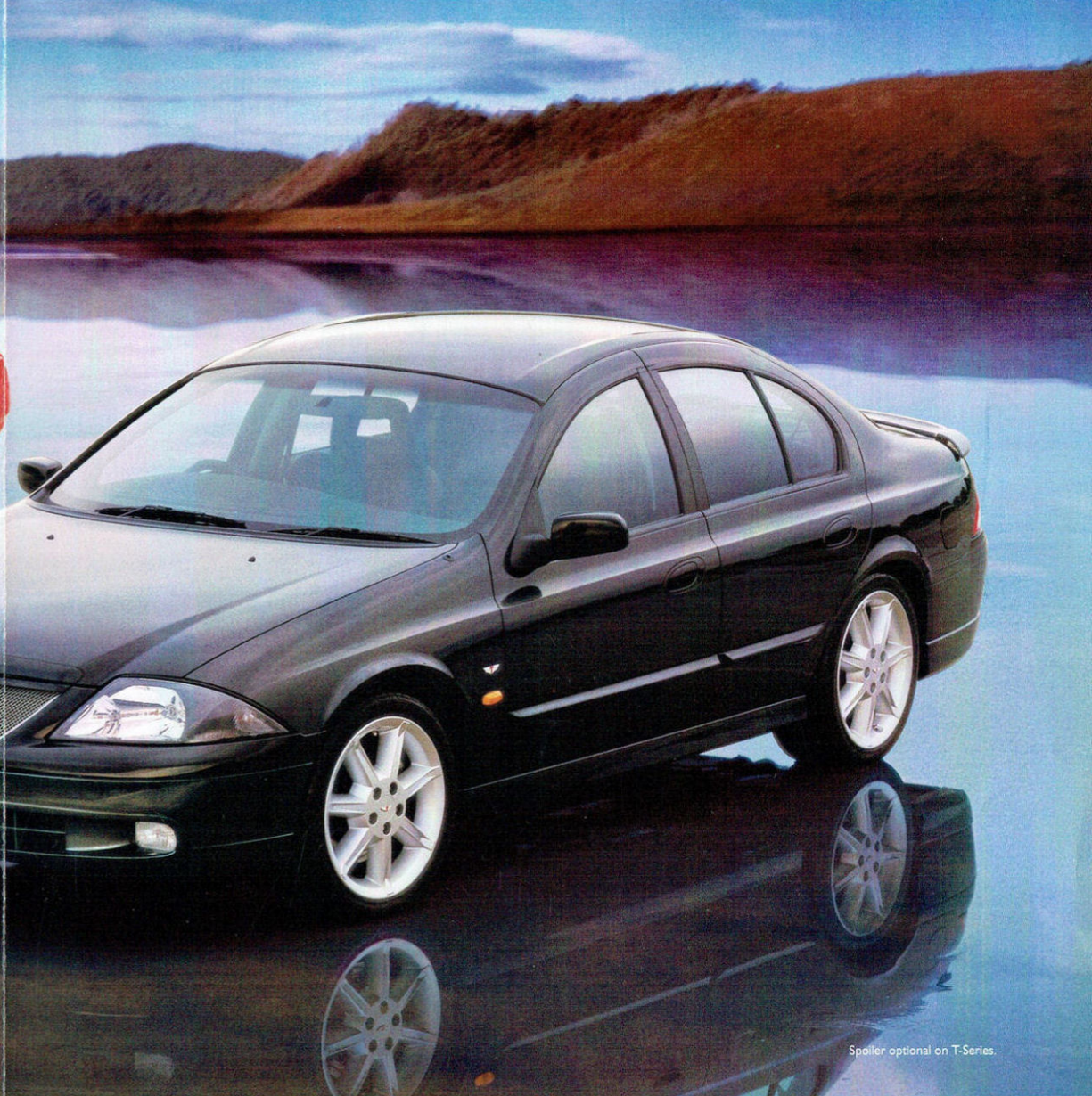
This brochure is designed to provide you with a general introduction to the FTE Products (including available optional equipment) referred to, and should be read in conjunction with the latest specification sheet. Because of changes in conditions and circumstances Ford reserves the right, subject to all applicable laws, at any time, at its discretion, and without notice, to discontinue or change the features, designs, materials, colours and other specifications and the price of their products, and to temporarily withdraw any such product from the market without incurring any liability to any prospective purchaser of their products. The latest specification sheet should be referred to for information on the availability, ordering and use of optional equipment. Always consult an Authorised FTE Dealer for the latest information with respect to features, specifications, prices, optional equipment and availability before deciding to place an order. FORD MOTOR COMPANY OF AUSTRALIA LIMITED (A.C.N. 004 116 223) Registered Office: 1735 Sydney Road, Campbellfield, Victoria 3061, Australia. #Conditions and exclusions apply. See your Authorised FTE Dealer for details. European Cougar pictured in this brochure. Australian Cougar has equivalent features. Printed September 1999. FCL 7714



To register for priority FTE information phone 1800 035 666 or visit [www.fte.ford.com.au](http://www.fte.ford.com.au)

City FTE Sydney 75-85 Crown St Sydney NSW 2000 02 9332 8332	City FTE Melbourne 734 Elizabeth St Melbourne Vic 3000 03 9345 1600	FTE Doncaster 825 Doncaster Rd Doncaster Vic 3108 03 9840 6488	FTE Southport 292 Nerang Rd Southport QLD 4215 07 5582 7700	FTE Brisbane 150 Leichhardt St Springhill QLD 4000 07 3000 4444	FTE Townsville 77 Charters Towers Rd Hermit Park QLD 4810 07 4750 0470	FTE Newcastle Cnr Tudor & Gordon Ave Hamilton NSW 2303 1800 220 500	FTE Launceston Cnr Lower Charles & Williams St Launceston Tas 7250 03 6323 7060	FTE Canberra 24 Lonsdale St Braddon ACT 2612 02 6267 1699	FTE Ryde 2-16 Blaxland Rd Ryde NSW 2112 02 9859 4311	FTE Oakleigh Cnr Ferrtree Gully Rd & Princes Hwy Oakleigh Vic 3166 03 9564 3855	FTE Liverpool Cnr Hume Hwy & Todman Rd Warwick Farm NSW 2170 02 9828 8090
--	--	---	--	--	---	--	--	--	---	--	--

Check this list to find the FTE Dealer nearest you.



Spoiler optional on T-Series.

## Exciting cars are just the beginning.

It is an attitude, a philosophy. It's a whole new way of meeting the expectations of those who know that driving is about a whole lot more than merely moving from point A to point B.

FTE is a new venture from Ford and Tickford,

Ford's partner in performance engineering and vehicle refinement.

FTE is all about exciting cars and the rewarding ownership experience that goes with them. With the T-Series, for example, you can, via the internet,

track your car through the build process, and even visit our plant to help with the finishing touches. To deliver a unique ownership experience, Ford has created dedicated FTE centres throughout Australia. At these FTE dealerships you'll find a car culture, a dedicated commitment to all things automotive.

The experience continues long after you take delivery of your vehicle. You will enjoy special privileges when it's time for regular vehicle service and you will be entitled to FTE Premium Assist, a package of car-related benefits and other exclusive ownership services.



## Cougar will excite your deepest driving instincts.

The fresh New Edge styling is aerodynamically efficient to slice through the air. The stance is low and taut. New Ford Cougar is designed to quicken your pulse whenever you want it to.

Strong and spirited,



yet smooth, refined and deceptively quiet, Cougar's powerful 2.5 litre V6 DOHC engine delivers instantaneous throttle response and is delightfully free revving. The slick close-ratio manual transmission brilliantly utilises Ford Cougar's low-speed torque. Inside is rarefied, fluent. Everything looks, sounds,

feels, even smells right. The sports seats provide the perfect fit and grip for people who love to drive. Front and side airbags help to protect you and the front seat passenger. And when it's late and you just want to get home, Cougar is supple, reassuring and comfortable.



Fully equipped Cougar sports cockpit.

A car of many moods. The car for those who know that while life is an open road, how you get there really counts.



Spoiler optional on T-Series.

### Fast cars built slowly.

With the T-Series, Ford and Tickford engineers have created a new high level of sophisticated motoring. Each model makes an impressive statement about style, performance and luxury.

Each is an expression of engineering precision and the result of the most painstaking attention to detail. Every engine is meticulously hand-assembled. It is the



The TS50's 220kW Synergy 5000 V8 engine.

way the car looks and behaves on the road, its stance and the feeling it gives you every time you hold the steering wheel.

### Engine synergy.

Part of that special feeling comes from the Synergy 5000 V8 engine that is at the heart of every T-Series model. Each engine is individually numbered and is identified by a special build plate mounted under the hood. As the name suggests, these engines are the sum of all their parts. On the TS50 model, that means aluminium cylinder heads, unique camshaft,

a large, easy breathing throttle body, high flow catalysts, low restriction exhaust manifolds and low friction motor-sport roller rockers. They are just some of the things our engineers have done to make these one of the most powerful and

responsive Australian-built 5-litre V8 engines ever.

### Change gears like Schumacher.

The T-Series also brings Australian driving enthu-

siasts the pleasures of an automatic transmission equipped with Electronic Sports Shift (ESS)\*. In its normal guise, the auto transmission is an adaptive shift unit with five shift maps. But when you switch

to ESS the fun really starts. It's motor sport technology that gives the driver

a pseudo-manual transmission, allowing gear positions to be maintained or changed from a thumb button on the steering wheel. With this kind of serious performance, you'd expect to get brakes and suspension systems to match. You do. And the T-Series also comes with interior appointments that make you feel, at the end of even the longest journey, like you want to do it all over again.

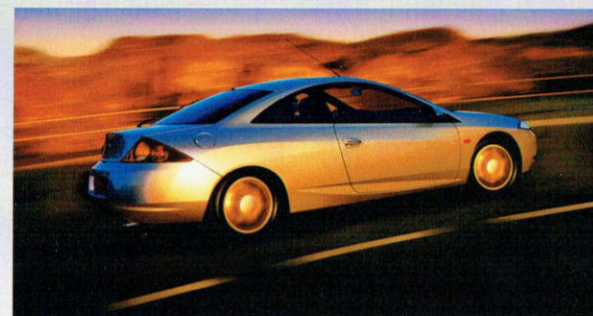


ESS steering wheel control.



All T-Series are equipped with 329mm diameter x 28mm wide front disc rotors with curved venting and grooved face for excellent anti-fade performance.

\*Automatic transmission (including ESS) optional on TE50.



COUGAR

Duratec 2.5 litre 24 valve V6 DOHC engine. Standard 5-speed manual transmission. Automatic transmission with cruise control (optional). European sports tuned 4-wheel independent suspension. Perimeter alarm and engine immobiliser. ABS brakes and Traction Control. Front and side airbags for driver and front seat passenger. 16 x 6.5 in. 6-spoke alloy wheels. Sports contoured cloth seats (leather optional). Semi-automatic climate control. Quality AM/FM stereo radio/cassette with optional 6-stack CD. Power windows.



TE50

200 kW Synergy 5000 V8 Engine. Standard 5-speed manual transmission. Adaptive auto. transmission with ESS (Electronic Sports Shift) optional. Sports suspension with IRS and limited slip differential. P235/45ZR 17 tyres on 17-inch alloy wheels. Unique T-Series brake package with Anti-lock Braking System (ABS). Black/grey leather Momo steering wheel. Smartshield security system. Warm Charcoal sports cloth seat trim. Climate control air conditioning. Quality audio system with 6-stack CD. Driver and passenger airbags.



TS50

220 kW Synergy 5000 V8 Engine. Adaptive auto. transmission with ESS (Electronic Sports Shift). Unique suspension with Koni 82 Series shock absorbers and IRS with variable rate rear springs. P245/40ZR 18 tyres on 18-inch wheels. Unique T-Series brake package with ABS and Traction Control. Black/grey leather Momo steering wheel. Smartshield security system. Rich Aubergine or Charcoal leather interior trim. Climate control air conditioning. Premium audio system with 6-stack CD. 6 way power driver's seat. Driver and passenger airbags.



TL50

200 kW Synergy 5000 V8 Engine. Adaptive auto. transmission with ESS (Electronic Sports Shift). Unique TL50 suspension with Koni 82 Series shock absorbers and IRS with variable rate rear springs. P245/40ZR 18 tyres on 18-inch wheels. Unique T-Series brake package with ABS and Traction Control. Black/grey leather Momo steering wheel. Smartshield security system. Rich Aubergine or Charcoal leather interior trim. Climate control air conditioning. Premium audio system with 6-stack CD. 6 way power driver's seat. Driver and passenger airbags.