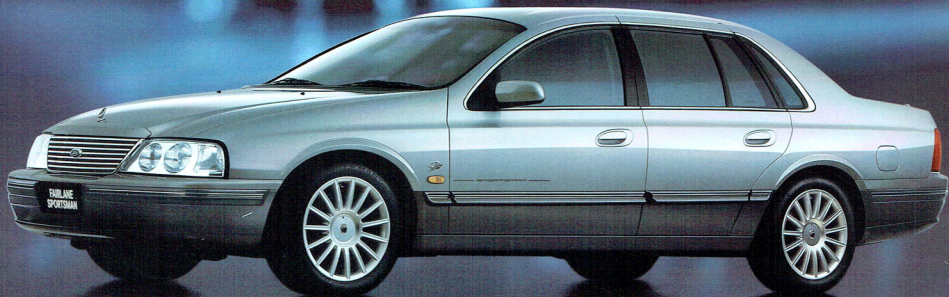


# FAIRLANE SPORTSMAN



We have ignition

# FAIRLANE SPORTSMAN

## ADDITIONAL SPORTSMAN FEATURES INCLUDE:

- 17" Elegance alloy wheels
- Two-tone paint combinations\*
- LTD luxury Howe leather seats
- 10 way power seats (driver and front passenger)
- Driver memory seat and mirrors
- Momo luxury steering wheel in wood and leather
- Floor mats



Luxury leather trim.



Luxury Momo steering wheel.

## STANDARD FEATURES INCLUDE:

- 4.0 litre OHC 6-cylinder with Variable Cam Timing (VCT)
- 250 watt, 11 speaker element Premium audio system with 6-disc CD player
- Automatic climate control
- Message display centre for temperature, trip computer and speed warnings
- Bosch 4-channel, 4-wheel ABS system with traction control
- Driver and passenger airbags
- 60/40 split fold rear seat back with fold down centre armrest
- 15,000 km service intervals
- \*Scheduled Servicing to 60,000 km\*\*
- 3-year 24-hour Ford Prestige Roadside Assistance Plan\*



Distinctive two-tone exterior colour scheme†



Unique 'Elegance' 17" wheel.

## THE LOOK AND FEEL OF UNSURPASSED LUXURY.

➤ The Fairlane Sportsman is a superbly stylish, very individual statement about accomplishment and taste. The distinctive two-tone exterior colour scheme† and impressive range of extras instantly distinguish this luxury sedan from all others. You may rest assured that the Fairlane Sportsman is recognised as a very real symbol of achievement.

So visit us on the internet at [www.ford.com.au](http://www.ford.com.au) or you can ring on free call 1800 503 673 for more details.

†Limited selection of two-tone paint colour combinations available. Fairlane Sportsman also available in full range of Fairlane solid colours. \*Cover parts, labour and lubricants required to complete the first four scheduled services as described in the Scheduled Servicing section of the Customer Assistance, Warranty and Servicing Guide. †Conditions and exclusions apply. See your authorized Ford Dealer for details.

This brochure is designed to provide you with a general introduction to the Ford Products referred to, and should be read in conjunction with the latest specification sheet. Because of changes in conditions and circumstances Ford\* reserves the right, subject to all applicable laws, at any time, at its discretion, and without notice, to discontinue or change the features, design, materials, colours and other specifications and the prices of these products, and to either permanently or temporarily withdraw any such products from the market without incurring any liability to any prospective purchaser or purchaser. The latest specification sheet should be referred to for information on the availability, ordering and use of optional equipment. Always consult an authorized Ford Dealer for the latest information with respect to features, special orders, prices, optional equipment and availability before deciding to place an order. \*FORD MOTOR COMPANY OF AUSTRALIA LIMITED, (A.B.N. 30 004 116 223) Registered Office: 1720 Sydney Road, Campbellfield, Victoria 3061, Australia. Printed August 2001. FCL 3498