

2007 FIVE HUNDRED

SEL, Limited



Built for life in Canada

2007 Five Hundred

It's more than just comfortable, confident and convenient. It's safe. And for good reason. Ford Five Hundred's innovative vehicle structure was crash-simulated on a supercomputer to ensure components and complete systems are positioned to provide optimal occupant protection. How much do you, your family and your friends value safety? Think about it the next time a vehicle near you starts to slip and slide. Then feel that much better knowing you, and those close to you, are well-fortified in Ford Five Hundred.

It's Top-Notch

First sedan in its class* with AWD
Class-exclusive rollover sensor, part of available
2-row Safety Canopy™ System
Class-exclusive SPACE Architecture™
Best-in-class passenger and interior volume
Best-in-class cargo flexibility
Largest trunk of any sedan in Canada
Class-exclusive 6-speed automatic

*Standard 5-passenger Large Car class.



Five Hundred Limited, with optional Chrome Package, in gleaming Alloy Metallic.

A Commanding Presence

Sitting behind the wheel of Five Hundred means you're not only part of the action, you're emphatically in control of it. Command Seating™ provides you with extraordinary visibility all around. In the Limited, you're treated to the luxury of a leather-trimmed, 8-way power driver's seat with 2 heat settings and 2-user memory. Leather trim extends to the shift knob and steering wheel, which includes a second set of audio controls. With Dual-zone Electronic Automatic Temperature Control, you and your front passenger can choose settings independently. Uncommon courtesy.



ATMOSPHERE ON HIGH. Fully retract the available power moonroof's tinted glass or simply tilt it up. You also get a mini-overhead console with map lights and a storage bin.



NAVIGATE NATIONWIDE.* Use the optional DVD Navigation System (shown left, in centre console). Its 6.5" LCD illuminates sharp colour graphics and touch-screen prompts. Over 20 audible and visual functions are provided.

*Contact your local Ford of Canada Dealer for mapping information.

A STEREO SENSATION. Five Hundred SEL tunes you in with an AM/FM stereo, CD player and 4 speakers. On Limited, the audio ante is upped to an 8-speaker Audiophile® system and 6-disc in-dash CD changer with MP3 capability.



Particularly Pleasing

The luxury of exceptional space can do wonders for the human spirit. Ford Five Hundred takes this knowledge and applies it in abundance. For total passenger volume and rear-seat leg and head room, you won't find a more spacious sedan in its class. Ample seating gives 5 adults room to really stretch out and relax, while the generous glass area gives the full-size interior an airy feel. Rear-seat passengers enjoy large footwells under the front seats courtesy of SPACE Architecture™. Comfort and luxury are the order of the day — whether you're enjoying responsive performance from the driver's seat or you're just along for the smooth ride.



IT'S THE BIGGEST. Five Hundred boasts the largest trunk of any sedan in Canada. With its low lift-over height, it can easily handle the equipment of up to 8 golfers.



IT'S REALLY FLEXIBLE. When you flatten the split-folding rear seatback and fold down the front-passenger seat, Five Hundred asserts its sensational versatility — carry items up to 2.74 m (9') in length.



IT HOLDS EVERYTHING NEATLY. Stow smaller-scale items within each door's integrated pocket, the centre console, or a covered storage bin that's cleverly integrated atop the instrument panel. 8 beverage holders are also part and parcel of Five Hundred.

Front-Wheel Or All-Wheel Drive

You choose. The front-wheel-drive Five Hundred comes with a 6-speed automatic that has 2 overdrive gears and actually “learns” your driving habits over time. If traction is of paramount concern, All-Wheel Drive (AWD) is optional. As soon as wheel slip is detected, the class-exclusive HALDEX® AWD system reacts. AWD also equips you with an advanced Continuously Variable Transmission (CVT), plus All-Speed Traction Control. No matter your choice, a 3.0L Duratec 30 V6 optimizes performance: 203 hp and 207 lb.-ft. of torque have never felt this good.

HALDEX is a registered trademark owned by Haldex, AB.

AWD AT THE READY, EVEN WHEN THE GOING GETS DRY. If you buy into the misconception that AWD only benefits you on slippery roads, you’ll miss the whole point. Over varying surfaces, during rapid acceleration and while cornering quickly, AWD seamlessly distributes power between the front and rear wheels to give you increased control. You probably won’t be aware it’s working – you’ll just savour the rush.

STOP STRAIGHT. 4-wheel disc brakes with an Anti-lock Brake System (ABS) and Electronic Brakeforce Distribution are standard.

SMOOTH-AS-CVT RESPONSE. Unlike conventional transmissions, the available Continuously Variable Transmission (CVT) has no gears. An intricate steel-link belt connects 2 variable-size, high-strength steel-alloy pulleys. The ratio of the 2 pulleys is continuously varied to keep your engine in its most efficient range and your drive velvet-like.

TERRIFIC FUEL ECONOMY. Estimated fuel consumption for Five Hundred with front-wheel drive (FWD) is 11.2L/100 km city and 7.5L/100 km hwy.; for All-Wheel Drive (AWD), it’s 12.6L/100 km city and 8.6L/100 km hwy.*

*Fuel consumption ratings based on Transport Canada approved test methods.



One Of The Safest You Can Get

You heard it once, but it doesn't hurt to hear it again: Ford Five Hundred is a leader in safety. And so much of it has to do with the things you don't see. Take the laser-welded steel sheets, for instance. They're key to helping manage energy in frontal collisions. Not only are they stamped directly into the body's structure, they're of varying thicknesses — some areas, such as the front frame rails, are more substantial for extra strength. Details do make the difference.

BEFORE THE 3RD-PARTY EXAMS, IT FIRST HAD TO EXCEL WITH FORD. Ford Engineering made maximum use of a Total Vehicle Geometry process during the development of Five Hundred, which resulted in some of the best-quality prototypes in Ford Motor Company history. That intense effort was bolstered by more than 7.24 million kilometres (4.5 million miles) of durability testing.

AN ULTRA-RIGID CHASSIS is the basis of Five Hundred's solid safety structure. Crash modeling on a Cray® supercomputer determined that mounting the front bumper plate only to the outer portion of the frame rails promotes a more even collapse of energy-absorbing structures and reduces passenger-compartment intrusion.

Cray is a registered trademark of Cray, Inc.

STANDARD SAFETY AND SECURITY FEATURES also include: keyless-entry keypad; remote keyless illuminated entry; auto-dimming rearview mirror; LATCH (lower anchors and tether anchors for child-safety seats); child-safety rear door locks; and SecuriLock® passive anti-theft system.

SPACE ARCHITECTURE™ (Side Protection And Cabin Enhancement) is a class-exclusive comprised of advanced structural elements — including a hydro-formed cross-car beam running between door frames to strengthen each bodyside.

PERSONAL SAFETY SYSTEM® for driver and front passenger includes: dual-stage front airbags, safety belt pretensioners, safety belt energy-management retractors, safety belt usage sensors, driver's-seat position sensor, crash severity sensor, restraint control module and Front-Passenger Sensing System.



2-ROW SAFETY CANOPY™ SYSTEM — WITH A CLASS-EXCLUSIVE ROLLOVER DETECTION SENSOR — is part of the optional safety packages, which include front-seat side airbags. The Safety Canopy's side-curtain airbags add outboard-seating protection to both rows.

THE ADAPTIVE STEERING COLUMN minimizes the effect of crash forces, collapsing in different ways depending on the driver's-seat position and safety belt status. On AWD models, even the patent-pending driveshaft is collapsible.

SIDE-INTRUSION DOOR BEAMS extend across the 2 strongest areas of the door frame to enhance impact resistance. And laser-welded side pillars help redirect crash forces underneath seats.



MODEL LINEUP



SEL

Select standard content:

Bright-Painted Grille with Chrome Surround
 Body-Colour Power Sideview Mirrors
 Air Conditioning
 Message Centre with Compass
 Steering Wheel-Mounted Cruise and Audio Controls
 Auto-Dimming Rearview Mirror
 Heat and Air Conditioning Ducts in Rear of Front Centre Console for Rear-Seat Passengers
 AM/FM Stereo with CD/Clock
 Leather-Wrapped Steering Wheel and Shift Knob
 Rear-Seat Armrest with Beverage Holders
 6-Way Power Driver's Seat with Manual Lumbar Support
 2-Way Power Front-Passenger Fold-Down Seat
 Woodgrain-Appearance Appliqués on Instrument Panel and Console
 Fixed Rear-Seat Head Restraints
 17" 7-Spoke Aluminum Wheels
 P215/60R17 Tires



LIMITED

Includes SEL content, plus:

Anti-Theft Perimeter Alarm
 Automatic Headlamps
 Fog Lamps
 Chrome Power, Heated Sideview Mirrors with Memory
 Security Approach Lamps
 Reverse Sensing System
 Dual-Zone Electronic Automatic Temperature Control
 Memory for Driver's Seat and Sideview Mirrors
 Power-Adjustable Pedals with Memory
 Analog Clock in Instrument Panel
 Outside Temperature Display
 Universal Garage Door Opener
 Audiophile® Sound System with AM/FM Stereo, Subwoofer and 6-Disc In-Dash CD Changer with MP3 Capability
 4-Way Power Front-Passenger Fold-Down Seat with Manual Lumbar
 "Shirred" Leather-Trimmed Seats
 8-Way Power Driver's Seat with Memory
 Heated Driver and Front-Passenger Seats
 Adjustable Rear-Seat Head Restraints
 Rear-Seat Centre Armrest with Beverage Holders and Storage
 18" 8-Spoke Bright-Aluminum Wheels
 P225/55R18 Pirelli Tires

Audiophile is a registered trademark of Audiophile, Inc.

SPECIFICATIONS

STANDARD FEATURES

MECHANICAL

3.0L Duratec 30 24-valve DOHC V6 engine
 4-wheel disc Anti-lock Brake System (ABS)
 Compact spare tire
 Front-wheel drive
 Power rack-and-pinion steering
 Traction Control

SAFETY/SECURITY

Personal Safety System® for driver and front passenger – Includes dual-stage front airbags,* safety belt pretensioners, safety belt energy-management retractors, safety belt usage sensors, driver's-seat position sensor, crash severity sensor, restraint control module and Front-Passenger Sensing System
 Adaptive Steering Column
 Battery saver
 Belt-Minder® safety belt reminder
 Child-safety rear door locks
 Illuminated entry
 LATCH – Lower anchors and tether anchors for child-safety seats
 Remote keyless-entry system with driver's door-mounted keypad
 SecuriLock® passive anti-theft system
 SPACE Architecture™ (Side Protection And Cabin Enhancement)

SEATING

60/40 split fold-down rear seat
 Command Seating™
 Front bucket seats, including 6-way power driver's seat with manual lumbar
 Rear-seat armrest with beverage holders

INTERIOR

Accessory delay
 Beverage holders – 8
 Floor mats – Front and rear carpeted
 Front centre floor console with armrest, beverage holders and storage
 Front overhead console with lights and sunglasses holder
 Instrumentation – Speedometer, tachometer, temperature gauge and fuel gauge
 Power door locks and windows with one-touch-up/-down driver's-side feature
 Power points – 2
 Power remote trunk release
 Rear-seat reading lights
 Sliding sun visors with illuminated vanity mirrors
 Steering wheel-mounted cruise and audio controls
 Tilt steering wheel

EXTERIOR

Body-colour door handles
 Body-colour power sideview mirrors
 Bright-painted grille with chrome surround
 Chrome trim on front and rear fascias and side windows
 Rear-window defroster

*Always wear your safety belt and secure children in the rear seat.

SPECIFICATIONS

FEATURES & OPTIONS

SEL	
LIMITED	
MECHANICAL	
●	6-speed automatic transmission with front-wheel drive
○	Continuously Variable Transmission with All-Wheel Drive
●	17" 7-spoke aluminum wheels
—	18" 8-spoke bright-aluminum wheels
○	18" 8-spoke chrome-clad aluminum wheels
●	P215/60R17 tires
○	P225/55R18 Pirelli tires
SEATING	
○	Leather-trimmed seats with heated front seats**
INTERIOR	
—	Cargo net
○	DVD Navigation System – Includes AM/FM stereo receiver, 6-disc in-dash CD changer, 180-watt amplifier, and 12 speakers, including subwoofer†
EXTERIOR	
○	Power moonroof
○	Reverse Sensing System
PACKAGES	
○	Chrome Package – Includes chrome-mesh grille and 18" 8-spoke chrome-clad aluminum wheels
○	Convenience Package – Includes AM/FM stereo and 6-disc in-dash CD changer with MP3 capability, Dual-zone Electronic Automatic Temperature Control, automatic headlamps and fog lamps
○	Interior Power Package – Includes 8-way power driver's seat and power-adjustable pedals
—	Safety Package – Includes Safety Canopy™ System with rollover sensor and front-seat side airbags
○	Safety and Security Package – Includes Safety Canopy System with rollover sensor, front-seat side airbags, anti-theft perimeter alarm, heated sideview mirrors, and security approach lamps

● Standard ○ Optional — Not Available

**Requires Convenience Package and Interior Power Package on SEL. †Requires Convenience Package on SEL.

ENGINE

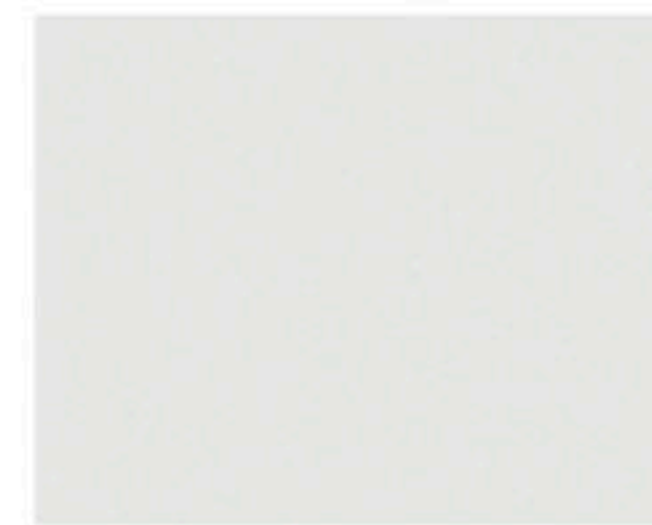
3.0L 24-VALVE DURATEC 30 V6 ENGINE	
Horsepower (hp @ rpm)	203 @ 5750
Torque (lb.-ft. @ rpm)	207 @ 4500

ESTIMATED FUEL CONSUMPTION RATINGS††

6-speed automatic w/FWD	11.2L/100 km city and 7.5L/100 km hwy. (25 mpg city/38 hwy.)
CVT with AWD	12.6L/100 km city and 8.6L/100 km hwy. (22 mpg city/33 hwy.)

††Fuel consumption ratings based on Transport Canada approved test methods.

EXTERIOR COLOURS



Oxford White



Dune Pearl Metallic



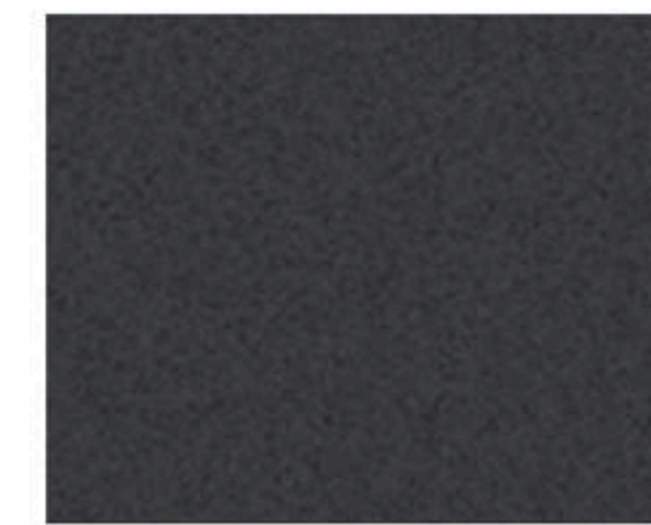
Merlot Metallic (Limited only)



Titanium Green Metallic



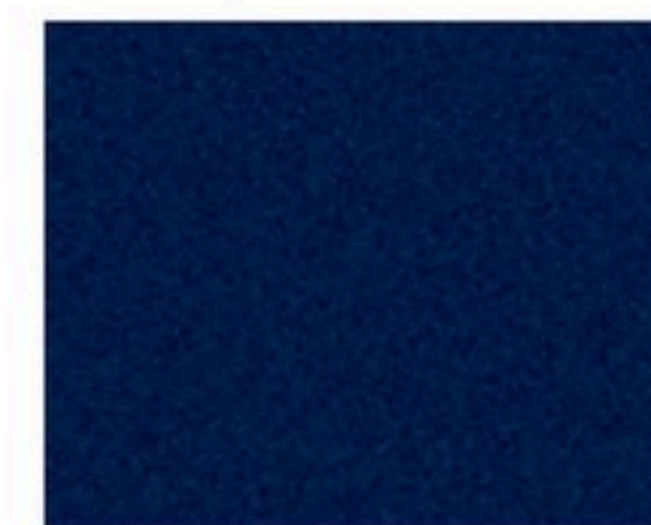
Silver Birch Metallic



Alloy Metallic



Redfire Metallic



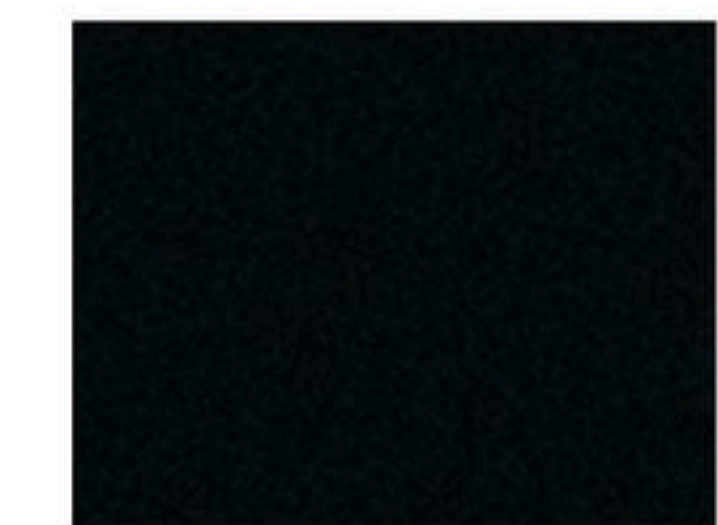
Dark Blue Pearl Metallic

INTERIOR COLOURS

PEBBLE	
SHALE	
BLACK	

SEL	
●	Oxford White
●	Dune Pearl Metallic
●	Redfire Metallic
●	Titanium Green Metallic
●	Dark Blue Pearl Metallic
●	Silver Birch Metallic
●	Alloy Metallic
●	Black

LIMITED	
●	Oxford White
●	Dune Pearl Metallic
●	Redfire Metallic
●	Merlot Metallic
●	Titanium Green Metallic
●	Dark Blue Pearl Metallic
●	Silver Birch Metallic
●	Alloy Metallic
●	Black



Black

WHEELS



17" 7-Spoke Aluminum
Standard on SEL



18" 8-Spoke Bright-Aluminum
Standard on Limited



18" 8-Spoke Chrome-Clad Aluminum
Available on SEL and Limited

Ford uses clearcoat paint for beauty and protection. Colours shown are representative only. Not all colours are available on all models. See your dealer for actual paint/trim options.

2007 FORD FIVE HUNDRED

- Space, comfort and luxury for the whole family
 - HALDEX® Electronic All-Wheel Drive
- CVT coupled with the powerful Duratec 30 for surprising fuel economy and a smooth ride
- Class-exclusive Command Seating™ for a more comfortable ride
- Segment-exclusive fold-down front-passenger seat
 - Best-in-class passenger and interior volume
 - Best-in-class rear-seat head and leg room
 - Best-in-class trunk volume

For more information on
Ford of Canada and Ford products,
please visit our website:



Our commitment to you... Peace-of-Mind Protection

Basic Coverage

3 years/60,000 km

Powertrain Warranty

5 years/100,000 km

Corrosion Warranty

5 years/unlimited distance

Roadside Assistance

5 years/100,000 km*

Certain conditions apply. For more information on these warranties and coverages, ask your local Ford of Canada Dealer or visit www.ford.ca. *No additional cost.

For prompt, courteous answers to your questions:

Ford Customer Relationship Centre
1-800-565-3673
Ford Credit Customer Service Centre
1-877-636-7346

Please Note: The electronic version of the Ford of Canada vehicle brochure is a condensed version of the original printed version.

Competitive comparisons are based on 2006 competitive models, publicly available information and Ford data at the time of printing of the 2007 original printed version. Some features discussed may be optional. Vehicles shown may contain optional equipment. Features shown may be offered only in combination with other options or subject to additional ordering requirements or limitations. Dimensions shown may vary due to optional features and/or production variability. Following publication of the 2007 original printed brochure, certain changes in standard equipment, options and the like, or product delays may have occurred which would not be included in these pages. Your Ford of Canada Dealer is your best source for up-to-date information. Ford Motor Company of Canada, Limited, reserves the right to change product specifications at any time without incurring obligations. Colours may not be exactly as illustrated. Please see your sales consultant for specific colour and model availability. Please visit your local dealer or www.ford.ca for complete vehicle details.