

2008 FUSION



Built for life in Canada

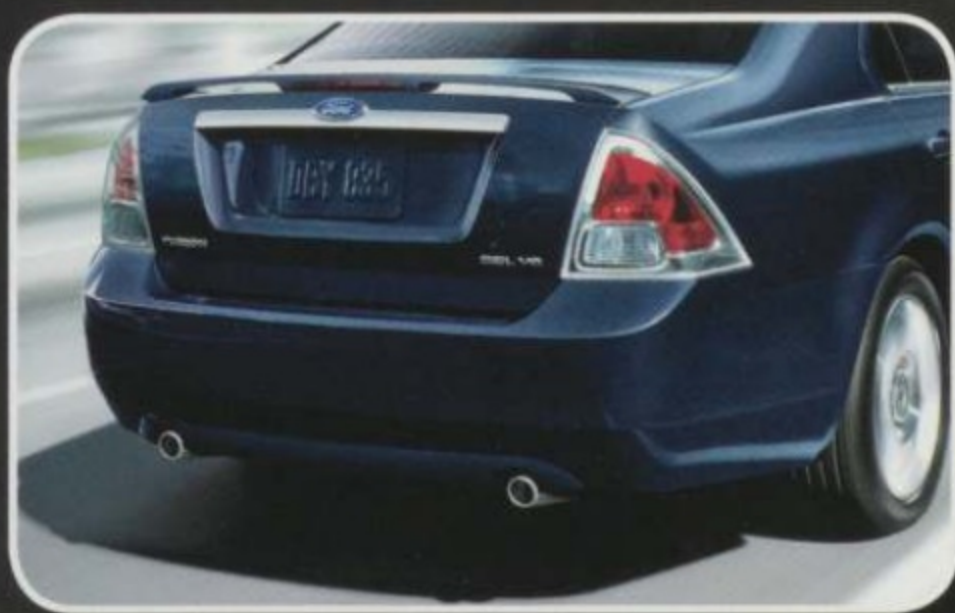
Fusion. Like nothing else.

Nothing else looks like it. And nothing else satisfies like it. From its gleaming grille to its distinctive taillamps, Fusion leaves a lasting impression. So will you, especially with the road-gripping Intelligent All-Wheel Drive that's available for utmost confidence and sure-footed fun. Just in case, all safety features come standard — including 6 airbags and 4-wheel disc anti-lock brakes. Going places? Turn to Ford Fusion. In all honesty, nothing else compares.



MULTI-ELEMENT HALOGENS

Fusion's quad-beam halogen headlamps are partly squared and professionally rounded "gems." Their curved, jewel-like lenses flow upward and trace the sleek, sculpted hoodline.



MULTI-ENGAGING DESIGN

Detailed, wraparound taillamps and the optional rear spoiler draw attention. Dual chrome exhaust tips and chrome accents along the beltline captivate all the more on Fusion SEL models equipped with the available 3.0L V6.



No details overlooked

Fusion's fashion sense extends to the inside, where drivers and passengers are treated with just as much attentive pampering. Contrast stitching on the optional leather-trimmed seats is a shining example.



INTAKE VARIABLE CAM TIMING

iVCT is standard on each powerplant to improve response and optimize efficiency. The best of all worlds – with an extremely broad torque curve for on-demand acceleration across the rpm range.



NIMBLE UNDERPINNINGS

An agile 4-wheel independent suspension is complemented by power rack-and-pinion steering that's tuned with you, the driver, in mind. Steering is attached to the subframe, so your every move is quickly relayed to Fusion's muscles.

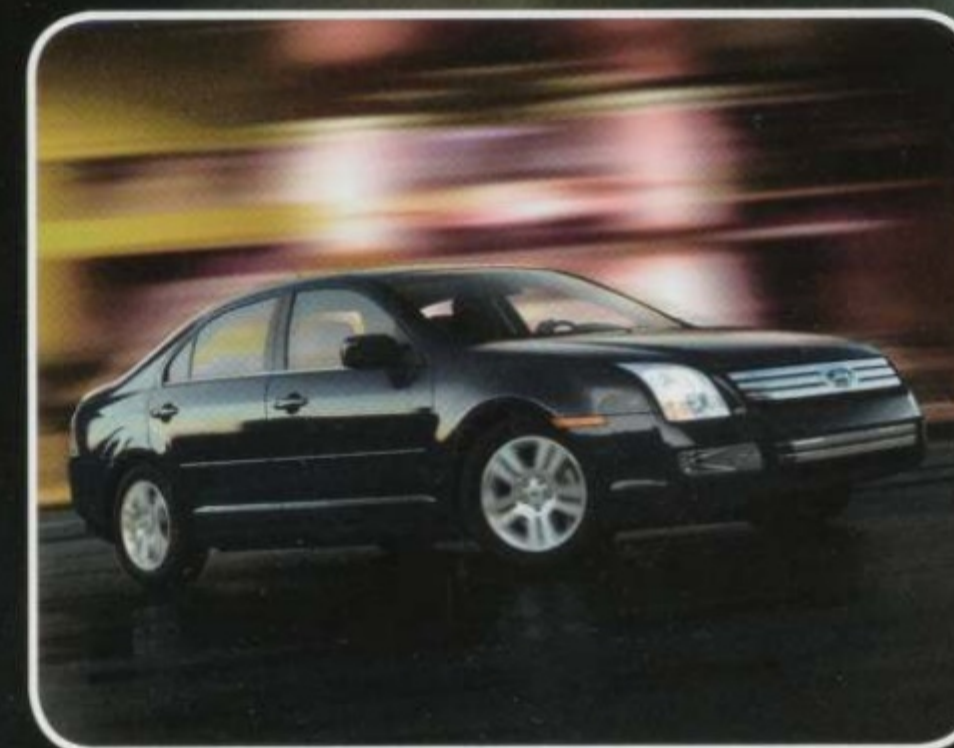
Power spells confidence.

You can handle the boardroom, a bad hair day and anything else life throws at you. But can you handle the road? Of course, with one of 3 advanced Fusion powertrains at your beck and call. Get in gear with the energetic – not to mention efficient – 160-hp I-4 engine and 5-speed manual. You can team the I-4 with the optional 5-speed automatic. Or step up to the available 221-hp V6 with its 6-speed automatic. Each automatic transmission-equipped Fusion features the new One-Touch Intelligent Start. Fusion is engineered to empower.



Dry or damp, **AWD** works wonders.

Take precision to the next level when you outfit your Fusion with available All-Wheel Drive (AWD). Loose gravel, slippery leaves, packed snow, soaking rains, rapid acceleration, or simply any of those twists and turns you encounter when the pavement's dry — AWD distributes the power, promptly and seamlessly, to ensure maximum traction, balanced control and peak performance.



AWD INNER WORKINGS

Here's the lowdown on All-Wheel Drive. It continuously monitors — at a rate of 100 times per second — vehicle speed, throttle and steering angle to exactly distribute torque. Fusion's AWD system can even direct torque side to side on each axle, allowing you to continue in motion even if only one wheel has grip. Moving forward to that next stage in life couldn't be any better.

Me time

doesn't take a backseat.

Feel pampered every day you drive a Fusion. Bolstered front bucket seats translate into a gratifying experience. On SEL, Electronic Automatic Temperature Control maintains a comfortable interior environment. The leather-wrapped steering wheel is tilt/telescoping and incorporates fingertip activation of the secondary set of premium audio controls. Gain greater assurance with the optional Reverse Sensing System. A voice-activated, DVD-based Navigation System – with some 20 different functions – is optional, as are leather-trimmed heated front seats to make Fusion even hotter than its head-turning lines are already telegraphing.



AMBIENT LIGHTING PACKAGE

Provide a touch more atmosphere – in your choice of 7 different hues – whenever the mood strikes. Create an engaging glow in the front and rear footwells along with the front beverage holders. (A colourful, late availability option.)



AUDIO INPUT JACK

Enhance the elation: Turn Fusion's stellar, scientifically situated sound system into an extension of your MP3 player. Simply plug it in to play up your personal tunes.

SIRIUS
SATELLITE RADIO

SIRIUS Satellite Radio

Fusion comes with SIRIUS Satellite Radio, offering you digital-quality channels – including sports, news, entertainment and 100% commercial-free music – all across Canada. You'll even get complimentary online access to SIRIUS with the 6-month prepaid subscription that's included on every Fusion. See your Ford of Canada Dealer or contact SIRIUS at 1-888-539-7474 for more information.

SYNC
Powered by **Microsoft**

Exclusive Ford SYNC™*

Groundbreaking hi-tech innovation: This voice-activated, hands-free communications and entertainment system integrates your Bluetooth®-enabled mobile phone and nearly any portable media player. Visit ford.ca for details.

*Late availability.

Fusion SEL with available Charcoal Black leather-trimmed seating and optional equipment (U.S. model shown).



FLEXIBILITY ON-CALL

While you should always be careful storing anything oversized, the handy fold-flat front-passenger seat allows you to readily transport items up to 2.74-m (9-ft.) long.



MASSIVE, SUBSTANTIAL...

... or really, really big – take your pick to best describe the low-liftover trunk. Reach inside, and simply pull the quick-release levers: The rear seatbacks fold down automatically.



Hold everything

Seems everything's storable somewhere in Fusion. The rear centre armrest balances beverages and folds away upon request. A two-tiered centre console houses an out-of-sight upper level and oversized lower bin. And Fusion's in-dash storage compartment conveniently pops open to protect your cool shades. Perfect accommodations for each and every on-road essential (and all those non-essential extras).

Do whatever you desire.

Dating, day trips, DIY projects. No problem. Fusion versatility borders on boundless. Exactly what you expect inside Ford's first fully digitally designed vehicle – ensuring top-notch quality. Sound insulation under the floor greatly reduces road noise, and climate-control ductwork is of the high-efficiency, ultra-silent variety. Fusion may well be your way to total serenity.

Fusion SEL with available Charcoal Black leather-trimmed seating with contrast stitching and optional equipment.

A lasting impression.

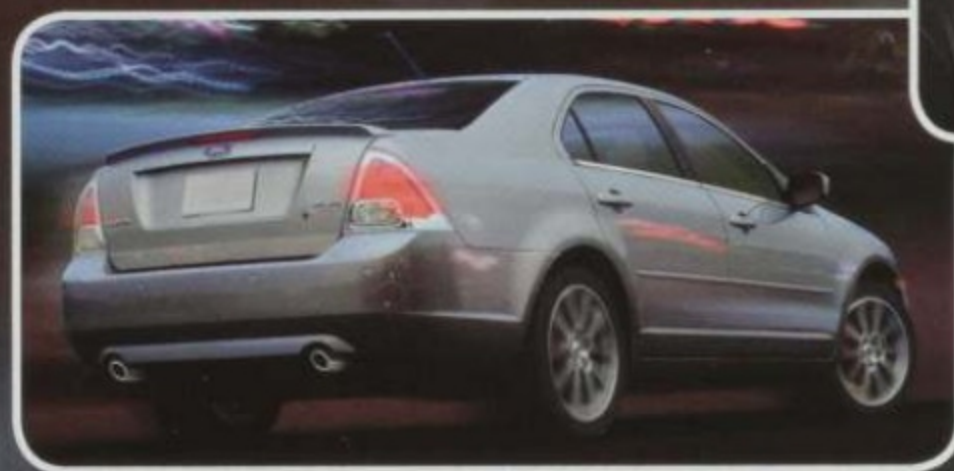
Show the world what you're all about in your own special way. The new Sport Appearance Package is available only in select exterior colours: Black, Redfire Metallic or Silver Birch Metallic. Note the black-chrome grille and the colour-keyed frames around the fog lamps. Wide, all-weather rubber rides on fender-filling, 18" aluminum wheels with painted pockets. Perfect for the sport-tuned suspension – bigger rear stabilizer bar, stiffer springs, plus dampened struts and shocks – that makes for even greater ride and handling performance. Impressive, *and how.*



STAND-OUT STYLE

The Sport Appearance Package* is a truly special option. Charcoal Black interior trim is unique with contrasting red stitching – extending to the leather-wrapped steering wheel and centre console. Select red-splashed cloth seat inserts. Or go for the optional leather-trimmed seating that dazzles with rich red-leather inlays.

*Available on SEL FWD.



SUPER-STUNNING

Also on the Sport Appearance Package, the decklid "lip" spoiler adds a kiss of allure. Inside, there's a brushed-aluminum face surrounding the radio.



Safety isn't an option.

Indeed, every single safety feature comes standard. At its core, Fusion boasts an advanced, energy-absorbing safety cell. Should you ever experience a mishap, the steel cell channels crash forces away from you and your passengers. Carefully constructed crumple zones, side-intrusion door beams, and robust rocker panels play major roles in the protection picture. Particularly important for peace of mind.



The key

Safety smarts extend to Fusion's all-in-one key. It conveniently integrates remote keyless entry and a panic button. And the key's even been encrypted with billions of security codes as a passive anti-theft measure.



The rest of the safety & security story

Fusion houses 6 airbags: 2 dual-stage front airbags, 2 front-seat side airbags, and 2 full-length side-curtain airbags. A 4-wheel disc Anti-lock Brake System (ABS) resists skids to help you maintain control. The Personal Safety System® keeps a constant watch to better protect you and your front passenger in a frontal crash. The Tire Pressure Monitoring System alerts for underinflation; rear door locks can be childproofed; and LATCH eases the securing of child-safety seats. On the security front, the anti-theft perimeter alarm discourages vandalism. SEL models are also standard with security approach lamps under the heated sideview mirrors, plus a class-exclusive, built-in keyless-entry keypad that unlocks at a touch. Fusion's got you covered, for certain.

FUSION SE

Fusion SE has a wealth of great standard features: 4-cylinder engine • One-Touch Intelligent Start (automatic transmissions only) • 6-way power driver seat • Tilt/telescoping steering wheel with cruise and audio controls • AM/FM single-CD/MP3-capable audio system • Tire Pressure Monitoring System • Body-colour power, heated sideview mirrors • 16" wheels, and more

FUSION SEL

In addition to the standard features found on SE, the SEL model includes: Dual exhaust with chrome tips (with V6) • Unique centre stack appliqué • Analog clock with chrome bezel • Electronic Automatic Temperature Control • Leather-wrapped steering wheel • Keyless-entry keypad • Auto-dimming rearview mirror • 17" machined-aluminum wheels • Body-colour power, heated sideview mirrors with security approach lamps, and more



Fusion SEL in Vapour Silver Metallic with optional equipment, and Fusion SE in Black.

SPECIFICATIONS

STANDARD FEATURES

MECHANICAL

Anti-lock Brake System (ABS)
 Front-wheel drive (FWD)
 Power 4-wheel disc brakes
 Power rack-and-pinion steering
 Stabilizer bars — 24-mm front and 16-mm rear (17-mm rear on V6)
 Suspension — Front: independent Short- and Long-Arm
 Suspension — Rear: multilink independent

SAFETY AND SECURITY

Personal Safety System* for driver and front passenger — Includes dual-stage front airbags*, safety belt pretensioners, safety belt energy-management retractors, safety belt usage sensors, driver-seat position sensor, crash severity sensor, restraint control module and Front-Passenger Sensing System
 Anti-theft perimeter alarm
 Front-seat side airbags*
 Side-curtain airbags*
 Side-intrusion door beams
 Battery saver
 Belt-Minder® safety belt reminder
 Child-safety rear door locks
 Emergency trunk release
 Illuminated entry
 Lower anchors and tether anchors for child-safety seats (LATCH)
 Remote keyless-entry system (key-integrated)
 Safety belts — 3-point for all seating positions
 SecuriLock® passive anti-theft engine immobilizer system
 Tire Pressure Monitoring System

SEATING

5-passenger seating
 6-way power driver seat with manual lumbar
 60/40 split-folding spring-assisted rear seat
 Front bucket seats
 Height-adjustable driver seat
 Map pockets — Driver and front-passenger seatbacks

INTERIOR

Accessory delay for power features
 Air conditioning
 Audio input jack — Centre console
 Beverage holders — 6
 In-dash storage compartment
 Floor mats — Front and rear carpeted
 Full centre console with armrest and two-tiered storage
 Grocery bag hook — Trunk-mounted
 Message centre with trip computer
 Overhead console with dome and map lights
 Power door locks
 Power points — 2
 Power trunk release
 Power windows with one-touch-down driver-side feature
 Rear-seat fold-down centre armrest with beverage holders
 SIRIUS Satellite Radio
 Steering wheel-mounted cruise and audio controls
 Tilt/telescoping steering column
 Visors with illuminated mirrors

EXTERIOR

Fog lamps
 Grille — Chrome
 Headlamps — Quad-beam halogen
 Power heated sideview mirrors
 Rear-window defroster
 Solar-tinted glass
 Windshield wipers — Speed-sensitive

*Always wear your safety belt and secure children in the rear seat.

FEATURES & OPTIONS

	SE with I-4	SE with V6	SEL with I-4	SEL with V6
MECHANICAL				
●	—	—	—	—
—	●	—	—	—
●	—	●	—	—
○	—	○	—	—
—	●	—	●	—
●	—	—	—	—
○	●	—	—	—
—	—	●	●	—
●	●	—	—	—
—	●	—	—	—
—	—	●	●	—
○	○	○	○	○
○	●	○	●	—
—	●	—	●	—
SEATING				
●	●	●	●	●
—	—	○	○	○
INTERIOR				
●	●	—	—	—
○	○	○	○	○
○	○	●	●	—
○	○	○	○	○
○	○	○	○	○
●	●	—	—	—
—	—	●	●	—
●	●	—	—	—
—	—	●	●	—
●	●	—	—	—
—	—	●	●	—
○	○	○	○	○
○	○	○	○	○
○	○	○	○	○
—	—	●	●	—
EXTERIOR				
●	●	—	—	—
—	—	●	●	—
—	—	●	●	—
—	—	●	●	—
○	○	○	○	○
○	○	○	○	○
○	○	○	○	○
—	—	●	●	—
PACKAGE				
○	○	○	○	○
—	—	○	○	○

● Standard ○ Optional — Not Available

©2007 SIRIUS Satellite Radio Inc. "SIRIUS," the SIRIUS dog logo, channel names and logos are trademarks of SIRIUS Satellite Radio Inc. Audiophile is a registered trademark of Audiophile, Inc.

DIMENSIONS AND RATINGS

EXTERIOR	MM (IN.)
Overall length	4831 (190.2)
Wheelbase	2728 (107.4)
Vehicle width (incl. mirrors)	1834 (72.2)
Height	1453 (57.2)
INTERIOR	
Front	
Head room	983 (38.7)
Shoulder room	1458 (57.4)
Hip room	1372 (54.0)
Leg room (max.)	1074 (42.3)
Rear	
Head room	960 (37.8)
Shoulder room	1435 (56.5)
Hip room	1354 (53.3)
Leg room (min.)	940 (37.0)
Capacities	
Passenger volume litres (cu. ft.)	2835 (100.1)
Luggage volume litres (cu. ft.)	447 (15.8)
Total interior volume litres (cu. ft.)	3282 (115.9)
Seating capacity	5
Trunk liftover height mm (in.)	719 (28.3)
Fuel capacity litres	66

WHEELS

- A** 16" Machined-Aluminum
Standard on SE V6, optional on SE I-4
- B** 18" Aluminum with Painted Pockets
Standard with Sport Appearance Package
- C** 16" Steel with Deluxe Cover
Standard on SE I-4
- D** 17" Machined-Aluminum
Standard on SEL



ENGINE

POWER RATINGS	2.3L DURATEC 23 MANUAL	2.3L DURATEC 23 AUTOMATIC	3.0L DURATEC 30 AUTOMATIC
Horsepower (hp @ rpm)	160 @ 6250	160 @ 6250	221 @ 6250
Torque (lb.-ft. @ rpm)	156 @ 4250	156 @ 4250	205 @ 4800

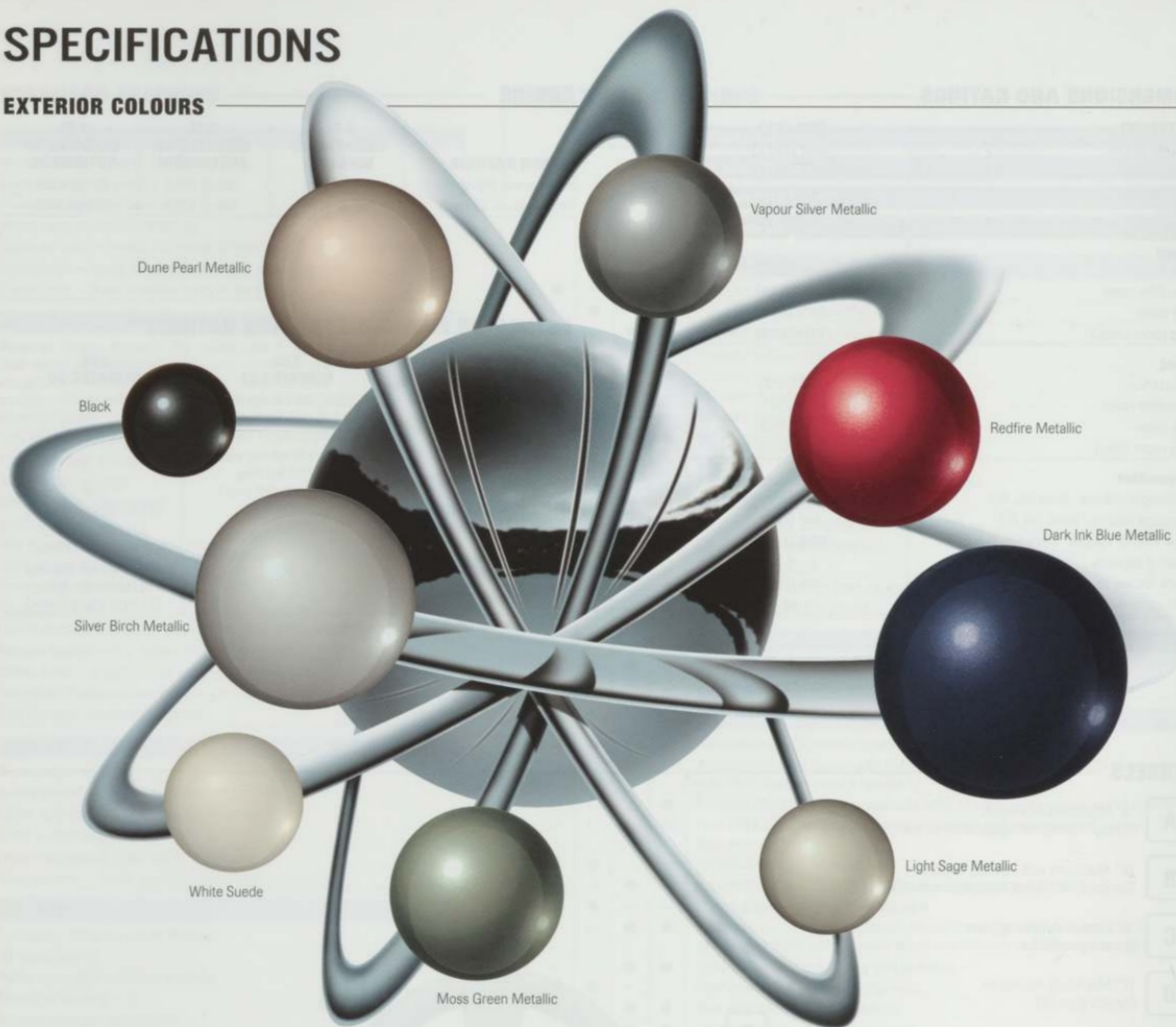
ESTIMATED FUEL CONSUMPTION RATINGS**

TRANSMISSION	2.3L DURATEC 23	3.0L DURATEC 30
5-speed manual	10.1L/100 km city and 6.9L/100 km hwy. (28 mpg city/41 hwy.)	n/a
5-speed automatic	10.2L/100 km city and 7.0L/100 km hwy. (28 mpg city/40 hwy.)	n/a
6-speed automatic (FWD)	n/a	11.7L/100 km city and 7.7L/100 km hwy. (24 mpg city/37 hwy.)
6-speed automatic (AWD)	n/a	12.5L/100 km city and 8.1L/100 km hwy. (23 mpg city/35 hwy.)

**Based on Transport Canada approved test methods.

SPECIFICATIONS

EXTERIOR COLOURS



INTERIOR COLOURS



CAMEL	
MEDIUM LIGHT STONE	
CHARCOAL BLACK	
ALL MODELS	
●	Dune Pearl Metallic
●	Vapour Silver Metallic
●	Redfire Metallic
●	Dark Ink Blue Metallic
●	Light Sage Metallic
●	Moss Green Metallic
●	White Suede
●	Silver Birch Metallic
●	Black

Ford uses clearcoat paint for beauty and protection. Colours shown are representative only. Not all colours are available on all models. See your Ford of Canada Dealer for actual paint/trim options.

THE 2008 FORD FUSION

- Bright chrome grille: Ford styling signature
- Dynamic 4-wheel independent suspension
- Efficient 160-hp I-4 engine with 5-speed manual; 5-speed automatic, available
 - 221-hp 3.0L V6 powerplant with 6-speed automatic
- One-Touch Intelligent Start for automatic transmissions
 - Intelligent All-Wheel Drive (AWD), available
- Split-fold rear seatback, fold-flat front-passenger seat and in-dash pop-open storage
- SIRIUS Satellite Radio includes 6-month prepaid subscription and 6-speaker sound system
- Sport Appearance Package with uniquely tuned suspension and unique accents, optional
 - Ambient Lighting Package with 7 changeable colours, optional
 - Voice-activated, DVD-based Navigation System, optional
- Exclusive Ford SYNC™ voice-activated communications system (late availability)
- All safety features standard, including 6 airbags, ABS and Personal Safety System®



For more information on Ford of Canada and Ford products, please visit our website:



Our commitment to you... Peace-of-Mind Protection

- Basic Coverage: 3 years/60,000 km
- Powertrain Warranty: 5 years/100,000 km
- Corrosion Warranty: 5 years/unlimited distance
- Roadside Assistance: 5 years/100,000 km*

Certain conditions apply. For more information on these warranties and coverages, ask your local Ford of Canada Dealer or visit ford.ca. *No additional cost.

For prompt, courteous answers to your questions:

Ford Customer Relationship Centre
1-800-565-3673
Ford Credit Customer Service Centre
1-877-636-7346

Competitive comparisons are based on 2007 competitive models, publicly available information and Ford data at the time of printing. Some features discussed may be optional. Vehicles shown may contain optional equipment. Features shown may be offered only in combination with other options or subject to additional ordering requirements or limitations. Dimensions shown may vary due to optional features and/or production variability. Following publication of this catalogue, certain changes in standard equipment, options and the like, or product delays may have occurred which would not be included in these pages. Your Ford of Canada Dealer is your best source for up-to-date information. Ford Motor Company of Canada, Limited, reserves the right to change product specifications at any time without incurring obligations. Colours may not be exactly as illustrated due to restrictions of the printing process. Please see your sales consultant for specific colour and model availability.

The Right Ford Car for You

For a great value, you needn't look any further than Ford. Fusion is the essence of stand-out midsize quality, taking all that finesse to an available All-Wheel-Drive degree. Focus is more fun-loving than ever: It's new inside and out, and now comes as a coupe or sedan. The legendary Mustang is not only the best-selling sports car in Canada, it's also the top-selling convertible. Taurus is the perfect family car – loaded with the latest in full-size essentials.

Visit ford.ca to find your perfect match.

Focus



Fusion



Mustang



Taurus



For more information on
Ford of Canada products and services,
please visit our website:

