

Specifications

ENGINE:

A 20° tilt to the left and a grouping of spark plugs, oil level gauge, distributor, oil filter and fuel pump on the right make servicing and checking easy. Five bearings support the crankshaft and a high camshaft system makes it possible to use shorter push rods for faultless valve follow at high speeds. The aluminum alloy cylinder head gives fast cooling and high strength.

Displacement: 4 cylinders in line, O.H.V. 65.8 cu. in. **Bore & stroke:** 2.95x2.40 in. **Compression ratio:** 9.0 **Maximum torque:** 61.5 ft. lb./3,800 RPM **Carburetor:** Down draft 2-barrel **Cooling:** Water cooled by centrifugal pump. Pressurized radiator. Water capacity, 5 quarts. **Crankcase:** Capacity, 2.9 qts.

CLUTCH:

Single dry plate with diaphragm spring and mechanical actuation; facing diameter: 7.1 in.; clutch facing area, 40.9 sq. in.

ELECTRICAL SYSTEM:

12-volt battery; 380-watt alternator.

TRANSMISSION:

4-speed all synchromesh **Shift Lever Position:** Center on floor **Gear Ratio:** 1st, 3.684 — 2nd, 2.090 — 3rd, 1.383 — 4th, 1.000 — Reverse, 4.316 **Rear Axle Gear Ratio:** 4.222.

SUSPENSION:

Front: Coil springs, telescopic strut type shock absorbers, lower wishbones & transverse leaf springs.

Rear: Semi-elliptic leaf springs and telescopic shock absorbers.

BRAKES:

Hydraulic, 4 wheels; Drum diameter: 7.9 in.

DIMENSIONS:

Wheelbase, 90.0 in. — Tread, Front, 49.0 — Rear 48.0 — Overall Length 152.8 — Overall Width 58.5 — Overall Height 53.0 — Ground Clearance 6.7. **TIRE SIZE:** 6.00 12, 4 P.R.

PERFORMANCE: Maximum Speed 90 mph — Maximum Cruising Speed 75 mph — Acceleration (ss $\frac{1}{4}$ mile) 20.3 sec.




Optional equipment

AM RADIO: Features push-button operation and hi-fi quality sound.

STEREO TAPE PLAYER: Surrounds you with hi-fidelity sound. Plays eight track cartridge.



The Toyota policy of continual improvement in design and manufacture requires specifications, equipment and price be subject to change without notice.

 TOYOTA, Japan's No. 1 Automobile Manufacturer

Toyota Motor Distributors, Inc., Main Office, 2055 West 190th St., Torrance, Calif. 90501/Eastern Office, 50 Polito Avenue, Lyndhurst, New Jersey 07071
Mid-southern Toyota Distributors, Inc. 1640 North LaSalle St., Chicago Ill. 60614/Southeast Toyota Distributors, Inc. 1501 S. Federal Highway, Pompano Beach, Florida 33062

Printed in Japan No. 7762





Here's America's newest way to go wagoning! The Toyota Corolla 2-door wagon. It combines the goingest 60 horses you'll ever find with sedan comfort for four and toting room for golf bags, picnic baskets, beach umbrellas, luggage or whatever it is you're taking along for the fun of it. For hauling jobs, fold down the rear seat and you've got a good-sized flat deck that puts some pretty big things on the move. And fast. Gets easily up to 75 mph. Will even top 87 when you ask for it. Does it all in the 30 to 35 miles per gallon range, too. Be the first in your crowd to have the goingest, newest thing in wagons!

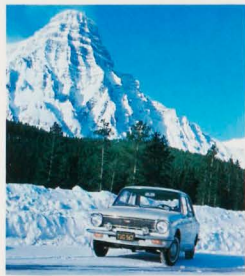
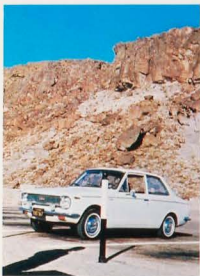
COROLLA 2-door wagon

Take a look at this load of wagon features:

1. Thanks to the compact dimensions, you can squeeze your way through tight places in traffic and zip into short parking spaces.
2. 4 on the floor all synchromesh transmission adds a sporty gait to your wagon traveling.
3. Betting on looks? Toyota Corolla 2-door station wagon is a sure thing.
4. Rear door swings up high to give you easy access to Corolla's wide open flat spaces.
5. Deep foam cushion rear seat gives passengers sedan comfort. Folds down to give you big room for a haul-in.
6. Newly designed, right-to-left operating choke lever, cigarette lighter and ash tray... all part of some pretty fancy fix'ns in our low priced wagon.
7. Does circles around anything under 30 ft.
8. Good looking grille and hood line... a face anyone can be proud of.

*White side wall tires and tinted glass all around are optional at slight cost.





Toyota Corolla is no stranger to this country. In fact, two test Corollas have lived here for more than a year and traveled thousands of miles! Corolla has been exposed to the worst and the best of our driving conditions. It performed like a native. The winter cold of the Northern Rockies, the summer heat of Arizona... the flat long drives of Florida, the hairpin turns of the Great Divide... the leisurely country roads of up-state New York, the hectic freeways of California... all were met and conquered by Toyota Corolla.

Corolla has been up-and-down and in-and-out of every kind of driving condition found in the U.S.A.

So, you can give it any kind of driving job you want, Toyota Corolla will know what to do. And you'll feel at home in Corolla. It's designed to respond to American driving habits. Buttons, dials, push-things and pull things... all are right where you are used to having them. Toyota Corolla is America's newest set of wheels, but when you return to where you've parked yours, you'll feel like you've come back to an old friend.



Specifications

ENGINE:

A 20° tilt to the left and a grouping of spark plugs, oil level gauge, distributor, oil filter and fuel pump on the right make servicing and checking easy. Five bearings support the crankshaft and a high camshaft system makes it possible to use shorter push rods for faultless valve follow at high speeds. The aluminum alloy cylinder head gives fast cooling and high strength.

Displacement: 4-cylinders in line, O.H.V. 65.8 cu. in. **Bore & stroke:** 2.95x2.40 in. **Compression ratio:** 9.0 **Maximum torque:** 61.5 ft. lb./3,800 RPM **Carburetor:** Down draft 2-barrel **Cooling:** Water cooled by centrifugal pump. Pressurized radiator. Water capacity, 5 quarts. **Crankcase:** Capacity, 2.9 qts.

CLUTCH:

Single dry plate with diaphragm spring and mechanical actuation; facing diameter: 7.1 in.; clutch facing area, 40.9 sq. in.

ELECTRICAL SYSTEM:

12 volt battery; 380 watt alternator.

TRANSMISSION:

4-speed all synchromesh **Shift Lever Position:** Center on floor **Gear Ratio:** 1st, 3.684—2nd, 2.050—3rd, 1.383—4th, 1.000—Reverse, 4.316 **Rear Axle Gear Ratio:** 4.222.

SUSPENSION:

Front: Coil springs, telescopic strut type shock absorbers, lower wishbones & transverse leaf springs.

Rear: Semi-elliptic leaf springs and telescopic shock absorbers.

BRAKES:

Hydraulic, 4 wheels; Drum diameter: 7.9 in.

DIMENSIONS:

Wheelbase, 90.0 in. — Tread, Front, 49.0 — Rear 48.0 — Overall Length 152.8 — Overall Width 58.5 — Overall Height 53.0 — Ground Clearance 6.7.

TIRE SIZE: 6.00-12, 4 P.R.

PERFORMANCE: Maximum Speed 90 mph — Maximum Cruising Speed 75 mph — Acceleration (55¼ mile) 20.3 sec.



Optional equipment

AM RADIO: Features push-button operation and hi-fi quality sound.

STEREO TAPE PLAYER: Surrounds you with hi-fidelity sound. Plays eight track cartridge.



The Toyota policy of continual improvement in design and manufacture requires specifications, equipment and price be subject to change without notice.



TOYOTA, Japan's No. 1 Automobile Manufacturer

Toyota Motor Distributors, Inc., Main Office, 2055 West 190th St., Torrance, Calif. 90501; Eastern Office, 50 Polito Avenue, Lyndhurst, New Jersey 07071
Mid-southern Toyota Distributors, Inc., 1640 North LaSalle St., Chicago Ill. 60614; Southeast Toyota Distributors, Inc., 1501 S. Federal Highway, Pompano Beach, Florida 33062

Printed in Japan No. 77603

TOYOTA COROLLA

Sprinter





Get on your mark... get set... go!
 On the newest set of fastback wheels around.
 You'll be off and running with a 60 horsepower
 engine... lets you step up to 90 mph... stays
 in stride easily at 75 mph. Gives you
 marathon mileage, too. Each gallon puts 30
 to 35 miles under you. And it pads along
 about as quiet as a cat out hunting. Toyota
 Corolla Sprinter gives you a good run for the
 money... anyway you want to look at it.

*Toyota Corolla Sprinter has the style... performance
 ... features... and low, low price to place it
 lengths ahead of any car in its class!*

1. Glare-resistant, impact absorbing dash; padded door armrests and deep foam cushioned, fully-reclining contoured bucket seats put you up front in safety, convenience and comfort.
2. 4-on-the-floor, all synchromesh transmission adds a sporty gait to your sprinting.
3. 2-speed electric windshield wipers and washers... squirt, squirt; wipe, wipe and it all looks good and clear ahead.
4. A trunk that's big enough to give you the inside track on take-alongs.
5. You don't have to send your eyes wandering to find out what's going on. Two big deeply recessed dials look you square in the eye... tell you all you want to know.
6. Aerodynamic design and styling give you a fast look... cut wind-noise hang-up.
7. No hassle with pick-up... Sprinter matches cars with even bigger engines.
8. Take the gang along too. Sprinter's back seat easily handles two... even three if they're close friends.
9. Tilt! 4-cylinder engine is turned 20° to the left. Makes checking and servicing a snap! Spark plugs, oil level gauge, distributor, oil filter and fuel pump are conveniently grouped for easy access.

**White side wall tires and tinted glass all around are optional at slight extra cost.*

