

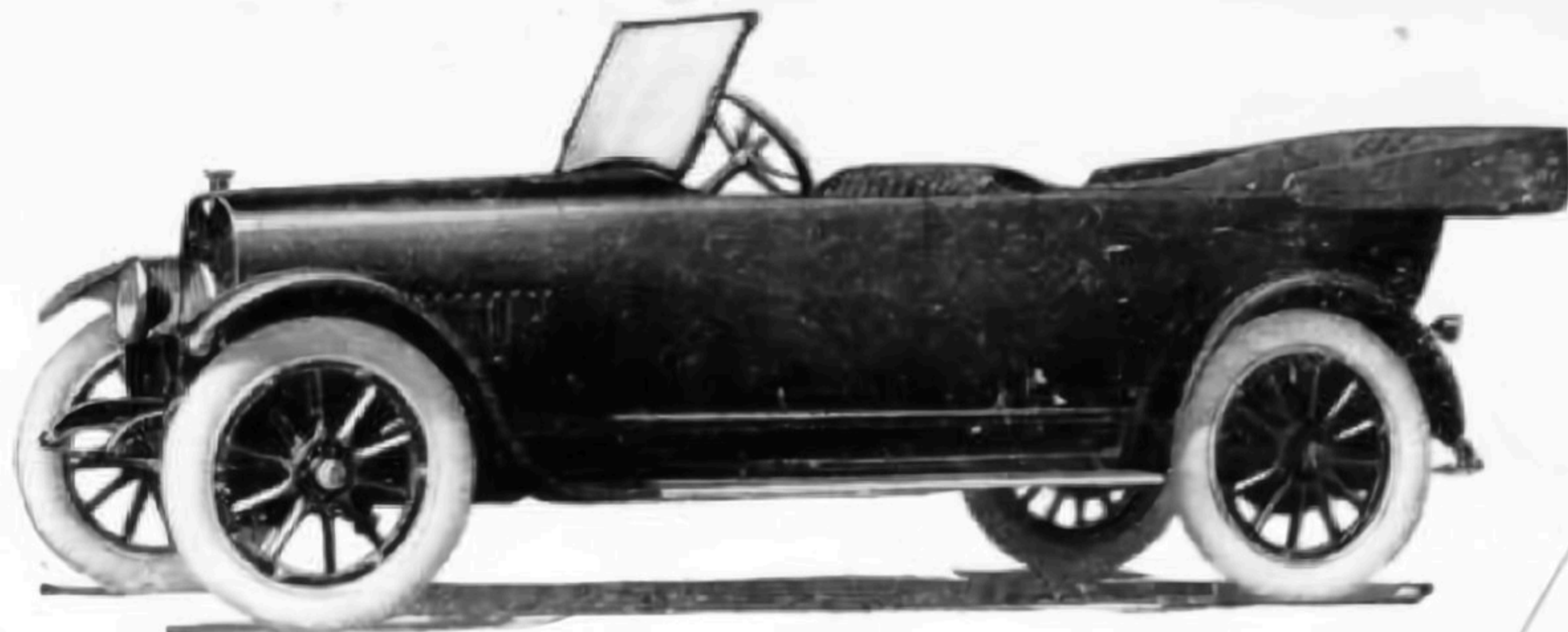
The logo is a large, downward-pointing triangle with a dark blue background. The triangle is outlined with a decorative, ornate border featuring floral and scrollwork patterns. Inside the triangle, the words "HUDSON", "SUPER", and "SIX" are stacked vertically in a bold, serif font. Below the main text, the words "TRADE", "NAME", and "REG." are stacked in a smaller, sans-serif font.

HUDSON
SUPER
SIX

TRADE
NAME
REG.

The
**HUDSON
SUPER-SIX**

is something absolutely new. It
is manufactured under United
States Patents granted
December 28, 1915



The Hudson Super-Six

Seven-passenger

Phaeton

Price \$1375

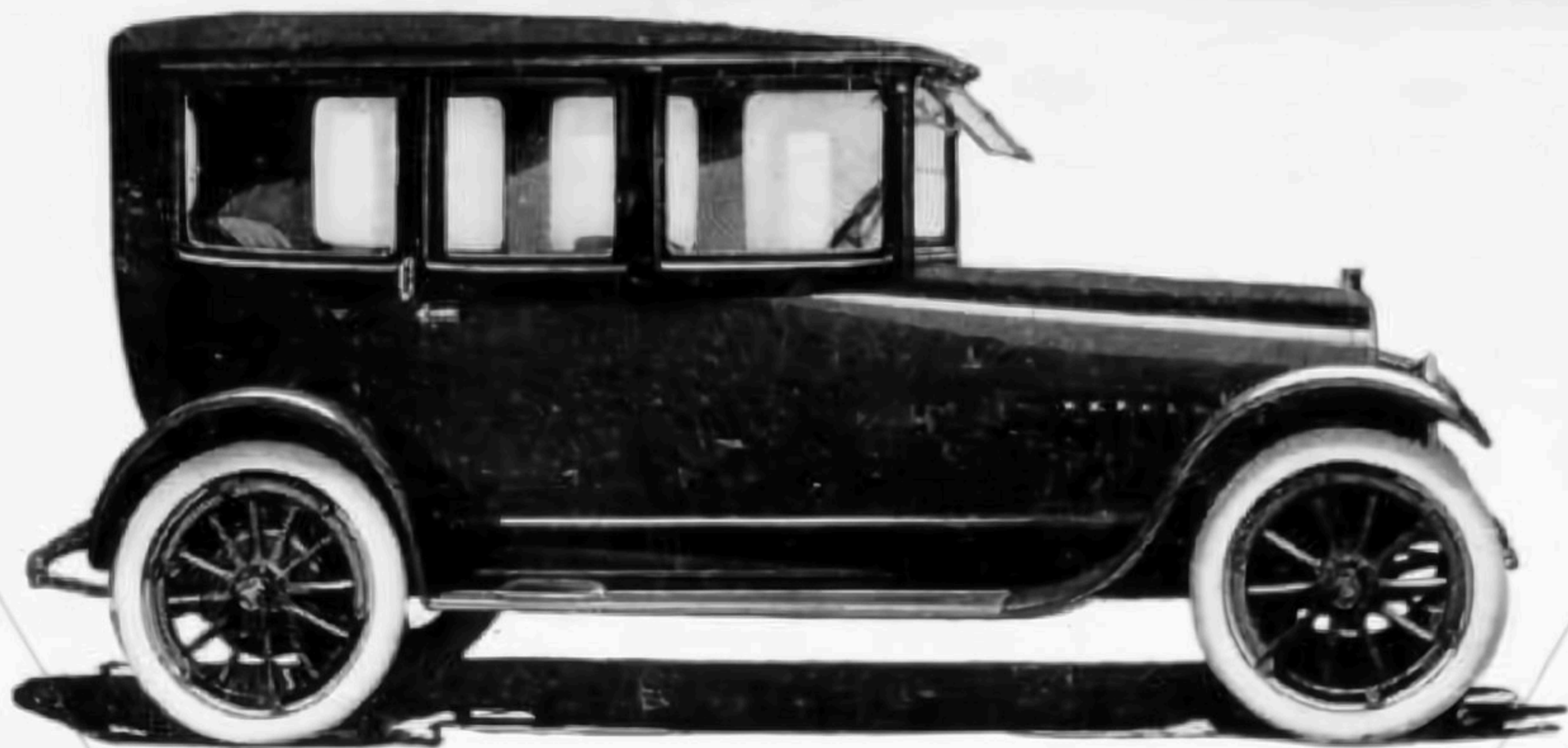
f. o. b.

Detroit

Seven-passenger
Phaeton showing
the one-man top and
auxiliary seats raised.
Remember, this is a long
car — 125½-inch wheelbase.
Much longer than the average,
hence it rides more luxuriously
and steadily

Price, \$1375
f.o.b. Detroit





The Hudson Super-Six

Seven - passenger

Touring Sedan

Sides Closed

Price, \$1900

f. o. b.

Detroit

Seven passenger

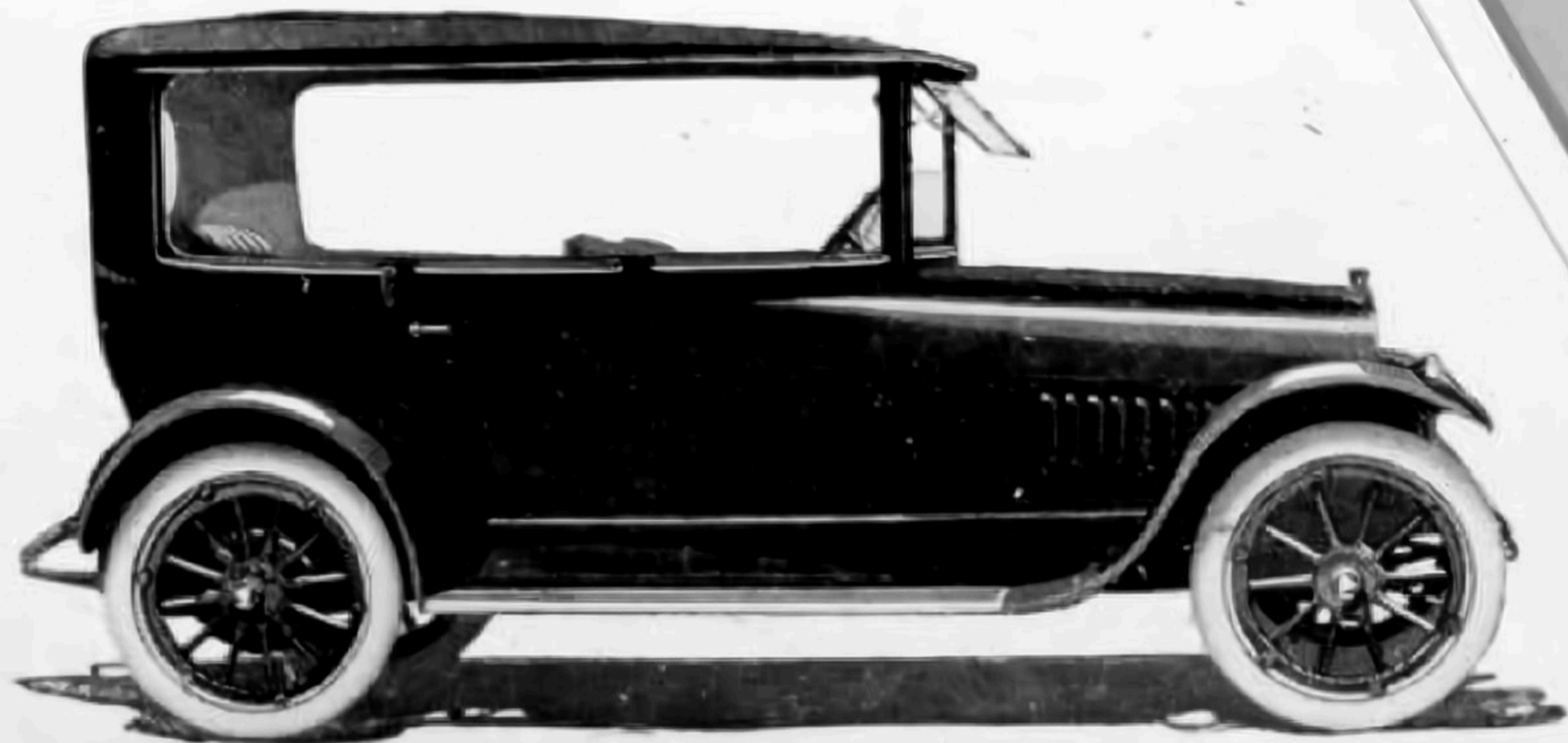
Touring Sedan

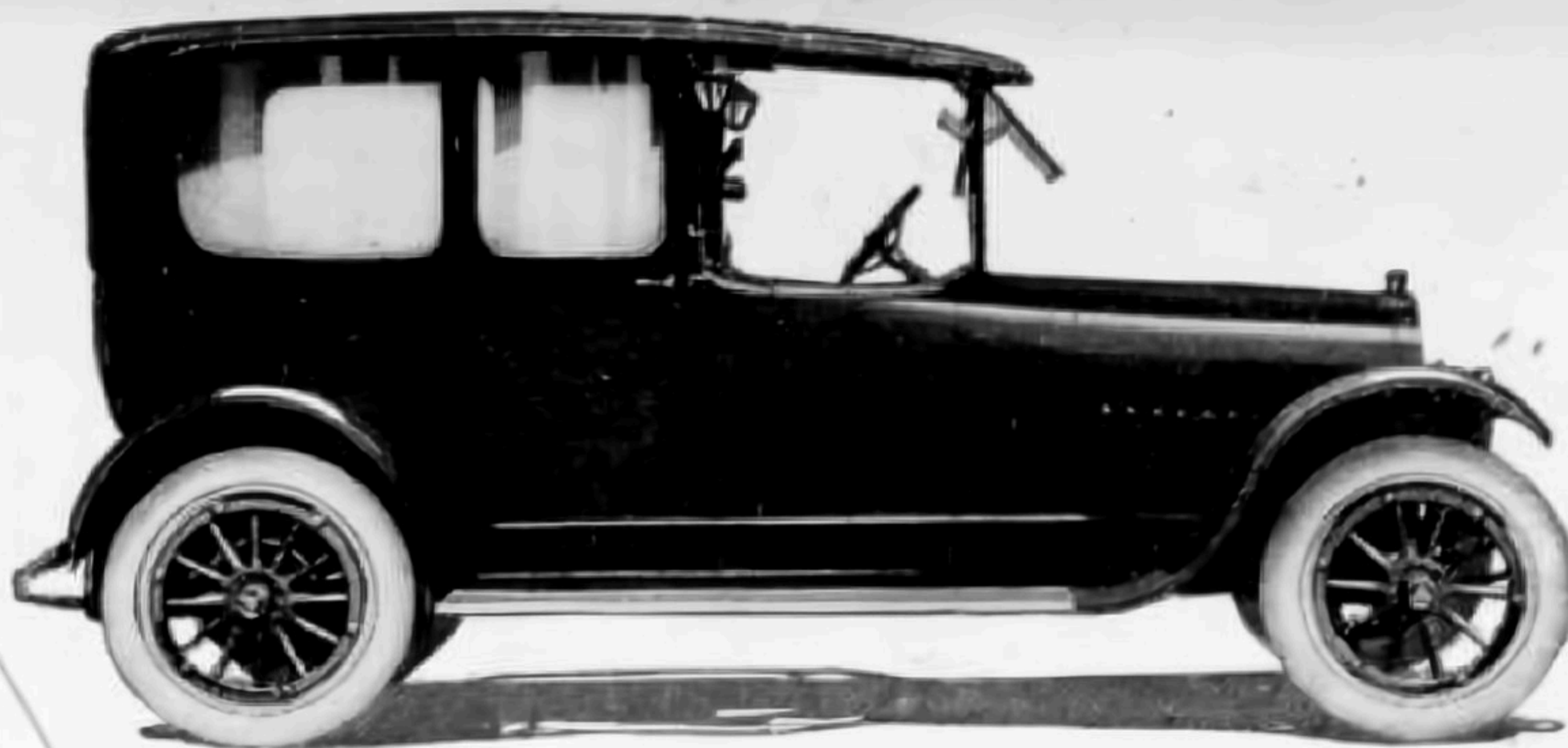
showing sash and pillars
down

Price, \$1900

f. o. b.

Detroit





The Hudson Super-Six Limousine

Seven-passenger

We challenge the motor car
manufacturers of the world
to show the equal of
this car at the

Price, \$2500

f. o. b.
Detroit

The
Hudson
Super-Six
Town Car

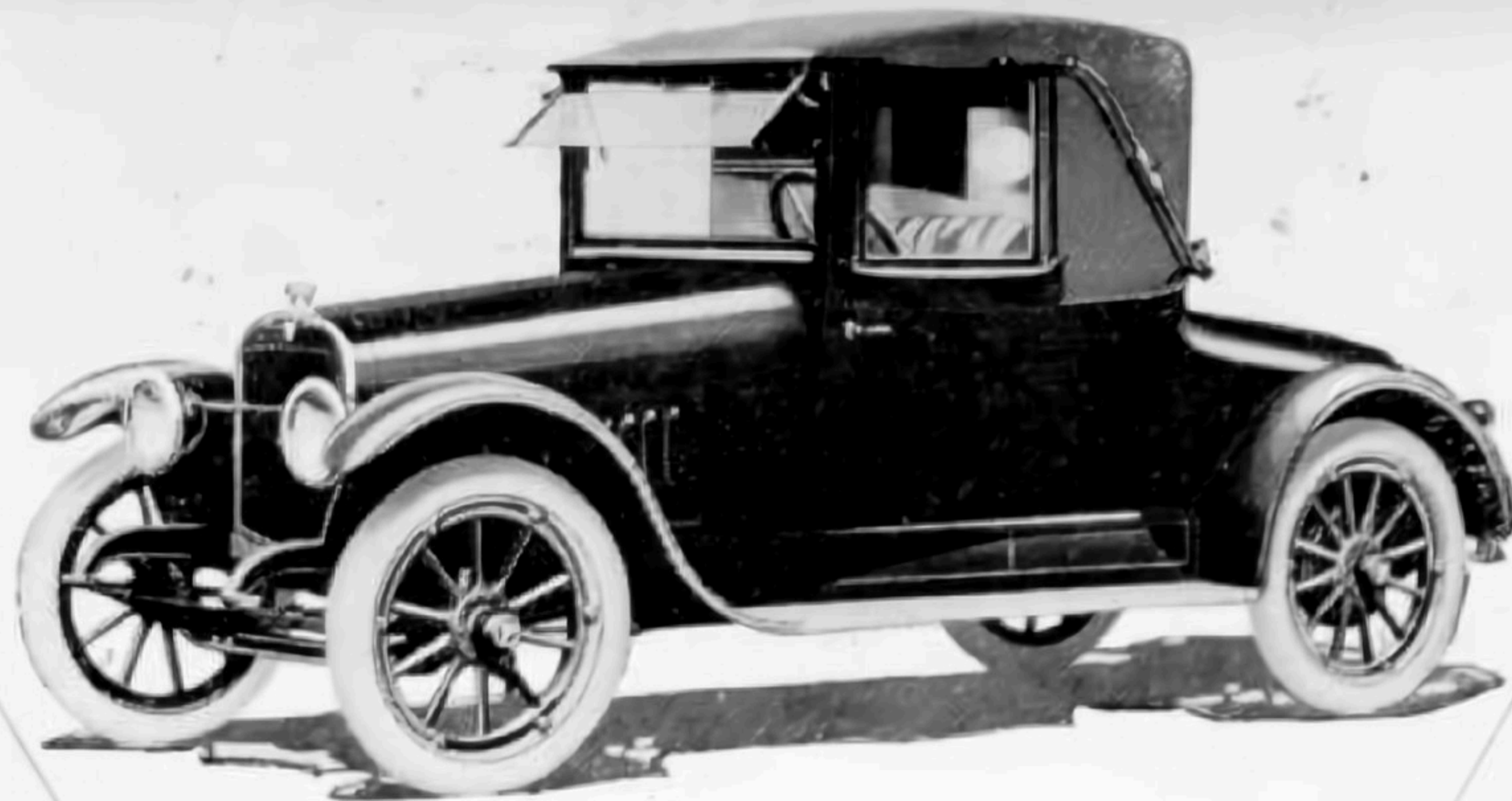
Seven-passenger

This car is built in limited quantities. Two or three of the big cities of the United States begged for the entire output of the Hudson factory on this car

Price \$2500

f. o. b.
Detroit





**The Hudson Super-Six
Cabriolet**

Three-passenger

This type of car popularized
by the Hudson. A car that
is in universal demand
for all seasons' use

Price, \$1675

f. o. b.
Detroit

The
Hudson
Super-Six
Standard
Roadster

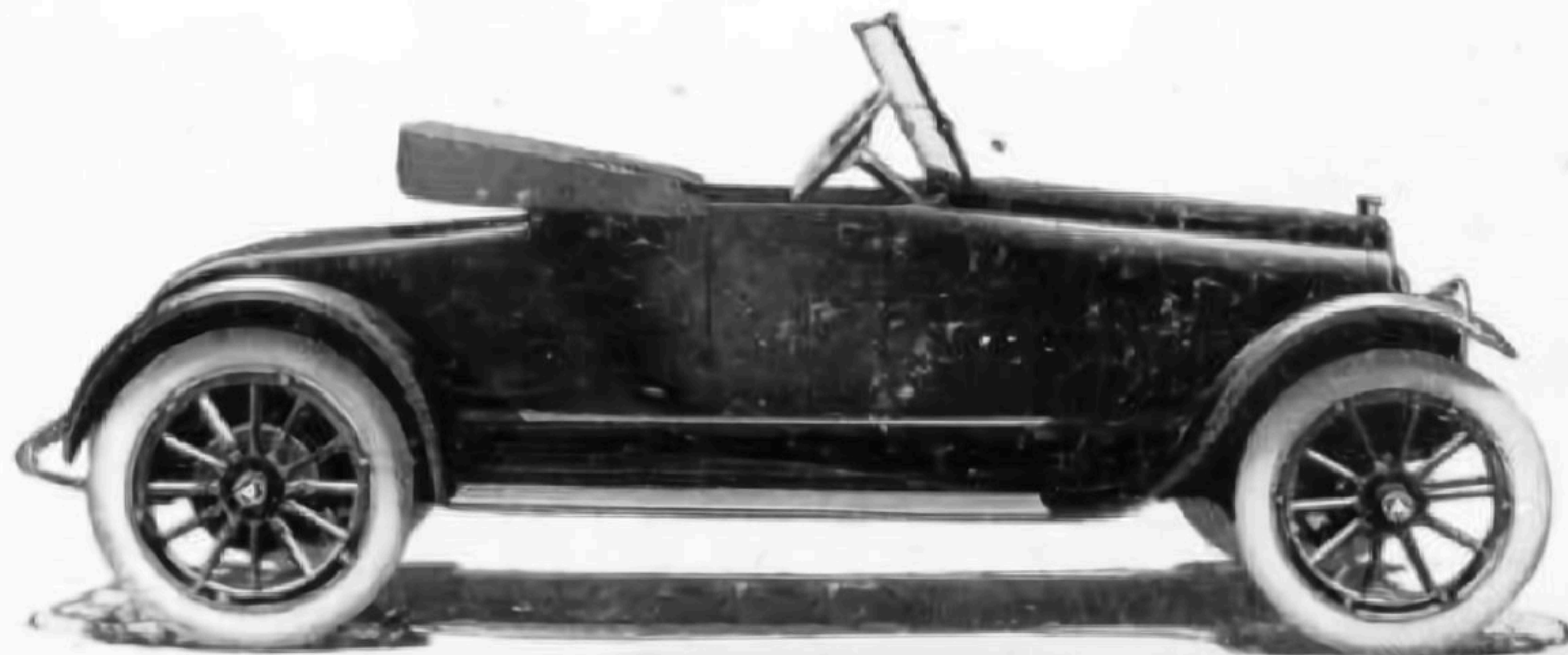
Three-passenger

This is the snappiest, speediest,
most popular roadster on
the market

Price, \$1375

f. o. b.

Detroit



Prices of the Hudson Super-Six

*All prices f. o. b. Detroit, and subject
to change without notice*

Phaeton, Seven-passenger . . .	\$1375
Standard Roadster, 3-passenger	1375
Cabriolet, 3-passenger	1675
Touring Sedan, 7-passenger . .	1900
Limousine, 7-passenger	2500
Town Car, 7-passenger	2500

*Ask at Hudson Booth for Hudson
catalog, or write Hudson Motor
Car Company, Detroit, Mich.,
and it will be mailed to your
home address, with name
of nearest Hudson
representative*



The logo is a large, inverted triangle with a dark blue background. The text is embossed in a light blue or silver color. The words "HUDSON", "SUPER", and "SIX" are stacked vertically in a bold, serif font. The text is enclosed within a decorative border consisting of multiple parallel lines and an ornate, leaf-like pattern along the edges.

HUDSON
SUPER
SIX

TRADE
NAME
REG.