

NISSAN SENTRA



**NISSAN SENTRA:
CALCULATING MAJOR
VALUE.**

Today, the Bottom Line is all-important. To keep it healthy your budget must be delicately balanced, and there's an economical* Nissan Sentra to help tip the scales in your favor.

They range from the thrifty Nissan Sentra Standard 2-Door to the sporty XE Coupe. Each is an economy car, of course, but each is also designed and equipped for the kind of comfort, convenience and driving pleasure you demand.

Every Nissan Sentra (except the Deluxe MPG Diesel 2-Door Sedan) has the snappy power of a 1.6-liter, overhead cam engine that drives

the front wheels through a 5-speed overdrive transaxle. Fully independent suspension and rack-and-pinion steering give you precise handling and standard features such as reclining front seat backs and flow-through ventilation assure your comfort.

The Nissan Sentra is easy to figure. Just add up its numbers—low cost and fuel economy—and multiply by its attributes—utility, performance, comfort, style and quality. The bottom line reads major value.

*See E.P.A. estimates, page 19.



Nissan Sentra Deluxe 2-Door Sedan,
shown with optional wheel trim rings.

FOUR ROUTES TO MAJOR VALUE.

Want five-passenger room, front wheel drive, fully independent suspension and the crisp styling of a European sports sedan in a car that's affordable and efficient*? Then choose any one of four Nissan Sentra 2-Door Sedans.

The Standard model is your path to low cost, but not at the expense of features such as 5-speed overdrive transaxle, power front disc brakes and electric rear-window defroster.

The Deluxe model will take you there in the comfort of fully reclining bucket seats, surrounded by tinted glass, rich carpeting—

and more. It's available with gas or diesel power.

The XE takes the high road accompanied by the sound of standard AM/FM multiplex stereo radio and the convenience of such items as a vanity mirror for the passenger, power steering with tilt steering column, a walk-in device to ease rear seat entry—and more.

No matter which Nissan Sentra 2-Door Sedan you choose, you will arrive at major value. And you'll get there in style.

*See E.P.A. estimates, page 19.



The standard dual rear view mirrors on Nissan Sentra XE are remotely controlled from the inside.



Crisp and tasteful European styling distinguishes this efficient new Nissan Sentra Standard 2-Door Sedan.



Nissan Sentra Deluxe 2-Door Sedan comes with features like steel-belted radials and body side moldings.



Here's the perfect choice for major economy: The thrifty Nissan Sentra Deluxe MPG Diesel 2-Door Sedan.



Nissan Sentra XE 2-Door Sedan, shown with optional wheel trim rings.

MAJOR VALUE WITH 4-DOOR SPACE.

There's no substitute for a 4-Door Sedan for space, comfort and convenience. And it's a major achievement to build a 4-Door Sedan that's also efficient* and economical. Nissan has done it in both the Sentra Deluxe 4-Door and Sentra XE 4-Door.

Each car offers genuine 5-passenger room, a spacious locking trunk, the elegantly formal look of a European touring sedan and the mileage of an economy car.

That's major value, but there's more. A car that makes sense doesn't have to be dull. The Sentra 4-Door Sedans are drivers' cars that put pleasure into motoring with the performance of an overhead cam 1.6-liter engine, the flexibility of a 5-speed transaxle, the handling of fully independent suspension and the braking of power front discs.

Nissan Deluxe or XE 4-Door Sedan: room with zoom.

*See E.P.A. estimates, page 19.



AM/FM stereo with five station-selector buttons comes as standard equipment on all Nissan Sentra XE models.



Stalk-mounted XE wiper and washer controls include handy variable intermittent position for light drizzles.



Nissan Sentra XE 4-Door Sedan, shown with optional wheel trim rings.



Nissan Sentra Deluxe 4-Door Sedan, shown with optional wheel trim rings.

INSIDE NISSAN SENTRA: MAJOR COMFORT.

Sit down and look around, all around. In a Nissan Sentra there's a full 360-degree view of the surroundings made possible by large windows and a low-beltline design that's as efficient as it is stylish.

Experience the reclining seat. It's carefully padded for low fatigue and high comfort. And there's equal ease for the rear seat passengers, all three of them.

Glance at the instruments. They're large, clear and designed to be read in an instant, without distracting you from the road ahead.

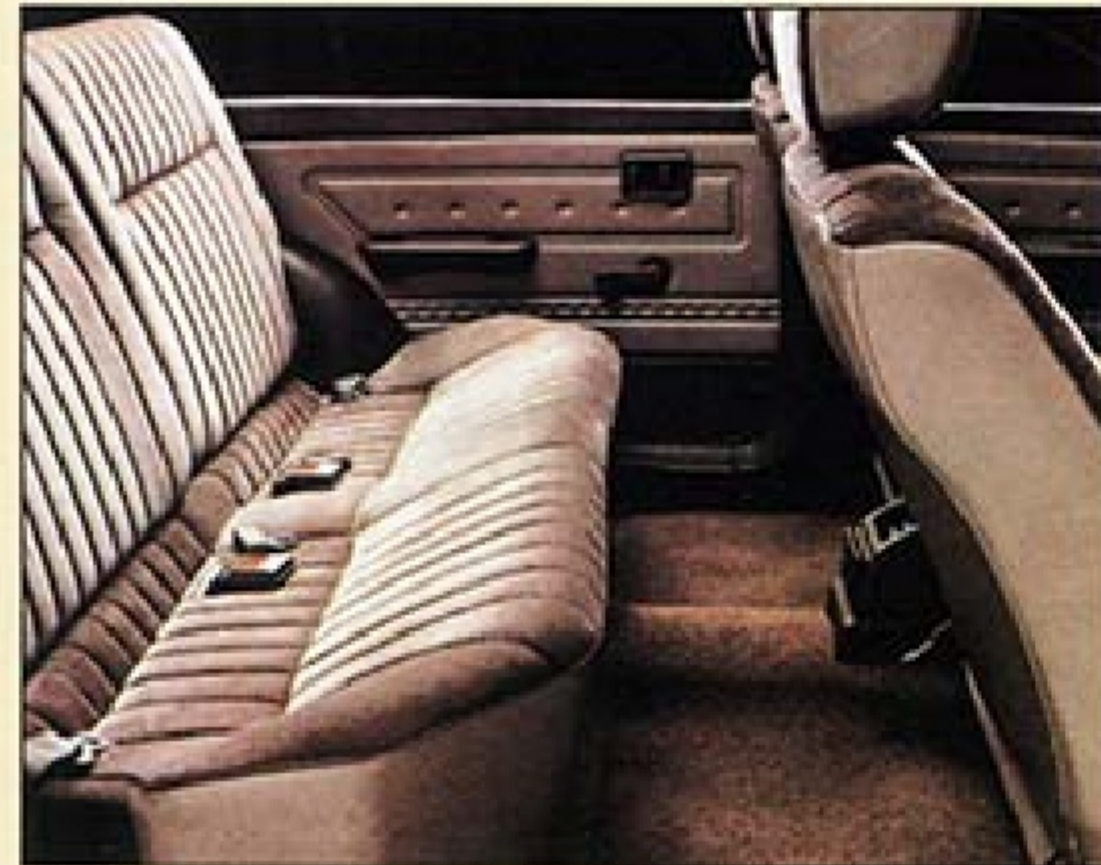
Reach for the controls, each right at hand and easy to use.

Now check out the convenience items on Deluxe and XE models: remote-control fuel-filler door and hatch release; child-safety rear door locks on 4-Door Sedans and Wagons; side-window defoggers; the walk-in device in Deluxe and XE 2-Door Sentras that releases the seat-back and slides the seat fully forward for easy access to the rear... and more, all designed to make driving more pleasant.

Inside Nissan Sentra, major accommodations.



The optional air conditioning on Deluxe and XE models is fully integrated and has a gas-saving economy mode.



There's plenty of room for rear seat passengers to stretch out and relax in every Nissan Sentra 4-Door Sedan.



Automatic transmission has lock-up torque converter. XE Wagon's remote right rear window opener.



Nissan Sentra XE's luxurious interior.

WHAT YOU NEED FOR MAJOR CONTROL.

The Nissan Sentra XE is a genuine economy car, but that doesn't mean it's Spartan, especially inside. Just look at its instrument panel. It has the rich look that comes from flawless execution and the deceptively simple efficiency that results from meticulous engineering and design.

The instruments are all large, clear and easy to read. There are gauges for coolant temperature and fuel level plus a fuel-level warning light. There's even an electronic tachometer and a quartz clock.

Controls such as the windshield wipers and washers, headlights and flash-to-pass function are incorporated in stalks within a finger's reach of the steering wheel.

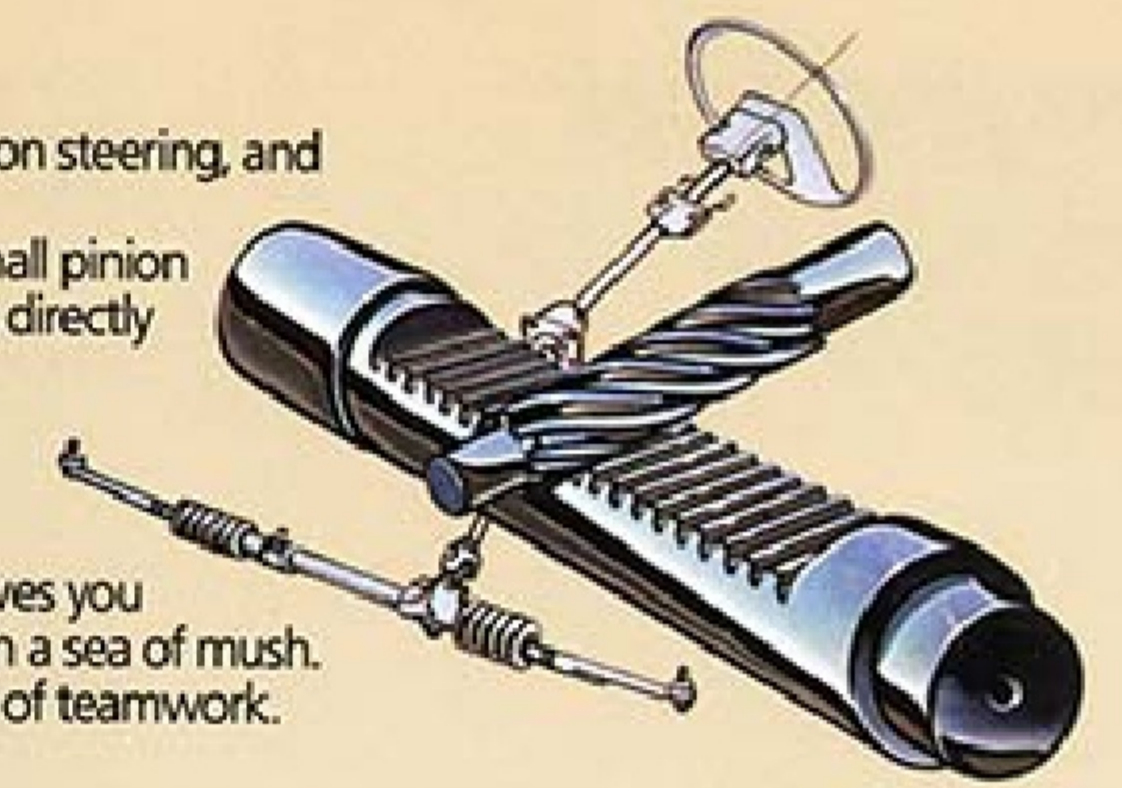
It all looks right, and is right, because it was designed with a major emphasis on making the driver's job easier.

RACK-AND-PINION STEERING

Every Nissan Sentra comes with rack-and-pinion steering, and that's good for some important reasons.

For one, the steering is light and precise. A small pinion gear at the end of the steering column operates directly on a "rack" of gear teeth that connects to the steering arms. Turn the wheel one notch of the pinion and the rack moves exactly one notch. No more, no less. It's ideal for a car like this.

For another thing, the system is direct, so it gives you superb road feel. Your sense of control isn't lost in a sea of mush. Lightness with control. That's a very desirable bit of teamwork.



Every XE comes with this electronic tachometer.



Quartz clock is standard on Sentra Deluxe and XE.



The Nissan Sentra XE instrument panel, shown with optional air conditioning.

NISSAN SENTRA WAGONS FOR MAJOR CAPACITY.

You won't have to sacrifice your family's budget to put them into a vehicle that's got the space you need. There's a Nissan Deluxe or XE Wagon that will do the job without a major expenditure.

With four doors and spacious seating for five passengers, the Nissan Sentra Wagon is a major people mover. And behind the rear seat (even with the back raised) there is 23.5 cubic feet of space for other loads.

There's major power to haul the freight with a high-mileage* 1.6-liter overhead cam engine, plus a fully independent suspension to do the job smoothly.

But the Nissan Sentra Wagon has more going for it than utility. There's the comfort and convenience of tinted glass all around, fully reclining front bucket seats, rear-window wiper and washer, and thick, rich carpeting throughout, including the cargo area.

That's a major combination of room, comfort and value—the Nissan Sentra Deluxe or XE Wagon.

*See E.P.A. estimates, page 19.



*Nissan Sentra XE Wagon,
shown with optional wheel trim rings.*



*Nissan Sentra Deluxe Wagon, shown with
optional 4-Seasons Roof Rack and wheel trim rings.*

**NISSAN SENTRA XE
HATCHBACK COUPE:
THE FUN OF
MAJOR VALUE.**

Searching for economy and value is serious business, but you can do it while enjoying yourself in the Nissan XE Sentra Hatchback Coupe.

Its sporty Hatchback shape was sculpted in a wind tunnel to cut cleanly through the air. And its fully independent suspension was engineered for quick, responsive handling. To make the job easy, there are power front disc brakes and power rack-and-pinion steering.

The interior is strictly for Grand Touring with rich fabric upholstery over reclining bucket seats,

AM/FM stereo, remote control side mirrors and remote rear side window openers.

And with its 1.6-liter, overhead-cam engine and 5-speed transaxle, the Nissan Sentra XE Hatchback Coupe will get you there in a hurry without wasting time in gas stations*.

Who says being practical has to be boring?

*See E.P.A. estimates, page 19.



Deluxe and XE models come with a standard convex passenger side mirror, remotely controlled from inside.



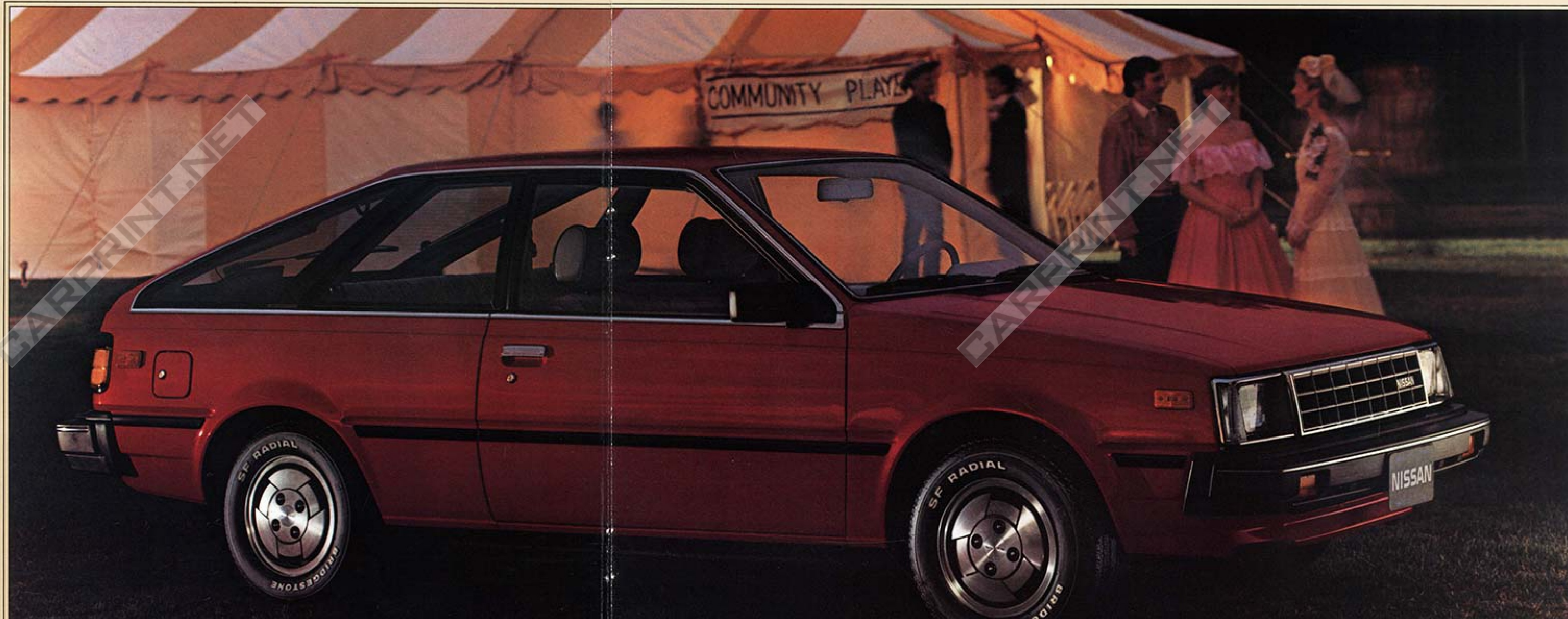
The standard 5-speed overdrive transmission on the Nissan Sentra puts fun and fuel efficiency into driving.



Both rear windows can be opened remotely from the front-seat console in the sporty XE Hatchback Coupe.

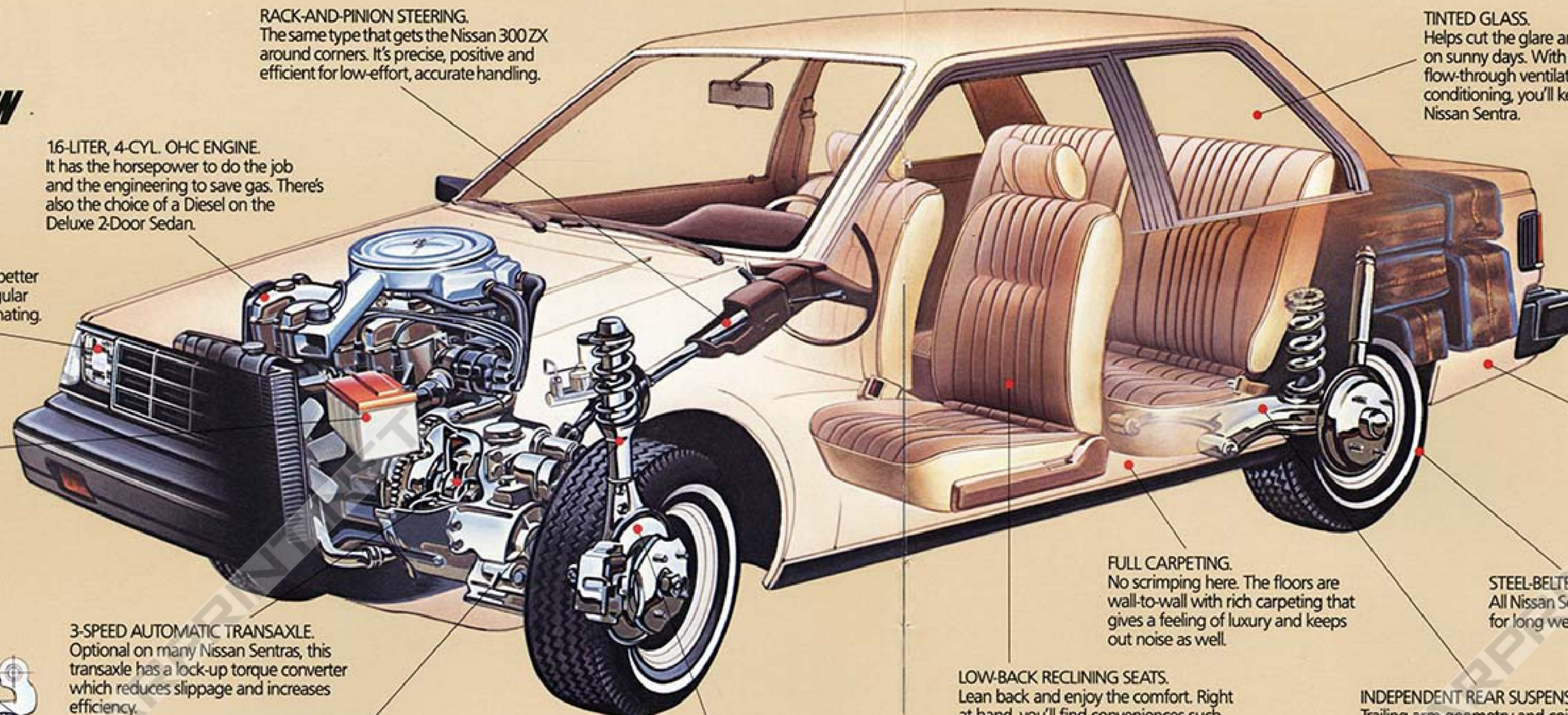


Rectangular halogen headlights are the bright way to drive at night. They're on all Deluxe and XE models.



Nissan Sentra XE 2-Door Hatchback Coupe, shown with optional aluminum wheels.

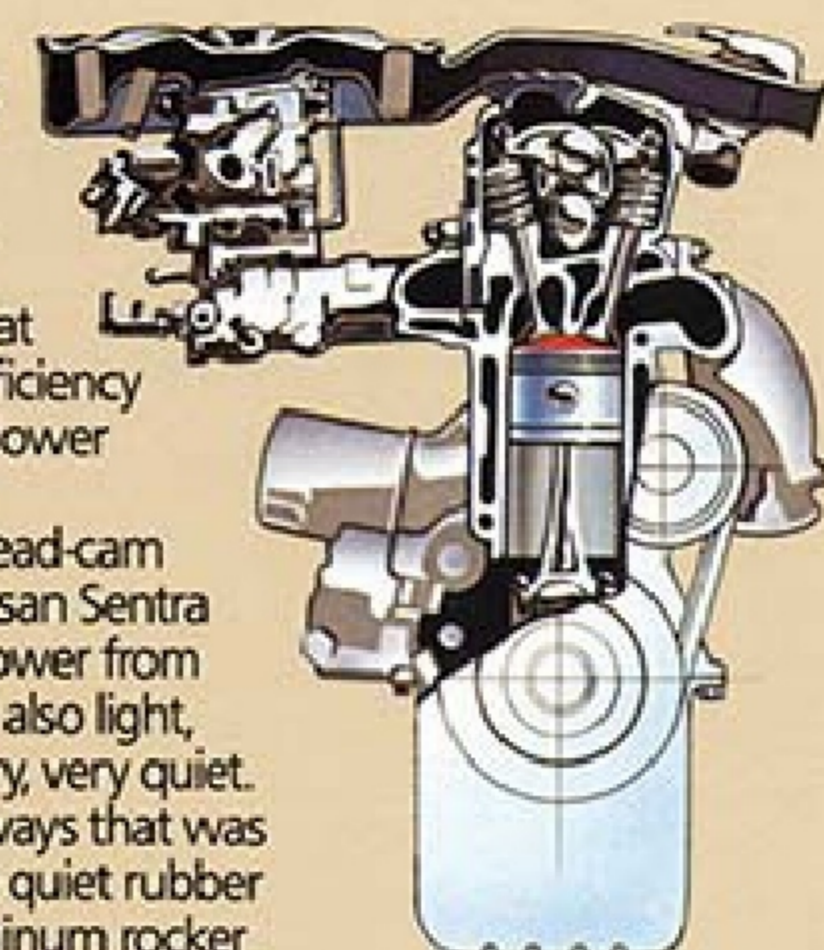
NISSAN SENTRA XE 2-DOOR SEDAN: QUALITY IS MORE THAN SKIN DEEP.



RACK-AND-PINION STEERING.
The same type that gets the Nissan 300 ZX around corners. It's precise, positive and efficient for low-effort, accurate handling.

TINTED GLASS.
Helps cut the glare and beat the heat on sunny days. With either standard flow-through ventilation or optional air conditioning, you'll keep cool in a Nissan Sentra.

NISSAN'S HIGH-POWERED LIGHTWEIGHT ENGINE



Conventional wisdom has it that increased fuel efficiency exacts a price in lower engine power.

But the overhead-cam engine in the Nissan Sentra delivers lots of power from very little gas. It's also light, compact and very, very quiet.

Some of the ways that was achieved include quiet rubber timing belt, aluminum rocker arms and a special intake port design that swirls the fuel into the combustion chamber.

High power, low weight, outstanding mileage* and little noise, all in the same new engine. So much for conventional wisdom.

16-LITER, 4-CYL. OHC ENGINE.
It has the horsepower to do the job and the engineering to save gas. There's also the choice of a Diesel on the Deluxe 2-Door Sedan.

HALOGEN HEADLIGHTS.
They brighten the night and look better in the day. They're a stylish rectangular shape and 50 percent more illuminating.

MAINTENANCE-FREE BATTERY.
Forget about checking fluid levels, this 60AH battery is completely sealed and built to last.

CARPETED TRUNK.
There's a full 11.3 cubic feet of space here with a covered spare tire and a convenient remote control to open the trunk from the driver's seat.

FULL CARPETING.
No scrimping here. The floors are wall-to-wall with rich carpeting that gives a feeling of luxury and keeps out noise as well.

STEEL-BELTED RADIAL TIRES.
All Nissan Sentras have steel-belted radials for long wear and great handling.

3-SPEED AUTOMATIC TRANSAXLE.
Optional on many Nissan Sentras, this transaxle has a lock-up torque converter which reduces slippage and increases efficiency.

MacPHERSON STRUT SUSPENSION.
Independently sprung front wheels help get the power to the ground on even the most undulating roads as well as aiding handling and ride.

POWER FRONT DISC BRAKES.
For sure stopping with minimum effort, all Nissan Sentras have power brakes. The front discs also help reduce brake fade.

LOW-BACK RECLINING SEATS.
Lean back and enjoy the comfort. Right at hand, you'll find conveniences such as remote fuel-filler and trunk latches. And for rear-seat passengers in Deluxe and XE 2-Door models there's a walk-in device which releases the seat back and slides the seat forward to make getting in easier.

INDEPENDENT REAR SUSPENSION.
Trailing-arm geometry and coil springs aid handling and contribute to a less obstructed cargo area. You get a smoother ride because each wheel reacts to the road exclusive of the others.

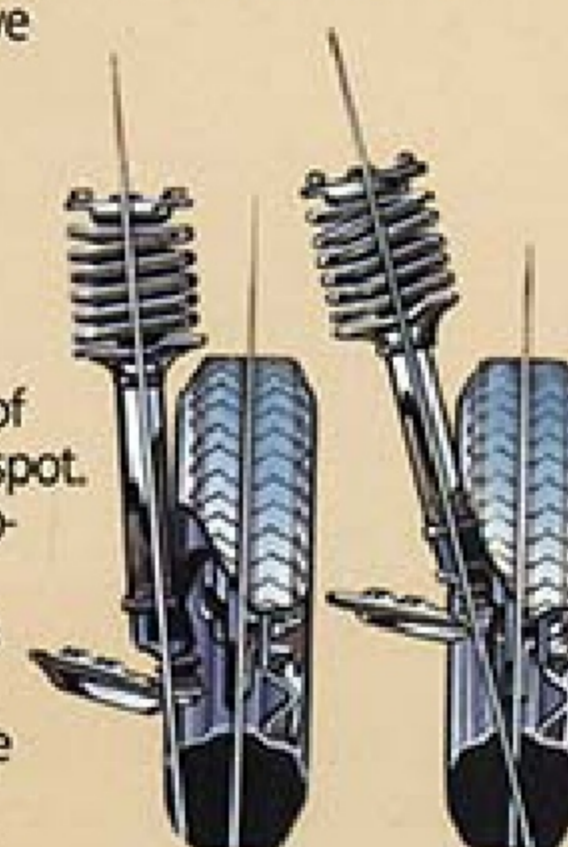
NEGATIVE SCRUB-RADIUS STEERING GEOMETRY

Many cars have positive scrub-radius steering, which gives them a tendency to "pull" the steering wheel if you have a flat, if you brake while you're turning the steering wheel or if one of the front tires hits a slick spot.

Nissan's negative scrub-radius steering solves that. Look at the pictures here and you'll see that the difference is the angle of the steering pivot.

If the pivot line points toward a spot inside of the place where the tire contacts the road, you've got positive scrub-radius (left picture) and a car that can try to steer itself in the conditions mentioned above.

But if the pivot line points outside the center of the contact patch, as in the Nissan Sentra, you've got negative scrub-radius (right picture) and a car that leaves the steering up to you.

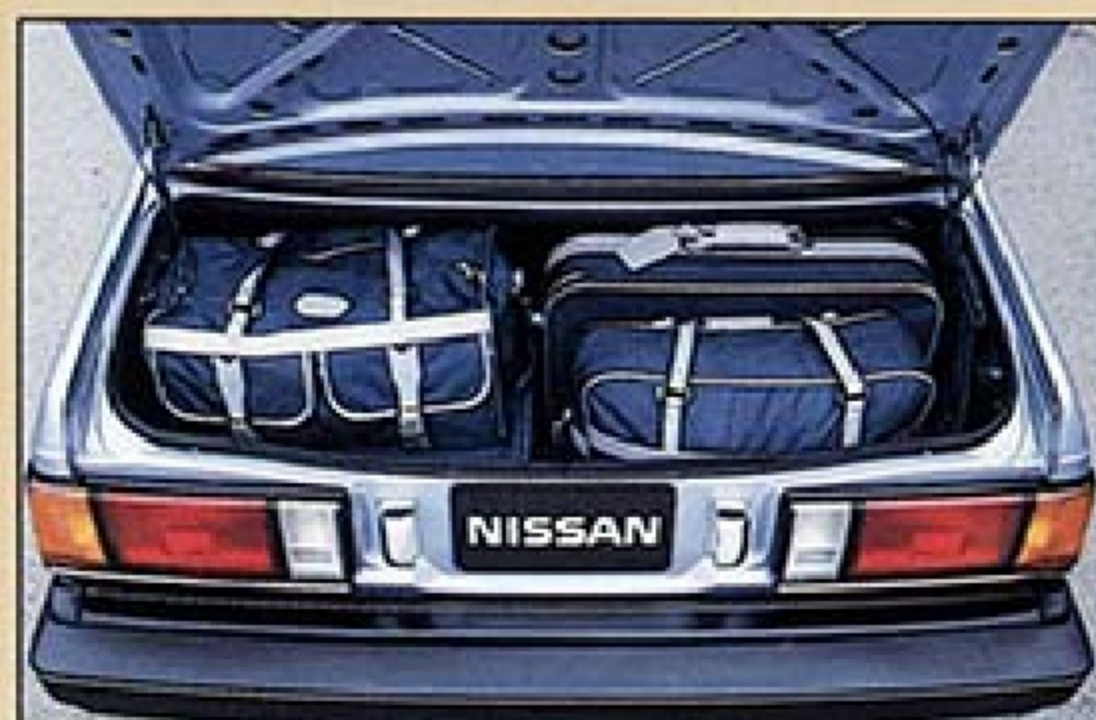
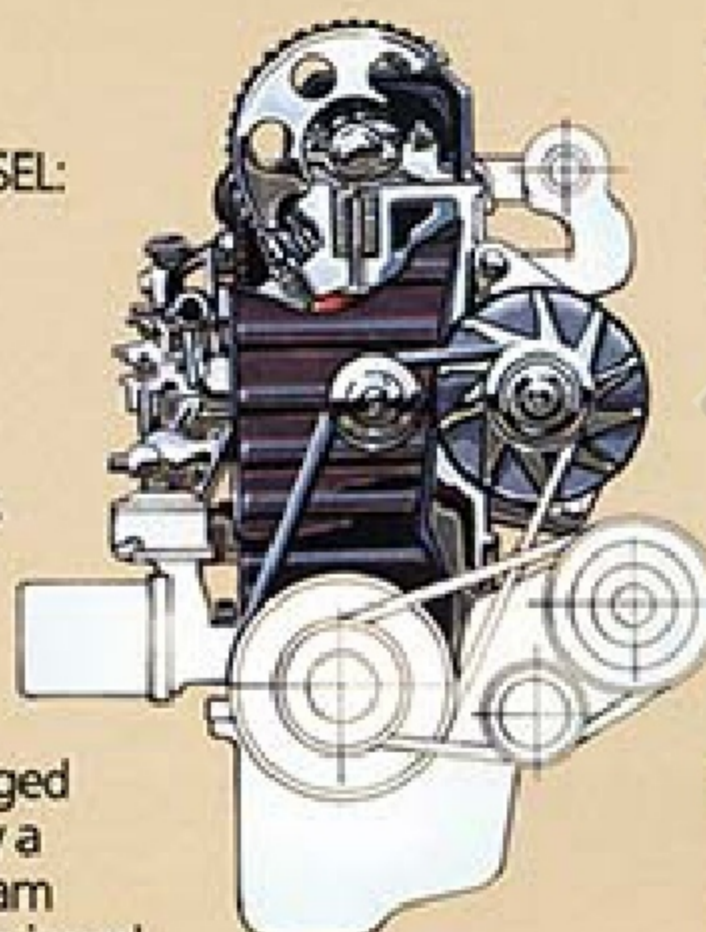


NISSAN SENTRA'S DIESEL: OUR MAXIMUM MPG MOTOR

Sophisticated simplicity and high-mileage efficiency define the boundaries of the Nissan Sentra's 1.7-liter diesel engine. At its core is a tough, cast-iron block for rugged long life. It's topped by a light-alloy, overhead-cam cylinder head that's designed to pass the fuel/air mixture through the combustion process with maximum efficiency.

A Diesel Kiki/Bosch pump injects fuel directly into the combustion chamber. Because it's a distributor-type pump, it makes balancing fuel flow to all the cylinders simple and precise.

For fast starts in cold weather, the Nissan Sentra Diesel has an electric glow plug in each cylinder. With the four-speed overdrive transaxle in the Deluxe MPG Diesel 2-Door, it has the highest mileage of any car we sell.



You can lock plenty of luggage safely out of sight in the voluminous trunk of every Nissan Sentra Sedan.



The XE Hatchback Coupe's cargo area comes with full carpeting and a convenient split fold-down rear seat.



The cargo area of the Nissan Sentra 4-Door Wagon is voluminous for utility and it's carpeted for quiet luxury.



XE Coupe, XE Wagon and Deluxe Wagon have standard wiper and washer on the hatch to keep the rear view clear.

GENUINE NISSAN ACCESSORIES: ADD VALUE TO YOUR SENTRA.

For 50 years, Nissan Motor Co., Ltd., has been building cars and trucks with a concentrated dedication to quality.

This uncompromising approach includes every facet of a vehicle's evolution, from conception to manufacture, and extends to accessories. Every item is tested and inspected for fit, workmanship and overall adaptability to your car.

You can be certain that each accessory is designed to mesh perfectly with the standard features of your Nissan Sentra and add to its value and utility. Genuine Nissan Accessories—you can rely on them.



AM/FM stereo with cassette deck and 5 pre-set buttons.



AM/FM stereo radio with an auto-reverse cassette deck.



Color coordinated floor mats protect Sentra's carpets.



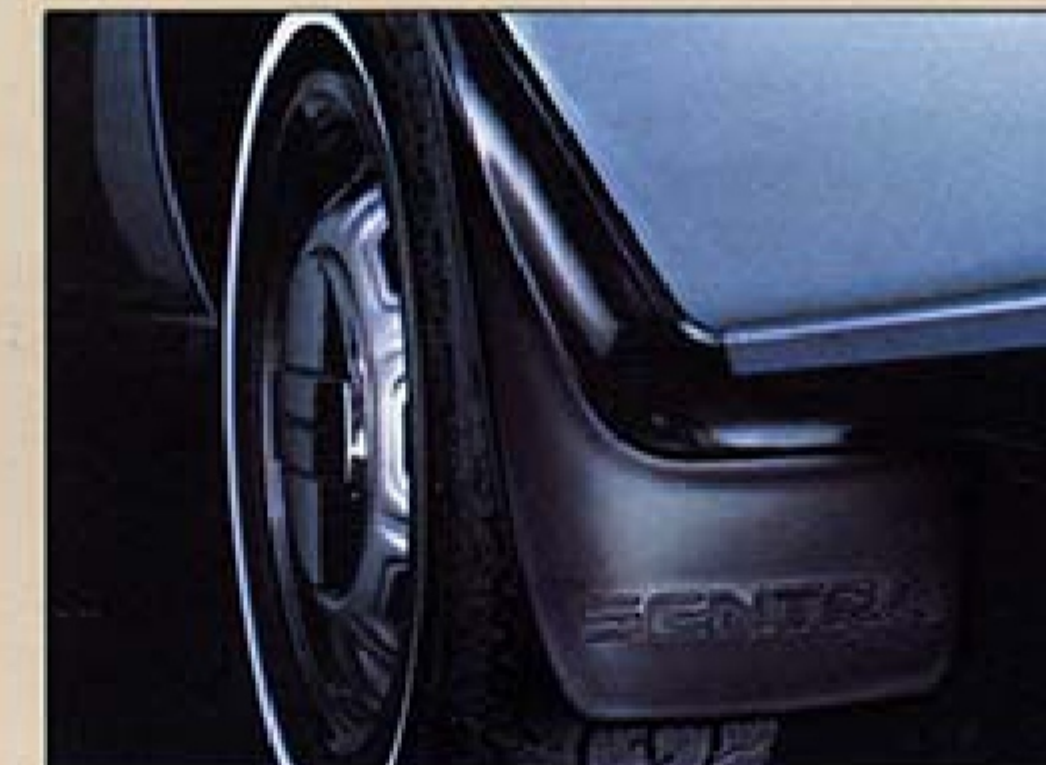
Custom shade kit helps XE Hatchback beat the heat.



Cassette deck comes with handy central storage console.



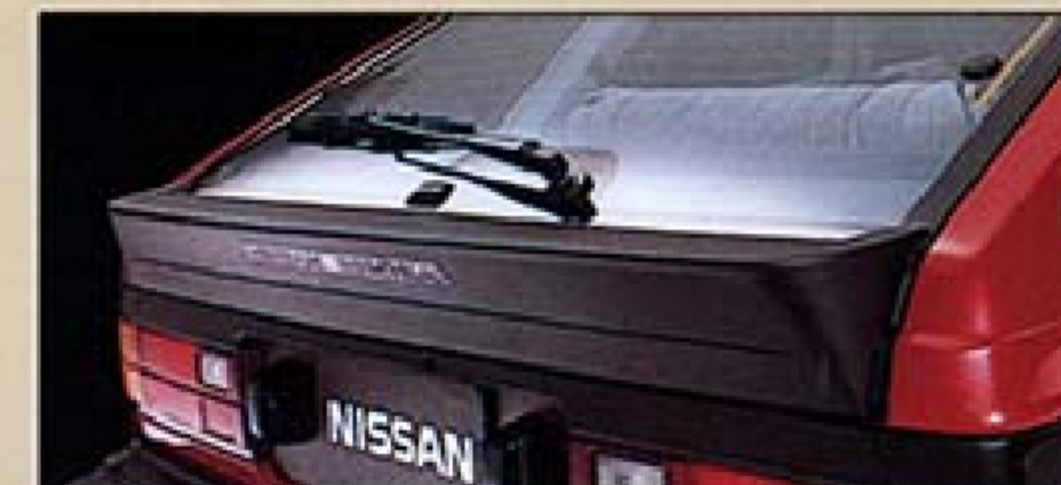
Strap that extra luggage to a stainless steel deck rack.



Splash guards protect lower body from stones, road grit.

ACCESSORIES NOT SHOWN:
Rocker Moldings and Wheel Lip Moldings. Tough stainless steel protects from chipping and looks great.
Speaker Kits. Put the "high" into hi-fi.
Pillar-Mount Antenna. Retracts out of sight into the windshield pillar.
Engine Block Heater. Just plug it in and it keeps the engine warm for fast cold-weather starts.
Passenger Side Mirrors. They adjust from inside.
Digital Quartz Clock. Stay on time electronically.
Genuine Nissan Car Care Products. Everything you need to help keep your Sentra looking and acting showroom new.
Retractable Storage Cover. Keep your valuables out of sight in the back of Nissan Sentra Wagons.
Halogen Fog Lights. Light up the night in any weather.

ACCESSORIES SHOWN ELSEWHERE:
Air Conditioning. It's fully integrated with the ventilation system and has an "economy" setting.
Wheel Trim Rings. Add a finishing touch of elegance with these handsome accessories.
4-Seasons Roof Rack. Good looking and practical, it lets you carry an extra load. Ski and bike attachments are also available.
Aluminum Wheels. Add a sporty look to any Nissan Sentra.



This rear spoiler helps cut drag for more efficiency.



Custom fitted car cover helps keep the finish sparkling.

MECHANICAL FEATURES	Standard 2-Door	Deluxe 2-Door	Deluxe MPG Diesel 2-Door	Deluxe 4-Door	Deluxe Wagon	XE 2-Door	XE 4-Door	XE Wagon	XE Coupe
Engine									
1.6-liter (1,597 cc) 4-cyl. OHC	Std	Std	—	Std	Std	Std	Std	Std	Std
1.7-liter (1,681 cc) 4-cyl. OHC Diesel	—	—	Std	—	—	—	—	—	—
Transaxle									
4-speed over-drive manual all-synchromesh with 3.550 final drive ratio	—	—	Std	—	—	—	—	—	—
5-speed over-drive manual all-synchromesh with 3.789 final drive ratio	Std	Std	—	Std	Std	Std	Std	Std	Std
3-speed automatic with lock-up torque converter and 3.600 final drive ratio	—	Opt	—	Opt	Opt	Opt	Opt	Opt	Opt
Electrical									
Transistorized ignition system	Std	Std	—	Std	Std	Std	Std	Std	Std
Solid-state voltage regulator	Std	Std	Std	Std	Std	Std	Std	Std	Std
Maintenance-free battery, 12V, 60AH	Std	Std	—	Std	Std	Std	Std	Std	Std
Brakes, Steering and Suspension									
Power front disc/rear drum brakes	Std	Std	Std	Std	Std	Std	Std	Std	Std
Rack-and-pinion steering	Std	Std	Std	Std	Std	Std	Std	Std	Std
Power steering	—	—	—	—	Std	Std	Std	Std	Std
Fully independent suspension: MacPherson strut front/trailing arm rear	Std	Std	Std	Std	Std	Std	Std	Std	Std
Front stabilizer bar	Std	Std	—	Std	Std	Std	Std	Std	Std
Brake wear warning sensor	Std	Std	Std	Std	Std	Std	Std	Std	Std
Tilt steering column	—	Std	—	Std	Std	Std	Std	Std	Std
Wheels and Tires									
4 1/2 J13 styled steel wheels	Std	Std	Std	Std	Std	Std	Std	Std	Std
Half covers	—	Std	Std	Std	Std	Std	Std	Std	Std
155 SR13 steel-belted radial blackwall tires	Std	—	—	—	—	—	—	—	—
155 SR13 steel-belted radial whitewall tires	—	—	Std	—	—	—	—	—	—
175/70 SR13 steel-belted radial whitewall tires	—	Std	—	Std	Std	Std	Std	Std	—
175/70 SR13 steel-belted radial tires with raised white letters	—	—	—	—	—	—	—	—	Std
EXTERIOR FEATURES									
Wipers/Washers									
2-speed windshield wiper/washer	Std	Std	Std	Std	Std	Std	Std	Std	Std

EXTERIOR FEATURES (Cont.)	Standard 2-Door	Deluxe 2-Door	Deluxe MPG Diesel 2-Door	Deluxe 4-Door	Deluxe Wagon	XE 2-Door	XE 4-Door	XE Wagon	XE Coupe
REAR-WINDOW WIPER/WASHER	—	—	—	—	Std	—	—	Std	Std
INTERMITTENT WIPER FEATURE	Std	Std	Std	Std	Std	Std ³	Std ³	Std ³	Std ³
WINDOWS									
Clear glass windows	Std	—	—	—	—	—	—	—	—
Tinted glass windows	—	Std	Std	Std	Std	Std	Std	Std	Std
Roll-down rear side windows	—	—	—	Std	Std	—	Std	Std	—
Flip-out rear side windows	Std	Std	Std	—	—	Std	—	—	Std
Remote rear-window openers	—	—	—	—	Std ⁴	—	—	Std ⁴	Std
Other									
Black door mirror	Std	Std	Std	Std	Std	—	—	—	—
Dual remote-control black mirrors	—	—	—	—	Std	Std	Std	Std	Std
Halogen headlights	—	Std	Std	Std	Std	Std	Std	Std	Std
Polypropylene bumpers	Std	Std	Std	Std	Std	Std	Std	Std	Std
Corrosion protection	Std	Std	Std	Std	Std	Std	Std	Std	Std
INTERIOR FEATURES									
Instruments									
Speedometer	Std	Std	Std	Std	Std	Std	Std	Std	Std
Tachometer	—	—	—	—	Std	Std	Std	Std	Std
Trip odometer	—	Std	Std	Std	Std	Std	Std	Std	Std
Fuel gauge	Std	Std	Std	Std	Std	Std	Std	Std	Std
Coolant temperature	Std	Std	Std	Std	Std	Std	Std	Std	Std
Warning clock	—	Std	Std	Std	Std	Std	Std	Std	Std
Warning Lights									
Parking brake/low fluid	Std	Std	Std	Std	Std	Std	Std	Std	Std
Charging	Std	Std	Std	Std	Std	Std	Std	Std	Std
Hazard flasher	Std	Std	Std	Std	Std	Std	Std	Std	Std
High beam	Std	Std	Std	Std	Std	Std	Std	Std	Std
Oil pressure	Std	Std	Std	Std	Std	Std	Std	Std	Std
Rear-window defroster	Std	Std	Std	Std	Std	Std	Std	Std	Std
Safety belt	Std	Std	Std	Std	Std	Std	Std	Std	Std
Low fuel	—	—	—	—	—	Std	Std	Std	Std
Stoplight/headlight/taillight bulb failure	—	—	—	—	—	Std	Std	Std	Std
Heating/Ventilation									
Bi-level heater/defroster with 4-speed fan	Std	Std	Std	Std	Std	Std	Std	Std	Std
Air conditioning with economy mode	Opt	Opt	Opt	Opt	Opt	Opt	Opt	Opt	Opt
Side-window defoggers	Std	Std	Std	Std	Std	Std	Std	Std	Std
Electric rear-window defroster with timer	Std	Std	Std	Std	Std	Std	Std	Std	Std
Seating									
Walk-in device	—	Std	Std	—	—	Std	—	—	Std
Split fold-down rear seat	—	—	—	—	Std	—	—	Std	Std
Other									
Color-coordinated removable cargo cover	—	—	—	—	—	—	—	—	Std

INTERIOR FEATURES (Cont.)	Standard 2-Door	Deluxe 2-Door	Deluxe MPG Diesel 2-Door	Deluxe 4-Door	Deluxe Wagon	XE 2-Door	XE 4-Door	XE Wagon	XE Coupe	
INTERIOR FEATURES										
Cargo light	—	—	—	—	—	—	—	Std	Std	
Passenger-side vanity mirror	—	Std	Std	Std	Std	Std	Std	Std	Std	
Center console	—	Std	Std	Std	Std	Std	Std	Std	Std	
Remote, locking fuel-filler door	—	Std	Std	Std	Std	Std	Std	Std	Std	
Remote trunk release	—	Std	Std	Std	Std	Std	Std	Std	Std	
AM/FM stereo	Opt ⁵	Opt ⁵	—	Opt ⁵	Opt ⁵	Std	Std	Std	Std	
Full carpeting	Std	Std	Std	Std	Std	Std	Std	Std	Std	
Color-coordinated 2-spoke steering wheel	Std	Std	Std	Std	Std	—	—	—	—	
Wrapped-look, color-coordinated 2-spoke steering wheel	—	—	—	—	—	Std	Std	Std	Std	
Child-safety rear door locks	—	—	—	Std	Std	—	Std	Std	—	
SAFETY FEATURES										
Safety belts for 5 passengers	Std	Std	Std	Std	Std	Std	Std	Std	Std	
Dual brake system	Std	Std	Std	Std	Std	Std	Std	Std	Std	
4-way hazard warning lights	Std	Std	Std	Std	Std	Std	Std	Std	Std	
Backup lights	Std	Std	Std	Std	Std	Std	Std	Std	Std	
Safety door locks	Std	Std	Std	Std	Std	Std	Std	Std	Std	
Energy-absorbing steering column	Std	Std	Std	Std	Std	Std	Std	Std	Std	
Front safety-belt warning light	Std	Std	Std	Std	Std	Std	Std	Std	Std	
DIMENSIONS AND WEIGHT										
Wheelbase (in.)	94.5	94.5	94.5	94.5	94.5	94.5	94.5	94.5	94.5	
Length (in.)	167.3	167.3	167.3	167.3	172.3	167.3	167.3	172.3	167.3	
Width (in.)	63.8	63.8	63.8	63.8	63.8	63.8	63.8	63.8	63.8	
Height (in.)	54.5	54.5	54.5	54.5	53.5	54.5	54.5	53.5	53.3	
Turning diam. curb-to-curb (ft.)	29.5	29.5	31.5	29.5	29.5	29.5	29.5	29.5	29.5	
Curb wgt. (lbs.) ⁶	1945	1973	2072	1993	2075	2006	2026	2092	2083	
Fuel cap. (gal.)	13.2	13.2	10.5	13.2	13.2	13.2	13.2	13.2	13.2	
Horsepower	69	69	55	69	69	69	69	69	69	
Torque (lbs.ft.)	92	92	75	92	92	92	92	92	92	
1984 E.P.A. ESTIMATED NISSAN SENTRA MILEAGE										
	DIESEL 4-SPEED	5-SPEED	AUTO							
49-States HWY MPG/EST MPG	66/(50)	49/(35)	39/(30)							
California HWY MPG/EST MPG	66/(50)	49/(35)	39/(29)							
<p>1984 E.P.A. estimates. Remember, use the EPA estimated MPG for comparison. Your actual mileage may differ depending upon speed, weather and trip length. Actual highway mileage will probably be less.</p> <p>Nissan Motor Corporation in U.S.A. and your Datsun Dealer urge you to be a smart driver and use your safety belt whenever you drive. It does save lives. Remember, if you don't belt yourself, you're kidding yourself.</p>										
<p>All illustrations and specifications in this catalog are based on the latest product information available at time of publication. Nissan Motor Corporation in U.S.A. reserves the right to make changes at any time, without notice, in prices, colors, materials, equipment, specifications and models, and to discontinue models or equipment. For information on additional options and accessories, contact your Datsun dealer. All specifications, options and accessories shown in this catalog apply to the 49 states. Specifications, options and accessories may differ in Hawaii, U.S. territories and other countries.</p>										

Nissan is proud to sponsor
ABC-TV's telecasts of the 1984
Summer Olympic Games

© 1981 ABC Inc.

"Star in Motion" © 1980 L.A. Olympic Committee



MAJOR MOTION FROM NISSAN...AT YOUR DATSUN DEALER



Nissan Pulsar NX. The 5-seat sports car.



Nissan Maxima. Luxury in motion.



Nissan Stanza. Family fitness.



Nissan 300 ZX. A legend is born.



Datsun 200 SX. Sporty sophistication.



Nissan Truck. Rough, tough value.

COME ALIVE, COME AND DRIVE

SENTRA

MAJOR MOTION
FROM NISSAN



SEN-WE-10-83 575M-AL-1

© Copyright 1983, Nissan Motor Corporation in USA.