

PH-001 18/81 00600-0402 Litho in U.S.A. 100mm
© 1983 Toyota Motor Sales, U.S.A., Inc.

WHO
COULD ASK **TOYOTA**
FOR ANYTHING
MORE!

COROLLA

BY TOYOTA



COROLLA MEANS MORE FOR YOU

Corolla. It's a name you'll hear around the world. It means more choices, more value, more of what you want in economical, reliable transportation. That's why Corolla is Toyota's best-selling car line, and one of the world's most popular cars.

Corolla means roomy, practical 4-Door Sedans and 5-Door Liftbacks with front-wheel drive traction and seating for five. Corolla means sporty GT-S twin cars and the sleek SR5 Sport Liftbacks and Sport Coupes. Front-wheel drive Corollas are equipped with proven, reliable, fuel-efficient* 1.6 liter SOHC engines to give you responsive power for quick starts in traffic and long-distance highway cruising. A smooth-shifting 5-speed manual overdrive transmission is standard. Or choose a 4-speed automatic overdrive transmission or 3-speed automatic, both with gas-saving lock-up torque converter.

The popular LE Sedan is loaded with standard features like an AM/FM/MPX receiver with four speakers, dual remote controlled mirrors, tilt steering wheel, and tinted glass with an upper shade band.

For the ultimate Corolla, choose the LE Limited Sedan with its distinctive aluminum alloy wheels, two-tone paint, color-keyed bumpers, chrome trim, special power conveniences, and luxury interior.

No matter which Corolla you choose, you'll have one of the world's best automotive values.

WHO COULD ASK FOR ANYTHING MORE!

*See EPA mileage statement on Specifications page.
Shown with optional equipment. See Features chart for details.



COROLLA LE SEDAN

COROLLA SPORT
COROLLA

MORE COMFORT AND CONVENIENCE

Inside the Corolla LE Sedan, there's more luxury, comfort and convenience than you'd ever expect in an economical car. Front-wheel drive design allows a nearly flat floor for more leg room so five adults can ride in relaxed comfort. Large windows, a recessed dashboard, and carefully engineered interior space create an open, airy environment.

The Corolla LE Sedan's seats are upholstered in rich velour fabric and are carefully contoured to give you comfortable support mile after mile. Both front seatbacks recline and the driver's seat adjusts 6-ways, including lumbar support. The split rear seatbacks fold down, combining trunk and rear seat area for spacious cargo capacity. Thick, needle-punch carpeting is underfoot. The doors have extra padding on the upper section with door pockets below. There's a new, larger central console compartment with a cassette holder. A tilt steering wheel is standard, as is the AM/FM/MPX 4-speaker sound system.

The rear doors have child-protector locks and there's a built-in anchor behind the rear seats for the top tether strap of approved child safety seats.

Inside the Corolla LE Sedan you'll find all of these comfort and convenience features—and more—that will add to the feeling of satisfaction you'll experience in driving one of the world's most popular cars.

Who could ask for anything more! Shown with optional equipment. See Features chart for details.



FULL INSTRUMENTATION



COROLLA LE SEDAN INTERIOR

COROLLA SPORT

YOUR DELUXE CHOICE

Whether you prefer the crisp lines of the 4-Door Deluxe Sedan or the stylish utility of the 5-Door Deluxe Liftback, you'll find value-packed features inside and out.

In both models, front-wheel drive, independent rear suspension, rack-and-pinion steering and a transverse-mounted 1.6 liter SOHC engine combine for spirited performance and handling. A smooth-shifting 5-speed manual overdrive transmission is standard, or you can have the optional 3-speed automatic transmission with a fuel-saving* lock-up torque converter.

The 5-Door Deluxe Liftback seats five passengers in comfort. If you need to haul an extra large load, simply flip down the split rear seat-backs and you have 35.6 cubic feet of cargo area. In the 4-Door Deluxe Sedan, five adults ride comfortably, and there are still 127 cubic feet of room available in the trunk.

The Deluxe Corollas feature reclining front seats, thick pile carpeting, all-season radial tires with styled steel wheels and power-assisted brakes. There's a full range of options, too: power sunroof, air conditioning, stereo cassette sound systems, stereo steering and a Convenience Package.

If you want more value and more long-term satisfaction, the Corolla Deluxe Sedan and Deluxe Liftback give you a superb choice.

Who could ask for anything more!

*See EPA mileage statement on Specifications page.

Shown with optional equipment. See Features chart for details.



DELUXE SEDAN CLOTH INTERIOR



COROLLA 4-DOOR DELUXE SEDAN AND 5-DOOR DELUXE LIFTBACK

QUALITY ENGINEERING

MORE PERFORMANCE

SUPERIOR HANDLING
MacPherson strut front suspension, rack-and-pinion steering, and front disc brakes work together for precise cornering and stability.



COROLLA L.E. LIMITED SEDAN



4-SPEED AUTOMATIC OVERDRIVE TRANSMISSION



5-SPEED MANUAL OVERDRIVE TRANSMISSION



FRONT DISC BRAKES



TUNGSTEN HALOGEN HEADLIGHTS

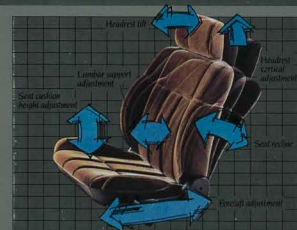
FEATURE PACKED
Depending on the model you choose, you can have a smooth-shifting 5-speed manual overdrive transmission, or optional 3-speed or 4-speed automatic overdrive with gas-saving* lock-up torque converter.

MORE INTERIOR COMFORTS

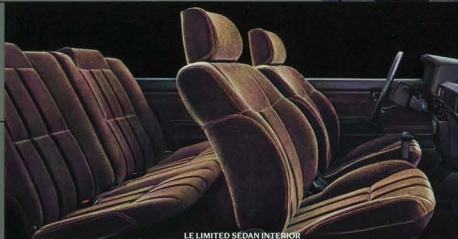
CONVENIENCES
The Power Package is standard on L.E. Limited and optional on L.E. Reclining front bucket seats with height and lumbar support adjustments are standard in L.E. and L.E. Limited Sedans.



POWER MIRROR CONTROL



L.E. LIMITED SEDAN'S 6-WAY ADJUSTABLE DRIVER'S SEAT



L.E. LIMITED SEDAN INTERIOR



POWER WINDOWS

POWER DOOR LOCKS

DRIVING PLEASURE

Combine 1.6 liters of muscle, advanced front-wheel drive, and independent suspension and you get Corolla's responsive handling and satisfying performance.



FRONT-WHEEL DRIVE 1.6 LITER SOHC ENGINE AND FRONT SUSPENSION



AERODYNAMIC DESIGN



Corolla Sedan with 5-speed manual overdrive transmission.
*1986 preliminary mileage figures shown. 1986 EPA mileage figures not available at time of printing. See your Toyota dealer for details.

AERODYNAMICS

Aerodynamic design, with a low 0.34 drag coefficient, means increased fuel economy and quieter running. Corolla's clean styling with streamlined headlights makes it as good-looking as it is fuel efficient.



ADVANCED DESIGN FOR ROOM AND CARGO SPACE



LIFTBACK CARGO AREA

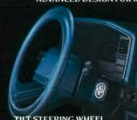
CARGO CAPABLE

Just flip down the split rear seatbacks to combine trunk/cargo area and rear seating areas into one large cargo space in the L.E. Limited, L.E. Sedan and all Liftbacks.

Shown with optional equipment. See Features chart for details.



CRUISE CONTROL



TILT STEERING WHEEL



VARIABLE ASSIST POWER RACK AND PINION STEERING



FOLD-DOWN SPLIT REAR SEATBACKS

LIKE YOUR COROLLA HOT?

Twin cams, 16-valves, and electronic fuel injection make the Toyota Corolla GTS Sport Liftback or Coupe a heavy-hitter. It reaches its 112 hp rapidly and smoothly, delivering instant power to the rear wheels when you need it—more power for passing, blending into fast moving traffic, and cruising effortlessly on the open highway.

And what fun! Behind the wheel, you'll experience precise throttle control, the quick response of rack-and-pinion steering, the smooth-shifting of a close-ratio 5-speed manual overdrive, and the taut handling of a refined suspension. Tap the accelerator and watch the tach head for the 7500 rpm redline. Stopping power for this high performance sportster is provided by power-assisted front ventilated 4-wheel disc brakes. An optional limited-slip differential completes this high performance package.

With its front air dam, retractable halogen headlights, and wide-track, low-profile, speed-rated 195/60R14 steel-belted tires, the GTS looks every bit as hot as it is.

All the performance, handling and styling of the Corolla GTS Sport models come at an affordable price. And, of course they offer more than high performance. They have the economy, reliability and craftsmanship that is traditionally Toyota. Who could ask for anything more!

Shown with optional equipment. See Features chart for details.



COROLLA GTS SPORT COUPE



COROLLA GTS SPORT LIFTBACK

HIGH-PERFORMANCE COMFORT

The interior of the Corolla GTS is as compatible with high-performance driving as the 16-valve engine under the hood. The driver's Sport Seat adjusts 6-ways, both front bucket seats are bolstered to hug your torso in tight turns, the tilt steering wheel and gear shift are leather-wrapped for a commanding grip, and a comprehensive array of instruments keeps you informed. Easy-to-read oil pressure and coolant gauges flank a large 7500 rpm redline tachometer and a 150 mph speedometer.

Controls for the retracting halogen headlights, intermittent windshield wipers/washers and other functions are within a finger's reach. There's even an automatic system that turns the headlights off, should you forget.

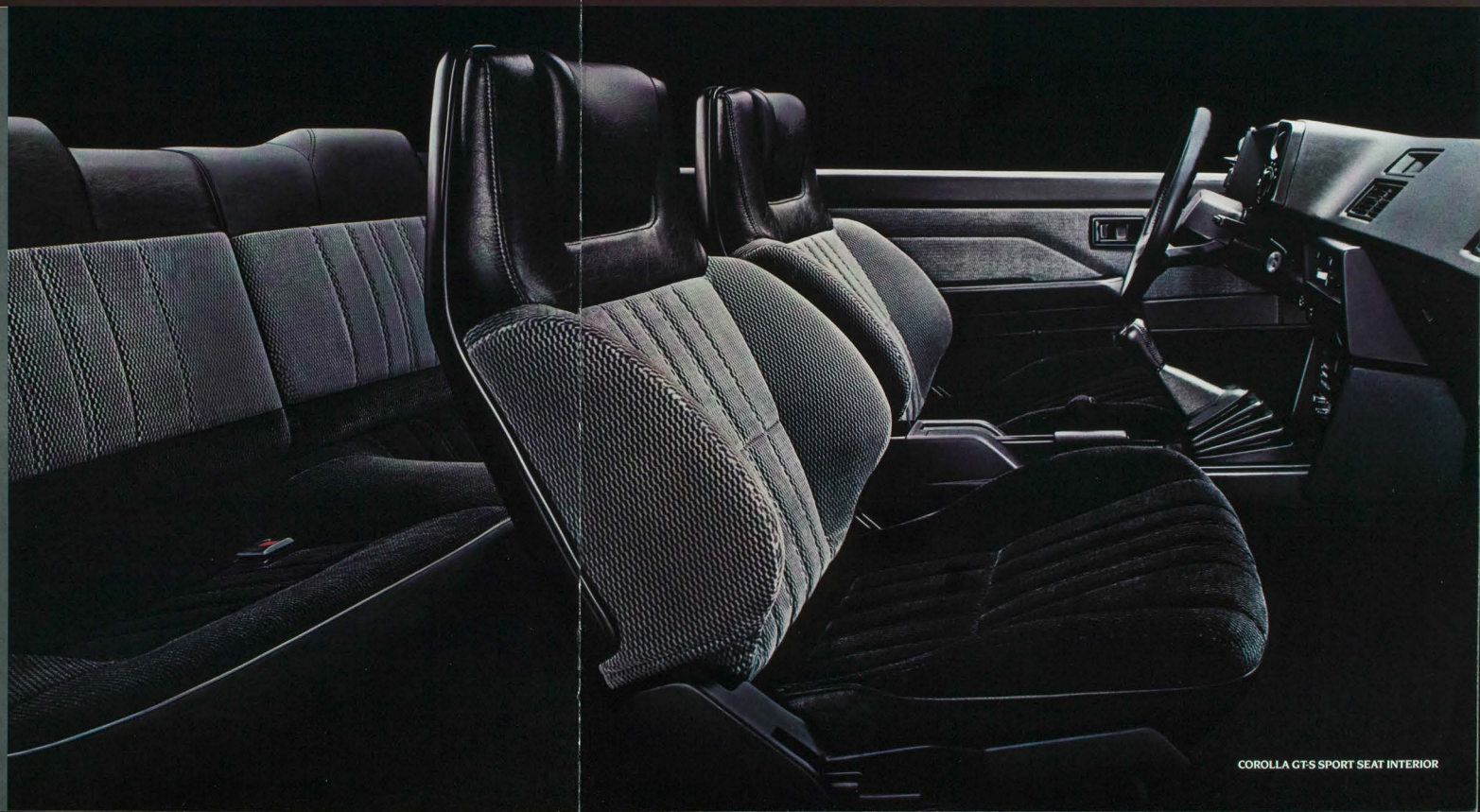
Wraparound rear seats give more comfort and, like the front bucket seats, are covered in sporty textured fabric. The carpeting is thick cut-pile. There's even a cup holder built into the console.

For entertainment, there's an AM/FM/MPX receiver with four speakers. Dual-stage air conditioning, power sunroof, power windows, and cruise control are among the available options.

Whether you're driving through city streets or relaxing for a long highway cruise, the interior of the GTS lets you experience the pleasures of a high-performance machine in a total driver's environment.

Who could ask for anything more!

Shown with optional equipment. See Features chart for details.

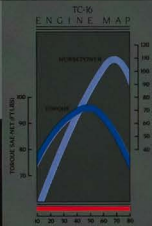


COROLLA GTS SPORT SEAT INTERIOR

TWIN CAM TECHNOLOGY

MORE PERFORMANCE

MORE POWER
The 1.6 liter twin cam 16-valve engine produces 112 hp with a broad power band and smooth torque curve. Its output per liter ranks with some of the world's most respected sports/racing engines.



HIGHWAY HANDLING
An aerodynamic shape, new front air dam and retracting halogen headlights cheat the wind. 4-link rear suspension and 4-wheel disc brakes tame the road below.



SMOOTH-SHIFTING
With the crisp, 5-speed manual overdrive transmission, you can use the high rev limits of the twin cam 16-valve engine to experience the thrill of high-performance driving.



MORE INTERIOR COMFORTS

SPORTS INSTRUMENTATION
Large, clear instrumentation, standard tilt steering wheel, and optional cruise control create a true driver's environment.



GOOD COMPANY
To keep you company while you drive, an AM/FM/MPX receiver with four speakers fills your GTS with your favorite sounds. Or choose an optional electronic AM stereo/FM/MPX tuner with cassette.

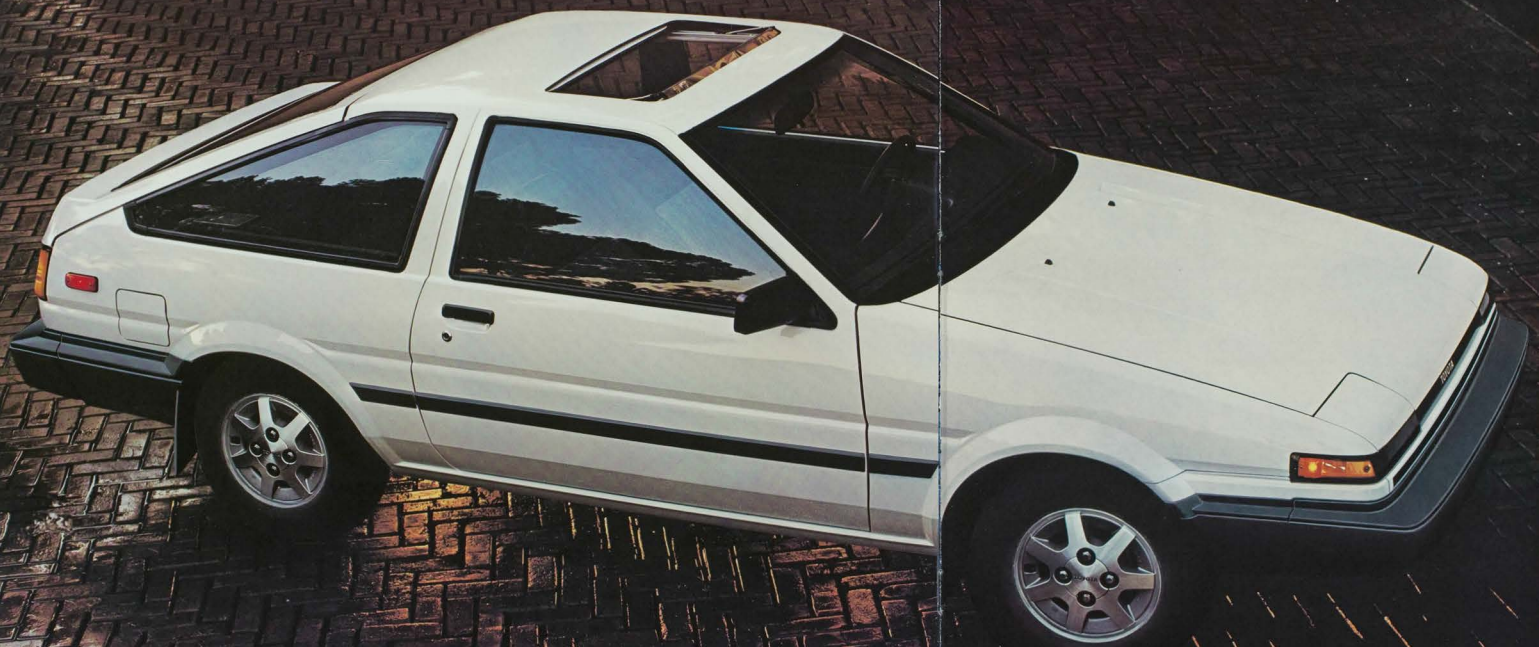


EASY DRIVING
Settle into the 6-way adjustable driver's seat, adjust the tilt steering wheel, set the outside mirrors electrically, and go! Fold down the split rear seatbacks and you've got room to spare for all your vacation luggage.

Skivara with optional equipment. See Features chart for details.



S P O R T Y E C O N O M Y



COROLLA SR5 SPORT LIFTBACK

You don't have to pay an astronomical price for great handling, exhilarating performance and sleek good looks. Check out the Corolla SR5 Sport Liftback or Coupe. Their sleek aerodynamic lines, 1.6 liter SOHC engines, rack-and-pinion steering, ventilated front disc brakes and tuned suspensions give you the sporty handling and performance you've been looking for.

You get standard features like reclining front bucket seats, tinted glass, AM/FM/MPX receiver and even an automatic-off headlight system. The seats are covered with sporty-textured cloth; the floor with thick carpet.

Aluminum alloy wheels, power sunroof, power-assisted steering, tilt steering wheel, dual-stage air conditioning, a cassette player and more are available for added convenience and style.

The Corolla SR5 Sport Liftback or Sport Coupe will fit nicely within your budget and give you more sporty performance and handling than you would ever have thought possible at an affordable price.

Who could ask for anything more! Shown with optional equipment. See Features chart for details.



COROLLA SR5 SPORT COUPE

