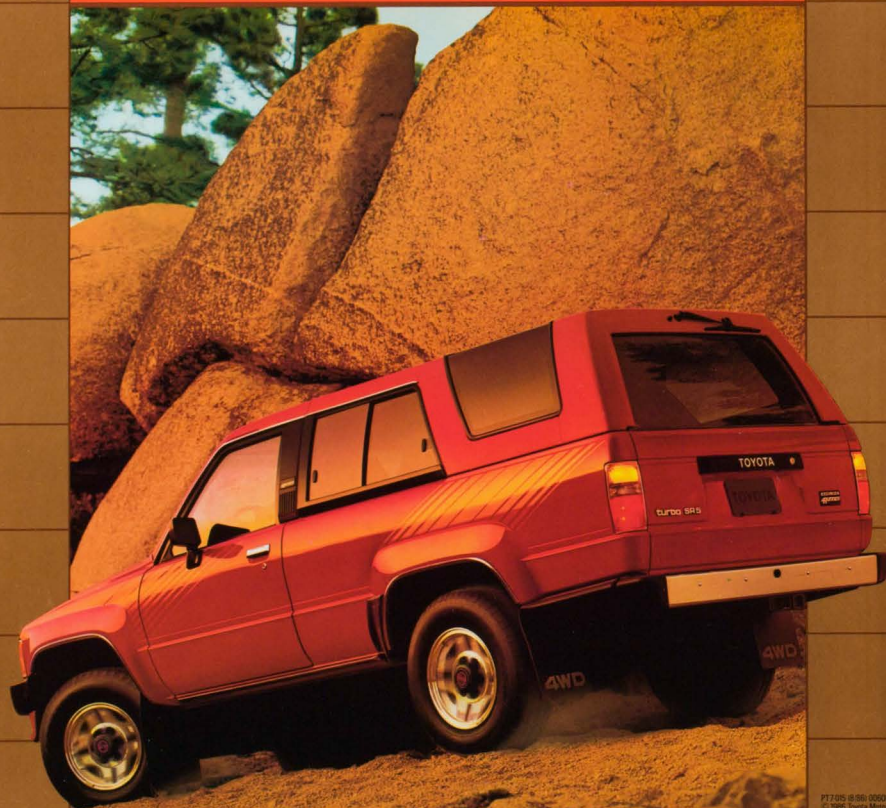




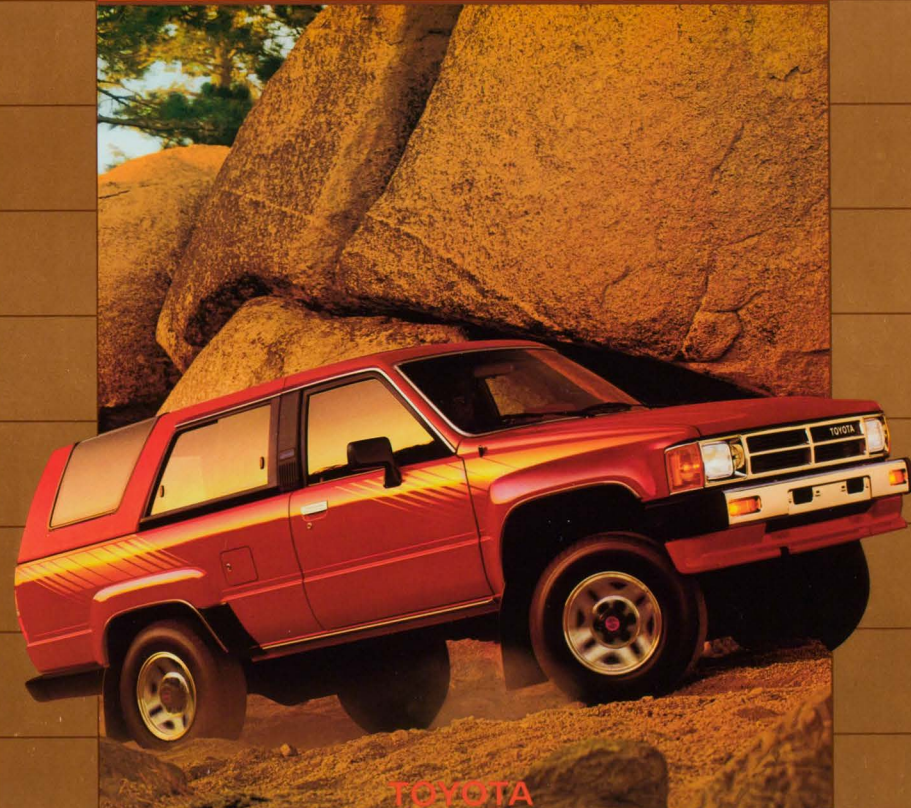
WHO TOYOTA
COULD ASK
FOR ANYTHING
MORE!



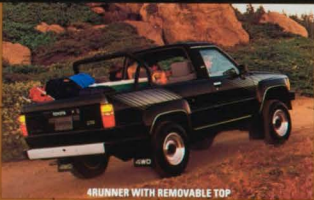
P1725 (R-96) 0500 0502 Ltr in U.S.A. 050M
© 1996 Toyota Motor Sales, U.S.A., Inc.

1 9 8 7

4RUNNER



TOYOTA



4RUNNER WITH REMOVABLE TOP

BOONDOCKS TO BOULEVARDS

Take Toyota's 4Runner out for a ride. With its durable fiberglass top removed for fresh-air fun, 4Runner is the versatile sport utility vehicle. It's powerful enough for off-road roaming and stylish enough to turn heads. This combination of features, plus traditional Toyota quality, has made 4Runner #1 in customer satisfaction.*

Drive the Toyota 4Runner SR5 Turbo. It has a 2.4 liter gas-turbo fuel-injected engine that puts out 135 hp at 4800 rpm—more than enough to hustle you up and over the toughest terrain. Take it to the highway, and you've got a stylish and sporty road-runner with lots of comfort for five passengers and convenience features you wouldn't expect to find in a rugged 4x4.

POWER PLUS

With either the turbocharged engine or the standard 116 hp 2.4 liter SOHC EFI engine, the 4Runner has plenty of power and low-end torque. Plus all the important off-road capabilities: 2-speed transfer case, tow hook and steel protector plates for the front suspension, fuel tank and transfer case, and, depending on the model, 5-speed manual overdrive transmission or an electronically controlled 4-speed automatic overdrive transmission. All 4Runners have Toyota's Hi-Trac independent front suspension with high ground clearance for precise handling and comfort.

Boondocks to boulevards, the stylish 4Runner achieves an unmatched combination of power, comfort and utility.

WHO COULD ASK FOR ANYTHING MORE!

*J.D. Power & Associates 1986 Compact Truck CSI (for 1985 sport utility 4x4s).

Shown with optional equipment. See page 6 for details.

Sport light bar not intended for occupant safety.



ACHIEVER

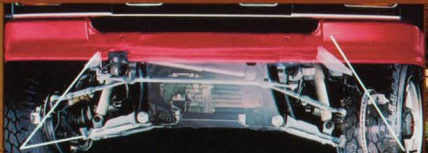
4RUNNER SR5 TURBO
Shown in Black

ADVANCED



UPPER TORSION BAR

DURABLE
Hi-Trac independent front suspension with high ground clearance aids off-road control. Steel plates protect the front suspension, transfer case and fuel tank.

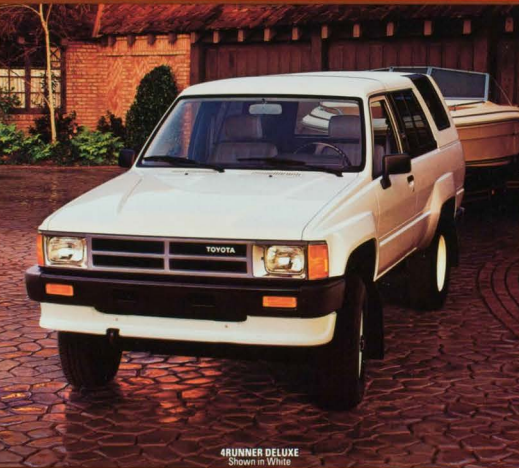


HI-TRAC INDEPENDENT FRONT SUSPENSION

Double A-arm independent suspension improves ride comfort and driver control on road and off.

Exclusive Toyota design gives the advantages of Hi-Trac independent front suspension, yet maintains high ground clearance.

Torsion bars are installed above the upper A-arms to ensure high ground clearance and help protect them from off-road obstacles.



4RUNNER DELUXE
Shown in White



HIGH GROUND CLEARANCE



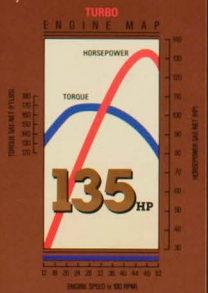
5-SPEED OVERDRIVE TRANSMISSION WITH 2-SPEED TRANSFER CASE



ECT 4-SPEED AUTOMATIC OVERDRIVE TRANSMISSION WITH 2-SPEED CASE

SMOOTH POWER

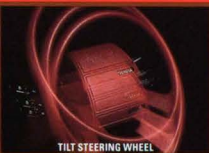
The standard transmission in the SR5 Turbo is an ECT 4-speed automatic overdrive transmission. SR5 and Deluxe models have a standard 5-speed manual overdrive transmission.



GAS-TURBO ENGINE



SR5 FULL INSTRUMENTATION



TILT STEERING WHEEL

EASY READING
Full instrumentation includes such off-road aids as an altimeter, roll and pitch meters monitor vehicle attitude when you are stopped.



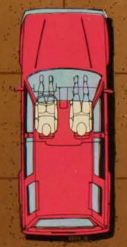
FOLD-DOWN SPLIT REAR SEATBACKS



SR5 SPORT SEAT INTERIOR
Shown in Red Cloth



5-PASSENGER SEATING



EASY RIDERS

The SR5 Turbo and 4Runner SR5 feature comfortable seating for five passengers. And there's an exciting new red cloth interior.



TOYOTA 5
POWER REAR WINDOW WITH WIPER/WASHER

For further information on features and options, see page 6.



	4Runner SRS Turbo 5 Passenger	4Runner SRS 5 Passenger	4Runner SRS 2 Passenger	4Runner Deluxe 2 Passenger
PERFORMANCE				
Turbocharged 2.4 liter 4 cylinder SOHC engine with electronic fuel injection	S	—	—	—
2.4 liter 4 cylinder SOHC engine with electronic fuel injection	—	S	—	—
5 speed manual overdrive transmission	—	S	S	S
Electronically controlled 4-speed automatic overdrive transmission (ECT) with shift pattern selector and lock up torque converter	S	—	0	—
2 speed transfer case	S	S	S	S
Power assisted brakes (front disc/rear drum with rear load sensing proportioning valve)	S	S	S	S
Free wheeling manual locking front hubs	S	—	—	—
Automatic locking front hubs	—	S	S	S
Steel belted all-weather P225/75R15 radial tires	S	S	S	S
Hi-Trac independent front suspension	S	S	S	S
Steel skid plates under front suspension, transfer case and fuel tank	S	S	S	S
Forged steel front tow hook	S	S	S	S
STYLING/DESIGN				
Styled steel wheels	—	S	S	S
Aluminum alloy wheels	S	0	0	—
Tungsten halogen headlamps	S	S	S	—
Dual sport styled outside mirrors with wide view passenger side convex mirror	S	S	S	S
Anti-chip protectant	S	S	S	S
Front and rear mudguards	S	S	S	S
Metallic paint	0	0	0	—
Rear window wiper/washer	S	S	S	S
Rear bumper	S	S	S	S
Rear drop bich receiver	S	S	S	S
Removable rear top	S	S	S	S
COMFORTS AND CONVENIENCES				
Tachometer, fuel level, oil press, voltmeter and coolant temp. gauges	S	S	S	S ¹
Inclinometer/altimeter	S	S	S	—
Power steering	S	S	S	0
Tilt steering wheel and adjustable intermittent wipers	S	0	0	—
Showering volume, automatic headlamp and wiper/washer controls	S	S	S	S
Mist cycle wipers/train steam wiper	—	—	—	S
Cruise control	0	0	0	—
Digital quartz clock	S	S	S	0
Power locked flip thru ventilation	S	S	S	—
Rear heater controls and ducts	S	S	S ²	S ³
Sport Seats with driver side 7 way adjustments	S	0	0	—
Reclining bucket seats with adjustable headrests and center console	S	S	S	S
Fold down split rear seatbacks	S	—	—	—
Cloth seat trim	S	S	S	0
Vinyl seat trim	—	—	—	S
Fall carpeting - front and rear	S	S	S	0 ⁴
Carpeted floor mats	0	0	0	—
Rubber floor mats	—	—	—	0
Air conditioning (blow air type)	0	0	0	0
Passenger side seat walk in device	—	—	—	—
Passengers seat inside door release	S	S	—	—
Passenger side cargo area door release	S	S	S	S
Semi-padded steel sport/light bar in rear	S	S	S	S ⁴
Dual rear storage compartments	S	S	S	S
Rear cargo area tie down hooks	S	S	S	S
Lockable rear trunk tailgate release	S	S	S	S
Power rear window	S	S	S	S
Electric rear window defogger	0	0	0	—
Sunk/monroof with removable sunshade	0	0	0	—
Front vent windows	S	S	0 ¹	—
Tinted glass with upper shaded windshield band	S	S	S	0 ¹
Tinted sliding side glass windows	S	S	S	0
Intrusion Monitoring System	—	0	0	0
Electronic AM stereo/FM/MPX tuner with 2 speakers	S	S	S	0 ¹
AM stereo/FM/MPX premium electronic tuner with 2 speakers	—	0	0	—
Electronic AM stereo/FM/MPX tuner with 2 speakers and auto-reverse cassette	S ⁴	0	0	—
Electronic TechnoCT AM stereo/FM/MPX tuner with 4 speakers, auto reverse/full logic cassette, 5 way acoustic flavor/tone control equalizer	0	0	0	—
7 band graphic equalizer/amplifier	0	0	0	0
PACKAGES				
Chrome Trim Chrome Wheel Package - chrome front bumper, chrome rear bumper, chrome trim, grille, wheels (silver metallic wheels and chrome wheel arch/trucker panel molding) on - Deluxe	0 ¹	0 ¹	0 ¹	0
Cruise Control Package - cruise control, variable intermittent windshield wipers, headlamp on warning	0	0	0	—
Power Package - power windows, power door locks, power antenna, power outside mirrors, courtesy light group and trouble light	0 ¹	0	0	—
Convenience Package - includes cloth seat trim, digital quartz clock, full carpeting - front and rear, and remote fuel filler door opener	S	S	S	0
Upgrade Package - includes front vent windows and tinted glass	—	S	S	0

¹With automatic transmission. ²With manual transmission. ³Fuel level and coolant temp. gauges only. ⁴Part of Convenience Package. ⁵Only heater ducts only. ⁶Not padded. ⁷Part of Upgrade Package. ⁸AM/FM/MPX tuner also available. ⁹MPX is a trademark of the Matsushita Electric Industrial Co., Ltd. ¹⁰Power windows and power door locks standard. ¹¹Technics is a trademark of the Matsushita Electric Industrial Co., Ltd.

	4Runner SRS Turbo 5 Passenger	4Runner SRS 5 Passenger	4Runner SRS 2 Passenger	4Runner Deluxe 2 Passenger
BODY/FRAME CONSTRUCTION				
	Welded steel cab/full box frame			
STEERING TYPE				
	Recirculating ball			
TURNING CIRCLE DIAMETER (CURB TO CURB)				
	37.4 ft.			
BRAKES				
	Power assisted (front disc/rear drum with rear load sensing proportioning valve)			
SUSPENSION FRONT				
	Tension bar with upper and lower A-arms, hydraulic shock absorbers and stabilizer bar			
SUSPENSION REAR				
	Leaf springs with staggered hydraulic shock absorbers			
ENGINE TYPE				
	GASOLINE - TURBO		GASOLINE	
DISPLACEMENT	4 cylinder SOHC EFI 2.4 liters (2360cc)		4 cylinder SOHC EFI 2.4 liters (2360cc)	
HORSEPOWER (SAE NET)	135 @ 4800 rpm		118 @ 4000 rpm	
TORQUE (SAE NET)	173 ft. lbs @ 2800 rpm		140 ft. lbs @ 2800 rpm	
EXTERIOR DIMENSIONS (inches)				
Wheelbase	103.0	103.0	103.0	103.0
Track width (front)	56.3	56.3	56.3	56.3
Track width (rear)	55.5	55.5	55.5	55.5
Overall length	174.8	174.8	174.8	174.8
Overall width	68.5	68.5	68.5	68.5
Overall height	66.1	66.1	66.1	66.1
Cargo bed length	79.5	79.5	79.5	79.5
INTERIOR DIMENSIONS (inches)				
Head room (front driver side)	39.2	39.2	39.2	39.2
Head room (front passenger side)	39.0	39.0	39.0	39.0
Head room (rear driver side)	37.8	37.8	N.A.	N.A.
Head room (rear passenger side)	41.5	41.5	41.5	41.5
Leg room (front driver side)	32.8	32.8	32.8	32.8
Leg room (rear)	34.3	34.3	N.A.	N.A.
AXLE RATIOS				
Front	4.300:1	4.100:1	4.300:1 ¹	4.100:1
Rear	4.300:1	4.300:1	4.300:1 ¹	4.300:1
2-SPEED TRANSFER CASE				
Gear ratios	High 1.000 Low 2.659	High 1.000 Low 2.276	High 1.000 Low 2.276 ²	High 1.000 Low 2.276
GROUND CLEARANCE				
Angle of approach (degrees)	37	37	37	37
Angle of departure (degrees)	22.5	22.5	22.5	22.5
Differential system to ground (inches)	7.7	7.7	7.7	7.7
Running ground clearance (inches)	10.6	10.6	10.6	10.6
CAPACITIES				
Gross vehicle weight (lbs.)	5580	5180	5080	5180
Cargo load (lbs.)	308	300	700	700
Cargo volume (cu. ft.)	89.9	86.8	80.9	80.9
Fuel tank capacity (gallons)	17.2	17.2	17.2	17.2
TIRES				
Type	All-Weather	Steel-Belted Radial	Solid Metallic ³	Top White
Size	P225/75R15	P225/75R15	Canvas Red (Red)	White
			Brown (Brown)	Black
			Silver (Silver)	Black
			Dark Gray (Gray)	Black
			Light Blue (Gray)	White
EXTERIOR COLORS ⁴ (INTERIOR COLORS)				
	Solid White (Gray or Red)	Top Light Bronze (Orange)	Solid Metallic ³	Top White
	Red	Canvas Red (Red)	Canvas Red (Red)	White
	Black	Black	Brown (Brown)	Black
			Silver (Silver)	Black
			Dark Gray (Gray)	Black
			Light Blue (Gray)	White
MILEAGE ESTIMATES ⁵				
	Turbo ECT	5-Speed Manual	ECT	4-Speed Automatic
Estimated city MPG	21	23	21	22
Estimated highway MPG	27	29	27	27

N.A. - Not Applicable. ¹Models with ECT-4-speed auto; are 4.300:1. ²Models with ECT-4-speed auto are 2.659. ³Not all colors available in all models. ⁴Optional. ⁵1997 preliminary mileage figures determined by Toyota 1997 EPA mileage estimates not available at time of printing. See your Toyota dealer for details. ⁶Toyota 4x4 vehicles are designed to meet off-road driving requirements. Abusive use may result in bodily harm or damage. We encourage responsible operation to protect you, your vehicle and the environment. Sport/light bar not intended for occupant safety. Specifications and equipment based on information available at time of printing and subject to change without notice. Some vehicles shown with optional equipment. See Features chart. For details on 1997 options, accessories and specifications in your area, contact your Toyota dealer.

OPTIONS

POWER PACKAGE
4Runner SRS offers a Power Package that includes power windows/door locks, power antenna, power remote mirrors, courtesy light group and trouble light.

POWER WINDOWS AND DOOR LOCKS

CRUISE CONTROL

AIR CONDITIONING

MOTION SENSOR

ALARM

INTRUSION MONITORING SYSTEM

SUN/MOONROOF WITH SHADE

ALUMINUM ALLOY WHEELS

CHROME PACKAGE
Add even more style to your 4Runner with the Chrome Package: chrome front and rear bumpers, chrome trim, grille and chrome wheels. Aluminum alloy wheels are also available.

COLOR-KEYED CARPETED FLOOR MATS

MORE SECURITY
Intrusion Monitoring System helps guard against theft and forced entry. It features an Electronic Motion Sensor, convenient built-in on/off switch and ignition key control.

THE TOYOTA TOUCH

The Toyota Touch is our commitment to give you more satisfaction and to design and produce the best trucks in the industry. It means we're looking out for you. And it means the extra effort that is the Toyota Touch is evident every step of the way.

Results of the Toyota Touch have been measured by a national independent survey. Toyota Truck owners are more satisfied with their vehicles than owners of any other make of compact truck, and are more likely to stay Toyota owners.⁶

Toyota provides a 1-year/12,500-mile basic new vehicle limited warranty and a limited powertrain warranty of 3 years/36,000 miles. Electronic and computerized components on Toyota vehicles have a 3-year/36,000-mile limited warranty. Emission-control devices have a 5-year/50,000-mile warranty, and there is a 5-year/unlimited-mileage corrosion perforation warranty.⁷

Toyota is a leader in automotive design and technology. Only Toyota offers a gas-turbo truck in direct response to your need for exceptional durability, economy and responsive performance in a quality truck.

The Toyota Touch is our way of doing business with you.

Get More From Life... Buckle Up!
*J.D. Power & Associates 1998 Compact Truck CSI.
⁶See your Toyota dealer for warranty details.