

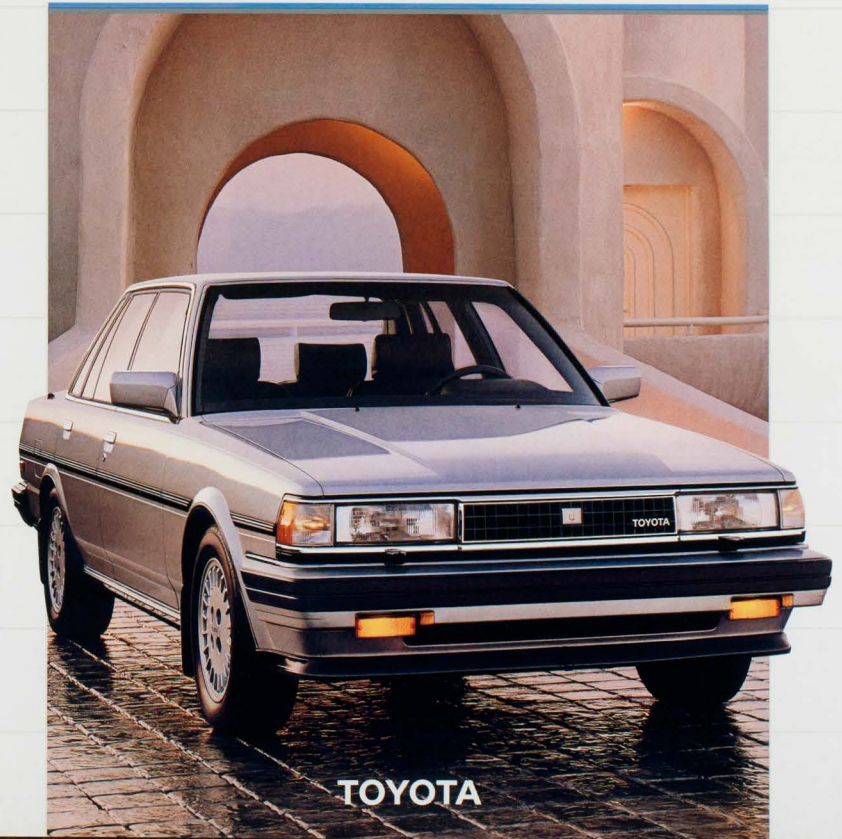
WHO  
COULD ASK  
FOR ANYTHING  
MORE! **TOYOTA**



PCT4008 48/964 00000-01001  
Listed in U.S.A. 1400MM  
© 1986 Toyota Motor Sales, U.S.A., Inc.

1 9 8 7

# CRESSIDA



**TOYOTA**





LUXURY SEDAN

## ELEGANCE

## SOLID LUXURY

The 1987 Cressida offers everything you want in a luxury car and more: a combination of sophisticated elegance and spirited performance. Toyota craftsmanship makes Cressida one of the most trouble-free new cars sold in its class.\*

Cressida's responsive 2.8 liter 6-cylinder twin cam electronically fuel-injected engine gives a smooth, strong 156 hp, more power than many higher-priced luxury sedans.

An electronically controlled 4-speed automatic overdrive transmission with shift pattern selector and lock-up torque converter enables you to select two different driving modes, depending on your individual driving needs. Steering feel, delivered through speed sensing power steering, has been optimized for precise, easy control.

## SUPERB CONTROL

In the tradition of the finest sedans, Cressida rides on an advanced 4-wheel independent suspension system for superb handling and ride comfort. Power-assisted ventilated 4-wheel disc brakes help provide control.

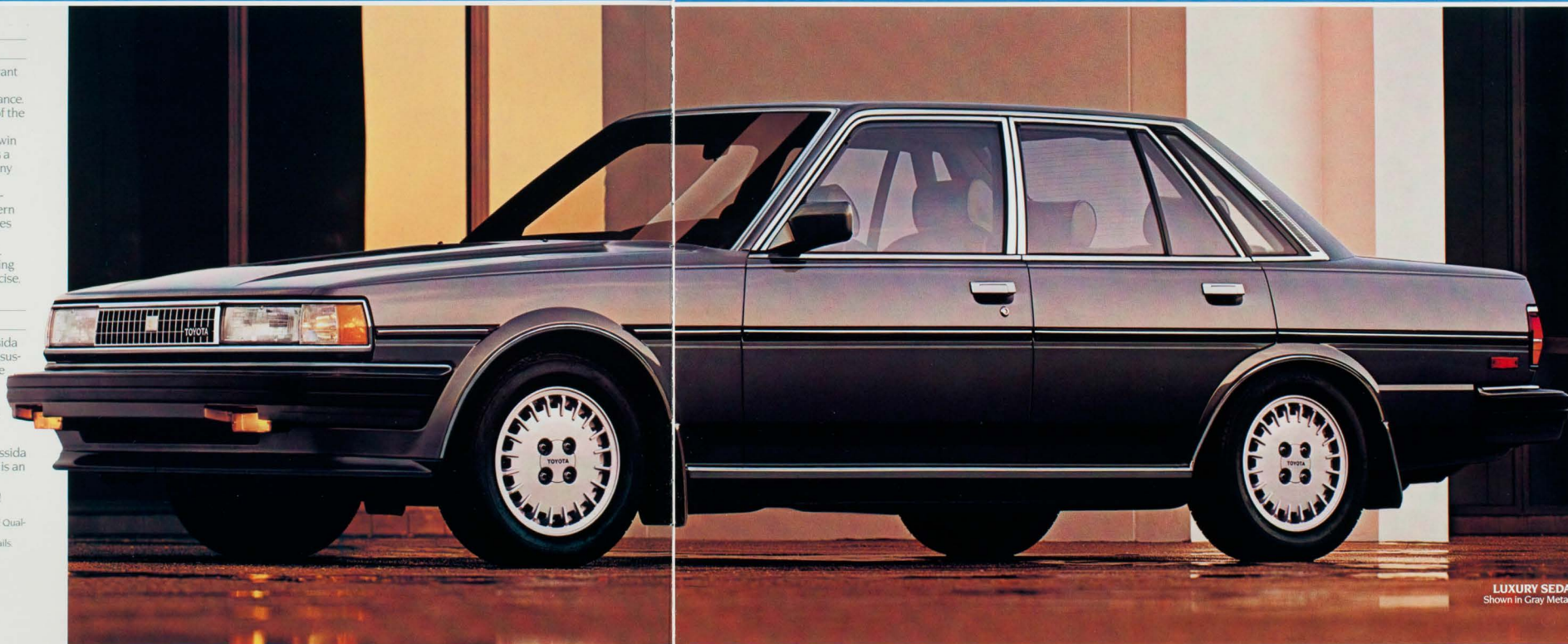
Carefully molded to shape, finely finished, richly appointed—Cressida for 1987 sets its own standard of impeccably tasteful style.

For 1987 you can choose between the Cressida Luxury Sedan or Wagon. Driving a Cressida is an unforgettable experience of luxury.

## WHO COULD ASK FOR ANYTHING MORE!

\*Based on problems encountered in first 90 days of ownership—1985 J.D. Power & Associates New Car Initial Quality Survey.

Shown with optional equipment. See page 10 for details.

LUXURY SEDAN  
Shown in Gray Metallic



FULL INSTRUMENTATION

## LUXURY

Cressida invites you inside with its own special luxury. Fine craftsmanship surrounds you in deeply cushioned comfort. The optional glove-soft leather, shown here, or rich, fine fabrics are all beautifully color-coordinated.

Cressida's standard cloth Sport Seats include a 7-way adjustable driver's seat. You can choose the optional pillowed Luxury Seat Package in rich velour or soft leather. For even greater comfort, a new Power Seat Package provides power adjustments for fore/aft, recline, 2-way seat cushion and lumbar support.

## ELEGANT APPOINTMENTS

New for 1987 is an advanced sound system by Technics\* with integral cassette player and acoustic flavor/tone control equalizer with preset equalization for optimum reproduction of your favorite music. A diversity-type power antenna selects between the rod-type and window antennas to deliver the strongest signal possible.

Cressida's instrumentation, analog or optional electronic display, offers superior readability. Satellite Control Switch Groups, at both sides of the steering wheel, give easy fingertip control of operating functions, including soft-touch automatic temperature control air conditioning.

Automatic on/off headlamp system means not having to remember to turn off the headlamps, and the time-delay feature provides headlamp illumination as you walk from the car.

For 1987, Cressida means more of everything. Sumptuous luxury. Exquisite comfort. A wonder of convenience. It's the fine luxury automobile at its best.

\*Technics is a trademark of the Matsushita Electric Industrial Co., Ltd.

Shown with optional equipment. See page 10 for details.

## SUMPTUOUS

LUXURY SEDAN LEATHER INTERIOR  
Shown in Gray





## PRESTIGE

## VERSATILE LUXURY

The Cressida Luxury Wagon is a prestigious blend of station wagon versatility with first-class luxury for five passengers.

Its smooth exterior shape is aerodynamically efficient, yet its spacious interior offers over 70 cu. ft. of fully-carpeted cargo space with the rear seat folded down. The wide and high-opening rear door, matched to an exceptionally low-liftover height, provides the utmost ease in loading the Luxury Wagon to its maximum capacity.

For peace-of-mind, an automatically activated Theft Deterrent System helps protect both your Luxury Wagon and your belongings.

## POWER TO MOVE

The Luxury Wagon is powered by Toyota's strong, responsive 2.8 liter 6-cylinder twin cam electronically fuel-injected engine that gives reassuring performance—and relaxed cruising. You can even tow up to 2000 lbs. Cressida's tuned suspension, combined with speed sensing power rack-and-pinion steering gives precise feel and control.

Inside the Luxury Wagon are all the convenient and elegant features you've come to expect of a Cressida: luxurious 5-passenger interior with beautiful appointments, careful detailing and carefully selected materials that are Cressida's hallmark.

It's all here, combined in one, unique automotive experience: performance, luxury, versatility. The Cressida Luxury Wagon is a reassuring choice when you want to combine luxury and function.



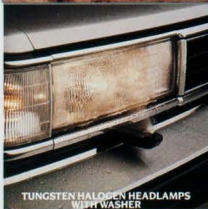
LUXURY WAGON  
Shown in Light Blue Metallic



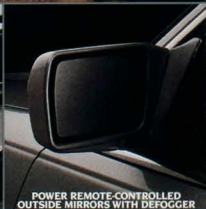
EXTRAORDINARY



LUXURY SEDAN WITH SPORTS PACKAGE  
Shown in Silver Metallic



TUNGSTEN HALOGEN HEADLAMPS  
WITH WASHER



POWER REMOTE-CONTROLLED  
OUTSIDE MIRRORS WITH DEFOGGER



STANDARD INTERIOR  
Shown in Maroon Cloth



SATELLITE CONTROL SWITCH GROUP (AUDIO/AIR CONTROLS)



MEMORY-TYPE  
TILT STEERING WHEEL



ELECTRONIC AM STEREO/FM/MPX TUNER, CASSETTE  
AND ACOUSTIC FLAVOR/TONE CONTROL EQUALIZER



COLUMN-MOUNTED CRUISE CONTROL



DUAL LIGHTED VANITY MIRRORS



AUTOMATIC SHOULDER BELTS



7-WAY POWER DRIVER'S SEAT



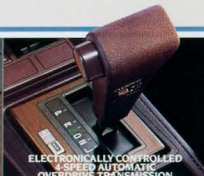
'CLASSICAL'—EQUALIZER SETTING

AT-HAND COMMAND  
Standard features include: automatic temperature control, Satellite Control Switch Group, Technics tuner system. Optional: Power and Luxury Leather Seat Packages.

For further information on features and options, see page 10.



TRANSMISSION MODE SELECTOR



ELECTRONICALLY CONTROLLED  
4-SPEED AUTOMATIC  
OVERDRIVE TRANSMISSION

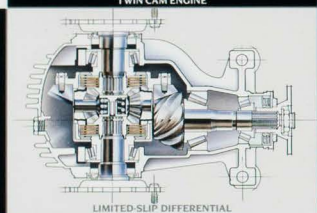


TWIN CAM ENGINE

ADVANCED DESIGN  
Sophisticated engineering has produced Cressidas spirited, 2.8 liter 6-cylinder twin cam electronically fuel-injected engine. Cressida sedans offer either a 5-speed manual overdrive transmission or efficient electronically controlled 4-speed automatic overdrive transmission.



5-SPEED MANUAL  
OVERDRIVE TRANSMISSION



LIMITED-SLIP DIFFERENTIAL

SPORTS PACKAGE  
The Sports Package is standard with the 5-speed manual overdrive transmission and is optional with the 4-speed automatic overdrive transmission. It includes TEMS, limited-slip differential, headlamp washers and a trim package, which includes blackout trim, grille and taillights for that Euro-style look.



TEMS CONTROLS

TEMS HANDLING  
Toyota Electronic Modulated Suspension (TEMS) provides computer control of the shock absorbers. A 2-mode switch lets you select Cressida's handling characteristics to fit the driving conditions.





	4-Door Luxury Sedan Auto.	4-Door Luxury Sedan 5-Speed	5-Door Luxury Wagon Auto.
S—Standard O—Optional —Not Available			
<b>PERFORMANCE</b>			
2.8 liter 6-cylinder twin cam engine	S	S	S
Electronic fuel injection	S	S	S
Electronically controlled 4-speed automatic overdrive transmission with shift pattern selector and lock-up torque converter	S	—	S
5-speed manual overdrive transmission	—	S	—
MacPherson strut front suspension	S	S	S
Independent rear suspension with gas-filled shock absorbers	S	S	—
4-link rear suspension with stabilizer bar	—	—	S
Power-assisted ventilated 4-wheel disc brakes	S	S	S <sup>1</sup>
205/60R15 speed-rated steel-belted radial tires	S	S	S <sup>2</sup>
Full-size spare tire with steel wheel	S	S	S
High center-mount rear stoplight	S	S	S
<b>STYLING/DESIGN</b>			
15" x 6" aluminum alloy wheels	S	S	S <sup>1</sup>
Color-keyed front/rear bumpers and front/rear mudguards	S	S	S <sup>1</sup>
Euro-styled tungsten halogen headlamps	S	S	S
Dual power remote-controlled mirrors with defogger and wide-view passenger-side convex mirror	S	S	S
Theft Deterrent System	S	S	S
Wide protective side moldings	S	S	S
Stainless steel "lived-in-basket" roof rack	—	—	O
Twin rear window wiper/washer	—	—	S
Two-tone paint	O	O	—
<b>COMFORTS AND CONVENIENCES</b>			
Tachometer, coolant temperature gauges and resettable tripmeter	S	S	S
Electronic Display Instrument Panel—includes digital speedometer, graphic electronic tachometer, fuel and temperature level indicators	O	—	—
Trip Computer/Service Reminder	O	O	O
Speed sensing power rack-and-pinion steering	S	S	S
Leather-wrapped 2-spoke steering wheel and parking brake lever	S	S <sup>1</sup>	S
Memory-type tilt steering wheel	S	S	S
Cruise control	S	S	S
Satellite Switch Group/Left—includes outside power mirrors, outside mirror defogger and hazard warning controls	S	S	S
Satellite Switch Group/Right—includes automatic air conditioning and key audio controls	S	S	S
Illuminated dual visor vanity mirrors	S	S	S
Digital quartz clock	S	S	S
Power windows and centrally controlled power door locks	S	S	S <sup>1</sup>
Automatic shoulder belt system	S	S	S
Soft-touch automatic temperature control air conditioning	S	S	S
Locking fuel filler door with remote release and remote trunk release	S	S	S <sup>2</sup>
Reclining low-back front bucket seats with 7-way adjustable driver's seat and 2-way adjustable headrests	S	S	S
Luxury velour cloth Sport Seats	S	S	S
Full console with storage area and padded armrest	S	S	S
Cut-pile carpeting and fully carpeted trunk/cargo area with trunk lid liner	S	S	S
Luxury carpeted floor mats with stitched Cressida logo	O	O	O
Automatic-off headlamp system with variable time delay	S	S	S
Automatic illuminated entry/fade-out system	S	S	S
Electric rear window defogger	S	S	S
Flush-mounted tinted glass with upper shaded windshield band	S <sup>1</sup>	S <sup>1</sup>	S
One-touch tilt-and-slide power sunroof with dual maplights	O	O	—
Electronic Technics AM stereo/FM/MPX tuner with 4 speakers, auto-reverse/full-logic cassette, amplifier and 5-way acoustic flavor/tonal control equalizer	S	S	S
Automatic diversity-type power antenna	S	S	S
<b>PACKAGES</b>			
Sports Package—includes limited-slip differential, Toyota Electronic Modulated Suspension System (ITEMS), headlamp washers, blackout trim, black sport grille and sport taillights	O	S	—
Luxury Seat Package: Power Seat Package—includes luxury velour pillow seats, cloth door trim, 3-setting memory seat adjustments, power, fore/aft, 2-way bottom cushion tilt, recline, and driver-side lumbar	O <sup>1</sup>	O <sup>1</sup>	—
Luxury Leather Seat Trim Package—includes luxury leather pillow seats and leather coordinated door trim	O	O	—

	4-Door Luxury Sedan Automatic	4-Door Luxury Sedan 5-Speed	5-Door Luxury Wagon Automatic
<b>BODY/FRAME CONSTRUCTION</b>			
	Unitized body		
<b>STEERING TYPE</b>			
	Speed sensing power rack-and-pinion, collapsible shaft		
<b>BRAKES, SEDAN BRAKES, WAGON</b>			
	Power-assisted (ventilated 4-wheel disc) Power-assisted (ventilated front disc/rear drum)		
<b>SUSPENSION FRONT SUSPENSION REAR (SEDAN)</b>			
	MacPherson strut, coil springs and stabilizer bar Semi-trailing arm independent rear suspension, coil springs, gas-filled shock absorbers and stabilizer bar		
<b>SUSPENSION REAR (WAGON)</b>			
	4-link with coil springs, lateral tracking bar and stabilizer bar		
<b>ENGINE TYPE</b>			
	6-cylinder twin cam EFI 2.8 liters (2759cc)		
<b>DISPLACEMENT</b>			
	156 @ 5200 rpm		
<b>HORSEPOWER (SAE NET) TORQUE (SAE NET)</b>			
	165 ft-lbs @ 4500 rpm		
<b>EXTERIOR DIMENSIONS (inches)</b>			
Wheelbase	104.5	104.5	104.5
Overall length	187.8	187.8	189.6
Overall width	66.5	66.5	66.5
Overall height	54.1	54.1	55.7
<b>INTERIOR DIMENSIONS (inches)</b> (Without second)			
Head room (front)	38.8	38.8	38.8
(rear)	37.6	37.6	38.1
Leg room (front)	42.0	42.0	42.0
(rear)	35.2	35.2	33.9
Shoulder room (front)	55.0	55.0	55.0
(rear)	54.7	54.7	54.7
<b>CAPACITIES</b>			
Cargo capacity (rear seat down (cu. ft.))	N.A.	N.A.	70.2
Luggage capacity (cu. ft.)	12.9	12.9	35.4
Fuel tank capacity (gallons)	18.5	18.5	18.2
<b>CURB WEIGHT (lbs.)</b>			
	3328	3296	3240
<b>TIRES</b>			
Type	Speed-Rated Steel-Belted Radial Blackwall	Speed-Rated Steel-Belted Radial Blackwall	Steel-Belted Radial Blackwall
Size	205/60R15	205/60R15	195/70R14
<b>EXTERIOR COLORS<sup>1</sup> (INTERIOR COLORS)</b>			
	Solid Super White (Maroon or Blue)	Metallic Clear Coat Solid Silver (Gray or Blue) Gray (Maroon) Beige (Beige) Brown (Beige) Light Blue (Gray or Blue) Black (Maroon or Beige)	Optional Two-Tone Charcoal/Gray (Gray)
	Pearl Dark Red Pearl (Maroon) Dark Blue Pearl (Gray or Blue)		
<b>MILEAGE ESTIMATES<sup>2</sup></b>			
Estimated city/MPG/ Estimated highway/MPG	ECT 4-Speed Automatic Overdrive 18/24	5-Speed Manual Overdrive 19/24	ECT 4-Speed Automatic Overdrive 18/24
N.A.—Not applicable. <sup>1</sup> Not all colors available in all models. <sup>2</sup> 1987 preliminary mileage figures determined by Toyota. 1987 EPA mileage estimates not available at time of printing. See your Toyota dealer for details. Specifications and equipment based on information available at time of printing and subject to change without notice. Some vehicles shown with optional equipment; see Features chart. For details on 1987 options, accessories and specifications in your area, contact your Toyota dealer.			

## OPTIONS



LUXURY SEDAN TWO-TONE PAINT  
Shown in Charcoal/Gray Metallic



INSTRUMENTATION  
Electronic Display has speedometer and automatic transmission indicator. Trip Computer/Service Reminder checks engine operation.



LUXURY LEATHER SEAT TRIM PACKAGE

The Luxury Leather Seat Trim Package (Sedan only) includes supple leather pillow seats and leather coordinated door trim. Team that with the Power Seat Package and you have a pillowed leather seat which reclines and power-adjusts for remarkable comfort.



EXTRA TOUCHES  
A sturdy roof rack adds even more cargo-carrying capacity to Cressida's 70.2 cu. ft. cargo area. Plenty of room on top for packages you hadn't expected to carry, and ample tie-down rails to help keep your cargo securely in place.

## THE TOYOTA TOUCH

The Toyota Touch is our commitment to give you more satisfaction and to produce better vehicles than any other manufacturer. The extra effort that is the Toyota Touch is evident every step of the way.

The Toyota Touch can be measured in surveys that include customers of other manufacturers. In such surveys, Toyota has distinguished itself as the #1 most trouble-free new car. And the #2... #3 and #4. In fact, six of the top ten most trouble-free new cars sold in America were Toyotas!

Toyota provides a 1-year/12,500-mile basic new vehicle limited warranty and a limited powertrain warranty of 3 years/36,000 miles. Electronic and computerized components have a 3-year/36,000-mile limited warranty. Emission-control devices have a 5-year/50,000-mile warranty, and there is a 5-year/unlimited-mileage corrosion perforation warranty\*\*

Toyota is a leader in automotive design and technology. For example, Toyota is the largest producer of vehicles powered by electronically fuel-injected, multiple-valve twin cam engines in direct response to your need for exceptional efficiency, economy and performance.

The Toyota Touch is our way of doing business with you.

Get More From Life... Buckle Up!  
\*Based on problems encountered in first 90 days of ownership—1985 J.D. Power & Associates New Car Initial Quality Survey.  
\*\*See your Toyota dealer for warranty details.