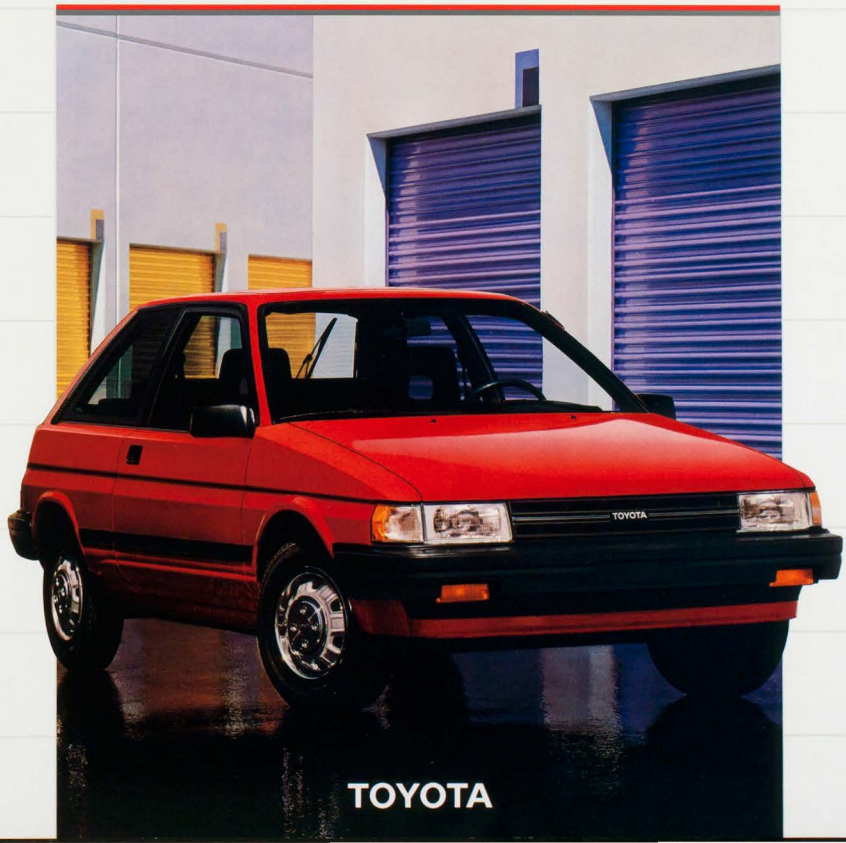


WHO  
COULD ASK  
FOR ANYTHING  
MORE! **TOYOTA**



1 9 8 7  
**TERCEL**



PROPERTY OF PRODUCT  
PLANNING DEPARTMENT

PCT401 (8-86) 00600-0908  
Litho in U.S.A. 400M  
© 1986 Toyota Motor Sales, U.S.A., Inc.

**TOYOTA**



## DASHING!



3-DOOR DELUXE LIFTBACK  
Shown in Light Blue Metallic

## CELEBRATE ECONOMY

The all-new Tercel, with its modern streamlined shape, new multi-valve engine and soft-touch interior, is an economy car that's easy to own. This Tercel is built to continue the tradition that made Tercel the most trouble-free new car in its class.\*

Tercel Liftback's great styling provides plenty of interior room and convenience. A large glass area gives a spacious feeling and improved visibility. There's ample room for five and all the gear you need to carry. Driving is quiet and the flush exterior surface helps reduce wind noise.

The bright new interior features a wide, low dashboard, see-through front seat headrests and generously padded soft-touch seats. Toyota's typical attention to detail makes Tercel much more than an economy car.

## CELEBRATE PERFORMANCE

The front-wheel drive Tercel has a new multi-valve 1.5 liter engine. It's the latest example of Toyota's mastery of the high-tech, multi-valve engine: 26% more power than ever and improved efficiency.

Choose the new 3-Door Liftback, 3-Door Deluxe Liftback or 5-Door Deluxe Liftback. Or choose either the 2-wheel or 4-wheel drive Tercel Wagons. The all-new Tercel gives you Toyota reliability and quality in a stylish package that's easy to own and afford.

## WHO COULD ASK FOR ANYTHING MORE!

\*Based on problems encountered in first 90 days of ownership—1985 J.D. Power & Associates New Car Initial Quality Survey.  
Shown with optional equipment. See page 14 for details.





SPLIT REAR SEATBACKS

## RUNABOUT

### 5-DOOR RUNABOUT

Depend on the all-new Tercel to help you breeze through the day. Whether commuting or vacationing, you'll appreciate the Tercel 5-Door Deluxe Liftback with comfortable room for five, plus the convenience of four doors and easy liftback access to 37.8 cu. ft. of cargo area with the rear seatbacks folded down.

But the Tercel 5-Door is not just practical. With its responsive 1.5 liter multi-valve engine and smooth-shifting 3-speed automatic transmission, the front-wheel drive 5-Door Deluxe Liftback holds down operating expenses and is fun to drive.

### FRESH STYLING

The all-new shape of the 5-Door Deluxe Liftback is purposeful and efficient, whether you're considering aerodynamics or interior room. Tercel's sleek, flush-fitting halogen headlamps and a clean, well-styled design make the 5-Door Deluxe Liftback distinctive. Tercel's interior seats five and is quiet and comfortable, thanks to features like hi-back front bucket seats, complete carpeting, and quality interior materials. Standard features include the combination cup holder/coin tray. And, there's even an optional Convenience Package, which includes an attractive cloth interior, locking cargo cover and fold-down split rear seatbacks that let you carry long parcels and still have rear-seat passenger room.

Tercel provides 5-door style and comfort at an affordable price.

Shown with optional equipment. See page 14 for details.



5-DOOR DELUXE LIFTBACK  
Shown in White





FULL INSTRUMENTATION

#### ROOM AND CONVENIENCE

You get lots of space and convenience for five in the interior of the new Tercel. Its interior is designed to be attractive and durable, while providing plenty of usable space.

A low hood line and instrument panel combine with large windows all around to give the new Tercel Liftback an open, airy feeling. High-quality seat and soft-touch trim materials are used throughout the interior to create a warm environment that's both soothing and relaxing.

#### PLEASANT SURPRISES

Look around Tercel's new interior and you'll discover some pleasant surprises. There's a new dash with large analog instruments for easy reading. Fully reclining, form-fitting front bucket seats have see-through headrests for style and improved visibility. The standard seats are covered with attractive, durable vinyl. Full carpeting is a standard feature of all Terceles. Warm-textured cloth fabric seats are available separately or are included in the optional Convenience Package. It also includes an analog quartz clock, dual remote-controlled mirrors, intermittent windshield wipers/washers, tilt steering wheel, remote releases, a locking rear deck cargo cover and fold-down split rear seatbacks that are handy for carrying long parcels.

Attention to detail has resulted in many standard features, such as storage pockets in the doors and a recessed tray integrated into the dashboard. Optional features include electronic AM stereo/FM/MPX tuner with cassette, cruise control, air conditioning, a sunroof and more.

Shown with optional equipment. See page 14 for details.

## COMFORTABLE



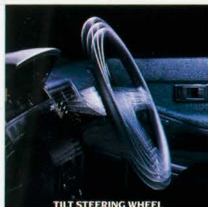
DELUXE CONVENIENCE PACKAGE INTERIOR  
Shown in Blue Cloth



## CONTEMPORARY

## SURPRISING CONVENIENCES

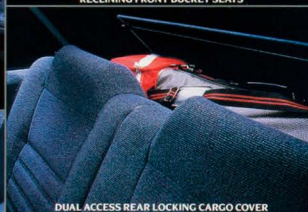
*Tercel's Convenience Package includes many desirable options: cloth interior, tilt steering wheel, fold-down split seatbacks, cargo cover and remote releases.*



TILT STEERING WHEEL



RECLINING FRONT BUCKET SEATS



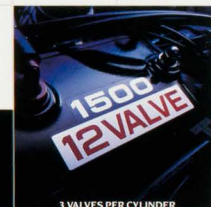
DUAL ACCESS REAR LOCKING CARGO COVER

3-DOOR DELUXE LIFTBACK  
Shown in Blue Metallic

1.5 LITER 12-VALVE ENGINE

## ECONOMY AND POWER

*Tercel's 12-valve engine is the latest example of Toyota's commitment to multi-valve technology. Two intake valves and one exhaust valve per cylinder help create high power output and improve engine efficiency for more responsive performance.*



3 VALVES PER CYLINDER

## NEW TECHNOLOGY

*Smooth lines and careful attention to aerodynamic details help improve Tercel's economy.*

*For further information on features and options, see page 14.*



AERODYNAMIC STYLING



HALOGEN HEADLAMPS

## THOUGHTFUL DETAILS

*Tercel has thoughtful touches wherever you look. Maps and other items have handy storage in both door pockets. Stalk-mounted cruise control is an option, and a dash-mounted cup holder is standard.*

DUAL MAP POCKETS



REMOTE RELEASES



CRUISE CONTROL

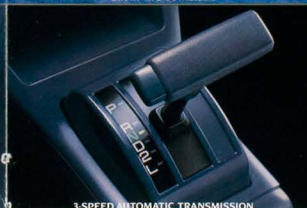
CUP HOLDER



ELECTRONIC AM STEREO/FM/MPX TUNER WITH CASSETTE

## STYLE AND COMFORT

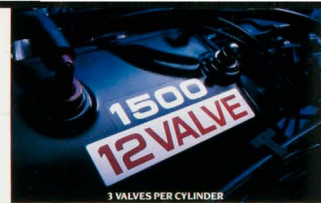
*For pure pleasure, Tercel offers soft-touch AM stereo/FM/MPX tuners with electronic tuning. For total sound control and dynamic range, an electronic tuner with cassette deck is also available.*



3-SPEED AUTOMATIC TRANSMISSION

5-SPEED MANUAL  
OVERDRIVE TRANSMISSION





## DELIGHTFUL

### VALUE-PACKED ECONOMY

Tercel 3-Door Liftback is Toyota's most economical car. A low purchase price and traditional Toyota durability and efficiency combine to provide savings you can really take to the bank.

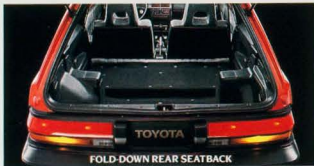
Its many standard features make driving a Tercel as enjoyable as owning one. Its performance is a surprising pleasure for an economy car. The all-new 1.5 liter SOHC 12-valve engine has improved efficiency for 1987. It's matched with a smooth-shifting 4-speed manual transmission to make the most of a gallon of gas.\* In fact, the 3-Door Liftback delivers the highest miles-per-gallon rating of any Toyota. Yet it comes through with all the pep and performance you need to make the going great—around town or out on the highway.

M I L E A G E\*

36 CITY MPG  
41 HWY MPG

\*1987 preliminary mileage figures determined by Toyota for Tercel 3-Door Liftback with 4-speed manual transmission. See page 14 for complete information.

With all its economy, the 3-Door Liftback still gives you all the advanced engineering and high-quality features of the Tercel line. There's road-hugging front-wheel drive plus rack-and-pinion steering for quick, responsive handling. Power-assisted front disc/rear drum brakes help provide sure stopping; and an audible alert lets you know if the front brakes need servicing. MacPherson front suspension contributes to Tercel's comfortable ride.



FOLD-DOWN REAR SEATBACK

As with all new Tercels, the 3-Door Liftback sports sleek new aerodynamic lines that are as functional as they are nice looking. Everything on the outside is made to fit flush to hold down wind resistance. Halogen headlamps are integrated into the body lines, and the front end is slanted to cut into the wind. The extensive use of glass on Tercel's new low-profile body not only looks good but allows you better visibility all around. To keep your Tercel in top shape for years to come, its stylish new body is protected from the elements by special rust-resistant steel, sealants and protective coatings.

### ROOM TO SPARE

The 3-Door Liftback's interior is a stylish blend of durable, attractive materials. Its interior is refreshingly quiet, due in part to its soft surfaces and a dash panel that's composed of multiple layers of insulating materials. And there's full carpeting all around to further reduce noise. Careful attention has been given to the seats, which come standard with vinyl upholstery designed to take the toughest treatment. Tercel's front bucket seats have side bolsters for lateral support, while the fully-reclining front seatbacks are ergonomically designed to support the lower back. Even the headrest is open to aid visibility.

When you need extra space, the rear seatback folds down to create a flat, fully carpeted 36.7 cu. ft. cargo area. And like all Tercels, the 3-Door Liftback features a wide, high-opening rear hatch for easier loading of heavy or awkward objects.

Every inch of this Tercel is space-efficient, too. There's additional storage space in both doors, where map pockets are integrated into the soft-touch door panels. A convenient cup and coin holder retracts into the instrument panel. And that's all in addition to the large glove compartment.



3-DOOR LIFTBACK INTERIOR  
Shown in Gray/White

To add to your driving ease, Tercel's instrument panel is skillfully engineered for at-a-glance reading, and all controls are within easy reach.

Comfortable surroundings and thoughtful design make Tercel easy to own and enjoy. But above all, you'll find Toyota quality and reliability. Together, they've made Tercel the most trouble-free new car in its class, import or domestic.\*\*

\*\*Based on problems encountered in first 90 days of ownership—1985 J.D. Power & Associates New Car Initial Quality Survey.

Shown with optional equipment. See page 14 for details.



3-DOOR LIFTBACK  
Shown in Red





4WD SR5 SPORT SEAT INTERIOR  
Shown in Charcoal Cloth

## ADVENTUROUS



4WD SR5 WAGON  
Shown in Silver Metallic/Steel Blue Metallic Two-Tone

### VERSATILE WAGON

The Tercel 4WD SR5 and Deluxe Wagon provide the superior all-weather traction of 4-wheel drive for added get-around versatility. When the weather turns for the worse and the footing becomes slippery, the 4WD Terceles are easily shifted into 4-wheel drive with a flick of the



ON-COMMAND 4WD SHIFTER

on-command lever while you're driving. There's also plenty of room for five passengers, who remain cozy and comfortable even when the weather is bad. If extra pulling power is needed—in mud or snow—the unique 6-speed manual overdrive transmission has an extra-low gear, which multiplies the torque of its peppy 1.5 liter SOHC engine for extra-hard work. For cruising, the 6-speed manual overdrive transmission lets the engine run at the optimum speed for fuel efficiency.\* There's also a 3-speed automatic transmission with lock-up torque converter available in the 4WD Deluxe Wagon. For day-to-day driving, the 4WD Wagons are easily shifted to 2-wheel drive.

Tercel 4WD Wagon is available with features like rack-and-pinion steering, power-assisted front disc brakes, and MacPherson strut front



FOLD-DOWN SPLIT REAR SEATBACKS

suspension. So wherever your Tercel Wagon takes you—and whatever the weather—it'll take to the road with smooth, sure, agile handling.

### EVERYDAY UTILITY

The 4-wheel drive SR5 Wagon provides exceptional utility. Spacious, comfortable seating is provided for five adults; the hi-back front bucket Sport Seats recline fully; and cargo carrying is made easier with fold-down split rear seatbacks. With both seatbacks folded down, there is 59.8 cubic feet of space in the rear of the 4WD SR5 Wagon. And a wide rear hatch with low-liftover height allows easy cargo loading.

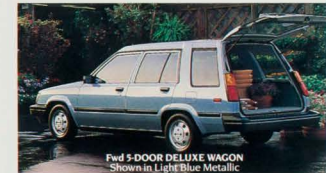
The 4WD SR5 Wagon comes standard with an AM stereo/FM/MPX tuner, rear deck cargo cover for keeping valuables out of sight and a compartment light for easy night loading. To expand your storage room, all Wagon models offer an optional multi-purpose roof rack that adjusts to carry bikes, skis, and most any shape luggage.

### OUTSTANDING COMFORTS

Tough outside, the Tercel 4WD Wagon is refined and civilized inside. SR5 interiors have cloth upholstery with accented vinyl in the Deluxe. Both have full carpeting throughout and the list of standard features includes a tilt

steering wheel, tinted glass and electric rear window defogger.

A number of options are available to add that finishing touch, including dual-stage air condi-



Fold 5-DOOR DELUXE WAGON  
Shown in Light Blue Metallic

tioning, variable assist power steering and power sunroof. You'll even have your choice of several sound systems, including an electronic AM stereo/FM/MPX tuner with four speakers and auto-reverse cassette.

The front-wheel drive 5-Door Deluxe Wagon is similar to its 4-wheel drive counterpart, except that it has even more cargo space, with 63.8 cubic feet of volume when the split rear seatbacks are folded down. It's standard-equipped with a 5-speed manual overdrive transmission and offers an optional 3-speed automatic transmission.

With their unmistakable profile, crisp contemporary styling, exceptional economy, and first-class accommodations, the Tercel Wagons lead the pack.

\*See mileage statement on page 14 for details. Shown with optional equipment. See page 14 for details.





	FRONT-WHEEL DRIVE			4-WHEEL DRIVE		
	3-Door Deluxe Liftback	5-Door Deluxe Liftback	3-Door Liftback	5-Door Deluxe Wagon	5-Door SRS Wagon	5-Door Deluxe Wagon
5-Standard O-Optional -Not Available						
<b>PERFORMANCE</b>						
15 liter 4-cylinder SOHC 12-valve engine	S	S	S	-	-	-
15 liter 4-cylinder SOHC engine	-	-	-	S	S	S
6-speed manual overdrive transmission	-	-	-	-	S	S
3-speed manual overdrive transmission	S	-	-	-	-	-
3-speed manual transmission	-	-	S	-	-	-
3-speed automatic transmission	O	S	-	O	-	O
Rack-and-pinion steering	S	S	S	S	S	S
MacPherson strut front suspension	S	S	S	S	S	S
Power-assisted brakes (front disc, rear drum)	S	S	S	S	S	S
High center mount rear seatlight	S	S	S	S	S	S
<b>STYLING DESIGN</b>						
Euro-style tungsten halogen headlamps	S	S	S	S	S	S
Styled steel wheels with chrome caps and steel-belted radial tires	S	S	S <sup>1</sup>	S	S <sup>1</sup>	S <sup>1</sup>
Stainless steel wheel trim rings	O	O	O	O	-	O
Aluminum alloy wheels	-	-	-	O	-	O
Dual sail-mounted remote-controlled outside mirrors	O <sup>1</sup>	O <sup>1</sup>	-	S	S	S
Sail-mounted driver-side outside mirror	S	S	S	-	-	-
Sail-mounted passenger-side outside mirror	O	O	O	-	-	-
Locking fuel filler door	S	S	S	S	S	S
Wide protective side moldings	S	S	-	S	S	S
Front and rear mudguards	-	-	-	-	S	O <sup>1</sup>
Multi-purpose adjustable roof rack	O	O	O	O	O	O
Rear window wiper/washer with mist cycle	O	O	O	O	S	O
Two-tone paint	-	-	-	O	-	O
<b>COMFORTS AND CONVENIENCES</b>						
Tachometer	-	-	-	S	-	-
Resettable tripmeter	S	S	S	S	S	S
Variable assist power steering	O	O	O	O	O	O
Digital quartz clock	O	O	O	O	S	O
Analog quartz clock	O <sup>1</sup>	O <sup>1</sup>	-	-	-	-
Cruise control - includes variable intermittent front wipers/washers	O	O	-	O	O	O
Tilt steering wheel	O <sup>1</sup>	O <sup>1</sup>	-	S	S	S
Passenger-side vanity mirror	S	S	-	S	S	S
Front cup holder	S	S	S	S	-	-
Sports Seats with adjustable headrests and driver's seat vertical height adjustment	-	-	-	-	S	-
Ht-back front bucket seats with set thru headrests and walk-in seat forward device	S	S <sup>1</sup>	S	S <sup>1</sup>	-	S <sup>1</sup>
Vinyl seats with accents	O	O	O	S	-	S
Cloth seat trim	O	O	O	O	S	O
Dual door pockets	S	S	S	S	S	S
Full carpeting	S	S	S	S	S	S
Remote fuel filler door/rear hatch releases	O <sup>1</sup>	O <sup>1</sup>	-	-	S	-
Carpeted or rubber floor mats	O	O	O	O	O	O
Dual-stage air conditioning	O	O	O	O	O	O
Fold-down split rear seatbacks	O <sup>1</sup>	O <sup>1</sup>	-	S	S	S
Fold-down rear seatback	S	S	-	-	-	-
Rear deck cargo cover/cargo compartment light	O <sup>1</sup>	O <sup>1</sup>	-	O	S	O
Power sunroof	O <sup>1</sup>	-	-	O	O	O
Electric rear window defogger	S	S	O	S	S	S
Tinted glass	S	S	-	S	S	S
Electronic AM stereo/FM/MPX tuner with 4 speakers	O <sup>1</sup>	O <sup>1</sup>	O <sup>1</sup>	O	S	O
Electronic AM stereo/FM/MPX tuner with 4 speakers and cassette	O <sup>1</sup>	O <sup>1</sup>	O <sup>1</sup>	O <sup>1</sup>	O <sup>1</sup>	O <sup>1</sup>
Auto-reverse cassette player	O	O	O	O	O	O
Premium auto-reverse full-logic control cassette player	O	O	O	O	O	O
7-band graphic equalizer/amplifier	O	O	O	O	O	O
<b>PACKAGES</b>						
Tire Package - includes 175/70SR13 Mud & Snow steel-belted radial tires, white steel wheels, front and rear mudguards	-	-	-	-	S	O
Convenience Package (with or without cruise control - includes cloth seats, fold-down split rear seatbacks, remote fuel filler door/hatch releases, analog quartz clock, dual remote-controlled mirrors, intermittent windshield wipers/washers, tilt steering wheel, rear deck cargo cover with lock device and rear deck lamp	O	O	O	-	-	-

	FRONT-WHEEL DRIVE				4-WHEEL DRIVE	
	3-Door Deluxe Liftback	5-Door Deluxe Liftback	3-Door Liftback	5-Door Deluxe Wagon	5-Door SRS Wagon	5-Door Deluxe Wagon
<b>BODY/FRAME CONSTRUCTION</b>	Unitized body				Same as front-wheel drive	
<b>STEERING TYPE</b>	Rack-and-pinion, collapsible shaft				Same as front-wheel drive	
<b>BRAKES</b>	Power-assisted front disc with audible alert wear indicators/rear drum				Same as front-wheel drive	
<b>SUSPENSION FRONT</b>	MacPherson strut with stabilizer bar				Same as front-wheel drive	
<b>SUSPENSION REAR</b>	Rear trailing twist beam and gas-filled shock absorbers				4-link with lateral track rod/hydraulic shock absorbers and stabilizer bar	
<b>ENGINE TYPE</b>	4-cylinder SOHC 12-valve				4-cylinder SOHC	
<b>DISPLACEMENT</b>	15 liters (456 cc)				15 liters (452 cc)	
<b>HORSEPOWER (SAE NET)</b>	78 @ 6000 rpm				62 @ 4800 rpm	
<b>TORQUE (SAE NET)</b>	87 ft-lbs @ 4000 rpm				76 ft-lbs @ 2800 rpm	
<b>EXTERIOR DIMENSIONS (inches)</b>						
Wheelbase	93.7	93.7	93.7	95.7	95.7	95.7
Overall length	197.3	197.3	197.3	169.7	169.7	169.7
Overall width	64.0	64.0	64.0	63.6	63.6	63.6
Overall height	52.6	52.8	52.6	57.1	56.1	56.1
Tread width (front)	54.5	54.5	54.5	54.5	54.5	54.5
Tread width (rear)	54.1	54.1	54.1	53.9	53.1	53.1
<b>INTERIOR DIMENSIONS (inches)</b>						
Head room (front)	38.4	38.4	38.4	40.2	40.2	40.2
Head room (rear)	36.6	36.6	36.6	39.8	39.4	39.4
Leg room (front)	40.2	40.2	40.2	42.4	42.4	42.4
Leg room (rear)	32.1	32.1	32.1	31.8	33.9	33.9
Shoulder room (front)	51.6	51.6	51.6	52.8	52.8	52.8
Shoulder room (rear)	50.7	50.7	50.7	52.6	52.6	52.6
<b>CAPACITIES</b>						
Cargo capacity rear seat up (cu. ft.)	13.0	13.0	13.0	32.0	27.0	27.0
Cargo capacity rear seat down (cu. ft.)	36.2	37.8	36.7	63.8	59.8	59.8
Fuel tank capacity (gallons)	11.9	11.9	11.9	13.2	13.2	13.2
<b>CURB WEIGHT (lbs.)</b>						
4-speed manual	N.A.	N.A.	1970	N.A.	N.A.	N.A.
5-speed manual overdrive	1990	N.A.	N.A.	2145	N.A.	N.A.
6-speed manual overdrive	N.A.	N.A.	N.A.	N.A.	2300	2270
3-speed automatic	2040	2075	N.A.	2165	N.A.	2290
<b>TIRES (steel-belted radials)</b>	All-Season Black/wall 155SR13	All-Season Black/wall 155SR13	Black/wall 145/80SR13	Mud & Snow 175/70SR13	Mud & Snow 175/70SR13	Mud & Snow 175/70SR13
Type	Metallic Clear Coat					
<b>EXTERIOR COLORS<sup>1</sup></b>	Metallic Clear Coat					
<b>INTERIOR COLORS</b>	Optional Two-Tone Silver/Steel Blue (Gray)					
	Solid White (Gray)	Solid Silver (Gray)	Beige (Beige)	Brown (Beige)	Wine (Gray)	Steel Blue (Gray) or Blue (Blue or Gray)
	Red (Gray)				Light Blue (Blue or Gray)	
<b>MILEAGE ESTIMATES*</b>	LIFTBACKS		Fwd WAGON		4WD WAGONS	
	5-Spd. Man. Od.	3-Spd. Auto.	3-Spd. Auto.	4-Spd. Auto.	5-Spd. Man. Od.	6-Spd. Man. Od.
Estimated city MPG/	31/38	29/34	29/34	36/41	29/31	26/30
Estimated highway MPG						24/25

\*Not available. N.A. - Not applicable. <sup>1</sup>Not all colors available in all models. <sup>2</sup>1987 preliminary mileage figures determined by Toyota. 1987 EPA mileage estimates not available at time of printing. See your Toyota dealer for details. Specifications and equipment based on information available at time of printing and subject to change without notice. Some vehicles shown with optional equipment, see Features chart. For more details on 1987 options, accessories and specifications in your area, contact your Toyota dealer.

OPTIONS

**CONVENIENCE PACKAGE INTERIOR**

**WAGON ROOF RACK**

**REAR WINDOW WIPER/WASHER**

**CONVENIENCE**  
When you need more room in your Tercel Wagon, a roof rack provides additional carrying capacity. Styrid tie-down loops help secure the load. Cloth interior available in Convenience Package or separately.

**TILT STEERING WHEEL**

**CRUISE CONTROL**

**ANALOG QUARTZ CLOCK**

**MANUAL SLIDING SUNROOF**

**ELECTRONIC AM STEREO/FM/MPX TUNER WITH CASSETTE**

**3-SPEED AUTOMATIC TRANSMISSION**

THE TOYOTA TOUCH

The Toyota Touch is our commitment to give you more satisfaction and to produce better vehicles than any other manufacturer. The extra effort that is the Toyota Touch is evident every step of the way.

The Toyota Touch can be measured in surveys that include customers of other manufacturers. In such surveys, Toyota has distinguished itself as the #1 most trouble-free new car. And the #2... #3 and #4. In fact, six of the top ten most trouble-free new cars sold in America were Toyotas.\*

Toyota provides a 1-year/125,000-mile basic new vehicle limited warranty and a limited powertrain warranty of 3 years/36,000 miles. Electronic and computerized components have a 3-year/36,000-mile limited warranty. Emission-control devices have a 5-year/50,000-mile warranty and there is a 5-year/unlimited-mileage corrosion perforation warranty.\*\*

Toyota is a leader in automotive design and technology. For example, Toyota is the largest producer of vehicles powered by electronically fuel-injected, multiple-valve twin cam engines in direct response to your need for exceptional efficiency, economy and performance.

The Toyota Touch is our way of doing business with you.

Get More From Life... Buckle Up!  
\*Based on problems encountered in first 90 days of ownership - 1985 J.D. Power & Associates New Car Initial Quality Survey  
\*\*See your Toyota dealer for warranty details.