

## THE TOYOTA TOUCH

The Toyota Touch is our effort to make all your experiences with Toyota the very best, before the sale and after. The Toyota Touch means we want to satisfy you.

If you ever have any questions, contact your dealer's Customer Relations Manager. For additional information, call our Customer Assistance Center at 1-800-331-4331 (weekdays, 9 a.m. to 9 p.m. EST).

### WARRANTY INFORMATION

A 36-month/36,000-mile basic new vehicle limited warranty applies to all components other than normal wear and maintenance items. Additional 60-month/limited warranties cover your powertrain (for 60,000 miles) and corrosion perforation (unlimited miles). In addition, there may be times when we will establish a special policy adjustment which will further defray repair costs.

### LIMITED WARRANTY SUMMARY

Comprehensive coverage	36-month or 36,000-mile
Powertrain	60-month or 60,000-mile
Corrosion perforation	60-month and unlimited miles

Get More From Life... Buckle Up!

PCI-022 (11/90) 00616-9100  
Linko in U.S.A. (225M)  
© 1990 Toyota Motor Sales U.S.A., Inc.

'91 PREVIA



TOYOTA  
"I love what you do for me."

TOYOTA





## PERFECTION

'91 PREVIA

3

Step into Previa: it's the perfect choice when you need a balance of modern style, outstanding performance and family utility. You'll discover more room, visibility and convenience than you ever thought possible. Previa's sleek shape, handling and interior design will enlarge your appreciation of just what modern family transportation can be.

Choose either Previa LE or Deluxe with conventional rear-wheel drive or the all-wheel drive All-Trac. Both versions will astonish you with their high performance and deep reserve of engine power available at your command. What's more, Previa's modern mid-engine design gives it a very low center of gravity for car-like maneuverability and stability. And Previa LE offers standard ventilated front and rear disc brakes.

You'll love what Toyota has done with Previa. You'll also love what Toyota's family mover will do for you. It's like nothing you have ever experienced. You may even want to call it perfection.

Previas LE shown in Garnet Red Pearl. Shown with optional equipment.



## LIVING ROOM

Your family has room to room inside the new Previa LE. With surprising interior room, Previa LE is 7-passenger limousine-comfortable with a wide choice of seating

arrangements (see illustration). The split rear seats fold up quickly and easily to convert Previa's large interior into a spacious cargo hauler. The middle bench seat can be

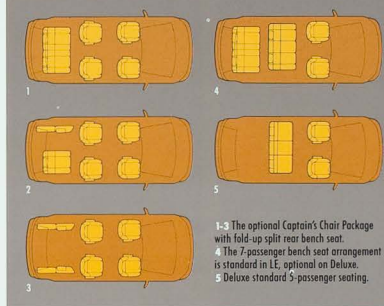
removed for maximum flat-floor cargo capacity.\* Step comfortably between the front and middle seats. Previa LE's spacious environment allows easy access throughout the versatile interior. And optional Captain's Chairs represent the ultimate in middle-seat passenger comfort.

The automatic transmission's column-mounted shifter on Previa LE gives extra room up front, while color-coordinated side panels and

door trim make Previa's living room very attractive, indeed.

Previa LE shown in Beige cloth. Shown with optional equipment.

\*Not applicable with optional Captain's Chairs.



- 1-3 The optional Captain's Chair Package with fold-up split rear bench seat.  
 4 The 7-passenger bench seat arrangement is standard in LE, optional on Deluxe.  
 5 Deluxe standard 5-passenger seating.





## PREVIA LE PANORAMA

Sitting behind Previa LE's 4-spoke wheel, you're surrounded by a panoramic expanse of glass, which helps make maneuvering in traffic more manageable and makes vacation tours truly revealing.

Previas dramatic dash is the ultimate in ergonomic design. It curves deeply behind the tilt steer-

ing wheel to surround you with convenience. Important controls, including the headlamps, windshield wipers, optional cruise control and the automatic transmission shifter are stalk-mounted.

A sculpted center console carries the heating and air conditioning controls as well as the audio controls. For extra comfort, consider

Previas dual air conditioning system: a separate fan system with its own controls lets rear passengers choose their own comfort level. The standard audio system includes a Deluxe ETR Radio with six speakers. A pull-out dual cup holder is located in the central console, as well as a convenient storage compartment.

Switches for optional power windows and remote-controlled outside mirrors are conveniently mounted right on the driver's door. Power door locks are standard on Previa LE and a Theft Deterrent System with a red warning light is optional.

Wherever you look, you'll find Previas panorama of features directed to comfort and convenience.

Shown with optional equipment.





## DRAMATIC

8 Previa Deluxe is filled with the features a growing family needs, at a price a growing family can afford. Its dramatic exterior is styled with flush halogen headlamps and curved glass to make the 1991 Previa the most futuristic shape on the road.

Stylish full wheel covers are standard. Lustrous pearl paints are available, while the body is protected with anti-chip bodyside cladding and extensive rust-resistant measures.

Previas powerful 138-hp 2.4-liter twin-cam EFI engine lies between the front and rear wheels and below the floor where it's completely unobtrusive to interior room. The low-mounted engine helps provide a very low center of gravity, a superb balance of space and performance.

There's plenty of function to Previa's shape: superb visibility and aerodynamics are just part of the story. A long wheelbase provides a more comfortable ride and also allows adequate length to mount the front doors entirely between the wheels. This layout permits easier entry and exiting because the doors are nearer ground level.

Previas convenient, sliding side door gives unobstructed access to a large entry area even in crowded parking lots. And the side door has a child-protector lock for added peace of mind when the family's along.

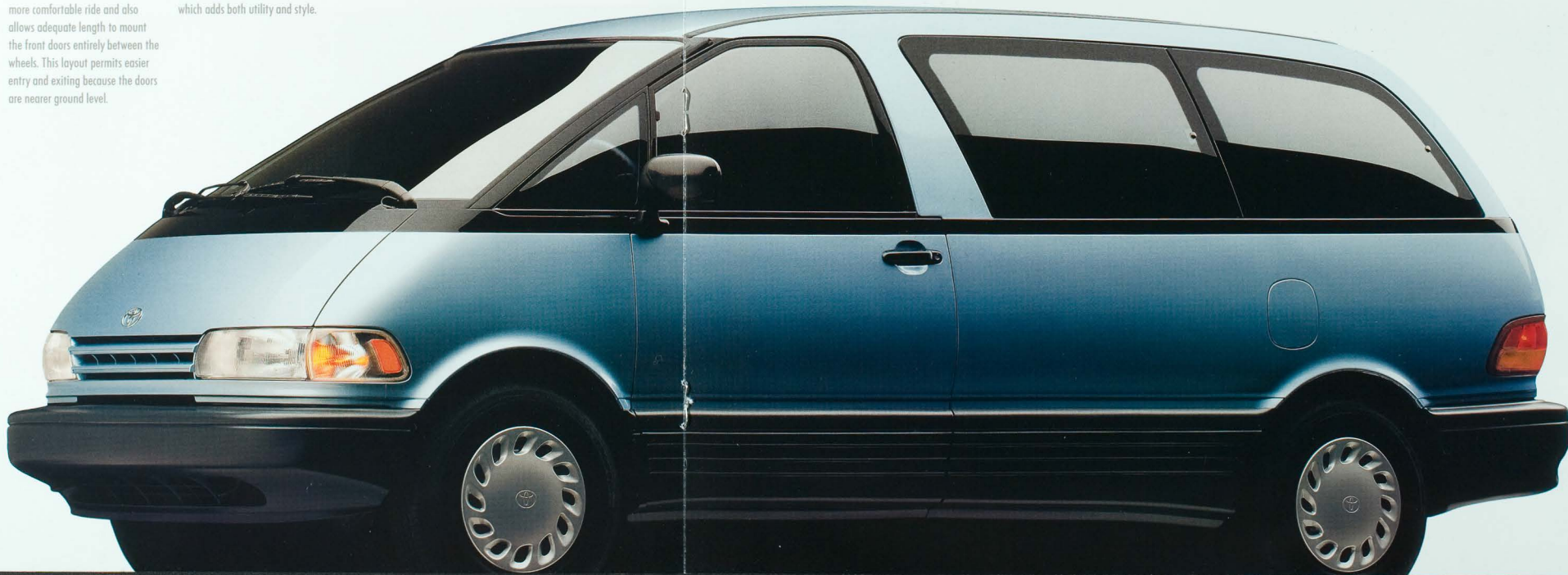
Previas convenient lift-up rear door gives a low liftover height that's a real help, especially when you're loading heavy parcels. And when you have extra cargo, you have the option of a rear roof rack,\* which adds both utility and style.

For busy, growing families with an eye on the future, Previa's the dramatic choice for the nineties.

Previas Deluxe models shown in Ice Blue Pearl and Nautical Blue Metallic.

Shown with optional equipment.

\*Not available with sunroof.







## MASTERFUL

PREVIA ALL-TRAC

Here's a van that has the competence to take you just about anywhere you need to go. All-Trac adds the convenience and superior traction of full-time all-wheel drive to Previa's basic virtues of sleek styling and efficient use of space.

Available in both LE and Deluxe models, All-Trac splits the engine's driving power among all four wheels. As a result, you can drive through snow or rain more confidently, and enjoy superior traction even on dry pavement.

Previas All-Tracs are the choice for families who love to vacation in the snow, or explore the corners of the great outdoors. You'll appreciate All-Trac traction even more if you live where rain and snow are frequent.

Previas. It offers a masterful combination of space efficiency and all-wheel drive performance.

Previas All-Trac LE shown in Silverleaf Metallic. Shown with optional equipment.



## FINE POINTS

Wherever you look in the new Previa, you'll find a panorama of features that characterize Toyota Quality design. Conveniences abound to make your traveling as comfortable and carefree as possible.

**1** The smooth-shifting optional automatic transmission (standard on LE) makes even heavy traffic tolerable. The shift lever is mounted on the steering column for easy access between the seats.

**2** A child-protector door lock on the sliding side door provides added peace of mind when cruising with the family.

**3** The Deluxe interior features soft, durable cloth-faced seating for five and full interior trim. Front seats are high-back buckets. Optional seating for seven is available.

**4** Previa LE offers a tilt steering wheel (optional on Deluxe), while power-assisted rack-and-pinion steering is standard on all Previas.

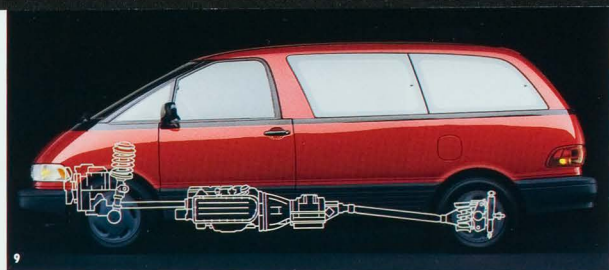
**5** A standard rear window wiper on LE helps maintain visibility in heavy mist, rain and snow. The rear wiper is conveniently operated from the same stalk that operates the front windshield wipers.

**6** Large, sure-stopping ventilated front disc brakes are standard on all Previas. Previa LE and All-Trac LE offer 4-wheel disc brakes standard.



**7** With the middle bench seat removed and the rear seats folded up, you have a virtually flat floor, enough to carry 4x8-ft. panels. Total cargo capacity is 157.8 cu. ft.

**8** Previa's optional Deluxe ETR/Cassette offers AM/FM reception and an auto-reverse cassette deck. Six speakers help distribute sound evenly throughout the interior.



**9** Previa's mid-engine location provides a virtually flat floor and a very low center of gravity. Front and rear coil-spring suspension helps smooth the ride over the road.

**10** Tilt-out side windows provide fresh air and improved circulation and are standard equipment on both Deluxe and LE models. A tilt-out rear quarter window is also standard on LE models.\*

**11** The heart of Previa's electrical system is located on the front dash for superb accessibility. Fuses are clearly labeled and easily accessible.

**12** Normal fluid checks—oil, brake and power steering fluid and radiator coolant—are simple on Previa. A unique design permits routine inspection of fluid levels at the front of the vehicle.

Previa LE shown in Burgundy Pearl.

Shown with optional equipment.

For further information on features and options, see page 15.

\*Optional on Deluxe models as part of Convenience or Third Seat Packages.





## POSSIBILITIES

A select list of options lets you customize Previa to your own tastes whenever you want increased comfort and convenience.

**1** Previa LE's optional dual glass sunroofs let fresh air in without sacrificing head room—the front sunroof tilts, while the large rear unit slides to provide an expansive view for middle and rear-seat passengers. A rear spoiler (not shown) is included when you select the sunroofs.

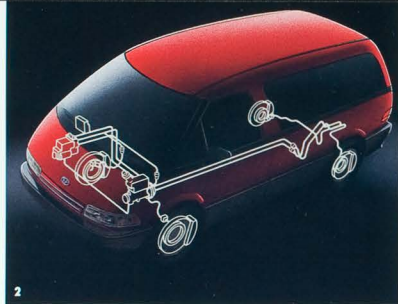
**2** An Anti-lock Brake System (ABS) is optional on Previa LE and All-Trac LE. It helps avoid wheel lockup during braking to improve control.

**3** The optional Power Package includes door locks (standard on LE), power windows and outside mirrors.

**4** When you want extra comfort for middle-seat passengers, select the Captain's Chairs for Previa All-Trac LE and LE models.

**5** Separate front and rear high-capacity air conditioning units help keep all of Previa's roomy interior uniformly cool for everyone's comfort. (Standard on LE.)

**6** Stalk-mounted cruise control and intermittent wipers put important controls at your fingertips. (Standard on LE.)

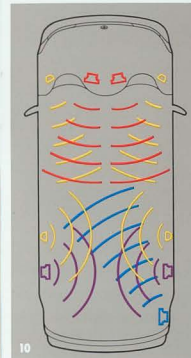


**7** Previa's rugged construction allows a standard 3,500-lb. towing capacity\* when it is also equipped with the optional frame-mounted Class II tow hitch.

**8** Optional styled aluminum alloy wheels add to Previa's sleek beauty (not available on Deluxe).



**9** Previa LE's optional Premium 3-in-1 ETR/Cassette/CD includes nine speakers and FM diversity antenna system. Plus a programmable equalizer and Dolby™ B and C noise reduc-



tion. This includes tape scan on the cassette and random access track selection on the CD.

**10** The location of the nine speakers in Previa LE's optional Premium Audio System is the result of careful research to assure uniform sound throughout the vehicle.

Previa LE shown in Sandstone Beige Metallic.

Shown with optional equipment.

Dolby™ is a registered trademark of Dolby Labs, Inc.

\*Not to exceed a GCWR of 8,200 lb. Requires additional 3,500-lb. weight-carrying frame-mounted Class II tow hitch.

## COLORS

### Interior Trim Levels



LE Cloth Blue, Gray or Beige



Deluxe Cloth Blue, Gray or Beige

### Exterior Finish



Winter White Blue or Gray



Opal White Pearl\* Gray



Silverleaf Metallic Gray



Ice Blue Pearl Blue



Nautical Blue Metallic Blue



Cadet Blue Metallic Blue



Sandstone Beige Metallic Beige



Cedarwood Metallic Beige



Solar Yellow Pearl\* Gray



Garnet Red Pearl\* Beige or Gray



Burgundy Pearl Gray

\*LE model only.

## SAFETY

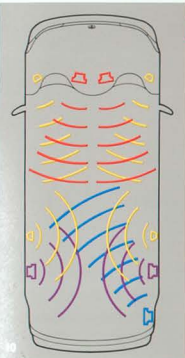
For over fifty years Toyota has built vehicles which have achieved the highest recognition for quality, dependability and engineering excellence. These accomplishments are a result of Toyota's commitment to build vehicles that respond to your needs. It is a commitment based on the belief that well-built, dependable and trouble-free vehicles are safer vehicles. And it is a commitment which requires that everything that goes into a new Toyota—design, materials, manufacture, workmanship—does so with your safety, comfort and driving enjoyment in mind. Because, ultimately, the most important thing that goes into any new Toyota is you.

### 1991 PREVIA SAFETY FEATURES INCLUDE:

- 3-point seatbelts in outboard positions
- Child-protector sliding side door lock
- Passenger power window lockout
- Ventilated front disc brakes
- Side intrusion beams on both front and side doors
- 4-wheel ventilated disc brakes (LE and All-Trac LE models only)
- Optional 4-wheel Anti-lock Brake System (ABS)—LE models only







tion. This includes tape scan on the cassette and random access track selection on the CD.

16 The location of the nine speakers in Previa LE's optional Premium Audio System is the result of careful research to assure uniform sound throughout the vehicle.

Previo LE shown in Sandstone Beige Metallic. Shows with optional equipment. Dolby™ is a registered trademark of Dolby Labs, Inc.

\*Not to exceed a GCWR of 8,200 lbs. Requires additional 3,500-lb. weight-carrying frame-mounted Class II tow hitch.

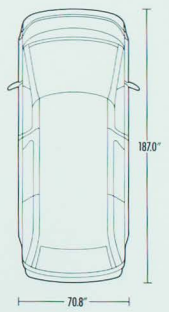
5-Standard  
 0-Optional  
 A-Dealer-installed accessory  
 -Not available  
 N/A-Not applicable  
 †Tilt-out rear quarter window part of either Convenience or Third-Seat Packages.  
 ‡Includes cruise control and front intermittent windshield wipers.  
 †Without armrests.  
 ‡Part of Convenience Package.  
 †Includes front intermittent windshield wipers.  
 ‡Part of rear wiper option.  
 †Part of Power Package.  
 ‡Power door locks standard.  
 †Including occupants, equipment and cargo.  
 †1991 EPA mileage figures shown.  
 See your Toyota dealer for details.

	LE	Deluxe	All-Trac LE	All-Trac Deluxe
<b>MECHANICAL</b>				
2.4-liter 4-cylinder twin-cam 16-valve EFI engine	S	S	S	S
Engine oil auto-feeder	S	S	S	S
Full-time all-wheel drive with viscous coupling	—	—	S	S
5-speed manual override transmission	—	S	—	S
4-speed electronically controlled automatic override transmission (ECT)	S	0	S	0
Power-assisted rack-and-pinion steering	S	S	S	S
Power-assisted ventilated front disc/rear disc brakes	S	—	S	—
Power-assisted ventilated front disc/rear drum brakes	—	S	—	S
Anti-lock Brake System (ABS)	0	—	0	—
<b>EXTERIOR</b>				
Aerodynamic halogen headlamps	S	S	S	S
Chrome front grille accents	S	—	S	—
Dual manual outside mirrors	S	S	S	S
Anti-chip lower cladding	S	S	S	S
Sliding side door	S	S	S	S
Tilt-out side and rear quarter windows	S	S <sup>†</sup>	S	S <sup>†</sup>
Dual sunroofs with sliding sunshades and rear roof spoiler	0	—	—	—
Rear roof rack	A	A	A	A
Rear intermittent window wiper	S	0 <sup>‡</sup>	S	0 <sup>‡</sup>
Styled aluminum alloy wheels	0	—	0	—
Full wheel covers	S	S	S	S
<b>INTERIOR</b>				
Reclining front bucket seats with armrests	S	S <sup>†</sup>	S	S <sup>†</sup>
Middle-row 2-passenger bench seat	S	—	S	—
Middle-row 3-passenger bench seat	—	S	—	S
Third-row split folding rear bench seat	S	0	S	0
Cloth seat and door trim	S	S	S	S
Full carpeting	S	S	S	S
Bronze or gray privacy glass	S	—	S	—
Front dual cup holder	S	S	S	S
3-point adjustable front shoulder belts and 3-point middle and rear-row seatbelts in outboard positions	S	S	S	S
Child-protector sliding side door lock	S	S	S	S
Dual air conditioning	S	0	S	0
Heavy-duty front heater with rear seat heater ducts	S	S	S	S
Rear window defogger	S	0 <sup>†</sup>	S	0 <sup>†</sup>
Side front window demisters	S	S	S	S
Tilt steering wheel	S	0 <sup>†</sup>	S	0 <sup>†</sup>
Cruise control	S	0 <sup>†</sup>	S	0 <sup>†</sup>
Front intermittent windshield wipers with wet-arm system	S	0 <sup>†</sup>	S	0 <sup>†</sup>
Mist cycle windshield wipers with wet-arm system	S	—	S	—
Power door locks	S	0 <sup>†</sup>	S	0 <sup>†</sup>
Remote hood, rear tailgate and fuel filler door releases	S	S	S	S
Speedometer, odometer, coolant temperature and fuel level gauges	S	S	S	S
Resettable tripmeter	S	S	S	S
Seatbelt, low fuel level, low oil level, door ajar and 4-way hazard warning lights	S	S	S	S
Digital quartz clock	S	S	S	S
Integrated Toyota Theft Deterrent System with security light	0	—	0	—
<b>AUDIO SYSTEMS</b>				
Deluxe ETR Radio with six speakers	S	0	S	0
Deluxe ETR/Cassette with six speakers	0	0	0	0
Premium ETR/Cassette with seven speakers	0	—	0	—
Premium 3-in-1 ETR/Cassette/CD and diversity-type antenna system with nine speakers	0	—	0	—
Compact Disc Deck	A	A	A	A
Auto-reverse Cassette Deck	A	A	A	A
<b>PACKAGES</b>				
Captain's Chair Package—includes front Captain's Chairs with armrests and dual reclining middle-row Captain's Chairs with armrests	0	—	0	—
Convenience Package—includes tilt steering wheel, 7-passenger seating, tilt-out rear quarter window, rear window defogger and tachometer (on Deluxe 5-speed models only)	S	0	S	0
Power Package—includes power windows, door locks and dual outside mirrors	0 <sup>†</sup>	0	0 <sup>†</sup>	0
Third-Seat Package—includes third-row split folding seats, 3-point rear seatbelts in outboard positions and tilt-out rear quarter window	S	0	S	0

## DATA

	LE	Deluxe	All-Trac LE	All-Trac Deluxe
<b>'91 PREVIA</b>				
<b>MECHANICAL/PERFORMANCE</b>				
Body/frame construction	Unitized body			
Steering type	Power-assisted rack-and-pinion steering			
Turning circle diameter, curb to curb (ft)	37.4			
Brakes, power-assisted	(front) Ventilated discs (rear) Ventilated discs	Ventilated discs Drums	Ventilated discs Ventilated discs	Ventilated discs Drums
Suspension	(front) MacPherson struts with coil springs, low-pressure gas-filled shock absorbers and stabilizer bar (rear) 4-link coil springs and low-pressure gas-filled shock absorbers			
Engine type	4-cylinder twin-cam 16-valve with EFI			
Displacement	2.4 liters (2338cc)			
Horsepower (SAE net)	138 @ 5,000 rpm			
Torque (SAE net)	154 ft.-lbs. @ 4,000 rpm			
<b>ELECTRICAL</b>				
Alternator	12-volts, 80 amps.			
Ignition system	Electronic			
Battery	Maintenance-free, 65-amps./hr.			
<b>EXTERIOR DIMENSIONS (in.)</b>				
Wheelbase	112.8	112.8	112.8	112.8
Overall length	187.0	187.0	187.0	187.0
Overall width	70.8	70.8	70.8	70.8
Overall height	68.7	68.7	68.7	68.7
Tread width	(front/rear) 61.6/61.2	61.6/61.2	61.6/61.2	61.6/61.2
<b>INTERIOR DIMENSIONS (in.)</b>				
Head room	(front) 39.4 (middle) 38.9 (rear) 37.8	39.4 38.5 N/A	39.4 37.8 37.8	39.4 38.5 N/A
Leg room	(front) 40.1 (middle) 36.6 (rear) 36.3	40.1 36.6 N/A	40.1 36.6 36.3	40.1 36.6 N/A
Shoulder room	(front) 61.1 (middle) 61.6 (rear) 60.6	61.1 61.6 N/A	61.1 61.6 60.6	61.1 61.6 N/A
Hip room	(front) 56.9 (middle) 64.4 (rear) 57.4	56.9 64.6 N/A	56.9 64.4 57.4	56.9 64.6 N/A
Cargo height	48.5	48.5	48.5	48.5
Cargo length at floor	97.2	97.2	97.2	97.2
Cargo width between wheel housings	48.3	48.3	48.3	48.3
<b>CURB WEIGHT (lbs.)</b>				
5-speed manual override transmission	N/A	3,455	N/A	3,670
4-speed ECT automatic override transmission	3,580	3,475	3,780	3,690
<b>CAPACITIES</b>				
Cargo capacity, rear seats removed (cu.ft.)	157.8	157.8	157.8	157.8
Gross vehicle weight (lbs.)	5,215	5,215	5,215	5,215
Cargo payload (lbs.) <sup>1)</sup>	N/A	1,760	N/A	1,545
Fuel tank (gals.)	4-speed ECT automatic override 1,635	1,740	1,435	1,525
	19.8	19.8	19.8	19.8
<b>TIRES</b>				
Type	Steel belted all-season radial blackwalls			
Size	P215/65R15	P205/75R14	P215/65R15	P205/75R14
Spare	Full-size—LE (optional on Deluxe)			
<b>MILEAGE ESTIMATES<sup>2)</sup></b>				
EPA estimated MPG city/highway	5-speed manual override N/A	19/22	N/A	18/21
	4-speed ECT automatic override 18/22	18/22	17/21	17/21
Estimated highway range miles	436	436	416	416

## SPECS



Specifications and equipment based on information available at time of printing and subject to change without notice. Some vehicles shown with optional equipment; see Features and Specifications charts. For more details on 1991 options, dealer-installed accessories and specifications in your area, contact your local Toyota dealer. A vehicle with particular equipment may not be available at the dealership. Ask your Toyota dealer to help you to locate a specifically equipped vehicle.