



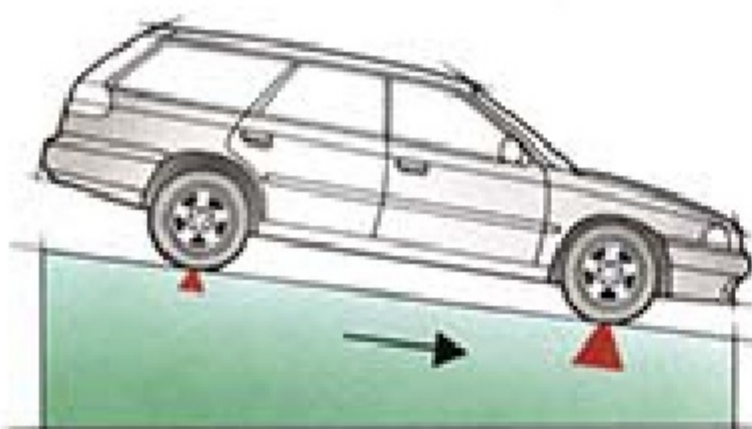
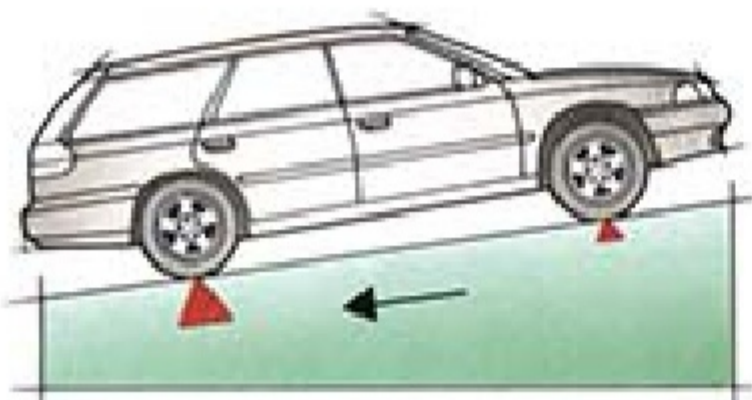
The Beauty of All-Wheel Drive.™

1 9 9 5 S u b a r u

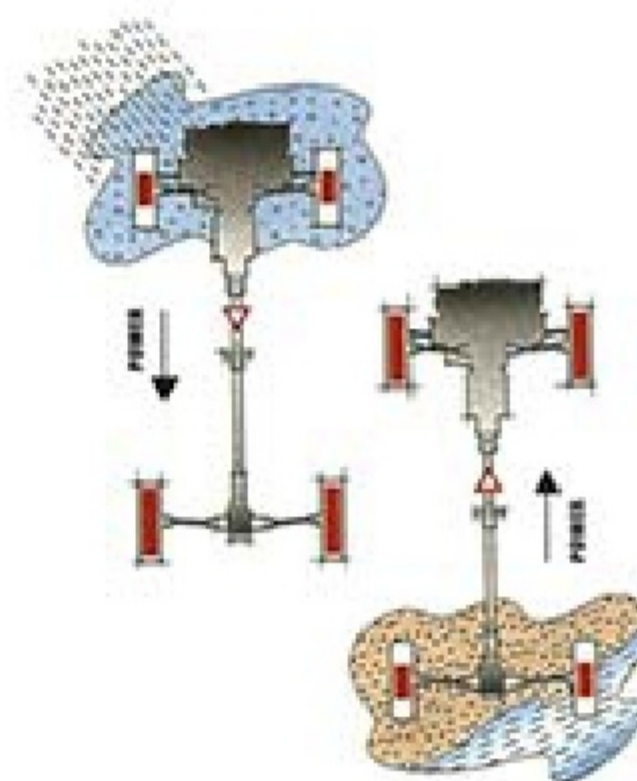
Subaru All-Wheel Drive. BEAUTIFUL ON THE SURFACE. ANY SURFACE.



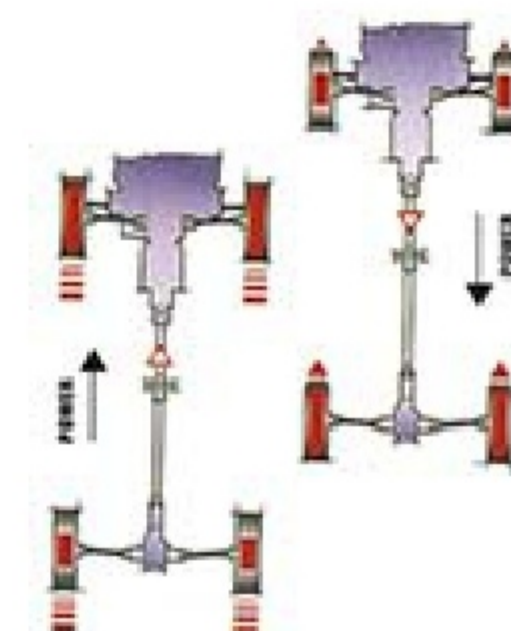
Legacy LS Wagon shown in Spruce Pearl with optional equipment.



When going uphill, a car's weight shifts toward its rear wheels. When going downhill, the opposite occurs. Subaru AWD responds by always directing power to where the weight and traction are.



On a slick surface, if either the front or rear wheels slip, power is sent to the wheels with traction (above). A similar process occurs when accelerating or braking as power goes to the weighted wheels with the most grip (below).



Just how well does Subaru AWD put the power down? The 555 Subaru World Rally Team captured the 1994 Acropolis and the last two New Zealand World Championship Rallies.

What separates Subaru® from everything else on the road today? The availability of All-Wheel Drive (AWD) on every model we make. The surefooted traction and control of Subaru AWD delivers a level of all-weather safety and performance simply unattainable in ordinary

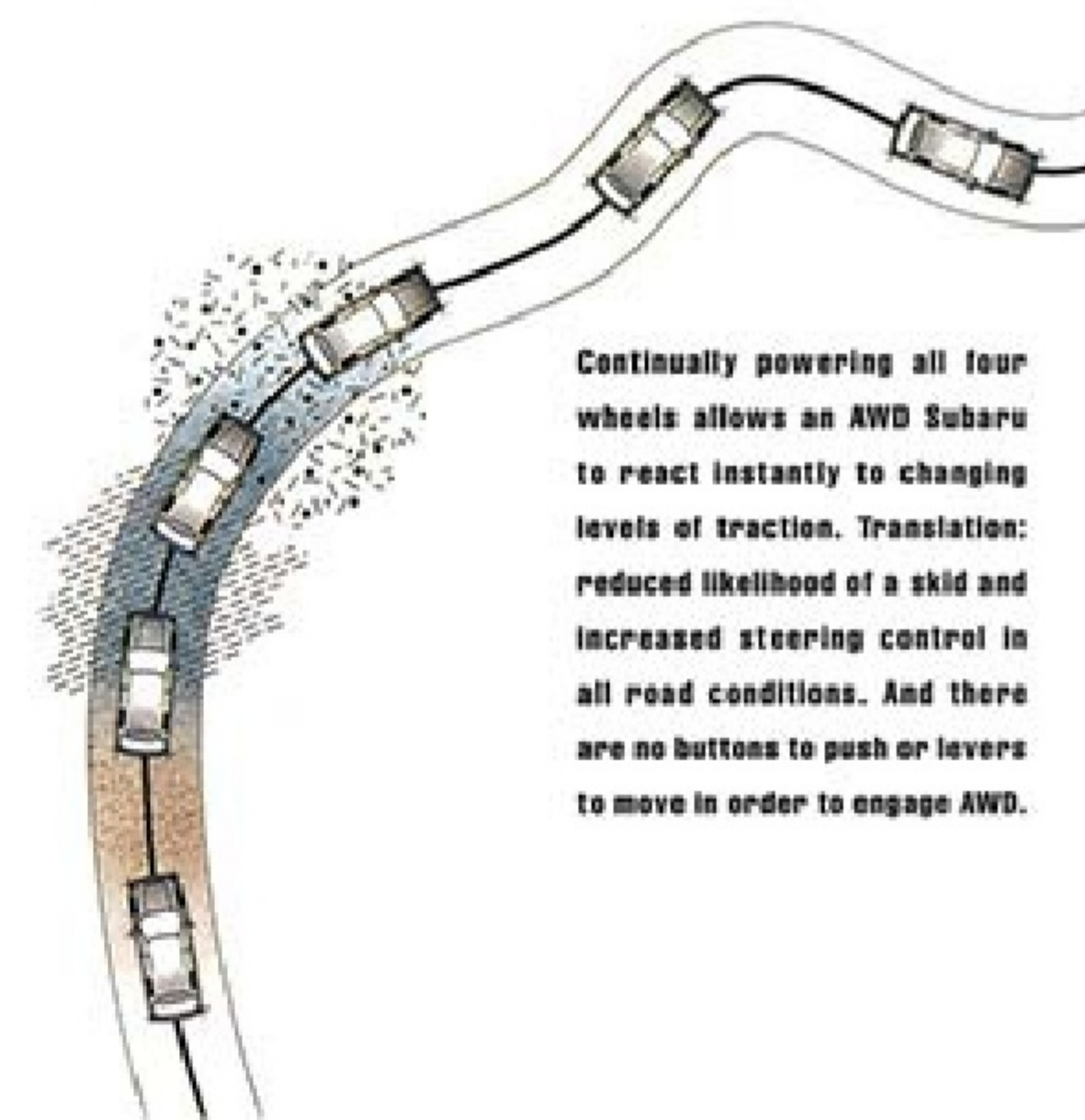
cars. In the blink of an eye, Subaru AWD automatically transfers power from the wheels that slip to the wheels that grip, instantly compensating for slippery conditions and the inherent forces of driving. And there's never a need to push buttons or throw levers to engage Subaru AWD. The traction's always there when you need it.

Subaru safety begins where most other cars leave off.

To most car companies, safety means air bags and crumple zones, passive safety features designed to help you survive an accident, but powerless in helping prevent one. That's why Subaru backs up those passive safety features with the active safety of available All-Wheel Drive.

If a front wheel starts to slip, Subaru AWD instantly routes power to the rear wheels, correcting the slippage before you even know it has occurred. Maintaining traction helps you retain steering control, especially in emergency maneuvers. And that can make the difference between having an accident and avoiding one.

The benefits extend far beyond slick roads, however. AWD also compensates for the forces of braking and accelerating for handling that's not just safer, it's quicker.

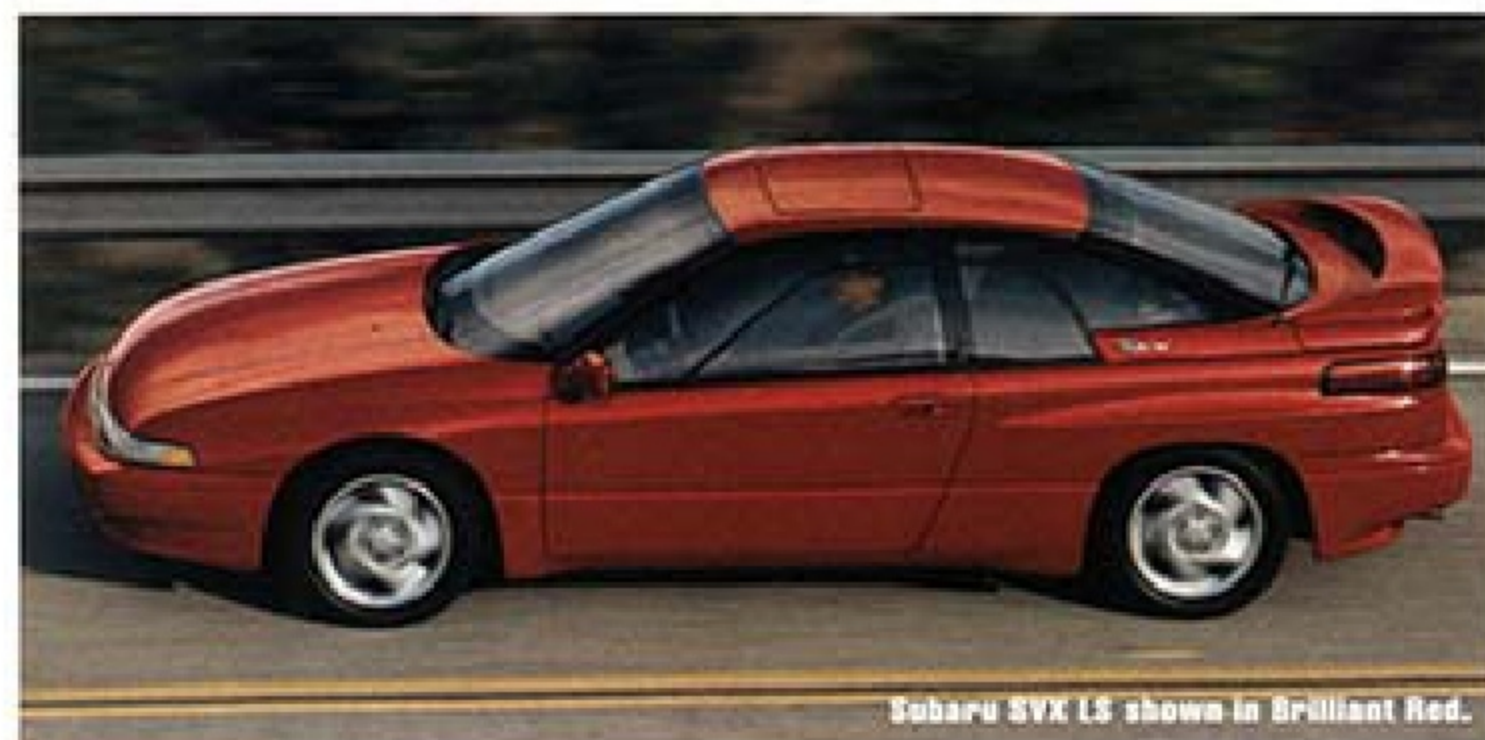


Continually powering all four wheels allows an AWD Subaru to react instantly to changing levels of traction. Translation: reduced likelihood of a skid and increased steering control in all road conditions. And there are no buttons to push or levers to move in order to engage AWD.



Subaru SVX LSI shown in Laguna Blue Pearl.

Subaru SVX has an innovative glass-to-glass canopy, inspired by fighter planes, that provides an amazingly light, airy cabin while letting you see the curving road ahead and behind.



Subaru SVX LSI shown in Brilliant Red.

It seems sports cars are becoming more alike—and less fun. Most car companies tend to find an adequate formula, then just copy it. The result is cars that look, drive, even sound the same. The Subaru SVX,[®] however, is designed around something a little different—a driver, not a formula.

THE ANTIDOTE FOR CARBON-COPY SPORTS CAR DESIGN.

With the superior traction of available Subaru All-Wheel Drive, it's a difference you'll feel behind the wheel of the Subaru SVX—performance not limited by any road surface, condition or shape.

Performance beyond the limits of ordinary sports cars.

The performance of a Subaru SVX begins with the 230-hp boxer engine, with a 6-cylinder horizontally-opposed design similar to that of the legendary Porsche 911. It features an advanced dual-mode induction system that generates instant throttle response at any speed.

For swift acceleration and economical cruising, the power is managed by a 4-speed Electronically Controlled Automatic Transmission (4EAT), which automatically engages power or economy modes based on how quickly you step on the gas, not how urgently you search for a button.

But putting the power to the pavement is where the beauty of an AWD Subaru SVX really lies. Ordinary sports cars always direct power to the same two wheels, front or rear, ignoring any loss of traction caused by the forces of braking and accelerating. An AWD Subaru SVX, however, always directs power to whichever wheels have the most grip, for unmatched performance and control.

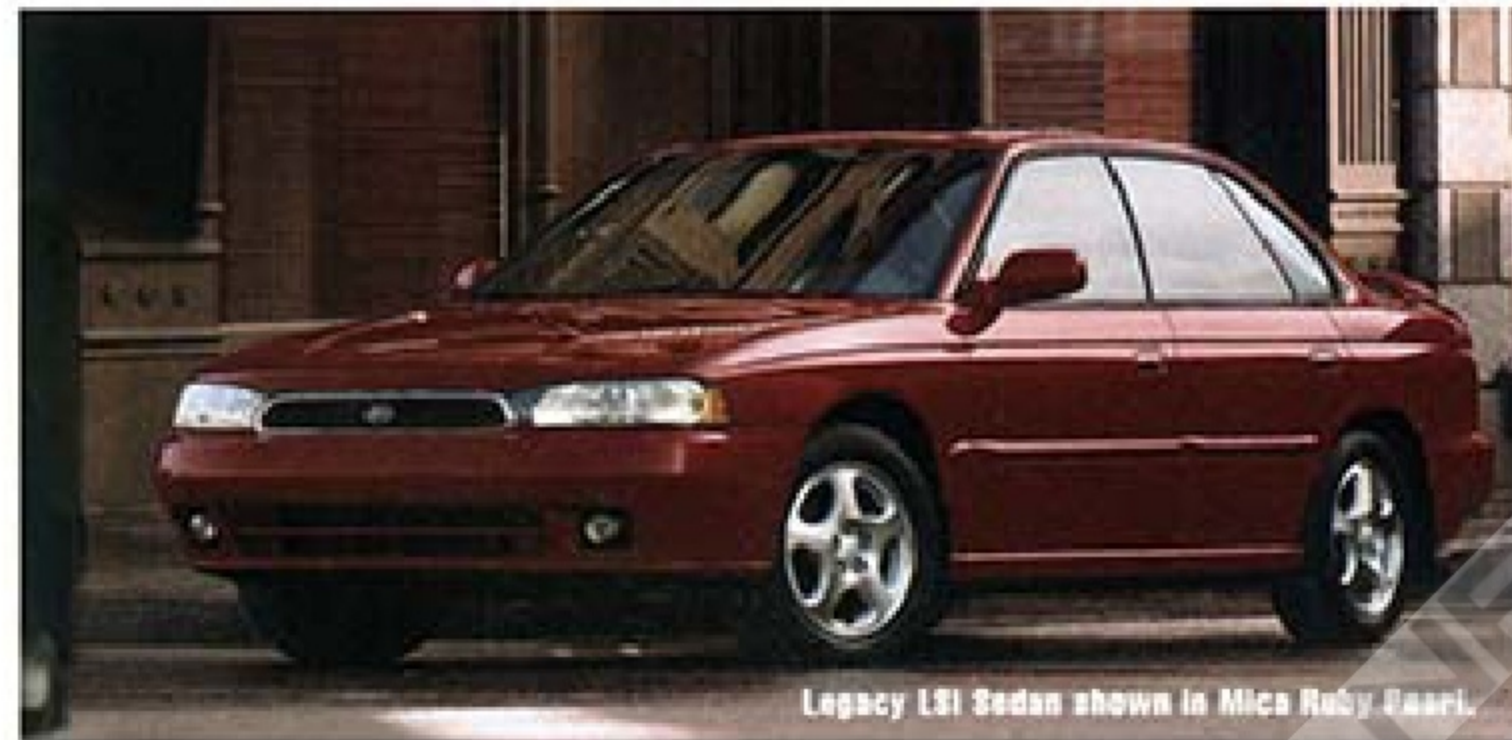
A subframe-mounted independent suspension offers crisp handling and is isolated from the rigid unibody for a ride that's controlled, not harsh. And like every 1995 Subaru, standard equipment includes dual air bags and side-impact protection meeting 1997 Federal standards.

- All-Wheel Drive and 4-wheel anti-lock disc brakes are part of the AWD Active Safety Group available on the Subaru SVX L and standard on the LSI.
- AWD Subaru SVX models have a limited-slip rear differential to counteract rear wheelspin when cornering.
- Computer-controlled intermittent wipers adjust their frequency to the car's speed to reduce distractions.
- The window-within-a-window design reduces turbulence and lets you drive in the rain with the windows open.
- The telescoping steering wheel with memory tilt adjusts for the ideal height and reach.
- A 6-speaker AM/FM stereo with cassette and CD player is standard on the LSI.



- An 8-way driver seat (power on the LSI, as shown) holds you in your ideal driving position.
- Variable-assist power steering adjusts either to engine speed (L, LS) or vehicle speed (LSI) for the perfect combination of steering ease and feel.
- The automatic climate control has six separate sensors to maintain the cabin at your desired temperature.

Subaru accessories add function and style. This Legacy LSI Sedan is shown with accessory splash guards, projector fog lamps and a rear spoiler.



Legacy LSI Sedan shown in Mica Ruby Pearl.

Subaru engineers had a specific goal in mind when they designed the new Legacy®: create a car that's recognized as much for its styling as for its engineering. The result is a new standard of refinement for All-Wheel-Drive cars. An elegant evolution of the safety and dura-

THE NEW LEGACY. A WEATHER-PROOF TUXEDO.

bility that define a Subaru, the new Legacy is a civilized way to take on even the most hostile driving environments. No wonder Subaru Legacy remains the best-selling AWD car in America.¹

The beauty of the new Legacy runs more than just skin deep. Every Legacy Sedan and Wagon contains the rugged and innovative engineering Subaru is famous for. It starts with a 16-valve, 135-hp boxer engine, refined to produce higher torque at low rpm for better passing power. The naturally balanced horizontally-opposed design produces inherently low vibration. And its compact size and low center of gravity actually increase handling stability.

Power is channeled through either a 5-speed manual transmission or an available 4-speed Electronically Controlled Automatic Transmission (4EAT), which automatically engages power and economy modes based on how quickly you step on the accelerator. Four-wheel independent suspension provides crisp handling and reflex-like maneuverability, as well as a smooth, controlled ride. And fade-resistant ventilated front disc brakes help you stop repeatedly with ease.

The Legacy Wagon adds rugged versatility with ample room for cargo and kids. Increased headroom and front-seat legroom give you more passenger space than before. A 60/40 split rear seat lets you carry long items without giving up room for rear-seat passengers. And it has more overall cargo volume than a Volvo 850 wagon.

- Dual air bags, front and rear crumple zones, and side-impact protection that already meets 1997 Federal standards lend a high level of safety to Legacy.
- All-Wheel Drive and 4-wheel anti-lock disc brakes are part of the AWD Active Safety Group available on Legacy L and standard on Legacy LS and LSI.
- A computerized engine management system integrates ignition and fuel injection and provides self-diagnosis.
- Hydraulic valve lash adjusters and an automatic cam belt tensioner help keep maintenance costs to a minimum.
- 5-speed Legacy L models have the exclusive Hill-Holder™ clutch to prevent rollback when starting on steep hills.

— Legacy L, LS and LSI Wagons feature a cargo cover and a hidden multi-box storage tray to hold the little things you can't do without.



- The ingenious dual cupholder moves out and to the side for easy access to the stereo and climate controls.
- A height-adjustable driver seat optimizes both comfort and outward vision in Legacy LS and LSI models.

¹Based on R.L. Polk & Co. Registration Statistics for year end 1993.



Legacy L Wagon with Moonroof Group shown in Deep Sapphire Pearl Mica with optional equipment.



Impreza Coupe LX shown in Aegean Blue Metallic.

Every Impreza is built with legendary Subaru reliability. In fact, 95% of the AWD Subaru vehicles sold in the last ten years are still on the road.¹

At Subaru, we believe it's better to over-engineer a car than to overestimate its abilities. In the Subaru Impreza™ Sedan, Coupe and Sport Wagon, that engineering produces driving excitement and versatility unmatched in its class.

With dual air bags and available All-Wheel Drive, the Subaru

IMPREZA. SATISFY YOUR CONSCIENCE AND YOUR SPIRIT.

Impreza can take you places ordinary cars can't go, with the safety your conscience demands. And the performance of an available 135-hp engine gives it the excitement your spirit desires.

Engineered to perform beyond the highest expectations.

Subaru Impreza is available with either a 135-hp 2.2-liter horizontally-opposed engine or a 110-hp version. With 16 valves and a single overhead camshaft, both engines deliver excellent fuel economy and impressive low-end torque for better acceleration. And they can be matched to an available 4-speed Electronically Controlled Automatic Transmission (4EAT) that automatically engages power, economy and overdrive modes.

In the cabin, you'll find a surprising amount of space and comfort. Here's how *Automobile Magazine* described it: "Inside, the cabin is comfortable and has an open feeling with really superb headroom and nice appointments, fit and finish."¹

The innovative Impreza Sport Wagon adds the versatility of standard AWD, 60/40 split fold-down rear seat and generous cargo room. And in the spirited Impreza Coupe, you get sporty style to go with the exciting performance and control of either Front-Wheel Drive or available AWD.

- Every 1995 Impreza has dual air bags, front and rear crumple zones, and side-impact protection already meeting 1997 Federal safety standards.
- The available AWD Active Safety Group includes All-Wheel Drive and 4-wheel anti-lock disc brakes (ABS).
- All Impreza Sport Wagons have Subaru AWD traction.

- Ventilated front disc brakes resist fade under repeated or heavy use.
- An inherently balanced horizontally-opposed engine with belt-driven camshafts reduces both vibration and noise.
- Four-wheel independent suspension lets each wheel absorb bumps individually for crisp, smooth handling.



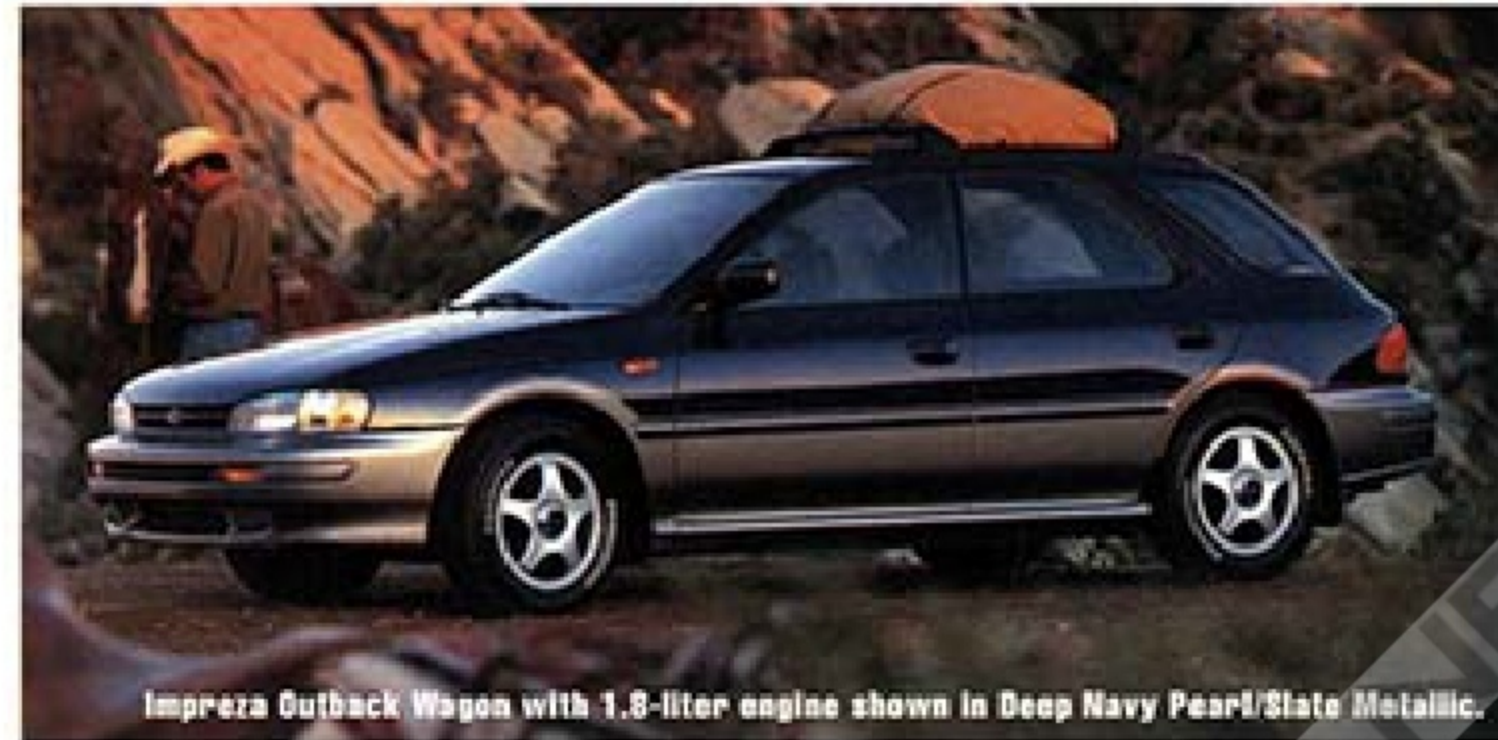
Impreza 2.2 L Sport Wagon shown in Brilliant Red with optional equipment.



Impreza LX Sedan shown in Caribbean Green Metallic with optional equipment.

¹ *Automobile Magazine*, April 1993.
² Based on R.L. Polk & Co. Registration Statistics, July 1, 1993. Includes AWD and 4WD vehicles.

The specially equipped Subaru Outback Wagons combine civilized engineering with added versatility, capability and unmistakable style.



Impreza Outback Wagon with 1.8-liter engine shown in Deep Navy Pearl/State Metallic.

Why sacrifice comfort, safety and performance for the versatility of a sport-utility vehicle when you

can have it all with the Subaru Outback® Wagons?

The Legacy and Impreza Outback Wagons are unlike

any other car. Built specifically to combine the versa-

CIVILIZED ADVENTURE WITH THE OUTBACK WAGONS.

tility of an SUV with the comfort and drivability of a Subaru, they're a civilized way to enjoy the outdoors. The Subaru Outback Wagons are equipped for your personal brand of adventure.

Escaping civilization doesn't have to mean roughing it.

It starts with the surefooted traction of Subaru AWD to take you anywhere your road to adventure leads. Outside, a roof rack expands your cargo area, and splash guards help protect the special two-tone paint in case the roads turn rough or muddy.

Inside, the Impreza Outback Wagon offers more overall cargo area than a 4-door Suzuki Sidekick. And Legacy Outback has more cargo volume than a Jeep Cherokee. Both feature special woven cloth upholstery. And a removable rubberized cargo area liner protects the carpet when bringing home wet or dirty gear.

On the road, the Legacy and Impreza Outbacks offer a smooth, controlled ride. Four-wheel independent suspension, all-season radial tires and a low center of gravity generate handling stability and predictability that will turn twisty mountain roads into miles of fun.

Unlike many SUVs, the Outback Wagons feature Full-Time AWD, so you never have to stop to engage AWD. And the Outback Wagons have dual air bags, child protection rear door locks and side-impact protection that already meets 1997 Federal standards for passenger cars. After all, some things just can't be sacrificed.

IMPREZA OUTBACK WAGON

- The all-weather traction of Subaru All-Wheel Drive is standard.
- Impreza Outback Wagon is available with either a 135-hp 2.2-liter engine with a 4-speed Electronically Controlled Automatic Transmission (4EAT) or a 110-hp 1.8-liter engine and 5-speed manual.
- Raised-white-letter all-season tires and unique full wheel covers add distinction outside.
- Special gray woven cloth upholstery and an 80-watt AM/FM stereo with cassette are featured inside.
- A removable, rubberized cargo area liner makes carrying wet or dirty gear easier.

LEGACY OUTBACK WAGON

- Legacy Outback Wagon has a 2.2-liter engine available with either a 5-speed manual or 4EAT automatic transmission.
 - 4-wheel disc brakes with 4-channel ABS are standard.
- 
- In the cargo area, tie-down hooks, an additional 12-volt power outlet and hidden multi-box storage tray add convenience and versatility.
 - Outside, Legacy Outback features projector-beam fog lamps and 6-spoke alloy wheels.



Legacy Outback Wagon shown in Spruce Pearl/State Metallic.

1995 Subaru Features.

MODEL OVERVIEW

	<i>Subaru SVX</i>	<i>Legacy</i>	<i>Impreza</i>	<i>Impreza Coupe</i>
<i>Model Availability</i>	L Sport Coupe LS Sport Coupe LSi Sport Coupe	Sedan & Wagon Brighton Wagon L Sedan & Wagon LS Sedan & Wagon LSi Sedan & Wagon Outback Wagon	Sedan L Sedan & Sport Wagon 2.2 L Sedan & Sport Wagon LX Sedan & Sport Wagon Outback Wagon (1.8-liter) Outback Wagon (2.2-liter)	Coupe Coupe L Coupe 2.2 L Coupe LX

ENGINE & DRIVETRAIN

<i>Engine Design and Fundamental Characteristics</i>	Horizontally-opposed, with die-cast aluminum-alloy block. Aluminum-alloy heads with centrally located spark plugs. Low center of gravity, longitudinal mount and inherently balanced design provide improved handling stability with reduced noise and vibration. Hydraulic valve lash adjusters reduce wear and maintenance			
<i>Engine Configuration</i>	6-cylinder DOHC 24-valve	4-cylinder SOHC 16-valve	4-cylinder SOHC 16-valve	4-cylinder SOHC 16-valve
<i>Standard Engine Displacement and Peak Output</i>	3.1 liters 210 hp, 228 lb-ft torque	2.2 liters 135 hp, 140 lb-ft torque	1.8 liters (Impreza, L): 110 hp, 110 lb-ft torque	1.8 liters (Coupe, L): 110 hp, 110 lb-ft torque
<i>Available Engine Displacement and Peak Output</i>			2.2 liters (2.2 L, LX): 135 hp, 140 lb-ft torque	2.2 liters (2.2 L, LX): 135 hp, 140 lb-ft torque
<i>Fuel Injection</i>	Sequential multi-port with dual-spray injectors, monitored by computerized engine management system			
<i>Electronic Ignition</i>	Direct-firing distributorless	Distributorless	Distributorless	Distributorless
<i>4-Speed Electronically Controlled Automatic Transaxle (4EAT)</i>	Standard	Standard on LS, LSi. Available on L, Brighton, Outback Wagon	Standard on 2.2 L, LX, Outback Wagon 2.2. Available on FWD L	Standard on 2.2 L, LX. Available on FWD L
<i>5-Speed Manual Transaxle</i>	Not available	Standard on Legacy, Brighton, L, Outback Wagon	Standard on Impreza, L, Outback Wagon 1.8	Standard on Coupe, L

ACTIVE SAFETY FEATURES

<i>Full-Time All-Wheel Drive (AWD)</i>	Standard on L with Active Safety Group, LSi	Standard on Brighton, L with Active Safety Group, LS, LSi, Outback Wagon. Available on L	Standard on L with Active Safety Group, 2.2 L, LX, all Wagon models. Available on Impreza, L Sedan	Standard on L with Active Safety Group, 2.2 L, LX. Available on Coupe, L
<i>Front-Wheel Drive (FWD)</i>	Standard on L, LS	Standard on Legacy, L	Standard on Impreza, L Sedan	Standard on Coupe, L
<i>4-Wheel, 4-Channel Anti-lock Braking System (ABS)</i>	Standard on L with Active Safety Group, LSi	Standard on L with Active Safety Group, LS, LSi, Outback Wagon	Standard on L with Active Safety Group, LX	Standard on L with Active Safety Group, LX
<i>4-Wheel Disc Brakes</i>	Standard	Standard on L with Active Safety Group, LS, LSi, Outback Wagon	Standard on L with Active Safety Group, LX	Standard on L with Active Safety Group, LX
<i>Front Disc/Rear Drum Brakes</i>	Not available	Standard on Legacy, Brighton, L	Standard on Impreza, L, 2.2 L, Outback Wagons	Standard on Coupe, L, 2.2 L
<i>Variable-Assist Power Rack-and-Pinion Steering</i>	Engine-rpm sensing (L, LS) Vehicle-speed sensing (LSi)	Engine-rpm sensing	Engine-rpm sensing	Engine-rpm sensing
<i>4-Wheel Independent Suspension</i>	Standard	Standard	Standard	Standard

PASSIVE SAFETY FEATURES

<i>Dual SRS Air Bags¹</i>	Standard	Standard	Standard	Standard
<i>3-Point Manual Front and Rear Seat Belts</i>	Standard	Standard ² (with adjustable front shoulder-belt anchors)	Standard ² (with adjustable front shoulder-belt anchors)	Standard ²
<i>Child Protection Rear Door Locks</i>	Not applicable	Standard	Standard	Not applicable
<i>Front and Rear Crumple Zones</i>	Standard	Standard	Standard	Standard
<i>Side-Impact Door Beams</i>	Standard. Every 1995 Subaru SVX, Legacy, Impreza and Impreza Coupe meets the 1997 Federal Government side-impact standards			
<i>Collapsible Steering Column with Pillar-to-Pillar Support Beam</i>	Standard	Standard	Standard	Standard
<i>Halogen Headlamps with Built-in Aimers</i>	Projector low beams, halogen high beams and fog lamps	Standard (plus projector fog lamps on Outback Wagon)	Standard	Standard (plus halogen fog lamps on L, 2.2 L, LX)

SUBARU WARRANTIES

For complete warranty information including coverage and exclusions, see your Subaru dealer.

<i>Basic Warranty</i>	3 years or 36,000 miles ³	3 years or 36,000 miles ³	3 years or 36,000 miles ³	3 years or 36,000 miles ³
<i>Powertrain Warranty</i>	5 years or 60,000 miles ³	5 years or 60,000 miles ³	5 years or 60,000 miles ³	5 years or 60,000 miles ³
<i>Rust Perforation Warranty</i>	5 years, unlimited mileage	5 years, unlimited mileage	5 years, unlimited mileage	5 years, unlimited mileage

NOTES


¹ Supplemental Restraint System (air bags) affords the driver and front passenger additional protection in a frontal collision. The system provides supplemental protection only, and seat belts must be worn in order to provide the best combined protection in a serious accident.

² Plus rear center lap belt.

³ Whichever comes first.

Specifications in this brochure are based on the latest product information available at the time of publication. Certain accessories and equipment may not be available at the time of publication. Subaru of America, Inc., reserves the right to change or discontinue at any time, without notice, prices, colors, materials, equipment, accessories, specifications, models and packages. Colors shown may vary due to reproduction and printing processes. For more information, contact your Subaru dealer.

SUBARU 
The Beauty of All-Wheel Drive.™

 This brochure has been printed in U.S.A. on recycled paper.

TREAD LIGHTLY! 

© 1994 Subaru of America, Inc. MSA KM19506