



1995 TOYOTA

TOYOTA TOUCH is a philosophy in action. It's our effort to make all your experiences with Toyota

the very best: from the time of your initial contact, during the sale and throughout the entire life of your car,

our focus is your complete satisfaction. And there's no better example of this than the Toyota Touch

LEASE. Through the Toyota Touch Lease, you can drive a new Toyota with the lease term that's

right for you, and still have the option of purchasing the vehicle at lease end. And because Toyota vehicles

have a historically high resale value, monthly payments tend to be low, thereby making a Toyota Touch Lease

even more attractive. The reason for this is SIMPLE. When you lease a vehicle, you pay for the

difference between the initial cost of the vehicle and its projected value when your lease period is over (rather

than the entire cost of the vehicle). In other words, you're only paying for what you use. What's more, all new

Toyota vehicles are eligible under the Toyota Touch Lease and, just like a purchase,

your leased vehicle carries a Toyota new-vehicle limited warranty. So, see your partic-

ipating Toyota dealer for details to find out more about how easily a Toyota

Touch Lease can put YOU into the Toyota you've always dreamed of driving.

For additional information, call our Customer Assistance Center at 1-800-331-4331

(weekdays 9 a.m. to 9 p.m. EST). Or our Telecommunications Device for the Deaf

(TDD) at 1-800-443-4999. Buckle Up! Do it for those who love you.



BRUNNAR



LAND CRUISER



TRUCKS



TRUCKS



TERCEL



COROLLA



CAMRY



AWILON



PREVIA



PASEO



CELICA



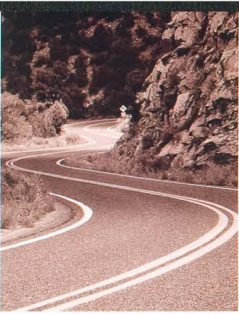
MR2



SUPRA

# Paseo





## DRIVING PRINCIPLES

AS A COMPANY that's been a part of America for 38 years, Toyota's ultimate

goal is your complete satisfaction. To this end, Toyota is devoted to providing you with

the best products and services in the automotive industry. When you choose a Toyota vehicle, you have a

COMMITMENT that it will live up to the reputation of quality for which Toyota is known.

This dedication to you also extends to the way Toyota does business here in AMERICA. That's

why Toyota has a total investment of more than \$5 billion in the American market including design centers,

testing facilities and manufacturing plants. In fact, many of the Toyota Trucks, Corollas, Camrys, and all new

Avalons sold in the U.S. are built right here. Over 84,000 men and women are employed in the U.S. by Toyota

and Toyota dealers. PARTNERSHIPS with hundreds of American suppliers also have

had a significant economic impact across the United States. From Toyota's substantial national investment

in the U.S. to local efforts at the dealer level, the

Toyota family is working hard to ensure complete

SATISFACTION throughout

your ownership experience.





4 | PASEO

It's BOTH sides of your brain saying 'very nice choice.'



2-Door Coupe shown in Super Red with optional equipment.

**T H I N K** of it as outsmarting your income. With a twin-cam 16-valve engine that turns going from here to there into pure entertainment. The excitement of 100 horsepower hitting 6,400 rpm.\* And a wind-slicing body design that's not afraid of a little attention.

**S L I D E** into the cockpit. Crank up the ETR (Electronically-Tuned Radio) with 2 door-mounted speakers. Your Paseo is primed, ready to hit the highway with plenty of low- to high-range acceleration. Set to snack on corners with power-assisted rack-and-pinion steering, and finesse the rough spots with its sport-tuned suspension. Gotta go to work? Commutes are a cruise with the maneuverability of front-wheel drive. And you can track your rpm on the tachometer as you shift through the standard 5-speed manual overdrive transmission. Or choose a 4-speed electronically controlled automatic overdrive transmission (ECT) instead. Whatever your destination, settle back and enjoy the trip. With Toyota quality and Paseo style, buying smart is a sport anybody can play.

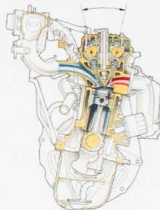
\*91 hp @ 5400 rpm in vehicles equipped with California emissions.



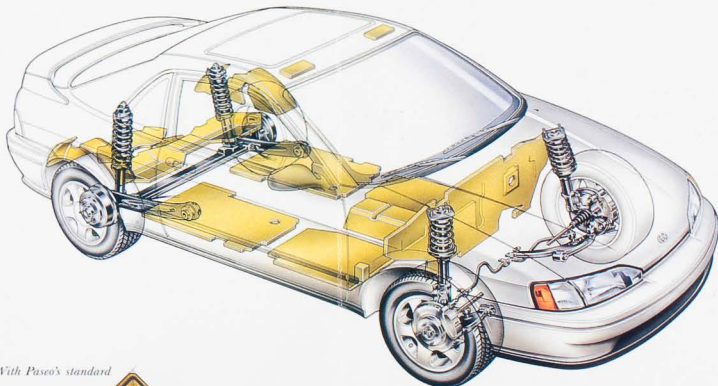
your brain saying 'very nice choice.'



For increased stopping performance, Paseo features standard power-assisted ventilated front discs and rear drums to help give you greater assurance behind the wheel.



Up front, technology harnesses performance and efficiency in a compact engine. Narrow angle valve geometry, twin cams and pentroof combustion chambers result in efficient fuel burning for better fuel economy\*, maximum horsepower and a broader power band.



With Paseo's standard 5-speed manual overdrive transmission, you'll enjoy mpg of 28 city/34 highway\*, plus an 11.9-gal. tank to stretch the time between fill-ups.



Strategically placed Noise, Vibration and Harshness (NVH) dampening panels enhance the smooth, quiet ride. Paseo's enjoyable ride and sporty handling balance is due to independent MacPherson strut front suspension, front and rear stabilizer bars and radial tires.

\* See EPA mileage statement on page 11 for details.



It's the P E R F E C T fit.

PASEO INTERIOR | 7



*The matte black instrument panel houses classic analog gauges in a shaded hood. Instrumentation includes tachometer, fuel and coolant temperature gauges, and tripmeter.*



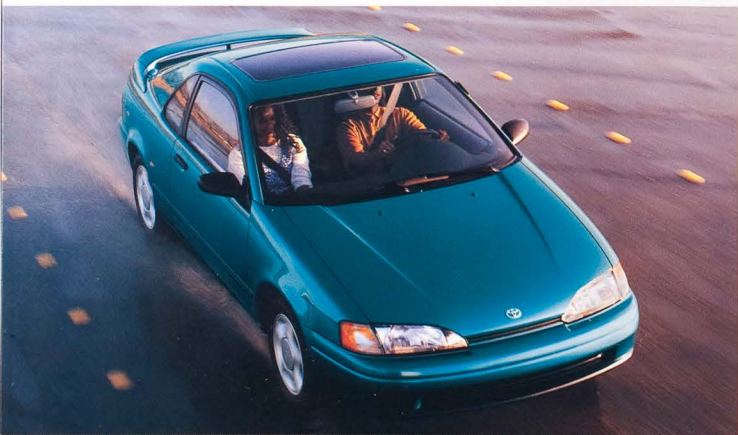
*A slide-out dual cup holder, big enough to handle 12-oz. containers, is built right into the console so drinks are close at hand.*

**I N S I D E** the Paseo, you're wrapped up in high-back sport-type front bucket seats with integrated head-rests. Contoured bolsters firmly support the body during cornering. And an advanced ergonomic design places controls where they're easy to see and convenient to operate.

**T H E D A S H** is complete, with full instrumentation and a digital clock. Intermittent windshield wipers and a rear window defogger handle the whims of weather. Remote hood, trunk and fuel-filler door releases let you open up without getting out. And a fold-down rear seat with security lock makes your Paseo as practical as it is pleasurable.



*Interior shown with Black Sport Cloth and optional equipment.*





## It's rewriting the R U L E S .



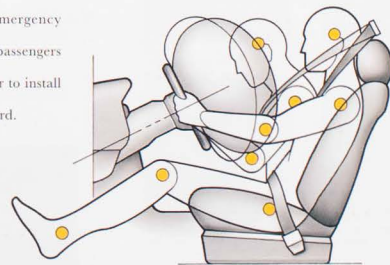
2-Door Coupe shown in Sierra Green Metallic with optional equipment.

**TOUGH AND QUICK**, the Paseo uses both passive and active systems to help keep you safe. Active technology, like the lively suspension and responsive power-assisted rack-and-pinion steering, helps you make a move when you need to.

**STRUCTURAL INTEGRITY** is solid, with passive high-tech components like protective side-door impact beams, energy-absorbing crumple zones and the extensive use of high-tensile-strength steel throughout the car body. Safety is enhanced by padded interior areas and a collapsible steering column. 3-point seatbelts restrain the driver in the event of collision. And the inclusion of Automatic Locking Retractor (ALR)/Emergency Locking Retractor (ELR) seatbelts offers passengers added protection while also making it easier to install child safety seats. A driver air bag is standard.



*An option for even more controlled braking, the Anti-lock Brake System (ABS) employs a computer with front and rear speed sensors to help avoid brake lockup and maintain steering control during sudden stops.*



*The Toyota driver air bag is a Supplemental Restraint System (SRS) designed to inflate in a severe frontal collision. In all other accidents, the air bag will not inflate.*

*To minimize the risk of severe injury in all types of crashes, all occupants must always wear seatbelts. Do not sit or place objects close to an air bag. Please read your Owner's Manual.*



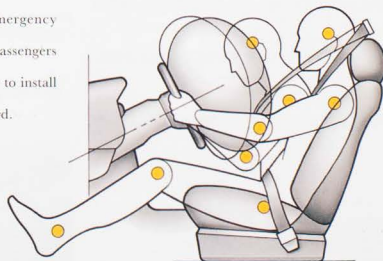
# rewriting the RULES.

**TOUGH AND QUICK**, the Paseo uses both passive and active systems to help keep you safe. Active technology, like the lively suspension and responsive power-assisted rack-and-pinion steering, helps you make a move when you need to.

**STRUCTURAL INTEGRITY** is solid, with passive high-tech components like protective side-door impact beams, energy-absorbing crumple zones and the extensive use of high-tensile-strength steel throughout the car body. Safety is enhanced by padded interior areas and a collapsible steering column. 3-point seatbelts restrain the driver in the event of collision. And the inclusion of Automatic Locking Retractor (ALR)/Emergency Locking Retractor (ELR) seatbelts offers passengers added protection while also making it easier to install child safety seats. A driver air bag is standard.



*An option for even more controlled braking, the Anti-lock Brake System (ABS) employs a computer with front and rear speed sensors to help avoid brake lockup and maintain steering control during sudden stops.*



*The Toyota driver air bag is a Supplemental Restraint System (SRS) designed to inflate in a severe frontal collision. In all other accidents, the air bag will not inflate.*

*To minimize the risk of severe injury in all types of crashes, all occupants must always wear seatbelts. Do not sit or place objects close to an air bag. Please read your Owner's Manual.*

**INDIVIDUALITY** is the key with Paseo's wide selection of sporty equipment and hot accessories. Create an outgoing persona with additions to the exterior. Or a reserved personality that's only wild when you get to know it.

**CHOOSE** audio components that caress your senses with quality sound. Or welcome the great outdoors into your Paseo with the removable glass moonroof. The color-keyed rear spoiler with integrated LED center high-mount stoplamp puts a dramatic finishing touch on Paseo's distinctive rear profile. And remember—Toyota vehicles are built with popular option combinations. Not all options are available separately. Your Toyota dealer can help find the Paseo that is right for you.



# It's your CHOICE.



Enhance the high-performance profile of your Pasco with the optional color-keyed rear spoiler and its integrated LED stoplamp.



Choose the Deluxe ETR/Cassette combo with 4 speakers, auto-reverse and backlit graphics. Or the Compact Disc Deck accessory\* with repeat and scan functions.



An excellent sound system is one of your Pasco's top accessories. Toyota's 6-Disc CD Changer\* keeps the soundtrack pumping.

This form-fitting custom accessory nose mask helps protect Pasco's low, sweeping front end from nitty-gritty road debris. And it emphasizes that road-hungry look too.



Optional pop-up/removable glass moonroof stores handsily in a protective soft pouch that straps into the lockable trunk. There's also a removable sunshade.



The 7.7 cu.-ft. trunk space holds more than you might think. And this handy accessory cargo net keeps small items from rolling around.

INDIVIDUALITY is the key with Pasco's wide selection of sporty equipment and hot accessories. Create an outgoing persona with additions to the exterior. Or a reserved personality that's only wild when you get to know it. CHOOSE audio components that caress your senses with quality sound. Or welcome the great outdoors into your Pasco with the removable glass moonroof. The color-keyed rear spoiler with integrated LED center high-mount stoplamp puts a dramatic finishing touch on Pasco's distinctive rear profile. And remember—Toyota vehicles are built with popular option combinations. Not all options are available separately. Your Toyota dealer can help find the Pasco that is right for you.

SAFETY: At Toyota, our concern for your safety is paramount. That's why every Toyota Car and Truck is equipped with a host of safety features that are designed to help protect you against the unexpected. Because, ultimately, the most important thing that will go into any new Toyota is you.

1995 PASCO SAFETY FEATURES*	
Air bag—driver Supplemental Restraint System (SRS)†	S
Anti-lock Brake System (ABS)—optional	O
Body structure—crumple zones and side-door impact beams	S
Seatbelts/front—3-point front-passenger Automatic Locking Retractor (ALR)/Emergency Locking Retractor (ELR)	S
Seatbelts/rear—3-point with rear outboard-passenger Automatic Locking Retractors (ALR)/Emergency Locking Retractors (ELR)	S
Shoulder belt—non-motorized 2-point passenger-side front passive-restraint with manual lap belt	S

WARRANTY: A 36-month/36,000-mile basic new-vehicle limited warranty applies to all components other than normal wear and maintenance items. Additional 60-month limited warranties cover your powertrain (for 60,000 miles) and corrosion perforation (for unlimited miles). See your Toyota dealer for details. In addition, there may be times when we will establish a special policy adjustment which will further defray repair costs.

ACCESSORIES	
Cargo net—rear trunk	A
Console box—center	A
Floor mats—carpeted	A
Mask—front-end with storage bag	A
Mudguards—front and rear	A
Security System—Toyota Vehicle Security System (TVSS) with remote control	A
Wheel locks—aluminum alloy or steel	A

\* Recommended for use with 4-speaker audio systems only.

† See page 9 for more information on Pasco's driver air bag Supplemental Restraint System (SRS).

# Features

MECHANICAL	
Anti-lock Brake System (ABS)—includes larger temporary spare tire	O
Brakes—power-assisted front ventilated disc/rear drum	S
Drivetrain—front-wheel drive	S
Engine—1.5-liter 4-cylinder twin-cam 16-valve electronically fuel-injected (EFI)	S
Spawning—power-assisted rack-and-pinion	S
Tires—All-Season 185/60R14 steel-belted radial blackwall	S
Transmission—5-speed manual override	S
Transmission—4-speed electronically controlled automatic override (ECT)	O

EXTERIOR	
Bumpers—color-keyed	S
Glass—tinted	S
Headlamps—aerodynamic halogen	S
Mirrors—dual black remote-controlled outside	S
Moldings—Black protective body-side	S
Moonroof—pop-up/removable glass with removable sunshade	O
Rear spoiler—color-keyed aerodynamic with LED stoplamp	S
Wheel covers—full	S
Wheels—aluminum alloy	O
Windshield wipers—intermittent	S

INTERIOR	
Air conditioning—(CFC-free)	O
Carpeting—full with driver-side footrest	S
Clock—digital quartz	S
Cruise control	O
Cup holder—dual	S
Defogger—rear window	S
Gauges—speedometer, tachometer, coolant temperature and fuel level, odometer and tripmeter	S
Light—trunk area courtesy	S
Release—remote hood, trunk and fuel-filler door	S
Seats/front—reclining high-back sport-type with integrated headrest	S
Seat/rear—fold-down with security lock	S
Seat trim—sport fabric includes door trim	S
Storage pockets—front doors/rear quarter areas	S
Warming lights—air bag, seatbelts, battery, brake, oil pressure	S
Wiper motor and heater	S
Warning tone—headlamps/on/seatbelt	S

PACKAGES	
All-Weather Guard Equipment Package—includes luggage door trim, larger wiper washer tank, heavy duty, rear window defogger with timer, battery, starter, alternator, windshield wiper motor and heater	O

AUDIO SYSTEMS	
ETR (Electronically Tuned Radio)—with 2 speakers	S
Deluxe ETR/Cassette—with 4 speakers	O
Cassette Deck—auto-reverse with Dolby®	A
Compact Disc Deck—(4-speaker system only)	A
CD Changer—6-Disc (4-speaker system only)	A

PERFORMANCE	
2-Door Coupe	
(horsepower—SAE net, in vehicles equipped with California emissions)	93 @ 5,400 rpm
(torque—SAE net, in vehicles equipped with California emissions)	91 lb.-ft. @ 3,200 rpm
(torque—SAE net, in vehicles equipped with California emissions)	100 lb.-ft. @ 4,400 rpm

# Specs

MECHANICAL/PERFORMANCE	
Brakes—power-assisted	(front/rear) Discs/Drums
Construction—body/frame	Unibody
Drivetrain	Front-wheel drive
Engine	(type) 4-cylinder twin-cam 16-valve with electronic fuel injection
	(displacement) 1.5 liters (1,497cc)
	(horsepower—SAE net, in vehicles equipped with California emissions)
	(torque—SAE net, in vehicles equipped with California emissions)

EXTERIOR DIMENSIONS (in.)	
Height—overall	50.2
Length—overall	163.2
Wheelbase	95.7
Width—overall	68.2
Width—trunk	(front/rear) 55.3/54.9

INTERIOR DIMENSIONS (in.)	
Head room	(front/rear) 37.7/32.0
Hip room	(front/rear) 53.7/49.0
Leg room	(front/rear) 41.1/30.0
Shoulder room	(front/rear) 53.6/52.4

CAPACITIES	
Fuel tank	(gals.) 11.9
Interior EPA volume—including cargo volume (cu. ft.)	64.9
Trunk capacity—rear seat up	(cu. ft.) 7.7

CURB WEIGHTS (lbs.)	
Transmissions	(5-speed manual override/4-speed electronically controlled automatic override (ECT)) 2,070/2,160

TIRES	
Size	185/60R14
Spare	Temporary
Type	All-Season steel-belted radial blackwall

MILEAGE ESTIMATES*	
EPA estimated MPG city/highway	29/36
Transmissions	(5-speed manual override/4-speed electronically controlled automatic override (ECT)) 26/33

S—Standard  
O—Factory option  
A—Dealer or Port-installed accessory  
\*Dobly is a registered trademark of Dobly Labs, Inc.  
†Also available as Dealer- or Port-installed accessory.  
\*1995 preliminary EPA mileage estimates determined by Toyota. 1995 EPA mileage estimates not available at time of printing. See your Toyota dealer for details.  
Some vehicles are shown with optional equipment.  
See Features/Specs charts. For details on 1995 vehicle specifications, standard features and optional equipment in your area, contact your Toyota dealer. A vehicle with particular equipment may not be available at the dealership. Ask your Toyota dealer to help locate a specifically equipped vehicle. Specifications, standard features and optional equipment are based upon information available at the time of printing and are subject to change without notice. Specifications, standard features and optional equipment are for mainland U.S.A. vehicles only and may differ in the state of Hawaii and in other regions.



## Color and Fabric Options



*Platinum Metallic  
with Black Interior*



*Bright Blue Pearl  
with Black Interior*



*Black on Black*



*Super Red  
with Black Interior*



*Super White  
with Black Interior*



*Savvy Green Metallic  
with Black Interior*



*Red's Pearl  
with Black Interior*



*Intrepid Pearl  
with Black Interior*



*Super Black Metallic  
with Black Interior*



Enhance the high-performance profile of your Paseo with the optional color-keyed rear spoiler and its integrated LED stoplamp.



Choose the Deluxe ETR/Cassette combo with 4 speakers, auto-reverse and backlit graphics. Or the Compact Disc Deck accessory\* with repeat and scan functions.



An excellent sound system is one of your Paseo's top accessories. Toyota's 6-Disc CD Changer\* keeps the soundtrack pumping.

This form-fitting custom accessory nose mask helps protect Paseo's low, sweeping front end from nitty-gritty road debris. And it emphasizes that road-hungry look too.



Optional pop-up/removable glass moonroof stores handily in a protective soft pouch that straps into the lockable trunk. There's also a removable sunshade.



The 7.7 cu. ft. trunk space holds more than you might think. And this handy accessory cargo net keeps small items from rolling around.

\* Recommended for use with 4-speaker audio systems only.