

Ford
Falcon
Futura
and
GLi.





THE SPIRIT OF CONTINUOUS IMPROVEMENT.



Introduction	5
Engineering	6
Interior Design	10
Safety and Security	12
Accessories	13
Options	14
FordCars	14

Falcon Futura sedan in Regency Red, Falcon Futura wagon in Arctic Blue.



INTRODUCTION

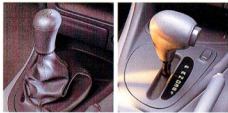
There's a spirit at Ford. Driving. Dynamic. Ever challenging. A spirit of continuous improvement. It fuels our constant pursuit of higher standards of vehicle quality, safety, efficiency and owner satisfaction.

This spirit has inspired the latest Falcons. They introduce significantly revised suspension and steering systems. They have engines that run smoother and quieter.

They bring you new ideas like "Smart Tint" glass. And today's Falcon Futura and GLi have interiors that offer more comfort and refinement than ever before.

So come and discover how immensely enjoyable the newest Falcon sedans and wagons really are.

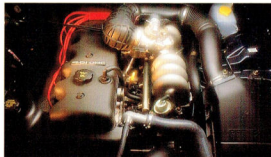
Making the latest generation of Falcons the safest, the finest handling and the most rewarding to drive that we've ever built... that's the spirit at Ford.



A smooth shifting 5-speed manual transmission is standard on Falcon GLi sedan and wagon and Futura sedan. Futura wagon is fitted with an advanced electronically controlled 4-speed automatic transmission (optional on the other models). It features "normal" and "economy" modes for greater efficiency.

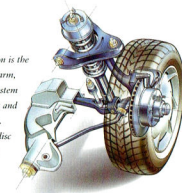
Ford's advanced 4.0 litre 6-cylinder and 5.0 litre V8 engines are computer-managed to deliver high power and torque outputs with efficiency and smoothness.

The 4.0 litre six develops 157 kW @ 4900 rpm. The Ford V8 produces 163 kW @ 4500 rpm.



Falcon's got the power and strength to do all the things you want to do - like tow that boat or run or haul a trailer.

Falcon's front suspension is the reliable short and long arm, long spindle (SLAS) system tuned to keep harshness and road noise at low levels. Fade resistant 4-wheel disc brakes provide efficient stopping power.



SPIRITED PERFORMANCE.

ENGINEERING

One drive and you'll appreciate the improvements we've made to the steering and suspension geometry. Straight off you'll notice how Falcon soaks up the

bumps, yet remains taut and ever-responsive. Moving into a corner, body roll is minimal and stability is maintained, even with every seat occupied and the boot full of luggage.

The handling matches the capability of Falcon's powerful and efficient 6-cylinder and V8 engines which run more smoothly and quietly than ever before.

The power rack and pinion steering makeover

delivers an excellent feeling of control - it's quick and responsive, with a very positive 'on-centre' feel. You're left in absolutely no doubt that you're driving a car - or wagon - that truly enjoys the road!





Relax - Futura gives you cruise control.



Cup holder convenience. Anyone for coffee?



Futura's quality 6-speaker 40 watt audio system.



Steering column adjusts for personal comfort.



Quality time - Futura's digital clock.



Vent and heat controls (air conditioning optional).



Front seats have plenty of comfort controls.



60/40 split fold backrest handles awkward objects.



Falcon Futura shown with optional passenger airbag.

INTERIOR DESIGN

In so many ways, you'll find Ford Falcon really gets it right. Right down to the smallest details.

Falcon has always been big on comfort. Now, both

front seats have vertically adjustable lumbar support. Seat belts and switches are colour-keyed to the interior. Seat fabrics and door trims feature up-to-the-minute designs, the instrument panel has a fresh new look.

Speed sensitive intermittent wipers are included for the first time on Futura. And if you need a mobile phone, Falcon is wired up ready for one.

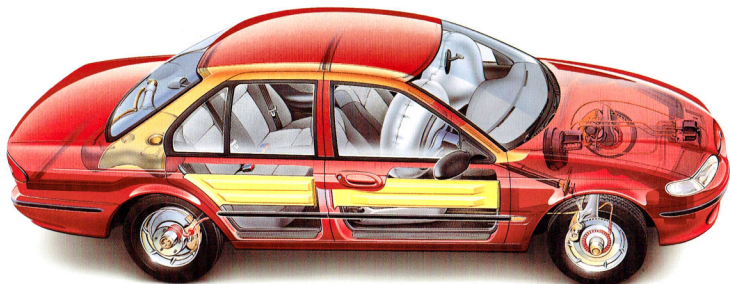
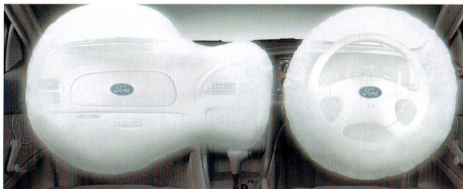
Has someone left a reading light on? No worries,

the lamp will turn off automatically, helping to save the battery. And you're surrounded by "Smart Tint" glass that has a protection rating of UPF 15+. All to ensure you feel much more comfortable in a Falcon.

Some people feel safer driving a full size car. With Ford, safety is more than a perception. It's a fact. It's the product of a commitment that has seen Falcon evolve into one of the safest cars on the road.

Falcon was the first Australian-built car with a driver's airbag fitted as standard equipment. A new generation ABS is also standard on Futura and available as an option on GLI.

Falcon Futura and GLI are equipped with a standard driver airbag. (Left front passenger airbag optional.) Sensors in the vehicle detect the severity of an impact. If the collision meets the criteria for deployment, the driver airbag and passenger airbag, if fitted, will inflate and be released.



The passenger compartment features side intrusion beams, and integrated front and rear crumple zones.



Falcon has 'best in class' roof crush strength.



Front seat belt lockers minimise pre-tension of seat belt webbing in extreme conditions. (Futura front seat belts are height adjustable.)

Futura's new generation Anti-Lock Braking System helps you to maintain steering control in most braking circumstances.



6FPAAAJGWA146173

Major vehicle components are marked with an exclusive Vehicle Identification Number.



Smartlock engine immobilisation and keyless entry on all Falcons.

When these accessories are fitted by your Authorised Ford Dealer before you take delivery, they're covered, reassuringly, by Ford's 3 year/100,000 km 'Bumper to Bumper' Warranty* – just like your new Falcon itself.

Your Authorised Ford Dealer can help you select from a wide range of Ford Approved Accessories that have been designed to add greater functionality, more protection or even a touch of personal flair to your new Falcon.



CRUISE CONTROL
(Standard on Futura)
Helps to maintain a constant pre-set speed. Disengages when brakes or clutch are applied.



BOOT LINER
(optional only)
Removable moulded boot liner helps to protect boot carpet from wear and soiling. Resistant to most chemical and liquid spills.



FRONT SUNVISOR
Adds an extra touch of style while helping to provide protection from heat and glare.



REAR SUNSHADE
Made from dark grey translucent acrylic and offers practical benefits with an extra splash of style.



CARPET MATS
Help protect your Falcon carpet from wear and soiling with heavy duty mats emblazoned with Ford logos.



SPORTS ROAD WHEELS
Add that extra touch of style and performance with these alloy wheels designed for Falcon.



1600 kg TOWBAR*
Designed to comply with Australian Design Rule (ADR 62) specification. (Rated at 1200 kg for manual vehicles.)



1600 kg HEAVY DUTY TOWBAR*
Addition of a load levelling hitch (purchased separately) increases capacity to 2300 kg. Designed to comply with ADR 62. Suitable for automatic vehicles only.



SECURITY SYSTEM
The only car alarm system approved by Ford. Designed to comply with Falcon's standard Smartlock keyless entry and engine immobilisation system.

ELECTRIC AERIAL

Extends when radio is switched on while travelling, or using keyless play. Retracts when cassette player is selected, audio system or ignition is switched off.

WAGON CARRY BARS WAGON ROOF RACK

Add extra carrying versatility to your Falcon wagon.

WAGON CARGO BARRIER

Helps to keep luggage in place in an emergency.

WAGON DUST DEFLECTOR

Especially designed for Falcon Wagon to help prevent dust from accumulating on the rear window and obscuring vision.

TRIP COMPUTER

Useful driving aid calculates data relating to speed and fuel consumption, including distance to empty, average speed, average fuel consumption, etc.

FIRE EXTINGUISHER

Important safety accessory. Supplied with mounting bracket.

DISABLED DRIVERS KIT

Makes driving easier for those with certain disabilities. Available free of charge with new vehicle purchase.

LOAD LEVELLING HITCH

(Suitable for automatic vehicles only.) Specially designed to suit the Ford heavy duty tow bar (to tow 2300 kg*).

AIR CONDITIONING

CFC-free unit provides relief from heat and rapid demisting.

*Subject to State and Territory regulations.



Falcon GLI fitted with the fully airbag compatible Smart Bull Bar, bonnet protector, headlamp guards, driver's weathershield, front and rear mud flaps, carry bars and rear louvre.

LET YOUR SPIRITS SOAR WITH TICKFORD

Tickford Vehicle Engineering, Ford's partner in performance-enhanced vehicles, offer these options. They're backed by the Ford 3 year/100,000 km 'Bumper to Bumper' Warranty* if fitted prior to delivery.



on petrol or LPG! Developed jointly by Ford and TVE and tuned specifically for Falcon, this LPG system is the only LPG fitment covered by the Ford 3 Year/100,000 km 'Bumper to Bumper' Warranty.* Available on automatic sedans and wagons.

Sports suspension.

Stiffer front and rear springs, sports tuned shock absorbers and bushes and revised wheel alignment.

16" wheels and tyres.

A choice of two 16" x 7" alloy wheel designs fitted with high performance Yokohama 510 series 225/50 VR 16 tyres for exceptional wet and dry road grip. (Available only with optional Sports Suspension.)

Momo steering wheel.

Sculpted leather bound steering wheel for the ultimate in feel and control. (Not available with cappuccino trim.)

LPG.

With this LPG system, Falcon delivers the same power

2300 kg rated tow pack*

(auto. transmission only).

Heavy Duty Towbar and Load Distributing Hitch, trailer wiring kit, revised turn signal flasher, transmission oil cooler.

Heavy duty tow pack*.

For those who already have a 2100 kg or 2300 kg Load Distributing Hitch. Heavy Duty Towbar (2300 kg rated when used with 2300 kg Load Distributing Hitch), trailer wiring kit, revised turn signal flasher, transmission oil cooler and a 1600 kg rated capacity plug-in tow ball mount.

* Subject to State and Territory regulations.

FORDCARE. OUR COMMITMENT TO YOUR SATISFACTION.



Fordcare is a whole range of programs, products and services designed to make Ford owners the most satisfied motor vehicle owners in Australia.

The well-being of your Ford is supported by these warranties and services:

**3 Year/100,000 km
'Bumper to Bumper' Warranty.***



Covers your Ford against defects in factory materials or workmanship for the first 3 years or 100,000 km - whichever occurs first. When fitted at or prior to the time of vehicle delivery, Ford Approved Accessories are also covered by the Ford 3 Year/100,000 km 'Bumper to Bumper' Warranty.

Five Year Perforation Corrosion Warranty.*

Covers the original vehicle's body against perforation corrosion for the first five years of its life.

Lifelong Panel Warranty.*



Covers replacement of outer body panels against perforation corrosion for the life of the vehicle.

Ford Customer Assistance Centre.



We're always happy to hear from you and you will find us responsive to your needs. **Customer Assistance Centre - Telephone 1800 333 306 (TOLL FREE), in Melbourne telephone 9359 7023.**

Ford Credit Financial Services.



Ford Leasing and Red Carpet Options are available to approved applicants of Ford Credit Australia Limited. Enquire at your Authorised Ford Dealer.

Fleet Communication Centre.



Our Fleet Communication Centre is available to assist fleet customers with information on Ford products and services. Telephone 1800 673 207.

Further information on these warranties and services may be obtained from your Authorised Ford Dealer.



*Conditions and exclusions apply. See your Authorised Ford Dealer for details.

Visit the Ford on the Internet. Our home page is located at: www.ford.com.au

This brochure is designed to provide you with a general introduction to the Ford Products (including available optional equipment) referred to, and should be read in conjunction with the latest specification sheet. Because of changes in conditions and circumstances Ford* reserves the right, subject to all applicable laws, at any time, at its discretion, and without notice, to discontinue or change the features, designs, materials, colours and other specifications and the prices of their products, and to either permanently or temporarily withdraw any such products from the market without incurring any liability to any prospective purchaser or purchaser. The latest specification sheet should be referred to for information on the availability, ordering and use of optional equipment. Always consult an authorised Ford Dealer for the latest information with respect to features, specifications, prices, optional equipment and availability before deciding to place an order. *FORD MOTOR COMPANY OF AUSTRALIA LIMITED. (A.C.N. 004 116 223) Registered Office: 1735 Sydney Road, Campbellfield, Victoria 3061, Australia. Printed April 1997. FCL 6622

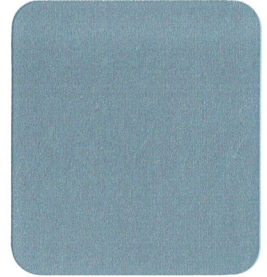


FALCON & FAIRMONT

COLOUR RANGE

Gloss

Prestige



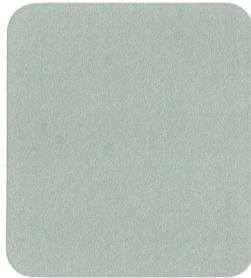
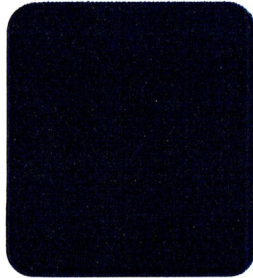
Dynamic White

Arctic Blue

Sparkling Burgundy

Mocha Foam

Mercury

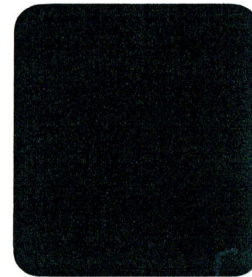
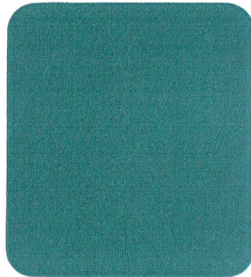
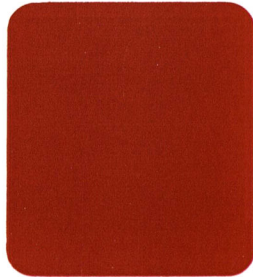


Hot Chilli Red

Navy Blue

Alaskan Frost

Gunmetal



Regency

Bermuda Green

Heritage Green

COLOUR AND TRIM COMBINATION EL SERIES

EXTERIOR COLOUR \ INTERIOR COLOUR	FALCON GLi SEDAN & WAGON	FUTURA SEDAN & WAGON	FALCON XR6 & XR8 SEDAN	FAIRMONT SEDAN & WAGON	FAIRMONT GHIA SEDAN	FALCON GLi UTE	OUTBACK UTE	FALCON S UTE	FALCON VAN	FALCON XR6 UTE
	MAKO GREY	MAKO GREY CAPPUCCINO†	MAKO GREY	MAKO GREY CAPPUCCINO†	MAKO GREY CAPPUCCINO	SLATE	SLATE	SLATE	SLATE	SLATE
GLOSS RANGE										
DYNAMIC WHITE	✓	O O	✓	O O	O O	✓	✓	✓	✓	✓
HOT CHILLI RED	✓	✓ O	✓			✓	✓	✓	✓	✓
PRESTIGE RANGE (*)										
SPARKLING BURGUNDY				O ✓	O ✓					
BERMUDA GREEN	✓	✓				✓	✓	✓		
ARCTIC BLUE	✓	✓		✓	✓	✓	✓	✓		
REGENCY	✓	O ✓	✓	O ✓	O ✓			✓		✓
GUNMETAL	✓	✓ O		✓ O	✓ O			✓		✓
ALASKAN FROST	✓	✓		✓	✓	✓	✓	✓		
MOCHA FOAM		✓		✓	✓					
NAVY BLUE	✓	✓ O	✓	✓ O	✓ O			✓		✓
HERITAGE GREEN	✓	O ✓	✓	O ✓	O ✓			✓		✓
MERCURY	✓	✓		✓	✓	✓	✓	✓		

- † = Cappuccino not available on Fairmont Wagon or Manual Futura
- O = Available combination
- ✓ = Recommended combination
- (*) = Available on Falcon GLi, and Falcon Utility GLi/S/Outback at extra cost

Interior Trim: Falcon GLi Sedan, Wagon – Sonnet/Hayman Cloth
 Fairmont Sedan, Wagon – Fresco/Nubuck Velour
 Fairmont Ghia – Leather Interior Trim
 – Optional Sterling Circular/Velour
 Falcon Futura Sedan, Wagon – Aerial/Pinoak Cloth
 Falcon XR6, XR8 – Sabre/Raceway Cloth
 Falcon GLi/Outback/Utility and Van – Tivoli/Saville Cloth
 Falcon S Utility – Olympiad/Mottled Plain Cloth
 Falcon XR6 Utility – Tempo/Chaser

PLEASE NOTE: The paints, colours, trims, combinations and information described depicted and referred to in this selector are to be used only as a general guide in the selection of a vehicle. Vehicle paint colours will differ in varying degrees from those depicted herein.

Ford Motor Company of Australia Limited reserves the right at any time and without notice to discontinue or change the specifications descriptions colours and designs of the paints, colours, trims and combinations thereof as described and referred to herein, to add or delete any paint colour, trim or combination thereof to or from the range described or referred to herein and to temporarily suspend or restrict the use of any paint colour, trim or combination thereof listed or referred to herein without incurring any liability whatsoever for so doing.

Always consult your Authorised Ford Dealer for the latest information on the availability of paints, colours, trims and combinations before deciding to place an order for a vehicle.

Standard Equipment: Falcon GLi Sedan and Wagon Falcon Futura Sedan and Wagon

FEATURES	Falcon GLi Sedan	Falcon GLi Wagon	Falcon Futura Sedan	Falcon Futura Wagon	FEATURES	Falcon GLi Sedan	Falcon GLi Wagon	Falcon Futura Sedan	Falcon Futura Wagon	FEATURES	Falcon GLi Sedan	Falcon GLi Wagon	Falcon Futura Sedan	Falcon Futura Wagon
MECHANICAL*					INTERIOR (continued)					INTERIOR (continued)				
4.0 litre engine with multipoint electronic fuel injection and computer torque control	•	•	•	•	Driver (continued)					Seating (continued)				
5 speed manual transmission	•	•	•	•	Two speed front windshield wipers with road speed sensitive variable intermittent demand wash/wipe and demand wipe feature			•	•	Driver's seat height adjustment and adjustable thigh support	•	•	•	•
4 speed electronically controlled floor automatic transmission with lock-up torque converter, power and economy modes and overdrive				•	Rear fixed intermittent wiper with demand wash/wipe and auto wiper, activated when in reverse gear with front wipers operating		•	•	•	Vertically adjustable lumbar support for driver and passenger	•	•	•	•
Electronic engine control (EEC-V) system	•	•	•	•	Rear window demister with timed automatic switch off feature					Doors trimmed in vinyl with Sonnet cloth covered insert	•	•	•	•
Short and long arm, long spindle front suspension	•	•	•	•	Full tinted laminated windshield with tinted band		•	•	•	Doors trimmed in vinyl with Pinoak cloth covered insert	•	•	•	•
Watts link rear suspension	•	•	•	•	Smart tint UPF 15+ side and rear glass		•	•	•	Moulded cloth covered headlining	•	•	•	•
Hotchkiss rear suspension	•	•	•	•	Driver air bag		•	•	•	Front inertia reel seat belts with "belt lockers"	•	•	•	•
Front stabiliser bar	•	•	•	•	Front power windows		•	•	•	Adjustable B pillar seat belt anchorage	•	•	•	•
Rear stabiliser bar	•	•	•	•	Power window time delay after key off		•	•	•	Rear inertia reel seat belts for all passengers	•	•	•	•
Four wheel disc brakes with asbestos free pads	•	•	•	•	Deluxe soft feel steering wheel		•	•	•	Rear inertia reel seat belts and adjustable rear centre lap belt	•	•	•	•
Anti-lock braking system (ABS)	•	•	•	•	Deluxe soft feel steering wheel, incorporating cruise control		•	•	•	Colour keyed seat belts	•	•	•	•
Power assisted rack and pinion steering	•	•	•	•	Adjustable rake and reach steering column		•	•	•	Cabin Comfort				
* For available optional equipment see reverse side					Prismatic day/night interior rear view mirror		•	•	•	Electrically adjustable exterior rear view mirrors	•	•	•	•
					Floor mounted park brake handle		•	•	•	Passenger vanity mirror	•	•	•	•
					Colour keyed switches and buttons		•	•	•	Driver and passenger vanity mirror	•	•	•	•
EXTERIOR					Digital clock in radio/cassette unit		•	•	•	Large centre console with centre armrest and cup holder	•	•	•	•
Grey grille bar	•	•	•	•	Digital clock in instrument panel display		•	•	•	Gathered seat back map pockets	•	•	•	•
Body colour grille bar	•	•	•	•	Driver's left foot footrest		•	•	•	60/40 split fold down rear seat back rest	•	•	•	•
Body colour exterior door handles	•	•	•	•	Ignition lock illumination		•	•	•	Fold out rear seat armrest	•	•	•	•
Body colour front/rear bumpers	•	•	•	•	Warning lights: high beam, rear window demister, turn signal/hazard, alternator, lights on, park brake on, brake failure, seat belt, ABS, Air Bag, high temperature, Smartlock		•	•	•	Front door map pocket	•	•	•	•
Black bodyside protection mouldings	•	•	•	•	Low engine coolant warning light		•	•	•	Carpeted passenger and luggage compartment floor	•	•	•	•
Body colour bodyside protection mouldings	•	•	•	•	Normal/economy mode auto transmission indicator light		•	•	•	Interior dome light	•	•	•	•
Grey rear applique	•	•	•	•	Service interval indicator		•	•	•	Interior light with map reading lamps	•	•	•	•
Body colour rear applique	•	•	•	•	Gauges: speedometer, odometer, tripmeter, fuel level, water temperature and tachometer		•	•	•	Remote key operated illuminated entry system	•	•	•	•
P205/65 HR15 steel belt radial ply tyres	•	•	•	•	Audible warning chimes: lights on, high engine temperature, turn signal		•	•	•	Rear reading lamps	•	•	•	•
15" x 6.0" steel wheels	•	•	•	•	Cruise control		•	•	•	Luggage compartment lamp	•	•	•	•
16 spoke wheel cover	•	•	•	•	Remote fuel filler release		•	•	•	Load area lamp	•	•	•	•
12 spoke clear coated wheel cover	•	•	•	•	Remote boot release		•	•	•	Dual intensity instrument panel illumination	•	•	•	•
Polycarbonate halogen headlamps with integrated indicator and park lamps	•	•	•	•	Standardised child seat anchorage bolt fitted		•	•	•	Illuminated front cigar lighter and ashtray	•	•	•	•
Black foldaway exterior rear view mirrors	•	•	•	•	Seating					Illuminated and lockable glovebox	•	•	•	•
Body coloured foldaway exterior rear view mirrors	•	•	•	•	Seats trimmed in Sonnet cloth with Hayman cloth insert		•	•	•	Power door locks with remote keyless entry	•	•	•	•
High mounted stop lamp	•	•	•	•	Seats trimmed in Pinoak cloth with Aerial cloth insert		•	•	•	Power door locks with keyless entry including wagon tailgate lock	•	•	•	•
Black licence plate lamp	•	•	•	•	Driver and passenger seat fore and aft adjustment		•	•	•	Childproof rear door locks	•	•	•	•
Body coloured licence plate lamp	•	•	•	•	Driver and passenger seat infinitely adjustable recline		•	•	•	Integrated grab handles and coat hooks	•	•	•	•
Rear glass graduated sunshade band	•	•	•	•	Front and rear headrests		•	•	•	Coat hooks	•	•	•	•
Wide-angle left hand rear view mirror	•	•	•	•						Electronic tuning 20 watt AM/FM stereo radio/cassette with four speakers, auto reverse, security code, one hour keyless play and integrated clock	•	•	•	•
Deletion of left hand front door exterior key lock for improved security	•	•	•	•						Electronic tuning 40 watt AM/FM stereo radio/cassette with six speakers, auto reverse, auto scan, security code, one hour keyless play	•	•	•	•
										Mobile phone wiring including radio mute	•	•	•	•
INTERIOR														
"Smart Lock" electronic engine immobilisation and keyless entry system	•	•	•	•										
High security locking system featuring "Tibbe" locks on doors, ignition and boot/liftgate, recessed door lock buttons and strengthened steering column lock housing	•	•	•	•										
Battery saver feature	•	•	•	•										
Driver														
Two speed front windshield wipers with fixed intermittent setting and demand wipe feature	•	•	•	•										
Dual jet windshield washers	•	•	•	•										

HAVE YOU DRIVEN A FORD... LATELY?

FORD FALCON GLI/FUTURA



Specifications

FORD FALCON GLI AND FUTURA SEDAN AND WAGON

Engine	4.0 litre 16 MP EFI	5.0 litre V8 MP EFI
Bore & Stroke mm	92.26 x 99.3	101.6 x 76.2
Cylinder Head	OHC	OHV
	Aluminium Alloy	Cast Iron
Displacement cc	3904	4942
Compression Ratio	9.3:1	9.0:1
Fuel System	Electronic fuel injection controlled by EEC-V engine management system	
Fuel Required	Regular unleaded	Regular unleaded
Max Power DIN kW/rpm	157/4900	165/4500
Max Torque Nm/rpm	357/3000	388/3000

Battery Rating	400
Cold cranking amperes	95 minutes
Reserve capacity	53
Amperes hour	

Suspension	
Front	• Short and Long Arm, Long Spindle (SLALS) design • Single rate coil springs • Twin tube telescopic shock absorbers mounted co-axially within the coil spring • Stabiliser bar
Rear	SEDAN: • Rigid axle • 4 trailing arms with Watts Linkage • Single rate coil springs WAGON: • Rigid axle • Leaf springs • Twin tube telescopic shock absorbers

Brakes	
FRONT:	Power assisted ventilated disc : 287mm
REAR:	Power assisted disc : 299mm

Dimensions	Sedan	Wagon
Exterior (mm)		
Overall length	4906	5042
Overall height	1453	1529
Overall width (l)	1861	1856
Wheelbase	2791	2923
Front track	1566	1566
Rear track	1547	1547
Front overhang	919	919
Rear overhang	1196	1201
Interior (mm)		
Front headroom	974	982
Front legroom	1081	1081
Front shoulder room	1518	1518
Front hiproom	1486	1486
Rear headroom	975	1039
Rear legroom	992	992
Rear shoulder room	1512	1517
General		
Kerb weight (kg) (a)	1536	1600
Luggage capacity (litrts)	468	1473 (b)/2595 (c)
Fuel tank capacity (litrts)	68	72
Min turning circle (m) - diameter	10.9	11.3

Transmission/Ratios	5 Speed Manual 16	4 Speed Auto V8	4 Speed Auto 16
Gear Ratios			
1st	3.25	2.39	2.39
2nd	1.99	1.45	1.45
3rd	1.29	1.00	1.00
4th	1.00	0.68	0.68
5th	0.72	—	—
Reverse	3.15	2.09	2.09
Final Drive Ratio	3.23 Sedan	3.23	3.08 Sedan
	3.23 Wagon		3.23 Wagon

Selected Fuel Consumption Data	City Cycle (l/100km)	Highway Cycle (l/100km)
4.0 L MP EFI manual GLi Sedan	12.0	7.6
4.0 L MP EFI auto GLi Sedan	12.5	7.4
4.0 L MP EFI manual GLi Wagon	12.5	7.6
4.0 L MP EFI auto GLi Wagon	12.5	7.6
5.0 L MP EFI auto GLi Sedan	14.5	9.0
4.0 L MP EFI manual Futura Sedan	12.0	7.6
4.0 L MP EFI auto Futura Sedan	12.5	7.4
4.0 L MP EFI auto Futura Wagon	12.5	7.6
5.0 L MP EFI auto Futura Sedan	14.5	9.0

These figures are obtained from controlled laboratory tests conducted by Ford Motor Company of Australia Limited to Australian Standard AS2677:1986 and are provided to assist you in comparing the fuel consumption of Falcon with other vehicles. The actual fuel consumption you achieve will depend, however, on many factors, including your driving habits, the prevailing conditions and your vehicle's equipment, condition and use.

Options

Optional Equipment (Options are at extra cost unless otherwise stated)

Option	GLi Sedan	GLi Wagon	Futura Sedan	Futura Wagon
Car alarm (k)	OPT	OPT	OPT	OPT
CFC free air conditioning	OPT	OPT	OPT	OPT
Centafold seat (d)	OPT	OPT	N/A	N/A
Heavy duty suspension (f)	OPT	OPT	N/A	N/A
1600 kg Rated Tow Pack (e)	OPT	OPT	OPT	OPT
Heavy Duty Tow Pack with 1600 kg rated ball mount (e)	OPT	OPT	OPT	OPT
2300 kg Tow Pack (e)	OPT	OPT	OPT	OPT
Limited slip differential	OPT	OPT	OPT	OPT
Sports suspension	OPT	OPT	OPT	OPT
LPC (g)	OPT	OPT	OPT	OPT
16" alloy 5-spoke wheels with Yokohama P225/50 VR16 tyres (h)	OPT	OPT	OPT	OPT
16" alloy closed face wheel with Yokohama P225/50 Z16 tyres (h)	OPT	OPT	OPT	OPT
Mono steering wheel 4-spoke Prestige paint (i)	OPT	OPT	NCO	NCO
Vinyl trim (j)	OPT	OPT	N/A	N/A
Anti-lock braking system (ABS)	OPT	OPT	STD	STD
Cruise control (m)	OPT	OPT	STD	STD
6 Disc boot mounted CD player/mid series radio	N/A	N/A	OPT	N/A
15" alloy wheels	OPT	OPT	OPT	OPT
Passenger air bag	OPT	OPT	OPT	OPT
Cargo carrier	N/A	OPT	N/A	OPT

Engine/Transmission Combinations

Engine/Transmission	GLi Sedan	GLi Wagon	Futura Sedan	Futura Wagon
4.0 litre Multipoint EFI 5 speed manual	STD	STD	STD	N/A
4.0 litre Multipoint EFI 4 speed floor auto	OPT	OPT	OPT	STD
4.0 litre Multipoint EFI 4 speed column auto	OPT	OPT	N/A	N/A
5.0 litre Multipoint EFI 4 speed floor auto	OPT	OPT	OPT	OPT

Automatic transmission is a 4 speed electronically controlled unit with lock-up torque converter, normal/economy modes and overdrive.

Towing Capacity (Subject to applicable legislation and tow bar capacity)

Transmission	Ford Approved 1600 kg Rated Tow Pack (Flat Tongue Bar)	Ford Approved Heavy Duty Tow Pack (with 1600 kg Rated Ball Mount) (Square Tube Bar)	Ford Approved 2300 kg Tow Pack (with Load Distributing Hitch) (Square Tube Bar)
5 Speed Manual	1200 kg *	N/A	N/A
4 Speed Auto	1600 kg *	1600 kg *	2300 kg *

* Without the Ford approved Tow Pack, the towing capacity is 500 kg.

STD Standard equipment. OPT Optional at extra cost. N/A Not available. NCO No option.

About this specification sheet. This sheet is designed to provide you with selected specification data for the Ford Products which have been described in a general way in the relevant brochure. Because of changes in conditions and circumstances Ford* reserves the right, subject to all applicable laws, at any time, at its discretion, and without notice to discontinue or change the features, designs, materials, colours and other specifications and the prices of its products, and to either permanently or temporarily withdraw any such products from the market without incurring any liability to any prospective purchaser or purchaser. Because of variations which occur in manufactured products, all capacities, measurements, dimensions and weights quoted in the relevant brochure and this specification sheet should be taken as approximate only. Always consult an Authorised Ford Dealer for the latest information with respect to features, specifications, prices, optional equipment and availability before deciding to place an order.

*FORD MOTOR COMPANY OF AUSTRALIA LIMITED
(A.C.N. 004 116 223)
Registered office:
1735 SYDNEY ROAD, CAMPBELLFIELD, VICTORIA, 3061.

Footnotes

- (a) Approximate kerb weight for a Falcon GLi fitted with 4.0 litre MP EFI engine and 5 speed manual transmission.
- (b) With rear seats upright.
- (c) With rear seats folded down.
- (d) The Centafold front seat with seating for 3 people is only available with automatic column shift transmission and is mandatory on Falcon GLi when this transmission is specified. The Centafold seat does not have a lumbar support adjustment or a seat cushion height adjustment and the centre console is deleted.
- (e) The Tow Packs are fitted to the vehicle by or for Ford and provide the specified towing capacities when used in accordance with the instructions in the Ford Owner's Manual. Each Tow Pack consists of:
 - Tow bar
 - Hitch and/or ballmount
 - Wiring harness with 'flat' 7-pin electrical connector
 - Towing turn signal flasher
 - Supplementary transmission cooler (automatic transmissions only)
 Note: Other items such as the caravan or trailer braking system, tow ball, safety chains, etc. are required for the attachment of a caravan or trailer to the towbar or hitch, are not supplied as part of the Tow Pack and must be purchased at extra cost or be supplied by the purchaser of the vehicle. An accessory towbar is also available from your Authorised Ford Dealer, fitting to be arranged by the purchaser. If the vehicle is to tow a gross weight of more than 500kg the appropriate Ford Approved Tow Pack must be fitted. Consult your Authorised Ford Dealer for the latest information with respect to the specifications and the availability of the accessory towbar. The actual towing capability and performance of a vehicle will depend on many factors including the suitability of the caravan, trailer, etc. the condition of the vehicle, the vehicle load, the vehicle specifications, weather conditions, road gradient, terrain and other prevailing conditions.
- (f) The heavy duty suspension option consists of heavy duty springs, heavy duty shock absorbers and increased rear ride height (approximately 20mm sedan 6mm wagon).
- (g) Available on 6 cylinder auto only.
- (h) Available only in conjunction with sports suspension.
- (i) Consult the Ford colour selector or your Authorised Ford Dealer to determine which colours are available in the prestige paint range.
- (j) Available only in conjunction with automatic column shift transmission and only with Makro Mist interior.
- (k) The car alarm is available as a Dealer fitted option.
- (l) Excluding exterior mirrors.
- (m) Cruise control is not available with centafold seat option.

