



Tercel



Corolla



Camry



Avalon



Previa



Paseo



Celta



Supra



RAV4



4Runner



Land Cruiser



Tacoma



T100



I love what you do for me

PF7-021 (6/96) 00617-07317

Litho in U.S.A. (475M)

©1996 Toyota Motor Sales, U.S.A., Inc.

1997 RAV4



TOYOTA



RAV4 2-Door shown in Ocean Mist Metallic; RAV4 4-Door shown in Alpine Silver Metallic. Both include optional equipment.

When you buy a Toyota product, you can count on excellent quality, reliability and peace of mind—the foundation upon which we have built our reputation. But we believe that peace of mind should not be limited to our products. You can expect the same confidence in our services as you do in our vehicles—from the moment you consider a Toyota and throughout your entire ownership experience.

And it all begins with information. If you would like to learn more about our products, or want to share comments and opinions, you can contact our **Toyota Customer Assistance Center** at 1-800-331-4331. Or you may want to visit @Toyota, our informative interactive website (<http://www.toyota.com>).

And once you've studied the facts, your choice should be easy...as easy as purchasing a Toyota. With Toyota Motor Credit Corporation, you can count on low monthly payments, 24- to 60-month loans and competitive finance rates.

What's more, if you purchase **Toyota's Guaranteed Auto Protection**, we will help you with your lease or loan payments if your vehicle is lost to an accident or theft. And **Toyota Credit Life Insurance and Credit Disability Insurance** can help protect your family's financial security by paying your lease or loan payments if you're not able to do so.

And when we hand you the keys to your new Toyota, you'll be getting the support of more than **1,195 full-service dealerships** with state-of-the-art service centers staffed by Toyota-trained technicians and a parts department that's linked to our enormous new distribution center. So if you should ever need parts, don't worry; we'll get them fast.

Of course, you can expect more from your vehicle *and* its parts when you follow a regular schedule of preventive maintenance. And the **Toyota Auto Care** program makes it easy and economical with scheduled oil and filter changes, 19-point inspections and 24-hour roadside assistance—all available from your participating Toyota dealer.

However, if something should go wrong with your new Toyota, rest assured. It's protected by **excellent warranties** (see page 26 for details) and you can extend your protection with Toyota Extra Care, our **factory-backed vehicle service agreement**.

For nearly 40 years, we at Toyota U.S.A. and our dealer network have been an integral part of America's economy and social fabric. However, we won't be resting on our laurels. Instead, we have dedicated ourselves to your peace of mind...with products of the highest quality and reliability. And services to match. **From beginning to end, you can expect the best from Toyota.**



4
THE TOYOTA COMMITMENT

Dedicated to your complete satisfaction.

5
OUR REPUTATION

Toyota quality and reliability.

6
STYLING

There's nothing else quite like it, outside...

11
INTERIOR

...or in.

14
VERSATILITY

How'd they get so much room in such a compact package?

17
PERFORMANCE

Fun, maneuverable, smooth.

18
SAFETY

Designed for the unexpected.

20
ENGINEERING

Exposed — RAV4 seen through X-ray glasses.

23
PERSONALIZATION

Are you the Rugged or the Active type?

25
COLORS AND FABRIC

Plenty of choices.

25
OPTIONS AND ACCESSORIES

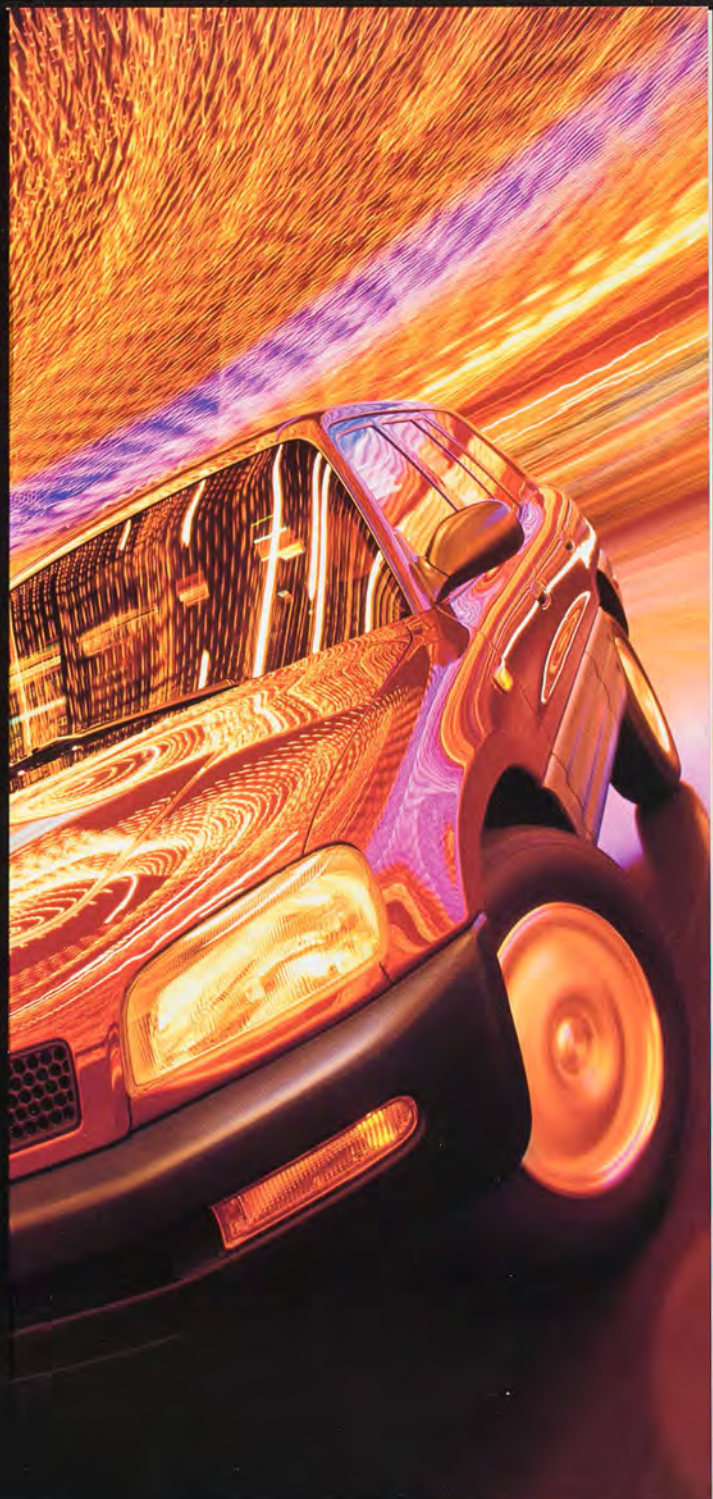
Decisions, decisions.

26
WARRANTIES AND FEATURES

We've got you covered.

27
SPECIFICATIONS

All you need to know.



When you buy a Toyota product, you can count on excellent quality the foundation upon which we have built our reputation. But we believe we are not limited to our products. You can expect the same confidence in our products—from the moment you consider a Toyota and throughout your ownership.

And it all begins with information. If you would like to learn more about our products, or want to share comments and opinions, you can contact our Customer Assistance Center at 1-800-331-4331. Or you may write to us at Toyota, our informative interactive website (<http://www.toyota.com>).

And once you've studied the facts, your choice should be easy. With Toyota Motor Credit Corporation, you can choose from monthly payments, 24- to 60-month loans and competitive financing.

What's more, if you purchase Toyota's Guaranteed Auto Protection, you can stop paying your lease or loan payments if your vehicle is lost to an accident. And Life Insurance and Credit Disability Insurance can help protect you from paying your lease or loan payments if you're not able to do so.

And when we hand you the keys to your new Toyota, you'll be able to visit one of our 1,195 full-service dealerships with state-of-the-art service centers, parts departments and a parts department that's linked to our enormous new distribution network. If you ever need parts, don't worry; we'll get them fast.

Of course, you can expect more from your vehicle and its parts. With our comprehensive schedule of preventive maintenance. And the Toyota Auto Care program that includes scheduled oil and filter changes, 19-point inspections and 24-hour roadside assistance from your participating Toyota dealer.

However, if something should go wrong with your new Toyota, we stand behind our excellent warranties (see page 26 for details) and you can extend your protection with our Care, our factory-backed vehicle service agreement.

For nearly 40 years, we at Toyota U.S.A. and our dealer network have been a part of America's economy and social fabric. However, we won't stop here. We have dedicated ourselves to your peace of mind and your satisfaction with quality and reliability. And services to match. For more information, expect the best from Toyota.



RAV4

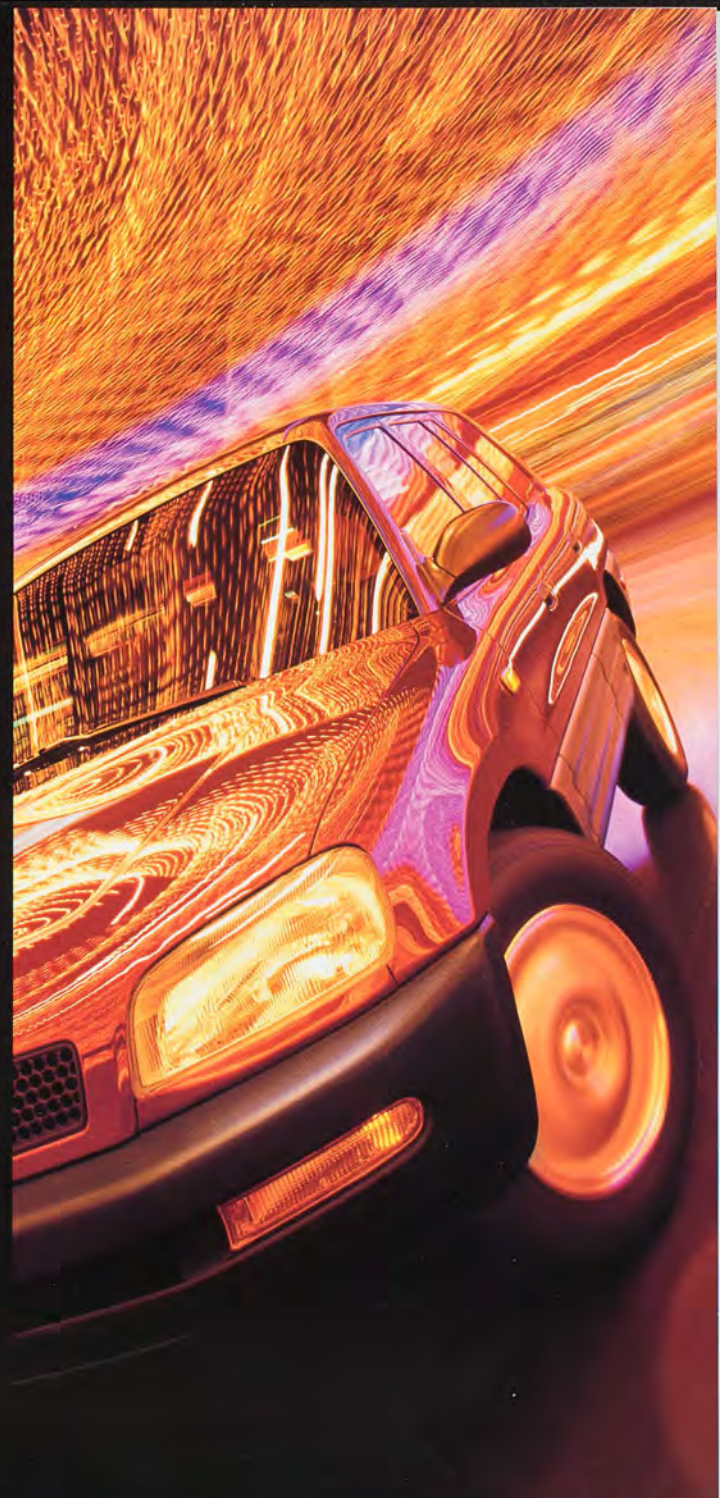
QUALITY AND RELIABILITY

OUR REPUTATION

Here in the U.S., the RAV4 is barely one year old but it's backed by years of Toyota tradition—a long history of quality and reliability. And, as one would expect, the RAV4 respects tradition. The evidence is obvious.

Fit and finish are exceptional. The space between body panels is practically nonexistent. And the paint has the deep luster of a show car. Inside, the materials are high quality and according to *Car and Driver*, "the whole thing is stitched together as tightly as a baseball."* You can feel the quality and reliability in the short, crisp throws of its 5-speed shifter, in the quick, precise response of its rack-and-pinion steering and the quiet, solid ride of its strong unitized body and fully independent suspension.

But words can only do so much. To appreciate the fruits of this time-honored tradition, you've got to drive a RAV4.



There's nothing else quite like it. It's not just a car, not just a sport utility vehicle.



It's in a category by itself. With front-wheel

drive or full-time 4WD, two doors or four, tall tires on optional alloy wheels, large sculpted headlamps and more curves than a mountain road. Big windows, tall roof, broad body. And on the lower half, a wide band of cladding defies dings from rocks, doors and shopping carts. *Car and Driver* says: "Proportionately huge tires, positioned at the extreme edges of the body, give the RAV4 a tough and muscular look absent in any other mini-SUV."* It's the RAV4 and it's everything you want it to be.

**Car and Driver*, April 1996.



RAV4's fresh styling is appropriate attire for any occasion.

RAV4 is ready to meet the needs of an active lifestyle. On the 2-Door, you can opt for dual sunroofs, or a power moonroof on the 4-Door.



Unique 5-spoke aluminum alloy wheels, wide, low-profile tires, a front suspension brace and integrated fender flares are available on 4WD models. The brace stiffens the chassis for better handling and more responsive steering.



RAV4 4-Door shown in Purple Storm Metallic with optional equipment.



RAV4 4-Door shown in Prussian Red Pearl with optional equipment.

Inside, you'll sit up high in sporty, comfortable seats. *Car and Driver* loved them: They "remind me of those in the Acura NSX—firmly padded in all the right places."* And all four seat-backs recline...all the way (could spark a resurgence in drive-in movies). Throughout, RAV4 is intelligently planned. It's sleek and maneuverable on the outside and surprisingly roomy within, where you'll find lots of usable space—seating for four (2-Door) or five (4-Door), plenty of cargo room and storage places for all your little things. *Car and Driver* said, "It's automotive win-win if ever I saw one."



Optional cruise control, power windows and door locks** and standard dual overhead maplights put convenience at your fingertips.

RAV4 2-Door interior shown with optional equipment.

**Car and Driver*, April 1996.
**Power windows and door locks are part of the optional Upgrade Package.



RAV4 4-Door interior shown with optional equipment.



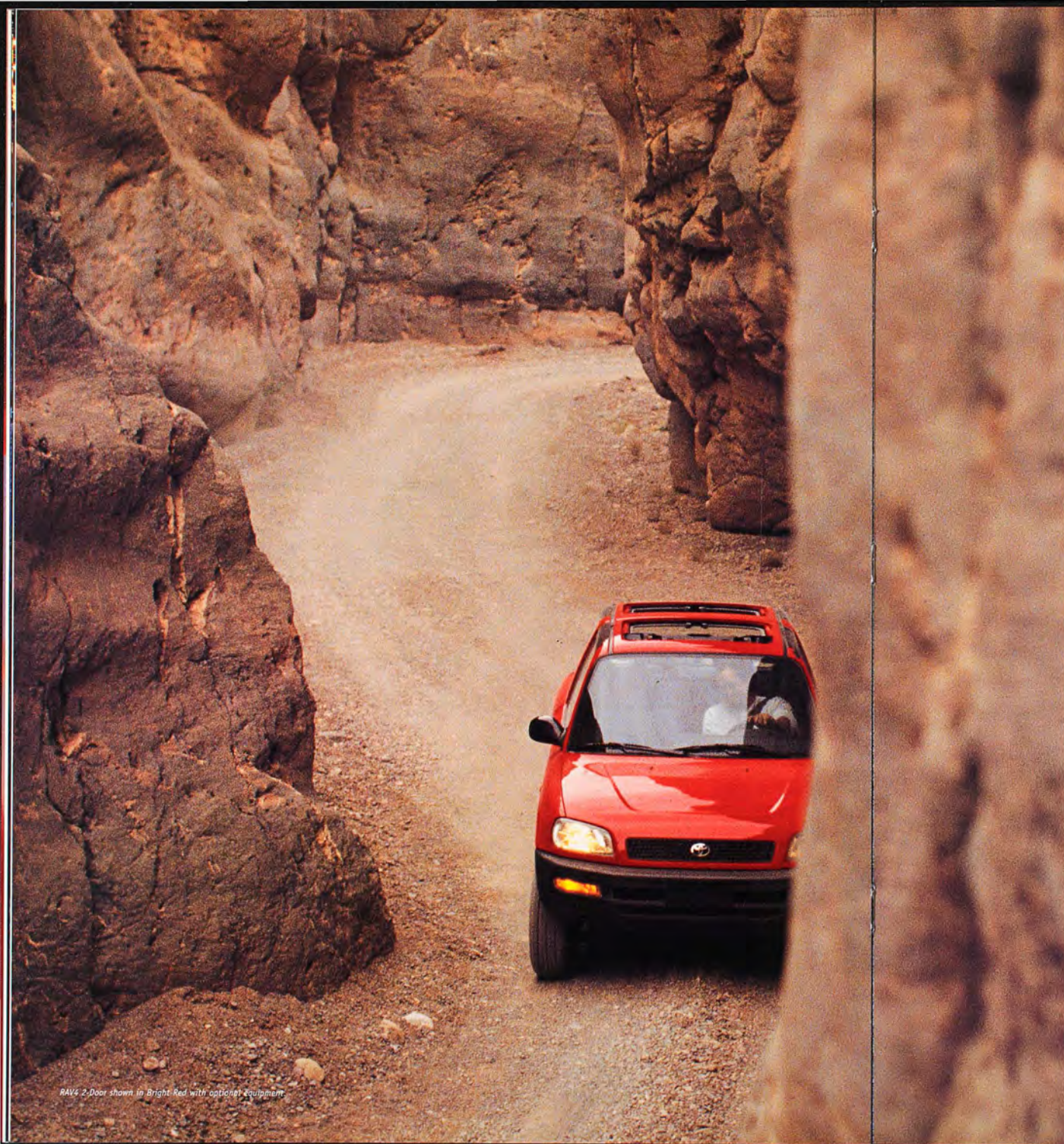
To illustrate the versatility of the RAV4, we conducted a timed scavenger hunt with two couples and two RAV4s—a 2-Door and a 4-Door. The 2-Door guys used some ingenuity and one of their optional sunroofs to accommodate a totem pole. And by folding down the rear seats, they increased cargo space to 34.7 cu. ft.—enough room for a thigh toner and a life-size piggy bank. Seats-up in the 4-Door makes 26.8 cu. ft. of space and a spacious 57.9 cu. ft. with rear seats folded down. Or, when you need to carry passengers and cargo, you can do so by simply folding down one rear seatback. And the available roof rack holds even more. Treasure hunters and other cargo carriers will also appreciate the convenience of the RAV4's wide cargo opening and low liftover height. Scavengers, start your engines.



To maximize space for Speedy and his coveted bones, we folded the rear seats flat against front seatbacks. The large rear door opens wide for easy loading and unloading. The Rottweiler, however, is Speedy's problem.



RAV4 4-Door shown in Purple Storm Metallic; RAV4 2-Door in Sequoia Green Metallic. Both include optional equipment.



RAV4 2-Door shown in Bright Red with optional equipment.

PERFORMANCE



"The RAV is quick and agile in traffic and hums along as straight and steady as a cruise missile on the freeway."

"**R**ally car performance, Camry-like quality."* In a recent comparison of four mini sport utility vehicles, *Car and Driver* chose the RAV4 over the Geo Tracker LSI, the Suzuki X-90 and even the second-place Jeep Wrangler Sport. "The RAV4," they said, "was clearly the most fun to drive of the bunch....On pavement, where these vehicles spend most of their time, the RAV was clearly superior. On semi-tough stuff like washboard roads and dirt trails, the RAV equaled the Jeep in performance and surpassed it in comfort....Of all these mini-utes, it is the one that a person could own as an only car without regret or compromise." Cool.

**Car and Driver*, July 1996.



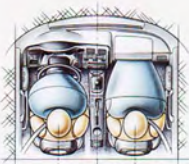
RAV4's available full-time 4WD is a big help when the road suddenly turns slippery.

Front-wheel drive or full-time 4WD, the RAV4's exceptional ride and handling benefit from its fully independent suspension.





Whether it's a runaway popcorn cart or a little old lady with an attitude, RAV4 is designed with your safety in mind. Large power-assisted front ventilated disc/rear drum brakes with optional 4-wheel ABS help assure quick, skid-resistant stops. A responsive 120-hp twin-cam engine, quick power-assisted rack-and-pinion steering and precise handling can help you get out of harm's way. And when that's not possible, it's nice to know that you have dual air bags, side-door impact beams and strategically placed impact-absorbing structural reinforcements. Together, they all add up to something you won't find on the window sticker, yet it's standard equipment on every Toyota. And that's peace of mind.



RAV4's driver-side and front passenger-side air bags are a Supplemental Restraint System (SRS) designed to inflate in a severe frontal collision. In all other accidents, seatbelts offer primary protection, and the air bags will not inflate. Do not sit or place objects close to an air bag. To minimize the risk of severe injury or death in all types of crashes, seatbelts must be worn at all times by all vehicle occupants. Do not use rearward-facing child seat in any front-passenger seat. The force of a deploying air bag SRS may cause serious injury. For more information on air bags and instructions on child seat usage, see the Owner's Manual.



Tall, wide windows and a high seating position produce 82 degrees of frontal visibility, and that's a big plus at the drive-in or on the road.



RAV4 4-Door shown in Purple Storm Metallic with optional equipment.

A liquid-filled engine mount helps reduce noise, vibration and harshness.

Side-door impact beams help protect driver and passengers in certain types of lateral collisions.

Galvannealed steel sheets resist rust for a long life.

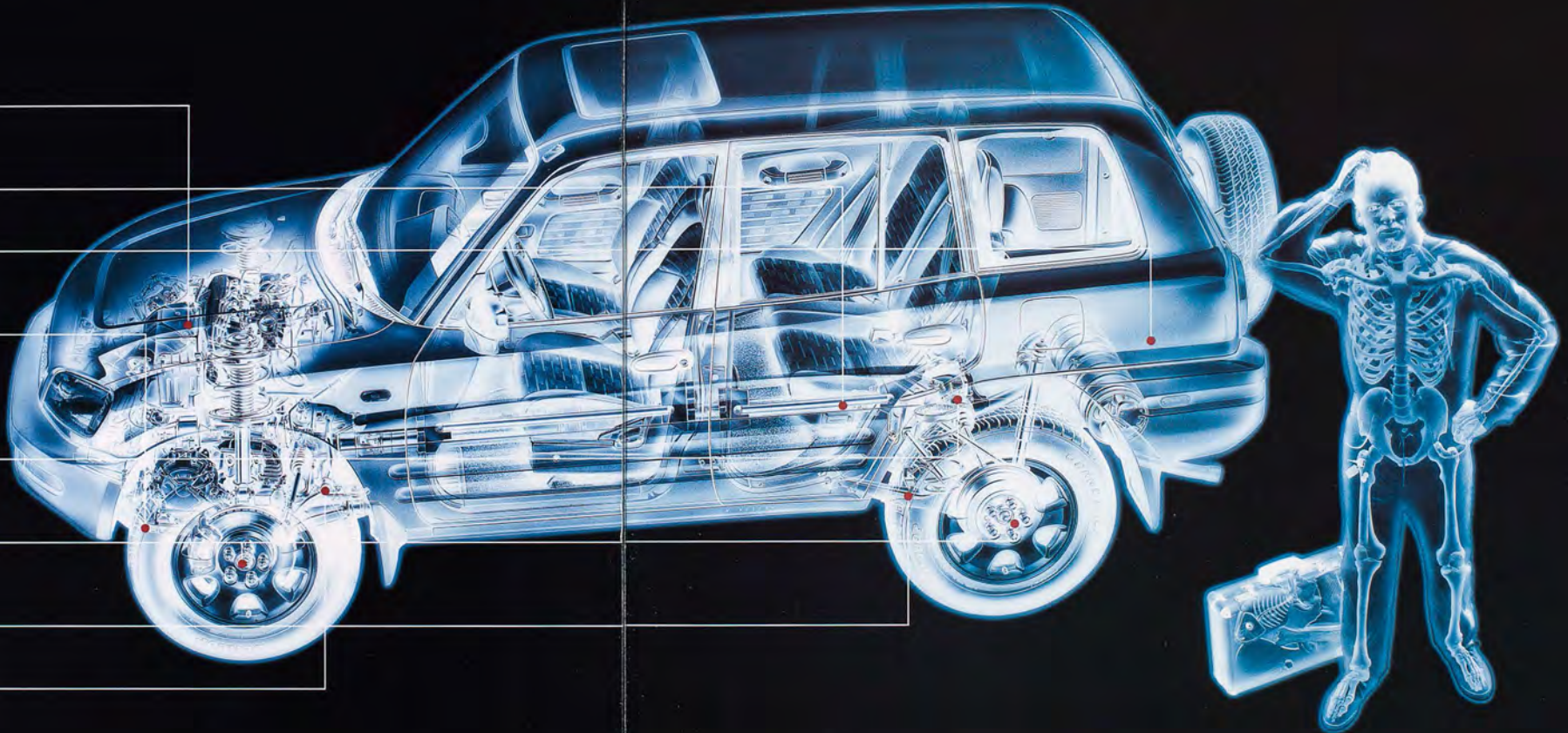
Front and rear anti-vibration sub-frames contribute to a quiet, smooth ride by reducing noise and vibration.

An available Torsen[®] limited-slip differential sends power to the rear wheel with the most traction. For snow and off-roading, it's a gotta-have (4WD only).

Power-assisted front ventilated disc and rear drum brakes provide confident, fade-resistant stops.

A double-wishbone independent rear suspension brings sure-footed handling and a comfortable ride.

A ball-joint-type stabilizer bar helps minimize body lean in the corners.



A pair of X-ray glasses exposes the RAV4 for what it really is: A model of innovation. Anti-vibration sub-frames, a triple-jointed drive shaft and generous use of sound-dampening panels contribute to RAV4's smooth, comfortable ride, as do the fully independent front and rear suspensions. RAV4 and the \$45,000 Hummer are the only vehicles in this category to have both. RAV4—the more you get under its skin, the more it gets under yours.



RAV4's 2.0-liter, twin-cam 4-cylinder with electronic fuel injection (EFI) produces most of its 125 lb.-ft. of torque at low rpm so its acceleration and fuel mileage are impressive.**



The independent rear suspension features coil springs supported by double wishbones with trailing arms and low-pressure gas shocks.



Ventilation slots between inner and outer sides of front brake rotors (shown at left) help reduce the heat that causes brake fade. Optional limited-slip rear differential (shown at right) improves traction for better cornering (4WD only).



*Driven is a registered trademark of DEX-Gelinson Inc.
**For details, see EPA mileage statement on page 77.



RAV4 4-Door shown in Confetti Blue Metallic and RAV4 2-Door shown in Bright Red. Both include optional equipment.

PERSONALIZATION



This Sequoia Green Metallic 2-Door features the sporty graphics and hard spare tire cover of the Style Package.

In addition to a long list of options and accessories (pages 25 and 26), you can personalize your RAV4 even further with one of four great packages—the Rugged, Active, Style or Convenience Package. If you're the adventurous type, or maybe you just want to look the part, the Rugged Package may be just what you're looking for. The examples on your left include aggressive fender flares, side sport bars and bodyside graphics (2-Door) or cladding graphics (4-Door). Or maybe you'd like the extra carrying capacity of the Active Package or the sporty looks of the Style Package. And on the inside, there's the Convenience Package—floor mats, a center console and detachable storage bags for the rear door. There's something here for just about everybody. And the choice is yours.



The Active Package includes cladding stripes, a hard spare tire cover, a snap-on roof rack and a rear step bumper/tow hitch.*

*Trailer ball, ball mount kit and wiring harness sold separately. Shown with aftermarket bicycle rack attachment.

C O L O R S



Alpine Silver Metallic

Natural White



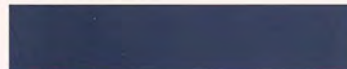
Bright Red (2-Door only)



Prussian Red Pearl (4-Door only)



Confetti Blue Metallic



Purple Storm Metallic



Ocean Mist Metallic



Sequoia Green Metallic

O P T I O N S A N D A C C E S S O R I E S

Thanks to our large collection of Genuine Toyota Options and Accessories, you can create your own RAV4. And because each is designed expressly for your vehicle, you can be assured of getting the proper fit and function and all the quality and dependability you'd expect from a Toyota product. The fun part is up to you. But remember, Toyota vehicles are built with popular option combinations. Not all options are available separately. For assistance, see your Toyota dealer. He or she can help you locate the RAV4 that's right for you.



Snug-fitting mask helps protect front end from bug stains, sand and minor road debris. Soft flannel lining won't chafe paint.



Help protect your RAV4 with the Toyota Vehicle Intrusion Protection (V.I.P.) System RS-3000 accessory. When activated, it disables the starter and protects all entry points. Included is a glass-breakage sensor and a remote transmitter that arms/disarms the unit and locks/unlocks** the doors from up to 30 feet away.



Program hours of continuous music with the 6-Disc CD Changer accessory. Functions include random play and track select.



3-spoke aluminum alloy wheels not only look great, they also improve handling by reducing unsprung weight.

*Dialer ball, ball mount kit and wiring harness sold separately.
**Requires the optional Upgrade Package.

RAV4 2-Door shown in Sequoia Green Metallic with optional equipment.



2-Door Fabric in Black



4-Door Fabric in Gray



RAV4 2-Door shown in Sequoia Green Metallic with optional equipment.



Sporty rear step bumper helps provide an easy reach to accessory roof rack. And incorporated into the bumper is a hitch receiver.*



Choose from either the single-disc Compact Disc Deck or Toyota's 3D CD (3-disc in-dash changer) which lets you enjoy three discs in a row.



Tires kick up mud, stones and snow. Mudguards deflect it away from paint.



Help protect your RAV4 with the Toyota Vehicle Intrusion Protection (V.I.P.) System RS-3000 accessory. When activated, it disables the starter and protects all entry points. Included is a glass-breakage sensor and a remote transmitter that arms/disarms the unit and locks/unlocks** the doors from up to 30 feet away.



Snug-fitting mask helps protect front end from bug stains, sand and minor road debris. Soft flannel lining won't chafe paint.



Program hours of continuous music with the 6-Disc CD Changer accessory. Functions include random play and track select.



3-spoke aluminum alloy wheels not only look great, they also improve handling by reducing unsprung weight.

ACCESORIES

- | | |
|--|--|
| CFC-free air conditioning | Carpeted floor mats |
| Cargo mat | Cargo net |
| Rear door storage bags | Center console |
| Removable roof rack | Luggage carrier attachment |
| Ski rack attachment | Rear step bumper/tow hitch |
| Spare tire cover | Front-end mask with storage bag |
| Mudguards | 3-spoke aluminum alloy wheels |
| Aluminum alloy or steel wheel locks | Keyless Entry System† |
| Mid-line ETR/Cassette with 4 speakers | Compact Disc Deck |
| Toyota 3D CD (3-disc in-dash changer) | 6-Disc CD changer (cargo area-mounted) |
| Auto-reverse Cassette Deck with Dolby® | Toyota Vehicle Intrusion Protection (V.I.P.) System S-1000† and RS-3000* |

†Electrically Tuned Radio.
 *Can be combined with Toyota Vehicle Intrusion Protection (V.I.P.) System S-1000; requires Upgrade Package.
 †Can be combined with Keyless Entry System.
 **Requires Upgrade Package.

*Trailer ball, ball mount kit and wiring harness sold separately.
 **Requires the optional Upgrade Package.

Every Toyota Car and Truck has excellent warranty coverage. However, given Toyota's worldwide reputation for quality, reliability and dependability, you may never find out just how good our new vehicle warranty really is. But, should you ever need it, we've definitely got you covered:

Basic Coverage: All components other than normal wear and maintenance items are covered for 36 months/36,000 miles.

Powertrain Coverage: Your engine, transmission/transaxle, front-wheel drive, rear-wheel drive, seatbelts and air bags are covered for 60 months/60,000 miles.

Rust-through Coverage: Corrosion perforation of sheet metal is covered for 60 months/unlimited miles.

Service Adjustment Coverage: Components that may have been improperly adjusted at the factory are covered for 12 months/12,500 miles (24 months/18,000 miles in New York state).

Federal Emission Defect Coverage: Federal emission components are covered for 36 months/36,000 miles.

A Federal Emission Performance Warranty applies to those vehicles registered in states and local jurisdictions that require a periodic EPA-approved inspection and maintenance program.

California and Massachusetts

Emission Coverage: Additional emission warranties may apply to vehicles sold new in these states.

Service Part or Accessory Warranty covers any Toyota-approved part or accessory for 12 months and unlimited miles. If the vehicle has more than 12 months left on its basic warranty and the part or accessory is installed by a Toyota dealer, then it benefits from the same coverage as the vehicle. Car covers, however, are limited to 12 months and batteries are pro-rated after 12 months.

See your Toyota dealer for details about the new vehicle warranty.

In addition, there may be times when we will establish a special policy adjustment which will further defray repair costs.

RAV4	2WD 2-Door	2WD 4-Door	4WD 2-Door	4WD 4-Door
EXTERIOR				
Aerodynamic sealed beam halogen headlights	■	■	■	■
Dual black outside mirrors	■	■	■	■
Dual sunroofs with inside door storage clips	■	—	■	—
Power glass moonroof	—	■	—	■
Front towing hook	■	■	■	■
16" styled steel wheels P215/70R16 tires	■	■	■	■
6-spoke 16" aluminum alloy wheels with P215/70R16 tires	—	■	■	■
5-spoke 16" aluminum alloy wheels with P235/60R16 tires, fender flares and front suspension brace	—	—	■	■
Variable intermittent front and intermittent rear wipers	■	■	■	■
INTERIOR				
Reclining front and folding/reclining rear cloth seats with outboard headrests	■	■	■	■
Door trim with fabric inserts, front map pockets	■	■	■	■
Full carpeting	■	■	■	■
CFC-free air conditioning	■	■	■	■
Cruise control	■	■	■	■
Tilt steering wheel	■	■	■	■
Remote hood and fuel-filler door releases	■	■	■	■
Cup holders (three in 2-Door models; one in 4-Door models)	■	■	■	■
Digital clock	■	■	■	■
Rear window defogger	■	■	■	■
Side-front window demisters	■	■	■	■
Passenger-side vanity mirror	■	■	■	■
Speedometer, tachometer, odometer and tripmeter; coolant temperature and fuel level gauges	■	■	■	■
PACKAGES				
All-Weather Guard Equipment Package	■	■	■	■
Style Package—cladding graphic and hard spare tire cover	■	■	■	■
Active Package—cladding graphic, hard spare tire cover, roof rack and rear step bumper/tow hitch	■	■	■	■
Rugged Package—bodyside graphic (2-Door) or cladding graphic (4-Door), fender flares and side sport bars	■	■	■	■
Convenience Package—detachable rear door storage bags, center console and floor mats	■	■	■	■
Upgrade Package—Power Package (power windows, door locks and dual outside mirrors) and tilt steering wheel	■	■	■	■
AUDIO SYSTEMS				
Deluxe ETR (Electronically-Tuned Radio) with 4 speakers and antenna	■	■	■	■
Deluxe ETR/Cassette with 4 speakers and antenna	■	■	■	■
Compact Disc Deck	■	■	■	■
CD Changer—Toyota 3D CD (3-disc in-dash)	■	■	■	■
CD Changer—6-Disc (cargo area-mounted)	■	■	■	■

1997 RAV4 SAFETY FEATURES

Driver-side and front passenger-side air bag Supplemental Restraint System (SRS) ¹	Side-door impact beams
4-wheel Anti-lock Brake System (ABS)	Rear proportioning valve
Front ventilated disc brakes	Adjustable driver-side and front passenger-side outboard shoulder belt anchors (4-Door models only)
Child-protector rear door locks (4-Door models)	3-point shoulder belts in outboard positions
Available full-time 4-wheel drive	Automatic transmission shiftlock system
Front and rear headrests in outboard positions	Integrated center high-mount stoplamp

RAV4	2WD 2-Door	2WD 4-Door	4WD 2-Door	4WD 4-Door
MECHANICAL PERFORMANCE				
Engine	2.0-liter DOHC 16-valve EFI 4-cylinder 120 hp @ 5,400 rpm 129 lb.-ft. @ 4,600 rpm			
Transmission	Standard Optional	Standard Optional	Standard NA	Standard Optional
Body construction	Unitized body			
Drivetrain	Front engine, front-wheel drive (2WD) or full-time 4-wheel drive (4WD)			
Suspension	Independent MacPherson strut front suspension with stabilizer bar and hydraulic shock absorbers; double-wishbone coil-spring rear suspension with hydraulic shock absorbers			
Steering	Power-assisted rack-and-pinion			
Turning circle diameter, curb to curb (ft.)	33.5	36.1	33.5	36.1
Brakes	Power-assisted ventilated front disc; rear drum with load-sensing proportioning valve			
4-wheel Anti-lock Brake System (ABS)	Optional	Optional	Optional	Optional
EXTERIOR DIMENSIONS (in.)				
Overall height, unloaded with optional tires	64.8	65.0	65.2	65.4
Overall width with optional tires	66.7	66.7	66.7	66.7
Overall length with optional tires	147.2	163.4	147.2	163.4
Wheelbase	86.6	94.9	86.6	94.9
Tread width, front/rear with optional tires	57.5/57.7	57.5/57.7	58.3/58.7	58.3/58.7
INTERIOR DIMENSIONS FRONT/REAR (in.)				
Head room	40.0/38.6	40.3/39.0	40.0/38.6	40.3/39.0
Shoulder room	53.3/50.2	53.1/53.1	53.3/50.2	53.1/53.1
Hip room	55.8/39.6	55.9/56.0	55.8/39.6	55.9/56.0
Leg room	39.5/33.9	39.5/33.9	39.5/33.9	39.5/33.9
OFF-HIGHWAY				
Approach/departure angle (degrees) with optional tires	37/40	37/28	38/41	38/28
Minimum running ground clearance (in.) with optional tires	7.3	7.3	7.7	7.5
Locking center differential	NA	NA	Standard ⁴	Standard ⁴
Limited slip differential	NA	NA	Optional	Optional
Underbody protection	Skid plates under transfer case and fuel tank on 4WD models			
WEIGHTS AND CAPACITIES				
Curb weight, manual/automatic (lbs.)	2,469/2,513	2,612/2,657	2,646/NA	2,789/2,855
Gross Vehicle Weight Rating—GVWR (lbs.)	3,472	3,858	3,505	3,891
Payload, ⁵ manual/automatic (lbs.)	1,003/959	1,246/1,234	859/NA	1,102/1,036
Towing capacity ⁶ (lbs.)	1,500	1,500	1,500	1,500
Cargo capacity, rear seatbacks up/down (cu. ft.)	9.3/34.7	26.8/57.9	9.3/34.7	26.8/57.9
Fuel tank (gals.)	15.3	15.3	15.3	15.3
TIRES				
Size	P215/70R16 (P235/60R16 optional on 4WD models) ⁷			
Type	All-Season steel-belted radial blackwalls			
Spare	Full-size			
MILEAGE ESTIMATES (EPA ESTIMATED MPG CITY/HIGHWAY)⁸				
5-speed manual overdrive	24/30	24/30	22/26	22/26
4-speed electronically controlled automatic overdrive (ECT)	24/29	24/29	NA	22/27

- Standard
- Factory option
- ▲ Accessory
- Not available
- NA Not applicable

¹Only in a registered trademark of Delco-Louis, Inc.

²Available after November 1996.

³Also available as an accessory.

⁴See page 18 for more information on RAV4's driver-side and front passenger-side air bag Supplemental Restraint System (SRS).

⁵5-speed manual models only; not available on 4-speed ECT models.

⁶Including occupants, equipment and cargo.

⁷Requires Class I towing hitch.

⁸1997 preliminary EPA mileage estimates determined by Toyota. 1997 EPA mileage estimates not available at time of printing. See your Toyota dealer for details.

Some vehicles are shown with optional equipment.

For further information regarding wiring converters and towing hitch receivers, please consult the 1997 Toyota Trailer Wiring Guide, available at your local Toyota dealer.

Vehicle specifications, standard features and optional equipment are based upon information available at the time of printing and are subject to change without notice. Specifications and standard and optional equipment are for mainland U.S.A. vehicles only and may differ in the state of Hawaii and in other regions.

Castrol Toyota's Motorsports Partner

PRINTED ON RECYCLED PAPER
10% POST CONSUMER WASTE