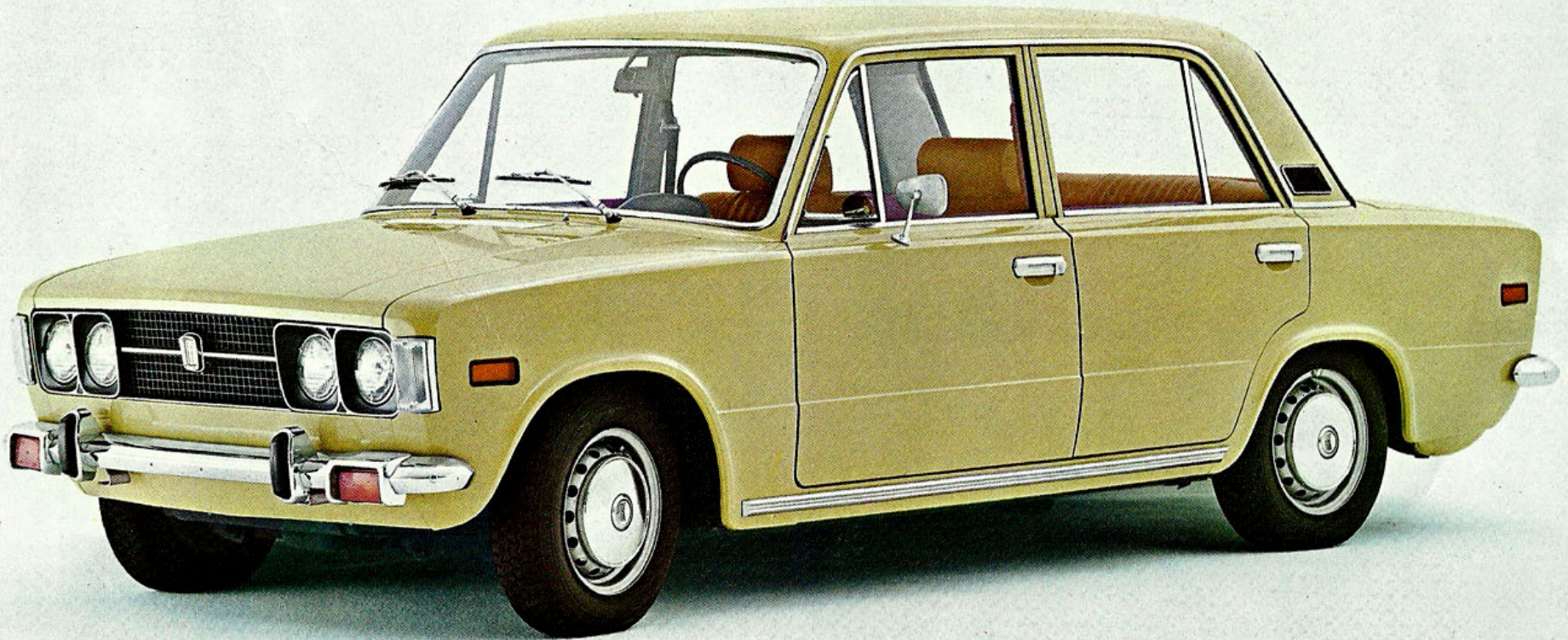
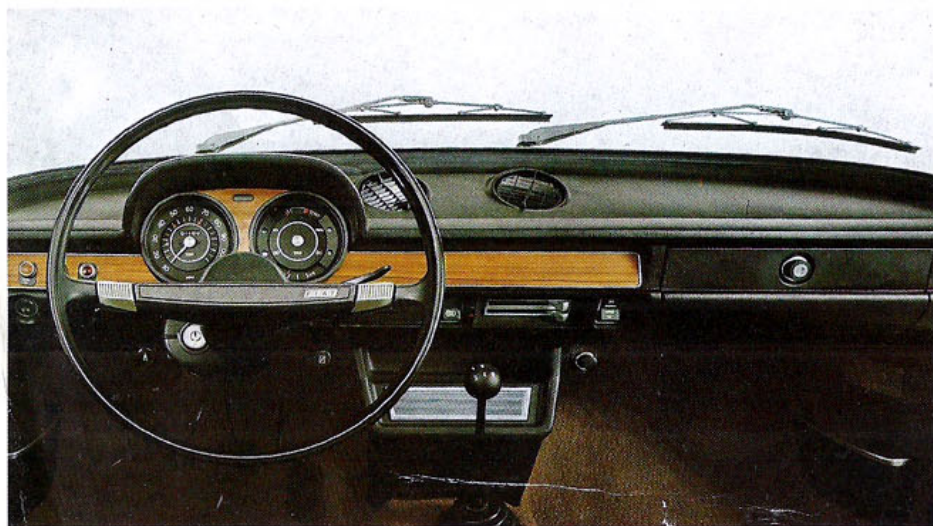


FIAT
124
SPECIAL

Sedan





Specifications Fiat 124 Special Sedan

Stressed body structure

Wheelbase: 95.3 in.
Track: front, 52.4 in.
rear, 51.2 in.
Overall length: 160.4 in.
Overall width:
63.4 in.
Overall height: (unladen)
55.9 in.

Engine

4 cylinders. Capacity, 1,438 cc.
Bore, 3.15 in.
Stroke, 2.8 in.
Compression ratio, 9-to-1.
Maximum power, 70 h.p. (DIN) -
74 h.p. (SAE) at 5,400 r.p.m.
Cast iron crankcase. Aluminium
cylinder head. Five-bearing
crankshaft. Overhead valves.
Downdraught twin-choke
carburettor. Mechanical fuel
pump. Forced lubrication by
gear-type pump. Cartridge-type,
full-flow oil filter. Centrifugal
water pump. Blow-by gases
recirculation device, whereby
gases from the breather are fed
into the inlet manifold and
burned in the cylinders.
Fuel evaporative
emission control system.
Exhaust emission control system.
Engine-clutch-gearbox unit
flexibly mounted on rubber.

Clutch

single dry plate.

Gearbox

four forward speeds and reverse.
Synchronizers on all forward
gears. Gear lever on shaft
tunnel.

Propeller shaft

two-piece, with rubber-mounted
centre bearing. Universal joints
on rear half and flexible coupling
at gear box end.

Rear axle

hypoid pinion, ratio 4.1-to-1.

Front suspension

wishbones, coil springs, hydraulic
shock absorbers and anti-roll
bar. All joints lubricated for life.

Rear suspension

live axle located by four radius
arms and Panhard rod. Coil
springs, hydraulic shock
absorbers.

Steering

worm and roller, with symmetrical
individual track rods. Central
relay. All steering joints
lubricated for life.

Brakes

Discs, vacuum servo-assisted
with brake load proportioning
valve. Independent brake
system front and rear. Parking
brake operating on rear discs.

Fuel tank

at rear. Capacity:
approx 8 Imp. galls.

Wheels

disc-type with 4½ J rims.
155 SR-13" radial ply tyres.
Spare wheel carried in left of
trunk

Electrical system

12 Volt. Alternator: max. output
53 A. 60 Amp/h battery.

Maximum speed

93 m.p.h.

Steering lock.

Electric windshield washers,
normal and intermittent
windshield wipers.

Optional: fully automatic transmission.

For a Fiat, Fiat Service

Wherever Fiat cars go, Fiat
service goes too.
The Fiat organization is ready
at all times to keep your car
in perfect operating condition.
Fiat Service gives the owner
rapid assistance at reasonable
cost and a comprehensive
guarantee covers the
workmanship and materials of
all new Fiat cars.
Fiat Ricambi, which manufactures
and stores all Fiat replacement
parts in Turin, ensures prompt
dispatch of spare parts through
more than 12,000 Service Centres
all over the world.
The Fiat organization is
represented in every major
Canadian city with more than
90 dealers across the country.
In addition, considering the vast
dealership network in the
United States as well, Fiat
owners are now offered more
than 650 points of assistance
throughout North America.

Descriptions and illustrations in this
leaflet are of an indicative nature
only and shall not be held binding.

Fiat Publicity - Edition No 3143/C
Printed in Italy
Mario Gros Tomasono & C.