

ROAD LOVE RENAULT



ROAD LOVE RENAULT 

ROADABILITY

Renaults are engineered for superb roadability in all situations: maneuvering in city traffic, squeezing into parking spaces, merging into fast-moving expressway traffic, or cruising the interstates all day at high speed. Test drive a Renault 10 or Renault 16 . . . zip it up in the tightest imaginable turning circle . . . zoom it down the highway . . . then bring it on home. It's the love of the road that's yours for the taking.



ROAD LOVE RENAULT 

COMFORT

Renaults give you all the comforts you miss in many small economy cars. Famous Renault bucket seats are standard on the Renault 16 and Renault 10. So are removable, adjustable headrests, a fresh air ventilation system, rear windows that open, courtesy lights, assist handles, armrests, coat hooks, dual padded sun visors with vanity mirror, and more! A Renault interior looks beautiful and rides luxuriously!

ROAD LOVE RENAULT

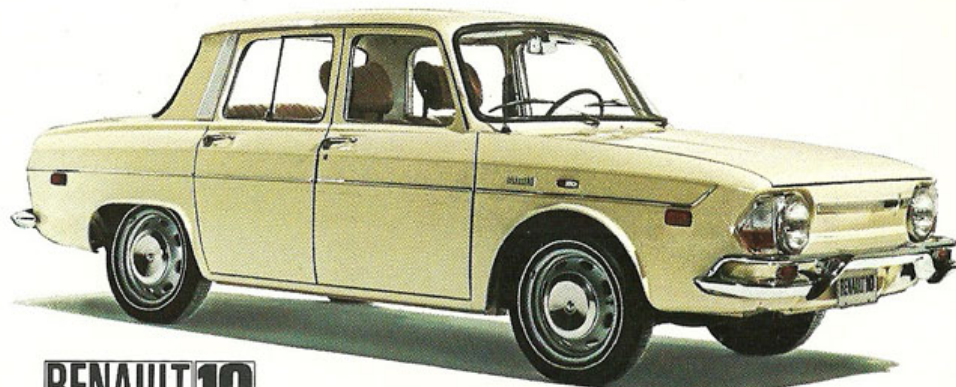


ECONOMY

RENAULT 10 UP TO 35 MPG



RENAULT 16 UP TO 30 MPG

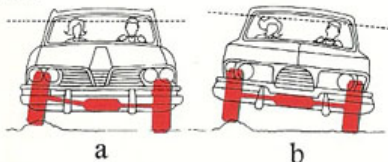


RENAULT 10

Up to 35 miles to the gallon for the Renault 10, up to 30 mpg for the Renault 16! That kind of economy is hard to beat! Plus a hermetically sealed liquid cooling system which means you don't buy anti-freeze every year. Rugged 4-cylinder 5 main bearing engine, wet cylinder sleeves, unibody construction, tough protective finish and undercoating . . . all these standard features add up to durability and long life.



Engine Over The Drive Wheels provides more positive traction on snow, ice and sand . . . and a flat front floor with no hump in the middle.



4-Wheel Independent Suspension (a) on every Renault lets each wheel adjust to the road bumps independently, providing a smoother ride, better handling, greater stability and safety. Compare this to the rigid axles (b) found on most other cars.

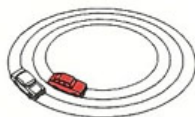
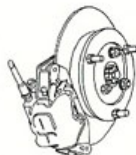
When you buy a new Renault you benefit from the many years of Renault leadership in small car design, not only in the big features like suspension but in the smallest details.

RENAULT, INC. 100 SYLVAN AVE., ENGLEWOOD CLIFFS, NEW JERSEY 07632
RENAULT, INC. reserves the right to make changes at any time, without notice, in prices, colors, materials, equipment, specifications, models, and to discontinue models.



Liquid Cooling System with permanent anti-freeze and distilled water hermetically sealed in at the factory, needs attention only every 2 years or so (or about 18,000 to 20,000 miles). Quiet and efficient, it also offers fast heat for winter comfort.

Disc Brakes provide surer stopping power, more positive braking even when wet. Disc brakes and dual braking system are standard equipment.



Rack-and-Pinion Steering on the Renault gives you better control, tighter turning circle, and more feel of the road.

Printed in U.S.A.
SL 2/71 200M

ROAD LOVE RENAULT



EVERY RENAULT HAS ALL THESE IMPORTANT FEATURES

RENAULT 16

SUPERB ROADABILITY AND WAGON FEATURES

STANDARD FEATURES

- Front wheel drive
- 4-wheel independent suspension
- Torsion bars
- Rack-and-pinion steering
- Front disc brakes, drums on rear
- Aerodynamic styling
- Engine over drive wheels
- Hermetically sealed liquid cooling system
- 4-speed fully synchronized transmission
- Heavy-duty heater and defroster (variable speed and temperature controls)
- Heater outlets front and rear seat area
- Flow-through ventilation
- Adjustable fresh air vents at each end of dashboard
- 2-speed wide-arc electric windshield wipers
- Dual-jet windshield washers
- Safety glass all around
- Reclining front bucket seats
- Adjustable and removable headrests
- 3-point seat belts with built-in anchors
- Courtesy light
- Brake efficiency indicator light
- Emergency brake indicator light

OPTIONS

Automatic transmission • Vinyl upholstery • Radial ply tires — black or whitewall • AM or AM/FM Radio • Air conditioning • Electric rear window defogger • Electric sliding sun roof • Tinted glass • and more!

- Manual choke and indicator light
- Ignition switch/steering wheel lock
- Ignition key reminder light on instrument panel
- Padded dash
- Dual padded two-way sun visors with vanity mirror
- Roll-down rear windows
- 4 inside door locks
- Childproof rear door locks
- Armrests on all 4 doors
- Illuminated cigarette lighter/ashtray
- Drop-down center armrests, front and rear
- 3 glove compartments
- Convenient spare tire storage in engine compartment
- 5-door convenience
- Turn signals
- Back-up lights
- Emergency 4-way flashers
- Rubber bumper guards, front and rear
- Front over-ride bar
- Side lamps/reflex reflectors, front and rear
- Day/night inside rear view mirror with deflecting base
- Outside rear view mirror
- Lockable engine compartment
- Safe jacking points
- Factory applied rust inhibitor and undercoating
- Easy-access battery
- No lubricating points
- Also see specifications for Renault 16
- Complies with all government safety and anti-air-pollution regulations



SPECIFICATIONS

Engine 4-cylinder in-line, 4-stroke, liquid cooled, mounted in front. 5 main bearing crankshaft. Aluminum alloy block with permanent mold casting. Removable wet cylinder sleeves. Aluminum alloy cylinder head with wedge-shaped combustion chambers. Overhead chain-driven camshaft rotating in 5 journals. Lubrication: combination splash and pressure-feed with camshaft-driven Eaton type rotor oil pump. Carburetion: dry-type air filter with manual control warm air intake system, camshaft operated diaphragm-type fuel pump. One Solex downdraft, double-barrel carburetor with exhaust emissions and fuel evaporation control, accelerating pump and manual choke. Light on instrument panel signals when choke is on. Bore: 3.032 inches. Stroke: 3.307 inches. Displacement: 95.5 cu. in. (1565 cc). Maximum horsepower: 70 at 5200 rpm. Maximum torque: 85 at 2500 rpm. Compression ratio: 8.6:1.

Cooling System Pressurized liquid cooling system with radiator, pump, transparent expansion tank, and thermostatically controlled electric fan.

Transmission Front-wheel drive. With manual transmission: 4-speed, fully synchronized with steering column gearshift lever. Standard "H" pattern. Power transmitted to front wheels via half-axle shafts with maintenance-free inner and outer joints. Gear ratios: 1st: 3.6:1, 2nd: 2.25, 3rd: 1.48, 4th: 1.032, Rev: 3.08. Final drive ratio: 3.77.

With optional automatic transmission: 3 speeds forward, 1 reverse. Steering column selector lever with standard "PR.D.N.2.1" gear quadrant on instrument panel. Power transmitted to front wheels via half-axle shafts with maintenance-free inner and outer joints. Gear ratios: 1st: 2.33, 2nd: 1.44, 3rd: 1.00, Rev: 2.00. Torque converter, maximum torque multiplication: 2.2 to 1. Final drive ratio: 3.77.

Brakes Vacuum assisted dual hydraulic brake system. Self-adjusting front disc brakes with full floating calipers and single cylinder; rear drum brakes: a pressure valve automatically controls the rear-brake hydraulic pressure according to load of vehicle; separate lights on instrument panel signal brake pad wear and failure in front or rear hydraulic circuit; cable-operated handbrake effective on rear wheels, dash light indicates when handbrake is on; transparent brake fluid reservoirs.

Steering Rack and pinion. Turning circle: 32.8' curb-to-curb. Four turns lock to lock. Steering ratio 23:1. Maintenance-free lubrication.

Suspension Front: Independent with rubber-mounted pressed-steel unequal-length control arms, permanently adjusted and lubricated ball joints, longitudinal torsion bars, double-acting telescopic shock absorbers and stabilizer shaft.

Rear: Independent with trailing arms, transversal torsion bars, double-acting telescopic shock absorbers and stabilizer shaft.

Tires 155x14 (155x355) standard or optional radial ply. Recommended cold tire inflation pressures: 23 psi front, 28 psi rear.

Dimensions Wheelbase: 104.3". Overall length: 168.4". Height: 57.3" (empty). Width: 64.9". Ground clearance: 4.5" (loaded). Curb weight: 2271 lbs. (standard); 2359 lbs. (automatic). Luggage capacity with rear seat in normal position: 12 cu. ft.; with rear seat backrest suspended and seat moved and tipped forward: 26 cu. ft.; with rear seat removed: 42 cu. ft.

Capacities Fuel tank: 13.2 gal. Crankcase: 4.5 qts. (with oil filter). Coolant: 7 qts. (with heater). Manual transmission: 3.5 pts. Automatic transmission, torque converter: 3 qts.; transmission: 6-1/4 qts. (including torque converter). Normal refill: 3-1/4 qts.

Heating and Cooling High capacity, fast-operating variable speed heater with 10 point regulator. 3 vents at base of windshield provide full width defrosting in winter and coupled with 2 adjustable vents at each end of the dashboard, complete flow-through ventilation in summer.

Electrical System 12-volt; 30/40 ampere alternator; relay-type voltage regulator; 45 ampere/hour battery.

Safety and Special Features (Standard) Unitized body construction completely rust-proofed by dipping process. Fully reclining front bucket seat backs with adjustable and removable headrests. Rubber bumper guards, front and rear. Seat belts, front and rear. Childproof rear door locks. Drop-down center armrest, front and rear. 3 glove compartments. Front seat passenger grab handle, rear seat passenger assist handles. Ignition switch/steering wheel lock. Ignition key reminder light on instrument panel. Day/night inside rear view mirror with deflecting base. Variable intensity instrument panel lighting. Side lamps/reflex reflectors. Front wall-to-wall floor carpeting, rear rubber floor mat. Side jacking provisions. Lockable engine hood latch release. Outside rear view mirror. Also see back cover of brochure.

Optional Extras 3 forward speeds fully automatic transmission — Air conditioning — Tinted glass all around — AM or AM/FM radio — Blackwall or Whitewall radial-ply tires — All vinyl upholstery — Metallic paint — Luggage rack — Ski rack — Electrically-operated sliding steel sunroof — Rear window defogger — Vent shades, front and rear — Trailer hitch and more; ask your authorized Renault Dealer to show you his approved accessories line catalogue.

Complies with all government safety and anti-air-pollution regulations.

Warranty: 12 months, mileage unlimited.



RENAULT 10

THE OUTSTANDING ECONOMY CAR!

STANDARD FEATURES

- Engine over drive wheels
- 4-wheel independent suspension
- Rack-and-pinion steering
- Disc brakes — 4 self-adjusting hydraulic
- Hermetically sealed liquid cooling system
- 4-speed fully synchronized transmission
- Heavy-duty heater and defroster (2 speed) with variable temperature control
- Heater outlets front and rear seat area
- Adjustable fresh air ducts on both sides of dash
- 2-speed wide-arc electric windshield wipers
- Dual-jet windshield washers
- Safety glass all around
- Bucket seats
- Adjustable and removable headrests
- 3-point seat belts with built-in anchors
- Courtesy light
- Brake efficiency indicator light

OPTIONS

- Pushbutton automatic transmission • Vinyl upholstery • Reclining bucket seats • Radial ply tires — black or whitewall
- AM or AM/FM Radio • Air conditioning
- Tinted glass • and more!



- Manual choke and indicator light
- Ignition switch/steering wheel lock
- Ignition key reminder light on instrument panel
- Padded dash
- Sliding rear windows
- 4 inside door locks
- Dual padded, two-way sun visors with vanity mirror
- Armrests on front doors
- 3 ashtrays
- Zipper pocket on back of seats
- 2 glove compartments
- Convenient spare tire storage under front luggage compartment
- 4-door convenience
- Turn signals
- Back-up lights
- Emergency 4-way flashers
- Rubber bumper guards, front and rear
- Front over-ride bar
- Outside rear view mirror
- Side lamps/reflex reflectors, front and rear
- Inside rear view mirror with deflecting base
- Lockable engine compartment
- Slotted wheel discs
- Safe jacking points on each side
- Factory applied rust inhibitor and undercoating
- Also see specifications for Renault 10
- Complies with all government safety and anti-air-pollution regulations



SPECIFICATIONS

Engine 4-cylinder in-line, 4-stroke, liquid cooled, mounted at rear. Cast iron block with removable wet cylinder sleeves, 5 main bearing crankshaft. Aluminum alloy cylinder head with insert valve seats. Overhead slanting valves operated by push rods and rocker arms. Carburetion: dry-type air filter with manual control warm air intake system, water-heated aluminum alloy intake manifold, camshaft operated fuel pump, one Solex downdraft double-barrel carburetor with exhaust emissions and fuel evaporation control, accelerating pump and manual choke; light on instrument panel signals when choke is on.

(Standard Transmission) Bore: 2.874 inches. Stroke: 3.032 inches. Displacement: 78.6 cu. in. (1289 cc). Maximum horsepower: 56 at 4600 rpm. Maximum torque (lb./ft.): 70 at 2300 rpm. Compression ratio: 8.5:1. Top speed: 85 MPH. (Automatic Transmission) Bore: 2.756 inches. Stroke: 2.835 inches. Displacement: 67.6 cu. in. (1108 cc). Maximum horsepower 48 at 4600. Maximum torque (lb./ft.): 57 at 3000 rpm. Compression ratio: 8.5:1. Top speed: 85 MPH.

Cooling System Pressurized liquid cooling system with radiator, pump, thermostat, and transparent expansion tank.

Transmission 4-speed, fully synchronized with floor mounted, short throw tight gate, rearshaft lever. Standard "H" pattern. Gear ratios: 1st: 3.61, 2nd: 2.25, 3rd: 1.48, 4th: 1.03, Rev: 3.08. Optional 3-speed automatic with pushbutton control. Gear ratios: 1st: 3.54, 2nd: 1.81, 3rd: 1.03, Rev: 3.6. Rear axle final drive ratio 4.125 for manual and automatic.

Brakes Dual hydraulic brake system. Self-adjusting disc brakes on all four wheels with full floating calipers. Spring-loaded hydraulic control valve limits rear brake maximum pressure to avoid locking of rear wheels during emergency stops. Warning light on instrument panel signals failure in front or rear hydraulic circuit. Cable-operated handbrake effective on rear wheels. Transparent brake fluid reservoirs.

Steering Rack and pinion with compensating spring. Turning circle: 30.4 ft. curb-to-curb; 3.6 turns lock-to-lock; steering ratio: 20 to 1. Maintenance-free lubrication.

Suspension Front: Independent with rubber-mounted pressed-steel unequal-length control arms, permanently adjusted and lubricated ball joints, coil springs, double-acting telescopic shock absorbers and stabilizer shaft.

Rear: Independent swing axles pivoted on transaxle housing by needle bearings, strap-type travel limiters, 2 longitudinal radius rods attached to chassis center from swing axles, coil springs and double-acting telescopic shock absorbers.

Tires 145x380 (5.5x15) standard. 135x380 radial cord optional. Recommended cold tire inflation pressures 16 psi front; 27 psi rear. **Dimensions** Wheelbase: 89". Overall length: 167". Height: 55" (empty). Width: 60". Ground clearance: 5" (loaded). Curb weight: 1907 lbs. (Renault 10 Automatic 1841 lbs.)

Capacities Fuel tank: 10 gals. Crankcase: manual transmission 3.5 qts. (with oil filter); automatic transmission 3.0 qts. (with oil filter). Transaxle oil: 2 qts. (Renault 10 Automatic: 1.5 qts.) Cooling system: 7.5 qts.

Heating and Cooling Large fast-operating two-speed heater. Passenger compartment cooled in summer through adjustable outlets at each end of dashboard.

Electrical System 12 volts, 45 amp. hr. battery.

Luggage 11 cu. ft. in luggage compartment. 2 cu. ft. in recessed tray behind rear seat.

Safety and Special Features Safety-flex steering wheel, with padded hub and spokes. Fully padded, non-glare dash. Front bucket seats with adjustable and removable headrests. Rubber bumper guards, front and rear. Ignition switch/steering wheel lock. Ignition key reminder light on instrument panel. Coat hooks. Rear passenger assist handles. Wide arc 2-speed electric windshield wipers, with non-glare arms and blade holders. Dual-jet windshield washer. Sliding rear windows. 3-way courtesy light. 4-way flasher. Dual padded two-way sunvisors with vanity mirror in right sunvisor. Interior locks on all 4 doors. Breakaway inside mirror. Ashtrays, front and rear. Armrests. Slotted wheel discs. Side lamps/reflex reflectors. Also see back cover of brochure.

Optional Extras Air conditioning — Tinted glass all around — Pushbutton automatic transmission — AM or AM/FM radio with front and/or rear speaker kits — Whitewall or blackwall radial-ply tires — Fully reclining front bucket seat backs with adjustable and removable headrests — Vinyl upholstery — Cigarette lighter — Vent shades — Luggage rack — Trailer hitch and more; ask your Authorized Renault Dealer to show you his approved accessories line catalogue. Federal safety regulations complied with. Warranty: 12 months, mileage unlimited.

RENAULT 10

SIERRA



ROAD LOVE

RENAULT



FROM:

PLACE
STAMP
HERE

TO:

When you buy Renault you buy reliability . . . in the car and in the Renault organization that backs it up: 70 years of automotive leadership ■ over 400 authorized dealers ■ 7 parts depots located across the country, linked by teletype ■ 12 months warranty, mileage unlimited