



fleet.ford.com • 1.800.34.FLEET

To Serve You

GOVERNMENT SALES REGIONAL MANAGERS

Don Cobb
Northeast States:
CT, DE, MA, MD, ME, NH, NJ, NY, PA, RI, VT
860.250.9914
dcobb@ford.com

James Morgan
Southeast States:
AL, FL, GA, NC, SC, TN, VA
901.230.0125
jmorga12@ford.com

Jeff Nichols
North Central States:
IA, IL, IN, KY, MI, MN, OH, WI, WV
313.595.4691
jnichol3@ford.com

Greg Dugan
South Central States:
AR, KS, LA, MO, MS, OK, TX
972.632.8643
gdugan@ford.com

Scott Clark
Western States:
AK, AZ, CO, MT, ND, NE, NM, SD, UT, WY
801.808.4982
sclark10@ford.com

Steve Hoe
Western States:
CA, HI, ID, NV, OR, WA
916.705.5350
shoe@ford.com

GOVERNMENT SALES MANAGER

Tony Gratson
313.390.1041
tgratson@ford.com

STATE & LOCAL GOVERNMENT SALES MANAGER

Ron Anderson
313.390.1058
randers1@ford.com

VEHICLE SPECIAL ORDER (VSO) SALES COORDINATOR

Cale Kehoe
VSO Coordinator
313.390.0855
ckehoe1@ford.com

FEDERAL GOVERNMENT SALES MANAGER

Debra Hairston
313.390.1095
dhairsto@ford.com

MUNICIPAL BUSINESS DEVELOPMENT MANAGERS

Tabitha Crawford
CO, CT, DC, DE, IA, ID, IL, MA, MD, ME, MN, MT, ND, NE, NH, NJ, NY, PA, RI, SD, UT, VT, WI, WY
313.594.1825
tcrawf22@ford.com

Janet Doty
AK, AL, AR, AZ, CA, FL, GA, HI, IN, KS, KY, LA, MI, MO, MS, NC, NM, NV, OH, OK, OR, SC, TN, TX, VA, WA, WV
313.390.7184
jdoty@ford.com

FORD CREDIT MUNICIPAL FINANCE PROGRAM
1.800.241.4199 (Press 1)

FORD FLEET CUSTOMER SERVICE

Fleet Customer Information Center (FCIC):
1.800.34.FLEET (U.S.)
1.800.668.5515 (CANADA)

Open 8:30 AM – 5:00 PM EST

Choose from the following selections:

- FIN Enrollment/Website (Press 1)
- Fleet Sales/Order-to-Delivery (Press 2)

The FCIC supports Fleet Accounts by providing a single source to answer all of your Fleet-related questions.

POLICE INTERCEPTOR® MODIFIERS GUIDE

Call Center: 877.840.4338
Downloadable PDF:
fordpoliceinterceptorupfit.com

FORD FLEET

North American Fleet, Lease & Remarketing Operations

www.ford.com/fordpoliceinterceptor

Some features discussed may be optional. Vehicles shown may contain optional or modifier-installed equipment. Features shown may be offered only in combination with other options or subject to additional ordering requirements or limitations. Information in this brochure was developed from Order Guides as of July 2015. Following publication of this catalog, certain changes in standard equipment, options and the like, or product delays may have occurred which would not be included in these pages. • Always wear your safety belt, secure children in the rear seat and follow airbag warning label instructions. • Ford SYNC®: Driving while distracted can result in loss of vehicle control. Only use SYNC/other devices, even with voice commands, when it is safe to do so. Some features may be locked out while the vehicle is in gear. Not all features are compatible with all phones. • For more information, visit fleet.ford.com. • Ford Motor Company reserves the right to change product specifications at any time without incurring obligations. Comparisons based on competitive models, publicly available information and Ford certification data at time of printing. • Unity is a registered trademark of Unity Manufacturing Co. • Vertex Standard is a trademark of Vertex Standard LMR, Inc. • Whelen is a registered trademark of Whelen Engineering Co., Inc.



2016 | POLICE & SPECIAL SERVICE VEHICLES



FORD FLEET



Go Further



Purpose-Built in the U.S.A.
 Engineered in Dearborn. Assembled in Chicago!

One's Refined, One's Reissued; Both Command R-E-S-P-E-C-T

United in the fight against crime, the Ford Police Interceptors – comprised of both Sedan and Utility – are America's best-selling pursuit-rated police vehicles.² In fact, the made-in-America¹ Ford Police Interceptor[®] lineup is the market-share leader in 41 states.² Unique features such as EcoBoost[®] power,³ Surveillance Mode,³ Pursuit Mode, safety-oriented telematics,³ and police-calibrated Intelligent AWD all contribute to the strong demand. So do the roomy, durable front seats, employing slim bolsters for easy ingress and egress.⁴ Since the new 2016 Utility and carryover 2015 Sedan hail from the same platform, each one comes equipped with common components and shared key maintenance parts. Actions, of course, speak louder than words: The 365-hp⁵ EcoBoost V6-powered³ Interceptors continue to outgun the V8-equipped competition in official testing⁶ (highlighted below; segmented by sedan and utility).

TOP MARKS FOR POLICE INTERCEPTORS EQUIPPED WITH THE 3.5L ECOBOOST V6³ AND STANDARD AWD

- ✓ **High-Speed Dynamics: Best Lap Average – Utility**
 L.A. County Sheriff's Dept. & Michigan State Police
- ✓ **High-Speed Dynamics: Best Lap Average – Sedan**
 L.A. County Sheriff's Dept.
- ✓ **Pursuit Dynamics: Best Lap Average – Sedan/Utility**
 L.A. County Sheriff's Dept. (exclusive test)
- ✓ **Acceleration: Best 0-30, 60 & 100 MPH – Sedan/Utility**
 L.A. County Sheriff's Dept. & Michigan State Police
- ✓ **Acceleration: Best 30-60 & 60-100 MPH – Sedan/Utility**
 L.A. County Sheriff's Dept. (exclusive test)
- ✓ **Acceleration: Best Quarter Mile – Sedan⁷/Utility**
 L.A. County Sheriff's Dept. & Michigan State Police
- ✓ **Braking: Best 60-0 MPH – Utility**
 L.A. County Sheriff's Dept. & Michigan State Police

¹Assembled in the U.S.A. with domestic and foreign parts. ²Based on IHS Polk U.S. Police Industry registration data through May 2015. ³Available feature. ⁴Compared to the previous generation. ⁵Tested with 93-octane fuel. ⁶Based on Michigan State Police and L.A. County Sheriff's Dept. test results for 2015 models. ⁷Statistical tie for best time in L.A. County Sheriff's Dept. testing.



New 2016 Police Interceptor® Utility Is The Law's Top Enforcement Pick¹

North America's best-selling pursuit-rated police vehicle¹ receives a refresh.

Previously, the direct-injected, twin-turbocharged, 365-hp² 3.5L EcoBoost® V6 was made available, and the front seats were markedly improved for greater room and durability, plus quicker entry and exit.³ This year, exterior styling is sleeker, with new front and rear fascias, plus strategically placed air curtains that improve aerodynamics. The new, bolder grille boosts cooling and is now common to every model. It's flanked by new headlamps with LED low beams – halogen high beams can wig-wag^{4,5} Taillamps are redesigned, the decklid lock cylinder is relocated, and there's a new downforce-inducing rear spoiler. Spacious accommodations are fortified with new instrumentation, a new steering wheel setup, and a new center stack with larger controls for improved ergonomics. A new liftgate release switch in the overhead console is not only handy, but helps provide added security by relocking the mechanism after 45 seconds if unopened. One-touch-up/-down power driver and front-passenger windows and a rear view camera with washer are now standard – the camera display in the 4" center-stack LCD screen is standard too, or choose to have that display in the rearview mirror as a no-charge option. The new Individual Tire Pressure Monitoring System (TPMS) displays pinpoint accuracy. Surveillance Mode technology^{4,6} alerts for a presence behind the vehicle. And the new Ford Telematics™ powered by Telogis® – Law Enforcement Edition^{4,7} displays insights into driver behavior, engine performance and much more through a single portal. *Unchanged* interior dimensions means current equipment can readily transfer, and some common components – front seats, brakes, etc. – are shared with the Sedan.

The 2016 Ford Police Interceptor Utility also features a new Shadow Black exterior, a new Blue Jeans exterior, and a slew of lighting solutions⁴ that include:

- New forward indicator pocket warning lamps⁸ – custom-designed, multifunctional Park/Turn/Warn (PTW) LED assemblies integrated into the headlamp system
- New front warning auxiliary lamps⁸ – integrated, custom-designed LED assemblies
- New taillamp housing⁹
- Front Headlamp Lighting Solution, and Taillamp Lighting Solution – each with side warning LEDs; headlamps have high-beam halogen bulbs for wig-wag simulation⁵
- Sideview mirror side markers – backlit-flashing, linear, high-intensity LEDs
- Spot lamps – high-intensity LEDs and swivel mounts
- Integrated grille lamps – high-intensity LEDs (Ready-for-the-Road Package only)
- Rear quarter-glass side markers – wide-angle LEDs



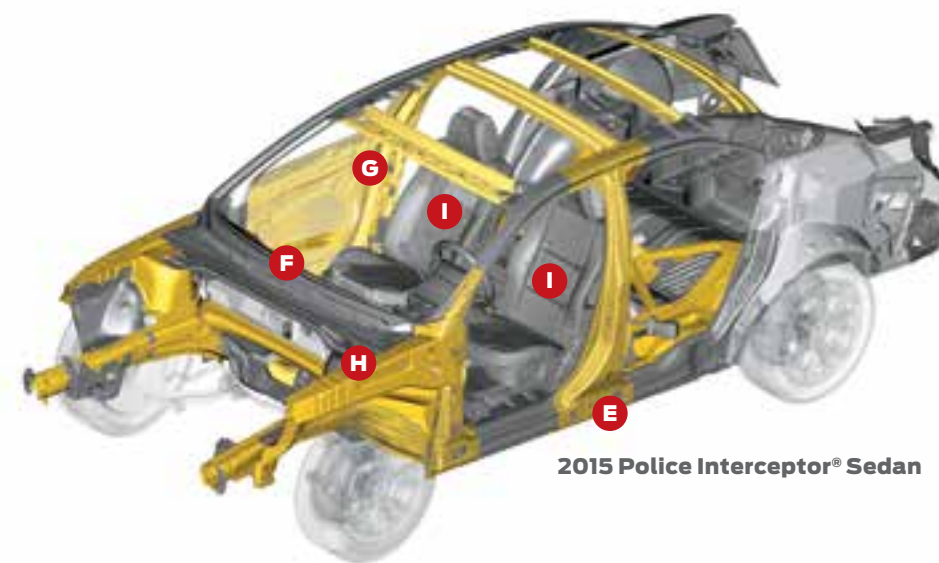
¹Based on IHS Polk U.S. Police Industry registration data through May 2015. ²Tested with 93-octane fuel. ³Compared to the previous generation. ⁴Available feature. ⁵Does not include controller. ⁶System can be configured to meet specific agency needs. For new-production ship through, contact Crown North America at 1.800.321.4934, ext. 3425, or visit crown-na.com. For aftermarket system ordering, contact Intermotive Vehicle Controls at 1.800.969.6080, or visit intermotive.net. ⁷Ford Licensed Accessory. ⁸Requires pre-wiring for grille lamp, siren and speaker. ⁹Does not include installation of LEDs.



Officer Protection Comes First (Proof Is in the Details)

- A. 75-mph rear-impact crash tested!** Ford Police Interceptors continue a proud tradition of being the only pursuit-rated vehicles to pass extreme rear-impact crash testing! The Special Service Police Sedan passes too.
- B. Surveillance Mode^{2,3}** This system warns that someone is approaching the rear of the vehicle. Upon detection, a chime sounds, the driver's window automatically rises and all doors lock. Intermittent Fault Filter[®] (IFF) technology sifts out erroneous changes in sensor signals.
- C. Manual key lock cylinders.** The 3 exterior cylinders – on the front doors and decklid/liftgate – provide quick, reliable access with a simple fleet key.
- D. Ballistic front-door panels.²** Manufactured by DEW Engineering, each panel is certified to full NIJ Level III specifications⁴ – National Institute of Justice Standard 0108.01. Per LAPD (Los Angeles Police Department) requirements, they're also designed to withstand special-threat rounds⁴ – 7.62 x 39 mm mild steel core type 56, plus 5.56 x 45 mm M193 and M855.

- E. SPACE (Side Protection And Cabin Enhancement) Architecture.** A hydroformed cross-vehicle beam solidifies the vehicle's sides.
- F. Multiple airbags.⁵** Just in case, the front-seat Personal Safety System[™] (with front airbags), front-seat side airbags, and 1st- and 2nd-row Safety Canopy[®] System (housing side-curtain airbags) are at the ready.
- G. Hidden rear door-lock plungers.²** These out-of-sight plungers are manually operable only by officers in front.
- H. Virtual force field of assurance.** Safety cell construction helps direct the force of a collision around the occupant compartment. Ultra-high-strength boron steel, high-strength aluminum alloy, and advanced plastics add reinforcement.
- I. Extra-tough anti-stab plates.** To help keep unruly types at bay, deflective steel intrusion plates are built into the driver and front-passenger seat backs.



¹The full-size spare tire secured in the factory location is necessary to achieve police-rated 75-mph rear-impact crash-test performance attributes. ²Available feature. ³System can be configured to meet specific agency needs. For new-production ship through, contact Crown North America at 1.800.321.4934, ext. 3425, or visit crown-na.com. For aftermarket system ordering, contact Intermotive Vehicle Controls at 1.800.969.6080, or visit intermotive.net. ⁴Contact 1-800-34-FLEET for panel performance specifications. Visit fleet.ford.com for more details. **Warning: As with any body armor, protection provided by the ballistic door panel is limited. Certain rounds or combinations of rounds may penetrate the panel and cause serious injury or death.** ⁵Always wear your safety belt and follow airbag warning label instructions.

Get a Grip: They're the Only Pursuit-Rated Vehicles with AWD¹ Standard

Police-calibrated Intelligent AWD isn't an add-on package – for every Ford Police Interceptor,[®] it's a full-time, self-activating system that continually adjusts torque distribution during all conditions. And it's easy to operate: Just drive. Preemptive torque is delivered by the millisecond among all 4 wheels to help maximize traction in snow or rain, on ice or gravel, and even when maneuvering on dry pavement. An active, on-demand coupler allocates a precise amount of torque from the front to the rear; up to 100% of available torque to either axle. There's no delay in delivery, and no wayward noises or clunks emanate from the system. Aggressive handling at any speed is predictable and easy. Intelligent AWD was co-developed with EVOE (Emergency Vehicle Operator Course) instructors for the utmost responsiveness and performance in challenging situations.

Police-programmed AdvanceTrac[®] electronic stability control provides the confidence to hit corners hard.² Monitoring driving situations through wheel speeds, steering angle, lateral acceleration, and vehicle rotation for both the vertical yaw axis and horizontal roll axis, AdvanceTrac adjusts automatically. To help avoid skidding and fishtailing, it utilizes the Anti-Lock Brake System (ABS) and all-speed traction control whenever wheelslip, understeer, oversteer or roll motion is detected. Roll Stability Control[™] is unique to the Utility: Gyroscopic sensors check body-roll angle at least 100 times per second.



Power on Demand: EcoBoost® Responds Without Hesitation, in Cold or Heat



High-powered Police Interceptor® V6 output is just the ticket to optimize closing speed for rapid takedowns. Generating a formidable 365 hp¹, the twin-turbo, direct-injection EcoBoost® V6 – tuned exclusively for police operations, and now available on both the Utility and Sedan – also delivers a powerful flat torque curve across the rev range. Output for the standard 3.7L V6 Interceptor Utility is a robust 304 horses. A 305-hp flex-fuel² 3.7L V6 is standard on the Interceptor Sedan AWD, while the available FWD-configured Interceptor Sedan performs with a 288-hp, flex-fueled 3.5L V6. Naturally aspirated V6 muscle employs twin independent variable camshaft timing (Ti-VCT) to help achieve peak power or efficiency, as conditions warrant.

Shift points for the 6-speed automatic are programmed to maximize V6 acceleration. The transmission adapts to officer driving habits, tracking maneuvers for optimal response in cruising situations as well as pursuit mode. Police-tuned, electric power-assisted steering (EPAS) ensures light turning effort at low speeds. Suspension components are finely calibrated for deft maneuvering at any speed. All of which reinforces the maxim of “Just drive.”

Engine and transmission components are backed by the assurance of the earlier of 5 years or 100,00 miles with Ford Protect PowertrainCARE.³ This coverage is further proof of the faith in dependability – backed by Ford Motor Company, honored at all Ford Dealerships, and fixed with Ford authorized parts installed by factory-trained and -certified technicians.

6 EXTRAORDINARY POWERTRAINS – EMPLOYING SMART 6-SPEED TRANSMISSIONS – OFFER DISTINCT PERFORMANCE AND EFFICIENCY ADVANTAGES OVER THE COMPETITION:

	 2016 Interceptor Utility 3.7L Ti-VCT V6 FFV ² (Standard)	 2016 Interceptor Utility 3.5L EcoBoost V6 (Optional)	 2015 Interceptor Sedan 3.7L Ti-VCT V6 FFV ² (Standard)	 2015 Interceptor Sedan 3.5L Ti-VCT V6 FFV ² (Optional)	 2015 Interceptor Sedan 3.5L EcoBoost V6 (Optional)	 2015 Special Service Sedan 2.0L EcoBoost I-4 (Optional)
Horsepower (hp @ rpm)	304 @ 6,500	365 @ 5,500 ¹	305 @ 6,500	288 @ 6,500	365 @ 5,500 ¹	240 @ 5,500 ¹
Torque (lb.-ft. @ rpm)	279 @ 4,000	350 @ 1,500-5,000 ¹	279 @ 4,000	254 @ 4,000	350 @ 1,500-5,000 ¹	270 @ 3,000 ¹
Drivetrain	All-wheel drive	All-wheel drive	All-wheel drive	Front-wheel drive	All-wheel drive	Front-wheel drive
Top speed (mph) ⁴	131	131	131	131	148	120
EPA-estimated ratings (mpg) ⁵	15 city/20 hwy	15 city/20 hwy	18 city/25 hwy	18 city/26 hwy	16 city/23 hwy	20 city/30 hwy

¹Tested with 93-octane fuel. ²Flex fuel is not available in states with California emissions standards: CA, CT, MA, MD, ME, NJ, NY, OR, PA, RI, VT and WA. ³The earlier of 5 years or 100,000 miles with PowertrainCARE coverage is a Ford Protect Ford Extended Service Plan (ESP) – with a zero deductible – that’s standard on all Police Utility and Sedan models, except in Florida and New York, where it is the earlier of 5 years or 100,000 miles with a PowertrainCARE Limited Warranty. See your dealer for full details. In Texas, Ford ESP is a Service Contract from Ford Motor Service Company (License #SCP-165). ⁴Electronically limited in police powertrain calibrations. ⁵Actual mileage will vary.



Going Beyond the Call

Heavy-duty durability is a result of being tested thoroughly. Evaluations are scrutinized for structural and mechanical integrity.

Heavy-duty steering and suspensions respond in the name of control, capability and comfort. Electric power-assisted steering (EPAS) adjusts to vehicle speed, crowned roads and crosswinds. For smooth, predictable, high-speed handling at every turn, the front and multilink rear suspensions are fully independent – each one also incorporates a sturdy stabilizer bar to combat body lean. Helical coil springs and stiffened, gas-pressurized hydraulic shocks are made for the rigors of police work. Premium hubs and bearings are extra-large for extra-long durability. The unique Ford designed underbody deflector plate¹ helps divert debris and guard against scrapes – crucial to the integrity of the oil pan. The plate's shape facilitates oil-filter changes.

Heavy-duty anti-lock disc brakes contribute to extreme high performance. Because police vehicles don't just need to go fast, they must halt rapidly – under control. Developed in association with the Los Angeles County Sheriff's Department and Michigan State Police, this long-wear-life system's unique, inverted-hat vented rotors are paired with unique calipers and pads for high thermal capacity.

Heavy-duty cooling system regulates extreme heat. The high-capacity radiator, engine oil cooler and transmission fluid cooler – working with the police-calibrated fan and grille – optimize operation in times of pursuit or periods of idling.

Heavy-duty wheels are teamed with police-purposed tires. Hefty 18" steel wheels are designed to withstand the punishment of daily duty no matter where the trail leads. The 5-spoke design lets the brakes breathe freely and stay cool. Tires are constructed to maximize grip, handling, rigidity and tread wear. To keep things rolling, the spare is not only full size, it's equipped with a Tire Pressure Monitoring System (TPMS) sensor. While TPMS is a standard vehicle feature, the Utility now takes it one step further with Individual TPMS, which can display exact pressure figures – tire by tire.

Heavy-duty alternator meets demands. Ample support for radar, lights, radios, cameras, computers and more.

Heavy-duty door tethers strengthen hinge action during police work. A front-door exclusive.



Protective deflector plate.¹ (Sedan shown.)



Large swept-area caliper with 13" rotor.



Purpose-built tire and wheel.



Supplemental front-door tether.



Police Interceptor® Sedan.



A



B



C



D



E

From Electronics to Ergonomics, It's One Heckuva Law-Abiding Cockpit

Police-purposed cabin. Within the ergonomically designed living quarters of the Sedan and Utility, police-specific amenities are numerous. A pair of info-packed MyFord® screens **A** – featuring an engine-idle meter readout – can be operated by 5-way steering wheel-mounted controls. The certified speedometer (also available in digital format through a MyFord screen) provides accurate readouts at a glance, and an engineered-in, column-mounted shifter **B** is a durable space saver. For convenience, pedals **C** are adjustable, and the Sedan trunk release **D** or new Utility liftgate release are finger-touch-activated. Dual 12-volt powerpoints **E** are also quick-access handy.

Voice-activated Ford SYNC.^{1,2} Once paired, SYNC recognizes a cell phone and supports hands-free voice calling. Press a switch on the steering wheel, then speak commands. SYNC Services³ provides turn-by-turn driving directions,² custom traffic alerts,² and much more. SYNC even enables some verbal command of devices plugged into the USB port¹ **F** that's conveniently integrated with an auxiliary audio input jack. (Check out www.ford.com/technology/sync for more details.)

Customizable, auxiliary control buttons¹ Minimize distraction while performing police tasks on the go: Ford engineers integrated 4 remappable switches **G** (Sedan shown) on the steering wheel. They can connect the driver to aftermarket equipment, including lights, sirens, speakers and canine door releases. Whatever the need, grounded outputs are on board for use with the switches.

Aftermarket cost-savings potential. A recessed universal top tray **H** is sized ideally for speed-sensing systems. The removable, Ford designed steel console mounting plate **I** is another solid foundation for aftermarket equipment. Center-console space measures a wide-open 9" between the driver and front-passenger seats, matching the width of the Crown Victoria Police Interceptor (CVPI) center console. So transfer of an existing CVPI apparatus is easy and direct; channel wiring from the back of the vehicle and/or the instrument panel.

Radar detection. While driving, BLIS® (Blind Spot Information System) with cross-traffic alert^{1,4} can lend an assist before changing lanes: Look for an amber warning light in a sideview mirror if a vehicle is detected on either side. When slowly backing up, cross-traffic alert sounds an alarm, flashes a light in the sideview mirror, and issues a message-center notice if any vehicles are sensed to be approaching – from up to 15 yards away.

More ways to raise awareness. The ultrasonic Reverse Sensing System¹ issues audible notifications when objects are recognized within 6' of the vehicle while slowly backing up. A rear view camera⁴ **J** that transmits a full-color image of what's happening behind is now standard – with a washer – on the Utility (view the image on the standard center-stack screen or choose to have it displayed in the rearview mirror instead, at no charge); opt for a camera¹ on the Sedan. Surveillance Mode^{1,5} is another way to add “eyes” in back: It utilizes existing driver-assist technologies to warn the driver, roll up the driver's window, and lock all doors when an individual is detected moving near the vehicle's rear.



H



F



G



I



J



Police Interceptor Utility.

¹Available feature. ²Driving while distracted can result in loss of vehicle control. Only use mobile phones and other devices, even with voice commands, when it is safe to do so. Not all features are compatible with all phones. ³SYNC Services varies by trim level and model year and may require a subscription. Traffic alerts and turn-by-turn directions available in select markets. Message and data rates may apply. Ford Motor Company reserves the right to change or discontinue this product service at any time without prior notification or incurring any future obligation. ⁴Driver-assist features are supplemental and do not replace the driver's attention, judgment and need to control the vehicle. ⁵System can be configured to meet specific agency needs. For new-production ship through, contact Crown North America at 1.800.321.4934, ext. 3425, or visit crown-na.com. For aftermarket system ordering, contact Intermotive Vehicle Controls at 1.800.969.6080, or visit intermotive.net.



Utility: as Comfortable as It Is Capable

A big patrol vehicle that accommodates officers big-time. This intimidating-to-criminals ride offers commanding views and presence. Head room, shoulder room and hip room are generous throughout. Since every second counts, the front seats feature slim, uniquely shaped seat back bolsters that enable officers to quickly and ergonomically get in, get going and get out. Those minimized bolsters supply ample room for a holstered pistol (left- or right-hand). Front seats are also reinforced with extra-tough, long-wear cloth to help ensure resistance against gun butts, duty belts and other implements. To allow for a finessed officer fit, the 6-way power driver's seat is standard; a 6-way power front-passenger seat is newly available.

60/40 split-fold bench in back. Reconfigure it as circumstances dictate, or quickly and conveniently fold the full bench for a capable 85.1 cu. ft. of load space. Recessed seating positions are outfitted in easy-clean vinyl.

Capacity for cargo, carbines and canines too. cavernous carry-all room makes the Utility the perfect choice for K-9 officers and SWAT team members with gear. Devices and dogs can be kept cooler with the auxiliary air conditioning.¹ Without compromising the 800-lb. load-floor capacity or the increased 1,630-lb. standard payload capacity, a full-size spare – complete with TPMS sensor – is stored under the flat workspace. And now the liftgate can be unlocked simply at the pull of a switch in the cabin's overhead console.



Sedan: as Comfortable as It Is Practical

Improved front seats and modified B-pillar trim: Compared to the previous generation of seating, reduced seat back bolsters create a noticeable, time-saving difference when rushing in and out of the vehicle. When officers are buckled up, those redesigned bolsters supply room for a holstered pistol. Seat-wear resistance is test-proven to be greater than the previous material. Dramatically slimmed B-pillar trim¹ for both the driver and front passenger allows for easier entrances and exits, along with creating more outboard elbow room. Note: The high-strength steel pillar on each side wasn't touched – only a 2-piece section of front trim was redesigned. A 6-way power driver's seat is standard; the 6-way power front-passenger seat is available.

Exemplary rear-seat transport. The rear bench maximizes space and is wrapped in heavy-duty vinyl. Access is made easy with wide-opening rear-door hinges (a Sedan exclusive). Door panels are simplified – no mapholders or cupholders – for ease of cleaning. For added security, hidden, manual door-lock plungers² can be ordered on each rear door.

Super-capacity trunk. A wealth of low-liftover room stows equipment out of sight. Pull up the flat load floor for the standard full-size spare stationed inside. It's identical to the other 4 wheels and comes ready-to-roll with a TPMS sensor. A slide-out, custom-fit electronics tray¹ and an auto-running circulation fan² are designed to keep conditions temperate for sensitive devices.



New Ford Telematics™ Powered by Telogis® – Law Enforcement Edition¹ Encourages Safe, Efficient Driving

- Idle Time
- Harsh Acceleration/Braking
- Light-Bar Status
- MPG
- ABS Events



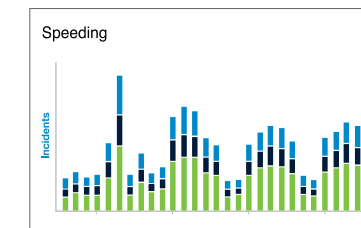
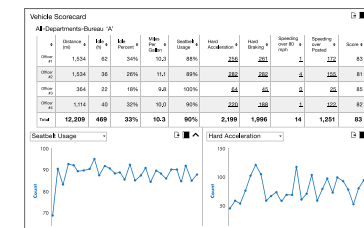
FORD TELEMATICS™ Powered by Telogis® - Law Enforcement Edition

This new, powerful telematics solution was expressly built for integration with Ford police vehicles and the special demands of law enforcement. Ford Telematics tracks real-time vehicle status across an entire fleet via a single web portal to foster safety, efficiency and productivity. Authorized personnel have secure access to both real-time and historical intelligence on numerous subjects, including driving behavior, and vehicle location and health. Details are delivered through a GPS-enabled “black box” – that constantly processes and records data – connected to the vehicle’s computer systems.

Encourage safe driving behavior. Ford is committed to vehicle safety; Ford Telematics provides the ability to extend this commitment beyond the vehicle, helping to improve driving behavior. Driver safety scorecards and dashboards provide at-a-glance insight into safety belt utilization, excessive speeding, harsh acceleration, hard braking, and other objective vehicle information. Empowering officers with details about their driving habits can assist with training and promote safe driving, which helps reduce collisions, injuries and liability.

Trim maintenance costs and reduce downtime with new fleet insights. In addition to helping to avoid catastrophic and costly vehicle failures, proactive maintenance can result in less vehicle downtime and longer vehicle life. Efficiently monitor routine maintenance needs, then send real-time alerts directly to the service department to schedule appointments.

Get the system safeguards that law enforcement agencies demand. Understanding that agency security is crucial, Ford Telematics manages vehicle location and other data in different streams; communications are firewalled, separated and secure. Data is accessible only to authorized users – and that access is encrypted.



STANDARD FEATURES

- Miles driven
- Vehicle location
- Effective utilization
- Excessive speeding events
- Airbag deployment indicator
- Harsh acceleration
- Hard braking
- Safety belt use
- Light-bar status
- ABS events
- Stability/traction control events
- 50+ analytic reports
- Real-time insight alerts
- Fleet overview dashboard
- Animated vehicle history
- Fuel economy

Standard Features, Plus Drivetrains, Powertrains & Wheels

2015 Police Interceptor® Sedan and New 2016 Police Interceptor Utility

STANDARD FEATURES

9" space between driver's seat and front-passenger seat for aftermarket consoles

12-volt powerpoints (2)

75-mph rear-impact crash tested¹

All-wheel drive (AWD)

Alternator – Heavy-duty 220-amp²

Audio – AM/FM stereo/single-CD player with MP3 capability, clock and 4 speakers (Sedan), 6 speakers (Utility)

Badge – Flex Fuel/AWD

Badge – Police Interceptor²

Battery – Heavy-duty (78-amp-hr/750 CCA)

Brakes – 4-wheel heavy-duty disc with Anti-Lock Brake System (ABS) (police-calibrated)

Built-in steel intrusion plates in both front seat backs

Climate controls – Manual air conditioning and rear defrost

Column-mounted shifter

Console mounting plate – Front

Cooling system – Heavy-duty

Cruise control

Door-sill scuff plates – Front and rear

Easy Fuel[®] capless fuel filler

Electric power-assisted steering – Heavy-duty

Engine – 3.7L Ti-VCT V6 FFV

Engine-hour meter

Engine idle meter

Exterior key locks – Driver and front-passenger doors and decklid/liftgate

Fleet key – Low-cost replacement

Flooring – Heavy-duty vinyl

Front fascia lower grille

Full-size spare wheel and tire with TPMS

Glass – Solar-tinted (Sedan)

Glass – Solar-tinted 1st row; privacy glass 2nd row and rear quarter and liftgate (Utility)

Headlamps – Projector-beam halogen (Sedan)

Headlamps – LED low beams; incandescent (halogen) high beams (Utility)

Headliner – Easy-to-drop

Independent front and rear suspensions

Liftgate unlock switch – Overhead console (Utility)

Mirrors – Power sideview, manual foldaway with integrated blind spot mirrors

MyFord[®] with 4.2" color LCD displays including digital speed readout in police instrument cluster and center stack "smart display"

Power-adjustable pedals

Power door locks

Power windows with one-touch-up/-down driver's side with disable feature (Sedan)

Power windows with one-touch-up/-down driver/front-passenger side with disable feature (Utility)

Powertrain mounts – Heavy-duty

Rear recovery hook (Utility; 3.5L EcoBoost[®] is late availability)

Red/white dome light – 1st row

Redundant digital speedometer display

Seat – Front heavy-duty cloth, 6-way power driver's with manual lumbar

Seat – Front heavy-duty cloth passenger

Seat – Rear vinyl bench (Sedan)

Seat – Rear vinyl 60/40 split (Utility)

Taillamps – Halogen (Sedan)

Taillamps – LED (Utility)

Tilt/telescoping steering column (Sedan)

Tilt steering column (Utility)

Tires – 245/55R18 all-season BSW

Tires – 235/55R18 all-season BSW (Sedan with 2.0L EcoBoost)

Transmission – 6-speed automatic (police-calibrated)

Trunk/cargo area – Flat load floor

Underbody deflector plate² (Sedan; Utility with 3.5L EcoBoost)

Universal top tray for police equipment

Wheels – Heavy-duty 18" 5-spoke steel

STANDARD SAFETY & SECURITY

Advanced, ultra-high-strength boron steel in the A-, B- and C-pillars

AdvanceTrac[®] electronic stability control (Sedan)

AdvanceTrac with RSC[®] (Roll Stability Control™) (Utility)

Airbag – Front-passenger knee (Utility)

Airbags – Front-seat side, plus Safety Canopy[®] System with side-curtain airbags and rollover sensor

Child-safety rear door locks

Ignition-wired trunk release (Sedan)

LATCH – Lower Anchors and Tether Anchors for Children in rear outboard seating positions

Personal Safety System™ for driver and front passenger³

Rear view camera with washer (Utility)

SOS Post-Crash Alert System™

SPACE (Side Protection And Cabin Enhancement) Architecture

Tire Pressure Monitoring System (TPMS); Utility features a true location Individual TPMS

Traction control

DRIVETRAINS

Police Interceptor Sedan (AWD) – Standard

P2M

Police Interceptor Sedan (FWD) – Optional; 501A – Standard

P2L

Police Interceptor Utility (AWD) – Standard

K8A

POWERTRAINS

Sedan

3.7L Ti-VCT V6 FFV with 6-speed automatic transmission – Standard (top speed 131 mph) 99K

3.5L Ti-VCT V6 FFV with 6-speed automatic transmission – Optional (top speed 131 mph) 998

3.5L EcoBoost V6 with 6-speed automatic transmission – Optional (top speed 148 mph) 99T

2.0L EcoBoost I-4 with 6-speed automatic transmission⁴ – Optional (top speed 120 mph) 999

Utility

3.7L Ti-VCT V6 FFV with 6-speed automatic transmission – Standard (top speed 131 mph) 99R

3.5L EcoBoost V6 with 6-speed automatic transmission – Optional (top speed 131 mph) 99T

WHEELS



Standard: Set of 5 heavy-duty 18" 5-spoke steel wheels with center caps (5th wheel is full-size spare)



Optional: Set of 4 heavy-duty 18" full-face wheel covers with metal clips (65L)



Optional: Set of 4 18" painted aluminum wheels (Sedan 642/Utility 64E)



Options, Packages, Vinyl Treatments & Dimensions

2015 Police Interceptor® Sedan and New 2016 Police Interceptor Utility

OPTIONS¹

	Sedan	Utility
1st- and 2nd-row carpeting	<input type="checkbox"/> 17I	<input type="checkbox"/> 16C
NEW – 6-way power front-passenger seat with manual lumbar and recline	<input type="checkbox"/> 61P	<input type="checkbox"/> 87P
18" full-face wheel covers (4)	<input type="checkbox"/> 65L	<input type="checkbox"/> 65L
18" painted aluminum wheels (4)	<input type="checkbox"/> 64Z	<input type="checkbox"/> 64E
100-watt siren/speaker	<input type="checkbox"/> 96P	<input type="checkbox"/> 18X
Automatic headlamps	<input type="checkbox"/> 55D	<input type="checkbox"/> 86L
Badge delete – Deletes all "Interceptor"/"Special Service Police" badging	<input type="checkbox"/> 19D	<input type="checkbox"/> 16D
Ballistic door panels – Driver's door only	<input type="checkbox"/> 65E	<input type="checkbox"/> 90D
Ballistic door panels – Driver and front-passenger doors only	<input type="checkbox"/> 65C	<input type="checkbox"/> 90E
BLIS® (Blind Spot Information System) with cross-traffic alert and heated sideview mirrors	<input type="checkbox"/> 55B	<input type="checkbox"/> 55B
Bumper to frame rail bracket kit (required for aftermarket Push Bar installation)	<input type="checkbox"/> 60B	–
Climate control – Auxiliary air conditioning	–	<input type="checkbox"/> 17A
Dark car feature	<input type="checkbox"/> 13C	<input type="checkbox"/> 43D
Daytime running lamps	<input type="checkbox"/> 94Z	<input type="checkbox"/> 94Z
Dome light – Red/white in cargo area	–	<input type="checkbox"/> 17T
Engine block heater	<input type="checkbox"/> 41H	<input type="checkbox"/> 41H
Enhanced Power Transfer Unit (PTU) cooler ²	–	<input type="checkbox"/> 52B
Ford SYNC® (Sedan requires Reverse Sensing System)	<input type="checkbox"/> 53M	<input type="checkbox"/> 53M
NEW – Ford Telematics™ powered by Telogis® – Law Enforcement Edition³	TBD	TBD
Front console plate delete ¹	<input type="checkbox"/> 67C	<input type="checkbox"/> 85D
NEW – Front warning auxiliary lamps	–	<input type="checkbox"/> 21L
NEW – Forward indicator pocket warning lamps	–	<input type="checkbox"/> 21W
Glass – Solar-tinted 2nd row, rear quarter and liftgate window	–	<input type="checkbox"/> 92G
Glass – Solar-tinted 2nd row only, privacy glass on rear quarter and liftgate	–	<input type="checkbox"/> 92R
Heated sideview mirrors	<input type="checkbox"/> 549	<input type="checkbox"/> 549
Hidden door lock plungers (for rear doors)	<input type="checkbox"/> 63B	<input type="checkbox"/> 52H
Hidden door lock plungers and inoperable rear door handles	<input type="checkbox"/> 63P	<input type="checkbox"/> 52P
Inoperable rear door handles/inoperable locks	<input type="checkbox"/> 18G	<input type="checkbox"/> 68G
Inoperable rear door handles/operable locks	<input type="checkbox"/> 18L	<input type="checkbox"/> 68L
Keyed alike – 1435x	<input type="checkbox"/> 43E	<input type="checkbox"/> 59E
Keyed alike – 1284x	<input type="checkbox"/> 43B	<input type="checkbox"/> 59B
Keyed alike – 1294x	<input type="checkbox"/> 43C	<input type="checkbox"/> 59C
Keyed alike – 0135x	<input type="checkbox"/> 43D	<input type="checkbox"/> 59D
Keyed alike – 0576x	<input type="checkbox"/> 43F	<input type="checkbox"/> 59F
Keyed alike – 0151x	<input type="checkbox"/> 43G	<input type="checkbox"/> 59G
Keyed alike – 1111x	<input type="checkbox"/> 43J	<input type="checkbox"/> 59J
Lockable gas cap	<input type="checkbox"/> 98K	<input type="checkbox"/> 19L
MySpeed Fleet Management	<input type="checkbox"/> 20M	<input type="checkbox"/> 43S

	Sedan	Utility
Noise-suppression bonds	<input type="checkbox"/> 20P	<input type="checkbox"/> 60R
Perimeter anti-theft alarm (requires key fob)	<input type="checkbox"/> 59B	<input type="checkbox"/> 593
Pre-wiring for grille lamp, siren and speaker	<input type="checkbox"/> 51G	<input type="checkbox"/> 60A
Rear console plate ⁴	<input type="checkbox"/> 97D	<input type="checkbox"/> 85R
Rear view camera – Image displayed in rearview mirror	<input type="checkbox"/> 77B	<input type="checkbox"/> 87R
Rear-window power disable (operable from driver's side)	<input type="checkbox"/> 67D	<input type="checkbox"/> 18W
Remappable switches (4)	<input type="checkbox"/> 47J	<input type="checkbox"/> 61R
Remappable switches with SYNC	<input type="checkbox"/> 47K	<input type="checkbox"/> 61S
Remote Keyless Entry System (key fob; not available with keyed-alike)	<input type="checkbox"/> 60P	<input type="checkbox"/> 595
Reverse Sensing System	<input type="checkbox"/> 76R	<input type="checkbox"/> 76R
Roof-rack side rails – Black	–	<input type="checkbox"/> 68Z
Scuff guards	<input type="checkbox"/> 59E	<input type="checkbox"/> 55D
Seat – Rear heavy-duty cloth	<input type="checkbox"/> 88C	<input type="checkbox"/> 88F
Side marker LED lamps – Fender	<input type="checkbox"/> 96E	–
Side marker LED lamps – Rear quarter glass	–	<input type="checkbox"/> 63L
Side marker LED lamps – Sideview mirrors	–	<input type="checkbox"/> 63B
Spot lamp, incandescent bulb – Driver and front-passenger ⁴	<input type="checkbox"/> 21P	<input type="checkbox"/> 51Z
Spot lamp, incandescent bulb – Driver only ⁴	<input type="checkbox"/> 21D	<input type="checkbox"/> 51Y
Spot lamp, LED bulb, Unity® – Driver and front-passenger	<input type="checkbox"/> 21B	<input type="checkbox"/> 51S
Spot lamp, LED bulb, Unity – Driver only	<input type="checkbox"/> 21L	<input type="checkbox"/> 51R
Spot lamp, LED bulb, Whelen® – Driver and front-passenger	<input type="checkbox"/> 21G	<input type="checkbox"/> 51V
Spot lamp, LED bulb, Whelen – Driver only	<input type="checkbox"/> 21F	<input type="checkbox"/> 51T
Spot lamp prep – Driver and front-passenger	<input type="checkbox"/> 21J	<input type="checkbox"/> 51W
Spot lamp prep – Driver only	<input type="checkbox"/> 21H	<input type="checkbox"/> 51P
Trunk/cargo area storage vault (includes lockable door)	<input type="checkbox"/> 19T	<input type="checkbox"/> 63V
Trunk circulation fan (wire harness not included)	<input type="checkbox"/> 97T	–
Trunk electronics tray	<input type="checkbox"/> 62D	–
Trunk release button (battery-powered)	<input type="checkbox"/> 62B	–
Underbody deflector plate	–	<input type="checkbox"/> 76D



NEW Front warning auxiliary lamps.



NEW Forward indicator pocket warning lamps.

PACKAGES

Refer to pages 24–29 for full descriptions.

	Sedan	Utility
Cargo Wiring Upfit Package	–	<input type="checkbox"/> 67G
Front Headlamp Lighting Solution	<input type="checkbox"/> 66I	<input type="checkbox"/> 66A
Headlamp Housing	<input type="checkbox"/> 13P	<input type="checkbox"/> 86P
Light Controller Package	<input type="checkbox"/> 855	–
Police Interior Upgrade Package	<input type="checkbox"/> 12P	<input type="checkbox"/> 65U
Police Wire Harness Connector Kit – Front	<input type="checkbox"/> 77E	<input type="checkbox"/> 47C
Police Wire Harness Connector Kit – Rear	<input type="checkbox"/> 51J	<input type="checkbox"/> 21P
Ready-for-the-Road Package	<input type="checkbox"/> 856	<input type="checkbox"/> 67H
Rear Lighting Solution	<input type="checkbox"/> 663	<input type="checkbox"/> 66C
NEW – Taillamp Housing	–	<input type="checkbox"/> 86T
Taillamp Lighting Solution	<input type="checkbox"/> 662	<input type="checkbox"/> 66B
Trunk Upfit Package	<input type="checkbox"/> 854	–
Ultimate Wiring Package	<input type="checkbox"/> 857	<input type="checkbox"/> 67U

VINYL COLOR TREATMENTS & WRAPS

	Sedan	Utility
Two-Tone Vinyl Package #1 (see page 30)	<input type="checkbox"/> 141	<input type="checkbox"/> 91A
Two-Tone Vinyl Package #2 (see page 30)	<input type="checkbox"/> 142	–
Two-Tone Vinyl Package #3 (see page 30)	<input type="checkbox"/> 143	<input type="checkbox"/> 91C
Vinyl word wrap – POLICE – on left and right sides of vehicle – non-reflective white	<input type="checkbox"/> 144	<input type="checkbox"/> 91D
Vinyl word wrap – POLICE – on left and right sides of vehicle – reflective black	<input type="checkbox"/> 145	<input type="checkbox"/> 91E
Vinyl word wrap – POLICE – on left and right sides of vehicle – reflective white	<input type="checkbox"/> 146	<input type="checkbox"/> 91F
Vinyl word wrap – SHERIFF – non-reflective white	<input type="checkbox"/> 147	<input type="checkbox"/> 91G
Two-tone vinyl front doors	<input type="checkbox"/> 149	<input type="checkbox"/> 91J
Two-tone vinyl roof	<input type="checkbox"/> 148	<input type="checkbox"/> 91H



NEW Remote Keyless Entry System key fob.⁵ (Utility only.)

DIMENSIONS & CAPACITIES⁶

	Sedan	Utility
EXTERIOR (in.)		
Length	202.9	197.1
Wheelbase	112.9	112.6
Width – Mirrors folded	77.3	82.5
Including mirrors	85.7	90.2
Height (excluding options)	61.3	69.2
Step-in height	16.6	18.9
Cargo rear opening height	–	32.5
Cargo rear opening width at floor	–	46.6
Liftover height (ground to cargo deck)	–	31.3
Liftgate to ground	–	74.2
Ground clearance	6.0; 5.3 (EcoBoost®)	6.5; 6.4 (EcoBoost)
INTERIOR (in.)		
Front		
Head room	39.0	41.4
Shoulder room	57.9	61.3
Hip room	56.3	57.3
Leg room	41.9	40.6
Rear		
Head room	36.7	40.1
Shoulder room	56.9	60.9
Hip room	55.9	56.8
Leg room	39.9	41.6
CAPACITIES		
Passenger volume (cu. ft.)	103.0	118.4
Trunk/cargo area volume with full-size spare (cu. ft.)	16.6	85.1 (behind 1st row) 48.1 (behind 2nd row)
Total interior volume (cu. ft.)	119.6	166.5
GVWR (lbs.)	5,460-5,700	6,342
Max. payload (lbs.)	1,220 (3.5L EcoBoost) 1,280 (3.5 Ti-VCT) 1,340 (3.7L AWD)	1,630; 1,580 (EcoBoost)
Cargo capacity (lbs.)	400	800
Fuel (gal.)	19.0	18.6
Seating	5	5



Select Option & Package Highlights

Confidence in the compatibility and capability of police equipment authorized by Ford. Components and installations are verified through the comprehensive Ford Quality System – for exacting evaluation in terms of crash testing, cycle testing, vibration testing, hot/cold testing, humidity testing, corrosion testing and the like.

FREE-STANDING OPTIONS

- A. Trunk electronics tray** – Aluminum, retractable locking tray installed at plant; no height adjustment (Sedan only)
- B. Auxiliary air conditioning** – Offers climate control for the rear cargo area; not available with storage vault (Utility only)
- C. Rear console plate** – Interfaces with front console mounting plate and extends through 2nd-row occupant area to seat bottom; acting as wiring conduit on top of transmission tunnel
- D. Trunk circulation fan** – Wired to ignition to turn on; circulates air from the cabin to the trunk; wiring harness not included (Sedan only)
- E. Trunk/cargo area storage vault** – Lockable; ideal for contraband/small arms; located on driver's side
- F. Hidden door lock plungers** – Manual lock rods; rear door handles inoperable
- G. 100-watt siren/speaker** – Includes wire
- H. Fender side marker LED lamps¹** – Backlit flashing, linear high-intensity (Sedan only)
- I. Rear quarter-glass side marker LED lamps¹** – Wide angle, backlit flashing, linear high-intensity (Utility only)
- J. Sideview mirror side marker LED lamps¹** – Backlit flashing, linear high-intensity (Utility only)
- K. Spot lamp** – High-intensity incandescent or LED (shown) with swivel mount

Pre-wiring for grille lamp, siren and speaker² – Electrical harness inlay (14290) includes: (2) light connectors that support up to (3) LED lights each (in engine compartment), (1) grille LED light connector that supports (2) LED lights, and (1) front driver's side speaker siren cable (not shown)

POLICE INTERIOR UPGRADE PACKAGE³ (Sedan 12P/Utility 65U)

- L. Cloth rear seat** – Heavy-duty fabric with Medium Dark Flint inserts
- M. Center floor console** – 2 cupholders and unique police finish
- Front and rear floor mats** – Carpeted and custom-fit (not shown)
- Front and rear carpeted floor covering** – Premium-grade (not shown)



Sedan (62D)



Utility (17A)



Sedan (97D)/Utility (85R)



Sedan (97T)



Sedan (shown)



Sedan (19T)



Utility (63V)



Sedan (63P)/Utility (52P)



Sedan (96P)/Utility (18X)



Sedan



Sedan (96E)



Utility (63L)



Utility (63B)



Sedan (21L)/Utility (51R)



Utility

HEADLAMP HOUSING (Sedan 13P/Utility 86P)



Sedan



Utility

Police front housing: Eliminates the need to drill or modify housing assemblies; with incremental hole for side marker lights.

FRONT HEADLAMP LIGHTING SOLUTION (Sedan 661/Utility 66A)



Sedan



Utility

Police headlamp: Includes base headlamp with high beam wig-wag function and (2) white LED side warning lights.

SIDE MARKER LED LAMPS (Sedan 96E/Utility 63L)



Sedan



Utility

Police side lamps: Fender side markers on the Sedan and rear quarter-glass side markers on the Utility feature backlit flashing, linear high-intensity LED lamps.

TAILLAMP LIGHTING SOLUTION (Sedan 662/Utility 66B)



Sedan



Utility

Police taillamp: Includes halogen base lamp, plus (2) integrated hemispheric lighthead LED side warning lights (Sedan with red lens; Utility with white lens).

REAR LIGHTING SOLUTION (Sedan 663/Utility 66C)



Sedan



Utility

Police back-window/liftgate-glass lights: Includes (2) backlit flashing, linear high-intensity LED lights with surround cover (driver's side red; passenger side blue) – Sedan lights are mounted inside of the back window and Utility lights are mounted on the inside of the liftgate glass.



Sedan



Utility

Police trunk/liftgate lights: Includes (2) backlit flashing, linear high-intensity LED lights (driver's side red; passenger side blue) – Sedan lights are mounted on the inside of the trunk decklid and Utility lights are installed on the inside lip of the liftgate. (Lights activate when trunk/liftgate is open.)



TRUNK UPFIT PACKAGE

(Sedan 854)

- A. Trunk electronics tray** – Aluminum, retractable locking tray installed at plant; no height adjustment
- B. Trunk circulation fan** – Wired to ignition to turn on; circulates air from the cabin to the trunk; wiring harness not included
- C. Rear console plate** – Interfaces with front console mounting plate and extends through 2nd-row occupant area to seat bottom; acting as wiring conduit on top of transmission tunnel
- D. Wiring harness** – Includes (2) light connectors – supports up to (3) LED lights each (engine compartment); (1) grille LED light connector – supports (2) LED lights; (2) 50-amp battery ground circuits in power distribution junction block (in-trunk); (1) 10-amp siren/speaker circuit (engine to trunk); trunk circulation fan maintains airflow from cabin to trunk; trunk electronics tray (4 sq. ft.) with 18" of travel when fully extended; and pre-wiring for grille LEDs and siren/speaker

LIGHT CONTROLLER PACKAGE

(Sedan 855)

- A. Trunk electronics tray** – Aluminum, retractable locking tray installed at plant; no height adjustment
- B. Trunk circulation fan** – Wired to ignition to turn on; circulates air from the cabin to the trunk
- C. Rear console plate** – Interfaces with front console mounting plate and extends through 2nd-row occupant area to seat bottom; acting as wiring conduit on top of transmission tunnel
- D. Wiring harness** – Includes (2) light connectors – supports up to (3) LED lights each (engine compartment); (1) grille LED light connector – supports (2) LED lights; (2) 50-amp battery ground circuits in power distribution junction block (in-trunk); (1) 10-amp siren/speaker circuit (engine to trunk); trunk circulation fan maintains airflow from cabin to trunk; trunk electronics tray (4 sq. ft.) with 18" of travel when fully extended; and pre-wiring for grille LEDs and siren/speaker
- E. Control system** – Includes PCC8R controller, control head, and wire

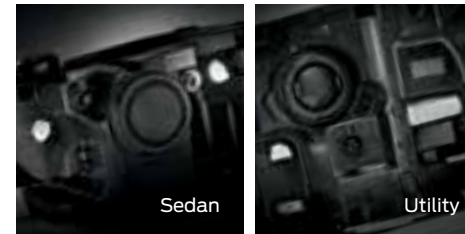
CARGO WIRING UPFIT PACKAGE

(Utility 67G)

- C. Rear console plate** – Interfaces with front console mounting plate and extends through 2nd-row occupant area to seat bottom; acting as wiring conduit on top of transmission tunnel
- D. Wiring harness** – Includes (2) light connectors – supports up to (6) LED lights (engine compartment); (2) grille light connectors; (2) 50-amp battery ground circuits in right-hand rear quarter power distribution junction block; and (1) 10-amp siren/speaker circuit (engine to cargo area)
- E. Control system** – Includes PCC8R controller, light relay center, control head, cable from controller to control head (console to cargo area), and wire

READY-FOR-THE-ROAD PACKAGE

(Sedan 856/Utility 67H)



Police headlamp housing: Eliminates the need to drill or modify housing assemblies; with incremental hole for side marker lights.



Police rear lighting: Includes (2) backlit flashing, linear high-intensity LED lights (driver's side red; passenger side blue) – Sedan lights are mounted on the inside of the trunk decklid and Utility lights are installed on the inside lip of the liftgate. (Lights activate when trunk/liftgate is open.)



Hidden door lock plunger: Manual lock rod; rear door handles inoperable.



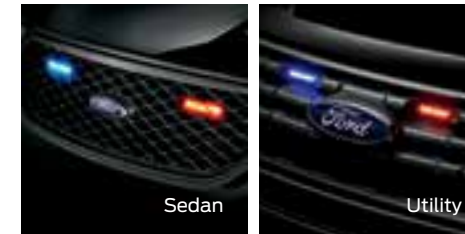
Police headlamp: Includes base headlamp with high beam wig-wag function and (2) white LED side warning lights.



Trunk storage vault (Sedan only): Lockable – ideal for contraband/small arms; located in driver's side of trunk.



100-watt siren/speaker: Includes wire.



Grille LED lights: Includes (2) backlit flashing linear high-intensity LED lights (driver's side red; passenger side blue).



Trunk electronics tray (Sedan only): Aluminum, retractable locking tray installed at plant; no height adjustment.



Control system: Includes CenCom™ controller, control head, and wire.



Police taillamp: Includes halogen base lamp, plus (2) integrated hemispheric lighthouse LED side warning lights (Sedan with red lens; Utility with white lens).



Trunk circulation fan (Sedan only): Wired to ignition to turn on; circulates air from the cabin to the trunk.



Wiring harness (Sedan): Includes (2) light connectors – supports up to (3) LED lights each (engine compartment); (1) grille LED light connector – supports (2) LED lights; (2) 50-amp battery ground circuits in power distribution junction block (in-trunk); (1) 10-amp siren/speaker circuit (engine to trunk); trunk circulation fan; trunk electronics tray (4 sq. ft.); and pre-wiring for grille LEDs and siren/speaker



Police rear lighting: Includes (2) backlit flashing, linear high-intensity LED lights with surround cover (driver's side red; passenger side blue). Sedan lights are mounted on the inside of the back window and Utility lights are mounted on the inside of the liftgate glass.



Rear console plate: Interfaces with front console mounting plate and extends through 2nd-row occupant area to seat bottom (acting as wiring conduit on top of transmission tunnel).



Wiring harness (Utility): Includes (2) light connectors – supports up to (6) LED lights (engine compartment); (2) grille light connectors; (2) 50-amp battery ground circuits in right-hand rear quarter power distribution junction block; and (1) 10-amp siren/speaker circuit (engine to cargo area)

Two-Tone Vinyl Color Treatments & Wraps¹

TWO-TONE VINYL PACKAGE #1 (Sedan 141/Utility 91A)

Vinyl on front doors, rear doors and roof. (Not available with Two-Tone Vinyl Package #2 or #3, or vinyl word wrap.)



TWO-TONE VINYL PACKAGE #2 (Sedan 142)

Vinyl on roof, hood and decklid. (Not available with Two-Tone Vinyl Package #1 or #3, or vinyl word wrap.)



TWO-TONE VINYL PACKAGE #3 (Sedan 143/Utility 91C)

Vinyl on front doors and roof. (Not available with Two-Tone Vinyl Package #1 or #2, or vinyl word wrap.)



TWO-TONE VINYL ROOF (Sedan 148/Utility 91H)

Vinyl on roof only.



TWO-TONE VINYL FRONT DOORS (Sedan 149/Utility 91J)

Vinyl on front doors only.



EXCLUSIVE "POLICE" AND "SHERIFF" VINYL WORD WRAPS

These bold graphics are stop-in-your-tracks arresting. The POLICE wrap comes in your choice of non-reflective white, reflective white or reflective black. And the SHERIFF wrap is offered in non-reflective white only. (Available on both the Sedan and Utility; not available with Two-Tone Vinyl Packages.)



Passenger side – Sedan (144)



Driver's side – Sedan (147)

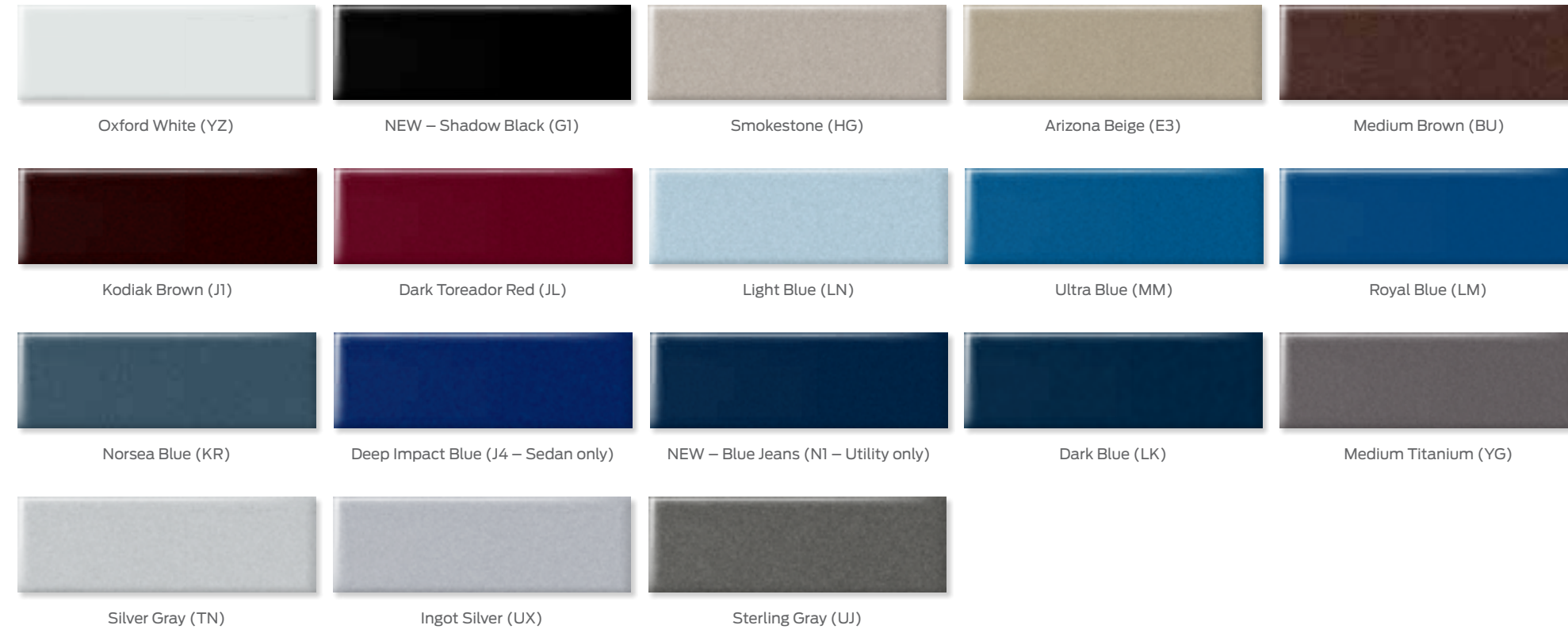


Passenger side – Utility (91D)

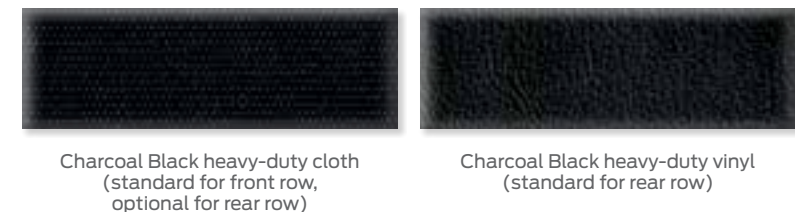


Driver's side – Utility (91G)

EXTERIOR COLORS



INTERIOR COLORS/FABRICS



VSO provides special paint and equipment options that are not currently available through regular – fleet-only – production. Visit fleet.ford.com/orders/vehicle-special-order for up-to-date offerings.

VSO color and equipment availability. The bright Fire Engine Red VSO paint finish is a popular choice. VSO lighting packages allow you to adhere to state law requirements.

New option development (VSO inquiries). Establishing new VSO options is initiated by a customer request called a “VSO inquiry.” Your dealer representative will submit the VSO inquiry. All requests are received, reviewed and approved by the VSO department to ensure the end product is compatible with regular and limited options. The end product must also meet Ford Motor Company standards of quality, durability, safety and performance.

Production timing. VSO vehicles with existing VSO options take 60-90 days to go from order receipt to production. For vehicles with newly developed VSO options, please include the development timing provided within the inquiry response. For your fleet planning purposes, VSO production typically begins a month after Job One and balances out a month prior to Job Last.

VSO EXTERIOR COLOR

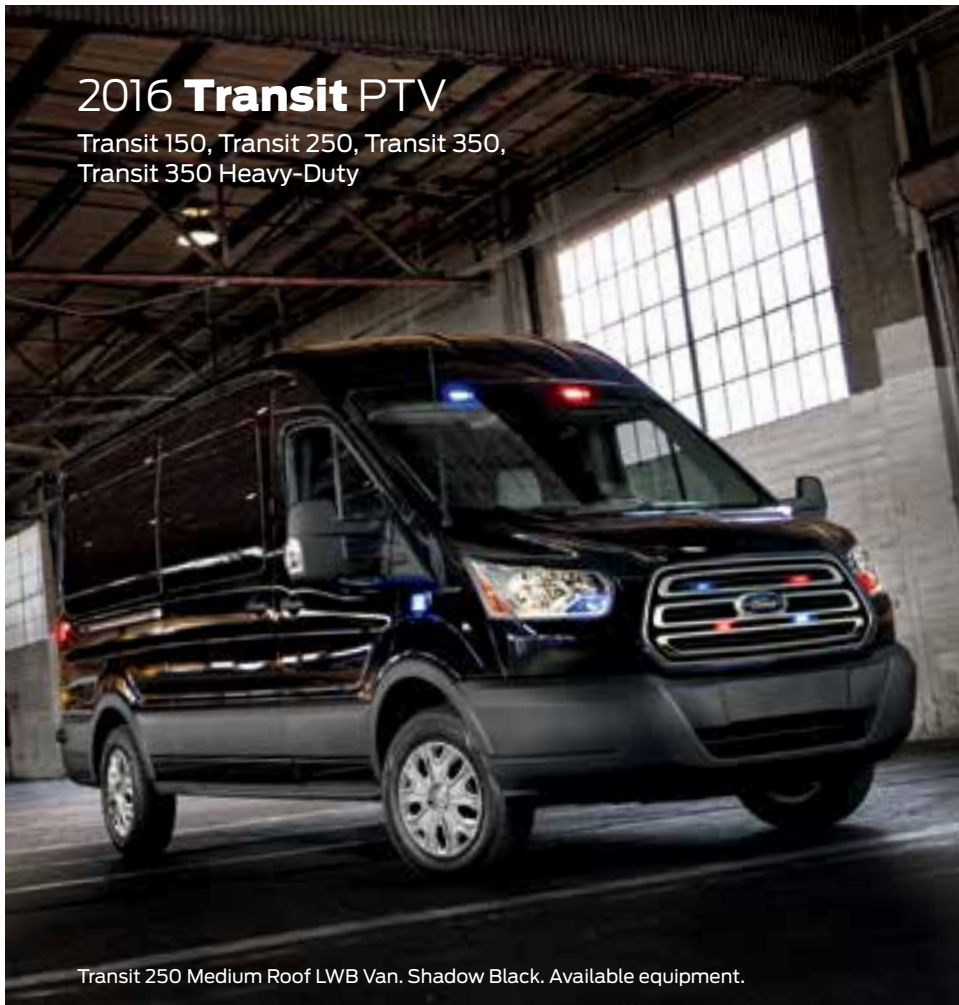


Fire Engine Red

VSO POLICE LIGHTING OPTIONS

- Grille LED lights – Red/red or blue/blue
- Rear LED lights – Red/red or blue/blue
- Side marker lights (Sedan only) – Red/red or blue/blue
- Sideview mirror lights (Utility only) – Red/red or blue/blue
- Front marker lights – Red/red, blue/blue or red/blue split
- Rear marker lights (Utility only) – Red/red, blue/blue or red/blue split
- Rear quarter lights (Utility only) – Red/red or blue/blue
- Front indicator pocket warning light – Red/red or blue/blue
- Forward warning auxiliary light – Red/red or blue/blue
- Front PTW (park/turn/wig wag) lights – Red/red or blue/blue

32 ¹To view all current and special paint options, have your dealer access the VSO order guide via fleet.ford.com. The guide is live and options are always up to date. NOTE: Because of occasional variations in printing, consult your Ford Dealer to ensure the true color choice you make is correct. Colors shown are representative only. Colors are metallic except for Oxford White and Shadow Black. See your dealer for actual paint/trim options. Visit fleet.ford.com for more information on colors and special paint options.



2016 Transit PTV

Transit 150, Transit 250, Transit 350,
Transit 350 Heavy-Duty

Transit 250 Medium Roof LWB Van. Shadow Black. Available equipment.

PRISONER TRANSPORT VEHICLE (PTV)

- Built Ford Tough® RWD lineup can be compartmentalized and customized with heating/cooling, lighting, surveillance cameras and more⁴
- Unibody construction with choice of 3 roof heights,² 3 lengths² and 3 powertrains² (including EcoBoost® and diesel options)
- CNG/Propane Gaseous Engine Prep Package conversion¹ and flex-fuel capability available for 3.7L Ti-VCT V6
- Maximum payload ratings of up to 4,560 lbs.^{2,3}

STANDARD FEATURES

12-volt powerpoints (2)
25-gallon fuel tank capacity
60/40 split side cargo door (Low Roof)
Air conditioning – Front only (manual)
Alternator – 150-amp
Engine – 3.7L Ti-VCT V6
Full-size spare wheel and tire
Grab handle on passenger-side A-pillar
Halogen headlamps
Mirrors – Short-arm, power sideview

STANDARD SAFETY & SECURITY

3-point safety belts for all seating positions
AdvanceTrac® with RSC® (Roll Stability Control™)
Airbags – Driver and front-passenger front, front-seat side, and Safety Canopy® System with side curtains

AVAILABLE FEATURES

3 body lengths: Regular, Long and Extended Length
3 roof heights: Low, Medium and High⁵
Alternator – Heavy-duty
Cruise control
Engine – 3.2L Power Stroke® I-5 Turbo Diesel
Engine – 3.5L EcoBoost V6
Engine block heater
Ford SYNC® 3
Ford Telematics™ powered by Telogis®⁶
Integrated trailer brake controller
Lane-keeping alert with driver alert
Message center – Level 1
Mirrors – Long-arm, power sideview
Mirrors – Long-arm, power, heated sideview with turn signal indicators

AVAILABLE PACKAGES⁷

Ambulance Prep Package (47B)
Cargo Area Load Compartment Lighting Package (LED) (85D)
CNG/Propane Gaseous Engine Prep Package (98C)
Exterior Upgrade Package (18D)

Power door locks
Power windows
Remote Keyless Entry System
Seating – Front bucket seats with adjustable head restraints (Includes driver's side inboard armrest)
Sliding passenger-side cargo door (Medium Roof and High Roof)
Tilt/telescoping steering column
Transmission – 6-speed SelectShift® automatic
Windshield wipers – Variable-intermittent

Brakes – 4-wheel disc with Anti-Lock Brake System (ABS)
Rear view camera
SOS Post-Crash Alert System™
Tire Pressure Monitoring System (excludes spare, SRW only)

Mirrors – Short-arm, power, heated sideview with turn signal indicators
MyKey®
Privacy glass
Reverse Sensing System
SecuriLock® Passive Anti-Theft System
Trailer wiring provisions
Upfitter switches (4)
Wheels – 16" aluminum

FLEET EXCLUSIVES

Daytime running lamps
Mirrors – Long-arm, manual sideview
Mirrors – Short-arm, manual sideview
Speed limitation – 65-, 70- and 75-mph

Heavy-Duty Trailer Tow Package (53B)
Interior Upgrade Package (96C)
Load Area Protection Package (96D)
Premium Package (96J)

DIMENSIONS & CAPACITIES⁸

WHEELBASE (in.)	150/250 SRW		150/250/350 SRW			250/350 SRW; 350 HD DRW
	Regular 130		Long 148			Long 148
	Low Roof	Medium Roof	Low Roof	Medium Roof	High Roof	High Roof
Roof height						
Passenger capacity	2	2	2	2	2	2
Rows of seats	1	1	1	1	1	1
EXTERIOR (in.)						
Wheelbase	129.9	129.9	147.6	147.6	147.6	147.6
Length	219.9	217.8	237.6	235.5	235.5	263.9
Height	83.6	100.8	83.2	100.7	110.1	109.4
Width – Excluding mirrors	81.3	81.3	81.3	81.3	81.3	83.7
Width – Including mirrors	97.4	97.4	97.4	97.4	97.4	97.4
Width – Mirrors folded	83.2	83.2	83.2	83.2	83.2	83.2
Front track	68.2	68.2	68.2	68.2	68.2	68.5
Rear track	68.6	68.6	68.6	68.6	68.6	65.7
Front overhang	40.3	40.3	40.3	40.3	40.3	40.3
Rear overhang	49.7	47.6	49.7	47.6	47.6	76.0
Load height (curb)	28.9	28.9	28.7	28.7	28.7	28.0
Side-door opening height	49.6	63.0	49.6	63.0	63.0	63.0
Side-door opening width – 60/40 swing-out	51.2	–	51.2	–	–	–
Side-door opening width – Sliding	51.2	51.2	51.2	51.2	51.2	51.2
Rear cargo door opening height	49.5	64.9	49.5	64.9	74.3	74.3
Rear cargo door opening width	61.7	61.7	61.7	61.7	61.7	61.7
INTERIOR (in.)						
Head room	40.8	52.0	40.8	52.0	56.6	56.6
Shoulder room	67.9	67.9	67.9	67.9	67.9	67.9
Hip room	67.5	67.5	67.5	67.5	67.5	67.5
Leg room (max.)	41.3	41.3	41.3	41.3	41.3	41.3
Passenger volume (cu. ft.)	63.7	81.1	63.7	81.1	88.3	88.3
Cargo length front (at floor)	126.0	126.0	143.7	143.7	143.7	172.2
Cargo length front (at belt)	115.9	115.9	133.6	133.6	133.6	162.0
Cargo width between wheelhouses	54.8	54.8	54.8	54.8	54.8	45.4
Cargo height maximum	56.9	72.0	56.9	72.0	81.5	81.5
CARGO CAPACITY (cu. ft.)						
Cargo volume behind 1st row	246.7	315.2	277.7	357.1	404.3	487.3
Maximum cargo volume with front-passenger seat removed	285.0	363.8	316.1	405.6	459.2	542.2

ENGINES

ENGINE	Horsepower (hp @ rpm)	Torque (lb.-ft. @ rpm)
3.7L Ti-VCT V6	275 @ 6,000	260 @ 4,000
3.5L EcoBoost V6	310 @ 5,500	400 @ 2,500
3.2L Power Stroke I-5 Turbo Diesel	185 @ 3,000	330 @ 1,500–2,500

EXTERIOR COLORS²



*Metallic.

INTERIOR COLORS²



Not rated for pursuit.

¹Through a Ford Qualified Vehicle Modifier. ²Available on select series. Restrictions may apply. See your dealer for details. ³When properly equipped. Cargo, load and trailer tow capacities limited by weight and weight distribution. ⁴Aftermarket upfit. ⁵High Roof not available on Transit 150. ⁶Ford Licensed Accessory. ⁷Visit fleet.ford.com for complete package content. See your dealer for details. ⁸Dimensions and capacities shown may vary due to optional features and/or production variability. Cargo and load capacity limited by weight and weight distribution. ⁹Fleet only.

2016 F-150 SSV

Available on XL (Fleet Exclusive)



F-150 XL SuperCrew® 4x4. Shadow Black. SSV Package. Available equipment.

SPECIAL SERVICE VEHICLE (SSV) PACKAGE (66S)

- Available on XL SuperCab and SuperCrew only
- 5.0L Ti-VCT 4-valve V8 FFV or 3.5L EcoBoost® 4-valve V6 engine (shown right)
- 240-amp alternator
- Cloth 40/blank/40 front seats (SG) with center-seat section deleted (restraint control module cover provided)
- Vinyl rear bench seat
- Column-mounted shifter

STANDARD FEATURES

- 12-volt powerpoint, front
- 23.0-gallon fuel tank capacity
- Black vinyl floor covering
- Cargo box tie-downs (4)
- Daytime running lamps – Controllable
- Easy Fuel® capless fuel filler
- Electronic shift-on-the-fly (ESOF) (4x4)

STANDARD SAFETY & SECURITY

- AdvanceTrac® with RSC® (Roll Stability Control™) and Curve Control
- Airbags – Front-seat side and Safety Canopy® System with side-curtain airbags and rollover sensor
- Belt-Minder® front safety belt reminder
- Brakes – Power 4-wheel vented disc with Anti-Lock Brake System (ABS)
- LATCH – Lower Anchors and Tether Anchors for Children

AVAILABLE PACKAGES¹

- CNG/Propane Gaseous Engine Prep Package (68G) (requires 5.0L engine)
- FX4 Off-Road Package (55A)
- Heavy-Duty Payload Package (627)
- Trailer Tow Package (53A)
- Max. Trailer Tow Package (53C)
- XL Chrome Appearance Package (86A)
- XL Power Equipment Group (85A)
- XL Sport Appearance Package (861)

- Ford SYNC® (XL 101A)
- Mirrors – Power sideview (XL 101A)
- Power windows and door locks (XL 101A)
- Quick-release tailgate with lock and tailgate assist
- Transmission – 6-speed SelectShift® automatic with progressive range select and tow/haul mode (not available with 3.5L Ti-VCT engine)

- MyKey® (XL 101A)
- Personal Safety System™ for driver and right-front passenger with dual-stage front airbags
- Remote Keyless Entry System (XL 101A)
- SecuriLock® Passive Anti-Theft System
- SOS Post-Crash Alert System™
- Tire Pressure Monitoring System (excludes spare)
- Trailer sway control

FLEET EXCLUSIVES

- AM/FM stereo/single-CD player with clock and 6 speakers (58B)
- Backup alarm system (85H)
- Cruise control (50S)
- Daytime running lamps – Non-controllable (942)
- Engine block heater (41H)
- Fixed rear window with privacy glass and defroster (924/57Q)
- Full-coverage rubber floor mats (47R)
- Mirrors – Manual-folding, power, heated sideview with integrated turn signal indicators, high-intensity LED security approach lamps, LED spotlights, driver's side auto-dimming feature, and black mirror caps (54R/59S)
- Power-sliding rear window with privacy glass and defrost (924/435/57Q)
- Rear view camera with Dynamic Hitch Assist (XL 100A; requires Power Equipment Group) (76C)
- Skid plates (4x4) (413)
- SYNC (XL 100A) (52B)
- Tires – LT245/70R17E BSW all-terrain (T7C)
- Wheels – 18" Silver heavy-duty aluminum (64H)

AVAILABLE FEATURES

- BoxLink™ with 4 premium locking cleats
- Class IV trailer hitch
- Fog lamps
- Ford Telematics™ powered by Telogis®²
- Integrated trailer brake controller
- Plastic drop-in bedliner

- Rear view camera with dynamic hitch assist
- Reverse Sensing System
- Snow plow prep
- Spray-in bedliner
- Tailgate step includes step, grab bar and tailgate lift assist

CARGO AREA

CARGO AREA (in.)	5½' Styleside Box	6½' Styleside Box	8' Styleside Box
Length at floor	67.1	78.9	97.6
Width at wheelhouse	50.6	50.6	50.6
Maximum width inside box	65.2	65.2	65.2
Volume (cu. ft.)	52.8	62.3	77.4

ENGINES

ENGINE	Transmission (with tow/haul mode)	Horsepower (hp @ rpm)	Torque (lb.-ft. @ rpm)
3.5L EcoBoost 4-valve V6	6-speed automatic	365 @ 5,000	420 @ 2,500
5.0L Ti-VCT 4-valve V8 FFV	6-speed automatic	385 @ 5,750	387 @ 3,850

DIMENSIONS & CAPACITIES

DIMENSIONS (in.)	SuperCab		SuperCrew	
	6½' Box	8' Box	5½' Box	6½' Box
Wheelbase	145.0	163.7	145.0	156.8
Length	231.9	250.5	231.9	243.7
Height	75.5/77.2	75.5/77.0	75.6/77.2	75.7/77.3
Width (excluding mirrors)	79.9	79.9	79.9	79.9
CAPACITIES	Passenger volume (cu. ft.) Total		Passenger volume (cu. ft.) Total	
	116.0	116.0	131.8	131.8
Fuel (gal.)	23.0	23.0	23.0	23.0
	(36.0 optional)	(36.0 optional)	(36.0 optional)	(36.0 optional)
Payload ³ (lbs.)	2,310/2,200		2,150/2,100	
	2,970/2,730		2,910/2,660	

Dimensions and capacities shown may vary due to optional features and/or production variability.

EXTERIOR COLORS⁴



*Metallic.

INTERIOR COLORS⁴



2016 Expedition/Expedition EL SSV

Available on XL (Fleet Exclusive)



Expedition EL XL. Shadow Black. SSV Package. Available equipment.

SPECIAL SERVICE VEHICLE (SSV) PACKAGE (102A)

- 17" steel wheels (265/70R17 AT OWL)
- 3.73 limited-slip rear axle
- 4x4 skid plates
- Front tow hooks
- Less running boards
- Black exterior door handles and grille
- Cloth 1st-row/vinyl 2nd-row seating
- 3rd-row seat delete with cover/end cap
- 3rd-row storage bins
- Column shifter
- Floor console delete
- Vinyl floor covering

STANDARD FEATURES

12-volt powerpoints (3)
150-amp heavy-duty alternator
Air conditioning with rear auxiliary controls
Audio – AM/FM stereo
Automatic quad-beam reflector headlamps with rainlamp
Control Trac® 4WD (4x4 models only)
Cruise control
Easy Fuel® capless fuel filler
Electric power-assisted steering (EPAS)
Engine – 3.5L EcoBoost® V6
Integrated Class IV Trailer Tow Package

STANDARD SAFETY & SECURITY

3-point safety belts for all seating positions
AdvanceTrac® with RSC® (Roll Stability Control™)
Airbags – Dual-stage front
Airbags – Front-seat side
Airbags – Safety Canopy® System with side-curtain airbags and rollover sensor
Anti-theft perimeter alarm
Belt-Minder® front safety belt reminder
Brakes – 4-wheel disc with Anti-Lock Brake System (ABS)
Child-safety rear door locks

AVAILABLE FEATURES

FLEET EXCLUSIVES
Daytime running lamps (43D)
Engine block heater (41H)
Fleet Convenience Package (50F)
Ford SYNC® (52M)
Running boards (186)

Mirror – Auto-dimming rearview
Mirrors – Black, power, heated sideview with integrated blind spot mirrors and security approach lamps
MyKey®
Power windows and door locks with one-touch-up/-down driver's side window feature
Rear-wheel drive (RWD)
Seats – 1st-row buckets with recline and 6-way power driver's with manual lumbar support; 2nd-row 40/20/40 split (CenterSlide®) with recline
Tilt/telescoping steering column
Transmission – 6-speed SelectShift® automatic

LATCH – Lower Anchors and Tether Anchors for Children
Rear view camera
Remote Keyless Entry System
SecuriCode™ keyless entry keypad
SecuriLock® Passive Anti-Theft System
SOS Post-Crash Alert System™
Tire Pressure Monitoring System (excludes spare)
Traction control
Trailer sway control

Seat – 2nd-row 40/20/40 split bench (cloth) (21F)
Seat – 3rd-row 60/40 split manual bench (vinyl) (875)
SSV Upgrade Package (65C)

AVAILABLE PACKAGE^{1,2}

Heavy-Duty Trailer Tow Package (536)

DIMENSIONS & CAPACITIES³

DIMENSIONS (in.)	Expedition	Expedition EL
Length	206.0	220.8
Wheelbase	119.0	131.0
Width – Excluding mirrors	78.8	78.8
Including mirrors	91.8	91.8
Mirrors folded	79.7	79.7
Height	77.2	77.7 (4x2); 78.3 (4x4)
Minimum running ground clearance	8.3 (4x2); 8.0 (4x4)	8.3 (4x2); 8.0 (4x4)
Liftover height	34.1 (4x2); 34.0 (4x4)	34.1
Cargo rear opening height	34.6	34.1
Cargo rear opening width at floor	56.7	56.7

CAPACITIES (cu. ft.)	Expedition	Expedition EL
Cargo volume – Behind 1st row	108.3	130.8
Behind 2nd row	55.0	85.5
Behind 3rd row (if equipped)	18.6	42.6
Fuel (gal.)	28.0	33.5
Seating	5, 8	5, 8

ENGINE

	3.5L EcoBoost V6
Horsepower (hp @ rpm)	365 @ 5,000 ⁴
Torque (lb.-ft. @ rpm)	420 @ 2,250 ⁴

TRAILER WEIGHT RATINGS⁵

Hitch Class	Maximum Load (lbs.)	
	Expedition	Expedition EL
4x2 Class IV	9,200	9,200
4x4 Class IV	9,200	9,100

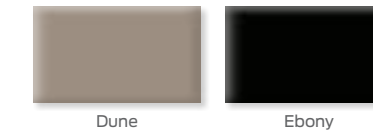
Maximum weights shown are for properly equipped vehicles with required equipment and a 150-lb. driver. Weight of additional options, equipment, passengers and cargo must be deducted from this weight. For additional information, see your dealer. Cargo and load capacity limited by weight and weight distribution.

EXTERIOR COLORS¹



*Metallic.

INTERIOR COLORS¹



More Choices

Full family of vehicles to meet your diversified needs. Ford Fleet offers you a balanced, high-quality portfolio: Fiesta, Focus, Focus Electric, C-MAX Hybrid, C-MAX Energi, Mustang, Fusion, Fusion Hybrid, Fusion Energi, Taurus, Escape, Edge, Explorer, Flex and Transit Connect. Visit fleet.ford.com for details.



Fusion Hybrid Titanium. Ingot Silver. Available equipment.



Escape Titanium. Sunset. Available equipment.



Transit Connect XLT Van. Dark Blue. Available equipment.

HOW MANY UNITS WILL YOU BE ABLE TO ADD TO YOUR FLEET THIS YEAR?

The Ford Credit Municipal Lease Purchase Finance Program is a flexible funding plan available to state and local governments that will let you acquire the units you need when you need them.



BENEFITS

- Maximize limited budget funds – typically, you can get the benefit of cost-efficient tax-exempt financing
- Avoid the high cost and downtime of maintaining older high-mileage vehicles
- Add units to your fleet with current technology
- Finance add-on equipment, upfits and extended warranty plans
- No down payment or security deposit required
- Accumulate equity with each payment, and realize ownership at lease-end
- Flexible payment schedules, including monthly, quarterly or annual payments, can be arranged to meet your needs

Best of all – Ford Credit Municipal Finance Specialists will assist you in handling the transaction from start to finish.

LEARN MORE

Ford Motor Credit Company LLC is not acting as a municipal advisor or financial advisor, and has no fiduciary duty to you pursuant to Section 15B of the Securities Exchange Act of 1934. The information contained in this brochure is not intended to be and should not be construed as “advice” within the meaning of Section 15B of the Securities Exchange Act of 1934 and the municipal advisor rules of the SEC.

Contact your Ford Credit Municipal Lease Specialist at 1-800-241-4199 or visit:

- www.credit.ford.com/municipal-finance
- www.credit.ford.com/doc/Giveyourbudgetaboost
- www.credit.ford.com/doc/Increase_the_Fleet.pdf

OPTION A: Purchase today in cash¹



OPTION B: Purchase with the Ford Credit Municipal Lease/Purchase Finance Program.



NOTE: Vehicles shown for illustrative purposes only.

FORD PROTECT IS AVAILABLE FOR ALL FORD SPECIAL SERVICE VEHICLES

Upgrade your protection: Select the extended warranty that best suits your needs. There are 4 plans available that wrap around or extend the powertrain warranty – PowertrainCare, BaseCare, ExtraCare, PremiumCare – with comprehensive coverage for up to 8 years and 150,000 miles on new vehicles. In addition, drop-off first-day rental is included on all plans.

GENUINE FORD COLLISION REPLACEMENT PARTS

Dependability is crucial. To do your job, you depend on every piece of your equipment to function as it was designed. The same goes for your police unit, and if you're ever in an accident, you can depend on genuine Ford collision replacement parts: sheet metal, bumpers and lights to help restore your vehicle to pre-accident condition. Genuine Ford collision parts are equal in quality, fit and structural integrity to the original parts that came on your vehicle because they are the same parts used in the production of new vehicles. Designed, engineered, and produced by Ford Motor Company to meet Federal Motor Vehicle Safety Standards. Cheap imitation parts can't make that claim. So don't settle for anything less dependable than genuine Ford collision replacement parts.

QUALITY FLEET CARE (QFC)

Quality Fleet Care is a centralized billing service you can use to make a single monthly payment on behalf of your entire fleet for maintenance and repairs performed at participating Ford Dealers and Quick Lane Tire & Auto Centers. Over-the-counter parts purchases at participating Ford Dealers can also be included. There is no enrollment fee, no per-vehicle fee and no administration fee for warranty-covered repairs. Plus, you preset your drivers' spending limits, which cannot be exceeded without your approval. Visit qfc.ford.com or call 1-800-367-3221 for more information.

Elite Police Advisory Board

An industry first. Acting as a liaison and resource for law-enforcement agencies nationwide, the Police Advisory Board (PAB) provides frank and direct feedback on the products, programs and policies of Ford. These standout officials help refine current vehicles and create future offerings. Input on safety, reliability and durability is essential to serving unique operational needs, and proves invaluable to the ongoing development of Ford Police Interceptors and Special Service Vehicles. Please visit fleet.ford.com for more PAB specifics.



RICK AMELOOT
Ontario Provincial Police
rick.ameloot@opp.ca
705.826.6933



ANDRE BONIECKI
Royal Canadian Mounted Police
andre.boniecki@rcmp-grc.gc.ca
613.843.3771



KARL BRENNER
Massachusetts State Police
karl.brenner@state.ma.us
508.820.2270



LARRY CAMPBELL
City of Fort Wayne
larry.campbell@cityoffortwayne.org
260.427.5291



JOHN CROOP
Kent State University
jcroop@kent.edu
330.672.0818



DAVID DO
Los Angeles County Sheriff's Department
dcdo@lasd.org
323.881.3982



JERRY DOUGHERTY
Pennsylvania State Police
gerdougher@pa.gov
717.705.5928



SCOTT EARL
Unified Police of Greater Salt Lake
searl@updsl.org
801.599.4240



JASON GRIFFIN
Texas Department of Public Safety
jason.griffin@dps.texas.gov
254.793.2267



RANDY HAHN
Alaska State Troopers
randal.hahn@alaska.gov
907.269.5648



DAVID (DOC) HALLIDAY (RET.)
Michigan State Police
dhalliday430@gmail.com
517.256.3689



JASON HUSBY
South Dakota Highway Patrol
jason.husby@state.sd.us
605.773.5481



PAUL KOCH
City of Cape Coral
paulkoch@nc.rr.com
239.574.0703



MIKE MCCARTHY
Michigan State Police
mccarthym4@michigan.gov
517.322.1787



STEVE MILLS
California Highway Patrol
stmills@chp.ca.gov
916.376.3535



DAVE MOTOLA
City of Miami Gardens
dmotola@miamigardens-fl.gov
954.816.2491



WAYNE NERO
Georgetown Police Department
wayne.nero@georgetown.org
512.930.8450



KEVIN RAUSIS
San Diego Police Department
krausis@pd.sandiego.gov
619.871.7989



TODD REVELL
Springfield Missouri Police Department
trevell@springfieldmo.gov
417.864.1742



ED SANOW
Law and Order Magazine
esanow@hendonpub.com
765.491.1327



JIM TUROW
Guelph Police
jturow@guelphpolice.ca
519.824.1212 x7258



LOGAN WERNET
Mason City Police
lwernet@masoncity.net
641.494.3565



SEAN WILLIAMS
Collier County Sheriff's Office
sean.williams@colliersheriff.org
239.253.5361



KENNETH WYATT
Prince George's County, MD
klwyatt@co.pg.md.us
301.808.1722



VARTAN YEGHIYAN
Los Angeles Police Department
vartan.yeghyan@lapd.lacity.org
213.486.7060