

# 2023 Table Of Contents

Attachment  
December 9, 2022

<b>SUBJECT</b>	<b>PAGE</b>
World Manufacturer Identifier	2
Restraints & Brakes	3
Check Digit & Model Year	4
Assembly Plant & Serialization	5
Generic Passenger Car Format	6
Ford Mustang	7
Generic Truck, Bus, MPV Format	8
Ford Bronco	9
Ford Bronco Sport	10
Ford Econoline	11
Ford Edge	12
Ford Escape	13
Ford Expedition	14
Ford Explorer	15
Ford F-150	16
Ford F-150 BEV	17
Ford Maverick	18
Ford Motorhome-Stripped Chassis	19
Ford Mustang Mach-E	20
Ford Ranger	21
Ford Super Duty F-250 and F-350	22
Ford Super Duty F-450, F-550, and F-600	23
Ford Super Duty F-650 and F-750	24
Ford Transit	25-26
Ford Transit Connect	27
Lincoln Aviator	28
Lincoln Corsair	29
Lincoln Nautilus	30
Lincoln Navigator	31

## 2023 World Manufacturer Identifier

Attachment  
January 20, 2022

### World Manufacturer Identifier (VIN Positions 1, 2, and 3)

Code	Manufacturer	Type
<b>Passenger Cars</b>		
1FA	Ford Motor Company, USA	Passenger Car
<b>Generic Truck, Bus, MPV Format</b>		
1FB	Ford Motor Company, USA	Bus
1FM	Ford Motor Company, USA	Multipurpose Passenger Vehicle
1FT	Ford Motor Company, USA	Truck - Completed Vehicle
2FM	Ford Motor Company of Canada, Ltd.	Multipurpose Passenger Vehicle
2LM	Ford Motor Company of Canada, Ltd.	Multipurpose Passenger Vehicle
3FM	Ford Motor Company, Mexico	Multipurpose Passenger Vehicle
3FT	Ford Motor Company, Mexico	Truck - Completed Vehicle
5LM	Ford Motor Company, USA	Multipurpose Passenger Vehicle
NM0	Ford Motor Company, Europe	Truck - Completed Vehicle
<b>Incomplete Vehicles</b>		
1FC	Ford Motor Company, USA	Basic (Stripped) Chassis
1F6	Detroit Chassis LLC, USA	Basic (Stripped) Chassis
1FD	Ford Motor Company, USA	Incomplete Vehicle
5LD	Ford Motor Company, USA	Incomplete Vehicle - Limousine

2023 Restraints & Brakes

**Restraint, Brake System and GVWR Class**  
(VIN Position 4)

Vehicle Type	Brake System	GVWR Class **	GVWR Range	1	2	3	4	5	6	7	8	9	10	11	12	13	14	15	16	17
Passenger Car	-	-	-	K		F	B	H		6	D	U	5				G			
MPV, Truck	Hydraulic	Class A:	Less than 3,000 pounds																	
Generic Passenger Car Format	Hydraulic	Class B:	3,001-4,000 pounds		A	B				3										
MPV, Truck	Hydraulic	Class C:	4,001-5,000			Y	K	A		6	C				7					
MPV, Truck	Hydraulic	Class D:	5,001-6,000			Z	L	D	G	P	T	U	S		8					4
MPV, Truck	Hydraulic	Class E:	6,001-7,000		R	6	M	E	H	B	F		5	2						K
MPV, Truck	Hydraulic	Class F:	7,001-8,000	B	V	R	N	F	J		H		Y					W		
MPV, Truck	Hydraulic	Class G:	8,001-8,500				P	V												
Truck, Bus	Hydraulic	Class G:	8,501-9,000	H	C	N	Y	6	Z								K			1
Truck, Bus	Hydraulic	Class H:	9,001-10,000	J	D	S	B	7	A								L			2
Truck, Bus	Hydraulic	Class 3:	10,001-14,000	K	E	W	R	8	V								M			3
Truck, Bus	Hydraulic	Class 4:	14,001-16,000	L	F	X	T	9												4
Truck, Bus	Hydraulic	Class 5:	16,001-19,500	M	G	A	U	0												5
Truck, Bus	Hydraulic	Class 6:	19,501-26,000	N			F													6
Truck, Bus	Hydraulic	Class 7:	26,001-33,000	P																
Truck, Bus	Air	Class 6:	19,501-26,000	W																
Truck, Bus	Air	Class 7:	26,001-33,000	X																
Truck, Bus	Air	Class 8:	33,001-55,000	Y																

Restraint Category	Restraint Devices and Location
1	Manual Belts WITHOUT Air Bags
2	Manual Belts with Driver Frontal Air Bag ONLY
3	Manual Belts with Driver and Passenger Frontal Air Bags
4	Manual Belts with Driver and Passenger Frontal Air Bags and Side Inflatable Restraint (1st row)
5	Manual Belts with Driver and Passenger Frontal Air Bags and Side Inflatable Restraint (1st & 2nd Row)
6	Manual Belts with Driver and Passenger Frontal Air Bags and Side Inflatable Restraint (1st, 2nd, 3rd Row & add'l rows)
7	Manual Belts with Driver and Passenger Frontal Air Bags and Side Inflatable Restraint (1st & 2nd Row) and Driver/Passenger Knee Restraints
8	Manual Belts with Driver and Passenger Frontal Air Bags and Side Inflatable Restraint (1st & 2nd Row) and Driver Knee Restraint
9	Manual belts with Driver and Passenger Frontal Air Bags and Side Inflatable Restraint (1st, 2nd, &3rd Row) and Driver Knee Restraint
10	Manual belts with Driver and Passenger Frontal Air Bags and Side Inflatable Restraint (1st, 2nd, &3rd Row) and Passenger Knee Restraint NOTE: 2020-2023 Explorer/Aviator receive Driver Knee Airbag (Non-European Units)
11	Manual belts with Driver and Passenger Frontal Air Bags and Side Inflatable Restraint (1st, 2nd, &3rd Row) and Passenger Knee Restraint NOTE: Used for 2020-2023 Explorer Europe Only
12	Manual Belts with Driver Only Frontal Air Bags and Driver Only Side Inflatable Restraint (1st Row)
13	Manual Belts with Driver Only Frontal Airbags and Side Inflatable Restraints (1st Row)
14	Manual Belts with Driver and Passenger Frontal Air Bags and Side Inflatable Restraint (1st Row) and Driver/Passenger Knee Restraints
15	Manual Belts with Driver and Passenger Frontal Air Bags and Driver Knee Restraint
16	Manual Belts with Driver and Passenger Frontal Air Bags and Side Inflatable Restraint (1st Row) and Driver Knee Restraint
17	No Restraints

# 2023 Check Digit & Model Year

Attachment  
January 20, 2022

## Check Digit (VIN Position 9)

See Paragraph 565.15 of Part 565.  
The check digit must have a value of 0, 1, 2, 3, 4, 5, 6, 7, 8, 9, or X.

## Vehicle Model Year (VIN Position 10)

<u>VIN Code</u>	<u>YEAR</u>	<u>VIN CODE</u>	<u>YEAR</u>
4	2004	N	2022
5	2005	<b>P</b>	<b>2023</b>
6	2006	R	2024
7	2007	S	2025
8	2008	T	2026
9	2009	V	2027
A	2010	W	2028
B	2011	X	2029
C	2012	Y	2030
D	2013	1	2031
E	2014	2	2032
F	2015	3	2033
G	2016	4	2034
H	2017	5	2035
J	2018	6	2036
K	2019	7	2037
L	2020	8	2038
M	2021	9	2039

**Vehicle Assembly Plant  
(VIN Position 11)**

CODE	Vehicle Assembly Plant Name: Location
B	Oakville: Oakville, Ontario
D	Ohio Assembly: Avon Lake, Ohio
E	Kentucky Truck: Louisville, Kentucky
F	Dearborn: Dearborn, Michigan
G	Chicago: Chicago, Illinois
K	Kansas City; Claycomo, Missouri
L	Michigan Assembly: Wayne, Michigan
M	Cuautitlan: Cuautitlan, Mexico
N	Chicago SHO Center, Chicago, Illinois
R	Hermosillo: Hermosillo, Mexico
W	Rouge Electric: Dearborn, MI
0	Detroit Empowerment Zone: Detroit, MI
5	Flat Rock Assembly Plant (AAI): Flat Rock, MI
1	Valencia Assembly Plant; Valencia, Spain
U	Louisville Assembly Plant: Louisville, Kentucky
4	Saarlouis Assembly Plant; Saarlouis, Germany

\* Detroit Chassis LLC and MSX International

**Sequential Vehicle Identifier  
(VIN Positions 12 through 17)**

**Passenger Cars:**

A unique six digit numeric sequence code is assigned to each passenger car by the vehicle assembly plant of manufacture.

100001 thru 599999

**Trucks, MPVs, Buses and Incomplete Vehicles:**

A unique six digit alphanumeric sequence code is assigned for trucks, buses, MPV's, and related incomplete vehicles.

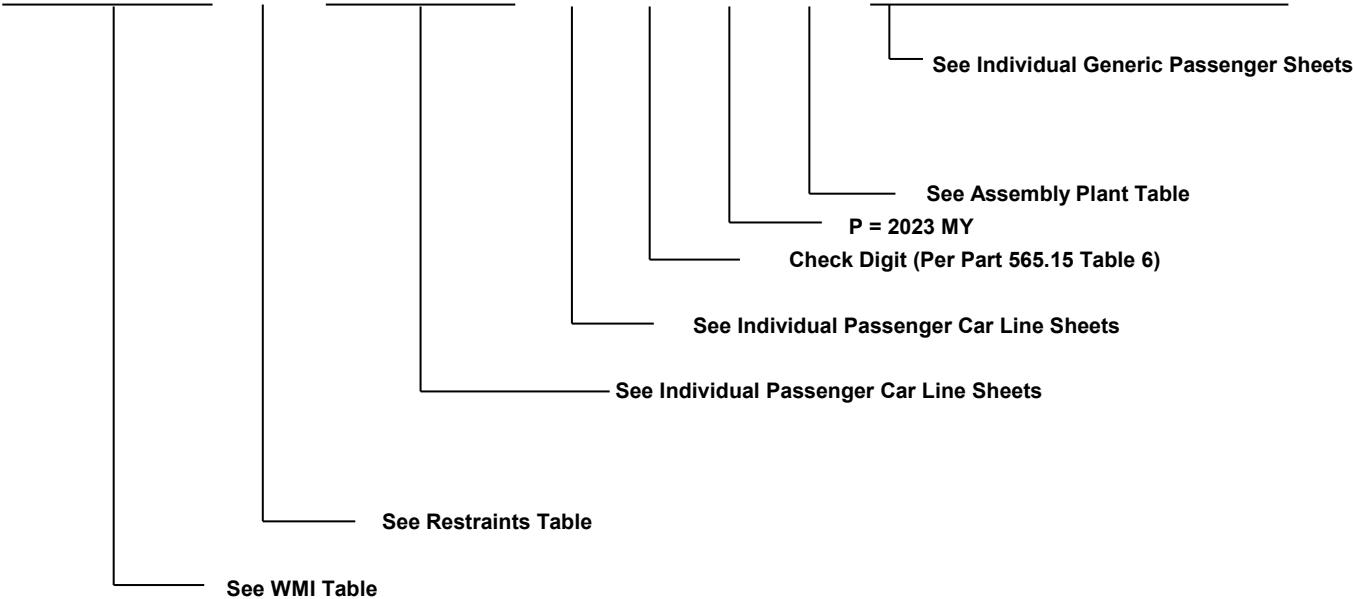
A00001 thru H99999 - Ford Division Vehicles  
L00001 thru L99999 - Lincoln Division Vehicles

# 2023 Generic Passenger Car Format

Attachment  
January 20, 2022

World Manufacturer Identifier (WMI)			Restraint System Category	Make, Car Line, Series, Body Type			Engine Type - Displacement, Cylinders, Fuel Type Manufacturer and Horsepower	VIN Check Digit (0-9 or X)	Vehicle Model Year	Plant of Manufacture	Numerical Sequence Vehicle Identifier					
1	2	3	4	5	6	7	8	9	10	11	12	13	14	15	16	17

?	?	?	?	?	?	?	?	?	P	?	?	?	?	?	?	?
---	---	---	---	---	---	---	---	---	---	---	---	---	---	---	---	---

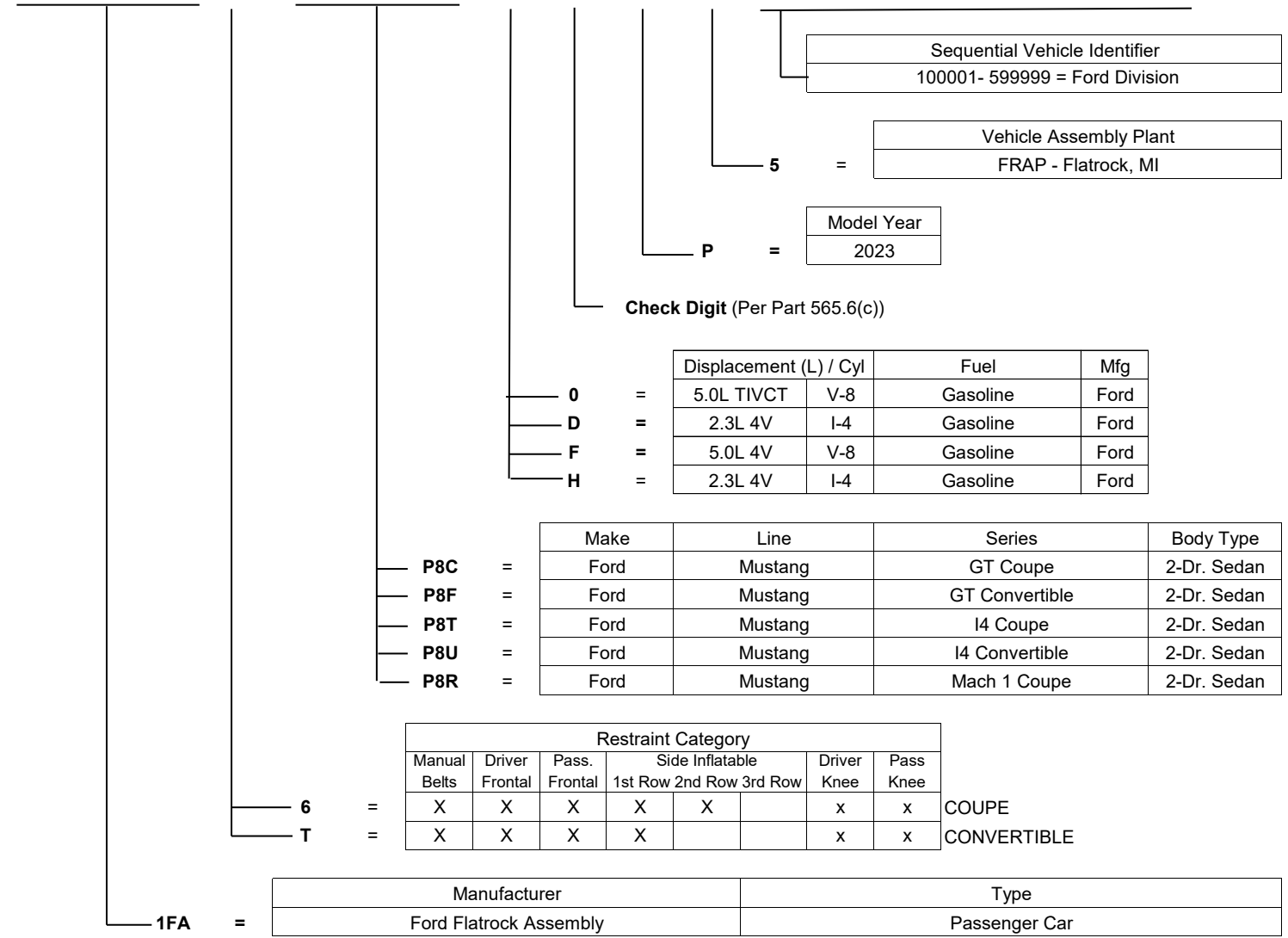


# 2023 Ford Mustang

Attachment  
December 9, 2022

World Manufacturer Identifier (WMI)			Restraint System Category	Make, Car Line, Series, Body Type			Engine Type - Displacement, Cylinders, Fuel Type, Manufacturer, and Horsepower	VIN Check Digit (0-9 or X)	Vehicle Model Year	Plant of Manufacture	Numerical Sequence Vehicle Identifier					
1	2	3	4	5	6	7	8	9	10	11	12	13	14	15	16	17

1	F	A	?	P	8	?	?	?	P	5	?	?	?	?	?	?
---	---	---	---	---	---	---	---	---	---	---	---	---	---	---	---	---



Sequential Vehicle Identifier  
100001- 599999 = Ford Division

Vehicle Assembly Plant  
FRAP - Flatrock, MI

Model Year  
2023

Check Digit (Per Part 565.6(c))

	Displacement (L) / Cyl	Fuel	Mfg
0	5.0L TIVCT V-8	Gasoline	Ford
D	2.3L 4V I-4	Gasoline	Ford
F	5.0L 4V V-8	Gasoline	Ford
H	2.3L 4V I-4	Gasoline	Ford

	Make	Line	Series	Body Type
P8C	Ford	Mustang	GT Coupe	2-Dr. Sedan
P8F	Ford	Mustang	GT Convertible	2-Dr. Sedan
P8T	Ford	Mustang	I4 Coupe	2-Dr. Sedan
P8U	Ford	Mustang	I4 Convertible	2-Dr. Sedan
P8R	Ford	Mustang	Mach 1 Coupe	2-Dr. Sedan

Restraint Category							
Manual Belts	Driver Frontal	Pass. Frontal	Side Inflatable			Driver Knee	Pass Knee
			1st Row	2nd Row	3rd Row		
X	X	X	X	X		x	x
X	X	X	X			x	x

COUPE  
CONVERTIBLE

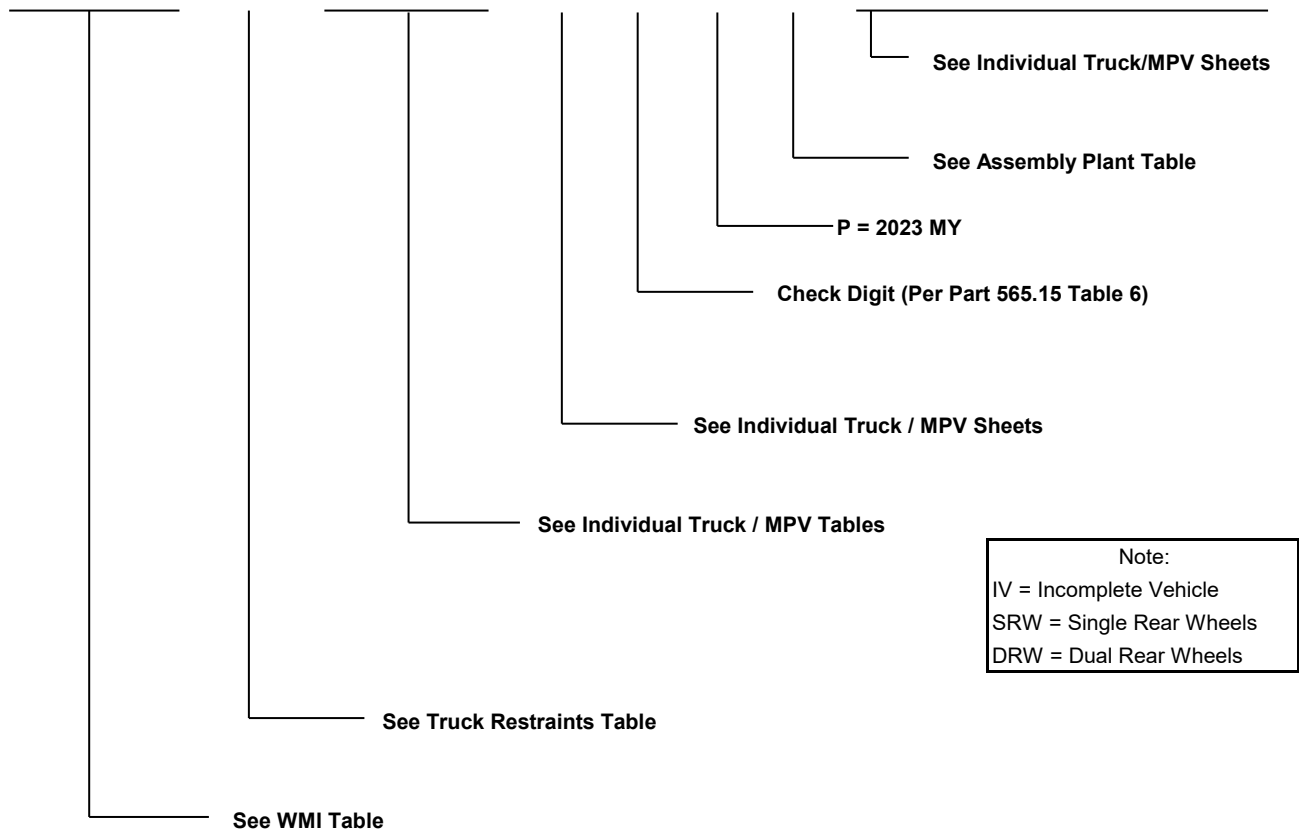
Manufacturer	Type
Ford Flatrock Assembly	Passenger Car

# 2023 Generic Truck, Bus, MPV Format

Attachment  
January 20, 2022

World Manufacturer Identifier (WMI)			Brake System / GVWR / Restraint System Category	Make, Line, Series, Chassis Type, Cab or Body Type, Vehicle Type			Engine Type - Displacement, Cylinders, Fuel Type Manufacturer and Horsepower	VIN Check Digit (0-9 or X)	Vehicle Model Year	Plant of Manufacture	Alphanumeric Sequence Vehicle Identifier					
1	2	3	4	5	6	7	8	9	10	11	12	13	14	15	16	17

?	?	?	?	?	?	?	?	?	N	?	?	?	?	?	?	?
---	---	---	---	---	---	---	---	---	---	---	---	---	---	---	---	---

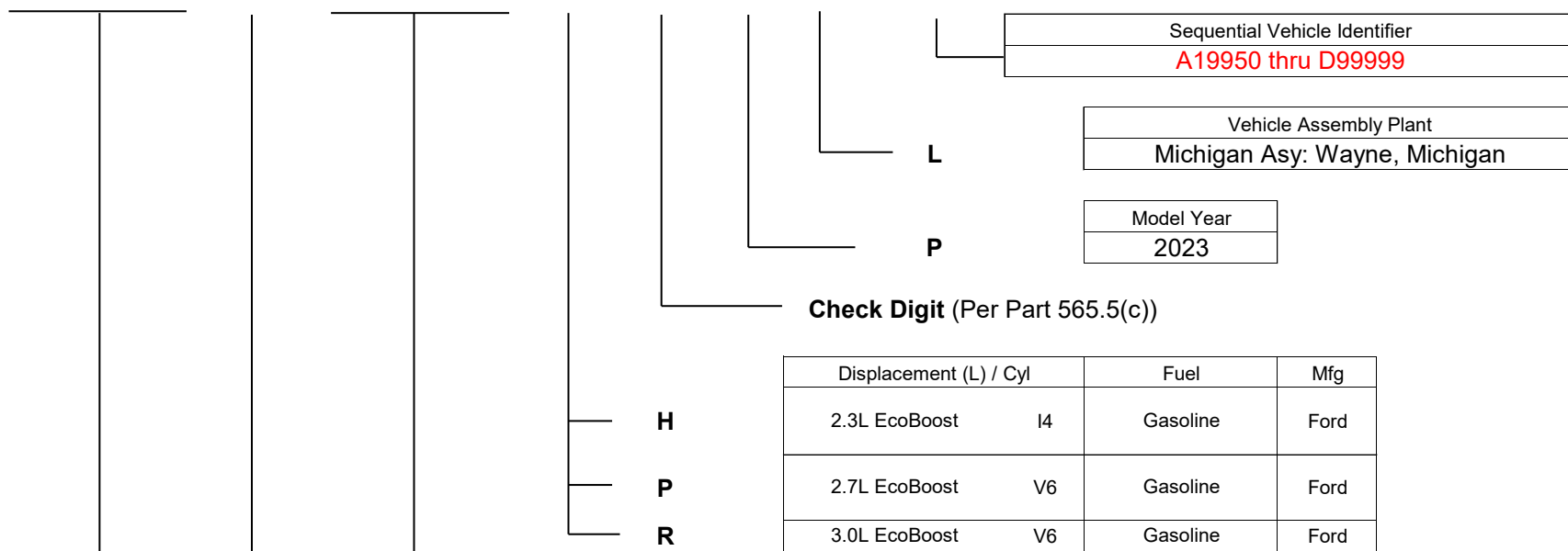


Note:  
IV = Incomplete Vehicle  
SRW = Single Rear Wheels  
DRW = Dual Rear Wheels



World Manufacturer Identifier (WMI)			Brake System / GVWR / Restraint System	Line, Series, Chassis Type, Cab or Body Type, Vehicle Type			Engine Type - Displ., Cylinders, Fuel Type, Mfg. and HP	VIN Check Digit (0-9 or X)	Vehicle Model Year	Plant of Manufacture	Numerical Sequence Vehicle Identifier					
1	2	3	4	5	6	7	8	9	10	11	12	13	14	15	16	17

1	F	M	?	E	?	?	?	?	P	L	?	?	?	?	?	?
---	---	---	---	---	---	---	---	---	---	---	---	---	---	---	---	---



	Make	Line	Series	Chassis Type	Cab or Body Type	Vehicle Type
E5A	Ford	Bronco	Base Big Bend Black Diamond Outer Banks	4x4	2 Door 4x4	MPV
E5B	Ford	Bronco	Base Big Bend Black Diamond Outer Banks	4x4	4 Door 4x4	MPV
E5C	Ford	Bronco	Base Big Bend Black Diamond Outer Banks Badlands Wildtrak	AWD	2 Door Advanced 4x4	MPV
E5D	Ford	Bronco	Base Big Bend Black Diamond Outer Banks Badlands Wildtrak Everglades	AWD	4 Door Advanced 4x4	MPV
E4C	Ford	Bronco	Heritage	AWD	2 Door Advanced 4x4	MPV
E4D	Ford	Bronco	Heritage	AWD	4 Door Advanced 4x4	MPV
E4E	Ford	Bronco	Heritage Limited	AWD	2 Door Advanced 4x4	MPV
E4G	Ford	Bronco	Heritage Limited	AWD	4 Door Advanced 4x4	MPV
E5J	Ford	Bronco	Raptor	AWD	4 Door Advanced 4x4 (Raptor)	MPV

Brake System	GVWR		Restraints						
	Class	Range (lbs)	Manual Belts	Driver Frontal	Pass. Frontal	Side inflatable			Driver Knee
Hydraulic	D	5001 - 6000	x	x	x	1st Row	2nd Row	3rd Row	
Hydraulic	E	6001 - 7000	x	x	x	x	x		

Manufacturer	Make	Type
Ford Motor Company, USA	Ford	MPV

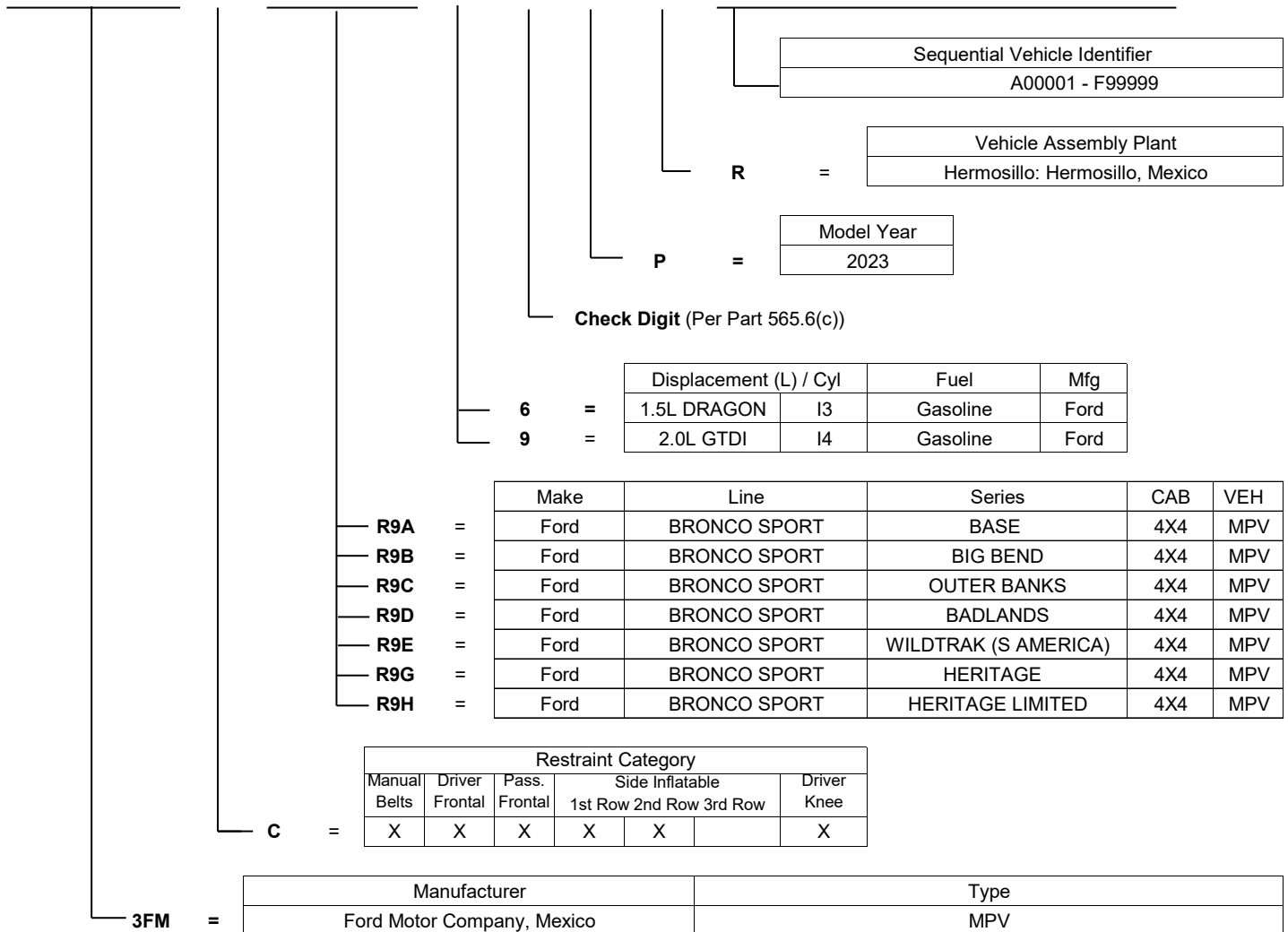
1FM

# 2023 MY Ford Bronco Sport

Attachment  
December 9, 2022

World Manufacturer Identifier (WMI)			Restraint System Category	Make, Car Line, Series, Body Type	Engine Type - Displacement, Cylinders, Fuel Type, Manufacturer, and Horsepower	VIN Check Digit (0-9 or X)	Vehicle Model Year	Plant of Manufacture	Numerical Sequence Vehicle Identifier							
1	2	3	4	5	6	7	8	9	10	11	12	13	14	15	16	17

3	F	M	C	R	9	?	?	?	P	R	?	?	?	?	?	?
---	---	---	---	---	---	---	---	---	---	---	---	---	---	---	---	---



# 2023 MY Ford Econoline

Attachment  
December 9, 2022

World Manufacturer Identifier (WMI)			Brake System / GVWR / Restraint System	Line, Series, Chassis Type, Cab or Body Type, Vehicle Type			Engine Type - Displ., Cylinders, Fuel Type, Mfg. and HP	VIN Check Digit (0-9 or X)	Vehicle Model Year	Plant of Manufacture	Alphanumeric Sequence Vehicle Identifier					
1	2	3	4	5	6	7	8	9	10	11	12	13	14	15	16	17

1	F	?	?	E	?	?	?	?	P	D	?	?	?	?	?	?
---	---	---	---	---	---	---	---	---	---	---	---	---	---	---	---	---

**Sequential Vehicle Identifier**  
C00001 - E99999

**Vehicle Assembly Plant**  
Ohio Assembly Plant: Avon Lake, Ohio

**Model Year**  
2023

**Check Digit (Per Part 565.5(c))**

Displacement (L) / Cyl	Fuel	Mfg
7.3L	V-8 Econ	Gasoline
7.3L	V-8 Prem	Gasoline

Make	Line	Series	Chassis Type	Cab/Body	Vehicle Type
E3F	Ford	Econoline	E-350	SRW / DRW	Cutaway
E3K	Ford	Econoline	E-350	SRW / DRW	Stripped Chassis
E4F	Ford	Econoline	E-450	SRW / DRW	Cutaway
E4K	Ford	Econoline	E-450	SRW / DRW	Stripped Chassis

Brake System	GVWR		Restraints								
	Class	Range (lbs)	Cat.	Manual Belts	Driver Frontal	Pass. Frontal	Side inflatable			Driver Knee	
W	Hydraulic	3	10,001 - 14,000	3	x	x	x				
X	Hydraulic	4	14,001 - 16,000	3	x	x	x				
3	Hydraulic	3	10,001 - 14,000	17							
4	Hydraulic	4	14,001 - 16,000	17							
E	Hydraulic	3	10,001 - 14,000	2	x	x					
F	Hydraulic	4	14,001 - 16,000	2	x	x					

1FC	1FD	Manufacturer	Make	Type
=	=	Ford Motor Company, USA	Ford	Basic (Stripped) Chassis
=	=	Ford Motor Company, USA	Ford	Incomplete Vehicle

# 2023 MY Ford Edge

Attachment  
December 9, 2022

World Manufacturer Identifier (WMI)			Brake System / GVWR / Restraint System Category	Make, Line, Series, Chassis Type, Cab or Body Type, Vehicle Type	Engine Type - Displacement, Cylinders, Fuel Type Manufacturer and Horsepower	VIN Check Digit (0-9 or X)	Vehicle Model Year	Plant of Manufacture	Alphanumeric Sequence Vehicle Identifier							
1	2	3	4	5	6	7	8	9	10	11	12	13	14	15	16	17

2	F	M	P	K	4	?	?	?	P	B	?	?	?	?	?	?
---	---	---	---	---	---	---	---	---	---	---	---	---	---	---	---	---

**2FM** =

**P** =

**K4A** =

**K4G** =

**K4J** =

**K4K** =

Sequential Vehicle Identifier  
A00001 thru F99999

Vehicle Assembly Plant  
**B** = Oakville: Oakville, Ontario

Model Year  
**P** = 2023

**Check Digit** (Per Part 565.5(c))

<b>P</b>	=	Displacement (L) / Cyl	Fuel	Mfg
<b>9</b>	=	2.7L GTDI V-6	Gasoline	Ford
		2.0L GTDI I-4	Gasoline	Ford

Make	Line	Series	Chassis Type	Cab/Body	Vehicle Type
Ford	Edge	ST	AWD	4-Door	MPV
Ford	Edge	SE	AWD	4-Door	MPV
Ford	Edge	SEL	AWD	4-Door	MPV
Ford	Edge	Titanium	AWD	4-Door	MPV

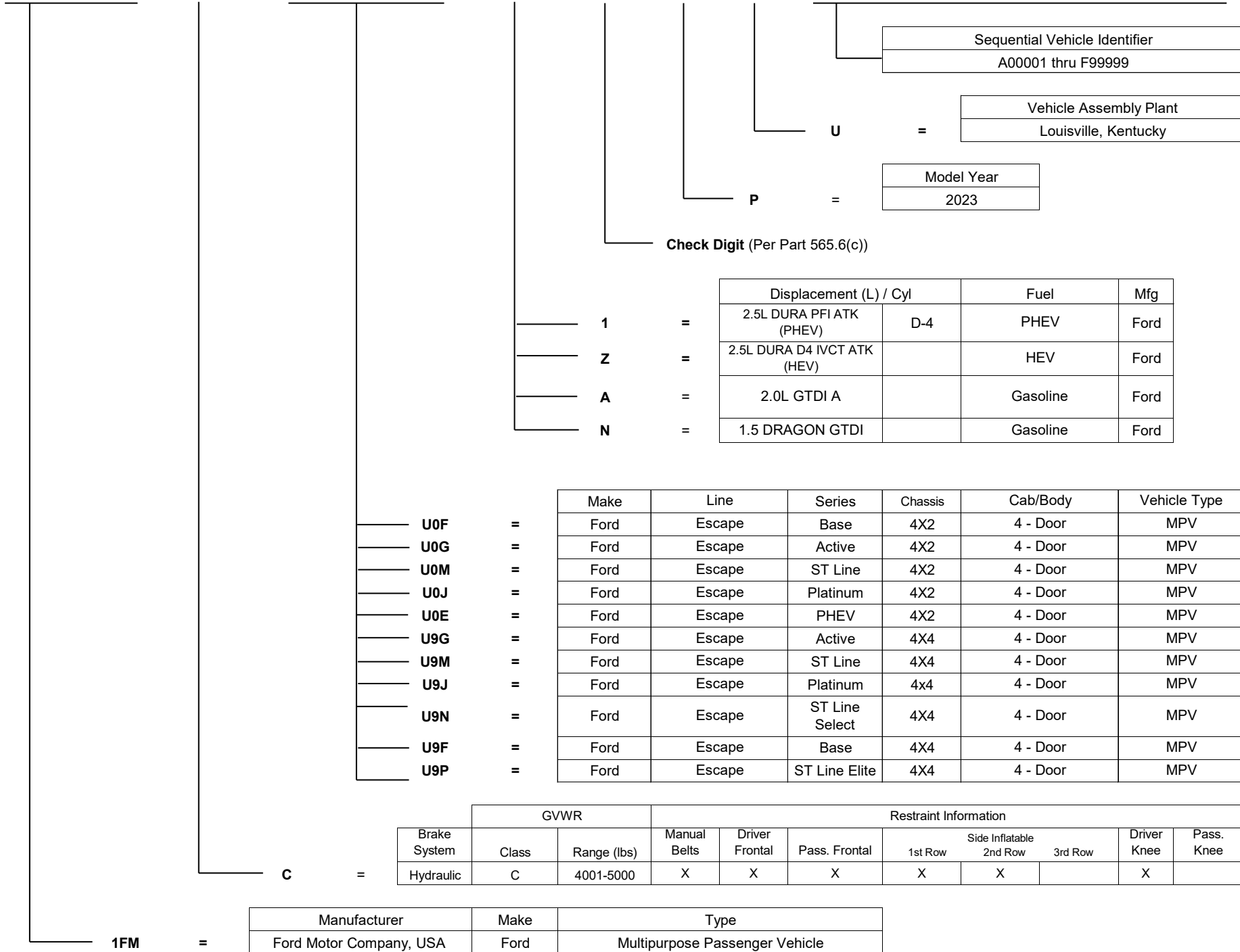
Brake System	GVWR			Restraint Information						
	Class	Range (lbs)	Manual Belts	Driver Frontal	Pass. Frontal	Side Inflatable			Driver Knee	Pass. Knee
Hydraulic	D	5001-6000	X	X	X	1st Row	2nd Row	3rd Row	X	X

Manufacturer Ford Motor Company of Canada, Ltd.	Type MPV
--	-------------

# 2023 MY Ford Escape

World Manufacturer Identifier (WMI)			Brake System / GVWR / Restraint System	Line, Series, Chassis Type, Cab or Body Type, Vehicle Type			Engine Type - Displ., Cylinders, Fuel Type, Mfg. and HP	VIN Check Digit (0-9 or X)	Vehicle Model Year	Plant of Manufacture	Alphanumeric Sequence Vehicle Identifier					
1	2	3	4	5	6	7	8	9	10	11	12	13	14	15	16	17

1	F	M	C	U	?	?	?	?	P	U	?	?	?	?	?	?
---	---	---	---	---	---	---	---	---	---	---	---	---	---	---	---	---



# 2023 MY Ford Expedition

Attachment  
December 9, 2022

World Manufacturer Identifier (WMI)			Brake System / GVWR / Restraint System	Line, Series, Chassis Type, Cab or Body Type, Vehicle Type			Engine Type - Displ., Cylinders, Fuel Type, Mfg. and HP	VIN Check Digit (0-9 or X)	Vehicle Model Year	Plant of Manufacture	Alphanumeric Sequence Vehicle Identifier					
1	2	3	4	5	6	7	8	9	10	11	12	13	14	15	16	17

1	F	M	J	?	?	?	?	?	P	E	A	?	?	?	?	?
---	---	---	---	---	---	---	---	---	---	---	---	---	---	---	---	---

Sequential Vehicle Identifier  
**A00001-A99999**

Vehicle Assembly Plant  
**E**  
 Kentucky Truck: Jefferson County, Kentucky

Model Year  
**2023**

**Check Digit (Per Part 565.6(c))**

Displacement (L) / Cyl	Fuel	Mfg
3.5L GTDI	V6	FFV/Gasoline
3.5L GTDI	V6	Ford

Make	Line	Series	Chassis	Cab/Body	Vehicle Type
Ford	Expedition	XL	4X2	4 - Door	MPV
Ford	Expedition	XL	4X4	4 - Door	MPV
Ford	Expedition	XLT	4X2	4 - Door	MPV
Ford	Expedition	XLT	4X4	4 - Door	MPV
Ford	Expedition	King Ranch	4X2	4 - Door	MPV
Ford	Expedition	King Ranch	4X4	4 - Door	MPV
Ford	Expedition	Limited	4x2	4 - Door	MPV
Ford	Expedition	Limited	4x4	4 - Door	MPV
Ford	Expedition	Platinum	4x2	4 - Door	MPV
Ford	Expedition	Platinum	4x4	4 - Door	MPV
Ford	Expedition	Timberline	4x4	4 - Door	MPV
Ford	Expedition MAX	XL	4X2	4 - Door	MPV
Ford	Expedition MAX	XL	4X4	4 - Door	MPV
Ford	Expedition MAX	XLT	4X2	4 - Door	MPV
Ford	Expedition MAX	XLT	4X4	4 - Door	MPV
Ford	Expedition MAX	King Ranch	4X2	4 - Door	MPV
Ford	Expedition MAX	King Ranch	4X4	4 - Door	MPV
Ford	Expedition MAX	Limited	4x2	4 - Door	MPV
Ford	Expedition MAX	Limited	4x4	4 - Door	MPV
Ford	Expedition MAX	Platinum	4x2	4 - Door	MPV
Ford	Expedition MAX	Platinum	4x4	4 - Door	MPV

Brake System	GVWR		Restraints						
	Class	Range (lbs)	Manual Belts	Driver Frontal	Pass. Frontal	Side inflatable			Driver Knee
						1st Row	2nd Row	3rd Row	
Hydraulic	F	7001 - 8000	x	x	x	x	x	x	

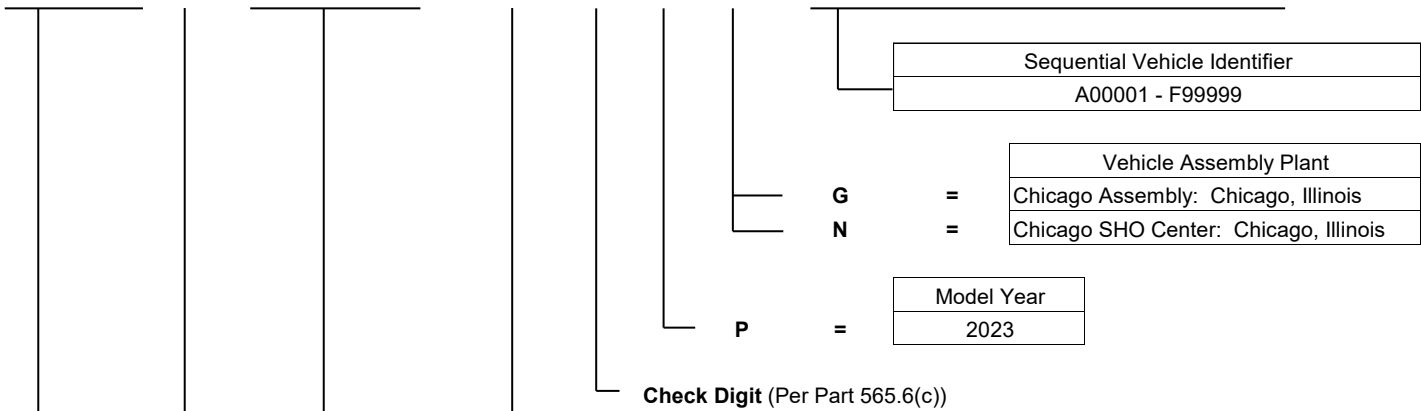
Manufacturer	Make	Type
Ford Motor Company, USA	Ford	Multipurpose Passenger Vehicle

**1FM**

# 2023 MY Ford Explorer

World Manufacturer Identifier (WMI)			Brake System / GVWR / Restraint System	Line, Series, Chassis Type, Cab or Body Type, Vehicle Type	Engine Type - Displ., Cylinders, Fuel Type, Mfg. and HP	VIN Check Digit (0-9 or X)	Vehicle Model Year	Plant of Manufacture	Alphanumeric Sequence Vehicle Identifier							
1	2	3	4	5	6	7	8	9	10	11	12	13	14	15	16	17

1	F	M	?	K	?	?	?	?	P	?	?	?	?	?	?	?
---	---	---	---	---	---	---	---	---	---	---	---	---	---	---	---	---



**Check Digit (Per Part 565.6(c))**

	Displacement (L) / Cyl	Fuel	Mfg
<b>B</b> =	3.3L Ti-VCT V-6	Gasoline	Ford
<b>H</b> =	2.3L TiVCT I-4	Gasoline	Ford
<b>W</b> =	3.3L Ti-VCT D4	Hybrid/Electric	Ford
<b>C</b> =	3.0L GTDI V-6	Gasoline	Ford
<b>Y</b> =	3.0L GTDI D4	PHEV	Ford

	Make	Line	Series	Chassis Type	Cab/Body	Vehicle Type
<b>K7B</b> =	Ford	Explorer	Base	RWD	4 - Door	MPV
<b>K7D</b> =	Ford	Explorer	XL	RWD	4 - Door	MPV
<b>K7F</b> =	Ford	Explorer	Limited	RWD	4 - Door	MPV
<b>K7H</b> =	Ford	Explorer	Platinum	RWD	4 - Door	MPV
<b>K7L</b> =	Ford	Explorer	King Ranch	RWD	4 - Door	MPV
<b>K7G</b> =	Ford	Explorer	ST	RWD	4 - Door	MPV
<b>K7K</b> =	Ford	Explorer	ST-Line	RWD	4 - Door	MPV
<b>K8A</b> =	Ford	Explorer	Police	4WD	4 - Door	MPV
<b>K8B</b> =	Ford	Explorer	Base	4WD	4 - Door	MPV
<b>K8D</b> =	Ford	Explorer	XL	4WD	4 - Door	MPV
<b>K8F</b> =	Ford	Explorer	Limited	4WD	4 - Door	MPV
<b>K8G</b> =	Ford	Explorer	ST	4WD	4 - Door	MPV
<b>K8H</b> =	Ford	Explorer	Platinum	4WD	4 - Door	MPV
<b>K8L</b> =	Ford	Explorer	King Ranch	4WD	4 - Door	MPV
<b>K8K</b> =	Ford	Explorer	ST-Line	4WD	4 - Door	MPV
<b>K8J</b> =	Ford	Explorer	Timberline	4WD	4 - Door	MPV

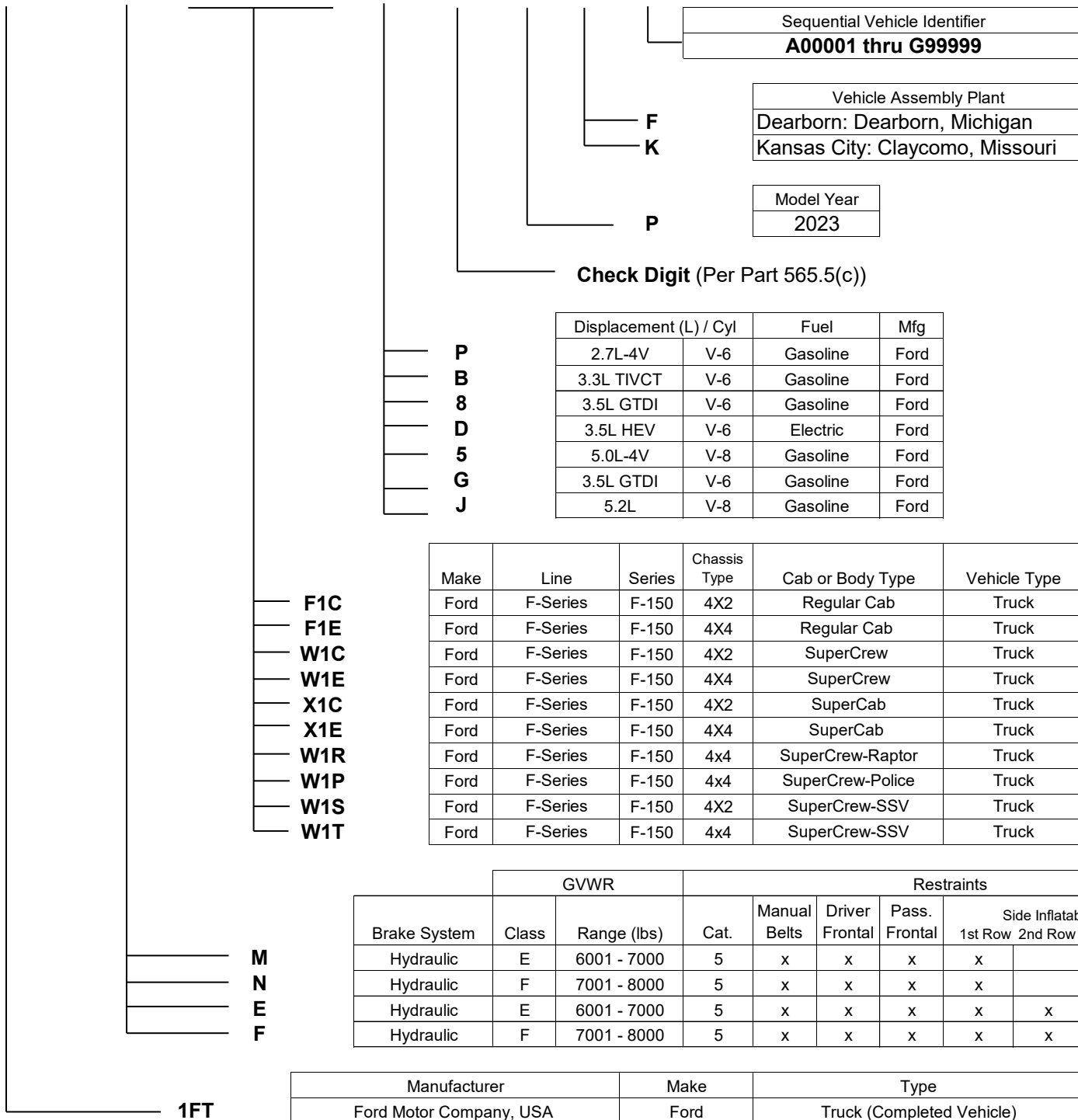
	GVWR			Restraint Information							
	Brake System	Class	Range (lbs)	Manual Belts	Driver Frontal	Pass. Frontal	Side Inflatable			Driver Knee	Pass. Knee
							1st Row	2nd Row	3rd Row		
<b>5</b> =	Hydraulic	E	6001 - 7000	X	X	X	X	X	X	X	X
<b>S</b> =	Hydraulic	D	5001-6000	X	X	X	X	X	X	X	X

<b>1FM</b> =	Manufacturer	Make	Type
	Ford Motor Company, USA	Ford	Multipurpose Passenger Vehicle

# 2023 MY Ford F-150

World Manufacturer Identifier (WMI)			Brake System / GVWR / Restraint System	Line, Series, Chassis Type, Cab or Body Type, Vehicle Type			Engine Type - Displ., Cylinders, Fuel Type, Mfg. and HP	VIN Check Digit (0-9 or X)	Vehicle Model Year	Plant of Manufacture	Numerical Sequence Vehicle Identifier					
1	2	3	4	5	6	7	8	9	10	11	12	13	14	15	16	17

1 F T ? ? 1 ? ? ? P ? ? ? ? ? ? ?



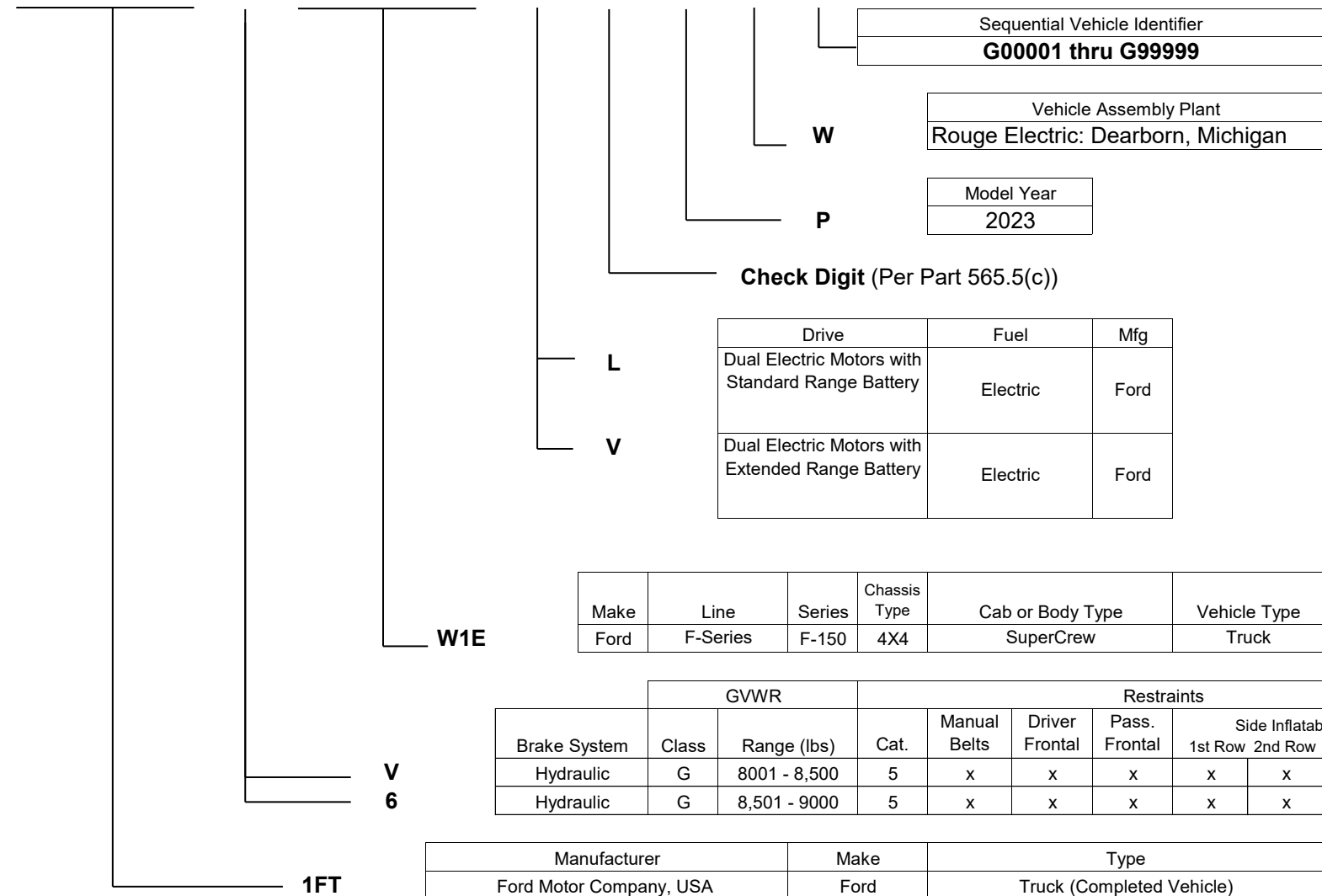


# 2023 MY Ford F-150 BEV

Attachment  
December 9, 2022

World Manufacturer Identifier (WMI)			Brake System / GVWR / Restraint System	Line, Series, Chassis Type, Cab or Body Type, Vehicle Type			Engine Type - Displ., Cylinders, Fuel Type, Mfg. and HP	VIN Check Digit (0-9 or X)	Vehicle Model Year	Plant of Manufacture	Numerical Sequence Vehicle Identifier					
1	2	3	4	5	6	7	8	9	10	11	12	13	14	15	16	17

1 F T ? 1 W E ? ? P W ? ? ? ? ? ?



Sequential Vehicle Identifier
<b>G00001 thru G99999</b>

Vehicle Assembly Plant
Rouge Electric: Dearborn, Michigan

Model Year
2023

Check Digit (Per Part 565.5(c))

Drive	Fuel	Mfg
Dual Electric Motors with Standard Range Battery	Electric	Ford
Dual Electric Motors with Extended Range Battery	Electric	Ford

Make	Line	Series	Chassis Type	Cab or Body Type	Vehicle Type
Ford	F-Series	F-150	4X4	SuperCrew	Truck

Brake System	GVWR			Restraints						
	Class	Range (lbs)	Cat.	Manual Belts	Driver Frontal	Pass. Frontal	Side Inflatable			Driver Knee
							1st Row	2nd Row	3rd Row	
Hydraulic	G	8001 - 8,500	5	x	x	x	x	x		
Hydraulic	G	8,501 - 9000	5	x	x	x	x	x		

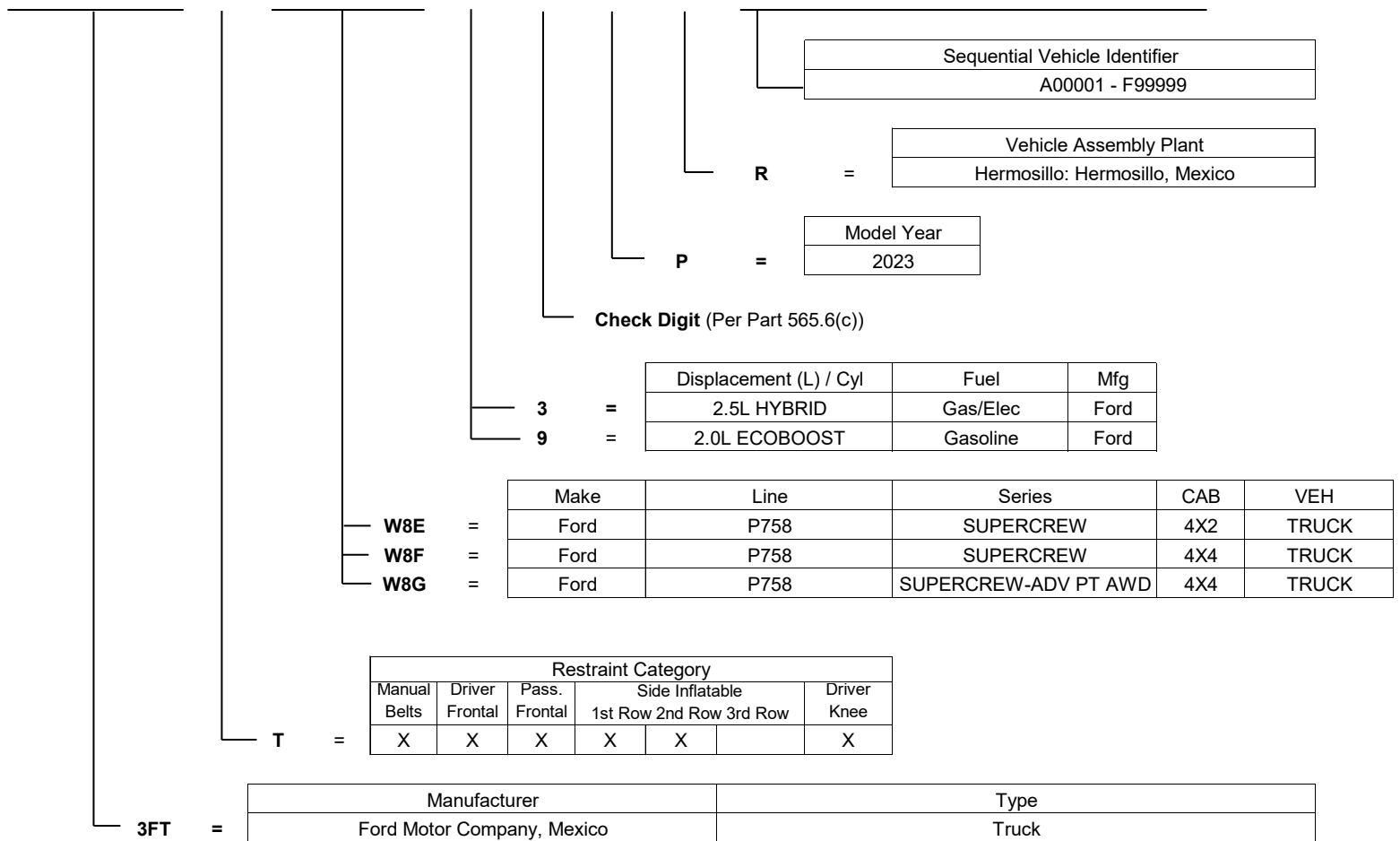
Manufacturer	Make	Type
Ford Motor Company, USA	Ford	Truck (Completed Vehicle)

# 2023 MY Ford Maverick

Attachment  
December 9, 2022

World Manufacturer Identifier (WMI)			Restraint System Category	Make, Car Line, Series, Body Type			Engine Type - Displacement, Cylinders, Fuel Type, Manufacturer, and Horsepower	VIN Check Digit (0-9 or X)	Vehicle Model Year	Plant of Manufacture	Numerical Sequence Vehicle Identifier					
1	2	3	4	5	6	7	8	9	10	11	12	13	14	15	16	17

3	F	T	T	W	8	?	?	?	P	R	?	?	?	?	?	?
---	---	---	---	---	---	---	---	---	---	---	---	---	---	---	---	---

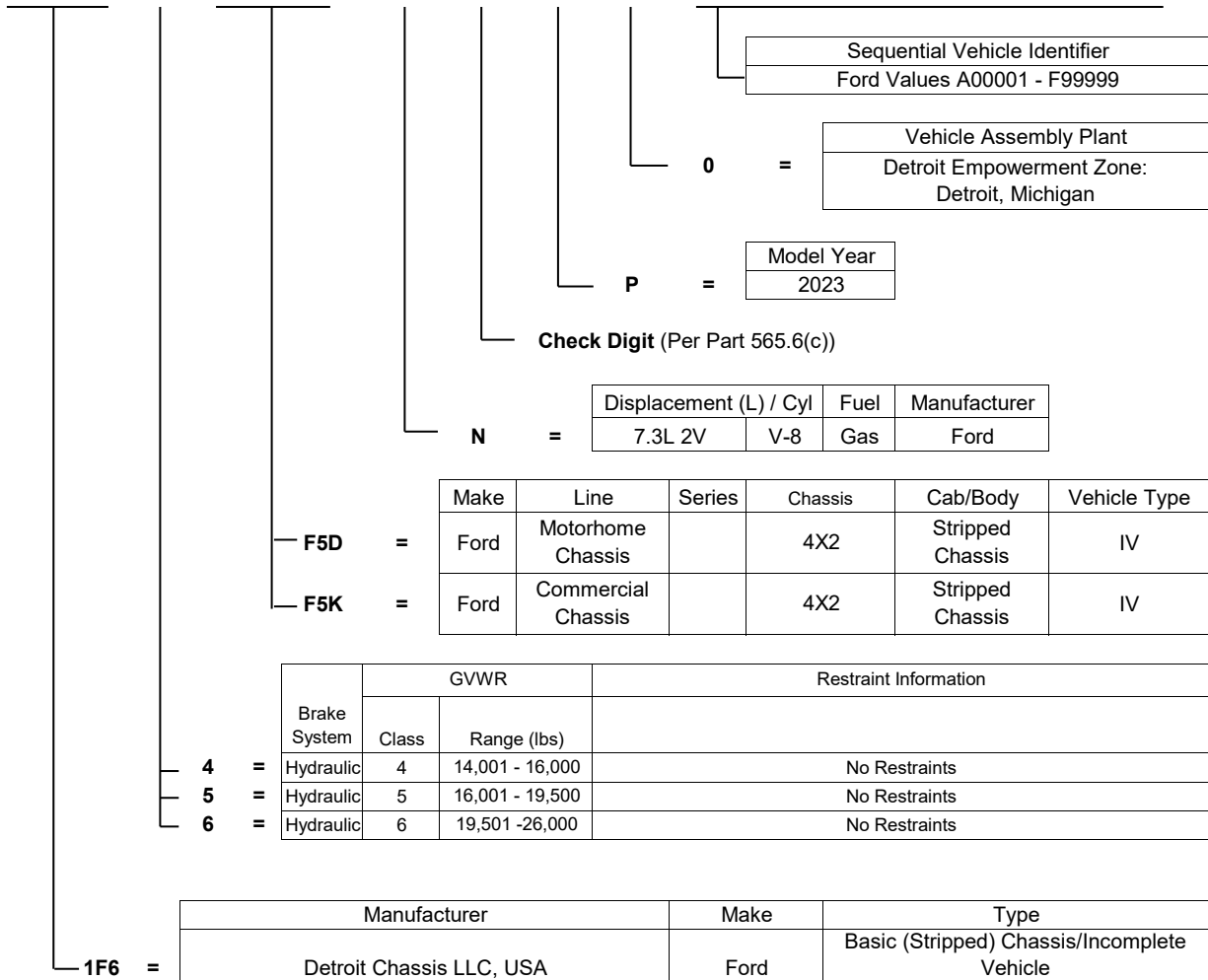


# 2023 Ford Motorhome-Stripped Chassis

Attachment  
December 9, 2022

World Manufacturer Identifier (WMI)			Brake System / GVWR / Restraint System	Line, Series, Chassis Type, Cab or Body Type, Vehicle Type	Engine Type - Displ., Cylinders, Fuel Type, Mfg. and HP	VIN Check Digit (0-9 or X)	Vehicle Model Year	Plant of Manufacture	Alphanumeric Sequence Vehicle Identifier							
1	2	3	4	5	6	7	8	9	10	11	12	13	14	15	16	17

1 F 6 ? F 5 ? N ? P 0 ? ? ? ? ? ?



Sequential Vehicle Identifier  
Ford Values A00001 - F99999

Vehicle Assembly Plant  
Detroit Empowerment Zone:  
Detroit, Michigan

Model Year  
2023

Check Digit (Per Part 565.6(c))

Displacement (L) / Cyl	Fuel	Manufacturer
7.3L 2V	V-8	Gas

Make	Line	Series	Chassis	Cab/Body	Vehicle Type
Ford	Motorhome Chassis		4X2	Stripped Chassis	IV
Ford	Commercial Chassis		4X2	Stripped Chassis	IV

Brake System	GVWR		Restraint Information
	Class	Range (lbs)	
4 = Hydraulic	4	14,001 - 16,000	No Restraints
5 = Hydraulic	5	16,001 - 19,500	No Restraints
6 = Hydraulic	6	19,501 - 26,000	No Restraints

Manufacturer	Make	Type
Detroit Chassis LLC, USA	Ford	Basic (Stripped) Chassis/Incomplete Vehicle

2023 MY Ford Mustang Mach-E

Attachment  
May 23, 2022

World Manufacturer Identifier (WMI)			Restraint System Category	Make, Car Line, Series, Body Type			Engine Type - Displacement, Cylinders, Fuel Type, Manufacturer, and Horsepower	VIN Check Digit (0-9 or X)	Vehicle Model Year	Plant of Manufacture	Numerical Sequence Vehicle Identifier					
1	2	3	4	5	6	7	8	9	10	11	12	13	14	15	16	17

3	F	M	T	K	?	?	?	?	P	M	?	?	?	?	?	?
---	---	---	---	---	---	---	---	---	---	---	---	---	---	---	---	---

Sequential Vehicle Identifier
A00001- F99999

Vehicle Assembly Plant
Cuautitan, Mexico

Model Year
2023

Check Digit (Per Part 565.6(c))

	Drive	Fuel	Mfr
M	Standard Range Battery, Rear Primary Drive Unit	Electric	Ford
7	Extended Range Battery, Rear Primary Drive Unit	Electric	Ford
S	Standard Range Battery, Rear Primary Drive Unit, Smaller Secondary Drive Unit	Electric	Ford
U	Extended Range Battery, Rear Primary Drive Unit, Smaller Secondary Drive Unit	Electric	Ford
X	Extended Range Battery, Rear Primary Drive Unit, Larger Secondary Drive Unit	Electric	Ford
E	Extended Range Battery, Limited Rear Primary Drive Unit, Limited Larger Secondary Drive Unit	Electric	Ford

	Make	Line	Series	Chassis	Body Type	Drive
K1R	Ford	Mustang Mach-E	Select	RWD	4-Door	LHD
K1S	Ford	Mustang Mach-E	Select	AWD	4-Door	LHD
K2S	Ford	Mustang Mach-E	California Route 1	AWD	4-Door	LHD
K3R	Ford	Mustang Mach-E	Premium	RWD	4-Door	LHD
K3S	Ford	Mustang Mach-E	Premium	AWD	4-Door	LHD
K4S	Ford	Mustang Mach-E	GT	AWD	4-Door	LHD

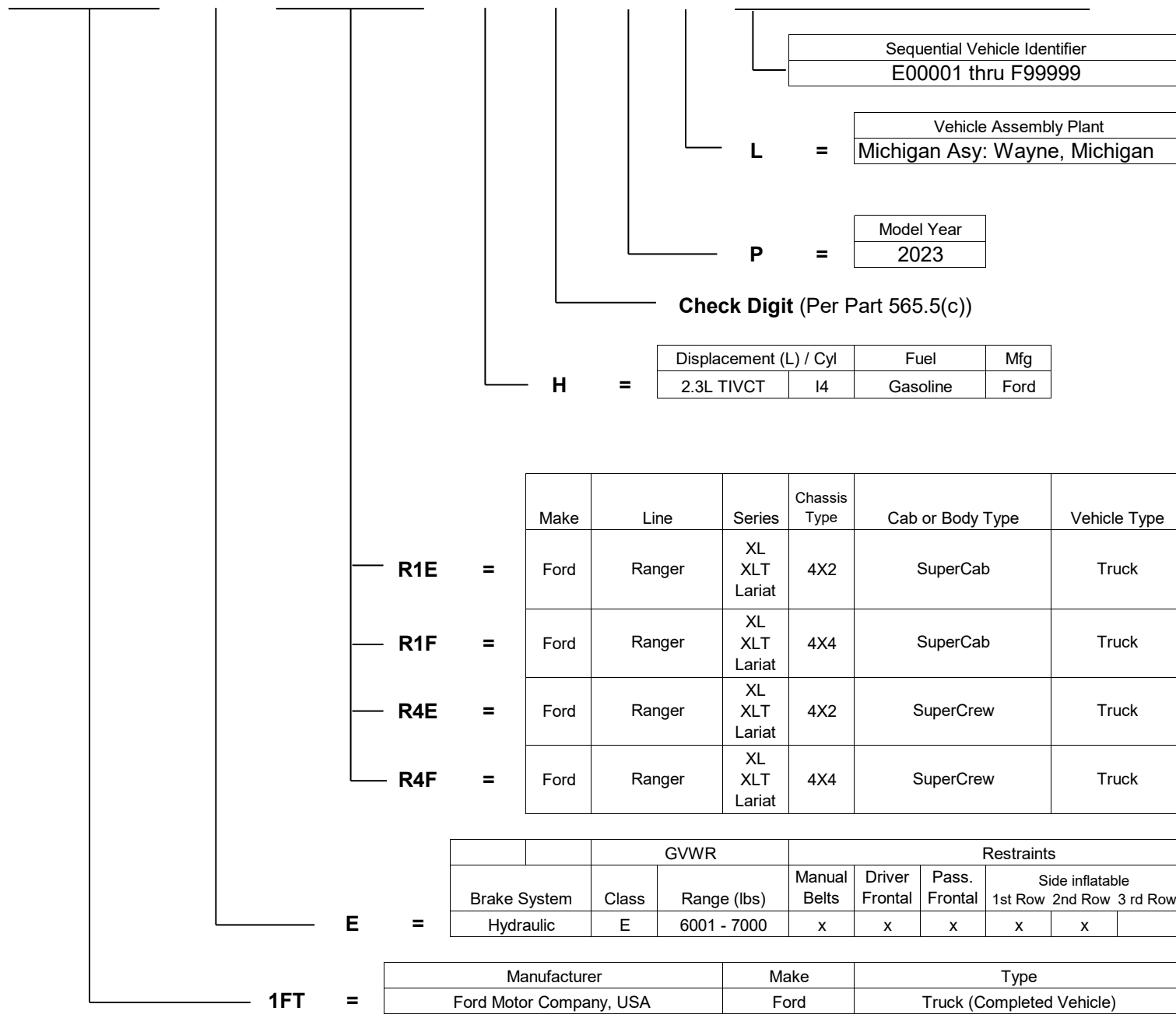
Restraint Information										
Brake System	Class	Range (lb)	Manual Belts	Driver Frontal	Pass. Frontal	1st Row	Side Inflatable 2nd Row	3rd Row	Driver Knee	Pass Knee
Hydraulic	D	5001-6000	X	X	X	X	X		X	

Manufacturer	Make	Type
Ford Motor Company, Mexico	Ford	Multipurpose Passenger Vehicle

3FM =

# 2023 Ford Ranger

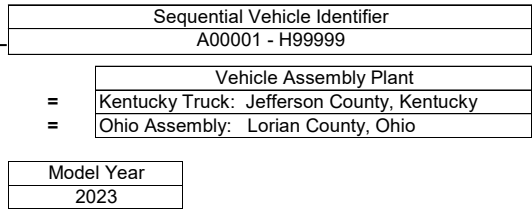
World Manufacturer Identifier (WMI)			Brake System / GVWR / Restraint System	Line, Series, Chassis Type, Cab or Body Type, Vehicle Type			Engine Type - Displ., Cylinders, Fuel Type, Mfg. and HP	VIN Check Digit (0-9 or X)	Vehicle Model Year	Plant of Manufacture	Numerical Sequence Vehicle Identifier					
1	2	3	4	5	6	7	8	9	10	11	12	13	14	15	16	17
1	F	T	E	R	?	?	H	?	P	L	?	?	?	?	?	?



# 2023 Ford Super Duty F-250 and F-350

Attachment  
December 9, 2022

World Manufacturer Identifier (WMI)			Brake System / GVWR / Restraint System	Line, Series, Chassis Type, Cab or Body Type, Vehicle Type			Engine Type - Displ., Cylinders, Fuel Type, Mfg.	VIN Check Digit (0-9 or X)	Vehicle Model Year	Plant of Manufacture	Alphanumeric Sequence Vehicle Identifier					
1	2	3	4	5	6	7	8	9	10	11	12	13	14	15	16	17
1	F	?	?	?	?	?	?	?	P	?	?	?	?	?	?	?



**Check Digit (Per Part 565.6(c))**

	Displacement (L) / Cyl	Fuel	Manufacturer
A =	6.8L	V-8	Gasoline
N =	7.3L	V-8	Gasoline
M =	6.7L	V-8	Diesel
T =	6.7L	V-8	Diesel

	Make	Line	Series	Chassis	Cab or Body Type	Vehicle Type
F2A =	Ford	F-Series	F-250	4X2	Regular Cab - SRW	Truck / IV
F2B =	Ford	F-Series	F-250	4X4	Regular Cab - SRW	Truck / IV
F3A =	Ford	F-Series	F-350	4X2	Regular Cab - SRW	Truck / IV
F3B =	Ford	F-Series	F-350	4X4	Regular Cab - SRW	Truck / IV
F3C =	Ford	F-Series	F-350	4X2	Regular Cab - DRW	Truck / IV
F3D =	Ford	F-Series	F-350	4X4	Regular Cab - DRW	Truck / IV
F3E =	Ford	F-Series	F-350	4X2	Regular Cab - SRW	IV
F3F =	Ford	F-Series	F-350	4X4	Regular Cab - SRW	IV
F3G =	Ford	F-Series	F-350	4X2	Regular Cab - DRW	IV
F3H =	Ford	F-Series	F-350	4X4	Regular Cab - DRW	IV
W2A =	Ford	F-Series	F-250	4X2	Crew Cab - SRW	Truck / IV
W2B =	Ford	F-Series	F-250	4X4	Crew Cab - SRW	Truck / IV
W3A =	Ford	F-Series	F-350	4X2	Crew Cab - SRW	Truck / IV
W3B =	Ford	F-Series	F-350	4X4	Crew Cab - SRW	Truck / IV
W3C =	Ford	F-Series	F-350	4X2	Crew Cab - DRW	Truck / IV
W3D =	Ford	F-Series	F-350	4X4	Crew Cab - DRW	Truck / IV
W3E =	Ford	F-Series	F-350	4X2	Crew Cab - SRW	IV
W3F =	Ford	F-Series	F-350	4X4	Crew Cab - SRW	IV
W3G =	Ford	F-Series	F-350	4X2	Crew Cab - DRW	IV
W3H =	Ford	F-Series	F-350	4X4	Crew Cab - DRW	IV
X2A =	Ford	F-Series	F-250	4X2	SuperCab - SRW	Truck / IV
X2B =	Ford	F-Series	F-250	4X4	SuperCab - SRW	Truck / IV
X3A =	Ford	F-Series	F-350	4X2	SuperCab - SRW	Truck / IV
X3B =	Ford	F-Series	F-350	4X4	SuperCab - SRW	Truck / IV
X3C =	Ford	F-Series	F-350	4X2	SuperCab - DRW	Truck / IV
X3D =	Ford	F-Series	F-350	4X4	SuperCab - DRW	Truck / IV
X3E =	Ford	F-Series	F-350	4X2	SuperCab - SRW	IV
X3F =	Ford	F-Series	F-350	4X4	SuperCab - SRW	IV
X3G =	Ford	F-Series	F-350	4X2	SuperCab - DRW	IV
X3H =	Ford	F-Series	F-350	4X4	SuperCab - DRW	IV

		GVWR			Restraints						
		Brakes	Class	Range (lbs)	Manual Belts	Driver Frontal	Pass. Frontal	Side Inflatable			Driver Knee
							1st Row	2nd Row	3rd Row		
B =	Hydraulic	H	9,001-10,000	X	X	X	X				
R =	Hydraulic	3	10,001-14,000	X	X	X	X				
7 =	Hydraulic	H	9,001-10,000	X	X	X	X	X			
8 =	Hydraulic	3	10,001-14,000	X	X	X	X	X			

	Manufacturer	Make	Type
1FD =	Ford Motor Company, USA	Ford	Incomplete Vehicle
1FT =	Ford Motor Company, USA	Ford	Truck

# 2023 Ford Super Duty F-450, F-550, F-600

Attachment  
December 9, 2022

World Manufacturer Identifier (WMI)			Brake System / GVWR / Restraint System	Line, Series, Chassis Type, Cab or Body Type, Vehicle Type			Engine Type - Displ., Cylinders, Fuel Type, Mfg.	VIN Check Digit (0-9 or X)	Vehicle Model Year	Plant of Manufacture	Alphanumeric Sequence Vehicle Identifier					
1	2	3	4	5	6	7	8	9	10	11	12	13	14	15	16	17

1	F	?	?	?	?	?	?	?	P	?	?	?	?	?	?	?
---	---	---	---	---	---	---	---	---	---	---	---	---	---	---	---	---

Sequential Vehicle Identifier  
A00001 - H99999

Vehicle Assembly Plant  
E = Kentucky Truck: Jefferson County, Kentucky  
D = Ohio Assembly: Lorain County, Ohio

Model Year  
2023

**Check Digit (Per Part 565.6(c))**

	A	=	6.8L	V-8	Gasoline	Ford
	N	=	7.3L	V-8	Gasoline	Ford
	M	=	6.7L	V-8	Diesel	Ford
	T	=	6.7L	V-8	Diesel	Ford

	Make	Line	Series	Chassis	Cab or Body Type	Vehicle Type
F4C	Ford	F-Series	F-450	4X2	Regular Cab - DRW	Truck / IV
F4D	Ford	F-Series	F-450	4X4	Regular Cab - DRW	Truck / IV
F4G	Ford	F-Series	F-450	4X2	Regular Cab - DRW	IV
F4H	Ford	F-Series	F-450	4X4	Regular Cab - DRW	IV
F5G	Ford	F-Series	F-550	4X2	Regular Cab - DRW	IV
F5H	Ford	F-Series	F-550	4X4	Regular Cab - DRW	IV
W4C	Ford	F-Series	F-450	4X2	Crew Cab - DRW	Truck / IV
W4D	Ford	F-Series	F-450	4X4	Crew Cab - DRW	Truck / IV
W4G	Ford	F-Series	F-450	4X2	Crew Cab - DRW	IV
W4H	Ford	F-Series	F-450	4X4	Crew Cab - DRW	IV
W5G	Ford	F-Series	F-550	4X2	Crew Cab - DRW	IV
W5H	Ford	F-Series	F-550	4X4	Crew Cab - DRW	IV
X4G	Ford	F-Series	F-450	4X2	SuperCab - DRW	IV
X4H	Ford	F-Series	F-450	4X4	SuperCab - DRW	IV
X5G	Ford	F-Series	F-550	4X2	SuperCab - DRW	IV
X5H	Ford	F-Series	F-550	4X4	SuperCab - DRW	IV
F6K	Ford	F-Series	F-600	4X2	Regular Cab - DRW	IV
F6L	Ford	F-Series	F-600	4X4	Regular Cab - DRW	IV

		GVWR			Restraints						
		Brakes	Class	Range (lbs)	Manual Belts	Driver Frontal	Pass. Frontal	Side Inflatable			Driver Knee
							1st Row	2nd Row	3rd Row		
R	=	Hydraulic	3	10,001-14,000	X	X	X	X			
T	=	Hydraulic	4	14,001-16,000	X	X	X	X			
U	=	Hydraulic	5	16,001-19,500	X	X	X	X			
8	=	Hydraulic	3	10,001-14,000	X	X	X	X	X		
9	=	Hydraulic	4	14,001-16,000	X	X	X	X	X		
0	=	Hydraulic	5	16,001-19,500	X	X	X	X	X		
F	=	Hydraulic	6	19,501-26,000	X	X	X	X			

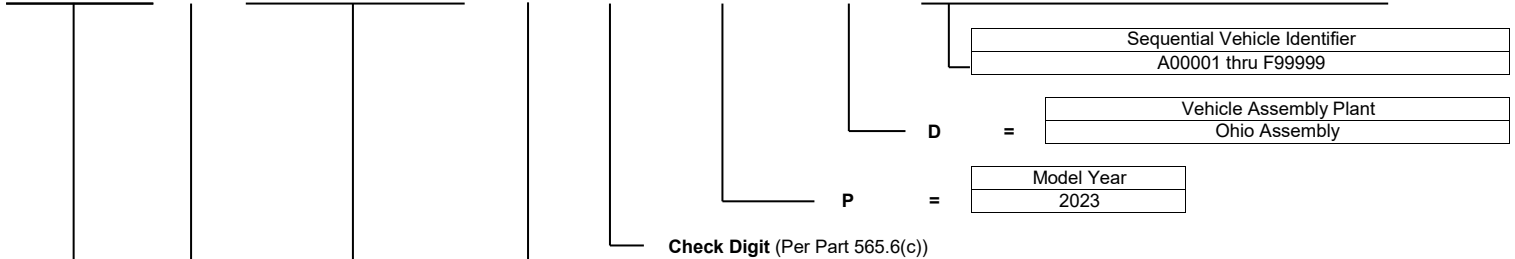
1FD	=	Manufacturer	Ford Motor Company, USA	Make	Ford	Type	Incomplete Vehicle
1FT	=	Manufacturer	Ford Motor Company, USA	Make	Ford	Type	Truck

# 2023 MY Ford SuperDuty F-650 F-750

Attachment  
December 9, 2022

World Manufacturer Identifier (WMI)			Brake System / GVWR / Restraint System			Line, Series, Chassis Type, Cab or Body Type, Vehicle Type		Engine Type - Displ., Cylinders, Fuel Type, Mfg. and HP		VIN Check Digit (0-9 or X)		Vehicle Model Year		Plant of Manufacture	Alphanumeric Sequence Vehicle Identifier		
1	2	3	4	5	6	7	8	9	10	11	12	13	14	15	16	17	

1	F	D	?	?	?	?	?	?	P	D	?	?	?	?	?	?
---	---	---	---	---	---	---	---	---	---	---	---	---	---	---	---	---



Displacement (L) / Cyl	Fuel	Manufacturer
6.7L V-8	Diesel	Ford
6.7L V-8	Diesel	Ford
6.7L V-8	Diesel	Ford
7.3L V-8	Gas/ Gaseous Prep	Ford

	Make	Line	Series	Chassis Type	Cab or Body Type	Type
F6A	Ford	F-Super Duty Gas	F-650	DRW 4X2	Reg Cab Straight Frame	IV
F6B	Ford	F-Super Duty Gas	F-650	DRW 4X2	Reg Cab Kick-up Frame	IV
F6C	Ford	F-Super Duty Gas	F-650	DRW 4X2	Reg Cab Straight Frame	IV
F6D	Ford	F-Super Duty Diesel	F-650	DRW 4X2	Reg Cab Straight Frame	IV
F6E	Ford	F-Super Duty Diesel	F-650	DRW 4X2	Reg Cab Kick-up Frame	IV
F6T	Ford	F-Super Duty Diesel	F-650	DRW 4X2	Reg Cab Tractor	IV
F7A	Ford	F-Super Duty Gas	F-750	DRW 4X2	Reg Cab Straight Frame	IV
F7D	Ford	F-Super Duty Diesel	F-750	DRW 4X2	Reg Cab Straight Frame	IV
F7T	Ford	F-Super Duty Diesel	F-750	DRW 4X2	Reg Cab Tractor	IV
W6A	Ford	F-Super Duty Gas	F-650	DRW 4X2	Crew Cab Straight Frame	IV
W6B	Ford	F-Super Duty Gas	F-650	DRW 4X2	Crew Cab Kick-up Frame	IV
W6D	Ford	F-Super Duty Diesel	F-650	DRW 4X2	Crew Cab Straight Frame	IV
W6E	Ford	F-Super Duty Diesel	F-650	DRW 4X2	Crew Cab Kick-up Frame	IV
W6T	Ford	F-Super Duty Diesel	F-650	DRW 4X2	Crew Cab Tractor	IV
W7A	Ford	F-Super Duty Gas	F-750	DRW 4X2	Crew Cab Straight Frame	IV
W7D	Ford	F-Super Duty Diesel	F-750	DRW 4X2	Crew Cab Straight Frame	IV
W7T	Ford	F-Super Duty Diesel	F-750	DRW 4X2	Crew Cab Tractor	IV
X6A	Ford	F-Super Duty Gas	F-650	DRW 4X2	Super Cab Straight Frame	IV
X6B	Ford	F-Super Duty Gas	F-650	DRW 4X2	Super Cab Kick-up Frame	IV
X6D	Ford	F-Super Duty Diesel	F-650	DRW 4X2	Super Cab Straight Frame	IV
X6E	Ford	F-Super Duty Diesel	F-650	DRW 4X2	Super Cab Kick-up Frame	IV
X6T	Ford	F-Super Duty Diesel	F-650	DRW 4X2	Super Cab Tractor	IV
X7A	Ford	F-Super Duty Gas	F-750	DRW 4X2	Super Cab Straight Frame	IV
X7D	Ford	F-Super Duty Diesel	F-750	DRW 4X2	Super Cab Straight Frame	IV
X7T	Ford	F-Super Duty Diesel	F-750	DRW 4X2	Super Cab Tractor	IV

	Brake System	GVWR			Restraint Information						
		Class	Range (lbs)	Cat.	Manual Belts	Driver Frontal	Pass. Frontal	Side Inflatable 1st Row 2nd Row 3rd Row			Driver Knee
N	Hydraulic	6	19,501 - 26,000	1	x						
P	Hydraulic	7	26,001 - 33,000	1	x						
W	Air	6	19,501 - 26,000	1	x						
X	Air	7	26,001 - 33,000	1	x						
Y	Air	8	33,001 - 55,000	1	x						

	Manufacturer Ford Motor Company	Make Ford	Type Incomplete Vehicle
--	------------------------------------	--------------	----------------------------

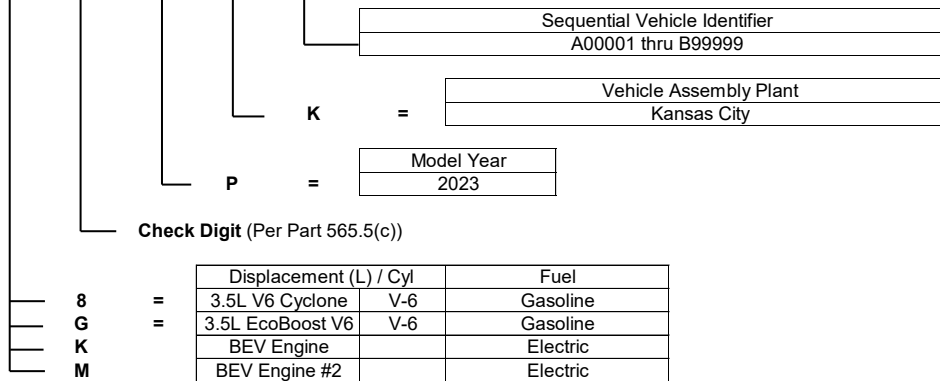


# 2023 Ford Transit

Attachment  
December 9, 2022

World Manufacturer Identifier (WMI)			Brake System / GVWR / Restraint System	Line, Series, Chassis Type, Cab or Body Type, Vehicle Type			Cylinders, Fuel Type, Mfg. and HP	VIN Check Digit (0-9 or X)	Vehicle Model Year	Plant of Manufacture	Alphanumeric Sequence Vehicle Identifier					
1	2	3	4	5	6	7	8	9	10	11	12	13	14	15	16	17

1	F	?	?	?	?	?	?	?	P	K	?	?	?	?	?	?
---	---	---	---	---	---	---	---	---	---	---	---	---	---	---	---	---



	Make	Line	Series	Chassis Type	Cab/Body	Vehicle Type	GVWR	ROOF	Wheelbase		
—	E2Y	=	Ford	Transit	150	AWD	Van	Truck/IV	8670#	Low	130/148
—	E1Y	=	Ford	Transit	150	RWD	Van	Truck/IV	8670#	Low	130/148
—	R2Y	=	Ford	Transit	250	AWD	Van	Truck/IV	9070#	Low	130/148
—	R1Y	=	Ford	Transit	250	RWD	Van	Truck/IV	9070#	Low	130/148
—	W1Y	=	Ford	Transit	350	RWD	Van	Truck/IV	9500#	Low	130/148
—	W2Y	=	Ford	Transit	350	AWD	Van	Truck/IV	9500#	Low	130/148
—	F1Y	=	Ford	Transit	350 HD	RWD	Van	Truck/IV	9950#	Low	148
—	F2Y	=	Ford	Transit	350 HD	AWD	Van	Truck/IV	9950#	Low	148
—	E1C	=	Ford	Transit	150	RWD	Van	Truck/IV	8670#	Medium	130/148
—	E2C	=	Ford	Transit	150	AWD	Van	Truck/IV	8670#	Medium	130/148
—	R1C	=	Ford	Transit	250	RWD	Van	Truck/IV	9070#	Medium	130/148
—	R2C	=	Ford	Transit	250	AWD	Van EL	Truck/IV	9070#	Medium	130/148
—	W9C	=	Ford	Transit	350	RWD	Van	Truck/IV	9500#	Medium	130/148
—	W2C	=	Ford	Transit	350	AWD	Van	Truck/IV	9500#	Medium	130/148
—	F7C	=	Ford	Transit	350 HD	RWD	Van	Truck/IV	9950#	Medium	148
—	F8C	=	Ford	Transit	350 HD	AWD	Van	Truck/IV	9950#	Medium	148
—	R1X	=	Ford	Transit	250	RWD	Van	Truck/IV	9070#	High	148
—	R2X	=	Ford	Transit	250	AWD	Van	Truck/IV	9070#	High	148
—	R3X	=	Ford	Transit	250	RWD	Van EL	Truck/IV	9070#	High	148
—	R3U	=	Ford	Transit	250	AWD	Van EL	Truck/IV	9070#	High	148
—	W1X	=	Ford	Transit	350	RWD	Van	Truck/IV	9500#	High	148
—	W2X	=	Ford	Transit	350	AWD	Van	Truck/IV	9500#	High	148
—	W3X	=	Ford	Transit	350	RWD	Van EL	Truck/IV	9500#	High	148
—	W3U	=	Ford	Transit	350	AWD	Van EL	Truck/IV	9500#	High	148
—	F5X	=	Ford	Transit	350 HD	RWD	Van	Truck/IV	9950#	High	148
—	F6X	=	Ford	Transit	350 HD	AWD	Van	Truck/IV	9950#	High	148
—	F7X	=	Ford	Transit	350 HD	RWD	Van EL	Truck/IV	9950#	High	148
—	F8X	=	Ford	Transit	350 HD	AWD	Van EL	Truck/IV	9950#	High	148
—	F4X	=	Ford	Transit	350 HD	DRW - RWD	Van EL DRW	Truck/IV	9950#	High	148
—	F4U	=	Ford	Transit	350 HD	DRW - AWD	Van EL DRW	Truck/IV	9950#	High	148
—	S4X	=	Ford	Transit	350 HD	DRW - RWD	Van EL DRW	Truck/IV	10360#	High	148
—	S4U	=	Ford	Transit	350 HD	DRW - AWD	Van EL DRW	Truck/IV	10360#	High	148
—	U8X	=	Ford	Transit	350 HD	DRW - RWD	Van EL DRW	Truck/IV	11000#	High	148
—	U8U	=	Ford	Transit	350 HD	DRW - AWD	Van EL DRW	Truck/IV	11000#	High	148
—	X2Y	=	Ford	Transit	350	RWD	Pass Van	Bus/IV	9250#/9400#	Low	148
—	X9Y	=	Ford	Transit	350	AWD	Pass Van	Bus/IV	9250#/9550#	Low	148
—	X2C	=	Ford	Transit	350	RWD	Pass Van	Bus/IV	9250#/9400#	Medium	148
—	X9C	=	Ford	Transit	350	AWD	Pass Van	Bus/IV	9250#/9550#	Medium	148
—	X2X	=	Ford	Transit	350	RWD	Pass Van	Bus/IV	9250#/9400#	High	148
—	X9X	=	Ford	Transit	350	AWD	Pass Van	Bus/IV	9250#/9550#	High	148
—	U4X	=	Ford	Transit	350 HD	DRW - RWD	Pass Van EL	Bus/IV	10360#	High	148
—	U5X	=	Ford	Transit	350 HD	DRW - AWD	Pass Van EL	Bus/IV	10360#	High	148
—	R5P	=	Ford	Transit	250	RWD	Cutaway	IV	9070#	N/A	138/156
—	R7P	=	Ford	Transit	250	AWD	Cutaway	IV	9070#	N/A	138/156
—	W5P	=	Ford	Transit	350	RWD	Cutaway	IV	9500#	N/A	138/156/178
—	W7P	=	Ford	Transit	350	AWD	Cutaway	IV	9500#	N/A	138/156/178
—	F1P	=	Ford	Transit	350 HD	RWD	Cutaway	IV	9950#	N/A	156/178
—	F2P	=	Ford	Transit	350 HD	AWD	Cutaway	IV	9950#	N/A	156/178
—	F6P	=	Ford	Transit	350 HD	RWD	Cutaway	IV	9950#	N/A	138/156/178
—	F8P	=	Ford	Transit	350 HD	AWD	Cutaway	IV	9950#	N/A	138/156/178
—	S6P	=	Ford	Transit	350 HD	RWD	Cutaway	IV	10360#	N/A	138/156/178
—	S8P	=	Ford	Transit	350 HD	AWD	Cutaway	IV	10360#	N/A	138/156/178
—	U6P	=	Ford	Transit	350 HD	RWD	Cutaway	IV	11000#	N/A	138/156/178
—	U8P	=	Ford	Transit	350 HD	AWD	Cutaway	IV	11000#	N/A	138/156/178
—	R5Z	=	Ford	Transit	250	RWD	Chassis Cab	IV	9070#	N/A	138/156
—	R7Z	=	Ford	Transit	250	AWD	Chassis Cab	IV	9070#	N/A	138/156
—	W5Z	=	Ford	Transit	350	RWD	Chassis Cab	IV	9500#	N/A	138/156/178
—	W7Z	=	Ford	Transit	350	AWD	Chassis Cab	IV	9500#	N/A	138/156/178
—	F1Z	=	Ford	Transit	350 HD	RWD	Chassis Cab	IV	9950#	N/A	156/178
—	F2Z	=	Ford	Transit	350 HD	AWD	Chassis Cab	IV	9950#	N/A	156/178
—	F6Z	=	Ford	Transit	350 HD	RWD	Chassis Cab	IV	9950#	N/A	138/156/178
—	F8Z	=	Ford	Transit	350 HD	AWD	Chassis Cab	IV	9950#	N/A	138/156/178
—	S6Z	=	Ford	Transit	350 HD	RWD	Chassis Cab	IV	10360#	N/A	138/156/178
—	S8Z	=	Ford	Transit	350 HD	AWD	Chassis Cab	IV	10360#	N/A	138/156/178
—	U6Z	=	Ford	Transit	350 HD	RWD	Chassis Cab	IV	11000#	N/A	138/156/178
—	U8Z	=	Ford	Transit	350 HD	AWD	Chassis Cab	IV	11000#	N/A	138/156/178
—	E1Z	=	Ford	Transit	150	RWD	Crew Van	Truck/IV	8670#	Low	130/148
—	E9Z	=	Ford	Transit	150	AWD	Crew Van	Truck/IV	8670#	Low	130/148
—	R1Z	=	Ford	Transit	250	RWD	Crew Van	Truck/IV	9070#	Low	130/148
—	R2Z	=	Ford	Transit	250	AWD	Crew Van	Truck/IV	9070#	Low	130/148
—	W1Z	=	Ford	Transit	350	RWD	Crew Van	Truck/IV	9250#/9500#	Low	130/148
—	W2Z	=	Ford	Transit	350	AWD	Crew Van	Truck/IV	9250#/9500#	Low	130/148

## 2023 Ford Transit

Attachment  
December 9, 2022

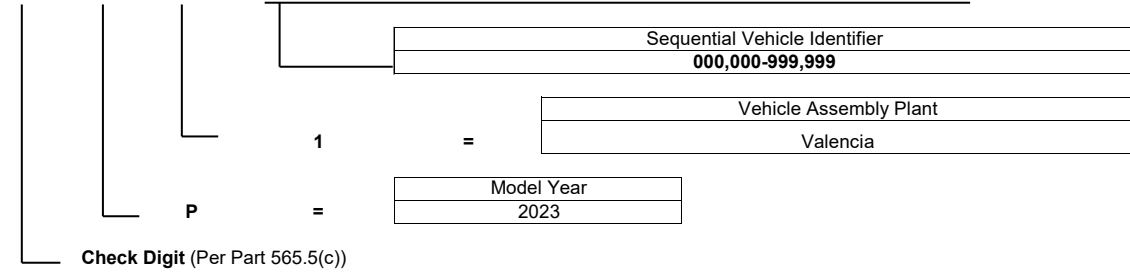
E1D	=	Ford	Transit	150	RWD	Crew Van	Truck/IV	8670#	Medium	130/148
E2D	=	Ford	Transit	150	AWD	Crew Van	Truck/IV	8670#	Medium	130/148
R1D	=	Ford	Transit	250	RWD	Crew Van	Truck/IV	9070#	Medium	130/148
R2D	=	Ford	Transit	250	AWD	Crew Van	Truck/IV	9070#	Medium	130/148
W1D	=	Ford	Transit	350	RWD	Crew Van	Truck/IV	9250#/9500#	Medium	130/148
W2D	=	Ford	Transit	350	AWD	Crew Van	Truck/IV	9250#/9500#	Medium	130/148
R1V	=	Ford	Transit	250	RWD	Crew Van	Truck/IV	9070#	High	148
R2V	=	Ford	Transit	250	AWD	Crew Van	Truck/IV	9070#	High	148
W1V	=	Ford	Transit	350	RWD	Crew Van	Truck/IV	9500#	High	148
W2V	=	Ford	Transit	350	AWD	Crew Van	Truck/IV	9500#	High	148
F4V	=	Ford	Transit	350 HD	DRW - RWD	Crew Van EL DRW	Truck/IV	9950#	High	148
F4W	=	Ford	Transit	350 HD	DRW - AWD	Crew Van EL DRW	Truck/IV	9950#	High	148
S4V	=	Ford	Transit	350 HD	DRW - RWD	Crew Van EL DRW	Truck/IV	10360#	High	148
S4W	=	Ford	Transit	350 HD	DRW - AWD	Crew Van EL DRW	Truck/IV	10360#	High	148

GVWR				Restraints						
Brake System	Class	Range (lbs)	Cat.	Manual Belts	Driver Frontal	Pass. Frontal	Side inflatable 1st Row	Side inflatable 1st & 2nd Row	Side inflatable 1st, 2nd and 3rd Row	Driver Knee
N	=	Hydraulic	G	8,501 - 9,000	3	x	x	x		
S	=	Hydraulic	H	9,001 - 10,000	3	x	x	x		
W	=	Hydraulic	3	10,001 - 14,000	3	x	x	x		
C	=	Hydraulic	G	8,501 - 9,000	2	x	x			
D	=	Hydraulic	H	9,001 - 10,000	2	x	x			
E	=	Hydraulic	3	10,001 - 14,000	2	x	x			
Y	=	Hydraulic	G	8,501 - 9,000	4	x	x	x		
B	=	Hydraulic	H	9,001 - 10,000	4	x	x	x		
R	=	Hydraulic	3	10,001 - 14,000	4	x	x	x		
K	=	Hydraulic	G	8,501 - 9,000	14	x	x	x		
L	=	Hydraulic	H	9,001 - 10,000	14	x	x	x		
M	=	Hydraulic	3	10,001 - 14,000	14	x	x	x		
Z	=	Hydraulic	G	8,501 - 9,000	6	x	x	x	x	
A	=	Hydraulic	H	9,001 - 10,000	6	x	x	x	x	
V	=	Hydraulic	3	10,001 - 14,000	6	x	x	x	x	

	Manufacturer	Make	Type
1FB	=	Ford Motor Company, USA	Bus
1FD	=	Ford Motor Company, USA	Incomplete Vehicle
1FM	=	Ford Motor Company, USA	Multipurpose Passenger Vehicle
1FT	=	Ford Motor Company, USA	Truck (Completed Vehicle)

World Manufacturer Identifier (WMI)			Brake System / GVWR / Restraint System Category	Make, Line, Series, Chassis Type, Cab or Body Type, Vehicle Type			Engine Type - Displacement, Cylinders, Fuel Type Manufacturer and Horsepower	VIN Check Digit (0-9 or X)	Vehicle Model Year	Plant of Manufacture	Alphanumeric Sequence Vehicle Identifier					
1	2	3	4	5	6	7	8	9	10	11	12	13	14	15	16	17

N	M	0	?	?	?	?	2	?	P	1	?	?	?	?	?	?
---	---	---	---	---	---	---	---	---	---	---	---	---	---	---	---	---



2	Displacement (L) / Cyl	Fuel	Mfg
	2.0L GDI	I4	Gasoline Ford

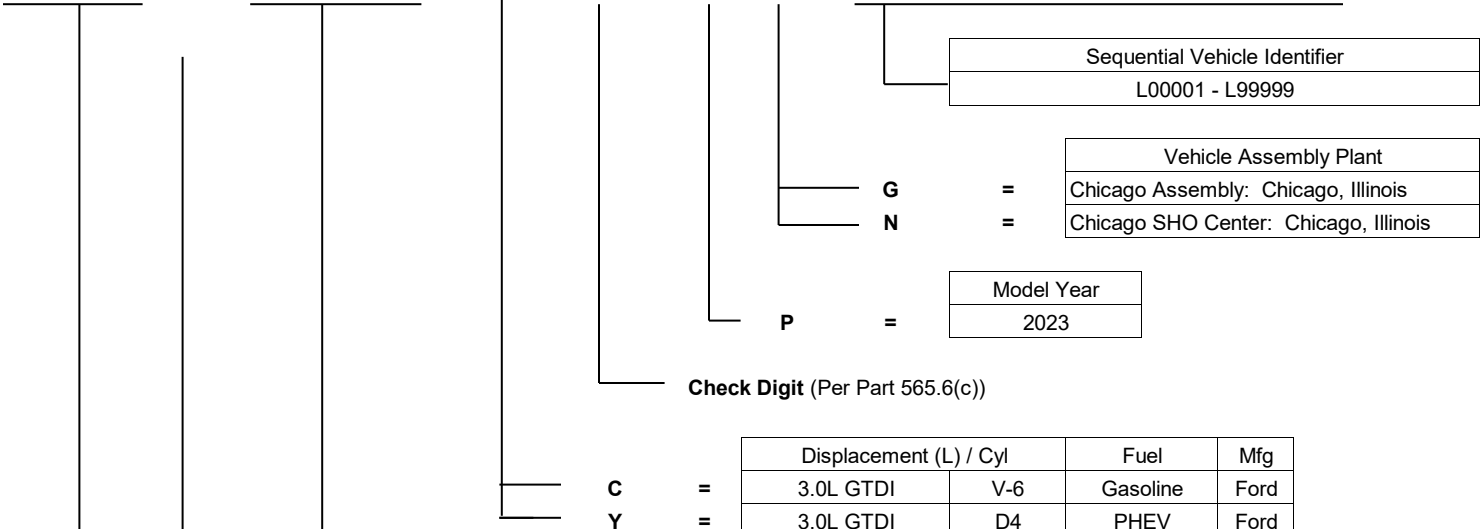
Make	Line	Series	Chassis Type	Cab/Body	Vehicle Type
Ford	Transit Connect	XL	Short Wheelbase	Van	Dual Sliding Door
Ford	Transit Connect	XL	Short Wheelbase	Van	Dual Sliding Door
Ford	Transit Connect	XL	Short Wheelbase	Van	Single Sliding Door
Ford	Transit Connect	XL	Short Wheelbase	Van	Single Sliding Door
Ford	Transit Connect	XL	Long Wheelbase	Van	Dual Sliding Door
Ford	Transit Connect	XL	Long Wheelbase	Van	Dual Sliding Door
Ford	Transit Connect	XL	Long Wheelbase	Van	Single Sliding Door
Ford	Transit Connect	XL	Long Wheelbase	Van	Single Sliding Door
Ford	Transit Connect	XLT	Short Wheelbase	Van	Dual Sliding Door
Ford	Transit Connect	XLT	Short Wheelbase	Van	Dual Sliding Door
Ford	Transit Connect	XLT	Short Wheelbase	Van	Single Sliding Door
Ford	Transit Connect	XLT	Short Wheelbase	Van	Single Sliding Door
Ford	Transit Connect	XLT	Long Wheelbase	Van	Dual Sliding Door
Ford	Transit Connect	XLT	Long Wheelbase	Van	Dual Sliding Door
Ford	Transit Connect	XLT	Long Wheelbase	Van	Single Sliding Door
Ford	Transit Connect	XLT	Long Wheelbase	Van	Single Sliding Door
Ford	Transit Connect	XL	Long Wheelbase	Van	U.S. Postal Van
Ford	Transit Connect	XL	Long Wheelbase	Wagon	
Ford	Transit Connect	XLT	Long Wheelbase	Wagon	
Ford	Transit Connect	XL	Long Wheelbase	Wagon	
Ford	Transit Connect	XLT	Long Wheelbase	Wagon	
Ford	Transit Connect	Titanium	Long Wheelbase	Wagon	

	Brake System	GVWR			Restraint Information						
		Class	Range (lbs)	Cat.	Manual Belts	Driver Frontal	Pass. Frontal	Side Inflatables			Driver Knee
								1st Row	2nd Row	3rd Row	
L	Hydraulic	D	5,001-6,000	4	x	x	x	x			
D	Hydraulic	D	5,001-6,000	4	x	x	x	x	x		
G	Hydraulic	D	5,001-6,000	4	x	x	x	x	x	x	
8	Hydraulic	D	5,001-6,000	4	x	x		x			

NM0	=	Manufacturer	Type
		Ford Motor Company of Europe	Truck

# 2023 Lincoln Aviator

World Manufacturer Identifier (WMI)			Brake System / GVWR / Restraint System	Line, Series, Chassis Type, Cab or Body Type, Vehicle Type			Engine Type - Displ., Cylinders, Fuel Type, Mfg. and HP	VIN Check Digit (0-9 or X)	Vehicle Model Year	Plant of Manufacture	Alphanumeric Sequence Vehicle Identifier					
1	2	3	4	5	6	7	8	9	10	11	12	13	14	15	16	17
5	L	M	?	J	?	?	?	?	P	?	L	?	?	?	?	?



	Make	Line	Series	Chassis Type	Cab/Body	Vehicle Type
J6W	Lincoln	Aviator	Base	RWD	4 - Door	MPV
J6X	Lincoln	Aviator	Base	AWD	4 - Door	MPV
J0W	Lincoln	Aviator	Livery	RWD	4 - Door	MPV
J0X	Lincoln	Aviator	Livery	AWD	4 - Door	MPV
J7W	Lincoln	Aviator	Reserve	RWD	4 - Door	MPV
J7X	Lincoln	Aviator	Reserve	AWD	4 - Door	MPV
J8X	Lincoln	Aviator	Grand Touring	AWD	4 - Door	MPV
J9X	Lincoln	Aviator	Black Label	AWD	4 - Door	MPV
J9Y	Lincoln	Aviator	Blk Label Grand Touring	AWD	4 - Door	MPV

	GVWR			Restraint Information							
	Brake System	Class	Range (lbs)	Manual Belts	Driver Frontal	Pass. Frontal	Side Inflatable			Driver Knee	Pass. Knee
5	Hydraulic	E	6001 - 7000	X	X	X	X	X	X	X	X
Y	Hydraulic	F	7001 - 8000	X	X	X	X	X	X	X	X

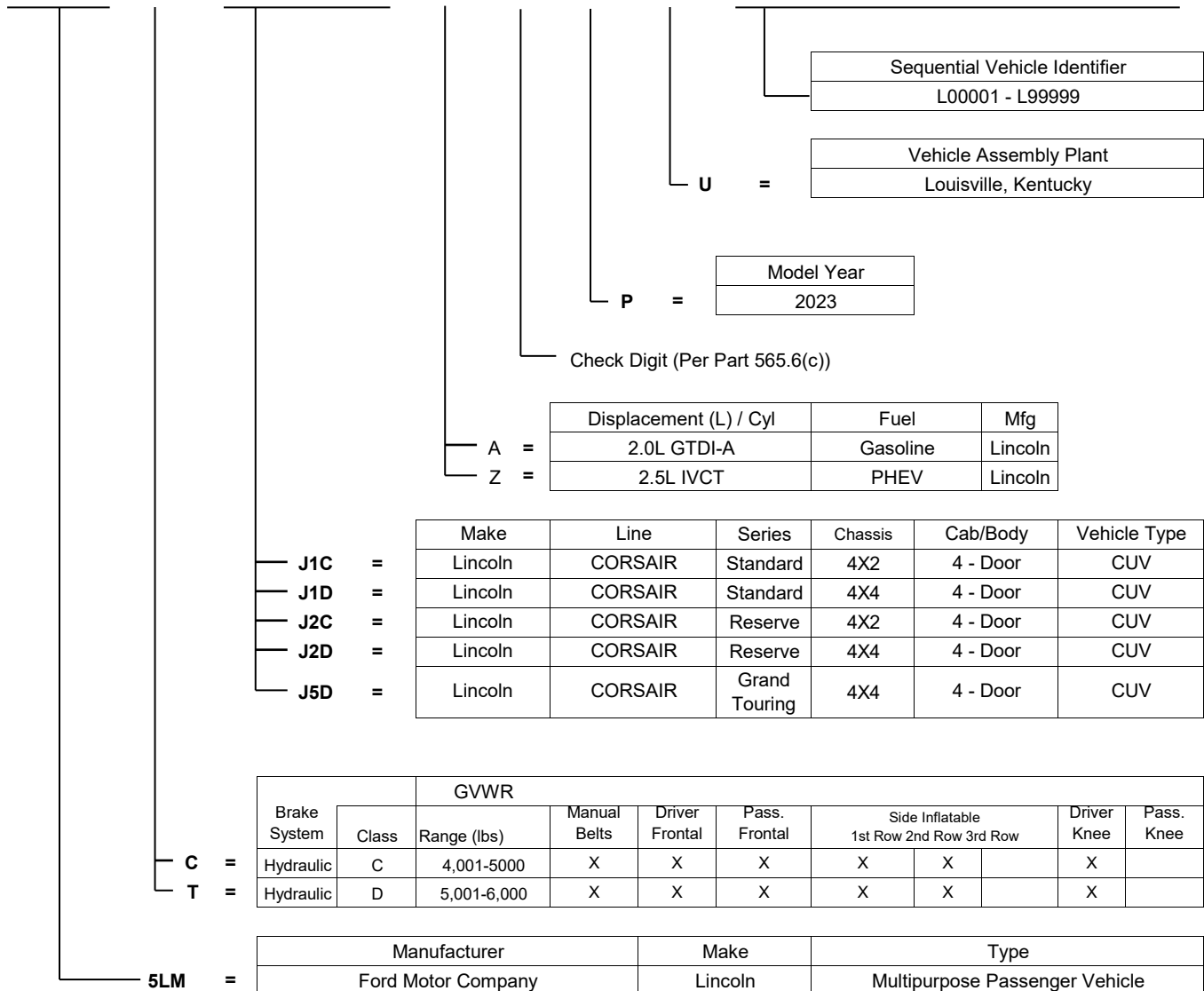
  

5LM	Manufacturer	Make	Type
=	Ford Motor Company, USA	Lincoln	Multipurpose Passenger Vehicle

# 2023 MY Lincoln Corsair

World Manufacturer Identifier (WMI)			Brake System / GVWR / Restraint System	Line, Series, Chassis Type, Cab or Body Type, Vehicle Type			Engine Type - Displ., Cylinders, Fuel Type, Mfg. and HP	VIN Check Digit (0-9 or X)	Vehicle Model Year	Plant of Manufacture	Alphanumeric Sequence Vehicle Identifier					
1	2	3	4	5	6	7	8	9	10	11	12	13	14	15	16	17

5	L	M	?	J	?	?	?	?	P	U	L	?	?	?	?	?
---	---	---	---	---	---	---	---	---	---	---	---	---	---	---	---	---

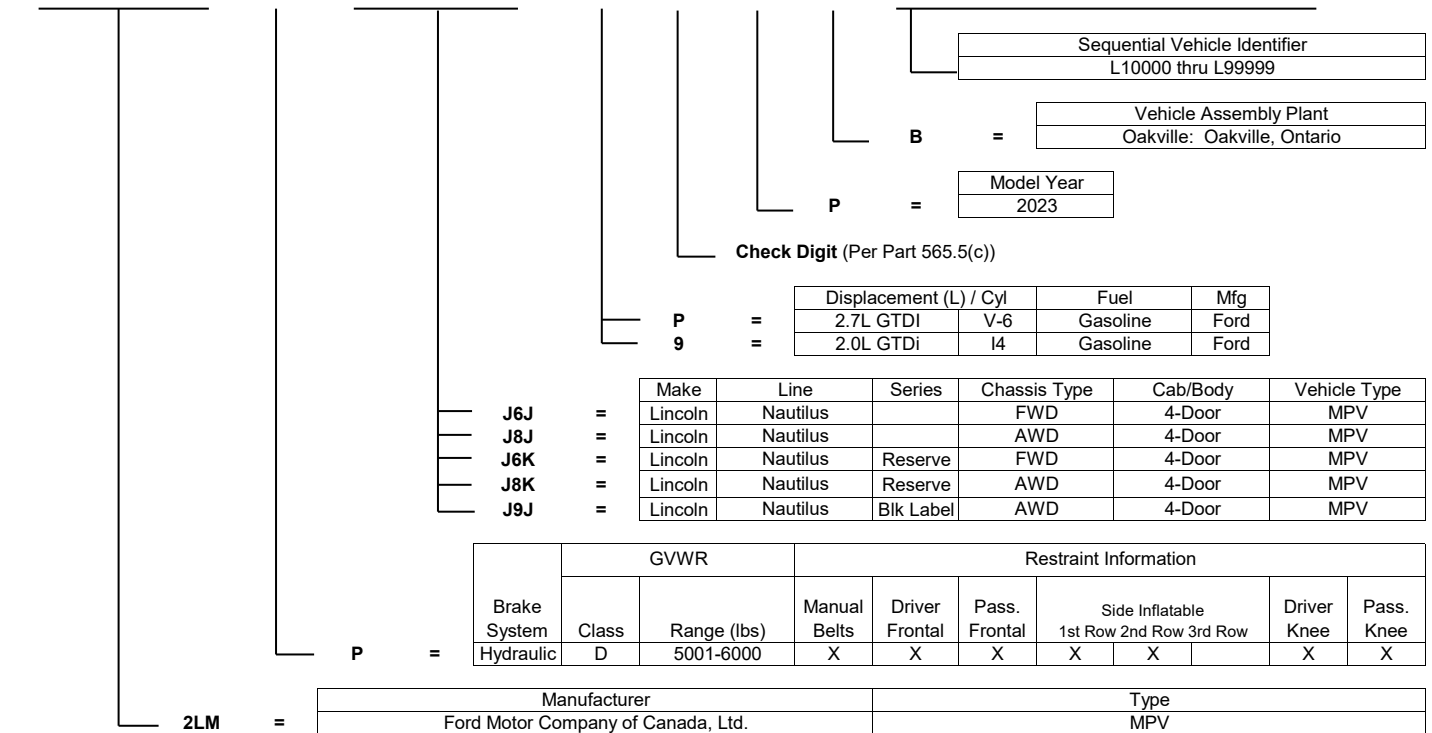


# 2023 MY Lincoln Nautilus

Attachment  
December 9, 2022

World Manufacturer Identifier (WMI)			Brake System / GVWR / Restraint System Category	Make, Line, Series, Chassis Type, Cab or Body Type, Vehicle Type	Engine Type - Displacement, Cylinders, Fuel Type Manufacturer and Horsepower	VIN Check Digit (0-9 or X)	Vehicle Model Year	Plant of Manufacture	Alphanumeric Sequence Vehicle Identifier							
1	2	3	4	5	6	7	8	9	10	11	12	13	14	15	16	17

2	L	M	P	J	?	?	?	?	P	B	?	?	?	?	?	?
---	---	---	---	---	---	---	---	---	---	---	---	---	---	---	---	---



World Manufacturer Identifier (WMI)			Brake System / GVWR / Restraint System	Line, Series, Chassis Type, Cab or Body Type, Vehicle Type			Engine Type - Displ., Cylinders, Fuel Type, Mfg. and HP	VIN Check Digit (0-9 or X)	Vehicle Model Year	Plant of Manufacture	Alphanumeric Sequence Vehicle Identifier					
1	2	3	4	5	6	7	8	9	10	11	12	13	14	15	16	17

5	L	M	J	J	?	?	G	?	P	E	L	?	?	?	?	?
---	---	---	---	---	---	---	---	---	---	---	---	---	---	---	---	---

Sequential Vehicle Identifier
<b>L00001-L99999</b>

Vehicle Assembly Plant
= Kentucky Truck: Jefferson County, Kentucky

Model Year
2023

**Check Digit (Per Part 565.6(c))**

Displacement (L) / Cyl	Fuel	Mfg
3.5L GTDI	V6	FFV/Gasoline

**G**

	Make	Line	Series	Chassis Type	Cab/Body Type	Vehicle Type
—	Lincoln	Navigator	Standard	4X2	4 - Door	MPV
—	Lincoln	Navigator	Standard	4X4	4 - Door	MPV
—	Lincoln	Navigator	Preferred	4X4	4 - Door	MPV
—	Lincoln	Navigator	Presidential	4X4	4 - Door	MPV
—	Lincoln	Navigator L	Presidential	4X4	4 - Door	MPV
—	Lincoln	Navigator L	Standard	4X2	4 - Door	MPV
—	Lincoln	Navigator L	Standard	4X4	4 - Door	MPV
—	Lincoln	Navigator	Reserve	4x2	4 - Door	MPV
—	Lincoln	Navigator L	Reserve	4x2	4 - Door	MPV
—	Lincoln	Navigator	Reserve	4X4	4 - Door	MPV
—	Lincoln	Navigator L	Reserve	4X4	4 - Door	MPV
—	Lincoln	Navigator	BL	4X4	4 - Door	MPV
—	Lincoln	Navigator L	BL	4X4	4 - Door	MPV

Brake System	GVWR		Restraints						
	Class	Range (lbs)	Manual Belts	Driver Frontal	Pass. Frontal	Side inflatable			Driver Knee
Hydraulic	F	7001 - 8000	x	x	x	1st Row	2nd Row	3rd Row	
						x	x	x	

Manufacturer	Make	Type
Ford Motor Company, USA	Lincoln	Multipurpose passenger Vehicle

**5LM**