

2025 Table Of Contents

Attachment
May 15, 2024

SUBJECT	PAGE
World Manufacturer Identifier	2
Restraints & Brakes	3
Check Digit & Model Year	4
Assembly Plant & Serialization	5
Generic Passenger Car Format	6
Generic Truck, Bus, MPV Format	7
Ford Econoline	8
Ford Escape	9
Ford Explorer	10
Ford Super Duty F-650 F-750	11
Lincoln Aviator	12
Lincoln Corsair	13
Lincoln Nautilus	14

2025 World Manufacturer Identifier

Attachment
November 20,2023

World Manufacturer Identifier (VIN Positions 1, 2, and 3)

Code	Manufacturer	Type
Passenger Cars		
1FA	Ford Motor Company, USA	Passenger Car
Generic Truck, Bus, MPV Format		
1FB	Ford Motor Company, USA	Bus
1FM	Ford Motor Company, USA	Multipurpose Passenger Vehicle
1FT	Ford Motor Company, USA	Truck - Completed Vehicle
2FM	Ford Motor Company of Canada, Ltd.	Multipurpose Passenger Vehicle
2LM	Ford Motor Company of Canada, Ltd.	Multipurpose Passenger Vehicle
3FM	Ford Motor Company, Mexico	Multipurpose Passenger Vehicle
3FT	Ford Motor Company, Mexico	Truck - Completed Vehicle
5LM	Ford Motor Company, USA	Multipurpose Passenger Vehicle
NM0	Ford Motor Company, Europe	Truck - Completed Vehicle
Incomplete Vehicles		
1FC	Ford Motor Company, USA	Basic (Stripped) Chassis
1F6	Detroit Chassis LLC, USA	Basic (Stripped) Chassis
1FD	Ford Motor Company, USA	Incomplete Vehicle
5LD	Ford Motor Company, USA	Incomplete Vehicle - Limousine

2025 Restraints & Brakes

Attachment
November 20, 2023

Restraint, Brake System and GVWR Class (VIN Position 4)

Vehicle Type	Brake System	GVWR Class **	GVWR Range	1	2	3	4	5	6	7	8	9	10	11	12	13	14	15	16	17	18	19
Passenger Car	-	-	-	K		F	B	H		6	D	U	5				G			R	T	
MPV, Truck	Hydraulic	Class A:	Less than 3,000																			
Generic Passenger Car Format	Hydraulic	Class B:	3,001-4,000		A	B				3												
MPV, Truck	Hydraulic	Class C:	4,001-5,000			Y	K	A		6	C				7							
MPV, Truck	Hydraulic	Class D:	5,001-6,000			Z	L	D	G	P	T	U	S		8							
MPV, Truck	Hydraulic	Class E:	6,001-7,000		R	6	M	E	H	B	F	W	5	2						4		
MPV, Truck	Hydraulic	Class F:	7,001-8,000	B	V	R	N	F	J		H		Y					W				
MPV, Truck	Hydraulic	Class G:	8,001-8,500				P	V														
Truck, Bus	Hydraulic	Class G:	8,501-9,000	H	C	N	Y	6	Z								K					1
Truck, Bus	Hydraulic	Class H:	9,001-10,000	J	D	S	B	7	A								L					2
Truck, Bus	Hydraulic	Class 3:	10,001-14,000	K	E	W	R	8	V								M					3
Truck, Bus	Hydraulic	Class 4:	14,001-16,000	L	F	X	T	9														4
Truck, Bus	Hydraulic	Class 5:	16,001-19,500	M	G	A	U	0														5
Truck, Bus	Hydraulic	Class 6:	19,501-26,000	N			F															6
Truck, Bus	Hydraulic	Class 7:	26,001-33,000	P																		
Truck, Bus	Air	Class 6:	19,501-26,000	W																		
Truck, Bus	Air	Class 7:	26,001-33,000	X																		
Truck, Bus	Air	Class 8:	33,001-55,000	Y																		

Restraint Category	Restraint Devices and Location
1	Manual Belts WITHOUT Air Bags
2	Manual Belts with Driver Frontal Air Bag ONLY
3	Manual Belts with Driver and Passenger Frontal Air Bags
4	Manual Belts with Driver and Passenger Frontal Air Bags and Side Inflatable Restraint (1st row)
5	Manual Belts with Driver and Passenger Frontal Air Bags and Side Inflatable Restraint (1st & 2nd Row)
6	Manual Belts with Driver and Passenger Frontal Air Bags and Side Inflatable Restraint (1st, 2nd, 3rd Row & add'l rows)
7	Manual Belts with Driver and Passenger Frontal Air Bags and Side Inflatable Restraint (1st & 2nd Row) and Driver/Passenger Knee Restraints
8	Manual Belts with Driver and Passenger Frontal Air Bags and Side Inflatable Restraint (1st & 2nd Row) and Driver Knee Restraint
9	Manual belts with Driver and Passenger Frontal Air Bags and Side Inflatable Restraint (1st, 2nd, &3rd Row) and Driver Knee Restraint
10	Manual belts with Driver and Passenger Frontal Air Bags and Side Inflatable Restraint (1st, 2nd, &3rd Row) and Driver/Passenger Knee Restraint
11	Manual belts with Driver and Passenger Frontal Air Bags and Side Inflatable Restraint (1st, 2nd, &3rd Row) and Passenger Knee Restraint
12	Manual Belts with Driver Only Frontal Air Bags and Driver Only Side Inflatable Restraint (1st Row)
13	Manual Belts with Driver Only Frontal Airbags and Side Inflatable Restraints (1st Row)
14	Manual Belts with Driver and Passenger Frontal Air Bags and Side Inflatable Restraint (1st Row) and Driver/Passenger Knee Restraints
15	Manual Belts with Driver and Passenger Frontal Air Bags and Driver Knee Restraint
16	Manual Belts with Driver and Passenger Frontal Air Bags and Side Inflatable Restraint (1st Row) and Driver Knee Restraint
17	Manual Belts with Driver and Passenger Frontal Air Bags and Side Inflatable Restraint (1st Row) and Passenger Knee Restraints
18	Manual Belts with Driver and Passenger Frontal Air Bags and Side Inflatable Restraint (1st & 2nd Row) and Passenger Knee Restraints
19	No Restraints

2025 Check Digit & Model Year

Attachment
November 20, 2023

Check Digit (VIN Position 9)

See Paragraph 565.15 of Part 565.
The check digit must have a value of 0, 1, 2, 3, 4, 5, 6, 7, 8, 9, or X.

Vehicle Model Year (VIN Position 10)

<u>VIN Code</u>	<u>YEAR</u>	<u>VIN CODE</u>	<u>YEAR</u>
4	2004	N	2022
5	2005	P	2023
6	2006	R	2024
7	2007	S	2025
8	2008	T	2026
9	2009	V	2027
A	2010	W	2028
B	2011	X	2029
C	2012	Y	2030
D	2013	1	2031
E	2014	2	2032
F	2015	3	2033
G	2016	4	2034
H	2017	5	2035
J	2018	6	2036
K	2019	7	2037
L	2020	8	2038
M	2021	9	2039

**Vehicle Assembly Plant
(VIN Position 11)**

CODE	Vehicle Assembly Plant Name: Location
B	Oakville: Oakville, Ontario
D	Ohio Assembly: Avon Lake, Ohio
E	Kentucky Truck: Louisville, Kentucky
F	Dearborn: Dearborn, Michigan
G	Chicago: Chicago, Illinois
J	Hangzhou: Hangzhou, China
K	Kansas City; Claycomo, Missouri
L	Michigan Assembly: Wayne, Michigan
M	Cuautitlan: Cuautitlan, Mexico
N	Chicago SHO Center, Chicago, Illinois
R	Hermosillo: Hermosillo, Mexico
W	Rouge Electric: Dearborn, MI
0	Detroit Empowerment Zone: Detroit, MI*
5	Flat Rock Assembly Plant (AAI): Flat Rock, MI
U	Louisville Assembly Plant: Louisville, Kentucky

* Detroit Chassis LLC and MSX International

**Sequential Vehicle Identifier
(VIN Positions 12 through 17)**

Passenger Cars:

A unique six digit numeric sequence code is assigned to each passenger car by the vehicle assembly plant of manufacture.

100001 thru 599999

Trucks, MPVs, Buses and Incomplete Vehicles:

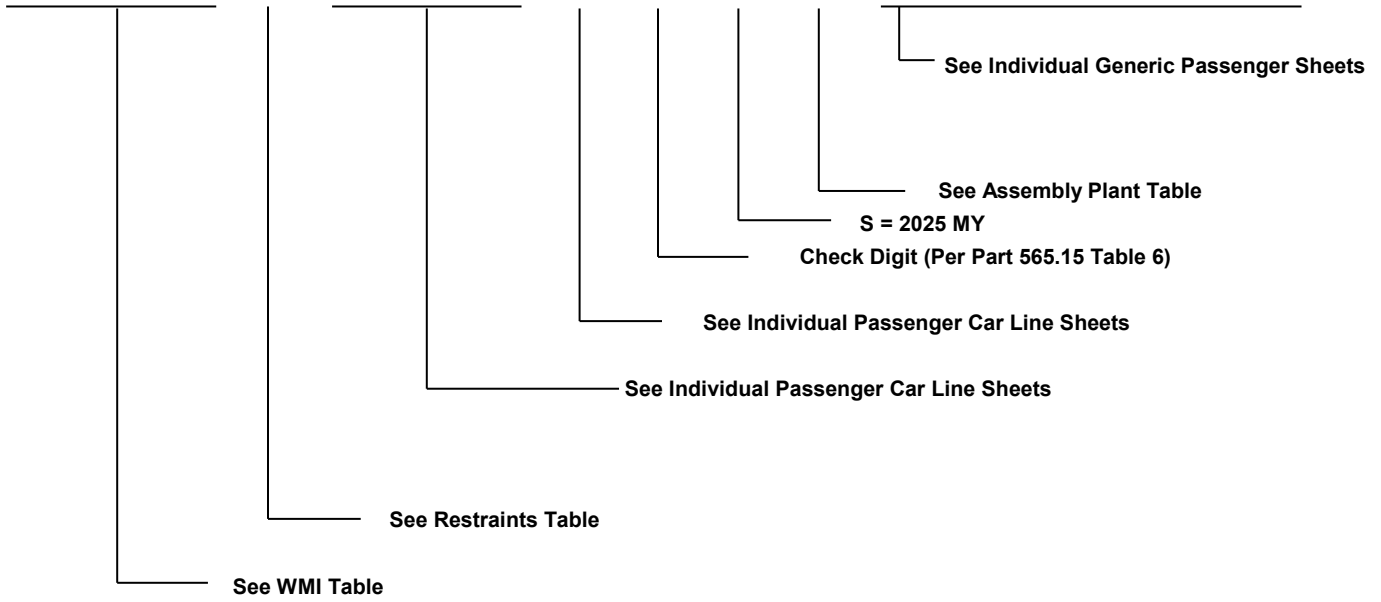
A unique six digit alphanumeric sequence code is assigned for trucks, buses, MPV's, and related incomplete vehicles.

A00001 thru H99999 - Ford Division Vehicles
L00001 thru L99999 - Lincoln Division Vehicles

2025 Generic Passenger Car Format

Attachment
November 20, 2023

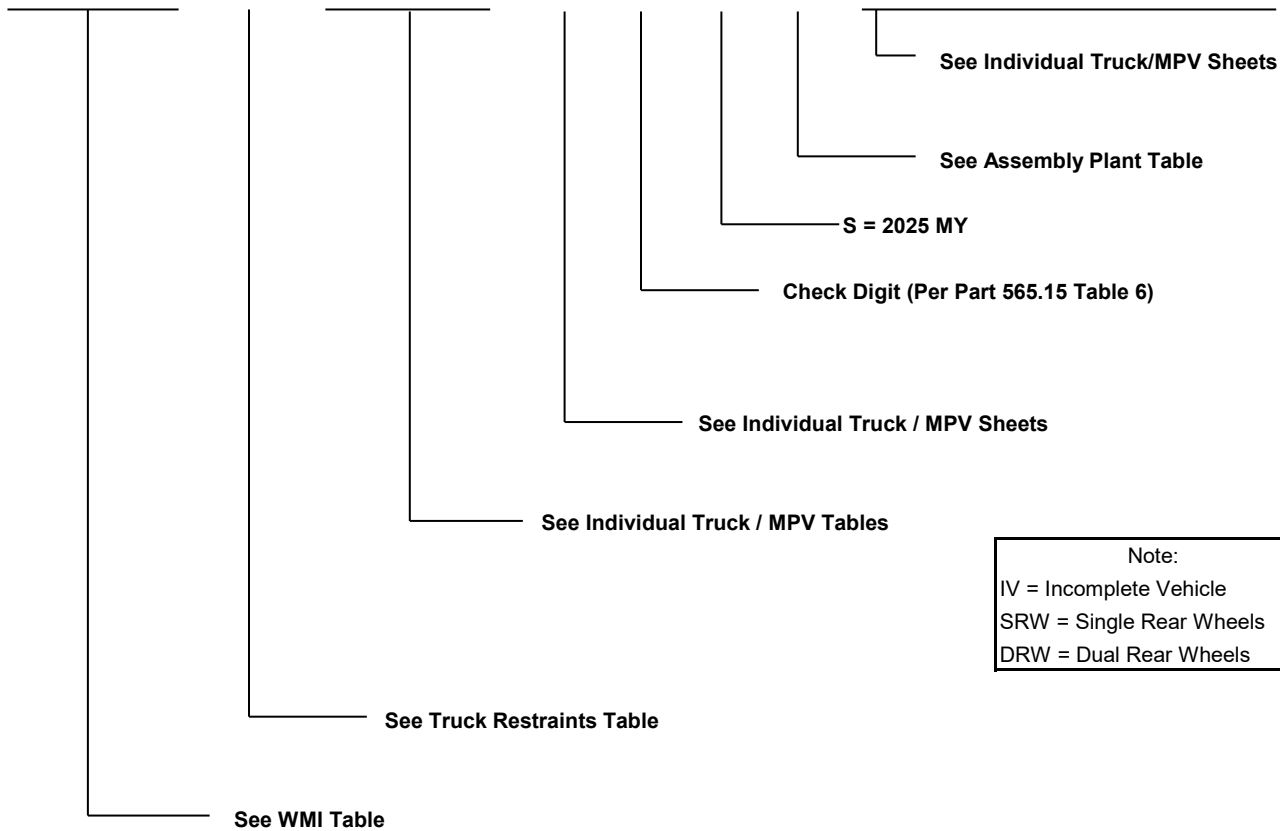
World Manufacturer Identifier (WMI)			Restraint System Category	Make, Car Line, Series, Body Type			Engine Type - Displacement, Cylinders, Fuel Type and Manufacturer	VIN Check Digit (0-9 or X)	Vehicle Model Year	Plant of Manufacture	Numerical Sequence Vehicle Identifier					
1	2	3	4	5	6	7	8	9	10	11	12	13	14	15	16	17
?	?	?	?	?	?	?	?	?	R	?	?	?	?	?	?	?



2025 Generic Truck, Bus, MPV Format

Attachment
November 20, 2023

World Manufacturer Identifier (WMI)			Brake System / GVWR / Restraint System Category	Make, Line, Series, Chassis Type, Cab or Body Type, Vehicle Type			Engine Type - Displacement, Cylinders, Fuel Type and Manufacturer	VIN Check Digit (0-9 or X)	Vehicle Model Year	Plant of Manufacture	Alphanumeric Sequence Vehicle Identifier					
1	2	3	4	5	6	7	8	9	10	11	12	13	14	15	16	17
?	?	?	?	?	?	?	?	?	S	?	?	?	?	?	?	?



Note:

IV = Incomplete Vehicle
 SRW = Single Rear Wheels
 DRW = Dual Rear Wheels

2025 MY Ford Econoline

Attachment
November 20, 2023

World Manufacturer Identifier (WMI)			Brake System / GVWR / Restraint System	Line, Series, Chassis Type, Cab or Body Type, Vehicle Type			Engine Type - Displ./Cyl., Fuel Type, Mfg.	VIN Check Digit (0-9 or X)	Vehicle Model Year	Plant of Manufacture	Alphanumeric Sequence Vehicle Identifier					
1	2	3	4	5	6	7	8	9	10	11	12	13	14	15	16	17

1 F ? ? E ? ? N ? S D ? ? ? ? ? ? ?

Sequential Vehicle Identifier
C00001 - E99999

Vehicle Assembly Plant
Ohio Assembly

Model Year
2025

Check Digit (Per Part 565.5(c))

N	=	Displacement (L) / Cyl	Fuel	Mfg
		7.3L	V-8 Prem	Gasoline

E3F E3K E4F E4K	=	Make	Line	Series	Chassis Type	Cab/Body
		Ford	Econoline 350	Base	RWD	Cutaway
		Ford	Econoline 350	Base	RWD	Stripped Chassis
		Ford	Econoline 450	Base	RWD	Cutaway
		Ford	Econoline 450	Base	RWD	Stripped Chassis

			GVWR			Restraints						
			Brake System	Class	Range (lbs)	Cat.	Manual Belts	Driver Frontal	Pass. Frontal	Side inflatable		
									1st Row	2nd Row	3rd Row	
W	=	Hydraulic	3	10,001 - 14,000	3	x	x	x				
X	=	Hydraulic	4	14,001 - 16,000	3	x	x	x				
3	=	Hydraulic	3	10,001 - 14,000	19							
4	=	Hydraulic	4	14,001 - 16,000	19							
E	=	Hydraulic	3	10,001 - 14,000	2	x	x					
F	=	Hydraulic	4	14,001 - 16,000	2	x	x					

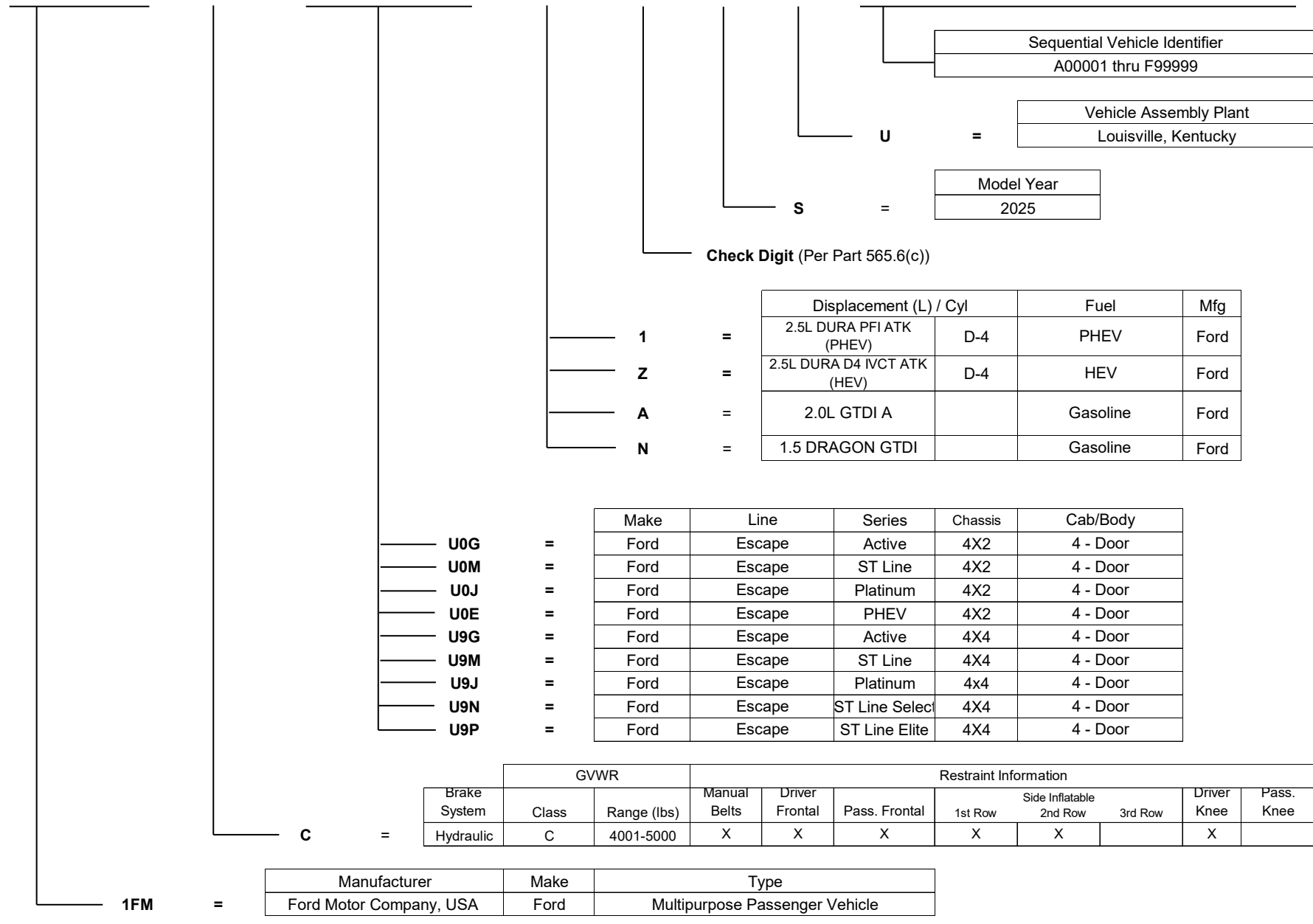
1FC 1FD	=	Manufacturer	Make	Type
		Ford Motor Company, USA	Ford	Basic (Stripped) Chassis
		Ford Motor Company, USA	Ford	Incomplete Vehicle

2025 MY Ford Escape

Attachment
May 15, 2024

World Manufacturer Identifier (WMI)			Brake System / GVWR / Restraint System	Line, Series, Chassis Type, Cab or Body Type			Engine Type - Displ., Cylinders, Fuel Type, Mfg.	VIN Check Digit (0-9 or X)	Vehicle Model Year	Plant of Manufacture	Alphanumeric Sequence Vehicle Identifier					
1	2	3	4	5	6	7	8	9	10	11	12	13	14	15	16	17

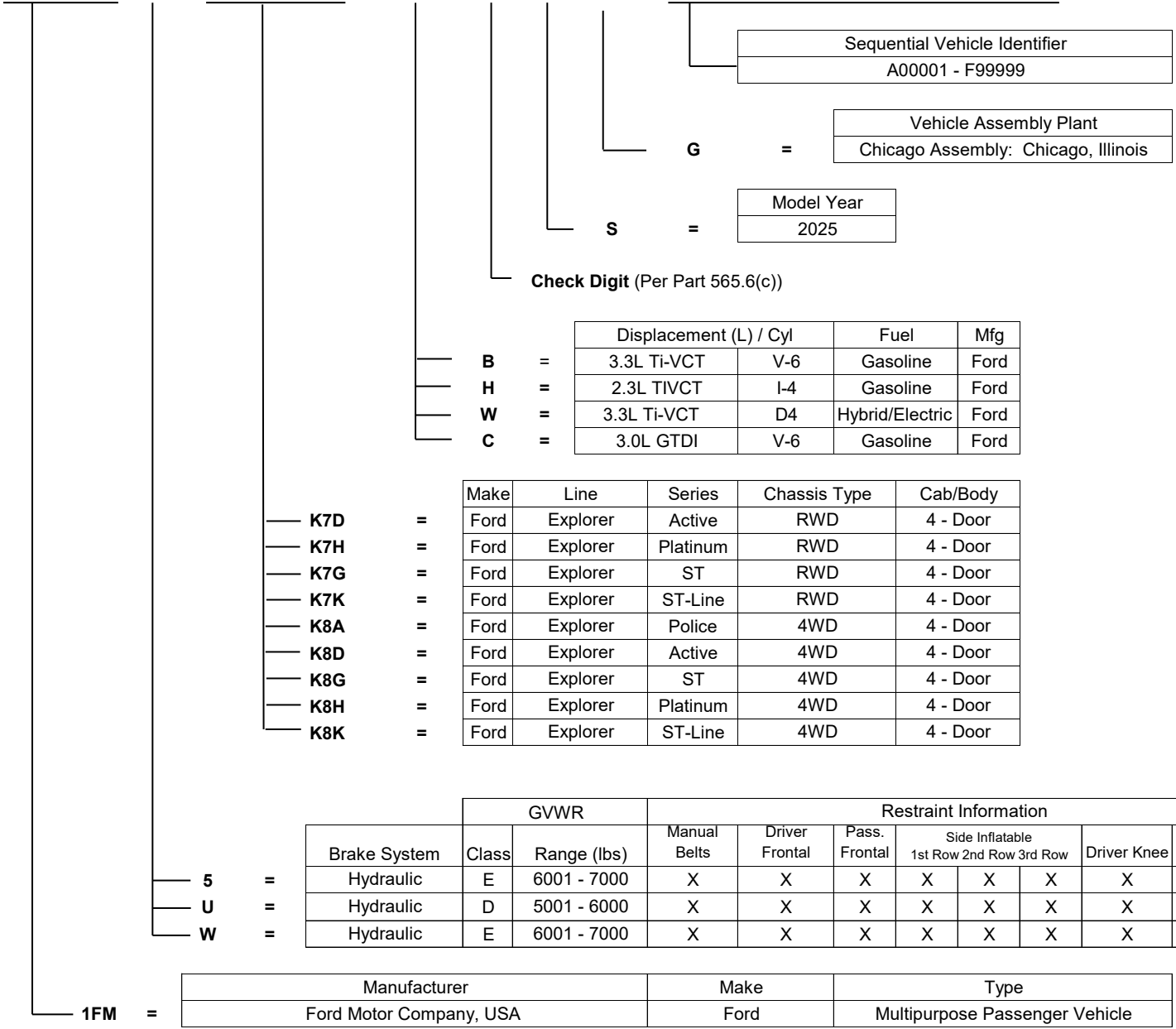
1	F	M	C	U	?	?	?	?	S	U	?	?	?	?	?	?
---	---	---	---	---	---	---	---	---	---	---	---	---	---	---	---	---



2025 MY Ford Explorer

World Manufacturer Identifier (WMI)			Brake System / GVWR / Restraint System	Line, Series, Chassis Type, Cab or Body Type, Vehicle Type			Engine Type - Displ./Cylinders, Fuel Type, and Mfg.	VIN Check Digit (0-9 or X)	Vehicle Model Year	Plant of Manufacture	Alphanumeric Sequence Vehicle Identifier					
1	2	3	4	5	6	7	8	9	10	11	12	13	14	15	16	17

1	F	M	?	K	?	?	?	?	S	G	?	?	?	?	?	?
---	---	---	---	---	---	---	---	---	---	---	---	---	---	---	---	---

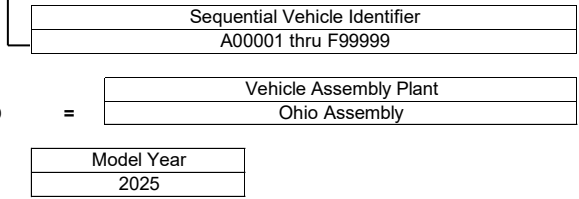


2025 MY Ford Super Duty F-650 F-750

Attachment
November 20, 2023

World Manufacturer Identifier (WMI)			Brake System / GVWR / Restraint System	Line, Series, Chassis Type, Cab or Body Type, Vehicle Type			Engine Type - Displ./Cylinders, Fuel Type, and Mfg.	VIN Check Digit (0-9 or X)	Vehicle Model Year	Plant of Manufacture	Alphanumeric Sequence Vehicle Identifier					
1	2	3	4	5	6	7	8	9	10	11	12	13	14	15	16	17

1 F D ? ? ? ? ? ? ? S D ? ? ? ? ? ? ?



Check Digit (Per Part 565.6(c))

	Displacement (L) / Cyl	Fuel	Manufacturer
C =	6.7L (Standard)	V-8 Diesel	Ford
E =	6.7L (Medium)	V-8 Diesel	Ford
X =	6.7L (High)	V-8 Diesel	Ford
N =	7.3L	V-8 Gas/Gaseous Prep	Ford

	Make	Line	Series	Chassis Type	Cab or Body Type	Type
F6A =	Ford	F-Super Duty Gas	F-650	DRW 4X2	Reg Cab Straight Frame	IV
F6C =	Ford	F-Super Duty Gas	F-650	DRW 4X2	Reg Cab Straight Frame	IV
F6D =	Ford	F-Super Duty Diesel	F-650	DRW 4X2	Reg Cab Straight Frame	IV
F7A =	Ford	F-Super Duty Gas	F-750	DRW 4X2	Reg Cab Straight Frame	IV
F7D =	Ford	F-Super Duty Diesel	F-750	DRW 4X2	Reg Cab Straight Frame	IV
W6A =	Ford	F-Super Duty Gas	F-650	DRW 4X2	Crew Cab Straight Frame	IV
W6D =	Ford	F-Super Duty Diesel	F-650	DRW 4X2	Crew Cab Straight Frame	IV
W7A =	Ford	F-Super Duty Gas	F-750	DRW 4X2	Crew Cab Straight Frame	IV
W7D =	Ford	F-Super Duty Diesel	F-750	DRW 4X2	Crew Cab Straight Frame	IV
X6A =	Ford	F-Super Duty Gas	F-650	DRW 4X2	Super Cab Straight Frame	IV
X6D =	Ford	F-Super Duty Diesel	F-650	DRW 4X2	Super Cab Straight Frame	IV
X7A =	Ford	F-Super Duty Gas	F-750	DRW 4X2	Super Cab Straight Frame	IV
X7D =	Ford	F-Super Duty Diesel	F-750	DRW 4X2	Super Cab Straight Frame	IV

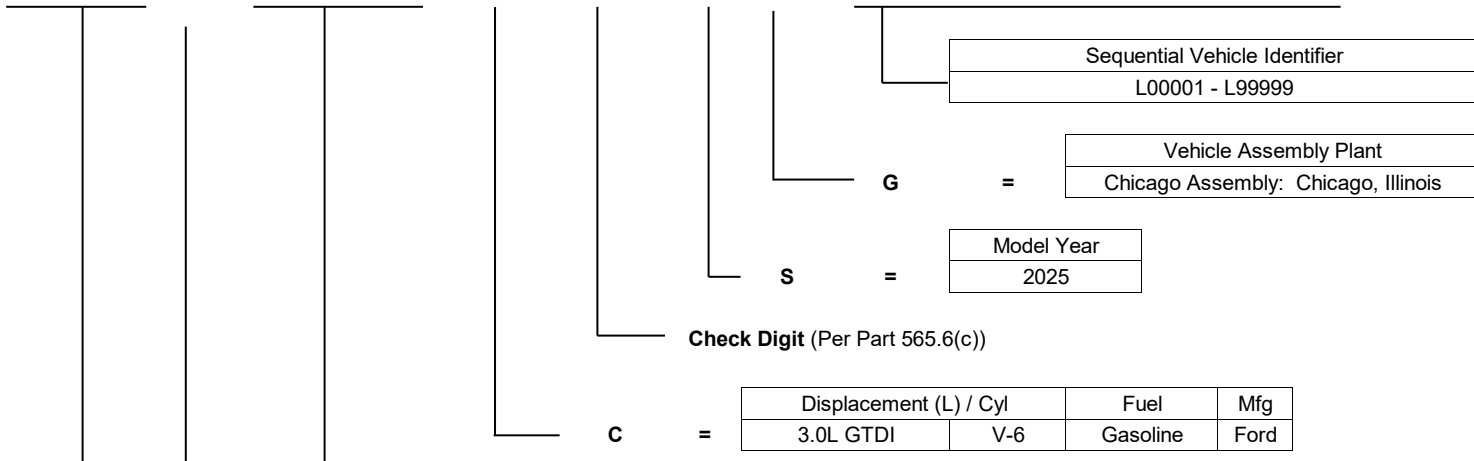
	Brake System	GVWR			Restraint Information					
		Class	Range (lbs)	Cat.	Manual Belts	Driver Frontal	Pass. Frontal	Side Inflatable		
							1st Row	2nd Row	3rd Row	
N =	Hydraulic	6	19,501 - 26,000	1	x					
P =	Hydraulic	7	26,001 - 33,000	1	x					
W =	Air	6	19,501 - 26,000	1	x					
X =	Air	7	26,001 - 33,000	1	x					
Y =	Air	8	33,001 - 55,000	1	x					

1FD	=	Manufacturer	Make	Type
		Ford Motor Company	Ford	Incomplete Vehicle

2025 Lincoln Aviator

World Manufacturer Identifier (WMI)			Brake System / GVWR / Restraint System	Line, Series, Chassis Type, Cab or Body Type, Vehicle Type			Engine Type - Displ., Cylinders, Fuel Type, Mfg.	VIN Check Digit (0-9 or X)	Vehicle Model Year	Plant of Manufacture	Alphanumeric Sequence Vehicle Identifier					
1	2	3	4	5	6	7	8	9	10	11	12	13	14	15	16	17

5 L M ? J ? ? C ? S G L ? ? ? ? ?



	Make	Line	Series	Chassis Type	Cab/Body
J6W =	Lincoln	Aviator	Base	RWD	4 - Door
J6X =	Lincoln	Aviator	Base	AWD	4 - Door
J0W =	Lincoln	Aviator	Livery	RWD	4 - Door
J0X =	Lincoln	Aviator	Livery	AWD	4 - Door
J7W =	Lincoln	Aviator	Reserve	RWD	4 - Door
J7X =	Lincoln	Aviator	Reserve	AWD	4 - Door
J9X =	Lincoln	Aviator	Black Label	AWD	4 - Door

	Brake System	GVWR		Restraint Information							
		Class	Range (lbs)	Manual Belts	Driver Frontal	Pass. Frontal	Side Inflatable			Driver Knee	Pass. Knee
							1st Row	2nd Row	3rd Row		
5 =	Hydraulic	E	6001 - 7000	X	X	X	X	X	X	X	X
Y =	Hydraulic	F	7001 - 8000	X	X	X	X	X	X	X	X

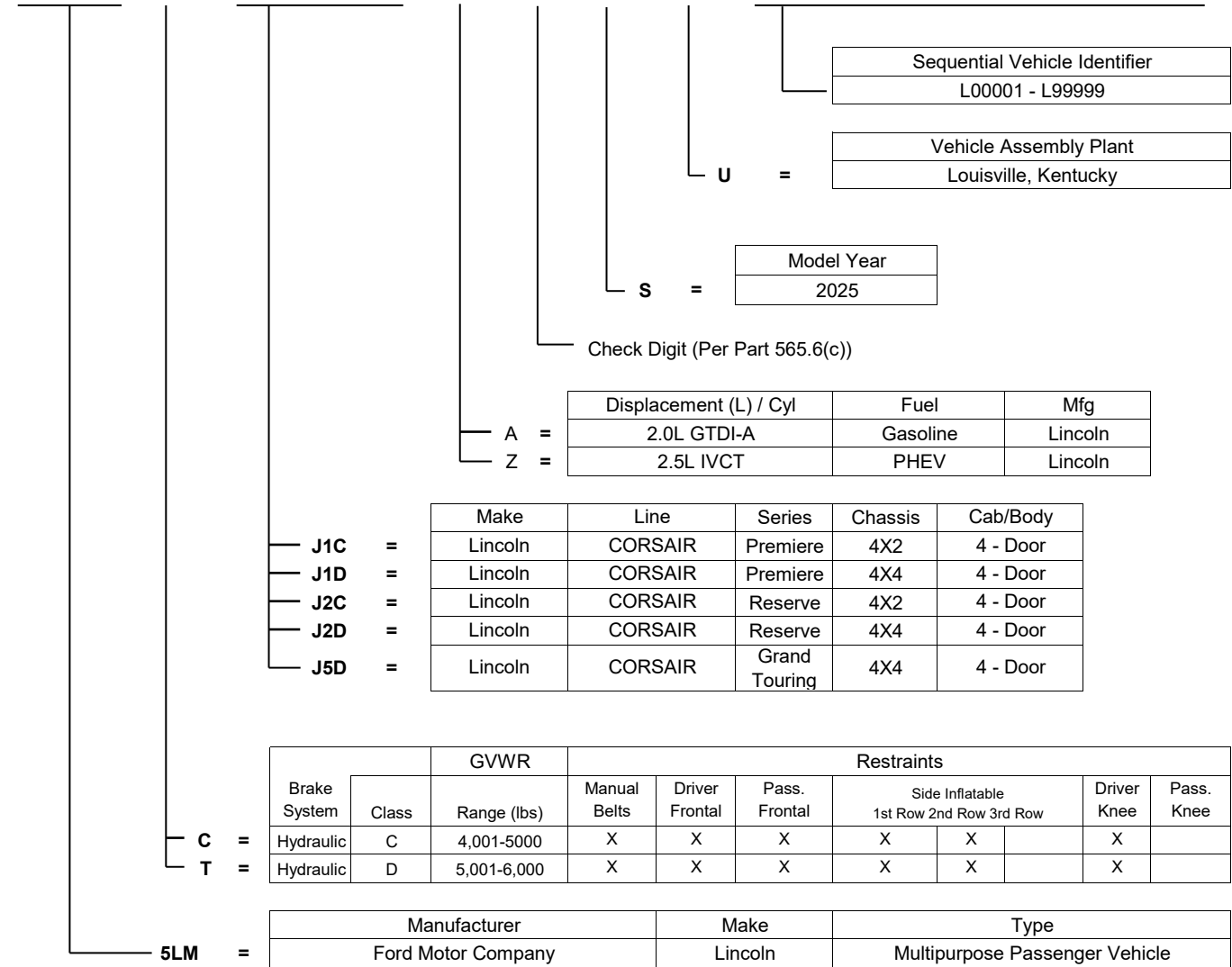
	Manufacturer	Make	Type
5LM =	Ford Motor Company, USA	Lincoln	Multipurpose Passenger Vehicle

2025 MY Lincoln Corsair

Attachment
May 15, 2024

World Manufacturer Identifier (WMI)			Brake System / GVWR / Restraint System	Line, Series, Chassis Type, Cab or Body Type			Engine Type - Displ., Cylinders, Fuel Type, Mfg.	VIN Check Digit (0-9 or X)	Vehicle Model Year	Plant of Manufacture	Alphanumeric Sequence Vehicle Identifier					
1	2	3	4	5	6	7	8	9	10	11	12	13	14	15	16	17

5	L	M	?	J	?	?	?	?	S	U	L	?	?	?	?	?
---	---	---	---	---	---	---	---	---	---	---	---	---	---	---	---	---



2025 MY Lincoln Nautilus

Attachment
May 15, 2024

World Manufacturer Identifier (WMI)			Brake System / GVWR / Restraint System Category	Make, Line, Series, Chassis Type, Cab or Body Type	Engine Type - Displacement, Cylinders, Fuel Type, Mfg	VIN Check Digit (0-9 or X)	Vehicle Model Year	Plant of Manufacture	Alphanumeric Sequence Vehicle Identifier							
1	2	3	4	5	6	7	8	9	10	11	12	13	14	15	16	17

5	L	M	P	J	?	?	?	?	S	J	?	?	?	?	?	?
---	---	---	---	---	---	---	---	---	---	---	---	---	---	---	---	---

