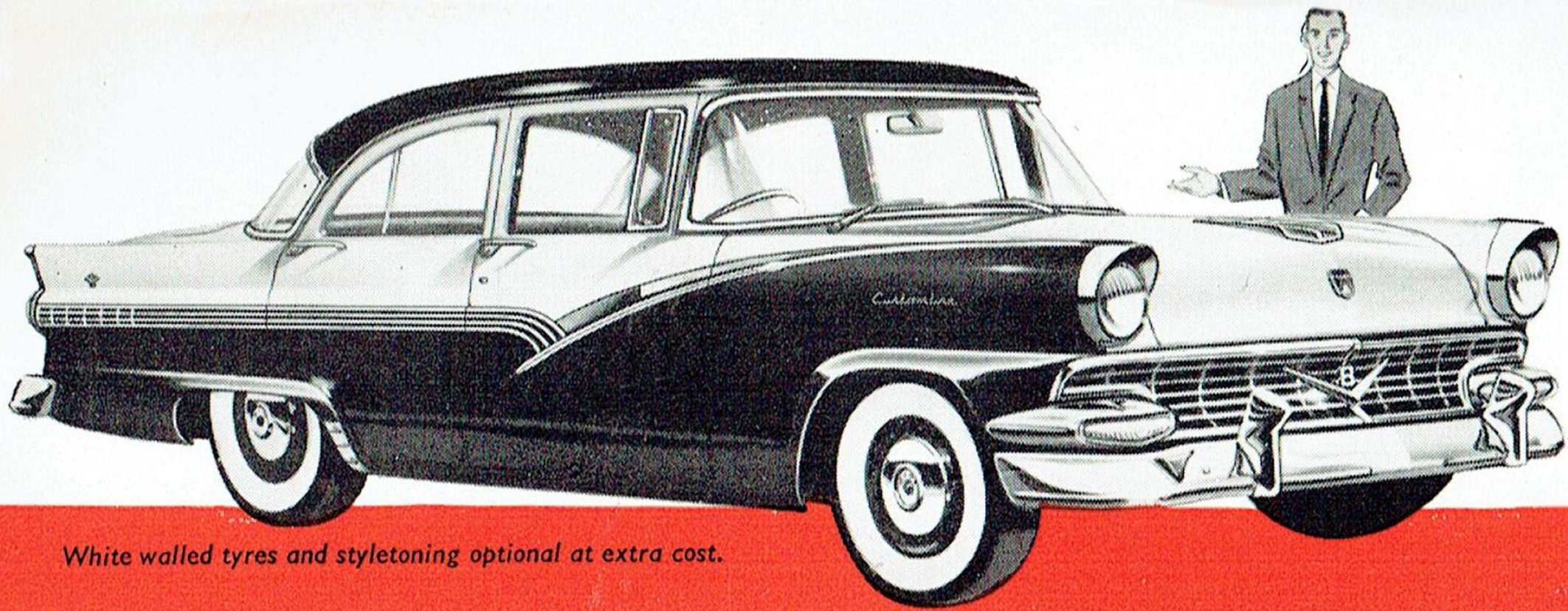


HAVE YOU EVER SAMPLED THE

BIG, BETTER DIFFERENCE IN MOTORING

— HERE'S WHY YOU SHOULD





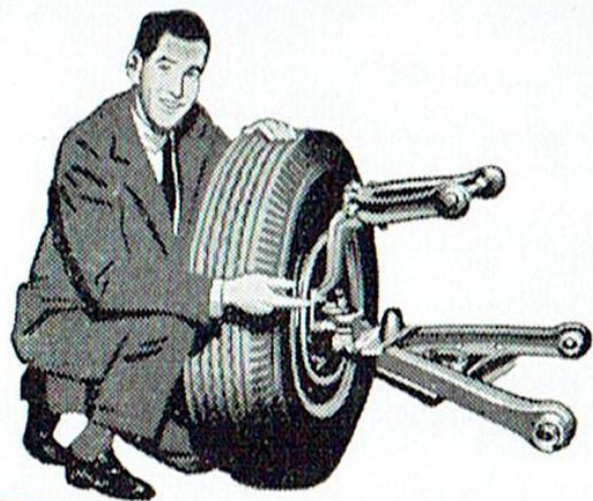
White walled tyres and styletoning optional at extra cost.

**YOU CAN SEE FORD V8 CUSTOMLINE'S BIG, BETTER DIFFERENCE
IN STYLING — BUT ONLY IN A FORD V8 DRIVE WILL YOU
KNOW THE WORTH OF THESE EXTRA-VALUE FEATURES —**

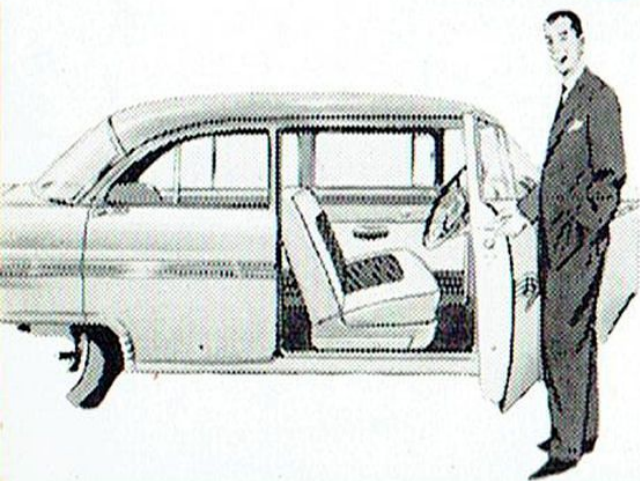


BALL-JOINT SUSPENSION—

Ford's ball-joint suspension is the newest advance in smoothness since independent springing. The springs are angle poised resulting in a greater absorption of road shocks.



**NO OTHER CAR, IRRESPECTIVE OF PRICE,
HAS THE PERFORMANCE-COMBINATION OF O.H.V. V8 ENGINE,
BALL-JOINT SUSPENSION AND K-BAR CHASSIS**



'LIVING ROOM ON WHEELS' SMARTNESS AND COMFORT

Two-toned (or single-toned) interior trims
rich, washable upholstery . . . spreading room for six
large people . . . foam rubber seat pads . . . Custom-
line's interior design sets the fashion in fine cars.

WORLD'S NEWEST OPTIONAL FEATURES FOR EVEN GREATER DRIVING EASE—

(1) *Fordomatic drive*

GREATEST DRIVING ADVANCE SINCE SELF-STARTING!

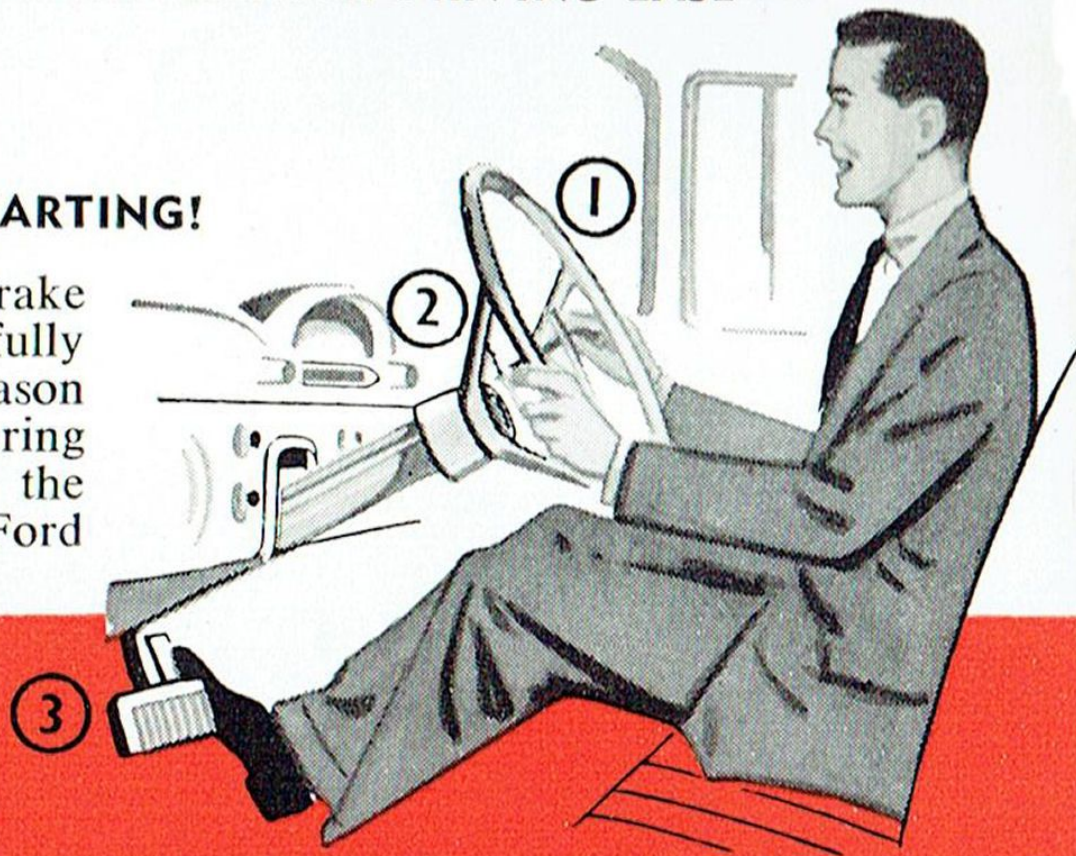
You simply press the accelerator to go and the brake to stop—and in acceleration, cruise or climb, fully automatic gear-changing is silken smooth. The reason is the combination of Fordomatic's automatic gearing efficiency, its remarkable torque convertor and the greater, more smoothly "flowing" power of the Ford O.H.V. V8 engine.

(2) **FORD POWER STEERING**

All steering effort is reduced by 75%. In parking, one finger can turn the wheel. On the road, shocks are absorbed before they reach the steering wheel yet "feel of the wheel" is retained in all driving circumstances.

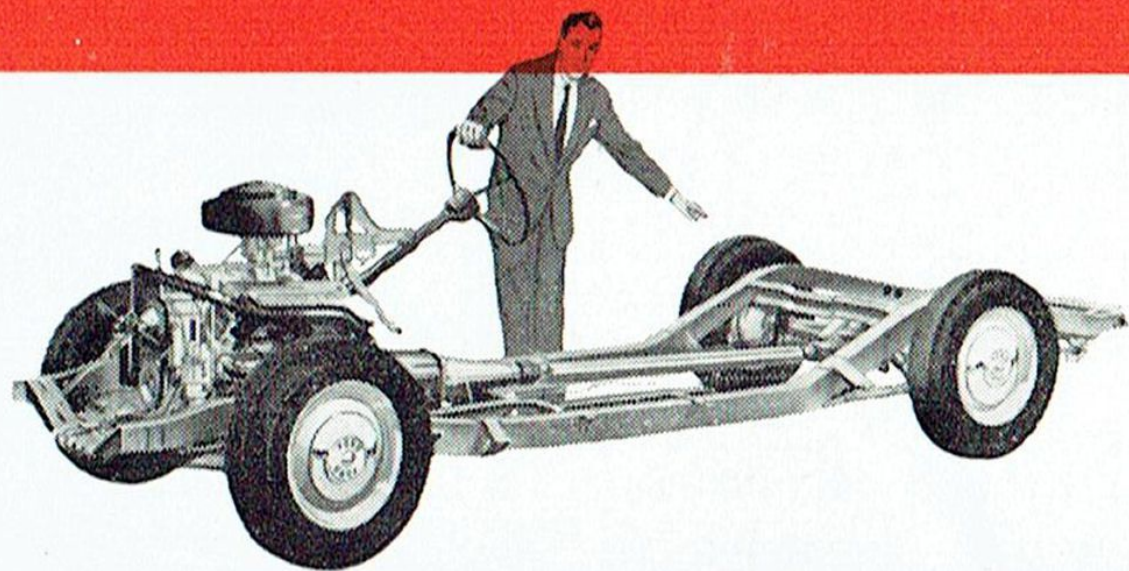
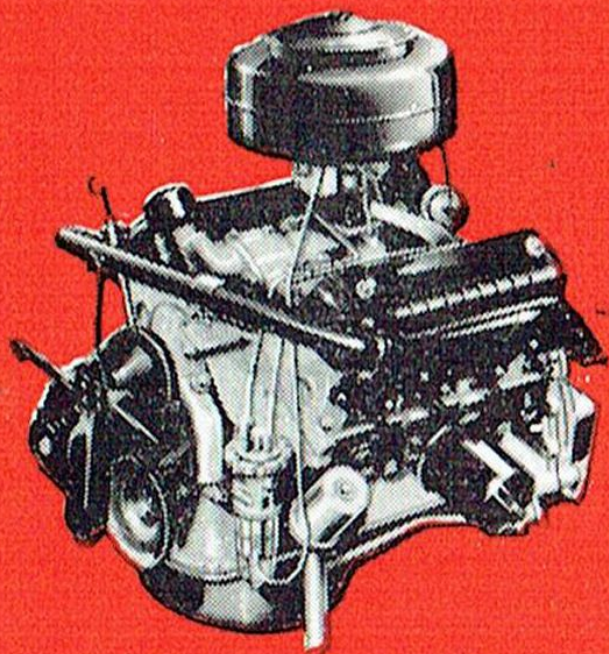
(3) **FORD POWER BRAKES**

Just a touch on the pedal and this power brake equipment handles all the effort for you. With up to one third of normal pressure on the pedal you have instant, smooth control which makes traffic and highway driving easier and more relaxing.



OVERHEAD VALVE V8 ENGINE

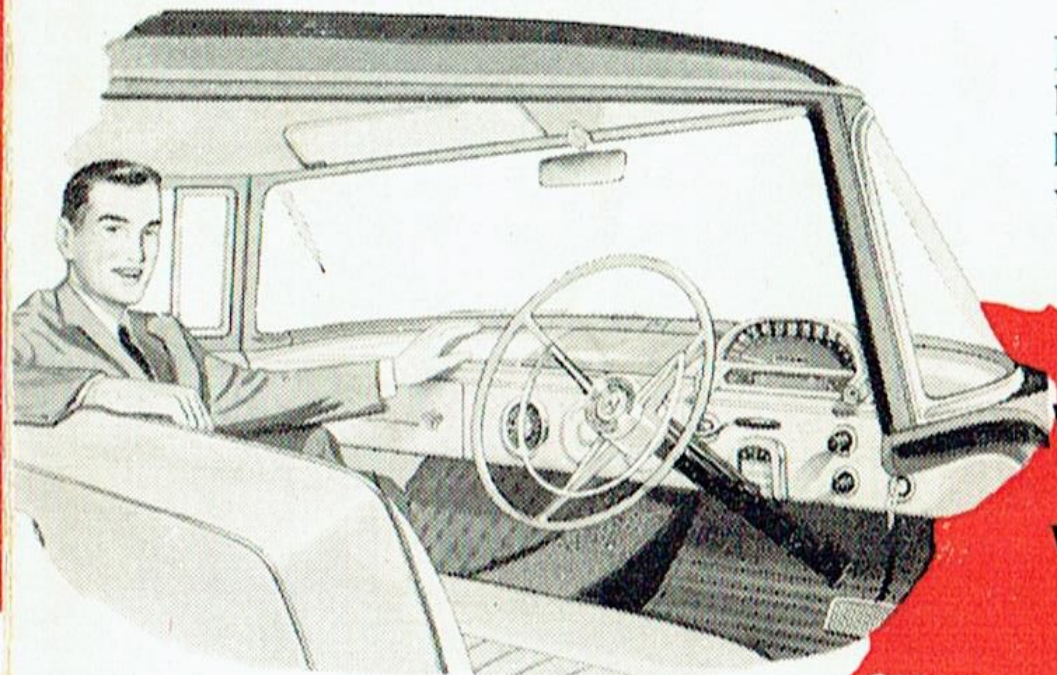
Ford's O.H.V. engine gives you a new kind of power. We call it "Trigger-torque" power—for, throughout the full range of driving speeds Ford's power is instant . . . hair-trigger in its responsiveness. But Trigger-torque isn't all you'll notice . . . Ford's low-friction Y-block design gives greater smoothness and quietness too . . . and twin-jet carburettor with automatic choke . . . improved Power Pilot and anti-fouling spark plugs mean both fuel-thrift and unequalled efficiency amongst big cars.



HUSKY K-BAR CHASSIS

Five sturdy crossmembers . . . low-friction steering for easier handling . . . extra big, double-sealed brakes, variable rate rear suspension . . . these, plus many other features make Customline the most stable and easiest to control car you can drive.

AUSTRALIANS BUY MORE FORD V8's THAN ANY OTHER BIG CAR AND THE REASON IS—**EXTRA WORTH FOR THE MONEY !**

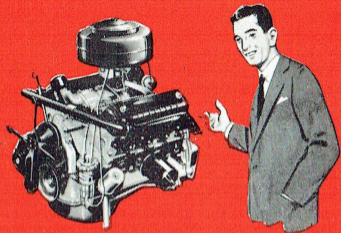


In feature after feature, Customline tops all the big cars for value. And, right now, with a really keen buying proposition, we can make this extra value even more attractive.

When can we prove this extra worth to you in a FORD V8 Drive?

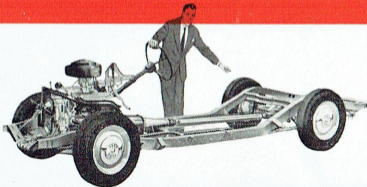
OVERHEAD VALVE V8 ENGINE

Ford's O.H.V. engine gives you a new kind of power. We call it "Trigger-torque" power—for, throughout the full range of driving speeds Ford's power is instant . . . hair-trigger in its responsiveness. But Trigger-torque isn't all you'll notice . . . Ford's low-friction Y-block design gives greater smoothness and quietness too . . . and twin-jet carburettor with automatic choke . . . improved Power Pilot and anti-fouling spark plugs mean both fuel-thrift and unequalled efficiency amongst big cars.

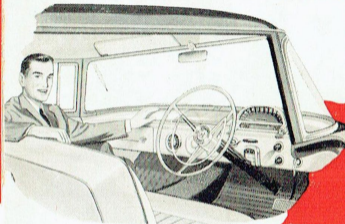


HUSKY K-BAR CHASSIS

Five sturdy crossmembers . . . low-friction steering for easier handling . . . extra big, double-sealed brakes, variable rate rear suspension . . . these, plus many other features make Customline the most stable and easiest to control car you can drive.



**AUSTRALIANS BUY MORE FORD V8's THAN ANY OTHER BIG CAR
AND THE REASON IS—EXTRA WORTH FOR THE MONEY !**



In feature after feature, Customline tops all the big cars for value. And, right now, with a really keen buying proposition, we can make this extra value even more attractive.

**When can we prove this extra
worth to you in a FORD V8 Drive?**

HAVE YOU EVER SAMPLED THE

BIG, BETTER DIFFERENCE IN MOTORING

— HERE'S WHY YOU SHOULD





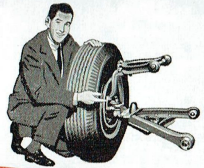
White walled tyres and styletoning optional at extra cost.

YOU CAN SEE FORD V8 CUSTOMLINE'S BIG, BETTER DIFFERENCE IN STYLING — BUT ONLY IN A FORD V8 DRIVE WILL YOU KNOW THE WORTH OF THESE EXTRA-VALUE FEATURES —

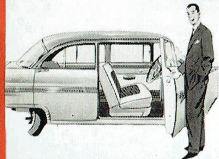


BALL-JOINT SUSPENSION—

Ford's ball-joint suspension is the newest advance in smoothness since independent springing. The springs are angle poised resulting in a greater absorption of road shocks.



**NO OTHER CAR, IRRESPECTIVE OF PRICE,
HAS THE PERFORMANCE-COMBINATION OF O.H.V. V8 ENGINE,
BALL-JOINT SUSPENSION AND K-BAR CHASSIS**



'LIVING ROOM ON WHEELS' SMARTNESS AND COMFORT

Two-toned (or single-toned) interior trims . . . rich, washable upholstery . . . spreading room for six large people . . . foam rubber seat pads . . . Customline's interior design sets the fashion in fine cars.

WORLD'S NEWEST OPTIONAL FEATURES FOR EVEN GREATER DRIVING EASE—

(1) *Fordomatic drive*

GREATEST DRIVING ADVANCE SINCE SELF-STARTING!

You simply press the accelerator to go and the brake to stop—and in acceleration, cruise or climb, fully automatic gear-changing is silken smooth. The reason is the combination of Fordomatic's automatic gearing efficiency, its remarkable torque convertor and the greater, more smoothly "flowing" power of the Ford O.H.V. V8 engine.



(2) FORD POWER STEERING

All steering effort is reduced by 75%. In parking, one finger can turn the wheel. On the road, shocks are absorbed before they reach the steering wheel yet "feel of the wheel" is retained in all driving circumstances.

(3) FORD POWER BRAKES

Just a touch on the pedal and this power brake equipment handles all the effort for you. With up to one third of normal pressure on the pedal you have instant, smooth control which makes traffic and highway driving easier and more relaxing.