

1997 Chevy Malibu





A note to car buyers: We invite you to compare the new Chevy Malibu with any other midsize car. You'll find quality you can depend on, from a name you can trust—Genuine Chevrolet. You'll also see why *Motor Trend Magazine* places Malibu right at the top of its class.

*"Chevrolet's Malibu establishes a new benchmark within the domestic midsize market based on its comfort and quietness, balanced power, attention to quality and safety, and its tremendous value.*

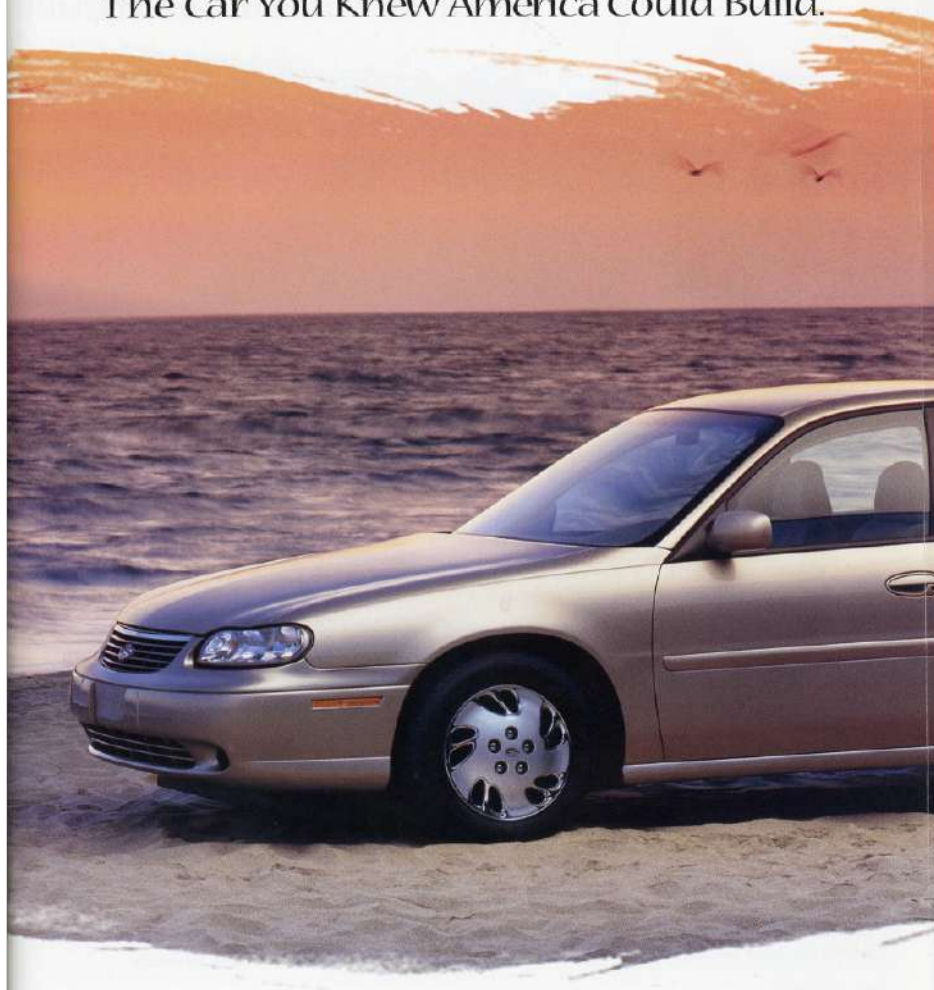
*Congratulations, Chevrolet."*

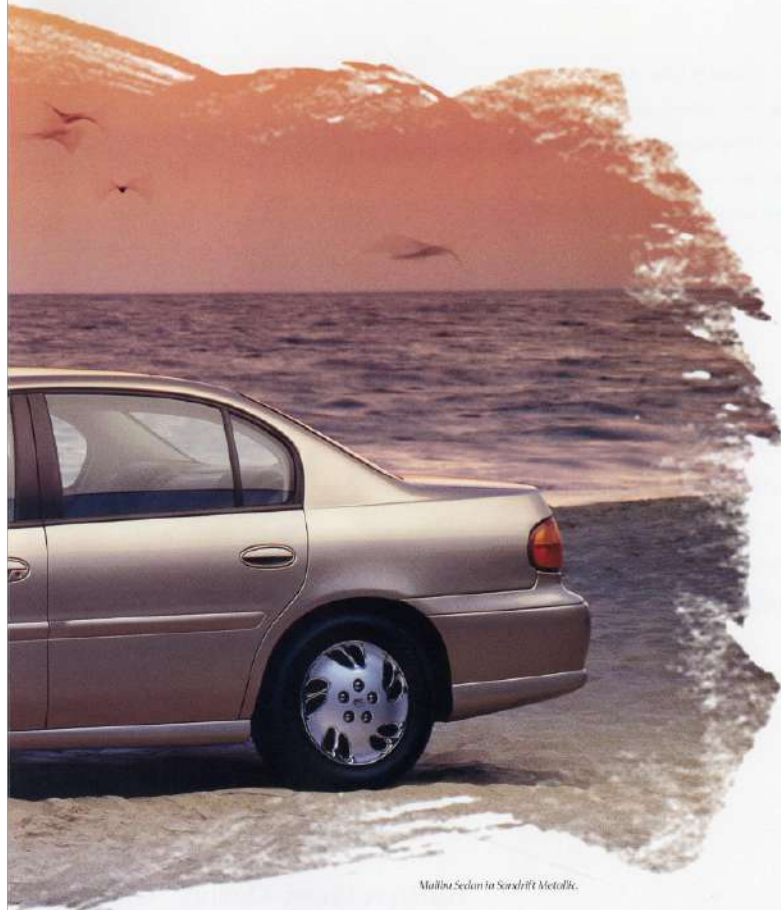
—The Editors of *Motor Trend*



The New Chevy Malibu,  
*Motor Trend 1997 Car of the Year.*

The Car You Knew America Could Build.





*Malibu Sedan in Sorablii Metallik.*



## New Malibu. Beautifully



The new Chevy Malibu is a carefully crafted balance of space, design and affordability.

The performance is smooth and very responsive, the ride is quiet, and the spaciousness for five passengers is unrivaled by Toyota Camry or Honda Accord.

In a Malibu, you can travel up to 100,000 miles before the first scheduled tune-up.\* You'll also enjoy the security of a totally passive theft deterrent system and the convenience of a Battery Saver system that provides an automatic timed shut off for interior lamps.

A four-wheel independent suspension and power rack-and-pinion steering contribute to the agile road manners, while the rigid body structure is an important reason why Malibu feels so solid, stable and well-built.

New Malibu. Carefully crafted, for you.

## Designed, Carefully Crafted.



Malibu Sedan in Medium Malachite Metallic with optional aluminum wheels.



**Breakaway Outside Rearview Mirrors**  
These mirrors (standard on both Sedan and LS Sedan) are designed to allow reattachment when bumped.



**5 MPH Bumpers**  
Malibu's energy-absorbing front and rear bumpers exceed Federal requirements, and feature resilient covers to resist minor dings and dents.



**Theatre Lighting**  
Interior courtesy lights gradually dim when doors are closed, instead of turning off abruptly.

\*Reference needs vary with different uses and driving conditions. See owner's manual for more information.

We Know How Much



**A Cup Holder For 'Lefties'**

*There are four cup holders in a Malibu, including one located to the left of the steering wheel that doubles as a small storage bin.*

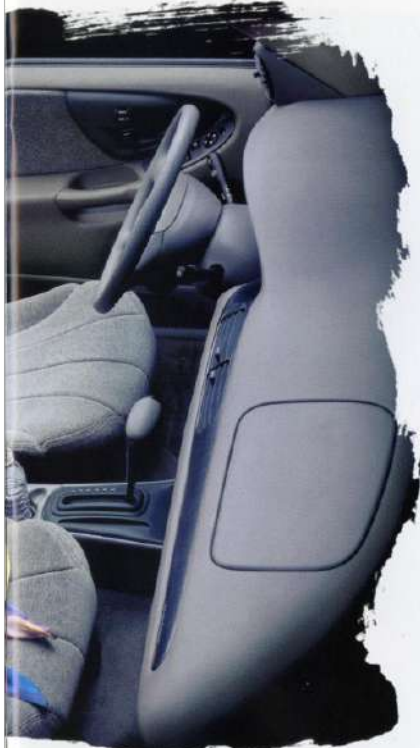


**Console with Storage**

*The center console includes a storage bin in the center armrest, plus a CD storage case beneath the armrest (shown). The console also includes a cup holder and a coin holder. Now, that's versatility!*



## You Like Your Space.



Standard Malibu cloth interior in Medium Gray.

Actually, you need your space. And it's here inside Malibu, where you'll discover the sizable difference between this Chevrolet and some other midsize sedans.

Fact is, Malibu has more room for five passengers than any Toyota Camry, Honda Accord or Nissan Altima. And it's even got a bigger trunk than Ford Taurus.

Standard convenience features include air conditioning, power trunk release, a center console with storage bin and cup holder, and intermittent variable wipers.

Spend some time in a Malibu. If you think we designed this car around your need for space, well, that's the whole idea.



### **You'll Be Comfortable.**

This is the optional Custom Cloth interior in Medium Neutral. This interior includes a split-folding rear seat and luggage-area convenience net.



### **Shoulder Belt Guide Loops**

Adjustable front shoulder belt guide loops offer several positions for optimum safety belt comfort. Inboard safety belt buckles are seat-mounted for easy buckling and unbuckling.



### **Scotchgard® Fabric Protector**

Living on the kids' side and ice cream, Scotchgard® Protector on seat fabrics, door trim, floor mats, and carpeting is standard in every Malibu.

## Look At Everything That

Family vacations — and daily commutes — bring out the best in Malibu. You'll love the room. And you'll appreciate the thoughtful details, including cup holders, coin bins, storage pockets, even auxiliary outlets for cell phones or laptop computers.

In a Malibu, everything fits. Including you.

### **More Trunk Room Than Taurus**

The Malibu trunk will accommodate up to five tie-downs for extra security. Add to that a flat carpeted floor and bumper-level loading, and you've got the room you need. A split-folding rear seat with a trunk pass-through feature is optional on Malibu Sedan and standard on LS.



### **Stretch Out Spaciousness**

In a Chevy Malibu, you'll find real comfort for the passengers. No Honda Accord or Toyota Camry sedan gives so much total interior room.

## Goes Into A Malibu.



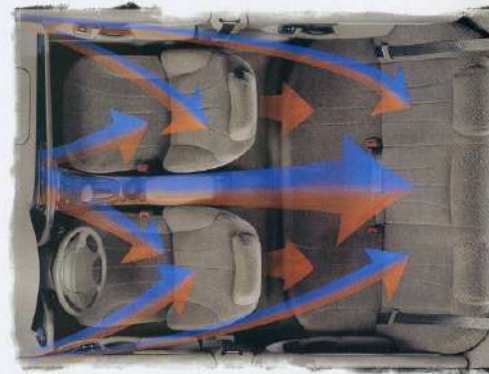
### Safety Belt Comfort Guides

Parents, you'll like this standard rear-seat safety belt comfort guides make wearing shoulder belts more comfortable for children who have outgrown child restraints. Rear outboard safety belts are designed to accommodate child seats without the use of add-on hardware or clips.



### A Breath Of Fresh Air

The powerful air conditioning heater and defroster are designed to keep you comfortable, no matter what the weather's like outside. Air vents are strategically placed to circulate heat and air quickly and quietly throughout the passenger area. There are also ducts that route air under front seats, for enhanced heat distribution.



### Rear Seat Cup Holders

In a Malibu, rear-seat passengers enjoy the convenience of cupholders, too. These pull-out cupholders, located in the rear of the console, can hold two cups or juice boxes.



### Excellence In The Details

Interior door pull handles are right where they should be and very easy to use, even with a gloved hand. It's a small detail, but one you might appreciate all winter long.



## In A Malibu, Driving



*Malibu LS interior in Medium Neutral. Some optional equipment shown.*



Is Pure Pleasure.



Everything about Malibu will bring out the driver in you, from the eager, but well-mannered engine to the comfort of body-hugging bucket seats. The steering is precise, and the brakes have great 'pedal feel'.

There are small conveniences (including an ignition switch that is located in an easy-to-reach position on the instrument panel). Controls are all placed for easy reach and softly lit for easy nighttime visibility.

Something else you'll like is a low cowl and low hoodline, for a great view of the road. Analog instrumentation includes a tachometer and trip odometer. Also standard, a tilt wheel. Enjoy!

# Malibu Sedan. It's Like A Hot

Malibu has standard features you won't find in a Honda Accord or Toyota Camry.

Every Malibu comes with standard air conditioning, a four-wheel anti-lock brake system (ABS), a sophisticated PassLock theft-deterrent system, battery rundown protection, and automatic Daytime Running Lamps. Malibu also features body panels made of 100 percent two-side galvanized steel, extended-life engine coolant, and an engine management system that totally eliminates the need for periodic timing adjustments.

Americans looking for value will find it in the carefully crafted Chevy Malibu.

#### **4-Speed Automatic Transmission**

An electronically controlled 4-speed automatic transmission is standard. A second gear start capability is useful for low-traction surfaces, such as snow or mud.



#### **AM/FM Stereo**

The standard Delco Electronics AM/FM stereo features seek, scan, digital clock, and extended range rear speakers.

#### **You'll Be Cool in A Malibu**

Air conditioning with CFC-free refrigerant is standard. Front pillar-mounted auxiliary A/C outlets help circulate air quickly and quietly throughout the passenger compartment.



# Dog With Everything On It.



**Battery-Run Down Protection**  
This system automatically shuts off interior lights (should you forget to do so) after the car has been sitting with the ignition off for 20 minutes.



#### **Rear-Seat Heat Ducts**

Rear-seat passengers keep their toes warm on the chilly days and cool on the hot days. Ducts route air under front seats so every one's comfortable.

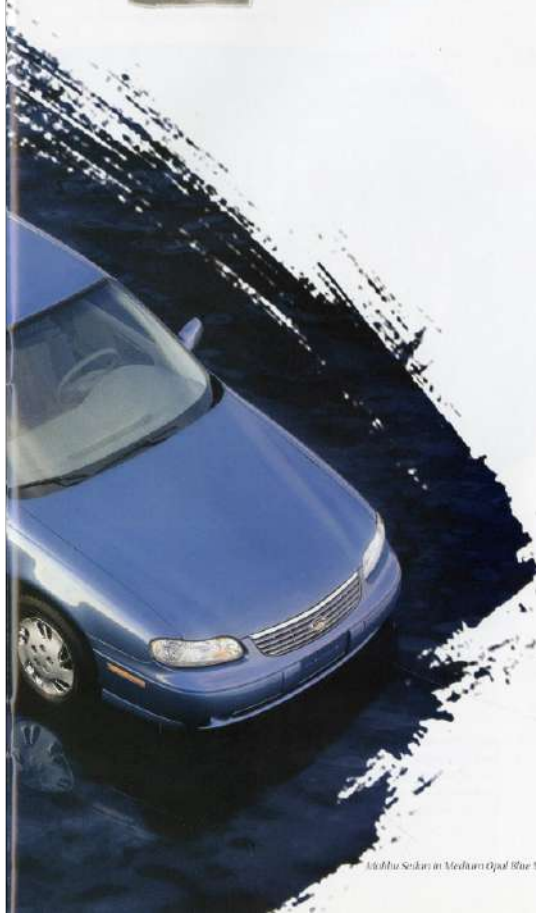
#### **Standard Security System**

PassLock, a totally passive theft-deterrent system, is standard. If an attempt is made to start your car without the proper key, the ignition system is disabled.



#### **Four-Wheel Anti-Lock Brakes**

A four-wheel anti-lock brake system (ABS) is standard on every Malibu. ABS can pump the brakes at a rate faster than even the most expert driver, enhancing braking and steering control on many surfaces.



# American Excellence,

We Americans have a thing for the spectacular. Moon walks. Worlds biggest. Worlds tallest. So its not surprising that, when we put our minds to it, we came up with a truly remarkable miniksize car.

Malibu is a comprehensive package of innovative technology, designed in quality and just plain common sense. This is American excellence, in every detail.

## 100 Percent Galvanized Steel Body

The Malibu body panels are made of two-side galvanized steel for protection against corrosion that is unsurpassed. The zinc coating actually helps prevent a surface rust on the outside due to minor chips or scratches, and helps prevent holes, which start from the inside.

## Choice Of Two Engines

Malibu is powered by a 2.4 Liter Twin Cam engine with Sequential fuel Injection, dual overhead camshafts, and four valves per cylinder. Horsepower is 150 at 5600 rpm. A 3000 hp engine is standard on Malibu LS Sedan and optional on Malibu Sedan.

## 5-MPH Bumpers

Rugged 5-mph front and rear bumpers exceed Federal requirements. Body color fascia are designed to bounce back to their original shape after minor impacts.

## Full-Frame Front Chassis

The full-frame front chassis design delivers a very pleasing and responsive driving experience while contributing to occupant safety. It is a robust, structurally rigid design.

## Liquid-Filled Engine Mounts

The Malibu engine floats on hydraulic mounts. This system actually tunes certain engine noises to levels inaudible to the human ear.

## 4-Speed Automatic Transmission

An electronically controlled 4-speed automatic transmission is standard. This sophisticated transmission contributes to responsive performance with computerized shift control for precise, virtually undetectable shifting.





# Through And Through.

## **Innovative "Rain Gutter"**

An integral "roof ditch molding" is designed to help keep you dry when getting in or out of your Malibu on rainy days.

## **Frame-Under Glass Door Design**

This design detail improves aerodynamics and contributes to a reduction in wind noise at highway speeds. Other noise-reducing details include a specially designed radio antenna and sculpted mirrors.

## **Rigid Structure**

The all-new body structure benefits from the latest GM research in vehicle design. The impressively stiff structure contributes to a smooth ride and minimizes squeaks and rattles.

## **Six-Step Paint Process**

The foundation for this quality finish is two-side galvanized steel body panels that actually heal themselves when scratched. Then, it's onto the paint booth for phosphate coatings and a rust-fighting primer topped by a glass-smooth primer surface. Next, an anti-chip primer is applied to front hood edges and the lower body. Finally, the basecoat goes on, followed by a clearcoat for a durable shine.

## **4-Wheel Independent Suspension**

A sophisticated independent rear suspension helps to reduce noise, vibration and harshness. By utilizing aluminum suspension brackets, significant weight savings were also achieved.

## **Foam Baffles In Floor, Rockers, Body And Pillars**

The extensive and innovative use of advanced acoustic materials is designed to make Malibu a quiet car.

## **Reinforced Body Sides**

You are protected by a steel safety cage when you ride in a Chevy Malibu. This safety cage includes reinforced body sides and doors with integral steel side beams.

## **Aluminum Brake Calipers**

All aluminum front brake calipers with aluminum pistons reduce weight by 20 percent when compared with conventional systems. A special note: no asbestos materials are used for both the front pads and rear shoes.



## We Made Safety

Every new Malibu includes a standard safety package that includes dual air bags, a rugged steel safety cage surrounding the entire passenger compartment, and energy absorbing front and rear crush zones.

And significantly, the standard crash avoidance package in Malibu — including ABS and automatic Daytime Running Lamps — is unmatched by many cars costing thousands of dollars more.

The four wheel anti lock brake system (ABS) helps maintain steering control and minimizes wheel lockup on most slippery surfaces.

The advanced safety belt system includes adjustable guide loops and seat-mounted buckles for comfort and convenience, and rear shoulder belts that route through the seat.

You asked for a safe car. The new Chevy Malibu may be exactly what you've been looking for.



### Dual Air Bags

Driver and front passenger air bags are standard. These air bags have been engineered to provide you with enhanced protection when used in conjunction with safety belts. Remember to always wear safety belts, even with air bags.



### Child-Proof Rear Door Locks

The standard Malibu safety package includes child security rear door locks that, when engaged, prevent the rear doors from being opened from the inside.



### Safety Seat Compatibility

Rear outboard safety belts are designed to accommodate child seats without the use of any add-on hardware or clips.



### Anti-Lock Brakes

The GM developed ABS VI four-wheel anti-lock brake system is standard on all Malibu models. You'll pay hundreds of dollars more for ABS in some in-size cars.



### Safety-Cage Construction

A rugged steel safety cage (with reinforced floor and body sills, high-strength roof construction and pillars, and steel side door-beams) surrounds the entire Malibu passenger compartment.

## Standard Equipment.

*Malibu Sedan in Medium Metallic Available.  
Some optional equipment shown.*



### **Automatic Daytime Running Lamps (DRLs)**

*They'll see you coming in your new Malibu! Reduced-intensity headlamps come on automatically to help other drivers notice your oncoming vehicle during daylight hours. Headlamps automatically adjust to regular intensity at night.*

**Energy-Absorbing Crush Zones**  
*In collisions, the front and rear structures are designed to help absorb energy in a controlled manner, so the integrity of the passenger compartment can be maintained.*



## 100,000 Miles Before

America is a big country and Chevy Malibu is designed to go the distance.

The engine in a Malibu has platinum tip spark plugs. This is one reason there are no scheduled tune-ups for up to 100,000 miles. Extended life engine coolant doesn't need to be changed for five years or 150,000 miles, whichever comes first. There are no transmission fluid changes, ever, under normal driving conditions. No engine timing adjustments. The chassis is lubed for life, and the body is warranted against rust-through for six years or 100,000 miles, whichever comes first.\*

At Chevrolet we believe you shouldn't have to buy an expensive car to get the advanced technology you need.

\*Maintenance needs vary with different uses and driving conditions. See owner's manual for more information.



### **The 100,000 Mile Tune-Up**

Both standard and optional engines are so advanced — with direct fire ignition systems and platinum-tip spark plugs — that you can travel coast to coast 85 times before the first scheduled tune-up.\*



### **Long Life Engine Coolant**

Another reason Malibu is so easy to take care of, extended life engine coolant with a scheduled replacement interval of five years or 150,000 miles,\* (whichever comes first.)





# The First Tune-Up.



Malibu Sedan in Sandrift Metallic

### Scaled For Life Transmission Fluid

The four-speed automatic transmission sets a high standard for convenience with advanced Dexron II fluid that should never need changing under normal driving conditions.\*



### No Timing Adjustments, Ever

A direct fire ignition system eliminates the need for periodic engine timing adjustments.



### Two-Side Galvanized Steel

You asked for a car that will stay new looking for a long time. That's why Malibu uses two-side galvanized steel for all body panels (including the roof) for protection against corrosion that is unsurpassed.



### The Tuned Tire

All-season Touring tires (P215/60R15) are specifically designed for and tuned to Chevy Malibu. These steel-belted radials deliver a remarkable blend of quiet ride, long tread life and excellent wet weather traction.



## The LS Sedan. A



### **Optional Electric Sunroof**

Ask anyone who's ever owned a car with a sunroof — it adds another dimension to the driving experience. This factory-installed electric power sliding sunroof includes a deep tinted glass panel with a pop-up feature.



### **Halogen Foglamps**

Standard halogen foglamps enhance your view of the road in foggy conditions and help make your vehicle more visible to other drivers.

## Very Special Malibu.



*Malibu LS Sedan in Silvermist Metallic.*

LS is the Malibu that's loaded to the max. It's got all the good stuff you'll find in the standard Malibu, and lots more.

Exterior style features that give Malibu LS its own look include styled aluminum wheels and integral foglamps. The sleek shape promises performance, and LS delivers big time, thanks to a standard 3100 V6 engine with Sequential Fuel Injection. For your convenience, LS includes power outside mirrors, a luggage-area cargo net and a split-folding rear seat with a trunk pass-through feature.

For a look inside this very special Malibu, just turn the page.



### **Remote Keyless Entry**

*Remote Keyless Entry (standard in Malibu LS) lets you lock or unlock doors or open the trunk from up to 30 feet away. "Rolling codes" prevent a potential thief from intercepting the signal from the transmitter and replaying it to gain access to the vehicle.*

## The Malibu LS Interior. You'll



Malibu LS Sedan is so nice, you'll be inventing all kinds of reasons for going places.

Interior trim is Custom Cloth, contoured for comfort and support. The LS also includes a power driver's seat, power windows with a driver's Express Down feature, and power door

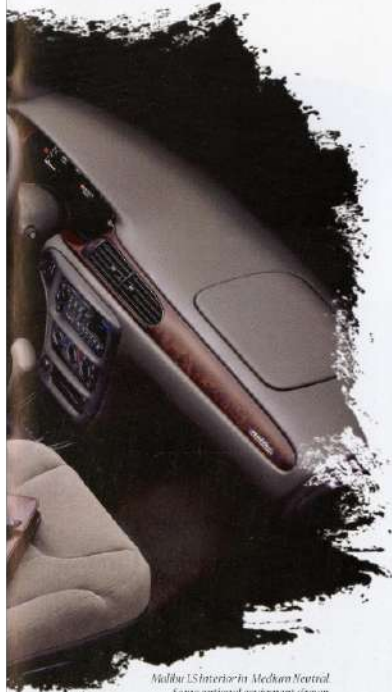
locks. The standard AM/FM stereo with cassette player features speed-compensated volume and automatic tone control. A zoned rear window defogger clears the most crucial area first (the center of the rear window). Also standard: dual mirror-mounted reading lamps.

In a Malibu LS you get the room, the style and the little luxuries that cost big money in some other midsize cars.

Maybe the family vacation should be a road trip this year.



## Want To Get In And Get Going.



*Malibu LS Interior in Medium Neutral.  
Some optional equipment shown.*



### **Split-Folding Rear Seat**

A split-folding rear seat with a trunk pass-through feature is standard on Malibu LS. This flexible design adds to Malibu's already-impressive cargo-carrying capability.



### **Standard Power Windows**

Power windows with driver's Express-Down and rear window lockout features are standard on Malibu LS. Backlit front power windows and power door-lock switches add to night-time convenience.



### **Electronic Speed Control/ Tilt Steering Wheel**

It's easy to get comfortable in a Malibu LS with a standard six-position tilt steering wheel. The electronic speed control includes Resume, Speed and Accelerate/Coast controls on the steering wheel.



### **Stereo With CD Player**

You can choose from two optional stereos (one with CD player, and one with both CD and cassette players). These optional stereos include speed-compensated volume and automatic time control (which tailors equalization to the type of music being heard) and extended-range rear speakers.

No Wonder We



Sure the Interstate will get you there a little faster. But Chevy Malibu was just born for a twisting piece of two lane blacktop.

The response is smooth and strong, and if the confident attitude reminds you of an expensive European import, well, that's intentional.

## Invented Route 66.



*Altima Sedan in Dark Jade Green Metallic.  
Some optional equipment shown.*

Power. Another Reason



*Cobalt LS Sedan in Black*



# Malibu Is Your Best Buy.

Who offers a standard engine with 150 horsepower? Not Camry. Not Accord. They make do with less. But you don't have to.

Chevy Malibu has a 150-horse Twin Cam engine that gives you wonderfully responsive performance in city traffic operation and freeway merging situations.

For even more power, a 300 V6 engine is standard in Malibu LS and optional in Malibu Sedan.

The response is enhanced by Touring tires and a tuned four-wheel independent suspension — with aluminum components that reduce unsprung weight — for smooth, crisp ride and handling.

## 2.4 Liter, Twin Cam Engine

The 16-valve, dual overhead camshaft engine has more power than you'll find in a standard Camry or Accord. Sequential Fuel Injection and dual balance shafts add to the smooth, quiet action. Horsepower is 150 at 5600 rpm.



## 300 V6 with Sequential Fuel Injection

The 300 V6 provides exceptional high rpm power for quick response at highway speeds and strong low rpm torque for outstanding acceleration. This 195-hp V6 is standard in Malibu LS Sedan and optional in Malibu Sedan.



## 24/32 EPA-Estimated MPG

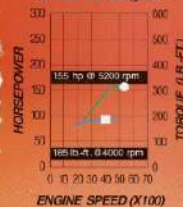
Malibu with the Twin Cam engine gets an EPA-estimated 24 MPG city/32 highway. The V6 Malibu also features impressive numbers: an EPA-estimated 31/40 city/highway.

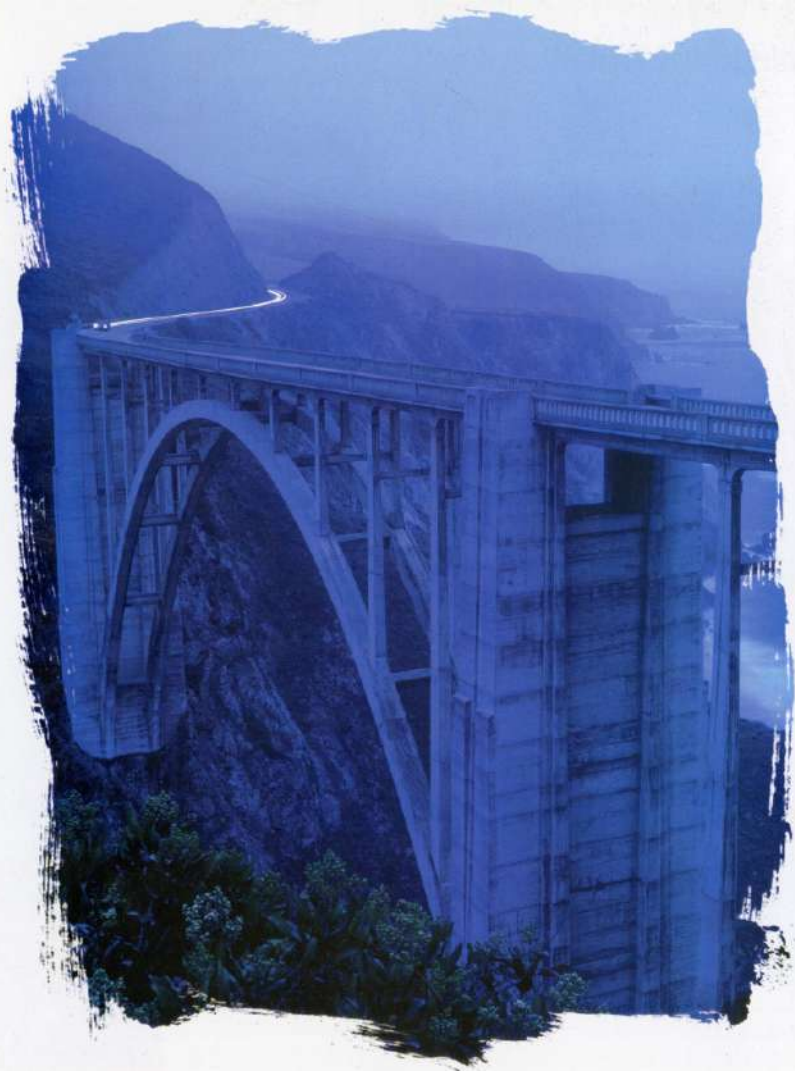


## You'll Love the Response

Torque (and lots of it) is what makes the new Malibu such a responsive performer. The optional 300 V6 puts out 185 lb.-ft. at 2000 rpm. Horsepower is 155 at 3200 rpm.

## 300 V6 Engine





# You Never Travel Alone.

Trust. It's not just about being an American brand for over 85 years. It's about being there when people need you. And trust isn't something you can claim. It's something you earn. Car by car. Day by day. One vehicle at a time.

Genuine Customer Care means we'll be here when you need us, no matter where you are in the USA. That's a promise.

As a Malibu owner, you are covered by this comprehensive owner protection plan, which includes the following:

#### **Bumper to Bumper Warranty**

The GM 3-year/36,000-mile (whichever comes first) limited warranty covers repairs for all 1997



Malibus, including labor and parts, to correct any defects in material or workmanship occurring during the warranty period.

The complete vehicle (including tires) will be covered for 3 years or 36,000 miles, whichever comes first. **There is no deductible.** See your Chevrolet dealer for full terms of this limited warranty.

#### **24-Hour Roadside Assistance**

Lost? We'll help you find your way. Locked out? We'll get you back in your car. Out of gas?



We'll get you gas. Roadside Assistance is provided through a toll-free number (1-800-CHEV-USA) 24 hours a day, 365 days a

year. Roadside Assistance offers two levels of service: Basic Care and Courtesy Care.

**Roadside Basic Care** provides:

- Free towing for warranty repairs (to closest dealer)
- Over the phone basic technical advice
- Available dealer services at reasonable costs (i.e., wrecker services, locksmith/key service, glass repair, etc.).

Roadside Basic Care covers you for as long as you own your Malibu.

**Roadside Courtesy Care** provides all the features of Roadside Basic Care, plus:

- Free towing (to closest dealer)
- Free locksmith/key service (when keys are lost on the road or locked inside)
- Free flat tire change service or jump start
- Free fuel delivery on the road

Roadside Courtesy Care is available to you for a period of 3 years or 36,000 miles (whichever comes first).

#### **Courtesy Transportation**

Customers who purchase or lease a 1997 Malibu are eligible for Courtesy Transportation



(at no charge) when their vehicles are left at a participating dealership

for repairs covered under the 3-year/36,000-mile Bumper to Bumper limited warranty. Courtesy Transportation at participating dealers only.

may include expense reimbursement, shuttle service or vehicle rental. See your Chevrolet dealer for details.

#### **Chevrolet Customer Communications Program**

As part of your Chevrolet experience, you will be receiving regular communications from Chevrolet, including a free subscription to the newsletter published exclusively for Chevrolet customers. But this is not just a one-way communication process. You'll be asked to express your opinions on many automotive-related subjects and you can be assured your responses will be heard. It's part of the Chevrolet way of letting customers know they are special.

# The Malibu

## Preferred Equipment Groups

*NOTE: These optional Preferred Equipment Groups (PEGs) are designed to help simplify the buying process. You may also select individual options for Standards & Options (not for availability). Some restrictions apply. Please see your salesperson for details.*

Preferred Equipment Group Number	Malibu 1-2	Malibu LS
Power Door Locks	■ ■	S
Power Windows with Driver's Express-Down Feature	■ ■	S
Power Outside Rearview Mirrors	■ ■	S
Mirrors, Inside Rearview with Dual Reading Lamps	■	S
Remote Keyless Entry System	■	S
Electronic Speed Control with Resume Speed	■	S

■ — Available. S — Standard.

## Standards & Options

*NOTE: Some individual available options listed below are included in the Preferred Equipment Group. Some restrictions may apply. Please see your salesperson for details.*

	Malibu	Malibu LS
<b>Exterior</b>		
Body-side moldings	S	S
Daytime Running Lamps with automatic exterior lamp control	S	S
Fog lamps	—	S
Headlamps: Reflector optic with flash-to-pass feature	S	S
Intermittent wiper system	S	S
Mirrors: dual, driver remote, passenger manual	S	—
Mirrors: dual, body color, electric remote	0*	S
Two-side galvanized steel (all body panels including roof)	S	S
<b>Interior</b>		
Air conditioning (with CFC-free refrigerant)	S	S
Auxiliary lighting (dome, reading, glove box and trunk)	S	S
Center console with covered storage compartment	S	S
Child security rear door locks	S	S
Delayed entry/exit lighting with theatre dimming	S	S
Electronic speed control with Resume Speed	0*	S
Floor mats, front and rear	0	S
Gauge package with tachometer and trip odometer	S	S
Luggage-area convenience net	0†	S
Low oil level warning light (with 3000 V6 only)	S	S
PassLock theft-deterrent system	S	S

Interior (continued)	Malibu	Malibu LS
Power door locks	0*	S
Power trunk opener	S	S
Power windows with driver's Express-Down feature	0*	S
Rear window defogger	0	S
Remote Keyless Entry system	0*	S
Scotchgard® Protector on cloth seats, door trim, floor carpeting, and floor mats	S	S
Seats: Cloth reclining bucket	S	—
Seats: Custom Cloth reclining bucket	0*	—
Seats: LS Custom Cloth bucket	—	S
Seats: Driver, 6-way power	—	S
Seats: Split-folding rear seat	0†	S
Summer® Electric (not available at start of production)	0	0
Tilt Wheel® Adjustable Steering Column	S	S
Tinted glass — all windows	S	S

\*Requires optional Preferred Equipment Group. †Included only with optional Custom Cloth seats.





## Buyer's Guide.

### Delco Electronics Sound Systems

NOTE: Malibu stereo sound systems include a Delco electronic turn/AM/FM stereo, extended range rear speakers and digital clock.

	Malibu	Malibu LS
Stereo: AM/FM	S	—
Stereo: AM/FM with cassette player, automatic tone control, TheftLock security feature and speed compensated volume	O	S
Stereo: AM/FM with compact disc player (replaces cassette), automatic tone control, TheftLock security feature and speed compensated volume	O	O
Stereo: AM/FM with compact disc player, remote cassette player, automatic tone control, TheftLock security feature and speed compensated volume	O	O

### Power Teams/Chassis

	Malibu	Malibu LS
Engine: 2.4 Liter Twin Cam with Sequential Fuel Injection	S	—
Engine: 3000 V6 Sequential Fuel Injection	O	S
Transmission: 4 speed electronic automatic with overdrive and second gear start capability	S	S
Brakes: 4 wheel anti lock system (ABS)	S	S
Brakes: Power front disc/rear drum	S	S
Power rack and pinion steering	S	S
Stainless-steel exhaust system	S	S
Suspension: 4 wheel independent	S	S

### Wheels/Tires

Wheels: ES with bolt on full wheel covers	S	—
Wheels: ES aluminum	O*	S
Tires: P235/60R15 Blackwall Touring	S	S

S — Standard, O — Optional, \*Requires optional Preferred Equipment Group



Malibu LS Sedan in Stock

## Data

Exterior Dimensions (in.)	
Wheelbase	107.0
Length (overall)	190.4
Width (overall)	69.4
Height (overall)	56.4

Interior Dimensions (in.)	
Headroom — front	39.4
Headroom — rear	37.6
Legroom — front	41.9
Legroom — rear	38.0
Shoulder room — front	55.5
Shoulder room — rear	55.3
Hip room — front	52.0
Hip room — rear	52.0

Capacities	
Passenger capacity	5
Luggage capacity (cu. ft.)	16.0
Fuel tank capacity (gal.)	15.0

Trailer <sup>1</sup>	
Trailer classification	Light
Gross trailer weight (lbs. up to) (3000 V6 only)	1000
Maximum tongue load (lbs.)	100

*N.B.E. The chains should not be used on Malibu equipped with 1954WB 15 tires because they could cause damage to these tires.*

**Turn Plastic Into Steel With The GM Card.** The GM MasterCard<sup>®</sup> with no annual fee, is the revolutionary financial vehicle specifically designed to help put you behind the wheel. When you use your GM Card, you'll receive 5% GM Card Earnings on purchases good toward



the purchase or lease of a new GM car or truck. It could mean saving hundreds, even thousands of dollars over and above any other discounts or rebates. Call 1-800-

**SMARTLEASE BY GMAC** makes it easy to enjoy the performance, quality and style of a brand new Chevy Malibu. With SmartLease, qualified customers can be approved in about one hour, and you'll enjoy low SmartLease monthly



payments. Plus SmartLease offers you choices at the end of your lease. You can either buy your Malibu at a price guaranteed up front, or return your vehicle with no other obligations — providing the terms of the lease have been met. For more information about SmartLease, or any of the other quality GMAC financing options, see your Chevrolet dealer or call 1-800-43-SMART.

## Safety Features

### Occupant Protection

- Supplemental inflatable-restraint manual lap/shoulder safety belts and air bags driver/right-front passenger
- Manual lap/shoulder safety belts onboard rear seat positions
- Manual lap safety belts, center seat positions
- Adjustable front seat shoulder safety belt guide loops
- Energy absorbing instrument panel
- Interlocking door latches
- Safety armrests
- Breakaway inside rearview mirror
- Security door locks and door retention components
- Laminated windshield glass, urethane bonded
- Head restraints, front, adjustable
- Side door beams
- Discenger-guard inside door-lock handles
- Safety belt use reminder system
- Front and rear crush zones
- Tempered safety glass side and rear windows
- Dual sunvisors
- Pressure lock radiator cap
- Rear seat safety belt child comfort guides
- Child security rear door locks

### Crash Avoidance

- Side-marker lamps and reflectors
- Parking lamps
- Four-way hazard warning flashers
- Backup lamps
- Directional signal control
- Windshield defrosters, washers and multi speed wipers
- Inside day/night rearview mirror
- Outside rearview mirrors
- Brake system with dual master cylinder plus warning light
- Center high mounted stoplamp
- Starter safety switch
- Dual action hood latch
- Low-glare finish inside windshield moldings, wiper arms and blades
- metallic steering wheel surfaces
- Illuminated heater and defroster controls
- Tires with built-in tread wear indicators
- Brake/transmission shift interlock
- Four wheel anti-lock brake system (ABS)
- Daytime Running Lamps with automatic exterior light control

### Theft Deterrence

- Visible vehicle identification number
- Laser etched VIN plate
- Marked body parts
- Theft lock theft deterrent system
- Theft deterrent steering column lock
- Theft deterrent key locking system
- Ignition key removal audible reminder
- Remote inside hood release



A note about air bags: Always wear safety belts even with air bags.

## A Word About ...

### Customer Assistance

The Chevrolet Customer Assistance Center (CAC) has a special toll free number (1-800-222-1020). It puts you in contact with Chevrolet experts who can handle any product service question or problem you may have.

### GM Protection Plan

The available GM Protection Plan offers service protection in addition to that provided by GM's New Vehicle Limited Warranty. Ask your dealer about it. Coverage available only in the U.S. and Canada.

### Engines

Chevrolts are equipped with engines produced by different operating units of GM, its subsidiaries or suppliers to GM worldwide.

### Corrosion Protection

Chevrolts are designed and built to resist corrosion. All body sheet metal components are warranted against rust through corrosion for 6 years or 100,000 miles, whichever comes first. Application of additional rust-inhibiting materials is not required under the corrosion coverage and none is recommended.

### Assembly

Chevrolts are assembled by different operating units of General Motors, its subsidiaries or suppliers to GM worldwide. Chevrolts incorporate thousands of components produced by different operating units of GM, its subsidiaries or suppliers to GM worldwide. We sometimes find it necessary to produce Chevrolts with different or differently sourced components than originally scheduled. All such components have been approved for use in Chevrolts and will provide the quality performance associated with the Chevrolet name. Since some options may be unavailable when your vehicle is assembled, we suggest that you verify that your vehicle includes the equipment you ordered or, if there are changes, that they are acceptable to you.

### Updated Service Information

Chevrolet regularly sends its dealers useful service bulletins about Chevrolet products. Chevrolet monitors product performance in the field. We then prepare bulletins for servicing our vehicles better. Now you can get these bulletins too. Ask your dealer for ordering information, call toll free 1-800-531-4122.

### Product Information

For additional information on any 1997 Chevy Car, Truck or Geo product, call 1-800-950-2626 or visit us at our website address <http://www.chevrolet.com>

### Important: A Word About This Catalog

We have tried to make this catalog as comprehensive and factual as possible. We reserve the right, however, to make changes at any time without notice, in prices, colors, materials, equipment, specifications, models and availability. Since some information may have been updated since the time of printing, please check with your Chevrolet dealer for complete details.

General Motors, GM, the GM Emblem, Chevrolet, the Chevrolet Emblem, TRB Malibu, The Link and Sider Tower are registered trademarks and Buick, Oldsmobile and Chevy are trademarks of the General Motors Corporation. Buckle Up is a registered trademark of GM. GMAC and SmartLease are registered trademarks of the General Motors Acceptance Corporation. ©1996 General Motors Corporation. All rights reserved.



*Malibu Sedan in Dark Curious Red Metallic with optional aluminum wheels.*

## Colors And Trim.

Malibu offers you beautiful color and trim choices that reflect your desire for contemporary style and quiet elegance.

There are nine exterior colors to choose from. All are lustrous basecoat/clearcoat, for a durable, long-lasting shine.

You can select from three distinct cloth interiors (standard Malibu, optional Malibu Custom Cloth, and Malibu LS Custom Cloth).



Medium Opal Blue Metallic



Black



Bright White



Dark Carmine Red Metallic

### *Exterior Colors*

Black
Medium Opal Blue Metallic
Dark Cherry Metallic
Dark Jade Green Metallic
Sandrift Metallic
Medium Malachite Metallic
Silvermist Metallic
Dark Carmine Red Metallic
Bright White

Light Gray

### *Malibu Cloth Trim*

Medium Gray

Medium Neutral

Light Gray

### *Optional Malibu Custom Cloth Trim*

Medium Gray

Medium Neutral







Genuine Chevrolet  
*The Cars More Americans Trust.*

