

 **TOYOTA Tacoma/T100 97**



Go 4x4.



Tacoma / T100 97

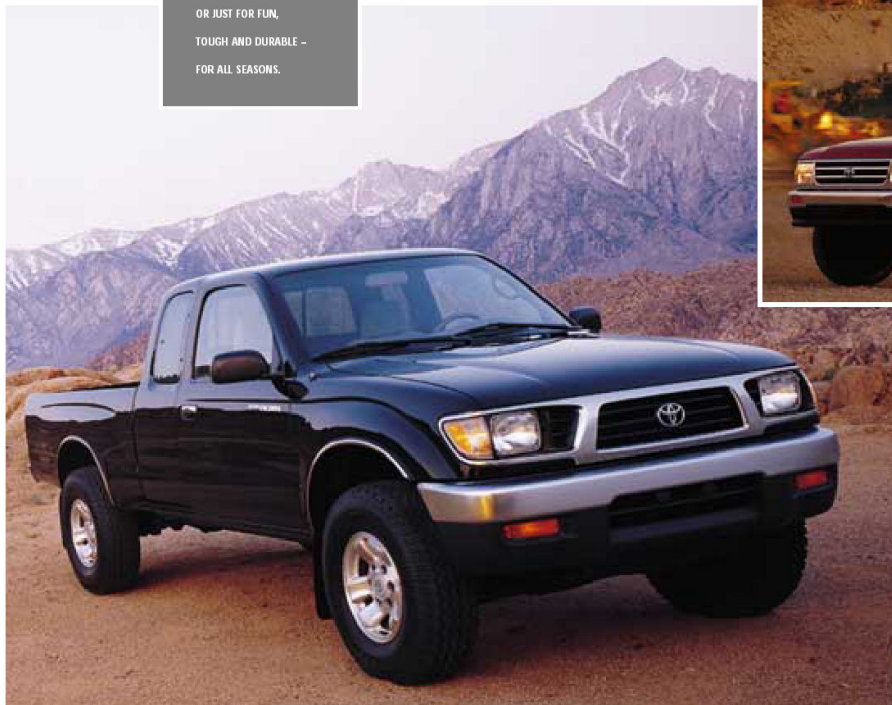
Toyota Tacoma and T100 are a reflection of the superior quality and value found in all Toyota products, as well as the ongoing Toyota philosophy of total customer satisfaction... and they have the quality Awards to prove it – from customers and experts alike:

A major part of our annual Research & Development budget is directed into design and engineering safety features. For example, we control-crash over 600 vehicles annually; run every engine to assure its reliability; conduct simulated and actual high speed track tests of braking to stress components.

We are absolutely committed to the principle of constant improvement... and we strive not simply to meet your expectations but to exceed them.

Our objective: how to make your driving experience better, easier, more convenient, more fun. Read through this brochure; ask someone who owns a Tacoma or a T100; better still, take one for a test drive. And discover for yourself what Toyota quality really means.

TOYOTA TRUCKS – FOR
AROUND TOWN OR IN
THE COUNTRY, ON ROAD
OR OFF ROAD, ON SITE
OR JUST FOR FUN,
TOUGH AND DURABLE –
FOR ALL SEASONS.



4x4 Tacoma Xtracab SR5 V6 shown in Black Metallic with optional equipment

TACOMA / T100 97



4x4 T100 Xtracab SR5 shown in Ruby Red with optional equipment

CAA[®] PYRAMID AWARD

VOTED BEST FOR OWNER
SATISFACTION, RELIABILITY
AND LOW REPAIR FREQUENCY
AND COST, TOYOTAS HAVE
EARNED THIS AWARD
9 TIMES IN THE LAST 14 YEARS.
THAT'S MORE OFTEN THAN
ANY OTHER MANUFACTURER –
REGARDLESS OF PRICE CLASS.
TACOMA '97 & T100 '97 ARE
DESIGNED TO CONTINUE
THE TRADITION.

CAA'S "AUTOPINION '96 ANNUAL"

INCLUDES TOYOTA AMONG
THE LEAST EXPENSIVE
VEHICLES TO REPAIR AND
MAINTAIN OVER A FIVE YEAR
PERIOD, THROUGH MODEL
YEARS 1991, 92, 93, 94, AND 95.
TACOMA '97 & T100 '97 ARE
THE EVOLUTION OF THAT
OUTSTANDING RECORD.

Tercel Paseo Corolla Camry Avalon Celica Supra Turbo **TACOMA T100** RAV4 4Runner Previa

Go44it.

2



3

[®] Registered Trade Mark of the Canadian Automobile Association
1996 Model Year figures not available at printing. Information
derived from the 1995 CAA Vehicle Durability Survey.



DESIGNED EXCLUSIVELY TO ANSWER
THE WORKING AND PERSONAL
RECREATION NEEDS OF NORTH AMERICA,
TACOMA FEATURES IMPRESSIVE POWER-
PLANTS WITH HIGH PERFORMANCE,
EXCEPTIONAL TORQUE AND FUEL
ECONOMY. CHOOSE FROM A 142 HP,
2.4 LITRE 4-CYLINDER (4X2 MODELS),
A 150 HP, 2.7 LITRE 4-CYLINDER
OR 190 HP, 3.4 LITRE V6 (4X4 MODELS).



TACOMA 97

Tacoma 4x4/4x2

Tacoma 4x4, for year-round fun and recreation! The new standard of performance, styling with a spacious and comfortable interior for your number one choice. Shift on the fly 4WD is simple with the touch of a button* or lever located on the transfer case. A smooth and stable ride on or off-road is assured by a fully independent double wishbone front suspension with coil springs and gas shock absorbers combined with rear multi-leaf springs and bias mounted gas shock absorbers. Choose your Tacoma in Regular Cab or Xtracab models, all with sporty exterior styling and car-like comforts. Toyota's A.D.D. (Automatic Disconnecting Differential) system provides economical 2WD or on-demand 4WD with no hubs to lock. A 4-wheel A.B.S. (Antilock Braking System) which operates in 2 or 4-wheel drive is available on selected models and standard on 4x4 Xtracab SR5 V6. Standard features on all Tacomas include a driver airbag Supplemental Restraint System (SRS), adjustable 'B' Pillar shoulder belt anchors, outboard 3-point lap and shoulder belts and halogen headlamps. 4x2 Tacomas (available in regular or Xtracab) feature a long list of standard equipment in a sporty package, styled and engineered uniquely for your needs. A powerful 142 hp, 16-valve 4-cylinder engine delivers the ideal combination of performance with fuel economy.

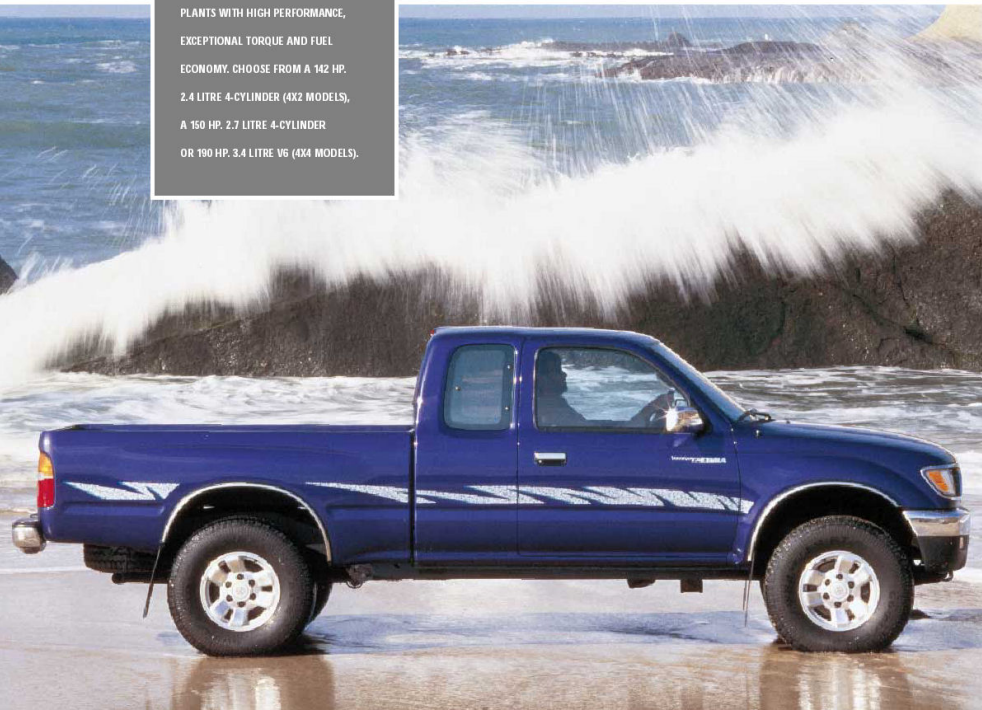
*Xtracab SR5 V6 models only.



(Above) 4x2 Xtracab shown in Ruby Red with optional equipment



(Above and below) 4x4 Xtracab SR5 V6 shown with optional equipment



4x4 Xtracab SR5 V6 shown in Cobalt Blue Pearl with optional equipment & owner added striping

Tercel Paseo Corolla Camry Avalon Celica Supra Turbo TACOMA T100 RAV4 4Runner Previa

Go 4x4 it.

4

5



1997 4x4 Toyota Tacoma Features & Specifications

THE FOLLOWING EQUIPMENT IS COMMON TO ALL 4X4 TACOMA MODELS				
BUMPERS: Rear Step	HEADLAMPS: Halogen	MECHANICAL FEATURES: Fuel tank & transfer case skid plates.	STEERING: Power/Variable Assist, Rack & Pinion.	
CONVENIENCE ITEMS: Digital Clock, Cup Holders, Cigarette Lighter, Fuel Cap Langer.	INSTRUMENTATION: Water Temperature Gauge, 4WD Indicator.	SAFETY: Driver Airbag Supplemental Restraint System (SRS), Adjustable "T" Pillar Shoulder Belt Anchors, Adult Seats, Outboard 3 Point Lap & Shoulder Belts, Front Door Hook.	TRANSMISSION: 5-Speed Manual, Overdrive.	
EXTERIOR FEATURES: Front & Rear Splash Guards, Highmount Shopping.	INTERIOR TRIM: SemiFabric, Door Trim, Door Map Pockets, Dent Footrest.	SECURITY: Fuel Door Lock.	TRUCK BED: Double Wall, 4 Cargo Tie-downs.	
EXTERNAL MIRRORS: Dual, Foldable.	INTERNAL MIRRORS: Passenger Vanity Mirror, Day/Night Rear View Mirror.		WARNINGS: Headlamp On, Low Washer Fluid, Windshield, Side Window Detectors, Tinted Glass, Windshield Shade Band.	
FLOOR MATERIALS: Car-Pile Carpeting.				
REGULAR CAB ADDS				
ENGINE: 2.7 Ltr., 150 HP, Sequential Multi-Point Electronic Fuel Injection, 16-Valve, DOHC.	4-Cylinder: Stainless Steel Exhaust System.	SEAT MATERIAL: Cloth.	WIPERS: 2-Speed, Mist Feature.	
	FRONT SEAT TYPE: Bench.	WHEELS: Silver Painted Spoke Wheels.		
XTRACAB ADDS				
AUDIO: Radio Prep Kit including Front & Rear Speakers, Antenna.	ENGINE: 2.7 Ltr., 150 HP Sequential Multi-Point Electronic Fuel Injection, 16-Valve, DOHC, 4-Cylinder, Stainless Steel Exhaust System.	HEADREST/VERTICAL: Rear Walk-In Assist.	STORAGE: Under Rear Seat Compartment.	
DRIVER SEAT ADJUSTMENTS: Recline, Headrest-Vertical, Foldable Armrest.	FRONT SEAT TYPE: 60/40 Split Bench.	REAR SEAT ADJUSTMENTS: Foldable Cushions, Jump Seats.	WHEELS: Silver Painted Spoke Wheels.	
	PASSENGER SEAT ADJUSTMENTS: Recline.	SAFETY: Anchor Point for Child Restraint Seat.	WIPERS: 2-Speed, Mist Feature.	
XTRACAB V6 ADDS				
AUDIO: Radio Prep Kit including Front & Rear Speakers, Antenna.	Point Electronic Fuel Injection, 24-Valve, DOHC, V6, Stainless Steel Exhaust System, Engine Oil Cooler.	PASSENGER SEAT ADJUSTMENTS: Recline, Headrest-Vertical, Rear Walk-In Assist.	SEAT MATERIAL: Cloth.	
DRIVER SEAT ADJUSTMENTS: Recline, Headrest-Vertical, Foldable Armrest.	FRONT SEAT TYPE: 60/40 Split Bench.	REAR SEAT ADJUSTMENTS: Foldable Cushions, Jump Seats.	WHEELS: Silver Painted Spoke Wheels.	
ENGINE: 3.4 Ltr., 190 HP, Sequential Multi-Point Electronic Fuel Injection, 24-Valve, DOHC, V6, Stainless Steel Exhaust System, Engine Oil Cooler.	INSTRUMENTATION: Tachometer, Trip Odometer.	SAFETY: Anchor Point for Child Restraint Seat.	WIPERS: 2-Speed, Mist Feature.	
XTRACAB SRS V6 ADDS				
AUDIO: AM/FM Stereo, Cassette, 4 Speakers.	ENGINE: 3.4 Ltr., 190 HP, Sequential Multi-Point Electronic Fuel Injection, 24-Valve, DOHC, V6, Stainless Steel Exhaust System, Engine Oil Cooler.	PASSENGER SEAT ADJUSTMENTS: Recline, Headrest-Vertical, Rear Walk-In Assist.	WARNINGS: Low Fuel Warning Light.	
BRAKES: 4-Wheel A.B.S. (Antilock Braking System).	FRONT SEAT TYPE: Sport Seats.	SEAT MATERIAL: Premium Cloth.	WHEELS: (4) Aluminum Alloy, Wheel Lock Package.	
CHROME FINISH: Bumpers, Grille, Door Handles.	INSTRUMENTATION: Tachometer, Trip Odometer.	STEERING WHEEL: Tilt.	WINDOWS: Privacy Glass on Rear Window & Swing-Out Qtr. Windows, Rear Side Window.	
CONVENIENCE ITEMS: Cruise Control.	INTERIOR LAMPS: Glove Box, Ignition Key, Map, Redline, Cushion Height, Headrest-Vertical.	STORAGE: Front & Centre Console Box, Under Rear Seat Compartment.	WIPERS: Variable Intermittent.	
DRIVER SEAT ADJUSTMENTS: Lumbar Support, Redline, Cushion Height, Headrest-Vertical.	MECHANICAL FEATURES: One touch 4WD.			
FACTORY OPTIONS				
4-Speed Overdrive Automatic	REGULAR CAB	XTRACAB	XTRACAB V6	XTRACAB SRS V6
PACKAGES AVAILABLE				
REGULAR CAB/XTRACAB Package #1: Tilt Steering Wheel, Variable Intermittent Wipers, Privacy Glass on Rear Window (8 Qtr. Windows on Xtracab), Rear Side Window, Tachometer, Trip Odometer.	o	o	o	o
REGULAR CAB Package #2: Chrome: Front & Rear Bumpers, Grille & Door Handles, 4-Wheel A.B.S.1 (Antilock Braking System), (4) 6-Spoke Aluminum Alloy Wheels, Tilt Steering Wheel, Variable Intermittent Wipers, Cruise Control, Privacy Glass on Rear Window, Rear Side Window, Tachometer, Trip Odometer.	o			
XTRACAB Package #2: Chrome: Front & Rear Bumpers, Grille & Door Handles, 4-Wheel A.B.S.1 (Antilock Braking System), (4) 6-Spoke Aluminum Alloy Wheels, Pop-Up Moonroof with Removable Sunshade, Tilt Steering Wheel, Variable Intermittent Wipers, Cruise Control, Privacy Glass on Rear & Qtr. Windows, Rear Side Window, Tachometer, Trip Odometer.		o		
XTRACAB V6 Package #1: Tilt Steering Wheel, Variable Intermittent Wipers, Privacy Glass on Rear & Qtr. Windows, Rear Side Window.			o	
XTRACAB V6 Package #2: Chrome: Front & Rear Bumpers, Wheelarch Mouldings, Grille & Door Handles, (5) 31x10.5R15 Tires, (4) 6-Spoke Aluminum Alloy Wheels, Tilt Steering Wheel, Variable Intermittent Wipers, Privacy Glass on Rear & Qtr. Windows, Rear Side Window.			o	
XTRACAB V6 Package #3 Includes: XTRACAB V6 Package #2 Plus Power Windows & Door Locks, Cruise Control, 4-Wheel A.B.S.1 (Antilock Braking System), Pop-Up Moonroof with Removable Sunshade.			o	
XTRACAB V6 Value Package: Tilt Steering Wheel, Variable Intermittent Wipers, Privacy Glass on Rear & Qtr. Windows, Rear Side Window, Chrome: Front & Rear Bumpers, Wheelarch Mouldings, Grille & Door Handles, (5) 31x10.5R15 Tires, (4) 6-Spoke Aluminum Alloy Wheels, Air Conditioning, AM/FM Cassette, Carpet Mats.			o	
XTRACAB SRS V6 Package #1 Includes: (5) 31x10.5R15 Tires, Pop-Up Moonroof with Removable Sunshade, Chrome Wheelarch Mouldings.			o	
XTRACAB SRS V6 Package #2 Includes: Power: Windows, Door Locks, Antenna & (Chrome) Mirrors, (5) 31x10.5R15 Tires, Pop-Up Moonroof with Removable Sunshade, Chrome Wheelarch Mouldings.			o	
DEALER OPTIONS				
2-Speaker AM/FM Stereo, AM/FM Cassette	o	o	o	o
Air Conditioning, Protective Floor Mats, Compact Disc Player/Autochanger	o	o	o	o
Block Heater, Front End Mask, Grille/Brush Guard	o	o	o	o
Jeepwear Cover, Trailer Hitch, Running Boards, Protective Bed Liner	o	o	o	o

o - Optional *See Airbag Notice

Operates in 2WD or 4WD Mode For 4-Door Color References and Aging Notice See 4x2 Features and Specifications

1997 4x4 Toyota Tacoma Features & Specifications

MECHANICAL		REGULAR CAB	XTRACAB	XTRACAB V6	XTRACAB SRS V6
Engine SR2-FE SVZ-FE	2.7 Ltr. (269Kcs), 4-Cylinder, DOHC, 16-Valve, Balance Shafts, Sequential Multi-Point Electronic Fuel Injection 3.4 Ltr. (337Kcs), V6, DOHC, 24-Valve, Sequential Multi-Point Electronic Fuel Injection	•	•	•	•
Compression Ratio	9.5:1 9.6:1	•	•	•	•
Horsepower (kW)	150 (112) @ 4800 rpm 190 (142) @ 4800 rpm	•	•	•	•
Torque (N.m)	177 lb. ft. (240) @ 4000 rpm 220 lb. ft. (298) @ 3600 rpm	•	•	•	•
Suspension	Front: Independent, Double Wishbone, Coil Springs, Stabilizer Bar, Gas Shock Absorbers Rear: Multi-Leaf Springs & Ribs Mounted Gas Shock Absorbers	•	•	•	•
Drivetrain	Front Engine/Part Time 4WD with A.D.B. (Automatic Disconnecting Differential)	•	•	•	•
Transmission	5-Speed Overdrive Manual (*One Touch 2WD - 4WD) 4-Speed Overdrive Automatic with Lock-Up Torque Converter (*One Touch 2WD - 4WD)	•	•	•	•
Transfer Case (2-Speed)	H2WD & H4WD 1.000:1 4WD 2.566:1	•	•	•	•
Brakes	Power-Assisted Ventilated Front Discs/Rear Drums with Load-Sensing Brake Proportioning & ByPass Valve 4-Wheel A.B.S.™ (Antilock Braking System)	•	•	•	•
Steering	Rack & Pinion with Variable Power Assist	•	•	•	•
Tires*	(5) Mud & Snow Radials P225/75R15, Full-Size Spare (5) 31x10.5R15, Full-Size Spare	•	•	•	•
DIMENSIONS mm (in.)					
Length	4585 (180.5)	Xtracab 5055 (199.0)			
Width	1600 (66.5)	Xtracab SRS V6 1720 (67.7)			
Height (Unloaded)	1710 (67.3)	Xtracab 1700 (66.9)			
Bed Length	1892 (74.5)				
Wheelbase	2625 (103.3)	Xtracab 3095 (121.8)			
Tread	Front: 1460 (57.5) Rear: 1455 (57.3)	Xtracab SRS V6 Front: 1500 (59.0) Rear: 1495 (58.8)			
Ground Clearance	(Minimum Running) 275 (10.8) w/31x10.5 Tires 305 (12.0)				
Headroom	971 (38.2)	Xtracab: Front: 975 (38.4) Rear: 902 (35.5)			
Legroom	1059 (41.7)	Xtracab: Front: 1088 (42.8) Rear: 680 (27.2)			
Shoulder Room	1375 (54.1)	Xtracab: Front: 1375 (54.1) Rear: 1355 (53.3)			
Seating Capacity	Regular Cab: 3 Xtracab: Front: 3 Rear: 2 Xtracab SRS V6: Front: 2 Rear: 2				
GROSS VEHICLE WEIGHT kg (lbs.)					
	2315 (5104)	•	•	•	•
TOWING CAPACITY kg (lbs.)					
	4-cylinder 1587 (3500) V6 2268 (5000)	•	•	•	•
PAYLOAD** kg (lbs.)					
	889 (1974) 799 (1759)	•	•	•	•
Manual/Automatic	769 (1694)/755 (1664)			•/o	
Manual/Automatic	771 (1698)/757 (1669)			•/o	
CURB WEIGHT kg (lbs.)					
	1447 (3190) 1517 (3346)	•	•	•	•
Manual/Automatic	1547 (3410)/1560 (3440)			•/o	
Manual/Automatic	1544 (3405)/1558 (3435)			•/o	
FUEL CAPACITY litres (gal.)					
	68 (15)	•	•	•	•
FUEL CONSUMPTION RATING l / 100 km MPG					
City/Highway	4-Cylinder	12.9/9.9	27/29	•	•
	V6 Manual	14.4/11.3	20/25	•	•
	V6 Automatic	14.4/11.6	20/24	•	•

o - Optional • Standard *Toyota Tacoma uses tires supplied by Dunlop, Goodyear & Firestone **Payload - Passengers, Equipment, Luggage & Cargo ††Operates in 2WD or 4WD Mode

Go4x4!



1997 4x2 Toyota Tacoma Features & Specifications

Toyota Credit



Take advantage of Toyota Credit Lease and Finance Plans. All arrangements can easily be made at your participating Toyota Dealership! Simply ask your salesperson about the complete convenience of Toyota Credit.

We've Got You Covered!



With Extra Care Protection, your new Toyota has inflation protected coverage from mechanical failure, road emergencies, and much more. It is the affordable and cost-effective way to guarantee your peace of mind and to protect your investment whether you buy or lease. EOP is not a warranty... it's much more! It can provide you and your new Toyota with coverage such as towing, Emergency Road Service, Rental Assistance, and Tire Road Hazard Protection. It can take over with Mechanical Protection when your Toyota factory warranty ends. Please consult with your Toyota Dealer about this valuable option, because with EOP, "we've got you covered!"

THE FOLLOWING EQUIPMENT IS COMMON TO ALL 4X2 TACOMA MODELS

CONVENIENCE ITEMS: Digital Clock Cup Holders, Cigarette Lighter, Fuel Cap Hanger ENGINE: 2.4 Liter, 142 HP Multi-Point Electronic Fuel Injection, 16-Valve, DOHC, 4-Cylinder Stainless Steel Exhaust System EXTERIOR FEATURES: Front & Rear Splash Guards, High-mount Stoplamp EXTERNAL MIRRORS: Foldable, Dual	FLOOR MATERIALS: Cut-Pile Carpeting HEADLAMPS: Aero Style, Halogen INSTRUMENTATION: Water Temperature Gauge INTERIOR TRIM: Semi-Fabric Door Trim, Door Map Pockets, Driver Footrest INTERNAL MIRRORS: Passenger Vanity Mirror, Day/Night Rear View Mirror	SAFETY: Driver Airbag Supplemental Restraint System (SRS), Adjustable "B" Pillar Shoulder Belt Anchors, Assist Grip, Outboard 3 Point Lap & Shoulder Belts STEERING: Power Door Lock TIRES: Radials, All-Season, Full Size Spare TRANSMISSION: 5-Speed, Manual, Overdrive	TRUCK BED: Double-Width, 4 Cargo Tie-Downs WARNINGS: Headlamp On, Low Washer Fluid WHEELS: Full Wheel Covers WINDOWS: Side-Window Defoggers, Tinted Glass, Windshield Shade Band WIPERS: 2-Speed, Mist Feature
------------------------------------------------------------------------------------------------------------------------------------------------------------------------------------------------------------------------------------------------------------------------------------------------------------------------------------------------------------	----------------------------------------------------------------------------------------------------------------------------------------------------------------------------------------------------------------------------------------------------------------------------------------------------------	----------------------------------------------------------------------------------------------------------------------------------------------------------------------------------------------------------------------------------------------------------------------------------------------------------------	---------------------------------------------------------------------------------------------------------------------------------------------------------------------------------------------------------------------------------------------------------------

REGULAR CAB ADDS

FRONT SEAT TYPE: Bench	SEAT MATERIAL: Cloth	TIRES: P195/75R14
-------------------------------	-----------------------------	--------------------------

XTRACAB ADDS

AUDIO: Radio Prep Kit including front & Rear Speakers, Antenna DRIVER SEAT ADJUSTMENTS: Recline, Headrest-Vertical, Foldable Armrest FRONT SEAT TYPE: 60/40 Split Bench PASSENGER SEAT ADJUSTMENTS: Recline, Headrest-Vertical, Rear Walk-In Assist REAR SEAT ADJUSTMENTS: Foldable Cushions	REAR SEAT TYPE: Jump Seats SAFETY: Anchor Point for Child Restraint Seat SEAT MATERIAL: Cloth STORAGE: Under Rear Seat Compartment	TIRES: P215/70R14 WINDOWS: Swing-Out (On Windows)
---------------------------------------------------------------------------------------------------------------------------------------------------------------------------------------------------------------------------------------------------------------------------------------------------------------------------------------------	-------------------------------------------------------------------------------------------------------------------------------------------------------------------------	--------------------------------------------------------------------

FACTORY OPTIONS

	REGULAR CAB	XTRACAB
Column Shift, 4-Speed Overdrive Automatic	○	○
PACKAGES AVAILABLE		
REGULAR CAB Package 1: IH Steering Wheel, Variable Intermittent Wipers, Privacy Glass on Rear Window, Rear Sliding Window, Lockmaster, Trip Odometer, Rear Step Bumper Chrome, Front & Rear Bumpers, Grille & Door Handles	○	
XTRACAB Package #1: IH Steering Wheel, Variable Intermittent Wipers, Privacy Glass on Rear Window & (On Windows, Rear Sliding Window, Lockmaster, Trip Odometer, Rear Step Bumper		○
XTRACAB Package #2: Chrome, Front & Rear Bumpers, Grille & Door Handles, 4-Wheel A.B.S. (Anti-Lock Braking System), (4) 5-Spoke Aluminum Alloy Wheels, Pop-Up Moonroof with Removable Sunshade, IH Steering Wheel, Cruise Control, Variable Intermittent Wipers, Privacy Glass on Rear & (On Windows, Rear Sliding Window, Lockmaster, Trip Odometer, Rear Step Bumper		○

DEALER OPTIONS

2-Speaker AM/FM Stereo, Black Heater, Front End Mask	○	○
Air Conditioning, Protective Floor Mats	○	○
Rear Step Bumper, Protective Bed Liner, Tonneau Cover, Trailer Hitch	○	○
AM/FM Cassette, Compact Disc Player/Autochanger	○	○

4x2 & 4x4 COLOURS (Clear coat on all metallic/mica paint)

Exterior	Interior - Cloth	402	402	404	404
		REGULAR CAB	XTRACAB	XTRACAB V6	XTRACAB SR5 V6
045 Iced White	Grey	●	●	●	●
204 Black Metallic	Grey	●	●	●	●
3H7 Ruby Red	Grey	●	●	●	●
751 Dark Teal Green Mica	Ok	●	●	●	●
754 Paradise Blue Mica	Grey	●	●	●	●
886 Caball Blue Pearl	Grey	●	●	●	●
926 Silversteel Mica	Grey	●	●	●	●

○ - Optional ● - Standard *See Airbag Notice

1997 4x2 Toyota Tacoma Features & Specifications

MECHANICAL

	REGULAR CAB	XTRACAB
Engine 2RZ-FE	2.4 Liter (2430cc), 4-Cylinder, DOHC, 16-Valve, Multi-Point Electronic Fuel Injection	●
Compression Ratio	9.5:1	●
Horsepower (kW)	142 (106) @ 5000 rpm	●
Torque (ft-lb)	160 ft. lb. (217) @ 4000 rpm	●
Suspension	Front: Independent, Double- wishbone, Coil Springs, Stabilizer Bar, Hydraulic Shock Absorbers Rear: Multi-Leaf Springs, 8-Ribs Mounted Hydraulic Shock Absorbers	●
Drivetrain	Front Engine/Rear-Wheel Drive	●
Transmission	5-Speed Overdrive Manual 4-Speed Column Shift Overdrive Automatic with Lock-Up Torque Converter	○
Brakes	Power-Assisted Ventilated Front Discs/Rear Drums with Load-Sensing Brake Proportioning & By-Pass Valve 4-Wheel A.B.S. (Anti-Lock Braking System)	●
Steering	Rack & Pinion with Variable Power Assist	●
Tires*	(5) All-Season Radials: P195/75R14, Full-Size Spare (5) All-Season Radials: P215/70R14, Full-Size Spare	●

DIMENSIONS mm (in.)

Length	4410 (174.0)	Xtracab 4910 (193.3)
Width	1600 (66.5)	
Height (Unloaded)	1570 (61.8)	Xtracab 1575 (62.0)
Bed Length	1892 (74.5)	
Wheelbase	2625 (103.3)	Xtracab 3095 (121.8)
Tread	Front: 1305 (51.4) Rear: 1415 (55.7)	Xtracab Front: 1425 (56.1) Rear: 1440 (56.7)
Ground Clearance	(Minimum Running) 160 (6.3)	Xtracab 165 (6.5)
Headroom	971 (38.2)	Xtracab Front: 975 (38.4) Rear: 902 (35.5)
Legroom	1059 (41.7)	Xtracab Front: 1088 (42.8) Rear: 680 (27.2)
Shoulder Room	1375 (54.1)	Xtracab Front: 1375 (54.1) Rear: 1355 (53.3)
Seating Capacity	Regular Cab: 3 Xtracab Front: 3 Rear: 2	

GROSS VEHICLE WEIGHT kg (lbs.)

	1925 (4244)	●
	2040 (4497)	●

TOWING CAPACITY kg (lbs.)

	1587 (3500)	●
--	-------------	---

PAYLOAD** kg (lbs.) Manual/Automatic

	764 (1684)/755 (1664)	●
	795 (1752)/786 (1732)	●

CURB WEIGHT kg (lbs.) Manual/Automatic

	1161 (2560)/1170 (2580)	●
	1245 (2745)/1254 (2765)	●

FUEL CAPACITY litres (gal.)

	57 (12.5)	●
--	-----------	---

FUEL CONSUMPTION RATING l / 100 km MPG

City/Highway	Manual	10.6/7.6	21/37	●
	Automatic	11.1/8.7	25/32	○

○ - Optional ● - Standard *Toyota Tacoma uses tires supplied by Dunlop, Goodyear & Firestone **Payload = Passengers, Equipment, Luggage & Cargo

AIRBAG NOTICE: The 1997 Toyota Tacoma features a driver airbag Supplemental Restraint System (SRS) which activates only in a front-end collision of sufficient magnitude to inflate the bag. In moderate frontal collisions, the airbag may not inflate, in a rear or side collision the airbag is designed not to inflate, so the primary protection is provided by the lap and shoulder belt system. Seat belts must be worn at all times by all occupants.

TOYOTA CANADA INC. Specifications and equipment are based on information available at time of printing and are subject to change without notice. In some cases, features, although shown as, or stated to be standard equipment, may nonetheless be optional or not available. For details on options, accessories and specifications, contact your Toyota Dealer.

Canadian vehicles equipped with daytime running lights.

Toyota... "We Care"

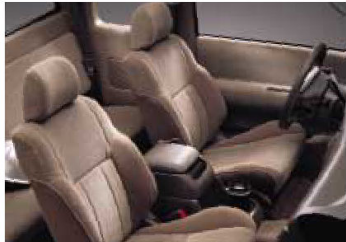
Toyota... "We Care" is our promise to make your every experience with Toyota unparaleled. Your satisfaction before and after purchase is our goal. Simply contact your Dealer's Customer Relations Manager with any questions you may have. Should further assistance be required, please call Toyota Canada's Customer Assistance Centre: toll-free from anywhere in Canada: 1-800-263-7640.



T100'S STANDARD SAFETY FEATURES
INCLUDE A DRIVER AIRBAG SUPPLEMENTAL
RESTRAINT SYSTEM (SRS), SIDE IMPACT
PROTECTION AND HIGHMOUNT STOPLAMP.



4x4 Xtracab SR5 shown in Sierra Green Mica with optional equipment



4x4 Xtracab SR5 shown with optional equipment



Optional equipment shown

T100 97

T100 4x4/4x2

The 4x4 T100 Xtracab & Xtracab SR5 combines the power and cargo capacity of a full-size truck with the styling, ease of handling and economy of a compact. The powerful and fuel efficient 190 hp, 3.4 Litre 24-valve V6 is available with a rugged 5-speed overdrive manual transmission or optional column-shift 4-speed automatic. Optional 4-wheel A.B.S. (Antilock Braking System) is an all-weather feature that operates in 2 or 4-wheel drive. Around town economy in 2WD or on demand 4WD is available at the touch of a lever thanks to Toyota's A.D.D. (Automatic Disconnecting Differential) system. The 3-passenger 60/40 reclining split bench on Xtracab has a fold-down armrest and adjustable headrests, with sport seats & centre console/armrest on Xtracab SR5. The convenient passenger-side walk-in provides easy access to the comfortable rear seating for three with practical fold-down jump seats, assist grips and swing-open quarter windows for ventilation. Adjustable 'B' Pillar shoulder belt anchors, outboard 3-point lap and shoulder belts, and 2-point lap belts for the rear and centre seating positions ensure occupant comfort. The large instrument panel is highly functional, with all controls logically placed. The long list of standard equipment includes a digital clock, tachometer, voltmeter and oil pressure gauges, tinted glass and headlamp-on reminder to name just a few. T100... a tough, durable workhorse with



impressive levels of performance, passenger comfort, handling and payload. Standard T100 safety features include a driver airbag, side impact protection, skidplates for the fuel tank and transfer case (4x4 models), halogen headlamps, adjustable 'B' Pillar shoulder belt anchors and highmount stoplamp. Powerful and dependable as a workhorse, T100 4x2's 5200 lb.* base towing capacity beats all competitors with power to spare. Full wheel covers and front and rear splash guards are standard. The cargo bed holds 4' x 8' panels between the wheelwells, has two-tier loading capability, and the one piece tailgate is easily removable without the use of tools.

*4x4 T100: 5000 lbs., approval frame hitch required.



4x2 Xtracab shown in Black with optional equipment

Tercel Paseo Corolla Camry Avalon Celica Supra Turbo Tacoma T100 RAV4 4Runner Previa

Go 4:4 it.

10

11



1997 4x4 T100 Features & Specifications

THE FOLLOWING EQUIPMENT IS COMMON TO ALL 4X4 T100 XTRACAB MODELS

BRAKES: Power-Assisted, Front Ventilated Disc, Rear Drum, Load-Sensing Brake Proportioning & By-Pass Valve.	FLOOR MATERIALS: Carpeting.	PASSENGER SEAT ADJUSTMENTS: Headrest - Vertical, Rear Walk-In Assist.	TIRES: P235/75R15, Dunlop, Radials, Mud & Snow, Full-Size Spare.
BUMPERS: Rear Step.	HEADLAMPS: Halogen, Aero Style.	REAR SEAT ADJUSTMENTS: Foldable Cushions.	TRUCK BED: 6 Foot Cargo Bed, Double Wall Cargo Bed, Removable Tailgate (No Tools Required), 4 Cargo Bed Tie-Downs, 4 Stake Pockets.
CONVENIENCE ITEMS: Digital Clock, Cup Holders, Cigarette Lighter, Fuel Cap Flange.	INSTRUMENTATION: tachometer, Trip Odometer, Voltmeter, Water Temperature & Oil Pressure Gauges, 4WD Indicator.	REAR SEAT TYPE: Jump Seats.	WARNINGS: Headlamp On, Low Washer Fluid, Low Fuel Warning Light.
ENGINE: 3.4 Liter, 190 HP, Sequential Multi-Point Electronic Fuel Injection, 24-Valve, DOHC, 5-Cylinders, Engine Oil Cooler.	INTERIOR TRIM: Semi-Fabric, Door Trim, Door Map Pockets, Door Footrest.	SAFETY: Driver Airbag Supplemental Restraint System (SRS)*, Adjustable "B" Pillar Shoulder Belt Anchors, Assist Grips, Outboard 3 Point Lap & Shoulder Belts, Front Seat Hook.	WHEELS: Silver Painted Steel Steel.
MECHANICAL FEATURES: 4WD Part Time, 2-Speed Transfer Case, A.B.D. (Automatic Disconnect Differential), Fuel Tank & Transfer Case Skidplates.	INTERNAL MIRRORS: Day/Night Rear View Mirror.	SEAT MATERIAL: Cloth.	WINDOWS: Silver Window Defoggers, Tinted Glass, Windshield Shade Band, Safety-Cut Qt. Windows.

T100 XTRACAB ADDS:

AUDIO: Radio Prep Kit including 2-Speakers & Antenna.	DRIVER SEAT ADJUSTMENTS: Headrest - Vertical, Foldable Armrest.	FRONT SEAT TYPE: 60/40 Split Bench.	WIPERS: 2-Speed, Mist Position.
--------------------------------------------------------------	------------------------------------------------------------------------	--------------------------------------------	----------------------------------------

T100 XTRACAB SRS ADDS:

AUDIO: AM/FM Stereo, 4-Speakers.	FRONT SEAT TYPE: Sport Seats.	SEAT MATERIAL: Premium Cloth.	WIPERS: 2-Speed, Intermittent/Variable.
CHROME FINISH: Front & Rear Bumpers, Grille & Door Handles.	INTERIOR LAMPS: Inners Footwell, Glove Box, Ashtray, Ignition Key, Map.	STEERING WHEEL: TR.	WINDOWS: Rear Sliding Window.
FLOOR MATERIALS: Cut-Pile Carpeting.	INTERNAL MIRRORS: Passengers Vanity Mirror.	STORAGE: Front & Centre Console Box w/ Cup Holders.	

FACTORY OPTIONS

	XTRACAB	XTRACAB SRS
Column Shift 4-Speed Overdrive Automatic Transmission (Floor Mounted Transfer Case Lever)	○	○
Colour #28X (Pewter Metallic/Black Two-Tone)	○	○

PACKAGES AVAILABLE

Xtracab Package #1: TR Steering Wheel, (5) 16" Styled Steel Wheels, 4-Wheel A.B.S. (Anti-Lock Braking System), (5) P265/70R16 Tires, Rear Sliding Window, Privacy Glass on Rear & Qt. Windows, Chrome Bumpers, Grille & Door Handles, Chrome Wheel Arch Mouldings, Variable-Intermittent Wipers, Cut-Pile Carpeting.	○	
Xtracab Package #2: Power Windows (with Driver Side Auto-Down) & Door Locks, Power Remote Control Chrome Mirrors, TR Steering Wheel, (4) Aluminum Alloy Wheels, Wheel Lock Package, 4-Wheel A.B.S. (Anti-Lock Braking System), (5) P265/70R16 Tires, Rear Sliding Window, Privacy Glass on Rear & Qt. Windows, Chrome Bumpers, Grille & Door Handles, Cruise Control, Chrome Wheel Arch Mouldings, Variable-Intermittent Wipers, Cut-Pile Carpeting.	○	
Xtracab SRS Package #1: 4-Wheel A.B.S. (Anti-Lock Braking System), (4) Aluminum Alloy Wheels, Wheel Lock Package, (5) Speaker AM/FM Cassette with Digital Code Security System, 4.100(Manual) or 4.300(Automatic) Aisle Ratio, Privacy Glass on Rear & Qt. Windows, Chrome Wheel Arch Mouldings, Wrapped Steering Wheel, Leather Wrapped Shift Knob (5-Speed only).	○	○
Xtracab SRS Package #2: Power Windows (with Driver Side Auto-Down) & Door Locks, Cruise Control, Wrapped Steering Wheel, Leather Wrapped Shift Knob (5-Speed Only), Power Remote Control Chrome Mirrors, 4-Wheel A.B.S. (Anti-Lock Braking System), (4) Aluminum Alloy Wheels, Wheel Lock Package, (5) P265/70R16 Tires, 6-Speaker AM/FM Cassette with Digital Code Security System, 4.100(Manual) or 4.300(Automatic) Aisle Ratio, Privacy Glass on Rear & Qt. Windows, Chrome Wheel Arch Mouldings.		○

DEALER OPTIONS

Air Conditioning, Bed Liner, Bed Mat, Inneave Cover	○	○
Front End Mask, Protective Floor Mats	○	○
Cassette or CD Deck, Galle/Brush Guard	○	○

COLOURS (Clear coat on all metallic/mica paint)

Exterior	Interior	Cloth*		
D45 Iodine White	Grey		●	●
196 Pewter Metallic	Grey		●	●
202 Black	Grey		●	●
28X Pewter Metallic/Black Two-Tone	Grey		●	●
317 Ruby Red	Grey		●	●
617 Sierra Green Mica	Oak		●	●

○ - Optional ● - Standard *See Airbag Notice

1997 4x4 T100 Features & Specifications

MECHANICAL

	XTRACAB	XTRACAB SRS	
Engine SVZ-TE	3.4 litre (3378 cc), V6, DOHC, 24-Valve, Sequential Multi-Point Electronic Fuel Injection	●	●
Compression Ratio	9.6:1	●	●
Horcopover (RPM)	190 (142) @ 4800rpm	●	●
Torque (N.m)	220 @ 1600 @ 3500 rpm	●	●
Suspension	Front: Independent, Double Wishbone Type with Upper Axle Bars, Gas Shock Absorbers & Stabilizer Bar Rear: Multi-Leaf Springs & Rear-Mounted Gas Shock Absorbers	●	●
Drivetrain	Front Engine/Part Time 4-Wheel Drive with A.B.D. (Automatic Disconnect Differential)	●	●
Transmission	5-Speed Overdrive Manual Column Shift 4-Speed Overdrive Automatic with Lock-Up Torque Converter (Floor Mounted Transfer Case Lever)	●	○
Brakes	Power-Assisted Ventilated Front Discs/Rear Discs, Rear Load Sensing Proportioning & By-Pass Valve 4-Wheel A.B.S. (Anti-Lock Braking System)	●	●
Transfer Case (2-Speed)	2.566:1-1.000:1	●	●
Steering	Recirculating Ball with Variable Power Assist	●	●
Tires (Dunlop)	(5) Mud & Snow Radials, P235/75R15, Including Full-Size Spare (5) P265/70R16, Including Full-Size Spare	●	○

DIMENSIONS mm (in.)

Length	5310 (209.0)
Width	1910 (75.2)
Height (Unloaded)	1819 (71.6) 1844 (72.6) w/ optional P265/70R16 tires
Cargo Bed	Length at Top Rail 1896 (74.6) Length at Floor 1934 (76.1) Width at Floor 1562 (61.5) Width at Wheel House 1250 (49.2) Height 433 (17.0)

Wheelbase	3095 (121.8)
Tread Width	Front: 1905 (63.2) Rear: 1615 (63.6) 1650 (65.0)/1960 (65.3) w/ optional P265/70R16 tires
Headroom	Front: 1007 (39.6) Rear: 960 (37.8)
Legroom	Front: 1089 (42.5) Rear: 753 (29.6)
Shoulder Room	Front: 1585 (62.4) Rear: 1528 (60.1)
Seating Capacity	Xtracab 6 Xtracab SRS: 5

GROSS VEHICLE WEIGHT kg (lbs.)

	2721 (6000)	●	●
TOWING CAPACITY kg (lbs.)	2268 (5000)	●	●

GROUND CLEARANCE mm (in.)

(Minimum Running)	210 (8.3) 235 (9.2) w/ optional P265/70R16 tires	●	●
-------------------	--------------------------------------------------	---	---

PAYLOAD Manual/Automatic kg (lbs.)

	904/873 (1965/1925)	●	○
	889/857 (1960/1890)		●

CURB WEIGHT Manual/Automatic kg (lbs.)

	1817/1848 (4005/4075)	●	○
	1832/1864 (4040/4110)		●

FUEL CAPACITY litres (gal.)

	91 (20.0)	●	●
--	-----------	---	---

FUEL CONSUMPTION RATING l/100KM MPG

City/Highway	5-Speed Manual	14.4/10.9	20/26	●	●
	4-Speed Automatic	15.2/12.7	19/22	○	○

○ - Optional ● - Standard



1997 4x2 T100 Features & Specifications

Toyota Credit



Take advantage of Toyota Credit Lease and Finance Plans. All arrangements can easily be made at your participating Toyota Dealership! Simply ask your salesperson about the complete convenience of Toyota Credit.

We've Got You Covered!



With Extra Care Protection, your new Toyota has inflation protected coverage from mechanical failure, road emergencies, and much more. It is the affordable and cost effective way to guarantee your peace of mind and to protect your investment whether you buy or lease. EOP is not a warranty... it's much more! It can provide you and your new Toyota with coverage such as towing, Emergency Road Service, Rental Assistance, and Tire Road Hazard Protection. It can take over with Mechanical Protection when your Toyota factory warranty ends. Please consult with your Toyota Dealer about this valuable option, because with EOP "we've got you covered!"

THE FOLLOWING EQUIPMENT IS COMMON TO ALL 4X2 T100 MODELS

AUDIO: Radio Pre Kit including 2-Speakers & Antenna. BRAKES: Power-Assisted, Front Ventilated Disc, Rear Drum, Load Sensing Brake Proportioning & 80/100psi Valve. BURNESS: Rear Step. CONVENIENCE ITEMS: Digital Clock, Cup Holders, Cigarette Lighter, Fuel Cap Hanger. ENGINE: 3.4 Liter, 190 HP Sequential Multi-Point Electronic Fuel Injection, 24 Valve, DOHC, 6-Cylinder, Engine Oil Cooler.	EXTERIOR FEATURES: Full-Body Frame Construction, Front & Rear Splash Guards, High-mount Spoiler. EXTERNAL MIRRORS: Foldable, Dual. FRONT SEAT TYPE: Bench. HEADLAMPS: Halogen, Aero Style. INSTRUMENTATION: Tachometer, Trip Odometer, Voltmeter, Water Temperature & Oil Pressure Gauges. INTERIOR TRIM: Semi-fabric Door Vins, Door Map Pockets, Door Footrest.	INTERNAL MIRRORS: Day/Night Rear View Mirror. SAFETY: Driver Airbag Supplemental Restraint System (SRS)*, Adjustable "B" Pillar Shoulder Belt Anchors, Outboard 3 Point Lap & Shoulder Belts. SECURITY: Fuel Door Lock. STEERING: Power-Variable Assist, Rack & Pinion. TIRES: P225/75R15, Radial, Dunlop. W/Season, Full Size Spare. TRANSMISSION: 5-Speed, Manual, Overdrive.	TRUCK BED: Double Wall Cargo Bed, Removable Tailgate (No locks Required), 4 Cargo Bed Tie-Downs. WARNINGS: Headlamp On, Low Wiper Fluid, Low Fuel Warning Light. WHEELS: Full Wheel Covers. WINDOWS: Side Window Defoggers, Tinted Glass, Windshield Shark Band. WIPERS: 2-Speed, Mist Feature.
-----------------------------------------------------------------------------------------------------------------------------------------------------------------------------------------------------------------------------------------------------------------------------------------------------------------------------------------------------------------------------------------------------------------------------------------------------	----------------------------------------------------------------------------------------------------------------------------------------------------------------------------------------------------------------------------------------------------------------------------------------------------------------------------------------------------------------------------------------------------------------------------	----------------------------------------------------------------------------------------------------------------------------------------------------------------------------------------------------------------------------------------------------------------------------------------------------------------------------------------------------------------------------------------------------------------------------------------------------	------------------------------------------------------------------------------------------------------------------------------------------------------------------------------------------------------------------------------------------------------------------------------------------------------------------------------------------------

T100 REGULAR CAB ADDS

SAFETY: Assist Grip.	SEAT MATERIAL: Vinyl.	TRUCK BED: 8 Foot Cargo Bed, 6 Stake Pockets.
-----------------------------	------------------------------	------------------------------------------------------

T100 XTRACAB ADDS

DRIVER SEAT ADJUSTMENTS: Headrest-Vertical, Foldable Armrest. FLOOR MATERIALS: Carpeting. FRONT SEAT TYPE: 60/40 Split Bench.	PASSENGER SEAT ADJUSTMENTS: Headrest-Vertical, Rear Walk-In Assist. REAR SEAT ADJUSTMENTS: Foldable Outbacks. REAR SEAT TYPE: Jump Seats.	SAFETY: Assist Grips. SEAT MATERIAL: Full Cloth. STORAGE: Under Rear Seat Compartment. TRUCK BED: 6 Foot Cargo Bed, 4 Stake Pockets.	WINDOWS: Swing-Out Ctx. Windows.
----------------------------------------------------------------------------------------------------------------------------------------------------------	----------------------------------------------------------------------------------------------------------------------------------------------------------------------	---------------------------------------------------------------------------------------------------------------------------------------------------------------------------	-----------------------------------------

FACTORY OPTIONS

	REGULAR CAB	XTRACAB
Column Shift 4-Speed Overdrive Automatic Transmission	<input type="checkbox"/>	<input type="checkbox"/>
Colour #238 (Power Metallic/Black Two-Tone)	<input type="checkbox"/>	<input type="checkbox"/>

PACKAGES AVAILABLE

REGULAR CAB	XTRACAB	
Chrome - Front & Rear Bumpers, Grille & Door Handles, 4-Wheel A.B.S. (Anti-lock Braking System), Tilt Steering Wheel, Cut-File Carpeting, Rear Side Window, Full Fabric Bench Seat with Fold-Down Armrest & Adjustable Headrests, Variable Intermittent Wipers, Cruise Control, Chrome Wheel Arch Moulding	<input type="checkbox"/>	<input type="checkbox"/>
XTRACAB - Chrome - Front & Rear Bumpers, Grille & Door Handles, 4-Wheel A.B.S. (Anti-lock Braking System), Tilt Steering Wheel, Rear Slender Window, Cruise Control, Privacy Glass on Rear & Ctx. Windows, Variable Intermittent Wipers, Cut-File Carpeting, Chrome Wheel Arch Moulding	<input type="checkbox"/>	<input type="checkbox"/>

DEALER OPTIONS

	REGULAR CAB	XTRACAB
AM/FM Stereo or AM/FM Stereo Cassette	<input type="checkbox"/>	<input type="checkbox"/>
Air Conditioning, Bed Liner, Bed Mat (Xtracab only)	<input type="checkbox"/>	<input type="checkbox"/>
Rear Step Bumper, Inseam Cover	<input type="checkbox"/>	<input type="checkbox"/>
Front End Mask, Protective Floor Mats	<input type="checkbox"/>	<input type="checkbox"/>
Cassette or CD Deck	<input type="checkbox"/>	<input type="checkbox"/>

COLOURS (Color cost on all metallic/mica paint)

Exterior	Interior	Vinyl	Cloth	Cloth (Xtracab)	REGULAR CAB	XTRACAB
045 Jade White	Grey	Grey	Grey		<input checked="" type="checkbox"/>	<input checked="" type="checkbox"/>
196 Pewter Metallic	Grey	Grey	Grey		<input checked="" type="checkbox"/>	<input checked="" type="checkbox"/>
202 Black		Grey			<input checked="" type="checkbox"/>	<input checked="" type="checkbox"/>
307 Ruby Red	Grey	Grey	Grey		<input checked="" type="checkbox"/>	<input checked="" type="checkbox"/>
607 Sierra Green Mica	Grey	Oak	Oak		<input checked="" type="checkbox"/>	<input checked="" type="checkbox"/>
288 Pewter Metallic/Black Two-Tone		Grey			<input checked="" type="checkbox"/>	<input checked="" type="checkbox"/>

○ - Optional *See Airbag Notice

1997 4x2 T100 Features & Specifications

MECHANICAL	REGULAR CAB	XTRACAB
Engine SVZ-FF 3.4 Liter (3378 cc), V6, DOHC, 24-Valve, Sequential Multi-Point Electronic Fuel Injection	<input checked="" type="checkbox"/>	<input checked="" type="checkbox"/>
Compression Ratio 9.6:1	<input checked="" type="checkbox"/>	<input checked="" type="checkbox"/>
Horsepower (kW) 190 (142) @ 4000 rpm	<input checked="" type="checkbox"/>	<input checked="" type="checkbox"/>
Torque (Nm) 220 lb. ft. (298) @ 3500 rpm	<input checked="" type="checkbox"/>	<input checked="" type="checkbox"/>
Suspension Front: Independent Double-Wishbone Type with Lower Torsion Bars, Hydraulic Shock Absorbers & Stabilizer Bar Rear: Multi-Leaf Spring & Gas-Mounted Hydraulic Shock Absorbers	<input checked="" type="checkbox"/>	<input checked="" type="checkbox"/>
Drivetrain Front Engine/Rear Wheel Drive	<input checked="" type="checkbox"/>	<input checked="" type="checkbox"/>
Transmission 5-Speed Overdrive Manual Column-Shift 4-Speed Overdrive Automatic with Lock-Up Torque Converter	<input checked="" type="checkbox"/>	<input type="checkbox"/>
Brakes Power-Assisted Ventilated Front Discs/Rear Drums, Rear Load Sensing Proportioning & By-Pass Valve 4-Wheel A.B.S. (Anti-lock Braking System)	<input checked="" type="checkbox"/>	<input type="checkbox"/>
Steering Rack & Pinion with Variable Power Assist	<input checked="" type="checkbox"/>	<input checked="" type="checkbox"/>
Tires (5) Dunlop All-Season Radials, P225/75R15, Including Full Size Spare	<input checked="" type="checkbox"/>	<input checked="" type="checkbox"/>

DIMENSIONS mm (in.)

Length	5310 (209.0)
Width	1910 (75.2)
Height (Unloaded)	1717 (67.6) Xtracab 1742 (68.6)
Cargo Bed	Length at Top Rail 2446 (96.3) Xtracab 1896 (74.6) Length at Floor 2484 (97.8) Xtracab 1934 (76.1) Width at Floor 1562 (61.5) Width at Wheel House 1250 (49.2) Height 433 (17.0)
Wheelbase	3095 (121.8)
Tread Width	Front: 1570 (61.8) Rear: 1625 (64.0)
Headroom	Front: 1007 (39.6) Xtracab Rear: 960 (37.8)
Legroom	Front: 1089 (42.5) Xtracab Rear: 753 (29.6)
Shoulder Room	Front: 1585 (62.4) Xtracab Rear: 1528 (60.1)
Seating Capacity	Regular Cab: 3 Xtracab: 6

GROSS VEHICLE WEIGHT kg (lbs.)

Regular Cab: 2768 (5000) Xtracab: 2585 (5700)	<input checked="" type="checkbox"/>	<input checked="" type="checkbox"/>
-----------------------------------------------	-------------------------------------	-------------------------------------

TOWING CAPACITY kg (lbs.)

2350 (5200)	<input checked="" type="checkbox"/>	<input checked="" type="checkbox"/>
-------------	-------------------------------------	-------------------------------------

GROUND CLEARANCE mm (in.)

(Minimum Ramping) 195 (7.7)	<input checked="" type="checkbox"/>	<input checked="" type="checkbox"/>
-----------------------------	-------------------------------------	-------------------------------------

PAYLOAD Manual/Automatic kg (lbs.)

712/609 (1570/1340)	<input checked="" type="checkbox"/>	<input type="checkbox"/>
975/962 (2150/2120)	<input type="checkbox"/>	<input checked="" type="checkbox"/>

CURB WEIGHT Manual/Automatic kg (lbs.)

1556/1569 (3430/3460)	<input checked="" type="checkbox"/>	<input type="checkbox"/>
1610/1624 (3550/3580)	<input type="checkbox"/>	<input checked="" type="checkbox"/>

FUEL CAPACITY litres (gal.)

91 (20.0)	<input checked="" type="checkbox"/>	<input checked="" type="checkbox"/>
-----------	-------------------------------------	-------------------------------------

FUEL CONSUMPTION RATING L/100 KM MPG

City/Highway	5-Speed Manual	14.7/10.7	19/26
	4-Speed Automatic	14.1/10.9	20/26

○ - Optional *Standard

FUEL CAPACITY litres (gal.)

91 (20.0)	<input checked="" type="checkbox"/>	<input checked="" type="checkbox"/>
-----------	-------------------------------------	-------------------------------------

FUEL CONSUMPTION RATING L/100 KM MPG

City/Highway	5-Speed Manual	14.7/10.7	19/26
	4-Speed Automatic	14.1/10.9	20/26

○ - Optional *Standard

FUEL CONSUMPTION RATING L/100 KM MPG

City/Highway	5-Speed Manual	14.7/10.7	19/26
	4-Speed Automatic	14.1/10.9	20/26

○ - Optional *Standard

FUEL CONSUMPTION RATING L/100 KM MPG

City/Highway	5-Speed Manual	14.7/10.7	19/26
	4-Speed Automatic	14.1/10.9	20/26

○ - Optional *Standard

FUEL CONSUMPTION RATING L/100 KM MPG

City/Highway	5-Speed Manual	14.7/10.7	19/26
	4-Speed Automatic	14.1/10.9	20/26

○ - Optional *Standard

FUEL CONSUMPTION RATING L/100 KM MPG

City/Highway	5-Speed Manual	14.7/10.7	19/26
	4-Speed Automatic	14.1/10.9	20/26

○ - Optional *Standard

FUEL CONSUMPTION RATING L/100 KM MPG

City/Highway	5-Speed Manual	14.7/10.7	19/26
	4-Speed Automatic	14.1/10.9	20/26

○ - Optional *Standard

FUEL CONSUMPTION RATING L/100 KM MPG

City/Highway	5-Speed Manual	14.7/10.7	19/26
	4-Speed Automatic	14.1/10.9	20/26

○ - Optional *Standard

FUEL CONSUMPTION RATING L/100 KM MPG

City/Highway	5-Speed Manual	14.7/10.7	19/26
	4-Speed Automatic	14.1/10.9	20/26

○ - Optional *Standard

Toyota... "We Care"

Toyota... "We Care" is our promise to make your every experience with Toyota unforgettable. Your satisfaction before and after purchase is our goal. Simply contact your Dealer's Customer Relations Manager with any questions you may have. Should further assistance be required, please call Toyota Canada's Customer Assistance Centre toll-free from anywhere in Canada, 1-800-263-7640.





CARS & TRUCKS 1997



TERCEL



TACOMA 4x2



PRIUS



TACOMA 4x4



COROLLA



T100 4x2



CAMRY



T100 4x4



AVOLON



RAV4



CELICA



4RUNNER



SUPRA



PREVA

New Vehicle Warranty Summary

NO DEDUCTIBLES - NO TRANSFER FEES

COMPREHENSIVE COVERAGE - 3 YEARS OR 60,000 KM

This warranty covers repairs on any part of the vehicle that is defective in material or workmanship under normal use and maintenance. Different warranties apply to original tires.

POWERTRAIN & MAJOR COMPONENTS - 5 YEARS OR 100,000 KM

This warranty covers repairs to powertrain and specific major components on the vehicle that are defective in material or workmanship under normal use and maintenance.

CORROSION PERFORATION - 5 YEARS UNLIMITED DISTANCE

Any sheet metal found, under normal use, to have developed a perforation from corrosion due to defects in material or workmanship.



Toyota's concern for the environment requires us to try to make our vehicles as safe as possible. We support this concern. Our brochures are printed on recycled paper.

PRINTED IN CANADA ©1997 TOYOTA