

METRO

2000



CHEVROLET



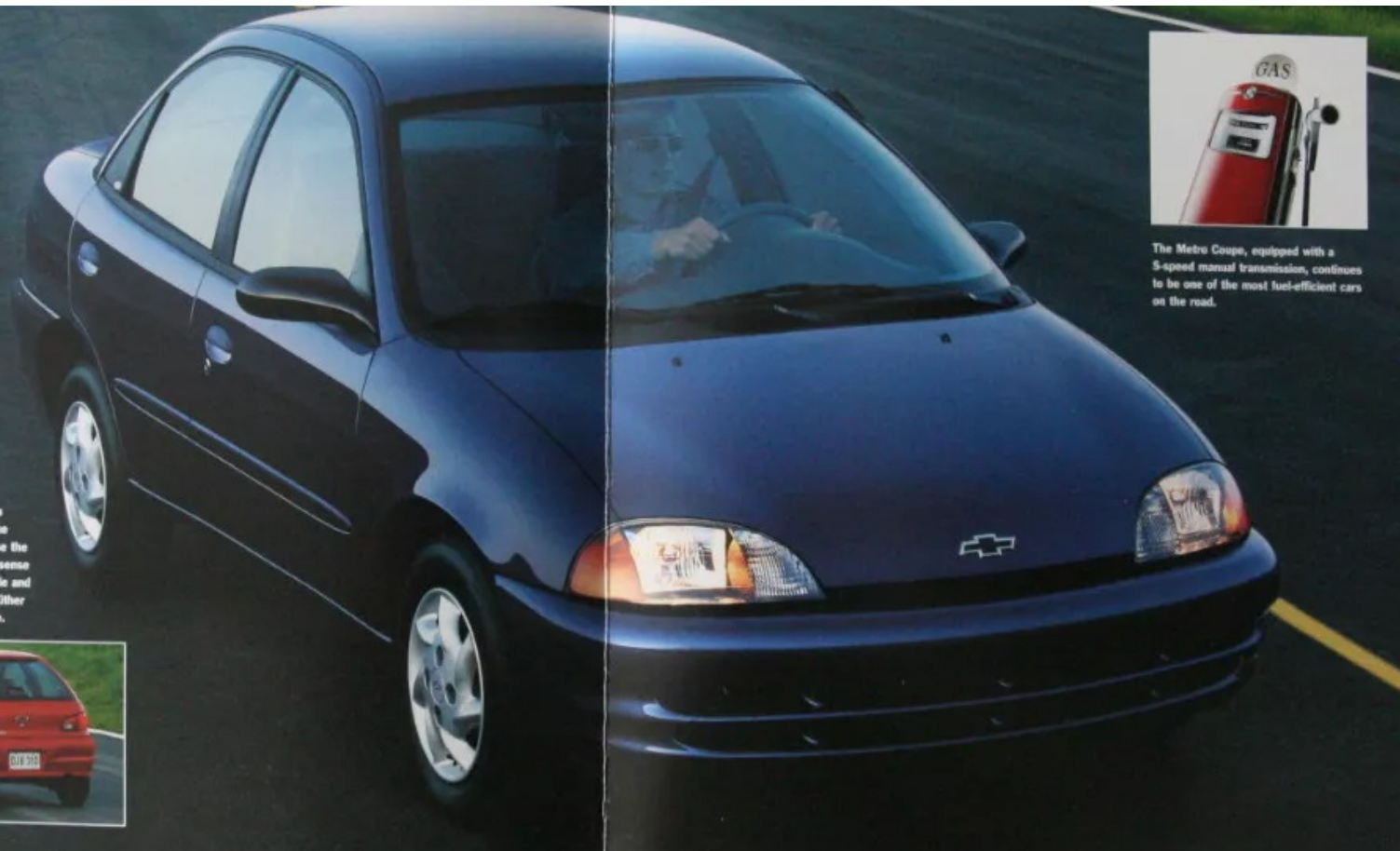
METRO 2000

You're about to outsmart all those people who go out and spend a lot of money trying to make an impression with the vehicle they drive. Not that there's any shortage of impressive features in the Chevrolet Metro. But this is one car that is built to be used, not to be exhibited as a piece of driveway sculpture. You want air bags? Next Generation dual front air bags are standard on every Metro. Care about fuel economy? You'd have to look long and hard to find another car as efficient. Want a comfortable, durable car with an overachieving personality? You've found it: the Canadian-built Chevrolet Metro for the year 2000.

Find information about the Chevrolet Metro at: www.gmcanada.com*



You choose. Metro comes in both a 4-door Sedan, shown at right, or the 2-door Coupe, shown below. Choose the configuration that makes the most sense for the way you drive and the people and stuff you bring along for the ride. Either way, Metro delivers long-term value.



The Metro Coupe, equipped with a 5-speed manual transmission, continues to be one of the most fuel-efficient cars on the road.



While Metro Sedan's reclining high-back front bucket seats will impress you with their comfort, a standard split-folding rear seatback will impress you with its practicality.



Metro isn't just economical, it's also fun to drive. To help keep you in sync, an analogue gauge cluster crisply communicates important information.

SAFETY AND SECURITY

	COUPE	SEDAN
Air bags – driver and front passenger, frontal, Next Generation	S	S
Brakes – 4-wheel, anti-lock braking system (ABS)	0	0
Brake/transmission shift interlock (automatic transmission only)	S	S
Door locks – rear door, child-security	-	S
Headlights – Daytime Running Lights with instrument panel indicator	S	S
Tether anchors – child-seat	S	S

MECHANICAL

	COUPE	SEDAN
Battery – Delco Freedom II	S	S
Brakes – power, front disc/rear drum	S	S
Drive – front-wheel	S	S
Engine – 1.0 L L3 with TBI; Horsepower – 55 @ 5700 rpm; Torque – 58 lb.-ft. @ 3300 rpm	S	-
Engine – 1.3 L 16-valve L4 with MFI; Horsepower – 79 @ 6000 rpm; Torque – 75 lb.-ft. @ 3000 rpm	0	S
Exhaust system – stainless steel*	S	S
Steering – rack-and-pinion	S	S
Steering – power, rack-and-pinion	-	0
Suspension – 4-wheel-independent	S	S
Transmission – 5-speed manual with overdrive	S	S
Transmission – 3-speed automatic	0	0

* Muffler and tailpipe only. † Requires 1.3L 16-valve L4 engine.

EXTERIOR

	COUPE	SEDAN
Bumpers – painted body-colour	S	S
Glass – tinted	S	S
Headlights – composite halogen (flash-to-pass)	S	S
Mirrors – dual, left and right remote	S	S
Mouldings – bodyside, graphite gray	S	S
Tires – P155/80R13 all-season blackwall	S	S
Wheels – 13" x 4.5" steel with full wheel covers, 3-spoke (A)	S	-
Wheels – 13" x 4.5" steel with full wheel covers, 7-spoke (B)	-	S
Windshield wipers – 2-speed with fixed delay	S	S
Wiper/washer – rear window	S	-

INTERIOR

	COUPE	SEDAN
Air conditioning	0	0
Console – front floor with storage tray	S	S
Cupholders – pull out, dual centre console	S	S
Defogger – electric rear window	S	S
Door locks – power	-	0

EXTERIOR/INTERIOR COLOUR COMPATIBILITY

	COUPE	SEDAN
16 – White	•	•
17 – Silver Metallic	•	•
19 – Black Licorice	•	•
29 – Medium Blue Metallic	•	•
35 – Medium Green Metallic	•	•
47 – Dark Blue Metallic	•	•
53 – Sunset Red Metallic	•	•
74 – Wildfire Red	•	•

EXTERIOR COLOURS

Colours may not be exactly as illustrated due to restrictions of printing process. Please see your sales consultant for specific colour and model availability.

		
16 – White	29 – Medium Blue Metallic	53 – Sunset Red Metallic
		
17 – Silver Metallic	35 – Medium Green Metallic	74 – Wildfire Red
		
19 – Black Licorice	47 – Dark Blue Metallic	

INTERIOR (CONTINUED)

	COUPE	SEDAN
Floor mats – front and rear, carpeted	S	S
Head restraints – front seat, integral	S	S
Instrumentation – analogue cluster (includes speedometer, coolant temperature and fuel gauges)	S	S
Instrumentation – tachometer and trip odometer	S	S
Light – trunk	-	S
Map pockets – front door	S	S
Seat – front passenger "easy-entry" feature	S	-
Seats – cloth high-back reclining bucket seats	S	-
Seats – uplevel cloth high-back reclining bucket seats	-	S
Seats – full-folding rear seatback	S	-
Seats – rear, split-folding with pass-through	-	S
Security cover – cargo	S	-
Trunk – release, remote	-	S

SOUND SYSTEMS

	COUPE	SEDAN
All Metro sound systems include an electronically tuned Delco AM/FM stereo with seek up/down, digital clock and 4-speaker sound system		
Radio Prep Package – includes antenna and 4-speaker system	S	S
AM/FM stereo, cassette tape player and Auto Tone Control	0	0
AM/FM stereo, CD player and Auto Tone Control	0	0

EXTERIOR DIMENSIONS, mm (in.)

	COUPE	SEDAN
Wheelbase	2365 (93.1)	2365 (93.1)
Length	3795 (149.4)	4165 (164.0)
Width	1590 (62.6)	1590 (62.6)
Height	1390 (54.7)	1407 (55.4)
Front tread	1385 (54.5)	1385 (54.5)
Rear tread	1360 (53.5)	1360 (53.5)

INTERIOR DIMENSIONS, mm (in.) front/rear

Head room	993/915 (39.1/36.0)	999/948 (39.3/37.3)
Leg room	1079/819 (42.5/32.2)	1079/819 (42.5/32.2)
Shoulder room	1242/1242 (48.9/48.9)	1245/1227 (49.0/48.3)
Hip room	1199/1115 (47.2/43.9)	1205/1090 (47.4/42.9)

CAPACITIES/WEIGHT

Cargo – rear seat up, L (cu. ft.)	238 (8.4)	292 (10.3)
– rear seat stowed, L (cu. ft.)	636 (22.5)	N/A
Fuel tank, L (gal.)	39 (8.6)	39 (8.6)
Curb weight (estimated), kg (lb.)	825 (1818)	900 (1985)

A WORD ABOUT THIS BROCHURE

Some of the equipment shown or described throughout this brochure may be available at extra cost. This brochure is based on the latest information at the time of printing. General Motors of Canada Limited reserves the right to make changes at any time, without notice, to specifications, equipment, colours, models, availability, programs and services. Your Chevrolet dealer is the best source for up-to-date information. General Motors reserves the right to lengthen or shorten the model year for any product, for any reason, or to start and end model years at different times.

A WORD ABOUT ASSEMBLY

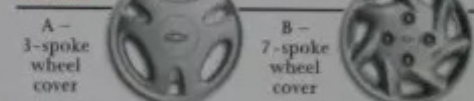
Chevrolets are equipped with engines and components produced and assembled by different operating units of General Motors, its subsidiaries and suppliers and these engines and components may change or be obtained from different sources from time to time. All such engines and components are approved for use in Chevrolets. Certain equipment ordered may be unavailable at the time of assembly and we suggest that you verify that your vehicle includes the equipment you ordered, or if there are changes, that they are acceptable to you.

General Motors, GM, the GM emblem, the GM Canada Web site address, the GM Accessories logo, Chevrolet, the Chevrolet emblem, Dexron, Freedom, Metro, SMARTLEASE and the TOTAL Warranty are all trade marks of the General Motors Corporation and/or General Motors of Canada Limited.

Printed in Canada, August 1999.

© Copyright 1999 General Motors of Canada Limited

WHEELS



INTERIOR FABRICS



A – Coupe Cloth

B – Sedan Uplevel Cloth

