

# THE TOTAL WAGON



The **"NOW"** Travelall® by International ®



Six-passenger model in Alpine White with simulated-vinyl black top and distinctive Custom trim—one of three exterior trim options.

## TOTAL TOW-ABILITY

Distinctive new styling, exciting new trim, beautiful new interiors and big new performance. That's the "NOW" Travelall—the *total* wagon from International. A wagon that's more than new in looks. It's the wagon that is *totally* designed to be better than ever. The one that takes up where conventional wagons leave off.

Stronger frames and sturdier, tighter bodies can take long hours of tough pulling over rugged roads without strain. Suspension refinements let you lean into tight curves, take road swells, hills, humps and bumps with greater stability than you've ever experienced. And power is greater. Brakes are bigger. Steering is easier. The ride much softer and quieter. In short, the "NOW" International Travelall introduces a level of appearance,

performance and comfort never before attained in a wagon of this type.

With this combination of true automotive feeling and total function you have the largest selection of optional axles and other heavy-duty towing equipment. Like new Level-Aire ride that keeps you on an even keel with standard springs when under a heavy load. Or our new, exclusive factory-installed trailer hitch mount with a built-in electrical connector. It not only eliminates the fussing and fretting of getting a hitch installed, it simplifies your task every time you hook up. Auxiliary fuel tank, increased-capacity electrical system, increased cooling . . . the list goes on and on. Small wonder the "NOW" Travelall takes to towing like no other wagon can.

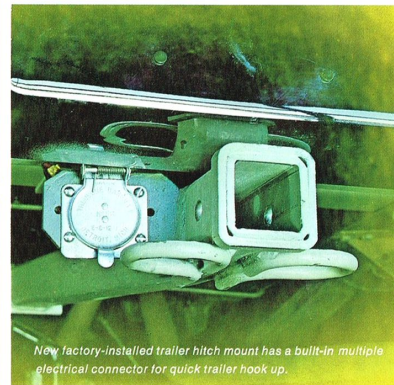
*Fashion/Action* from INTERNATIONAL



Wagons with standard springs often bottom out under load. That's why stiffer heavy-duty or auxiliary springs are necessary.



New Level-Aire ride option on Travelall wagons keeps you on even keel with standard springs and gives you a softer ride when not towing. Air pressure can be adjusted to meet your load conditions.



New factory-installed trailer hitch mount has a built-in multiple electrical connector for quick trailer hook up.



Six-passenger model in Lime Green Metallic with simulated vinyl black top and Custom trim

## TOTAL STOW-ABILITY

The "NOW" Travelall also takes to carrying as few wagons can. Its oversize doors open a full 90 degrees for easier side loading. And a high 'n wide tailgate opening lets you slide in big, bulky items with greater ease. What's more, when fully loaded, its back end remains level — thanks again to an extraordinary strong and stable suspension system. Steering under full load is a snap because our new reciprocating ball-type steering mechanism comes close to the feel of power.

The Travelall is also a very passenger-pleasing wagon. Nine adults can sit three abreast without knocking knees and clicking elbows. And they all face forward. It's higher on the inside so even six-footers can ride with their hats on. Moreover, there's no skimping on foam padding in optional rear seats. The same goes for other interior appointments. Even the lowest-priced

model has the same thick foam-padded seat construction as top-of-the-line interiors. The standard interior is also color-coordinated in one of four colors—red, blue, green or black.

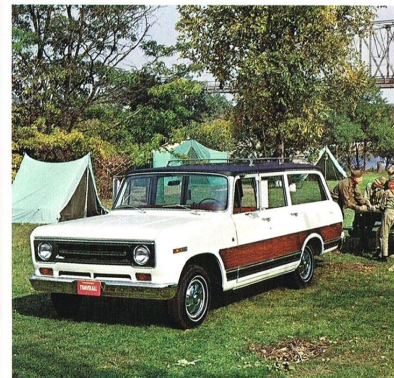
The cargo capacity of this year's Travelall has been improved by a second seat that folds completely out of the way, flush with the floor. The third seat can be completely removed — giving you 124 cubic feet of cargo space. Hauling ability is also enhanced with a new heavy-duty torsion bar front end suspension that can be ordered instead of the standard torsion bar. It adds to your carrying capacity without loss in riding comfort. In addition, low-friction leaf springs and a new exclusive method of mounting the body makes the "NOW" Travelall wagon more pleasant riding than ever.

It all totals up to a lot of stow-ability.

*Fashion/Action* from **INTERNATIONAL**



Extra high 'n wide tailgate opening lets you slide in big, bulky items with ease.



A super trooper for outings. And the nine-passenger model rides everyone facing forward on thick padded seats.



Six-passenger model in Dark Bright Blue Metallic with Deluxe trim and matching Blue interior

## TOTAL GO-ABILITY

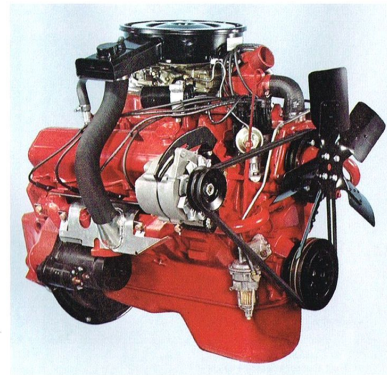
The unbounded ability of the "NOW" Travelall wagon makes conventional ones seem weak-kneed in comparison. Thanks to a higher ground clearance it takes you over the off-beat routes with ease. Lets you wheel right down to the water's edge, ride to where others have to walk. And with all-wheel drive models, you can literally make your own road.

Aside from all-wheel drive, your Travelall wagon can be ordered with an International Powr-Lok limited-slip differential which automatically transfers power to the rear wheel with the most traction. Mighty handy in mud or snow. You also have a wide choice of rear axle ratios to best suit your particular driving requirements. For front end suspensions, there are three selections: standard or heavy-duty independent torsion bar for pas-

senger riding comfort, available on the Model 1000D. And leaf-type springs on other models for greater strength and carrying capacity.

The Travelall also powers up for any purpose with a complete range of engines and transmissions. There's a peppy 145 hp six for economy and a choice of high-torque V-8's running up to a top-performance 392 cubic inch with 235 hp. So, whether you use your Travelall for scooting around, light hauling or heavier trailer pulling, it can be equipped with just the right engine that best fits your driving and load needs. The same goes for gearing. Depending on engine, you have a selection of three, four or five-speed manual transmissions or three-speed automatic. Summed up, the Travelall won't let you down.

*Fashion/Action* from **INTERNATIONAL**



New 235 hp V-8 gives you smooth performance over the road and high-torque power in the rough.



All-wheel drive models get you anywhere and back. And they're available with automatic transmission.

# STYLED FOR TOTAL FASHION



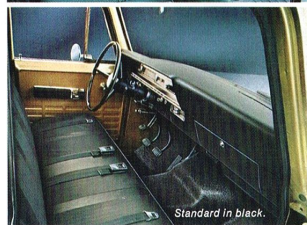
Color-coordinated interiors in red, blue, green or black offer a choice of Standard or Custom upholstery and trim. Bucket seats with center armrest-storage console optional. Red Custom interior shown.



Custom in green.



Custom in blue.



Standard in black.

## INTERIOR SELECTIONS

**Standard interior**—offers all basic comfort and convenience features. Color-coordinated to exterior. Foam-padded bench seat with choice of red, blue, green or black all-vinyl upholstery. Harmonizing acoustical headliner and trim. Fully-instrumented padded dash. Dual padded sun visors and arm rests. Fresh air heater and defroster system. Black rubber floor covering. Ash tray. Dome light. Aluminum door sill cover. Plus a complete safety equipment package.

**Custom interior**—includes Standard items plus the added attractiveness of bench seat in red, blue, green or black custom upholstery with vinyl bolsters and "breathing" nylon inserts. Matching padded

door panels and vinyl floor covering. Brushed aluminum instrument panel trim. Padded horn button. Cigar lighter. Safety belt retractors. Coat hook. Also includes under-hood insulation, dual electric horns, and three-pass muffler for additional quietness and engine performance.

**Additional interior options**—bucket seats in red, blue, green or black with center armrest-storage console. Matching nylon carpeting.

## POPULAR COMFORT-CONVENIENCE OPTIONS

Integral power steering • Power brakes • Integral built-in air conditioning • Solid-state pushbutton AM

or AM-FM radio • Eight-track stereo tape player • Super-capacity heater and defroster • Tinted glass • Electric rear window • Luggage rack • Dual Jr. king-size mirrors.

## POPULAR PERFORMANCE EQUIPMENT

Level-Aire ride • Factory-installed trailer hitch mount with built-in multiple electrical connector • 16-gal. auxiliary fuel tank • Modulated air control for fast engine warm up • Powr-Lok limited-slip differential • Increased-capacity battery • Oversize alternator • Automatic choke • Higher-capacity rear axles and springs • Oversize clutch • Larger size rims and tires • Traction tires • Heavy-duty shock absorbers.

*Fashion/Action* from INTERNATIONAL

## EXTERIOR TRIM SELECTIONS

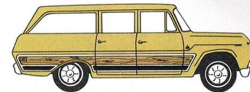
**Standard trim**—white enameled grille, hub caps and bumpers. **Deluxe trim**—bright finish grille, headlight and tail light bezels, windshield trim, drip moldings, rocker panel trim and vent wings. **Custom trim**—all items in Deluxe trim package plus wood-grain side panels with bright trim. **Additional trim options**—chrome bumpers, stainless steel wheel covers or bright finish hub caps, simulated-vinyl black top.



Standard trim.



Deluxe trim.



Custom trim.

## EXTERIOR AND INTERIOR COLOR COMBINATIONS

Simulated-vinyl black top, other two-tone combinations, and special colors available at slight extra cost.

		
Copper Metallic Black interior.	Medium Blue Metallic Blue interior.	Dark Green Green interior.
		
Lime Green Metallic Green interior.	Gold Metallic Black interior.	Schoolbus Yellow Black interior.
		
Plum Metallic Black interior.	Tam O'Shanter Green Metallic Green interior.	Orange Black interior.
		
Alpine White Blue or Red interior.	Dark Bright Blue Metallic Blue interior.	Red Red or Black interior.
		Black Blue or Red interior.

# BUILT FOR TOTAL ACTION



Double-sure stopping power with up to 41% larger brakes and a split-hydraulic braking system.



Thick foam-padded seats in handsome fabrics really give you that luxurious feel. And they're standard.



## CHOICE OF FRONT SUSPENSIONS

Model 1000D is available with a choice of two independent torsion bar suspensions. Standard unit provides optimum smoothness for normal driving conditions. Optional Heavy-duty unit combines front end flexibility with greater firmness for heavier loads and more rugged roads. Models 1100D and 1200D have I-beam axle and leaf springs for maximum load carrying ability and off-road stability.



Go as luxuriously as you like with new built-in integral air conditioning, AM-FM radio, stereo—most any option you want.



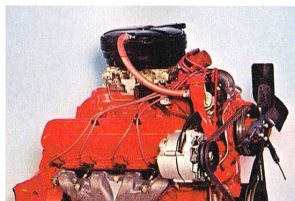
Clutch refinements greatly reduce pedal effort.



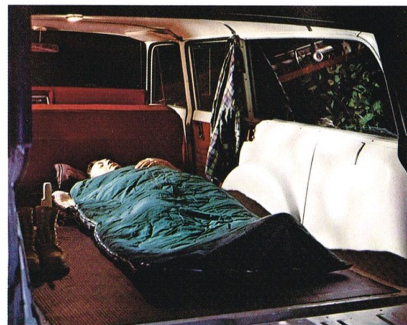
Easier, smoother steering—almost feels like power.



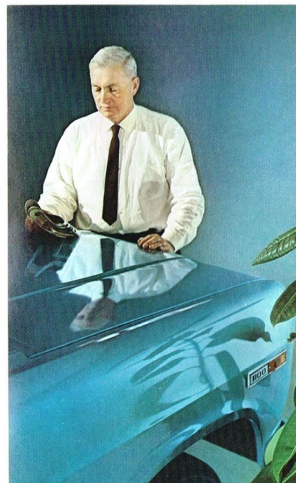
Built for long, long life right down to heavy-duty door hinges.



Action power—a complete range of engines from a peppy 145 hp six to top-performance 235 hp V-8.



Second seat folds completely flush with the floor so you can use space right up to back of the front seat.



Stays factory-fresh for years with special rustproofing process and super enamel finish.



Smoother-than-ever ride with new low-friction leaf springs that soak up vibrations, especially when not under load.



A more quiet ride with unitized body construction, improved body mounts and sound-deadening insulation.

In total, the "NOW" International Travelall wagon gives you the appearance you like with the performance you want. We call it "fashion/action." You'll call it the finest combination of true automotive styling and total function of any wagon on the road. A combination of qualities that lets you do things no other wagon can. Like its extra-durable construction and high ground clearance that permits you to drive over rutted roads and uneven open ground with

ease. And high-torque engines that really put the power where it belongs—at the wheels. The Travelall doesn't shackle you to the road.

## STANDARD SAFETY EQUIPMENT

Every Travelall model comes factory equipped with a complete safety package which includes seat belts on all seats • Front seat shoulder harness anchors • Padded dash and sun visors • Windshield washers

- Two-speed electric wipers with non-glare arms.
- Hazard warning flashing lights • Recessed steering wheel • Impact-absorbing anti-penetration steering column • Break-away inside mirror • Outside mirrors • Non-glare interior trim • Safety door latches • Backup lights • Side fender running lights and reflectors • Safety glass • Split-hydraulic brake system with warning light.

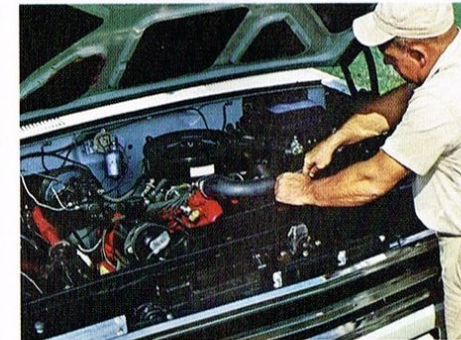
*Fashion/Action* from INTERNATIONAL

# The "NOW" Travelall® by International® ...the "total" wagon



## POWER TEAMS

Models	Engines					Transmissions							
	145 hp Six 6-232	155 hp V-8 V-266*	193 hp V-8 V-304	197 hp V-8 V-345	235 hp V-8 V-392	3-speed Synch.	Heavy-Duty 3-speed†	Automatic 3-speed	Heavy-Duty Automatic	4-speed	Heavy-Duty 4-speed	5-speed Direct‡	5-speed overdrive‡
1000D	Std.		Opt.	Opt.	Opt.	Std.	Opt.	Opt.	Opt.	Opt.		Opt.	Opt.
1100D	Std.		Opt.	Opt.	Opt.	Std.	Opt.	Opt.	Opt.	Opt.		Opt.	Opt.
1200D		Std.	Opt.	Opt.	Opt.	Std.	Opt.		Opt.	Opt.	Opt.	Opt.	Opt.



No fumbling under the hood. All routine service points are within easy reach.

## All-Wheel Drive Models

1100D 4 x 4	Std.		Opt.	Opt.	Opt.	Std.	Opt.	Opt.	Opt.	Opt.	Opt.	Opt.	Opt.
1200D 4 x 4		Std.	Opt.	Opt.	Opt.	Std.	Opt.		Opt.	Opt.	Opt.	Opt.	Opt.

Specifications, descriptions and illustrative material in this literature are as accurate as known at time of publication, but are subject to change without notice. Illustrations may include optional equipment and accessories and may not include all standard equipment.

The following trademarks of International Harvester Company are registered in the U.S. Patent Office: INTERNATIONAL, TRAVELALL and 

\*V-266 engine not available in California. Select from V-304, V-345 or V-392.

†Not available with six cylinder engine.

‡Available with V-304, V-345 and V-392 engines.

 **INTERNATIONAL HARVESTER COMPANY**  
CHICAGO, ILLINOIS

70