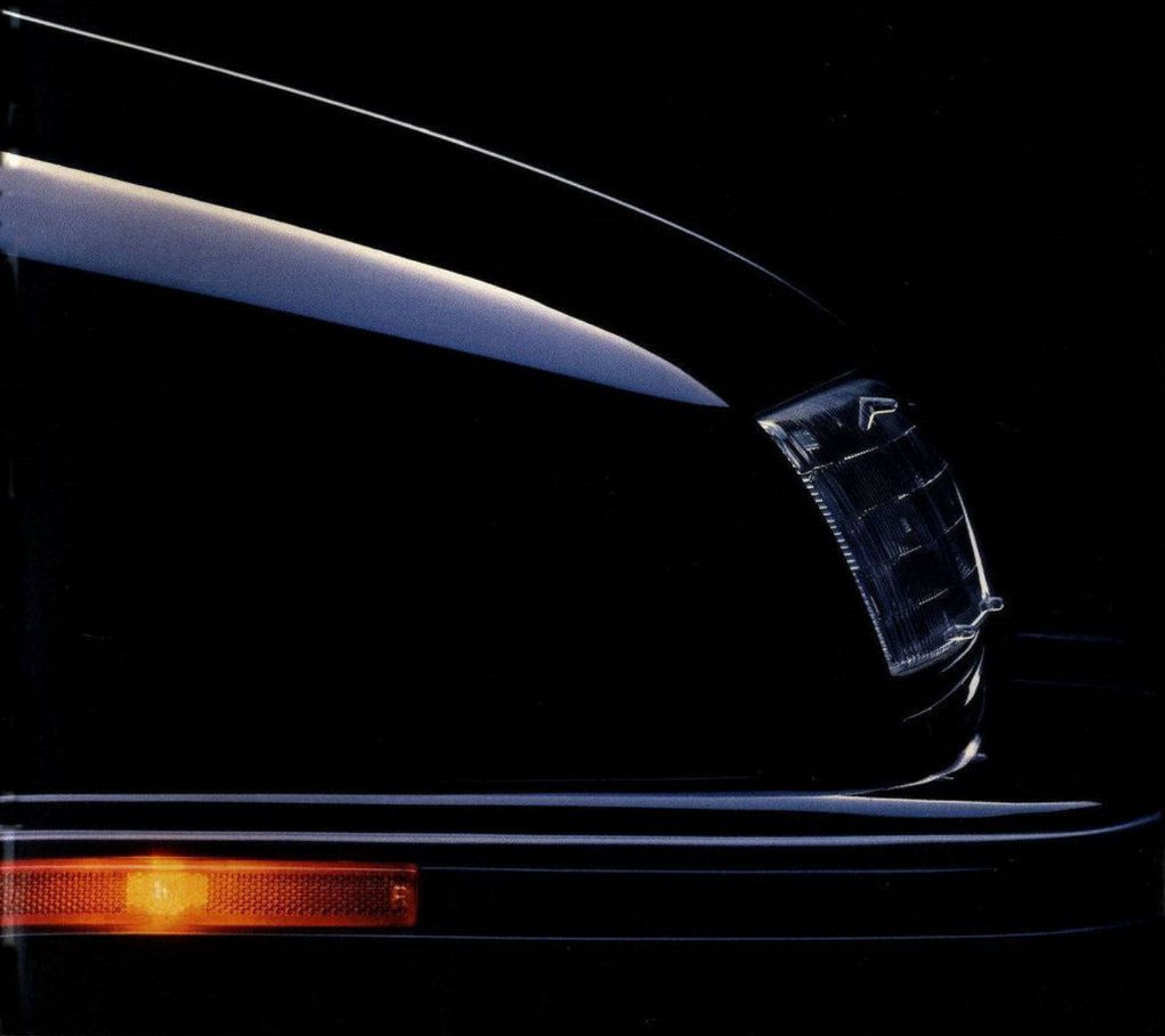


1989 CHEVROLET



THE HEARTBEAT OF AMERICA. TODAY'S CHEVROLET.™

You're about to discover a whole world of driving excitement, from our lowest-priced Cavalier to the legendary Corvette. Chevrolet® for 1989 offers a wider selection of models than any other automaker. Featuring advanced technology. Outstanding performance. And exceptional quality—exceptional because at Chevrolet, quality is more than a word. It's a way of life.

In every way, Chevrolet is committed to providing more than expected for your money. Maybe that's why more Americans drive Chevys than any other make.





22



12

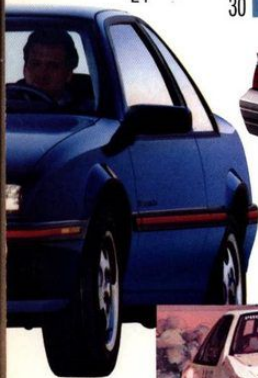


14



30

24



32



38



40

4 CAVALIER™
Coupe
Sedan
Wagon
Z24 Coupe
Z24 Convertible

12 DESIGN

14 CORSICA®
Sedan
LTZ Sedan

22 MANUFACTURING

24 BERETTA
Coupe
GT Coupe

30 TESTING

32 CAMARO®
RS Coupe
IROC-Z Coupe
IROC-Z Convertible

38 CORVETTE®

40 MOTORSPORTS



42



46



48



52



54



64

42 CELEBRITY™
Sedan
Eurosport Sedan

46 ADVANCED ENGINEERING

48 CAPRICE®
Classic Sedan
Brougham Sedan

52 SAFETY

54 SPECIALTIES
Cavalier/Celebrity/
Caprice Wagons
Astro® Van/Sportvan™
S-10 Blazer™
Suburban™/Full-Size
Blazer™

64 CUSTOMER SATISFACTION

66 WHEELS/RADIOS

68 STANDARDS AND OPTIONS

68 Cavalier
70 Corsica
71 Beretta
72 Camaro
73 Celebrity
75 Caprice

NOTE: For additional details on any 1989 Chevrolet featured in this brochure, see your Chevrolet dealer for a complete selection of brochures by vehicle line. They include • Cavalier • Beretta • Corsica • Camaro • Celebrity • Caprice • Corvette • Astro • Sportvan • S-10 Blazer • Suburban • Full-Size Blazer.

C

A

V

A

L

I

E

R



C A V A L I E R

A complete line of compact cars to fit your personal style or your family's style.

Whatever your wants and needs, look to Cavalier. There are high-style coupes (shown here), sedans, wagons and high-performance Z24 models.

At the upper right is the very contemporary (and very affordable) Cavalier Coupe with standard 2.0-liter engine with Electronic Fuel Injection and 5-speed manual transmission. Other

Cavalier RS Coupe.

standards include styled steel wheels, floor console with storage compartment and new 3-point rear shoulder safety belts at out-board seating positions.

The white coupe shown below has the RS option, accentuating Cavalier's spirited style and performance. RS equipment includes black-accented exterior trim, dual sport mirrors, larger 14" Touring tires on Rally Wheels, Sport Suspension, power steering and full instrumentation.

Now, that's fun... at an affordable Chevrolet price.



Cavalier Coupe with optional body-side moldings.



Cavalier RS instrument panel.



C A V A L I E R

Presenting an excellent example of innovation in packaging: Cavalier Sedan. This "compact" Chevrolet offers room for five people inside, but its trim exterior makes maneuvering and parking a breeze.

Cavalier is also one of the lowest-priced Chevrolet sedans, but it doesn't look or act like a traditional "economy" car. Features that set Cavalier apart include a smooth highway ride, a rakish hood line for an excellent view of the road, a carpeted 13.6-cu.-ft. trunk and an electronically tuned Delco AM/FM stereo sound system with digital clock.



Cavalier RS Sedan features a computer-tuned Sport Suspension.

Like all '89 Cavaliers, the sedan model also has an innovative SAF (Self-Aligning Feature) safety steering wheel. It's a brand new GM design, being introduced first on Cavalier. In the event of a crash, this special steering wheel automatically brings itself parallel to the chest of the driver to help prevent injuries. Cavalier Sedan for 1989: notable value and a proven performer.



Optional cloth interior trim in Blue.

Cavalier Sedan with optional 13" aluminum wheels and other options.

CAVALIER Z24

Cavalier Z24 is the hot one inspired by Corvette and Camaro. Choose from a very sleek coupe or a very cool convertible. Under that functional cowl-induction hood sits an exceptional engine, the 2.8 Liter V6 with Multi-Port Fuel Injection. Big displacement means big torque and HP numbers. You can feel the difference.

Z24 isn't just a straight-line performer, either. In the corners, you'll appreciate the quick-ratio power steering, the Eagle GT+4 all-season tires and the tuned-in Special Sport Suspension with gas-charged Delco shocks.

In the Z24 cockpit you'll find new, deeply contoured Sport Cloth bucket seats, a complete gage package with tach and one of the smoothest-shifting 5-speeds in Chevy history. New for '89 on Z24 Coupe: a standard split-folding rear seat offering convenient access to the trunk.



Optional electronic instrumentation.

Cavalier Z24 Convertible.



Cavalier Z24 Coupe.



Today's Chevrolet is designed in response to your wants and needs. It features world-class aerodynamic styling; smooth, reliable power; solid comfort engineering; and impressive structural integrity. Everything, in short, to create and sustain the feeling you're in one exceptional automobile.

1 The 43-ft.-diameter, computer-linked wind tunnel at GM's Aerodynamic Laboratory plays a major role in Chevrolet product design. The huge fan generates winds up to 150 MPH, and airflow across the surfaces of prototype cars allows engineers to evaluate Chevy designs for aerodynamic qualities.

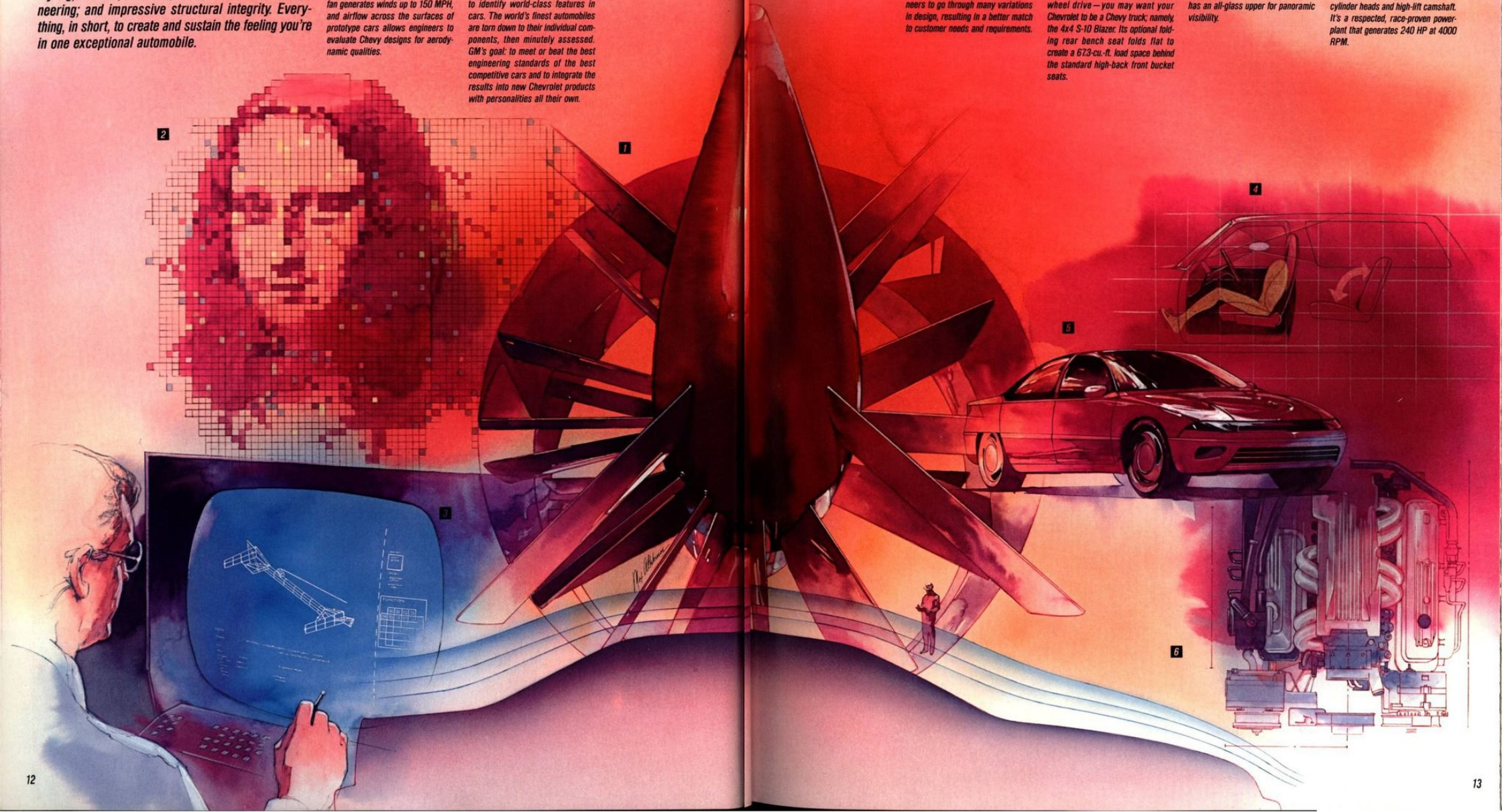
2 In the same way experts would evaluate a world-class portrait, General Motors engineers use a technique called "the Mona Lisa Process" to identify world-class features in cars. The world's finest automobiles are torn down to their individual components, then minutely assessed. GM's goal: to meet or beat the best engineering standards of the best competitive cars and to integrate the results into new Chevrolet products with personalities all their own.

3 Computer-aided design (CAD) of Chevrolet components and systems accelerates the development of designs. Computer power allows engineers to go through many variations in design, resulting in a better match to customer needs and requirements.

4 If you want your Chevrolet to demonstrate great versatility in people-carrying and cargo-hauling—and to have ground-grabbing four-wheel drive—you may want your Chevrolet to be a Chevy truck; namely, the 4x4 S-10 Blazer. Its optional folding rear bench seat folds flat to create a 67.3-cu.-ft. load space behind the standard high-back front bucket seats.

5 Unlike most "concept cars," the four-passenger Venture is a peek into the near future of sport sedans. Planned for '90s production, Venture has an all-glass upper for panoramic visibility.

6 Beneath Corvette's sleek clam-shell hood is design of a different sort: the legendary 5.7 Liter V8 with Tuned-Port Fuel Injection, aluminum cylinder heads and high-lift camshaft. It's a respected, race-proven powerplant that generates 240 HP at 4000 RPM.





**A new kind of sport sedan, with
world-class aerodynamics wrapped around
family-class roominess.**

In less than two model years, Corsica has become one of the best-selling sedans in the U.S.A.—due, in large part, to a lot of American families who knew exactly what they wanted.

In 1988, *Family Circle Magazine* named Corsica "Family Car of the Year for Families with Young Children." And we are especially pleased to report that, in an early buyer survey when Corsica was first introduced in 1987, 99 out of 100 owners said they would recommend this car to a friend.

Even if you choose a Corsica for its looks alone (a distinct possibility), you get so much more:

- Stretch-out comfort for five with passenger room rivaling many mid-size cars.
- A standard 2.0 Liter 4-cylinder engine with Electronic Fuel Injection.
- For even more power, an optional 2.8 Liter V6 with Multi-Port Fuel Injection.
- One of the most aerodynamic shapes in Chevrolet history.
- The best protection against corrosion in Chevrolet history.

For an even sportier expression of Corsica style, select the optional LT package, featuring black exterior trim highlights, styled wheels and Sport Suspension.



Corsica Sedan.

C O R S I C A

Corsica's sporty appeal continues when you slide inside. Here is a car designed to please the driving enthusiast without being a bit spartan about it. Orthopedically correct front bucket seats are fully reclining; the driver's side features an innovative four-way mechanical adjustment. An automatic safety belt system for the driver and front passenger is standard. In back, outboard seating positions feature manual lap/shoulder safety belts. Instrumentation includes large easy-to-read analog gages, with fingertip-control cluster pods for lights and wipers. A Delco AM/FM stereo with Seek and Scan and digital clock is standard.



Corsica Sedan interior.

Corsica's spacious interior environment may be further enhanced with the optional CL interior. This luxury package adds plush fabrics, deeply contoured seats, four-way mechanical adjusters for both front seats and much more.

With room for five, comfort for all and a sporty driving environment for you, Corsica is the new, more comfortable generation of sport sedans.

Optional CL Custom Cloth interior.



The new-for-'89 LTZ is a world-class driving machine with a big advantage over many so-called sport sedans: a standard 2.8 Liter V6 with Multi-Port Fuel Injection, delivering 130 willing horsepower. Transmission choices include the standard Getrag-licensed 5-speed manual or optional 3-speed automatic.

LTZ can handle a corner, too, with a Special Sport Suspension package. LTZ features include quick-ratio power steering, large-diameter rear stabilizer bar, higher-rate springs, new 15" aluminum wheels and P205/60R-15 Eagle GT+4 all-season performance tires.

Inside LTZ, the Corsica design team has created a performance-oriented driving environment. In addition to a CL Custom Cloth interior, the LTZ owner is treated to full instrumentation with tachometer, center console, a 60/40 split-folding rear seat with center armrest and auxiliary lighting with overhead console.

All things considered, you may find LTZ the most fun you've ever had with four doors.



LTZ's luxury interior includes a 60/40 split-folding rear seat that allows access to the trunk.



A new concept called Team Chevrolet is alive and working wherever Chevrolets are built, to ensure these products are of the highest possible quality. People from all disciplines of manufacturing have come together to apply high technology and a high order of organization to product build. As a result, the Team Chevrolet approach has measurably improved the processes and techniques of manufacture, assembly and inspection.

1 The people who assemble new Chevrolets—everybody from line workers to top supervisors—are a closely knit team with a collective responsibility for, and an understanding of, the finished product. They meet regularly with design and manufacturing engineers at the point of assembly to ensure a high level of manufacturing quality.

2 Machine operators and skilled tradespeople on assembly lines are highly trained in SPC (Statistical Process Control) procedures. They use computers to monitor and adjust manufacturing equipment for exacting quality.

3 Quality auditors inspect hundreds of items on randomly selected Chevrolets from the assembly line and provide feedback on the effectiveness of the assembly process. Each audit takes several hours and includes a road test.

4 AGVs (Automated Guided Vehicles) are computer-directed, motorized platforms that carry car bodies from workstation to workstation along the assembly line. They move forward only when commanded by workers to do so.

5 All suppliers of materials that go into a new Chevrolet must meet high standards of quality, and they are required to continuously upgrade the quality of the materials and service parts they deliver.





B E R E T T A

A new approach to coupe design, for a new approach to going places.

So new, that Beretta has already won top honors from the Industrial Designers Society of America: the 1987 Industrial Design Excellence Award. Beretta is a redefinition of America's personal coupe: one of the sleekest shapes in sheet-metal history. Sophisticated front-drive technology provides ample interior room (the back seat offers you bona fide room for three) within this most personal automobile.

Beretta's spirited driving attitude begins with a 2.0-liter 4-cylinder engine with Electronic Fuel Injection (for an even more spirited attitude, select the optional 2.8 Liter V6). On the highway, Beretta is a beautifully balanced performer, thanks to a standard sport suspension, new P195/70R-14 all-season performance Touring tires and power rack-and-pinion steering.

And for 1989, Beretta will be presenting an even more enthusiastic profile with new blackout exterior trim and standard styled steel wheels.



The Beretta interior features sporty bucket seats and center console.



Beretta Coupe.

We didn't put the "GT" designation on this Beretta simply for effect. Ordering the performance version of Beretta assures you of all the following:

- 2.8 Liter V6 with Multi-Port Fuel Injection.
- Getrag-licensed 5-speed manual transmission.
- Standard air conditioning.
- Beretta's top suspension upgrade, with a stiffer rear stabilizer bar and specific spring rates.
- 15" styled steel wheels and P205/60R-15 Eagle GT+4 all-season tires.
- Gloss-black exterior trim with red accents.
- Special Beretta GT identification.
- Exclusive Custom Cloth interior with 60/40 split-folding rear seat with armrest and sport steering wheel.



Beretta GT's exclusive Custom Cloth interior.

Beretta GTU

The limited-production Beretta GTU is the look-alike of the specially modified racing Beretta that competes on the International Motorsports Association racing circuit. See your dealer for details.



Beretta GTU.

Beretta GT Coupe.

Chevrolet prototypes get the industry's most exhaustive testing at the various GM Proving Grounds: 100,000-mile durability runs in nasty Michigan winters and Arizona desert summers; cold engine starts at -62°F in northern Canada; high-altitude drivability checks in the Colorado Rockies; long-term torture of individual parts and components; and much more. All with the goal of eliminating any design or manufacturing problems in your Chevy, before it's built.

1 Development engineers use state-of-the-art testing and monitoring instrumentation to help them fine-tune a new Chevrolet's ride and handling. Prototypes are evaluated for stiffness and configuration of the body and frame, steering geometry, spring rates, wheel and tire design and other design considerations.

2 The design, development and testing of tire-wheel combinations include dynamometer testing under all loading conditions.

3 Prototypes of new Chevrolet models are placed in a special chamber and bombarded by a wide range of electromagnetic frequencies to help ensure that their on-board computers can function problem-free.

4 Since originating the automotive proving ground in 1924, GM has gone on to develop the world's most extensive network of proving grounds. Just about every road condition that can be found in North America has been duplicated at these facilities: punishing "Belgian blocks" (shown), super highways, dirt roads, banked test tracks, powdery sand, soupy mud, hairpin curves, extreme grades, and more. Chevrolet's face a variety of durability runs in all these test settings.

5 Professional drivers at GM test tracks perform high-speed tests to evaluate the performance and durability of tires on new Chevrolets. To ensure vehicle control when a test tire blows out, test vehicles are equipped with three racing tires and one test tire.

6 Computer simulations and structural analysis combine with road testing to provide information important to future vehicle development.







C A M A R O

The 2+2 legend that can make you look good, even when it's standing still.

There is absolutely nothing base about the 1989 base Camaro. The new RS (Rally Sport) makes a bold design statement withIROC-inspired body-color lower aero panels, new P215/65R-15 all-season performance Touring tires on Z28-style cast-aluminum wheels, rear spoiler and special "RS" identification.

The RS also delivers bold performance—with standard sport suspension, quick-ratio power steering, gage package with tachometer and 5-speed manual transmission. A 2.8 Liter V6 with Multi-Port Fuel Injection is standard. A 5.0 Liter V8 with Electronic Fuel Injection is optional. Other standard features include a retuned suspension and new rear lap/shoulder safety belts. For 1989, Camaro also offers the Delco PASS-Key™ (Personal Automotive Security System) theft-deterrent system as standard equipment.

New Camaro RS: classic Camaro performance and styling in one practical package.

The core of the sophisticated PASS-Key system is a special module with a resistor decoder and an ignition key with a pellet of specified resistance. Other equipment includes a special starter relay and lock cylinder.

When the key is placed in the ignition, lock cylinder contacts "interrogate" the resistance. The PASS-Key module then decodes the key and, if compatible, closes the starter relay, which in turn allows the car to be started.



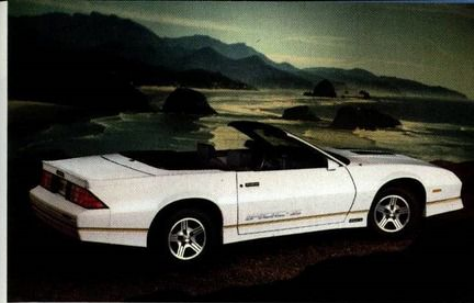
Camaro RS interior.

CAMARO IROC-Z

The instant you turn the key you'll feel the thunder. And know you're into something good. A 5.0 Liter V8 with EFI is standard; a 5.0 Liter with Tuned-Port Fuel Injection is optional. But IROC's big gun is the mighty 5.7 Liter V8 with TPI. This year's 5.7 is available with a new low-restriction exhaust that boosts HP to 240 at 4400 RPM. Torque is a staggering 345 ft.-lbs. at 3200 RPM.

IROC-Z's competition-proven suspension comes alive when the road turns twisty. Fast-ratio power steering, larger stabilizer bars front and rear and grippy 15" Eagle GT tires on newly styled wheels are all part of the package. As is Camaro's new Delco PASS-Key™ theft-deterrent system. IROC-Z for 1989. It'll make your heart sing.

Camaro IROC-Z Coupe with optional 16" aluminum wheels and Eagle unidirectional tires.



Camaro IROC-Z Convertible. See your dealer for details.



IROC-Z Custom Interior with optional leather seating surfaces.

C

O

R

V

E

T

T

E



Hands down, the most convincing way to prove Chevrolet a winner is to win races. Chevy has been a dominant force in American motorsports since 1955, when our small-block V8 first powered Chevrolets past checkered flags in impressive numbers. Specially modified Chevrolets won more races than any other nameplate last year. CART, SCORE, IMSA, SCCA, NHRA, ARCA, ASA, ARTGO...everything from NASCAR to Showroom Stock. Chevy Indy V8 engines powered the winner and 2nd and 3rd place finishers at the 1988 Indianapolis 500. And you won too, because the technology we test and prove at 200 MPH is applied to the Chevys you drive at street-legal speeds.

1 The Cars & Concepts Chevy Beretta GTU race cars driven by Tommy Kendall and Max Jones were competitive right out of the box in the 1988 International Motor Sports Association road racing series. The special Berettas took on all comers and won three of the first four races they entered, clearly establishing themselves as the ones to beat.

2 After winning the SCCA Escort Endurance Championship three years running, the Chevrolet Corvette has established that there is no real competition for one of the world's finest production sports cars. So, 1988 ushered in the SCCA Corvette Challenge: 50 world-class drivers with identical Corvettes in a 10-race series. The series will feature identical stock Z51 Corvettes equipped with safety modifications necessary for racing.

3 Corvette IMSA GTP is the premier racing sports car of America, providing some of the fastest, most exciting racing ever. This custom-built, mid-engined car features a supremely aerodynamic body and exotic technology.

4 A specially prepared Chevy Beretta driven by Bruce Allen buried the competition in two of the first five national meets on the 1988 National Hot Rod Association circuit. The Pro Stock Beretta drag racer first won the Gatornationals in Florida, then followed up with a win at the Cajun Nationals in Louisiana. The domination was complete: Allen also set the high speed mark for the Pro Stock class in each NHRA event.

5 IROC (the International Race of Champions) provides 12 identically prepared racing Camaros for the 12 fastest drivers from CART, NASCAR and IMSA road racing—and turns them loose every year in this winner-take-all.

6 On the NASCAR racing circuit, more stock cars have been powered by the Chevrolet small-block V8 than any other engine in this decade. And for the last five years running, Chevrolet Motor Division has captured the NASCAR Winston Cup Manufacturer's Championship.



C

E

L

E

B

R

I

T

Y



The six-passenger, front-wheel-drive value that has become a family tradition.

Celebrity is well-known for its six-passenger "family-size," contemporary front-drive technology, generous complement of standard equipment and eminently affordable base price.

The 1989 Celebrity continues to feature a beautifully smooth ride and a standard 2.5-liter Tech IV engine with EFI. A 2.8 Liter V6 with Multi-Port Fuel Injection is optional.

Standard equipment on every 1989 Celebrity includes power steering, power front disc/rear drum brakes, 3-speed automatic transmission and Delco AM/FM stereo with digital clock. New rear lap/shoulder safety belts are standard for outboard seating positions.

The popular Eurosport package transforms Celebrity into a sport sedan—at an affordable price. It includes a performance-tuned suspension, quick-ratio power steering, larger P195-75R-14 all-season radial tires, blackout exterior trim with red-accent striping, Rally Wheels with trim rings, padded sport steering wheel and special identification.



Celebrity's interior seats six in comfort.



A D V A N C E D E N G I N E E R I N G

The role of our engineers is to make things that work in new ways, or to make existing things work better. These professionals apply a broad definition of the word "performance," to include everything a Chevrolet can do for its driver and passengers. Seen in this way, performance improvements can range from lighter-weight, higher-horsepower engines to more supportive seats or more functional windshield wipers. That's advanced engineering.

1 The transverse 2.8 Liter V6 with Multi-Port Fuel Injection is standard or optional in a number of 1989 Chevrolets. Features include aluminum cylinder heads, a serpentine drive belt that never needs adjustment, and a distributorless coil ignition system that eliminates the need for periodic timing adjustments.

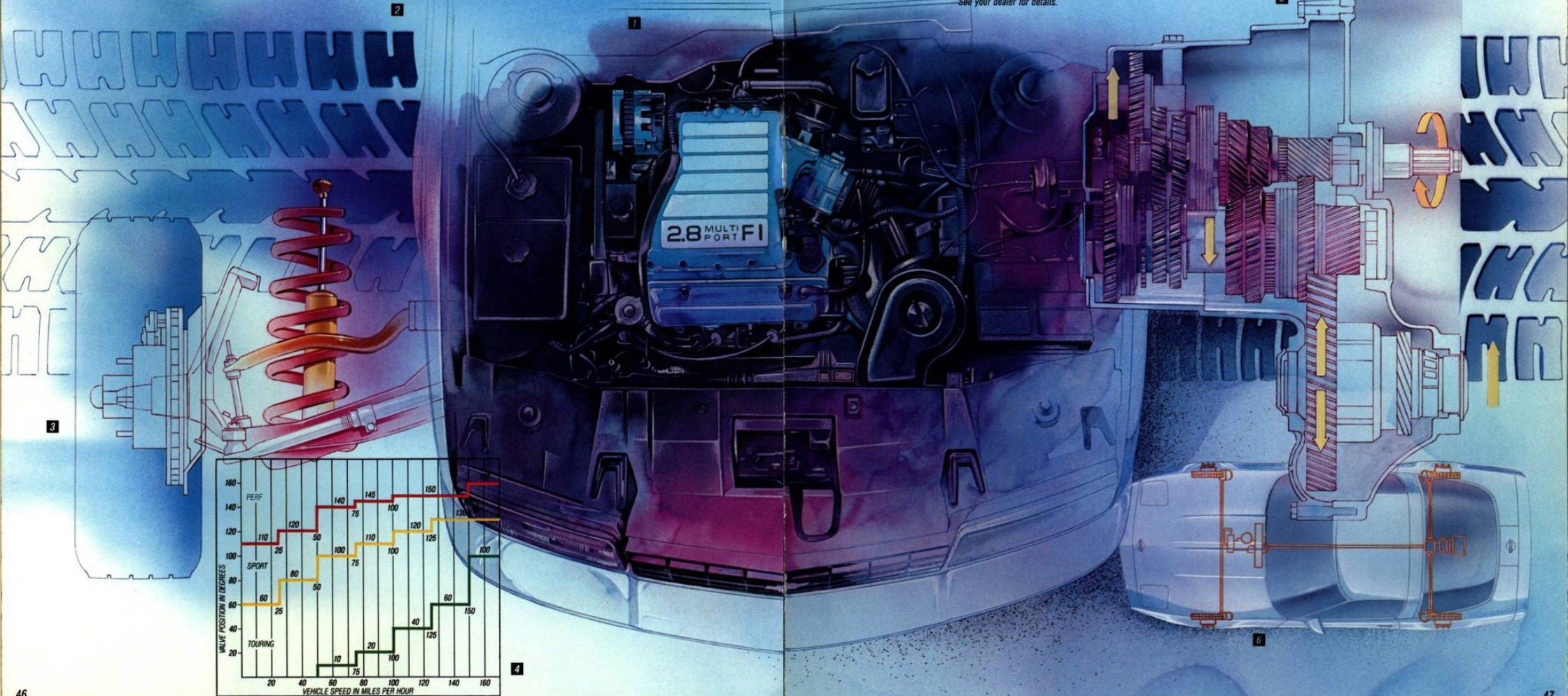
2 The unidirectional tire, developed jointly by Chevrolet and Goodyear for Corvette and Camaro, is designed to have a preferred rolling direction. Heat buildup is minimized, extending tire life and high-speed capability. This tire is a direct spin-off from Formula 1 tire technology.

3 The ride of a Chevrolet Caprice Sedan, long renowned as one of the best in the industry, is made even smoother in '89. An improved ride package includes revalved shock absorbers, new body mounts, transmission mounts and crossmember, and revised tire pressures.

4 The '89 Corvette offers a console-mounted "Selective Ride Control" option which allows the driver to choose one of three system settings: Touring, Sport or Perf. — each with distinctly different ride and handling characteristics. In each mode, several "fine-tuned" adjustments are made, for a total of nine valving conditions. An automatic override defaults the system to firmer settings as speed increases. Selective Ride Control is not available at start of production. See your dealer for details.

5 A Getrag-licensed high-torque-capacity 5-speed manual transmission is standard on many Chevrolet front-wheel-drive performance cars. This constant-mesh transaxle is efficiently packaged for use with transverse engines and features a low noise level and smooth, effortless shifting.

6 The Bosch ABS II anti-lock braking system developed for Corvette is a computer-controlled, four-wheel system which helps keep wheels from locking up and develops the highest deceleration rates possible under low coefficient of friction surface conditions.



C

A

P

R

I

C

E



The classic, uncompromised, unmistakably full-size Chevrolet.

Chevrolet Caprice, one of America's most distinctive automobiles, retains its uncompromised size and style for 1989. Every Caprice features standard V8 power, Full Coil suspension, full-frame construction and a proven rear-drive design. And when it's traveling time, a huge 20.9 cu.-ft. trunk (with new optional cargo net restraint) is ready when you are.

Caprice Classic Brougham

This exclusive automobile features a sumptuous cloth interior with contoured pillow-type seating (genuine leather seating surfaces are optional), front and rear seat center armrests, plush 20-oz. cut-pile carpeting and auxiliary lighting. A color-keyed vinyl roof covering is standard.

Caprice Classic Brougham LS

Chevrolet's finest sedan has every Brougham luxury, plus a padded landau-style rear roof treatment, center pillar opera lamps and LS monograms. And like every 1989 Caprice sedan, the Brougham LS features a standard 5.0 Liter V8 with Electronic Fuel Injection for smooth performance and excellent drivability.



The highly affordable Caprice Classic features luxurious new interior fabrics.



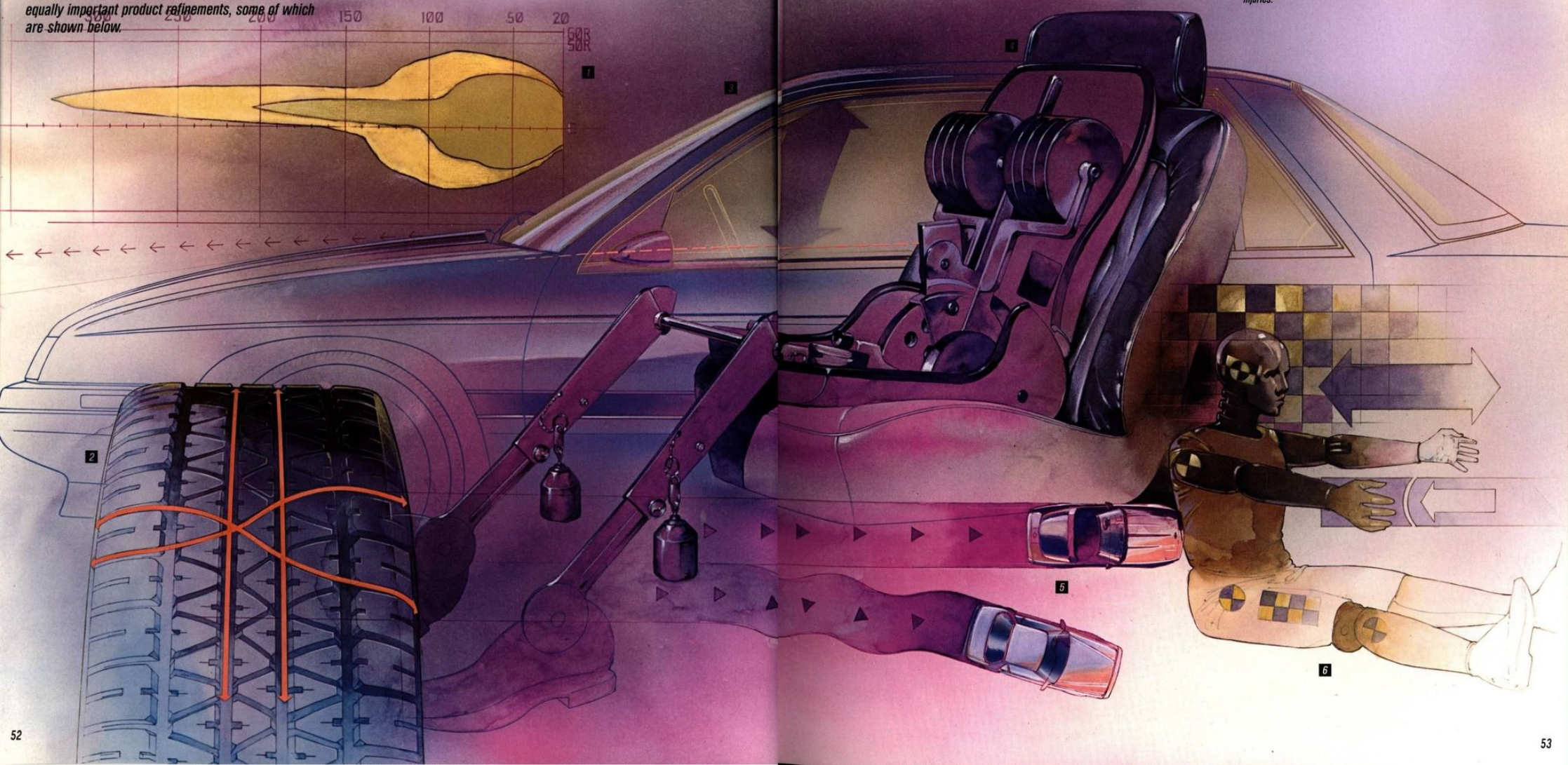
Caprice Classic Sedan with Custom wheel covers and other options.

Caprice Classic Brougham LS Sedan with wire wheel covers, cornering lamps and other options.



While engineering safety into its cars and trucks, Chevrolet uses the vast resources of its parent company, General Motors. GM leads the world in automotive safety research, and has pioneered in the extensive destructive testing that makes each Chevrolet highly "crashworthy" by design. But safety engineering goes far beyond crash dummies and barrier tests. It includes far more subtle but equally important product refinements, some of which are shown below.

- 1 The halogen headlamps designed and developed by Fisher Guide Division of General Motors for Chevrolet are among the best in the world. Standard equipment on many Chevy models, these headlamps project light further down the road and illuminate objects at greater distances.
- 2 Chevrolet and Goodyear teamed up to develop the Goodyear Eagle GT+4 all-season high-performance tire. It has the same impressive dry-pavement characteristics as the regular Eagle GT, plus superior traction in rain and snow.
- 3 A lower front end and lower side windows on many Chevrolet models contribute to excellent visibility for the driver—a safety plus, both in traffic and when parking.
- 4 Meet "Oscar III," an ergonomics dummy who is instrumental in helping engineers develop car interiors that contribute to safe driving. With his help, Chevrolet seating is designed to accommodate an impressive range of human sizes and shapes.
- 5 Four-wheel anti-lock brakes, standard on Corvette, allow driver to retain maneuverability under full braking. Rear-wheel anti-lock brakes are standard on Chevrolet Pickups, Astro Vans and S-10 Blazers.
- 6 "Hybrid III" is one of the best crash dummies in the business—a surrogate human with sensors installed at many critical points which transmit biomechanical data to laboratory measuring instruments during a vehicle crash test. Engineers use such data to design interiors, structural components and passenger-restraint systems that help reduce occupant injuries.





W A G O N S

Pick an American original: fold-down rear seats, big cargo spaces and room for five, six or eight people.

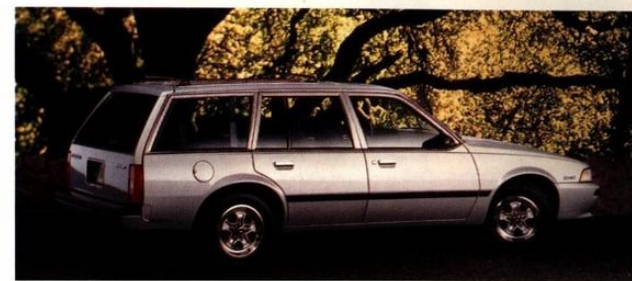
When it comes to wagons, nobody offers more choices than Chevy. For '89, select from three distinct sizes. The compact Cavalier Wagon offers seating for five and up to 64.4 cu. ft. of cargo space. New for '89: the RS Sport package. Also optional: the 2.8 Liter V6 with Multi-Port Fuel Injection.

The mid-size Celebrity Wagon has some real full-size capabilities. This front-drive wagon lets you choose from a standard 2.5 Liter four with EFI, or an optional 2.8 Liter V6, seating for six or optional seating for eight. Cargo capacity is a big 75.1 cu. ft. with rear seats folded flat.

The full-size Caprice Classic is America's best-selling full-size wagon. Wagon fanciers keep coming back to Caprice Classic for its luxurious trim, comfortable seating for eight, smooth V8 power and unmatched highway ride. Cargo capacity is 87 cu. ft. with both rear seats folded flat.



Caprice Classic Estate Wagon with optional roof carrier and wire wheel covers.



Cavalier Wagon with optional roof carrier and other options.

Celebrity Eurosport Wagon with optional roof carrier.



V A N S

***Some call them "trucks," some call them "cars."
Everybody's right, because they're Chevy vans.***

Astro, shown below, is "the van that can." It's a compact van big enough for family fun but small enough to park in tight spaces. Choose from available seating plans for up to eight. Astro also has substantial towing power: A properly equipped Astro with standard 4.3 Liter Vortec V6, optional automatic transmission and other required options can tow up to 6,000 lbs., including

passengers and cargo. There are also over 151 cu. ft. of cargo space with the rear seats removed.

New features for 1989 include an optional Astro Sport Appearance package with louvered rear quarter panels and air dam with integrated driving lamps. The '89 Astro also has a standard rear-wheel anti-lock braking system to help control rear-wheel lockup during high-deceleration braking.

If you need more van, there's always Sportvan, shown right. This tried-and-true full-size van offers a choice of two wheelbases, gas or diesel power and optional seating for up to 12.



Sportvan.

Astro CL.

S - 1 0 B L A Z E R

America's most popular sport utility, in your choice of two- or four-wheel drive.

It's a high-style 2WD personal car. Or a rugged 4x4 truck with Chevy's patented shift-on-the-fly Insta-Trac. And with the optional 4.3 Liter V6 pumping out 160 HP it's got impressive muscle for pulling mountain grades or accelerating in the flats. What's more, a properly equipped S-10 Blazer can tow up to 6,000 lbs., including trailer, passengers and cargo.

S-10 Blazer comes standard with high-back front bucket seats (a two-passenger folding rear bench seat is available), plus a standard rear-wheel anti-lock braking system* to help control rear-wheel lockup during high-deceleration braking.

S-10 Blazer can be nicely outfitted to suit your personal style, thanks to a wide selection of trim levels, optional wheels, Custom paint schemes, heavy-duty off-road packages and other options. The High Country option package, shown here, is expressly for people who want to revel in 4x4 S-10 Blazer style and luxury. Its exterior appointments include Midnight Black/Nevada Gold Custom Two-Tone paint, graded-color body-side decals and special gold-tone aluminum wheels. Interior comforts include reclining front bucket seats and deep-tinted glass (with light-tinted rear window). The High Country package requires these additional options: Tahoe or Sport trim, a Saddle interior and white-lettered tires.

*Operates in 2WD only.



4x4 S-10 Blazer interior in Saddle with High Country option package, optional rear seat and optional leather inserts in all seating surfaces.

4x4 S-10 Blazer with optional High Country package.



Not just another sleek, well-appointed limousine.

There's nothing else quite like Suburban. It's the stylish Chevy superwagon that can carry twice as much cargo and tow much more than any car-type wagon. (A properly equipped 3/4-ton 2500 Series Suburban can move up to 16,000 lbs., including vehicle, trailer, passengers, cargo and equipment.)

For 1989, Suburban gets a fresh new appearance with a boldly styled front end, lustrous base-coat/clear-coat paint and new Two-Tone paint schemes.

Suburban continues to offer available seating for up to nine, a choice of V8 engines (including a standard 5.7-Liter gasoline V8, 6.2-Liter diesel and an optional 7.4-Liter gas V8), 2WD or 4x4 models and a huge array of optional equipment.

Luxury lovers will find the up-level 1989 Silverado package even more refined, with finer fabrics and an improved ride. Suburban. It's Chevrolet's answer to those who want a luxury car...with capabilities no luxury car can match.



Suburban interior with optional Silverado trim and optional seating for eight.

Full-Size Blazer

Blazer owners continually tell us they love their truck—especially its looks, its fuel-injected V8 power and the go-anywhere nature of this beast. So we don't rework it, we refine it.

For 1989, America's original full-size sport utility 4x4 gets sporty new front-end styling, base-coat/clear-coat paint and improved corrosion protection.



Full-Size Blazer with optional Silverado trim.

K1500 4x4 Suburban with optional Silverado trim.



C U S T O M E R S A T I S F A C T I O N

All Chevy dealers are totally dedicated to it. They take full responsibility for introducing you to your new Chevrolet, ensuring your satisfaction with the way it's delivered, and your long-term satisfaction with dealership service after the sale.

To accomplish all this requires highly trained personnel, modern equipment and systems, great attention to detail and a willingness to give top priority to your needs. Your next visit to a Chevy dealership will show you how hard that Chevy dealer works to make you happy—and keep you that way.



2

1 Chevy dealership service technicians have extensive training programs available in the use of high-tech diagnostic and repair equipment. A growing number of Chevy dealerships use equipment like this hand-held Tech I microprocessor for engine analysis, and such electronic troubleshooting is bringing a new level of speed and accuracy to their service days.

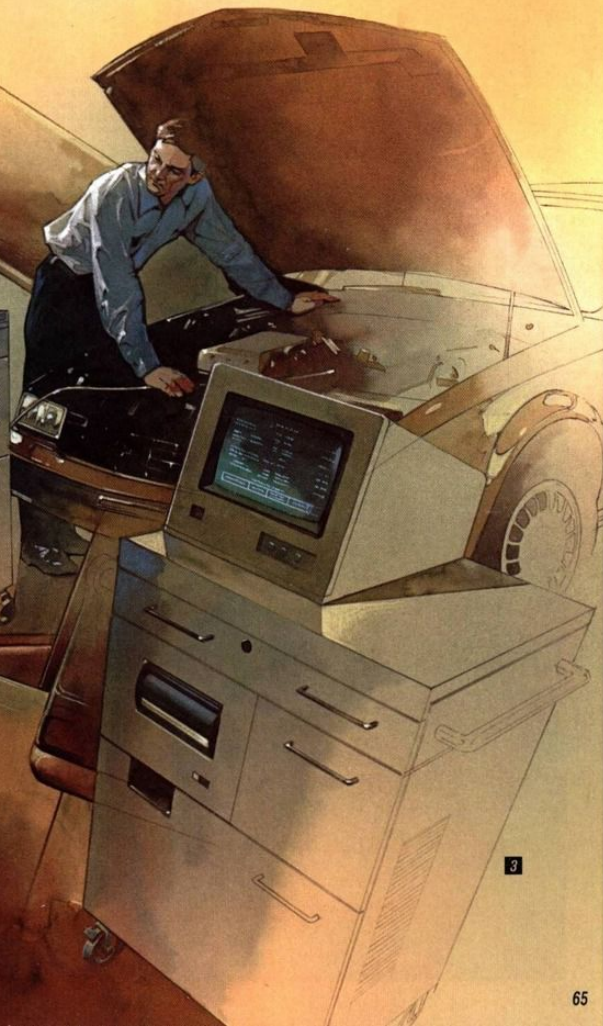
2 Your Chevy dealer is committed to making your purchase of a new Chevrolet a totally positive experience. Chevy dealership salespeople will introduce you to the Chevy of your choice, explain all warranties and maintenance schedules, accompany you on an orientation drive, and go over an extensive checklist with you when your new car is delivered. You will also receive a follow-up questionnaire by mail to measure your satisfaction with the dealership and the personnel who served you.

3 Many Chevy dealership service departments have GM-CAMS (Computerized Automotive Maintenance System), an advanced vehicle service system which provides dealerships with the latest vehicle diagnostics, repair and maintenance information available. GM-CAMS assists technicians in diagnosing many vehicle powertrain, brake and suspension components and allows retesting of the vehicle systems once repairs are completed.

4 Chevrolet's Customer Assistance Center (CAC) has a special, toll-free 800 number. It puts you in contact with Chevrolet experts who can handle any product/service question or problem you may have. Call 1-800-222-1020, Monday through Friday, 8:00 a.m. to 7:30 p.m., Eastern Standard Time.



1



3

W H E E L S

Optional wheels add a high-style touch to any new Chevrolet. Shown below are some of the standard and optional wheels available.



Cavalier
Optional 13" aluminum wheel.



Cavalier RS
Standard 14" Rally Wheel.



Cavalier Z24
Standard 14" aluminum wheel.*



Corsica LT
Standard 14" styled steel wheel.



Corsica and Corsica LT
Optional 14" aluminum wheel.



Corsica LTZ
Standard 15" aluminum wheel.*



Beretta
Standard 14" styled steel wheel.



Beretta GT
Standard 15" styled steel wheel.*



Beretta GT
Optional 15" aluminum wheel.*



Camaro RS
Standard 15" aluminum wheel.



Camaro IROC-Z
Optional 16" aluminum wheel.*



Celebrity Eurosport
Standard 14" Rally Wheel.



Celebrity Eurosport
Optional 14" aluminum wheel.



Caprice Classic
Optional 15" wire wheel cover.



Corvette
Standard 17" aluminum wheel.*

*Tire chains should not be used because they could cause damage to this vehicle.

SOUND SYSTEMS

Delco music systems, among the most advanced in the world, are designed specifically for the acoustics of your new Chevrolet.

1 Delco AM/FM Stereo Radio with Electronic Tuning, Seek and Scan, and Digital Clock. Standard on Cavalier (except VL Coupe), Corsica, Beretta, Camaro, Celebrity and Caprice.

2 Delco AM/FM Stereo Radio with Electronic Tuning, Seek and Scan, Digital Clock and Stereo Cassette Player. Optional on Cavalier, Corsica, Beretta, Camaro, Celebrity and Caprice. Standard on Corvette.

3 Delco AM Stereo*/FM Stereo Radio with Electronic Tuning, Seek and Scan, Digital Clock and Stereo Cassette Player. Optional on Camaro, Caprice, Corsica and Beretta. AM Stereo not included on Caprice.

4 Delco/Bose AM/FM Stereo Radio with Electronic Tuning, Seek and Scan, Digital Clock, Stereo Cassette Player. Optional on Camaro and Corvette.

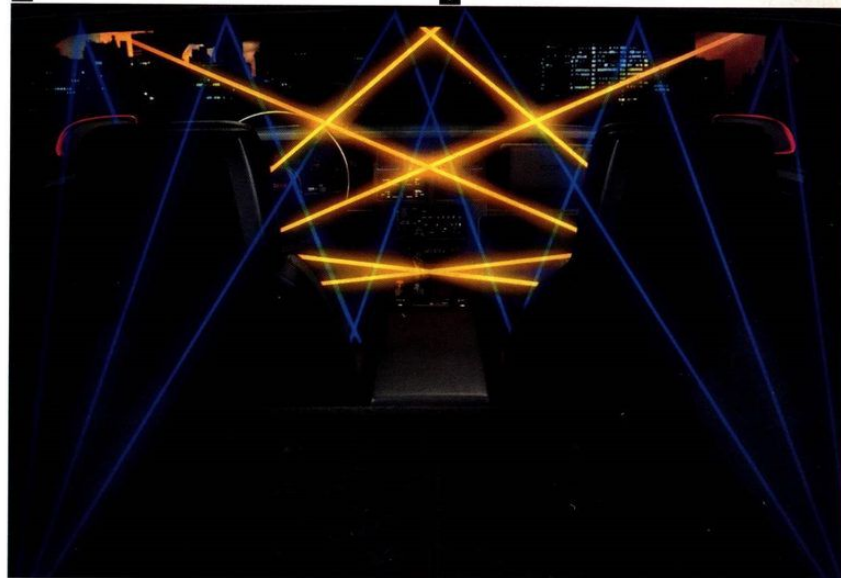


The optional Delco/Bose Music System is precisely tuned to the interior environment of Camaro and Corvette.

The componentry includes a receiver and four bass reflex amplifier/speaker enclosures engineered specifically for window placement, angle and density of glass, seating position and cockpit configuration. Even the textural composition of the upholstery and carpeting was considered. Each speaker has its own built-in equalizer network.

Other features of the system include: AM/FM Stereo reception with automatic adjustment circuits that adjust reception, ensuring maximum sensitivity to weak stations without danger of overload on strong signals, electronic tuning with Seek and Scan features, Dynamic Noise Reduction (DNR™) and Dolby® Sound Noise Reduction. The integral tape player includes auto-reverse and music search features.

*Receives C-Quam™ AM stereo broadcasts. Most AM stations across the country broadcast in C-Quam but some do not. Check with your local stations for compatibility in your area.



PREFERRED EQUIPMENT GROUPS

Most 1989 Chevrolets feature optional Preferred Equipment Groups that help simplify the buying process. Choose one with the equipment you desire, then select from the accompanying list of individual options. Some restrictions apply. See your dealer for details.

Cavalier Series Standard Features

- AM/FM stereo sound system with Seek and Scan and digital clock (except Cavalier VL Coupe)
- Audible front disc brake wear sensors
- Carpeted trunk/load floor
- Cigarette lighter and ashtray light (except Cavalier VL Coupe)
- Composite halogen headlamps
- Easy-entry passenger seat on 2-door models (except Cavalier VL Coupe)
- Engine compartment hood insulator pad
- Extensive anti-corrosion protection
- 5-speed manual transmission
- Floor console with storage and coin holder
- Front drive
- Full interior carpeting
- Headlamps-on reminder buzzer (except Cavalier VL Coupe)
- Glove box lock (except Cavalier VL Coupe)
- P185/80R-13 blackwall all-season steel-belted radial ply tires
- Power ventilation system
- Rack-and-pinion steering
- Reclining bucket seats
- Safety steering wheel
- Side window defoggers
- Styled steel wheels
- 2.0 Liter L4 engine with EFI.

Cavalier RS Equipment

- In addition to or replacing standard Cavalier equipment:
- Blackout exterior trim
 - Body-side moldings
 - Dual sport mirrors, left-hand remote
 - Gage package with tachometer
 - Power steering
 - Sport instrument panel with "cluster" control pods
 - Sport suspension
 - 14" styled steel wheels
 - P195/70R-14 all-season steel-belted radial tires.

Cavalier Z24 Standard Features

- In addition to or replacing standard Cavalier or RS equipment:
- Custom Sport Cloth interior with split-folding rear seat
 - Full console with cassette tape storage
 - 14" cast-aluminum wheels
 - P215/60R-14 Goodyear Eagle GT+4 tires*
 - Specific exterior styling with cowl-induction hood, sport front fascia with air dam, wide rocker panel extensions and 14" cast-aluminum wheels
 - 2.8 Liter V6 with Multi-Port Fuel Injection.

*Tire chains should not be used on Cavaliers equipped with P215/60R-14 tires because they may cause damage to this vehicle.

PREFERRED EQUIPMENT GROUPS: CAVALIER COUPE/SEDAN/WAGON

	1	2	3	4
Equipment Group 1				
Auxiliary Lighting	•	•	•	•
Heavy-Duty Battery	•	•	•	•
Power Steering	•	•	•	•

Equipment Group 2				
Body-Side Moldings		•	•	•
Carpeted Front and Rear Floor Mats		•	•	•
Dual Sport Mirrors, Left-Hand Remote		•	•	•
Tinted Glass		•	•	•

Equipment Group 3				
Air Conditioning			•	•
Comfortilt Steering Wheel			•	•
Electronic Speed Control			•	•
Intermittent Wipers			•	•
Roof Carrier (Wagon Only)			•	•

Equipment Group 4				
Power Door Locks			•	•
Power Windows			•	•
Radio Equipment: Electronically Tuned AM/FM Stereo Radio with Seek and Scan, Stereo Cassette Tape Player, Extended Range Sound System and Digital Clock			•	•

PREFERRED EQUIPMENT GROUPS: CAVALIER RS COUPE/SEDAN/WAGON

	1	2	3
Equipment Group 1			
Auxiliary Lighting	•	•	•
Carpeted Front and Rear Floor Mats	•	•	•
Heavy-Duty Battery	•	•	•
Tinted Glass	•	•	•

Equipment Group 2			
Air Conditioning	•	•	•
Comfortilt Steering Wheel	•	•	•
Electronic Speed Control with Resume Speed	•	•	•
Intermittent Wipers	•	•	•

Equipment Group 3			
Deck-Lid Carrier (Coupe Only)	•	•	•
Power Door Locks	•	•	•
Power Trunk Opener (Coupe/Sedan)	•	•	•
Power Windows	•	•	•
Radio Equipment: Electronically Tuned AM/FM Stereo Radio with Seek and Scan, Stereo Cassette Tape Player, Extended Range Sound System and Digital Clock	•	•	•
Roof Carrier, Black (Wagon Only)	•	•	•

PREFERRED EQUIPMENT GROUPS: CAVALIER Z24 CONVERTIBLE

	1	2
Equipment Group 1		
Air Conditioning	•	•
Auxiliary Lighting	•	•
Heavy-Duty Battery	•	•
Radio Equipment: Delco Electronically Tuned AM/FM Stereo with Seek and Scan, Stereo Cassette Tape Player, Extended Range Sound System and Digital Clock	•	•

Equipment Group 2		
Carpeted Front and Rear Floor Mats	•	•
Comfortilt Steering Wheel	•	•
Electronic Speed Control with Resume Speed	•	•
Intermittent Wipers	•	•
Power Trunk Opener	•	•
Radio Equipment: Delco Electronically Tuned AM Stereo*/FM Stereo with Seek and Scan, Stereo Cassette Tape Player with Search and Repeat, Graphic Equalizer, Extended Range Sound System and Digital Clock	•	•

PREFERRED EQUIPMENT GROUPS: CAVALIER Z24 COUPE

	1	2	3
Equipment Group 1			
Air Conditioning	•	•	•
Auxiliary Lighting	•	•	•
Heavy-Duty Battery	•	•	•
Tinted Glass	•	•	•

Equipment Group 2			
Carpeted Front and Rear Floor Mats	•	•	•
Comfortilt Steering Wheel	•	•	•
Electronic Speed Control with Resume Speed	•	•	•
Intermittent Wipers	•	•	•
Radio Equipment: Delco Electronically Tuned AM/FM Stereo Radio with Seek and Scan, Stereo Cassette Tape Player, Extended Range Sound System and Digital Clock	•	•	•

Equipment Group 3			
Power Door Locks	•	•	•
Power Trunk Opener	•	•	•
Power Windows	•	•	•
Radio Equipment: Delco Electronically Tuned AM Stereo*/FM Stereo Radio with Seek and Scan, Stereo Cassette Tape Player with Search and Repeat, Graphic Equalizer, Extended Range Sound System and Digital Clock	•	•	•

Individually Available Options

(May be added with any equipment group if not already included.)

- Air Conditioning
- Body-Side Moldings (Std. on RS, Z24)
- Carpeted Floor Mats
- Deck-Lid Carrier (RS Coupe and Z24 only)
- Electronic Instrument Cluster (RS Coupe/Sedan and Z24 only; requires air conditioning)
- Engine Block Heater
- Power Door Locks (Std. on Convertible)
- Power Trunk Opener (Z24 Coupe only)
- Power Windows (Cavalier Wagon only)
- Rear Window Defogger (NA on Convertible)
- Roof Carrier (Wagons only)
- Sport Suspension (Wagons only; requires V6 engine)
- Sunroof, Removable (RS Coupe/Sedan, Z24)
- Tinted Glass (Std. on Convertible).
- Radios**
- AM/FM Stereo with Seek and Scan, Stereo Cassette Tape Player, Extended Range Sound System and Digital Clock
- AM Stereo*/FM Stereo with Seek and Scan, Stereo Cassette Tape Player with Search and Repeat, Graphic Equalizer, Extended Range Sound System and Digital Clock.

*Receives C-Quam AM Stereo broadcasts. Most AM Stereo stations across the country broadcast in C-Quam but some do not. Check with your local stations for compatibility in your area.

C O R S I C A

STANDARDS/OPTIONS

Corsica Standard Features

- All-season steel-belted radial tires
- AM/FM stereo sound system with Seek and Scan and digital clock
- Bright-accented body-side moldings
- Cigarette lighter and lighted ashtray
- Corrosion protection: Two-side-galvanized steel on most body panels
- Dual sport mirrors
- Five-speed manual transmission
- Flush-mounted composite-type halogen headlamps
- Full wheel covers
- Headlamps-on reminder chimes
- Power front disc/rear drum brakes
- Power rack-and-pinion steering
- Power ventilation with four outlets
- Reclining front bucket seats with adjustable head restraints and four-way manual driver's seat adjustment
- Side window defoggers
- 2.0 Liter L4 engine with EFI.

Corsica LT Standard Features

In addition to or replacing standard Corsica Sedan features:

- Black grille
- Body-side moldings
- P195/70R-14 all-season steel-belted radial tires
- Deluxe steering wheel
- Red/black grille emblem
- 14" x 6" styled steel wheels.

Corsica LTZ Standard Features

In addition to or replacing standard Corsica or Corsica LT features:

- Air Conditioning
- Auxiliary Lighting
- Black deck-lid carrier
- Custom Interior with console
- Gage package with tachometer
- Specific exterior appearance
- Special Sport Suspension
- 15" aluminum wheels
- P205/60R-15 Eagle GT+4 tires*
- 2.8 Liter V6 with Multi-Port Fuel Injection.

*Tire chains should not be used on Corsicas equipped with P205/60R-15 tires because they could cause damage to this vehicle.

PREFERRED EQUIPMENT GROUPS: CORSICA SEDAN AND CORSICA LT SEDAN

	1	2	3
Equipment Group 1			
Auxiliary Lighting	■	■	■
Carpeted Front and Rear Floor Mats	■	■	■
Heavy-Duty Battery	■	■	■
Tinted Glass	■	■	■

Equipment Group 2

Air Conditioning	■	■	
Comfortilt Steering Wheel	■	■	
Electronic Speed Control with Resume Speed	■	■	
Gage Package with Tachometer	■	■	
Intermittent Wipers	■	■	

Equipment Group 3

Power Door Locks	■		
Power Trunk Opener	■		
Power Windows	■		
Radio Equipment: Electronically Tuned AM/FM Stereo Radio with Seek and Scan, Stereo Cassette Tape Player, Extended Range Sound System and Digital Clock	■		

PREFERRED EQUIPMENT GROUPS: CORSICA LTZ SEDAN

	1	2
Equipment Group 1		
Carpeted Front and Rear Floor Mats	■	■
Comfortilt Steering Wheel	■	■
Electronic Speed Control with Resume Speed	■	■
Heavy-Duty Battery	■	■
Intermittent Wipers	■	■
Tinted Glass	■	■

Equipment Group 2

Power Door Locks	■		
Power Trunk Opener	■		
Power Windows	■		
Radio Equipment: Electronically Tuned AM/FM Stereo Radio with Seek and Scan, Stereo Cassette Tape Player, Extended Range Sound System and Digital Clock	■		

Individually Available Options

(May be added with any equipment group if not already included.)

- 2.8 Liter V6 with Multi-Port Fuel Injection (Std. on LTZ)
- Air Conditioning (Std. on LTZ)
- Automatic Transmission
- Custom Two-Tone Paint (NA on LT and LTZ)
- Deck-Lid Carrier, Black (Std. on LTZ)
- Electric Rear Window Defogger
- Engine Block Heater
- Full Console with Storage (Std. on LTZ)
- Gage Package with Tachometer (Std. on LTZ)
- Intermittent Wipers
- Pin Striping (NA on LT and LTZ)
- Power Door Locks
- Sport Suspension (Std. on LT and LTZ).

Radios

- AM/FM Stereo with Seek and Scan, Stereo Cassette Tape Player, Extended Range Sound System and Digital Clock*
- AM Stereo/FM Stereo with Seek and Scan, Stereo Cassette Tape Player with Search and Repeat, Graphic Equalizer, Extended Range Sound System and Digital Clock*

Tires and Wheels

- P185/75R-14 All-Season W/S Radial Tires (NA on LT and LTZ)
- P195/70R-14 All-Season B/L Radial Tires (Std. on LT, NA on LTZ)
- Styled Steel Wheels (NA on LT and LTZ)
- 14" Aluminum Wheels (NA on LTZ).

*Requires air conditioning.

*Receives C-Quam AM stereo broadcasts. Most AM stereo stations across the country broadcast in C-Quam but some do not. Check with your local stations for compatibility in your area.

B E R E T T A

STANDARDS/OPTIONS

Beretta Standard Features

- AM/FM stereo sound system with Extended Range Sound System and digital clock
- Base-coat/clear-coat paint
- Body-side moldings
- Dual sport mirrors (left-hand remote)
- Extensive anti-corrosion protection
- Fingertip-control instrument cluster pods
- Flush door-into-roof styling
- Four-way driver's seat adjuster
- Gage package with tachometer
- Front ashtray lamp
- Headlamps-on warning chimes
- Luggage compartment lamp
- Power front disc/rear drum brakes
- Power ventilation system
- Reclining front bucket seats
- Side window defoggers
- Sport suspension with rear stabilizer bar
- Styled steel wheels
- P195/70R-14 all-season steel-belted radial tires
- Tinted glass
- Trip odometer.

Beretta GT Standard Features

In addition to or replacing standard Beretta features:

- 2.8 Liter V6 with MFI
- Special Sport Suspension
- 15" styled steel wheels with P205/60R-15 Eagle GT+4 tires*
- Specific exterior trim
- Custom Cloth interior with split-folding rear seat
- Sport steering wheel.

*Tire chains should not be used on Berettas equipped with P205/60R-15 tires because they could cause damage to this vehicle.

PREFERRED EQUIPMENT GROUPS: BERETTA COUPE

	1	2	3
Equipment Group 1			
Auxiliary Lighting	■	■	■
Carpeted Front and Rear Floor Mats	■	■	■
Heavy-Duty Battery	■	■	■

Equipment Group 2

Air Conditioning	■	■	
Comfortilt Steering Wheel	■	■	
Electronic Speed Control with Resume Speed	■	■	
Intermittent Wipers	■	■	

Equipment Group 3

Power Door Locks	■		
Power Trunk Opener	■		
Power Windows	■		
Radio Equipment: Electronically Tuned AM/FM Stereo Radio with Seek and Scan, Stereo Cassette Tape, Extended Range Sound System and Digital Clock	■		

PREFERRED EQUIPMENT GROUPS: BERETTA GT

	1	2
Equipment Group 1		
Auxiliary Lighting	■	■
Carpeted Front and Rear Floor Mats	■	■
Comfortilt Steering Wheel	■	■
Electronic Speed Control with Resume Speed	■	■
Heavy-Duty Battery	■	■
Intermittent Wipers	■	■

Equipment Group 2

Power Door Locks	■		
Power Trunk Opener	■		
Power Windows	■		
Radio Equipment: Electronically Tuned AM/FM Stereo Radio with Seek and Scan, Stereo Cassette Tape, Extended Range Sound System and Digital Clock	■		

Individually Available Options

(May be added with any equipment group if not already included.)

- 2.8 Liter V6 with Multi-Port Fuel Injection (standard on Beretta GT)
- Air Conditioning
- Automatic Transmission
- 15" Aluminum Wheels (Beretta GT only)
- Custom Two-Tone Paint (NA on Beretta GT)
- Electronic Instrumentation (requires V6)
- Engine Block Heater
- Intermittent Wipers
- Power Door Locks
- Rear Window Defogger and Removable Sunroof.

Radios

- Electronically Tuned AM/FM Stereo Radio with Seek and Scan, Stereo Cassette Tape Player, Extended Range Sound System and Digital Clock
- Electronically Tuned AM Stereo* FM Stereo Radio with Seek and Scan, Stereo Cassette Tape with Search and Repeat, Graphic Equalizer, Extended Range Sound System and Digital Clock.

*Receives C-Quam AM Stereo broadcasts. Most AM stereo stations across the country broadcast in C-Quam but some do not. Check with your local stations for compatibility in your area.

C A M A R O

STANDARDS/OPTIONS

Camaro RS Standard Features

- AM/FM stereo with Seek and Scan, Extended Range Sound System and digital clock
- Base-coat/clear-coat paint
- Cloth reclining bucket seats
- Dual color-keyed sport mirrors (left-hand remote)
- 15" x 7" cast-aluminum wheels
- Five-speed manual transmission
- Front air dam/ground-effects rocker moldings
- Front disc brake audible wear sensors
- PASS-Key™ Vehicle Anti-Theft system
- Power front disc/rear drum brakes
- Power steering
- Power ventilation system
- P215/65R-15 steel-belted all-season radial Touring tires
- Rear deck spoiler
- Rear hatch with automatic pull-down
- Side window defoggers
- Special instrumentation with tachometer
- Sport suspension
- 2.8 Liter V6 with Multi-Port Fuel Injection.

Camaro IROC-Z Standard Features

- In addition to or replacing Camaro RS equipment:
- Black painted headlamp openings
 - Black simulated louvers on hood
 - Camaro gold or silver letters on lower front fascia
 - 5.0 Liter V8 with EFI
 - Halogen fog lamps
 - Leather-wrapped steering wheel and shift knob
 - Special performance ride and handling suspension
 - Specific striping and color-coordinated IROC-Z door decals
 - Specific tail lamps
 - Specific instrumentation with tachometer
 - Visor vanity mirror.

PREFERRED EQUIPMENT GROUPS: CAMARO RS	1	2	3
Equipment Group 1			
Auxiliary Lighting (Standard on Convertible)	•	•	•
Body-Side Moldings	•	•	•
Heavy-Duty Battery	•	•	•
Tinted Glass	•	•	•
Equipment Group 2			
Air Conditioning	•	•	•
Carpeted Front and Rear Floor Mats	•	•	•
Comfortilt Steering Wheel	•	•	•
Electronic Speed Control with Resume Speed	•	•	•
Intermittent Wipers	•	•	•
Power Door Locks	•	•	•
Radio: Electronically Tuned AM/FM Stereo with Seek and Scan, Stereo Cassette Tape Player, Extended Range Sound System and Digital Clock	•	•	•
Equipment Group 3			
Halogen High- and Low-Beam Headlamps	•	•	•
Power Windows	•	•	•
Rear Compartment Cover (Coupe)	•	•	•
Rearview Mirror with Dual Reading Lamps (Standard on Convertible)	•	•	•

PREFERRED EQUIPMENT GROUPS: CAMARO IROC-Z	1	2	3
Equipment Group 1			
Auxiliary Lighting (Standard on Convertible)	•	•	•
Body-Side Moldings	•	•	•
Heavy-Duty Battery	•	•	•
Tinted Glass	•	•	•
Equipment Group 2			
Air Conditioning	•	•	•
Carpeted Front and Rear Floor Mats	•	•	•
Comfortilt Steering Wheel	•	•	•
Electronic Speed Control with Resume Speed	•	•	•
Intermittent Wipers	•	•	•
Power Door Locks	•	•	•
Power Hatch Release (Coupe)	•	•	•
Radio: Electronically Tuned AM/FM Stereo with Seek and Scan, Stereo Cassette Tape Player, Extended Range Sound System and Digital Clock	•	•	•
Equipment Group 3			
Halogen High- and Low-Beam Headlamps	•	•	•
Mirrors, Electric Twin Remote	•	•	•
Radio: Electronically Tuned AM Stereo*/FM Stereo with Seek and Scan, Stereo Cassette Tape Player with Search and Repeat, Graphic Equalizer, Extended Range Sound System and Digital Clock	•	•	•
Rear Compartment Cover (Coupe)	•	•	•
Rearview Mirror with Dual Reading Lamps (Standard on Convertible)	•	•	•
Power Seat (Driver's Side only)	•	•	•
Power Windows	•	•	•

Individually Available Options RS IROC-Z

*(May be added with any equipment group if not already included.)

Air Conditioning	•	•
Aluminum Wheels (16") with P245/50ZR-16 Eagle Unidirectional Tires†	•	•
Deluxe Luggage Compartment Trim (NA on Convertible)	•	•
Door Edge Moldings (Black)	•	•
Electric Rear Window Defogger (NA on Convertible)	•	•
Engine Block Heater	•	•
4-Wheel Disc Power Brakes	•	•
Limited Slip Differential Axle	•	•
Power Door Locks	•	•
Rear Window Louvers (NA on Convertible)	•	•
Removable Roof Panels with Locks (NA on Convertible)	•	•
Split-Folding Rear Seat-Back (Requires Custom Trim)	•	•

DELCO RADIO EQUIPMENT

Delco/Bose Music System, Electronically Tuned AM/FM Stereo Radio with Seek and Scan, Cassette Tape Player, Four Bass Reflex Amplifier/ Speakers and Digital Clock (NA Convertible)	•	•
Electronically Tuned AM/FM Stereo Radio with Seek and Scan, Cassette Tape Player, Extended Range Sound System and Digital Clock	•	•
Electronically Tuned AM Stereo*/FM Stereo Radio with Seek and Scan, Stereo Cassette Tape Player with Search and Repeat, Graphic Equalizer, Extended Range Sound System and Digital Clock	•	•

Radio upgrade available with all option packages.

*Receives C-Quam® AM stereo broadcasts. Most AM stations across the country broadcast in C-Quam but some do not. Check with your local stations for compatibility in your area.

†Tire chains should not be used on Camaros equipped with P245/50VR-16 tires because they could cause damage to this vehicle.

C E L E B R I T Y

STANDARDS/OPTIONS

Celebrity Standard Features

- All-season steel-belted radial tires
- Ashtray and glove box lamps
- Composite halogen headlamps
- Corrosion protection: two-side galvanized steel comprise most body panels
- Delco AM/FM stereo with Seek and Scan, Extended Range Sound System and Digital Clock
- Double-panel hood, deck and tailgate construction
- Flow-through ventilation system
- Full wheel covers
- Headlamps-on warning tone
- Lockable glove compartment
- P185/75R-14 blackwall tires
- Power front disc/rear drum brakes
- Power rack-and-pinion steering
- Power ventilation system
- Side window defoggers.

Celebrity Eurosport Standard Features

- In addition to or replacing standard Celebrity features:
- Special F41 Sport Suspension with specifically tuned shock absorbers and struts
 - Specific exterior trim with red-accented body-side moldings and bumper rub strips
 - P195/75R-14 all-season steel-belted radial tires
 - Quick-ratio power steering
 - Rally Wheels with trim rings.

PREFERRED EQUIPMENT GROUPS: CELEBRITY EUROSPORT SEDAN	1	2	3
Equipment Group 1			
Air Conditioning	•	•	•
Auxiliary Lighting	•	•	•
Color-Keyed Front and Rear Floor Mats	•	•	•
Exterior Molding Package	•	•	•
Heavy-Duty Battery (with V6 only)	•	•	•
Equipment Group 2			
Comfortilt Steering Wheel	•	•	•
Electronic Speed Control with Resume Speed	•	•	•
Gage Package with Trip Odometer	•	•	•
Intermittent Wipers	•	•	•
Power Door Locks	•	•	•
Equipment Group 3			
Mirrors: Twin Sport Remote	•	•	•
Power Trunk Opener	•	•	•
Power Windows	•	•	•
Radio: Electronically Tuned AM/FM Stereo with Seek and Scan, Stereo Cassette Tape Player, Extended Range Sound System and Digital Clock	•	•	•

PREFERRED EQUIPMENT GROUPS: CELEBRITY EUROSPORT WAGON (2-SEAT AND 3-SEAT MODELS)	1	2	3
Equipment Group 1			
Air Conditioning	•	•	•
Auxiliary Lighting	•	•	•
Color-Keyed Front and Rear Floor Mats	•	•	•
Exterior Molding Package	•	•	•
Heavy-Duty Battery (with V6 only)	•	•	•
Equipment Group 2			
Comfortilt Steering Wheel	•	•	•
Electronic Speed Control with Resume Speed	•	•	•
Intermittent Wipers	•	•	•
Gage Package with Trip Odometer	•	•	•
Roof Carrier (Black)	•	•	•
Power Door Locks	•	•	•
Power Lift Gate Release	•	•	•
Equipment Group 3			
Cargo-Area Security Package	•	•	•
Deluxe Rear Compartment Decor	•	•	•
Power Windows	•	•	•
Radio Equipment: Electronically Tuned AM/FM Stereo Radio with Seek and Scan, Stereo Cassette Tape Player, Extended Range Sound System and Digital Clock	•	•	•
Mirrors: Twin Sport Remote	•	•	•

CELEBRITY

STANDARDS/OPTIONS

PREFERRED EQUIPMENT GROUPS: CELEBRITY SEDAN				1	2	3
Equipment Group 1						
Air Conditioning	▪	▪	▪			
Auxiliary Lighting	▪	▪	▪			
Color-Keyed Front and Rear Floor Mats	▪	▪	▪			
Exterior Molding Package	▪	▪	▪			
Heavy-Duty Battery (with V6 only)	▪	▪	▪			
Tires, P185/75R-14 Blackwall	▪	▪	▪			
Equipment Group 2						
Comfortilt Steering Wheel		▪	▪			
Electronic Speed Control with Resume Speed		▪	▪			
Gage Package with Trip Odometer		▪	▪			
Intermittent Wipers		▪	▪			
Power Door Locks		▪	▪			
Equipment Group 3						
Mirrors: Twin Sport Remote		▪	▪			
Power Trunk Opener		▪	▪			
Power Windows		▪	▪			
Radio: Electronically Tuned AM/FM Stereo with Seek and Scan, Stereo Cassette Tape Player, Extended Range Sound System and Digital Clock		▪	▪			
PREFERRED EQUIPMENT GROUPS: CELEBRITY WAGON						
Equipment Group 1						
Air Conditioning	▪	▪	▪			
Auxiliary Lighting	▪	▪	▪			
Color-Keyed Front and Rear Floor Mats	▪	▪	▪			
Exterior Molding Package	▪	▪	▪			
Heavy-Duty Battery (with V6 only)	▪	▪	▪			
Tires, P185/75R-14 Blackwall	▪	▪	▪			
Equipment Group 2						
Comfortilt Steering Wheel		▪	▪			
Electronic Speed Control with Resume Speed		▪	▪			
Gage Package with Trip Odometer		▪	▪			
Intermittent Wipers		▪	▪			
Power Door Locks		▪	▪			
Power Liftgate Release		▪	▪			
Roof Carrier (Chrome)		▪	▪			
Equipment Group 3						
Cargo-Area Security Package		▪	▪			
Deluxe Rear Compartment Decor		▪	▪			
Mirrors: Twin Sport Remote		▪	▪			
Power Windows		▪	▪			
Radio: Electronically Tuned AM/FM Stereo with Seek and Scan, Stereo Cassette Tape Player, Extended Range Sound System and Digital Clock		▪	▪			

Individually Available Options

(May be added with any equipment group.)

Air Conditioning (all models)
Air Deflector (wagons only)
Custom Two-Tone Paint (includes exterior molding package)
Engine Block Heater
Heavy-Duty Cooling (included with air conditioning)
Inflatable Rear Shock Absorbers (NA Eurosport)
Power Door Locks
Power Seat, Driver's Side (requires 55/45 or 45/45 seat)
Radio: AM/FM Stereo with Seek and Scan, Stereo Cassette Tape Player, Extended Range Sound System and Digital Clock
Rear Window Defogger
P195/70R-14 Raised Black-Letter Tires (Eurosport only)
P185/75R-14 Whitewall Tires (NA on Eurosport)
Sport Wheel Covers (NA on Eurosport)
Rally Wheels (Standard on Eurosport)
Wire Wheel Covers (NA on Eurosport)
Aluminum Wheels (Eurosport only)
Reclining Seat-Backs (requires 55/45 or 45/45 seats)
Heavy-Duty Suspension (NA on Eurosport)
Rear Window Wiper/Washer (Wagons only; not available with air deflector).

CAPRICE

STANDARDS/OPTIONS

Caprice Classic Standard Features

- Air Conditioning
- All-season steel-belted radial tires
- AM/FM stereo with Seek and Scan and digital clock
- Bright body-side lower moldings
- Carpeted door trim panels with cloth inserts
- Cloth bench seats with front center armrest
- Composite-type halogen headlamps
- Delco Freedom Plus II maintenance-free battery
- Double-panel doors, hood and deck lid
- Dual aero-style mirrors (LH remote)
- 5.0 Liter V8 with Electronic Fuel Injection
- Fluidic windshield washer system
- 4-speed automatic overdrive transmission
- Front and rear bumper rub strips
- Front and rear door pull straps
- Full Coil suspension
- Full perimeter-type frame
- Full wheel covers
- Glove box lamp
- Headlamps-on reminder chimes
- Instrument panel courtesy lamps
- Luggage compartment lamp
- Power front disc/rear drum brakes
- Power steering
- Quiet Sound Group
- Stand-up Caprice hood ornament
- Tinted glass, all windows
- Wheel opening moldings.

Caprice Classic Brougham

In addition to or replacing standard Caprice Classic equipment:

- Padded full vinyl roof
- Bright/brushed center pillar applique
- Bright trimmed brake and accelerator pedals
- Custom wheel covers
- Exclusive interior with 45/55 cloth front seat
- Front door courtesy and warning lamps and dome/map lamp
- Pull-down center armrests, front and rear
- Special 20-oz. floor carpeting.

Caprice Classic Brougham LS
In addition to or replacing standard Caprice Classic Brougham equipment:

- Door center pillar opera lamps
- LS monograms on rear quarter windows
- Padded landau-style rear roof treatment.

PREFERRED EQUIPMENT GROUPS: CAPRICE CLASSIC SEDAN

	1	2
Equipment Group 1		
Auxiliary Lighting	▪	▪
Body-Side Moldings	▪	▪
Carpeted Floor Mats, Front and Rear	▪	▪
Comfortilt Steering Wheel	▪	▪
Electronic Speed Control with Resume Speed	▪	▪
Extended Range Sound System	▪	▪
Heavy-Duty Battery	▪	▪
Intermittent Wipers	▪	▪
Mirrors: Twin Sport Remote	▪	▪
Power Trunk Opener	▪	▪
Tires, P205/75R-15 W/S	▪	▪
Equipment Group 2		
Deluxe Luggage Compartment Trim		▪
Illuminated Right-Hand Visor Mirror		▪
Power Door Locks		▪
Power Seat: 6-way (Driver and Passenger)		▪
Power Windows		▪
Radio: Electronically Tuned AM/FM Stereo with Seek and Scan, Stereo Cassette Tape Player, Extended Range Sound System, Power Antenna and Digital Clock		▪

PREFERRED EQUIPMENT GROUPS: CAPRICE CLASSIC BROUGHAM SEDAN

	1	2
Equipment Group 1		
Body-Side Moldings	▪	▪
Carpeted Floor Mats, Front and Rear	▪	▪
Extended Range Sound System	▪	▪
Gage Package with Trip Odometer	▪	▪
Heavy-Duty Battery	▪	▪
Illuminated Right-Hand Visor Mirror	▪	▪
Mirrors: Twin Sport Remote	▪	▪
Power Trunk Opener	▪	▪
Tires, P205/75R-15 W/S	▪	▪
Twilight Sentinel	▪	▪
Equipment Group 2		
Comfortilt Steering Wheel		▪
Cornering Lamps		▪
Deluxe Luggage Compartment Trim		▪
Electronic Speed Control with Resume Speed		▪
Intermittent Wipers		▪
Power Door Locks		▪
Power Seats (Passenger/Driver)		▪
Power Windows		▪
Radio: Electronically Tuned AM/FM Stereo with Seek and Scan, Stereo Cassette Tape Player, Extended Range Sound System, Power Antenna and Digital Clock		▪
Wire Wheel Covers w/ Locks		▪

CAPRICE

STANDARDS/OPTIONS

PREFERRED EQUIPMENT GROUPS: CAPRICE CLASSIC WAGON	1	2	3
Equipment Group 1			
Auxiliary Lighting	•	•	•
Body-Side Moldings	•	•	•
Deluxe Load Floor Carpeting	•	•	•
Heavy-Duty Battery	•	•	•
Mirrors: Twin Sport Remote	•	•	•
Equipment Group 2			
Carpeted Floor Mats, Front and Rear	•	•	•
Comfortilt Steering Wheel	•	•	•
Electronic Speed Control with Resume Speed	•	•	•
Intermittent Wipers	•	•	•
Power Door Locks (including Tailgate)	•	•	•
Power Windows	•	•	•
Radio Equipment: Electronically Tuned AM/FM Stereo Radio with Seek and Scan, Stereo Cassette Tape Player, Digital Clock and Power Antenna	•	•	•
Roof Carrier	•	•	•
Equipment Group 3			
Cornering Lamps	•	•	•
Deluxe Rear Compartment Decor	•	•	•
Gage Package with Trip Odometer	•	•	•
Illuminated Right-Hand Visor Mirror	•	•	•
Power Seats (Driver/Passenger) N/A with Bench Seat	•	•	•
Radio Equipment: Electronically Tuned AM/FM Stereo Radio with Seek and Scan, Stereo Cassette Tape Player, Dual Rear Speakers, Graphic Equalizer, Power Antenna and Digital Clock	•	•	•
Twilight Sentinel	•	•	•

PREFERRED EQUIPMENT GROUPS: CAPRICE CLASSIC BROUGHAM LS SEDAN	1	2
Equipment Group 1		
Body-Side Moldings	•	•
Carpeted Floor Mats, Front and Rear	•	•
Comfortilt Steering Wheel	•	•
Electronic Speed Control with Resume Speed	•	•
Gage Package with Trip Odometer	•	•
Heavy-Duty Battery	•	•
Illuminated Right-Hand Visor Mirror	•	•
Intermittent Wipers	•	•
Mirrors: Twin Sport Remote	•	•
Power Door Locks	•	•
Power Seats: Passenger and Driver	•	•
Power Trunk Opener	•	•
Power Windows	•	•
Radio: Electronically Tuned AM/FM Stereo with Seek and Scan, Stereo Cassette Tape Player, Extended Range Sound System, Power Antenna and Digital Clock	•	•
Tires, P205/75R-15 W/S	•	•
Twilight Sentinel	•	•
Wire Wheel Covers (with locks)	•	•
Equipment Group 2		
Cornering Lamps	•	•
Deluxe Luggage Compartment Trim	•	•
Radio: Electronically Tuned AM/FM Stereo with Seek and Scan, Stereo Cassette Tape Player, Graphic Equalizer, Extended Range Sound System, Power Antenna and Digital Clock	•	•

INDIVIDUAL OPTIONS	Caprice Classic Sedan	Caprice Classic Wagon	Caprice Classic Brougham
*May be added with any option equipment group if not already included.			
Body Pin Striping	O	O*	O
Custom Two-Tone Paint	O	O*	O*
Engine Block Heater	O	O	O
Estate Equipment	NA	O	NA
Heavy-Duty Cooling	O	O	O
Heavy-Duty Suspension	O	S	O
Limited Slip Rear Axle (not available with performance ratio axle)	O	O	O
Performance Axle Ratio	O	O	O
Power Door Lock System	O	O	O
Rear Air Deflector	NA	O	NA
Rear Air Shock Absorbers	NA	O	NA
Rear Window Defogger	O	O	O
Sport Suspension (requires P225/70R-15 tires and performance axle)	O	NA	O
Trunk Cargo Net	O	O	NA
Vinyl Roof	O	NA	S
Radios:			
AM/FM Stereo w/Seek and Scan, Stereo Cassette Tape Player and Digital Clock	O	O†	O
AM/FM Stereo with Seek and Scan, Extended Range Sound System, Stereo Cassette Tape Player, Graphic Equalizer and Digital Clock	O	O†	O
Seat Styles and Options:			
Cloth 50/50 Seat	O	O	NA
Cloth 45/55 Seat	NA	NA	S
Leather 45/55 Seat	NA	NA	O
Vinyl Bench Seat	NA	O	NA
Vinyl 50/50 Seat	NA	O	NA
Tires and Wheels:			
P205/75R-15 B/S Tire	S	NA	S
P205/75R-15 W/S Tire	O	NA	O
P225/75R-15 W/S Tire	NA	S	NA
P225/70R-15 W/S Tire (Sedans; required with F41 Sport Suspension)	O	NA	O
Custom Wheel Covers	O	O	S
Wire Wheel Covers with Locks	O	O	O
S: Standard O: Optional NA: Not Available			
*Not available on Brougham LS or Estate Wagon. †Does not include ERS system.			

SAFETY FEATURES

Occupant Protection

• Manual lap/shoulder safety belts for driver and right front passenger, driver side includes visual and audible warning system (except models with automatic safety belt systems) • Automatic safety belt system for driver and right front passenger on Corsica and Beretta models • Manual lap/shoulder safety belts for outboard rear seat positions (all models except Corvette) • Manual lap safety belts, center front/rear seat positions (all models except Corvette where applicable) • Energy-absorbing steering column • Energy-absorbing instrument panel • Energy-absorbing front seat-back tops (except Corvette) • Laminated safety windshield glass • Safety interlocking door latches • Side-guard door beam • Passenger-guard inside door lock handles • Inertia-locking, folding front seat-backs on 2-door models (except Corvette) • Safety armrests • Head restraints, driver and right front passenger (adjustable or integral).

Accident Avoidance

• Side marker lights and reflectors • Parking lamps that illuminate with headlamps • Four-way hazard warning flasher • Backup lights • Center high-mounted stop lamp • Directional signal control with lane-change feature • Windshield defroster, washer and multi-speed wipers (pulse-type on Corvette) • Inside rearview mirror • Outside left rearview mirror (right also on Caprice, Celebrity, Camaro, Cavalier Z24, Corsica, Beretta; dual electric remote outside rearview mirrors on Corvette) • Brake system with dual master cylinder and warning light • Starter safety switch • Dual-action hood latch system (except Corvette) • Low-glare finish on inside windshield moldings, wiper arms and blades, metallic steering wheel surfaces • Illuminated heater and defroster controls • Illuminated windshield wiper and washer controls (if on instrument panel; driver's door on Corvette) • Tires with built-in tread-wear indicators.

Theft Deterrence

• Audible reminder for ignition key removal • Theft-deterrent steering column lock • Visible vehicle identification number • Marked body parts on Camaro (hood, front fenders, front and rear bumpers, doors, rear quarter panels, deck lid) • Vehicle Anti-Theft System (VATS) on Corvette and Camaro • Audio alarm system with starter-interrupt feature on Corvette • Locking roof panel with theft-deterrent mount (Corvette Coupe only) • Theft-deterrent wheel lugs on Corvette.

Important: A Word About This Catalog.

We have tried to make this catalog as comprehensive and factual as possible. We reserve the right, however, to make changes at any time, without notice, in prices, colors, materials, equipment, specifications, models and availability. Since some information may have been updated since the time of printing, please check with your Chevrolet dealer for complete details, including details on the GM warranty which covers Chevrolets.

A Word About Assembly Of Chevrolets.

Chevrolets are assembled by different operating units of General Motors, its subsidiaries or suppliers to GM worldwide. Chevrolets incorporate thousands of components produced by different operating units of GM, its subsidiaries or suppliers to GM worldwide. We sometimes find it necessary to produce Chevrolets with different or differently sourced components than originally scheduled. All such components have been approved for use in Chevrolets and will provide the quality performance associated with the Chevrolet name. Since some options may be unavailable when your vehicle is assembled, we suggest that you verify that your vehicle includes the equipment you ordered or, if there are changes, that they are acceptable to you.

A Word About Engines.

Chevrolets are equipped with engines produced by different operating units of GM, its subsidiaries or suppliers to GM worldwide.

A Word About Updated Service Information.

Chevrolet regularly sends its dealers useful service bulletins about Chevrolet products. Chevrolet monitors product performance in the field. We then prepare bulletins for servicing our products better. Now you can get these bulletins, too. Ask your dealer. To get ordering information, call toll-free 1-800-551-4123.

At your Chevrolet dealer's, financing or leasing your new Chevrolet can be as easy as saying GMAC.



© 1988 General Motors Corporation. All rights reserved.



THE *Heartbeat* OF AMERICA  TODAY'S CHEVROLET

1989 CHEVROLET

THE *Heartbeat* OF AMERICA  TODAY'S CHEVROLET