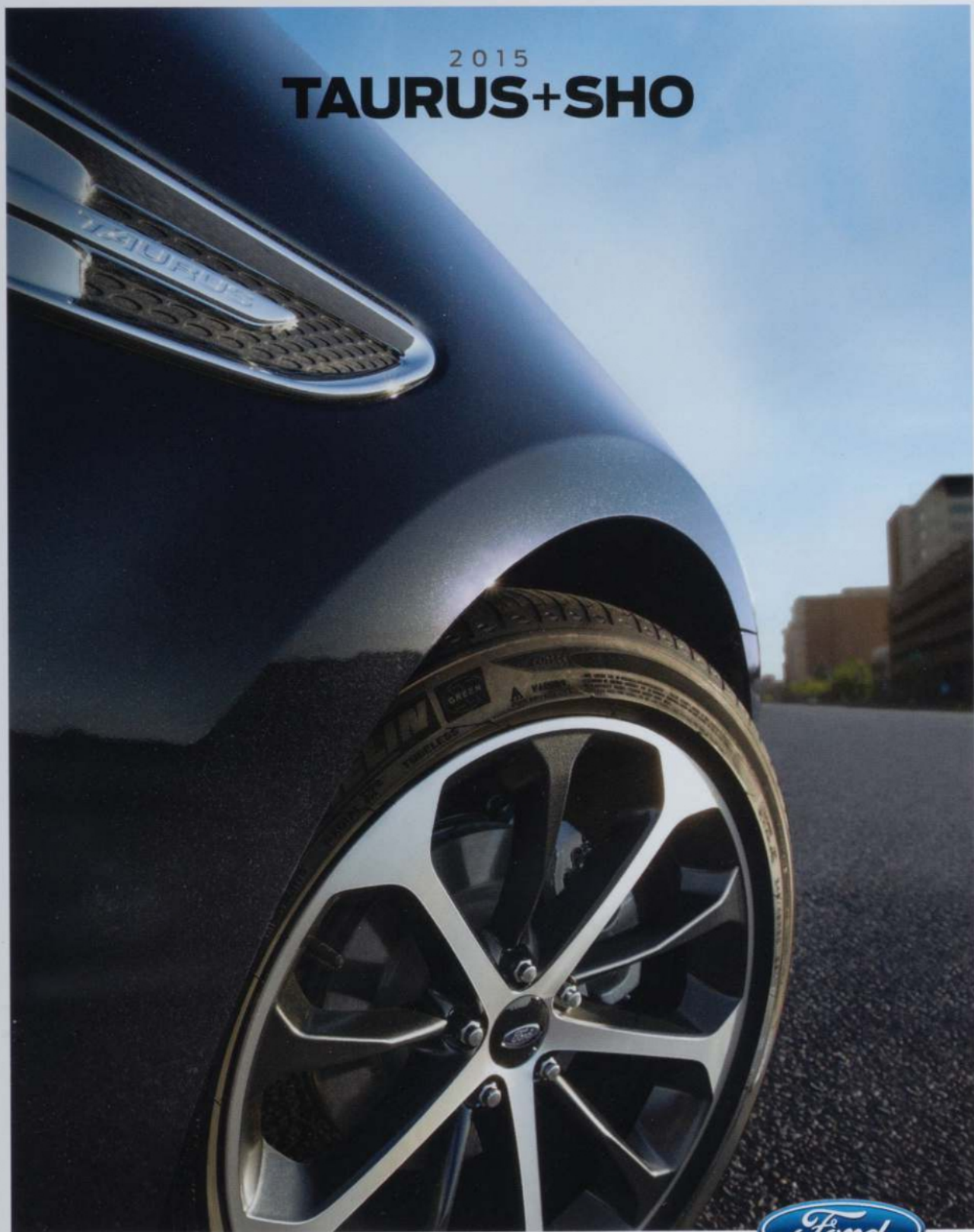


2015
TAURUS+SHO

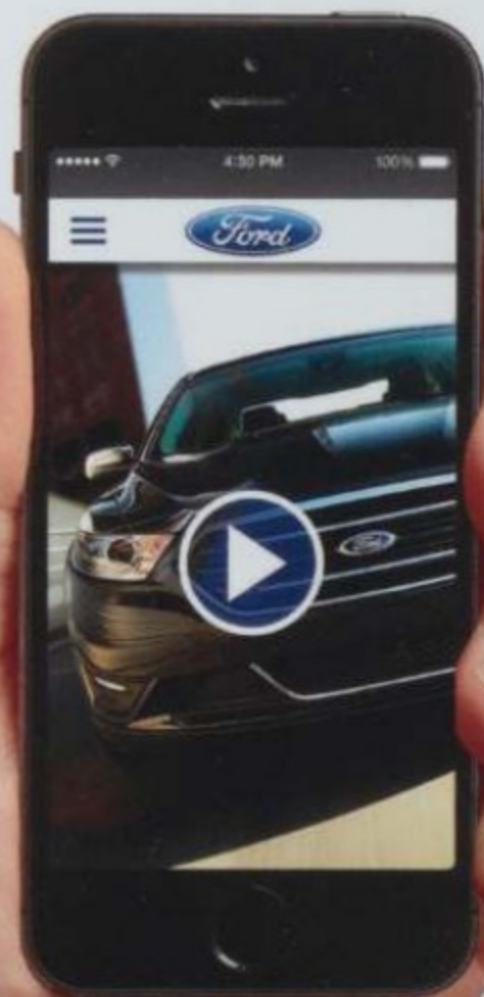


Go Further

Powered
with advanced
technology.



See how Taurus
puts you in
the driver's seat.



Mobile data rates may apply.

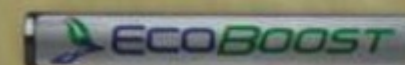
SHO. Ruby Red Tinted Clearcoat Metallic. Available equipment.



Lead by example.

The 2015 Ford Taurus excels at the full-size luxury car experience you're looking for. A spacious, finely crafted interior. Advanced driver-assist technologies.¹ Sure-footed handling. Generous trunk space. It also delivers what you might not expect.

Class-best² highway fuel efficiency is yours when you equip Taurus with the 2.0L EcoBoost[®] I-4 engine.¹



This turbocharged, direct-injection powerplant supplies immediate straight-line acceleration, and is teamed with a 6-speed SelectShift[®] automatic transmission for outstanding highway fuel economy (travel an EPA-estimated range of 494 miles without having to fill up).³ The 3.5L TI-VCT V6 engine features twin independent variable camshaft timing, allowing for a robust 288 horsepower while also contributing to efficiency.

CLASS-BEST
EPA-ESTIMATED RATING



32 HWY MPG²

TURBOCHARGED¹



AWD



TRACTION¹

Limited. Tuxedo Black. Available equipment.

¹Available feature. ²EPA-estimated rating: 22 city/32 hwy/26 combined mpg. Actual mileage will vary. Class is Full-Size Sedans, Non-Hybrid. ³EPA-estimated rating: 22 city/32 hwy/26 combined mpg, 19-gallon fuel tank; 2.0L EcoBoost I-4. Range calculation based on www.fueleconomy.gov. Actual mileage will vary.

Embrace curves.

Taurus does. Our engineers tuned the suspension calibration of each model to deliver an engaging driving experience.

Stay poised through the corners, even when accelerating, with standard Torque Vectoring Control.¹ The system applies slight braking force to the inside front wheel as needed to help more torque reach the road and keep the vehicle firmly planted.

Keep on track through sharp turns with standard Curve Control.¹ When it senses you're taking a curve too quickly, the system can slow the vehicle by as much as 10 mph in about a second to help maintain control. All-wheel drive (AWD)² balances torque between the front and rear wheels to enhance handling and maximize traction. Also equipped with AdvanceTrac[®] electronic stability control and vented front rotors (all rotors are vented for SHO), the 2015 Taurus is engineered for maximum agility.



Limited. Tuxedo Black. Available equipment.

¹Driver-assist features are supplemental and do not replace the driver's judgment. ²Available feature.



Reward accomplishments.

Take an
interior
tour



With space to stretch out. Plus amenities that help you relax. Even revive.

Massage your lower back and upper leg area, and change your seat contour with the leather-trimmed, power front seats¹ equipped with Active Motion.^{®1} Heated and cooled power front seats, power-adjustable pedals and power sideview mirrors, all with memory and standard on Limited and SHO, make life even more comfortable.

Rest your hand on soft-touch surfaces in this meticulously assembled interior of premium materials, finely stitched seats and eye-catching accents.

Bring tranquility to your day with a grip of its heated steering wheel¹ or from a gentle breeze through the power moonroof.¹ To experience this – and more – on every drive, reserve some quality time in a 2015 Ford Taurus.

Limited. Charcoal Black leather trim with perforated inserts and ambient lighting. Available equipment.

¹Available feature.



Say a command.

Then marvel as standard voice-activated Ford SYNC®1 with 911 Assist® delivers hands-free calls, Bluetooth®-streaming music and more with simple voice commands. Once paired, it can download contacts and play music from your smartphone. It can also access your MP3 player, USB or iPod.® Just touch a button on the steering wheel and say things like "Call: Broker at office" or "Play playlist: Jazz."

Control apps by voice too, such as Pandora,® iHeartAuto™ and SiriusXM,® with SYNC AppLink.™2 In Taurus, taking command of your drive is easy. SYNC. Say the word.

| SYNC

Limited. Dune leather trim with perforated inserts. SYNC with MyFord Touch. Available equipment.

1Driving while distracted can result in loss of vehicle control. Only use mobile phones and other devices, even with voice commands, when it is safe to do so. Not all features are compatible with all phones. 2SYNC AppLink is available on select models and compatible with select smartphone platforms. SYNC AppLink is not compatible with MyFord Touch.® Commands may vary by phone and AppLink software.

Stay informed.

It's easy with colorful graphics. Fast touch-screen response. And simple controls. SYNC^{®1} with MyFord Touch^{®1} gives you voice and touch control of your phone, entertainment, navigation² and climate.

Answer a call from your paired phone by pressing "accept" on the 8" color LCD touch screen. With HD Radio[™] Technology,² simply touch the shopping cart icon while a new favorite is playing and purchase it later with iTunes[®] tagging.



SiriusXM^{®2} lets you enjoy commercial-free music, plus sports, news, entertainment and every premium channel with your 6-month All Access trial subscription.³ The voice-activated Navigation System² also includes a 5-year subscription to SiriusXM Traffic and Travel Link[®] services.² These features provide detailed traffic information on accidents, construction, and road closures, plus local and national weather forecasts, fuel prices and more.³



¹Available feature. Driving while distracted can result in loss of vehicle control. Only use SYNC/MyFord Touch/other devices, even with voice commands, when it is safe to do so. Some features may be locked out while the vehicle is in gear. Not all features are compatible with all phones. ²Available feature. ³Trial subscription also includes access to SiriusXM Internet Radio on your computer, smartphone or tablet. Satellite and Internet Radio lineups vary slightly.





Command respect.

There's power in a name. Like the 365 hp¹ in SHO (Super High Output).

Instant straight-line acceleration erupts from the twin turbos and direct-injection of its 3.5L EcoBoost® V6. Together with standard AWD and vented discs, Taurus SHO excels at true enthusiast performance. Plus an EPA-estimated rating of 25 hwy mpg.²

"It feels nearly nuclear," says MSN Autos. The SHO Performance Package adds additional heat: unique shocks and springs, a 3.16:1 final drive ratio, performance friction brake pads, and performance summer tires.³ A true "off" mode for the AdvanceTrac® electronic stability control even lets you do your own fine tuning. No one else has to know.

¹Using 93-octane fuel. ²EPA-estimated rating: 17 city/25 hwy/20 combined mpg, 3.5L EcoBoost V6, AWD. Actual mileage will vary. ³Ford does not recommend using summer tires when temperatures drop to approximately 40°F or below (depending on tire wear and environmental conditions) or in snow/ice conditions. If the vehicle must be driven in these conditions, Ford recommends using all-season or snow tires. ⁴Based on Ford testing.

350 LB.-FT.¹ | 365 HP¹

0-60

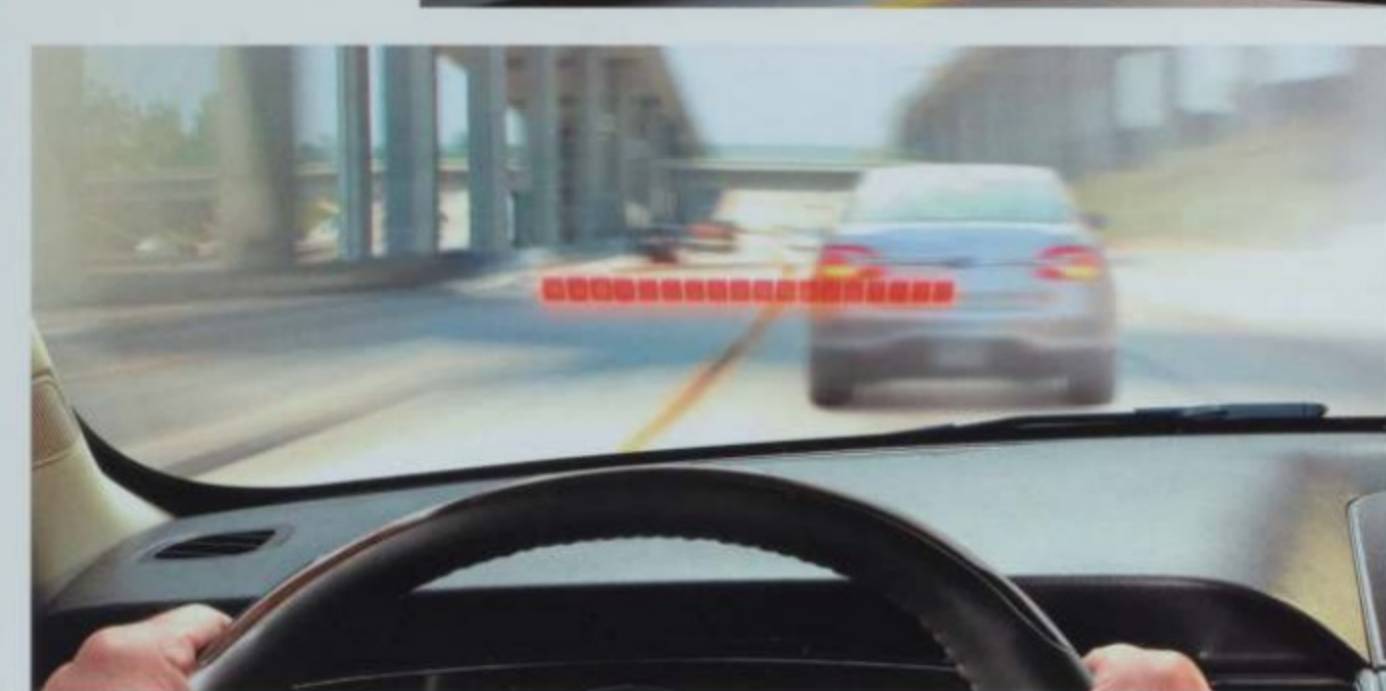


5.5 SEC.⁴

1/4

MILE 14.4 SEC.⁴

SHO, Ruby Red Tinted Clearcoat Metallic. Available equipment.



Keep innovating.

Advanced technology powers Taurus. Using ultrasonic sensors and radar, driver-assist technologies¹ can help you parallel park, avoid collisions and more.

Make parallel parking easier with active park assist.¹ This system not only helps you find a spot, it actually steers the vehicle into place while you control the gear shifter, and brake and accelerator pedals.

Maintain your lane with help from our Lane-Keeping System.^{1,2} It can detect lane markings with a forward-facing camera and send vibration pulses to the steering wheel. If needed, it can apply steering torque to prompt you to steer back toward center.

Stay alert to traffic detected in blind spots as you drive forward, or traffic nearing either side of the vehicle as you slowly back up, thanks to BLIS[®] (Blind Spot Information System) with cross-traffic alert.¹ It helps warn you using lights embedded in the sideview mirrors.³

Get a heads-up from adaptive cruise control and collision warning with brake support.¹ This system helps maintain your choice of 4 preset gaps from the vehicle in front of you and can alert you to a potential collision. If one is detected, it flashes a warning on the windshield, sounds an alarm, and preps the braking system to help.

¹Available feature. Driver-assist features are supplemental and do not replace the driver's judgment.
²Lane-Keeping System does not control steering. ³BLIS replaces standard integrated blind spot mirrors.



Protect your own.

Should the unthinkable happen, the 2015 Ford Taurus is engineered to help protect.

An intricate safety cage around the passenger compartment is formed from a masterful mix of high-strength and ultra-high-strength boron steel. In certain collisions, enhanced driver and front-passenger airbags adjust their deployment force to occupant size, position and safety belt status.

Help keep all 4 wheels firmly planted, particularly in inclement weather, with standard AdvanceTrac[®] electronic stability control.¹ To help you see farther at night, auto high beams² activate when no automotive headlamps or taillamps are detected in front.

¹Remember that even advanced technology cannot overcome the laws of physics. It's always possible to lose control of a vehicle due to inappropriate driver input for the conditions. ²Available feature. ³The vehicle's electrical system (including the battery), the wireless service provider's signal and a connected mobile phone must all be available and operating for 911 Assist to function properly. These systems may become damaged in a crash. The paired mobile phone must be connected to SYNC, and the 911 Assist feature enabled, in order for 911 to be dialed. When the feature is ON, 911 Assist uses your paired and connected mobile phone to assist occupants to contact emergency services by dialing 911 if your airbag deploys or, on certain vehicles, if the emergency fuel pump shut-off is activated.

ADVANCETRAC



ELECTRONIC STABILITY CONTROL



6 AIRBAGS



911 ASSIST³

SHO, Ruby Red Tinted Clearcoat Metallic. Available equipment.

Taurus Specifications



Standard Features

Mechanical

- 4-wheel disc Anti-Lock Brake System (ABS)
- Battery Management System
- Brake- and engine-actuated traction control
- Electric power-assisted steering (EPAS)
- Suspension – Front: independent MacPherson strut
- Suspension – Rear: independent multilink
- Torque Vectoring Control

Seating

- 4-way adjustable front head restraints
- Front bucket seats
- 60/40 split-fold rear seat back with fold-down center armrest

Interior

- 12-volt powerpoints (3)
- Accessory delay for power features
- Adjustable rear vents
- Cruise control
- Driver and front-passenger seat back map pockets
- Ford SYNC® voice-activated, in-vehicle connectivity system
- Front and rear carpeted floor mats
- Front center floor console with armrest and storage
- Front overhead console with dome and map lights
- Power door locks
- Rear-seat reading lights
- Rear view camera
- Sliding sun visors with illuminated vanity mirrors
- Steering wheel-mounted cruise, audio and 5-way MyFord® controls (2)
- Tilt/telescoping steering column

Exterior

- Easy Fuel® capless fuel filler
- Light-emitting diode (LED) taillamps
- Power sideview mirrors with integrated blind spot mirrors
- Rear-window defroster
- Solar-tinted glass

Safety & Security

- Personal Safety System™ for driver and front passenger includes dual-stage front airbags¹; safety belt pretensioners, safety belt energy-management retractors, safety belt usage sensors, driver's seat position sensor, crash severity sensor, restraint control module and Front-Passenger Sensing System
- 3-point safety belts for all seating positions
- AdvanceTrac® electronic stability control and Curve Control
- Battery saver
- Belt-Minder® front safety belt reminder
- Child-safety rear door locks
- Emergency trunk release
- Front-seat side airbags¹
- Illuminated Entry System
- LATCH (Lower Anchors and Tether Anchors for Children)
- MyKey®
- Safety Canopy® System with side-curtain airbags¹ and rollover sensor
- SecuriCode™ invisible keypad
- SecuriLock® Passive Anti-Theft System
- SOS Post-Crash Alert System™
- Tire Pressure Monitoring System (excludes spare)

Engines/EPA-Estimated Ratings & Dimensions

3.5L TI-VCT V6

- 288 hp @ 6,500 rpm
- 254 lb.-ft. of torque @ 4,000 rpm
- 6-speed SelectShift® automatic
- FWD 19 city/29 hwy/23 combined mpg
- AWD 18 city/26 hwy/21 combined mpg

2.0L EcoBoost® I-4

- 240 hp @ 5,500 rpm²
- 270 lb.-ft. of torque @ 1,675–4,800 rpm²
- 6-speed SelectShift automatic
- FWD 22 city/32 hwy/26 combined mpg

3.5L EcoBoost V6

- 365 hp @ 5,500 rpm²
- 350 lb.-ft. of torque @ 3,000 rpm²
- 6-speed SelectShift automatic
- AWD 17 city/25 hwy/20 combined mpg

Exterior

- Wheelbase 112.9"
- Length 202.9"
- Height 60.7"
- Width – Excluding mirrors 76.2"
- Width – Including mirrors 85.7"

Interior

- Front/Rear 39.0"/37.8"
- Head room 57.9"/56.9"
- Shoulder room 56.3"/55.8"
- Hip room 44.2"/38.1"
- Leg room

Capacities (cu. ft.)

- Passenger volume 102.2
- Luggage capacity 20.1
- Total interior volume 122.3

Fuel Tank (gal.)

- FWD/AWD 19.0

Tour the full gallery



¹Always wear your safety belt and secure children in the rear seat. ²Using 93-octane fuel. Dimensions may vary by trim level.

SE & SEL



SE, Deep Impact Blue. SEL, Ingot Silver. Available equipment.

MyFord 4.2" color LCD display in center stack.

Intelligent Access with push-button start.¹

Cargo organizer.¹

¹Available feature. ²SYNC Services varies by trim level and model year and may require a subscription. Traffic alerts and turn-by-turn directions available in select markets. Message and data rates may apply. Ford Motor Company reserves the right to change or discontinue this product service at any time without prior notification or incurring any future obligation.

SE

Equipment Group 100A
Includes all standard features, plus:

Mechanical

- 3.5L Ti-VCT V6 engine
- 6-speed SelectShift[®] automatic transmission with Sport Mode and shifter button activation
- Front-wheel drive (FWD)

Seating

- 6-way power driver and front-passenger seats with manual lumbar adjustment
- Cloth seats

Interior

- AM/FM stereo/single-CD player with MP3 capability and 6 speakers
- Auxiliary audio input jack
- Day/night rearview mirror
- Message center
- Power windows with one-touch-up/-down driver's side window feature
- Single-zone manual air conditioning
- SYNC[®] with MyFord[®] voice-activated, in-vehicle connectivity system with 4.2" color LCD displays in instrument cluster and center stack

Exterior

- 17" Sparkle Silver-painted aluminum wheels with P235/60R17 all-season tires
- Black, power sideview mirrors
- Bright-painted grille
- Quasi-dual exhaust with bright tips
- Remote Keyless Entry System with integrated keyhead transmitter remotes (2)
- Wiper-activated halogen headlamps with autolamp

Available Options

- 2.0L EcoBoost[®] I-4 engine with 6-speed SelectShift automatic transmission with Sport Mode and shifter button activation
- All-weather floor mats
- Ash cup/coin holder with lighter element
- Cargo organizer

SEL

Equipment Group 200A
Includes select SE features, plus:

Seating

- Unique cloth seats

Interior

- Auto-dimming rearview mirror
- Covered front-row cupholders and storage
- Dual-zone electronic automatic temperature control
- Leather-wrapped shift knob with chrome trim
- Leather-wrapped steering wheel
- Message center with compass
- Outside temperature display
- Remote Start System
- SiriusXM[®] Satellite Radio with 6-month trial subscription

Exterior

- 18" Sparkle Silver-painted aluminum wheels with P235/55R18 all-season tires
- Anti-theft perimeter alarm
- Body-color, power, heated sideview mirrors with security approach lamps
- LED supplemental park lamps
- Reverse Sensing System

Available Equipment Group

Equipment Group 201A – SYNC with MyFord Touch[®] voice-activated, in-vehicle connectivity system, which includes SYNC Services;² 2 configurable 4.2" color LCD displays in instrument cluster; 8" color LCD touch screen in center stack; media hub with 2 USB ports, SD card reader and audio/video input jacks + additional center channel speaker + power-adjustable pedals + Intelligent Access with push-button start (2 key fob transmitters)

Available Options

- 2.0L EcoBoost I-4 engine with 6-speed SelectShift automatic transmission with Sport Mode and shifter button activation (n/a with AWD)
- 20" 10-spoke machined and low-gloss ebony-painted aluminum wheels with P245/45R20 all-season tires (requires 201A)
- All-weather floor mats
- All-wheel drive (AWD)
- Ash cup/coin holder with lighter element
- Cargo organizer
- Leather-trimmed seats with heated front seats
- Power moonroof (requires 201A)
- Rear decklid spoiler
- Voice-activated Navigation System with integrated SiriusXM Traffic and Travel Link[®] with 5-year subscription (requires 201A)



17" Sparkle Silver-Painted Aluminum
Standard: SE



18" Sparkle Silver-Painted Aluminum
Standard: SEL



20" 10-Spoke Machined and Low-Gloss Ebony-Painted Aluminum
Optional: SEL

Limited

Equipment Group 300A

Includes select SEL features, plus:

Seating

10-way power driver and front-passenger seats with driver's side memory feature

Heated and cooled front seats

Leather-trimmed seats with perforated leather inserts

Interior

Additional center channel speaker

Ambient lighting

Bright front door-sill scuff plates

Cargo net

Intelligent Access with push-button start (2 key fob transmitters)

Leather-wrapped steering wheel with wood accent

Power-adjustable pedals with memory

Power-tilt/-telescoping steering column

Power windows with global open and one-touch-up/-down for driver and front passenger

SYNC[®] with MyFord Touch[®] voice-activated, in-vehicle connectivity system which includes SYNC Services;¹ 2 configurable 4.2" color LCD displays in instrument cluster; 8" color LCD touch screen in center stack; and media hub with 2 USB ports, SD card reader and audio/video input jacks

Universal garage door opener

Exterior

19" premium Luster Nickel-painted aluminum wheels with P255/45R19 LRR all-season tires

Chrome-accented body-color-painted grille

Chrome-accented, power, heated sideview mirrors with memory and security approach lamps

Available Equipment Group

Equipment Group 301A – Auto high beams with rain-sensing windshield wipers + auto-dimming driver's sideview mirror + BLIS[®] (Blind Spot Information System) with cross-traffic alert + heated steering wheel + heated rear outboard seats + rear-window power sunshade + "LIMITED" branded front floor mats + Audio System from Sony[®] with 12 speakers and HD Radio[™] Technology

Available Options & Package

2.0L EcoBoost[®] I-4 engine with 6-speed SelectShift[®] automatic transmission with Sport Mode and shifter button activation (n/a with AWD)

20" 10-spoke machined and low-gloss ebony-painted aluminum wheels with P245/45R20 all-season tires (requires 301A)

20" polished aluminum wheels with P245/45R20 all-season tires (requires 301A)

All-weather floor mats

All-wheel drive (AWD)

Ash cup/coin holder with lighter element

Cargo organizer

Driver Assist Package includes adaptive cruise control and collision warning with brake support, Lane-Keeping System, and active park assist (requires 301A)

Multicontour front seats with Active Motion[®] (requires 301A)

Power moonroof

Rear decklid spoiler

Voice-activated Navigation System with integrated SiriusXM[®] Traffic and Travel Link[®] with 5-year subscription



19" Premium Luster Nickel-Painted Aluminum Standard



20" Polished Aluminum Optional



20" 10-Spoke Machined and Low-Gloss Ebony-Painted Aluminum Optional

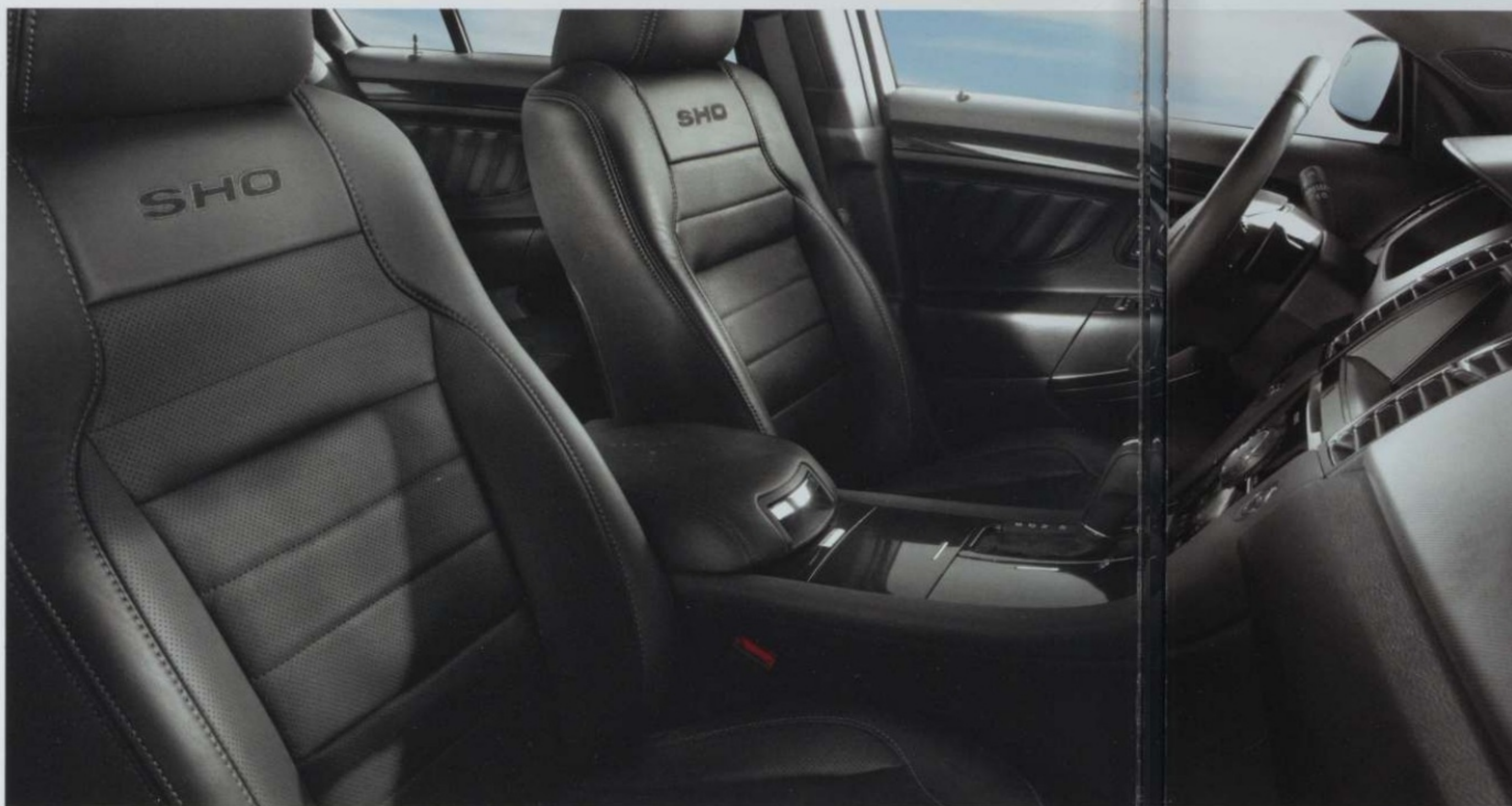
Tuxedo Black. Available equipment.

Rear view camera.

Rear-window power sunshade.²

"LIMITED" branded front floor mats.²

¹SYNC Services varies by trim level and model year and may require a subscription. Traffic alerts and turn-by-turn directions available in select markets. Message and data rates may apply. Ford Motor Company reserves the right to change or discontinue this product service at any time without prior notification or incurring any future obligation. ²Available feature.



Charcoal Black leather-trimmed seats with Charcoal Black perforated inserts and embroidered "SHO" graphics on front seats.

Heated rear-seat controls, included in Equipment Group 401A.

"SHO" 3.5L EcoBoost V6 engine cover.

Rear decklid spoiler.

Equipment Group 400A
Includes select LIMITED features, plus:

Mechanical

- 3.5L EcoBoost® V6 engine
- 6-speed SelectShift® automatic transmission with Sport Mode and paddle shifters
- 2.77:1 final drive ratio
- 13.85" vented front rotors
- All-wheel drive (AWD)
- Sport-tuned suspension

Seating

- Leather-trimmed seats with perforated inserts
- "SHO" graphics embroidered on front seats

Interior

- Aluminum pedal covers
- "SHO" branded front floor mats
- Top grain leather-wrapped steering wheel

Exterior

- 20" machined and painted aluminum wheels with P245/45R20 all-season tires
- Dual exhaust with bright tips
- High-intensity discharge (HID) headlamps
- LED supplemental park lamps with piano black bezels
- Piano black mesh grille
- Piano black, power, heated sideview mirrors with memory, security approach lamps and auto-dimming driver's side
- Rear decklid spoiler
- "SHO" branded side fender vents

Available Equipment Group

Equipment Group 401A – Auto high beams with rain-sensing windshield wipers + BLIS® (Blind Spot Information System) with cross-traffic alert + heated steering wheel + heated rear outboard seats + rear-window power sunshade + Audio System from Sony® with 12 speakers and HD Radio™ Technology

Available Options & Packages

20" 10-spoke machined and low-gloss ebony-painted aluminum wheels

Driver Assist Package includes adaptive cruise control and collision warning with brake support, Lane-Keeping System, and active park assist (requires 401A; n/a with SHO Performance Package)

All-weather floor mats

Ash cup/coin holder with lighter element

Cargo organizer

Multicontour front seats with Active Motion® (requires 401A)

Power moonroof (requires 401A)

SHO Performance Package includes an enhanced sport-tuned suspension, performance friction brake pads, sport-calibrated steering, AdvanceTrac® electronic stability control "Sport Mode" setting, 3.16:1 final drive ratio, Alcantara®-trimmed steering wheel, P245/45R20 Performance Summer Tire Compound¹ and tire sealant/inflation kit (n/a with Driver Assist Package)

Voice-activated Navigation System with integrated SiriusXM® Traffic and Travel Link® with 5-year subscription



20" Machined and Painted Aluminum Standard



20" 10-Spoke Machined and Low-Gloss Ebony-Painted Aluminum Available (no additional charge on SHO)

¹Ford does not recommend using summer tires when temperatures drop to approximately 40°F or below (depending on tire wear and environmental conditions) or in snow/ice conditions. If the vehicle must be driven in these conditions, Ford recommends using all-season or snow tires.

Exteriors



White Platinum Tri-coat Metallic



Oxford White



Ingot Silver



Ruby Red Tinted Clearcoat Metallic



Bronze Fire Tinted Clearcoat Metallic



Deep Impact Blue



Caribou



Magnetic



Dark Side



Tuxedo Black

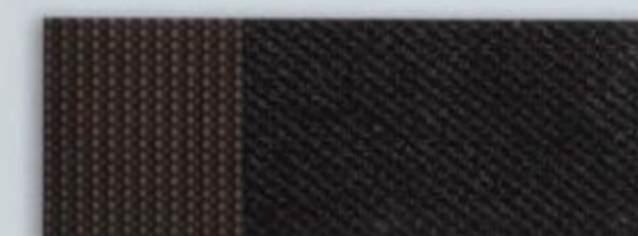
Interiors



1 Dune Cloth



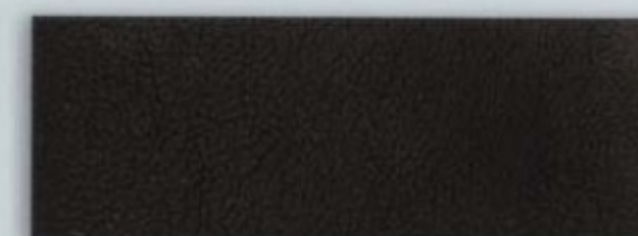
2 Dune Cloth



3 Charcoal Black Cloth



4 Dune Leather



5 Charcoal Black Leather



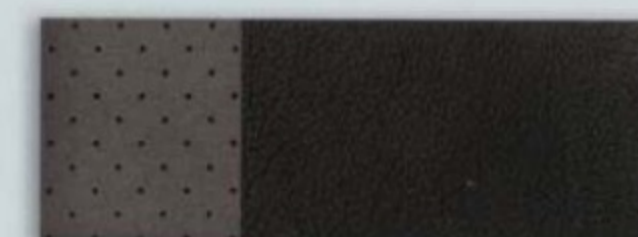
6 Dune Leather with Perforated Inserts



7 Charcoal Black Leather with Perforated Inserts



8 Charcoal Black Leather with Charcoal Black Perforated Inserts and front-seat embroidered "SHO" graphics



9 Charcoal Black Leather with Mayan Gray Miko® Suede Perforated Inserts and front-seat embroidered "SHO" graphics

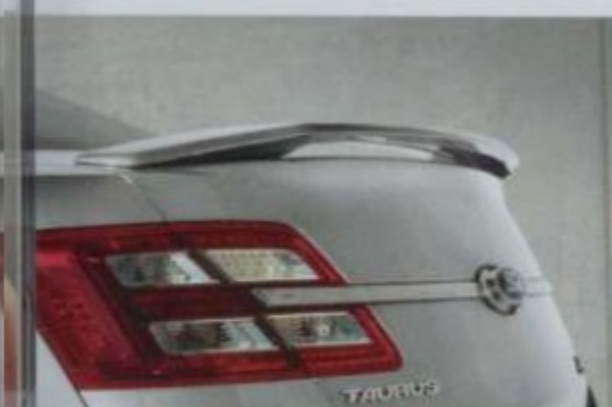
Exteriors	Interiors								
	SE	SEL				Limited		SHO	
White Platinum Tri-coat Metallic ¹		2	3	4	5	6	7	8	9
Oxford White	1	2	4						
Ingot Silver	1	2	3	4	5	6	7	8	9
Ruby Red Tinted Clearcoat Metallic ¹		2	3	4	5	6	7	8	9
Bronze Fire Tinted Clearcoat Metallic ¹		2	3	4	5	6	7	8	
Deep Impact Blue	1	2	3	4	5	6	7	8	9
Caribou	1	2	3	4	5	6	7		
Magnetic	1	2	3	4	5	6	7	8	9
Dark Side	1	2	3	4	5	6	7	8	9
Tuxedo Black	1	2	3	4	5	6	7	8	9

4, 5 Optional on SEL

¹Additional charge.
Colors are representative only. See your dealer for actual paint/trim options.

Bring these colors to life





SEL in Ingot Silver customized with smoked moonroof and side window deflectors, molded splash guards, chrome mirror caps and chrome-plated wheel lock kit

Sport pedals

All-weather floor mats

Remote Access

Rear spoiler

Exterior

- Flat splash guards
- Full vehicle cover¹
- Hood protector¹
- Locking fuel plug
- Rear spoilers

Interior

- Ash cup/coin holders
- Auto-dimming rearview mirror
- Cargo organizers and protectors
- Carpeted floor mats
- Interior light kit

Electronics

- Bumper-mounted warning sensor systems¹
- Portable DVD rear-seat entertainment systems¹
- Remote start systems
- Vehicle Security System



New Vehicle Limited Warranty. We want your Ford Taurus ownership experience to be the best it can be. Under this warranty, your new vehicle comes with 3-year/36,000-mile bumper-to-bumper coverage, 5-year/60,000-mile Powertrain Warranty coverage, 5-year/60,000-mile safety restraint coverage, and 5-year/unlimited-mile corrosion (perforation) coverage – all with no deductible. Please ask your Ford Dealer for a copy of this limited warranty.

Roadside Assistance. Covers your vehicle for 5 years or 60,000 miles, so you have the security of knowing that help may be only a phone call away should you run out of fuel, lock yourself out of the vehicle or need towing. Your Ford Dealer can provide complete details on all of these advantages.

Ford Credit. Get the ride you want. Whether you plan to lease or finance, you'll find the choices that are right for you at Ford Credit. Ask your Ford Dealer for details or check us out at fordcredit.com.

Ford Extended Service Plan. For a purchase or lease, the Ford Extended Service Plan (ESP) gives you peace-of-mind protection designed to cover key vehicle components and protect you from the cost of unexpected repairs. Ask your dealer for a Ford ESP, the only service contract backed exclusively by Ford and honored at all Ford Lincoln dealerships.

Insurance Services. Get Ford Motor Company quality in your auto insurance. Our program offers industry-leading benefits and competitive rates. Call 1-877-367-3847, or visit us at fordvip.com for a no-obligation quote. Insurance offered by American Road Services Company (in CA, American Road Insurance Agency), a licensed agency and subsidiary of Ford Motor Company.

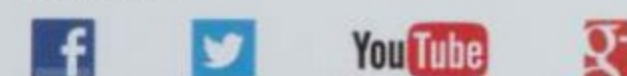
Genuine Ford Accessories will be warranted for whichever provides you the greatest benefit: 24 months/unlimited mileage, or the remainder of your Bumper-to-Bumper 3-year/36,000-mile New Vehicle Limited Warranty. Ford Licensed Accessories (FLA) are warranted by the accessory manufacturer's warranty. Ford Licensed Accessories are fully designed and developed by the accessory manufacturer and have not been designed or tested to Ford Motor Company engineering requirements. Contact your Ford Dealer for details and/or a copy of all limited warranties.

Comparisons based on competitive models (class is Full-Size Sedans, Non-Hybrid), publicly available information and Ford certification data at time of printing. Vehicles may be shown with optional equipment. Features may be offered only in combination with other options or subject to additional ordering requirements/limitations. Dimensions shown may vary due to optional features and/or production variability. Information is provided on an "as is" basis and could include technical, typographical or other errors. Ford makes no warranties, representations, or guarantees of any kind, express or implied, including but not limited to, accuracy, currency, or completeness, the operation of the information, materials, content, availability, and products. Ford reserves the right to change product specifications, pricing and equipment at any time without incurring obligations. Your Ford Dealer is the best source of the most up-to-date information on Ford vehicles.

After trial period expires, SiriusXM Satellite Radio, SiriusXM Traffic and Travel Link subscriptions are sold separately or as a package and are continuous until you call SiriusXM to cancel. See SiriusXM Customer Agreement for complete terms at www.siriusxm.com. SiriusXM Traffic and Travel Link available in select markets. For more information, see www.siriusxm.com/travellink or www.siriusxm.com/traffic. Sirius, XM and all related marks and logos are trademarks of Sirius XM Radio Inc. Alcantara is a registered trademark of Alcantara S.p.A., Italy. HD Radio is a proprietary trademark of iBiquity Digital Corp. iHeartAuto is a trademark owned by Clear Channel Broadcasting, Inc. All third party uses are authorized under license. iPod and iTunes are trademarks of Apple Inc., registered in the U.S. and other countries. Miko is a registered trademark of Miko s.r.l. PANDORA, the PANDORA logo, and the Pandora trade dress are trademarks or registered trademarks of Pandora Media, Inc. Used with permission. Sony is a registered trademark of the Sony Corporation. The Bluetooth word mark is a trademark of the Bluetooth SIG, Inc.

ford.com

Follow Ford:



 | FORD ACCESSORIES

accessories.ford.com

Ford Licensed Accessory.

©2014 Ford Motor Company Printed in USA. Please recycle.

Pat Milliken 



Pat Milliken Ford
9600 Telegraph Rd
Redford, MI 48239
Dealership: (313) 255-3100
Service: (313) 255-3130
www.patmillikenford.com

We're Pat Milliken Ford. And we go further for you. We're dedicated to serving you now and in the future. We've been in business for over 50 years. We're proud recipients of the prestigious President's Award. Our friendly staff is standing by to assist you. And our service department offers complimentary local shuttle service too. From vehicle test-drives and product demonstrations to personalized service and maintenance, we're committed to delivering a Ford ownership experience above and beyond your expectations.

Sales Hours

M 8:30 am - 9:00 pm
Tu 8:30 am - 6:00 pm
W 8:30 am - 6:00 pm
Th 8:30 am - 9:00 pm
F 8:30 am - 6:00 pm

Service Hours

M 7:30 am - 7:00 pm
Tu 7:30 am - 6:00 pm
W 7:30 am - 6:00 pm
Th 7:30 am - 6:00 pm
F 7:30 am - 6:00 pm

See our
Taurus
inventory



Mobile data rates may apply.

400096600041-02741-15TRSMYB