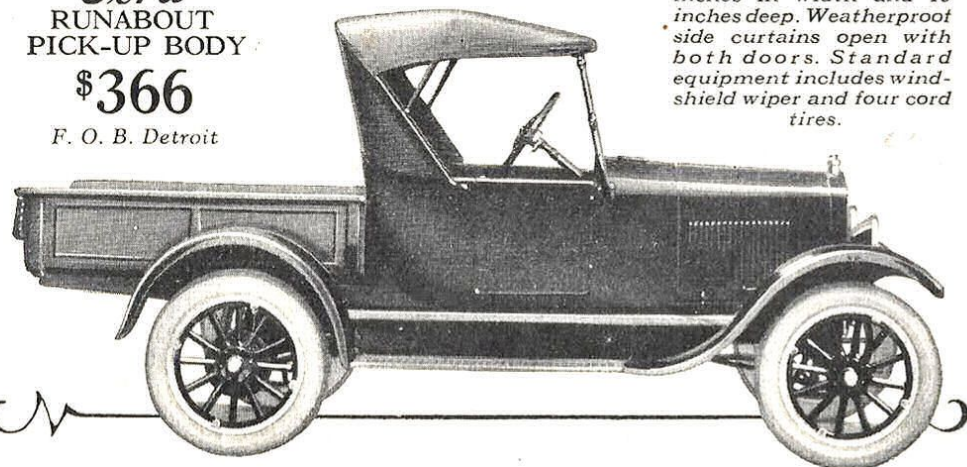


*Ford*  
**RUNABOUT  
 PICK-UP BODY**

**\$366**

F. O. B. Detroit

*Rear runabout deck is interchangeable with all-steel express type pick-up body 56 inches long, 40 $\frac{3}{4}$  inches in width and 13 inches deep. Weatherproof side curtains open with both doors. Standard equipment includes windshield wiper and four cord tires.*



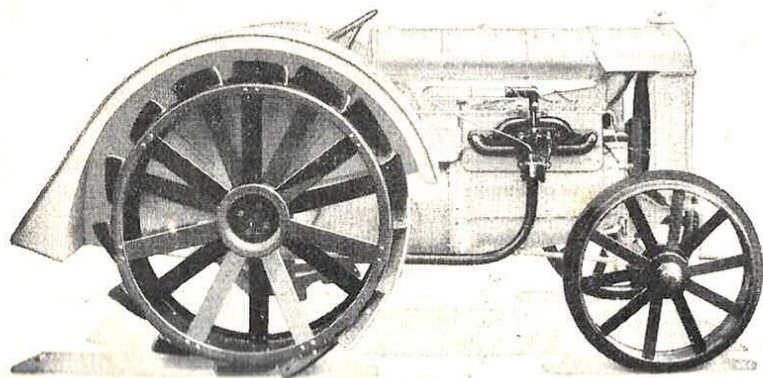
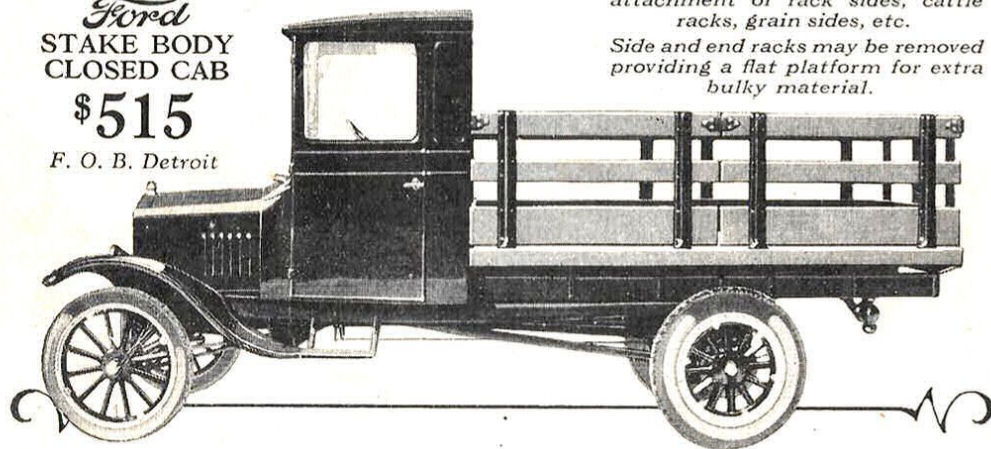
*Ford*  
**STAKE BODY  
 CLOSED CAB**

**\$515**

F. O. B. Detroit

*Stake sockets are provided for the attachment of rack sides, cattle racks, grain sides, etc.*

*Side and end racks may be removed providing a flat platform for extra bulky material.*



**Fordson  
 TRACTOR**

**\$495**

F. O. B. Detroit

*Four cylinder motor. Extra large bearings throughout. Splash system of lubrication. Starts with gasoline; once started the motor is operated by kerosene, supplied by gravity feed. Wheel base 63" width across rear wheels. 61 $\frac{1}{2}$ "*

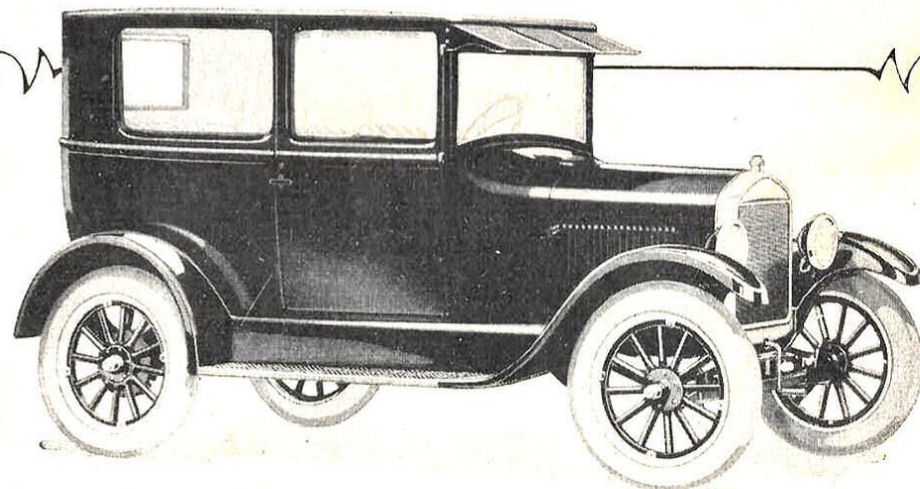
# Ford

## PRODUCTS

*The*  
**TUDOR SEDAN**

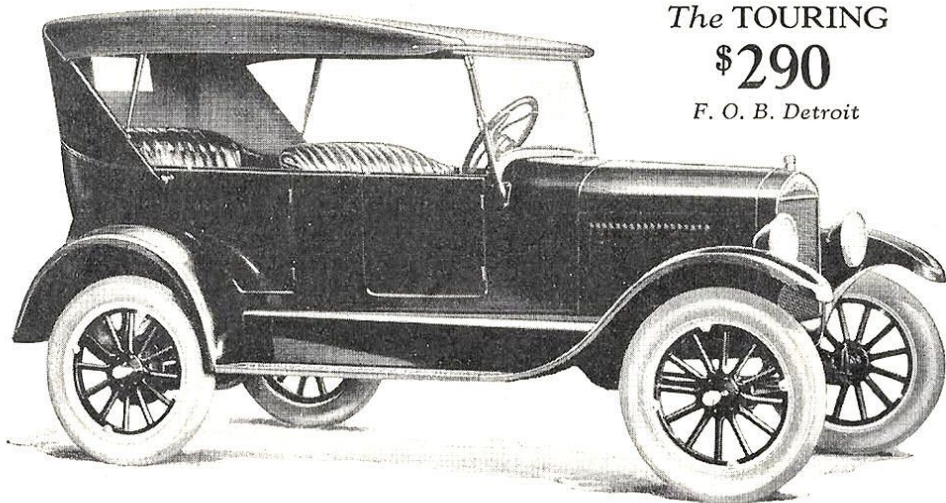
**\$580**

F. O. B. Detroit



*Color—Channel Green with interior upholstery to harmonize. All-steel body. Nickel-plated radiator and headlamp rims. Both front seats tilt forward. One-piece ventilating windshield. Plate glass windows with rotary lifts. Standard equipment includes starter, demountable rims, windshield wiper, hooded sun visor, rear view mirror, dash lamp and four cord tires. Balloon tires, \$25 extra.*





The TOURING

**\$290**

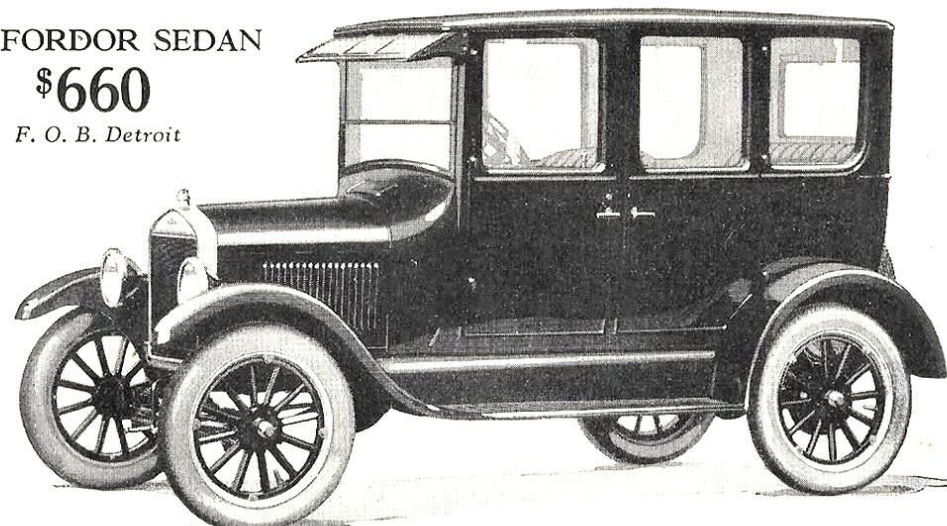
F. O. B. Detroit

Color—Black. All-steel body with pronounced streamline effect. Low, deeply-cushioned seats. Double ventilating windshield. One-man top. Standard equipment includes weatherproof side curtains opening with all four doors, windshield wiper, nicked headlamp rims and four cord tires. Starter and demountable rims, \$85 extra. Balloon tires, \$25 extra.

The FORDOR SEDAN

**\$660**

F. O. B. Detroit



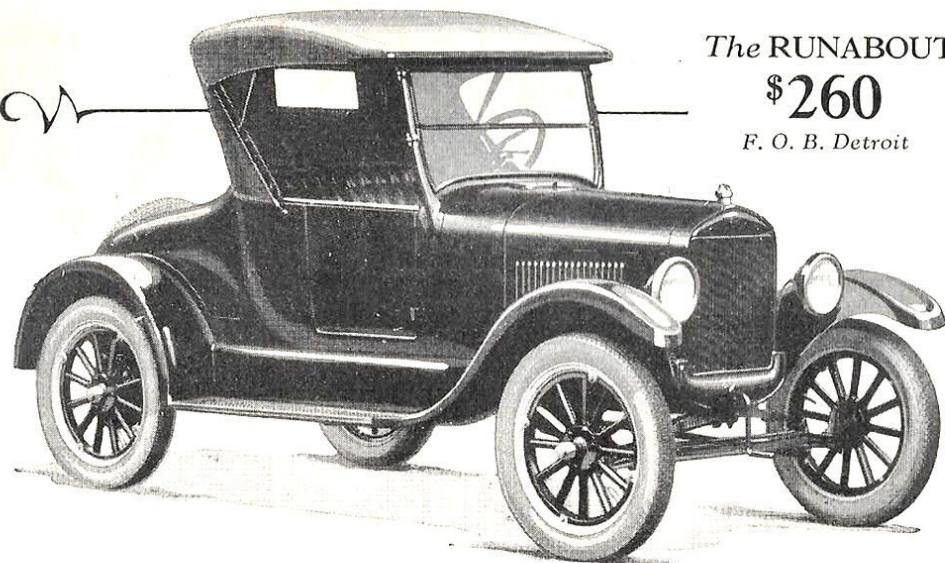
Color—Windsor Maroon with upholstery to harmonize. Composite body. Nicked radiator and headlamp rims. Double ventilating windshield. Plate glass windows with rotary lifts. Standard equipment includes silk curtains on rear windows, dome light, hooded sun visor, windshield wiper, rear view mirror, dash lamp, starter, demountable rims and four cord tires. Balloon tires, \$25 extra.

**Ford**

The RUNABOUT

**\$260**

F. O. B. Detroit

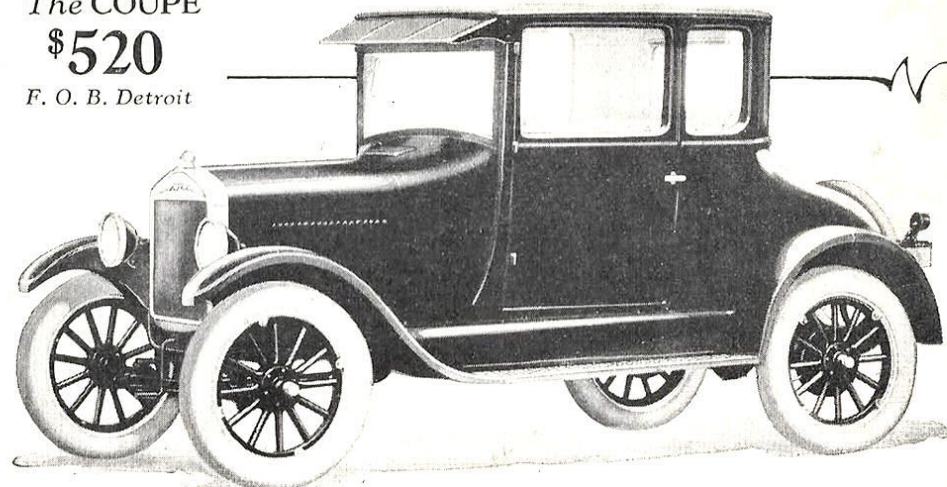


Color—Black. All-steel body with streamline treatment. Large compartment under the sweeping rear deck. Double ventilating windshield. Standard equipment includes weather-proof storm curtains opening with both doors, windshield wiper, nicked headlamp rims and four cord tires. Starter and demountable rims, \$85 extra. Balloon tires, \$25 additional.

The COUPE

**\$520**

F. O. B. Detroit



Color—Channel Green with upholstery to harmonize. All-steel body. Nicked radiator and headlamp rims. One-piece ventilating windshield and hooded sun visor. Plate glass windows with rotary lifts. Wide shelf behind seat for parcels. Large dust-proof rear deck compartment for luggage. Standard equipment includes starter, windshield visor, rear view mirror, dash lamp and four cord tires. Balloon tires, \$25 extra.