

# C E L E B R I T Y

1 9 8 8 C H E V R O L E T



# CELEBRITY

## CONTENTS



### 4 CELEBRITY SEDAN/COUPE

Front-drive traction. Fuel-injected power. And room for six. Even the most affordable Celebrity models are well engineered, well-equipped mid-size cars.

### 6 CELEBRITY STANDARD INTERIOR

The spacious Celebrity interior offers the comforts and appointments you might not expect in a standard trim level.



### 8 CELEBRITY EUROSPORT

The fiery red striping and blackout decor tell you immediately this is no ordinary sedan. This is Eurosport, the sophisticated road car from Chevrolet.

### 12 CELEBRITY WAGON

The most versatile Celebrity of all, with up to 75.1 cu. ft. of cargo space.



	Page
Celebrity Sedan/Coupe	4
Celebrity Standard Interior	6
Celebrity Eurosport	8
Celebrity CL Interior	10
Celebrity Wagons	12
Standard Features/Dimensions	16
Optional Equipment	18
Safety Features/Additional Information	20

Shown on cover: Celebrity Eurosport Sedan with optional aluminum wheels.



# C E L E B R I T Y

1 9 8 8

At a time when cars are often too small or too large for their intended uses, the mid-size Chevrolet Celebrity has proved to be exactly the right size for many people.

Trim exterior dimensions make the front-drive Celebrity easy to park and maneuver. Yet it offers generous interior space for six adults, a large trunk and snappy fuel-injected performance.

No wonder Chevy Celebrity is one of America's favorite cars.

## Celebrity Model Choices

You want an automobile that will anticipate your needs, but still reflect your personal style. So Celebrity offers three body styles and a wide array of optional equipment. Select from:

- **Celebrity Sedan**, one of the most popular shapes on the American road, offering impressive style and four-door convenience.
- **Celebrity Coupe**. Combines a sporty appearance with six-passenger interior spaciousness.

- **Celebrity Wagon**. Carries up to 75.1 cu. ft. of cargo. Or up to eight passengers with the available rear-facing third seat.
- **The optional Eurosport package**. Available on all three Celebrity body styles. It combines a performance-tuned suspension with distinctive interior/exterior decor.
- **A variety of convenient option packages** and individually available options to let you "build" a Celebrity to your specific needs.

## Celebrity Power Teams

For 1988, smooth fuel-injected performance is standard across the board. Choose:

- **The popular 2.5 Liter Tech IV engine** with Electronic Fuel Injection and 3-speed automatic transmission. Standard on all models.
- **Or select the optional 2.8 Liter V6** with Multi-Port Fuel Injection. This V6 may be teamed with a Getrag-licensed 5-speed manual transmission (Eurosport only), 3-speed automatic or a 4-speed automatic overdrive.

## Extensive Anti-Corrosion Protection

The 1988 Celebrity is carefully designed and built to resist corrosion, so the application of additional rustproofing is neither necessary nor required. Chevrolet's confidence in its extensive anti-corrosion protection is reflected in a new-car warranty which includes 6-year/100,000-mile rust-through protection. See your dealer for terms and conditions of the limited warranty.

## Celebrity Value

In today's competitive auto market, one secret to Celebrity's success is the way it delivers so much unexpected value...at an affordable Chevrolet price.



Available Coupes  
Celebrity Coupe.  
Celebrity Eurosport Coupe (shown).

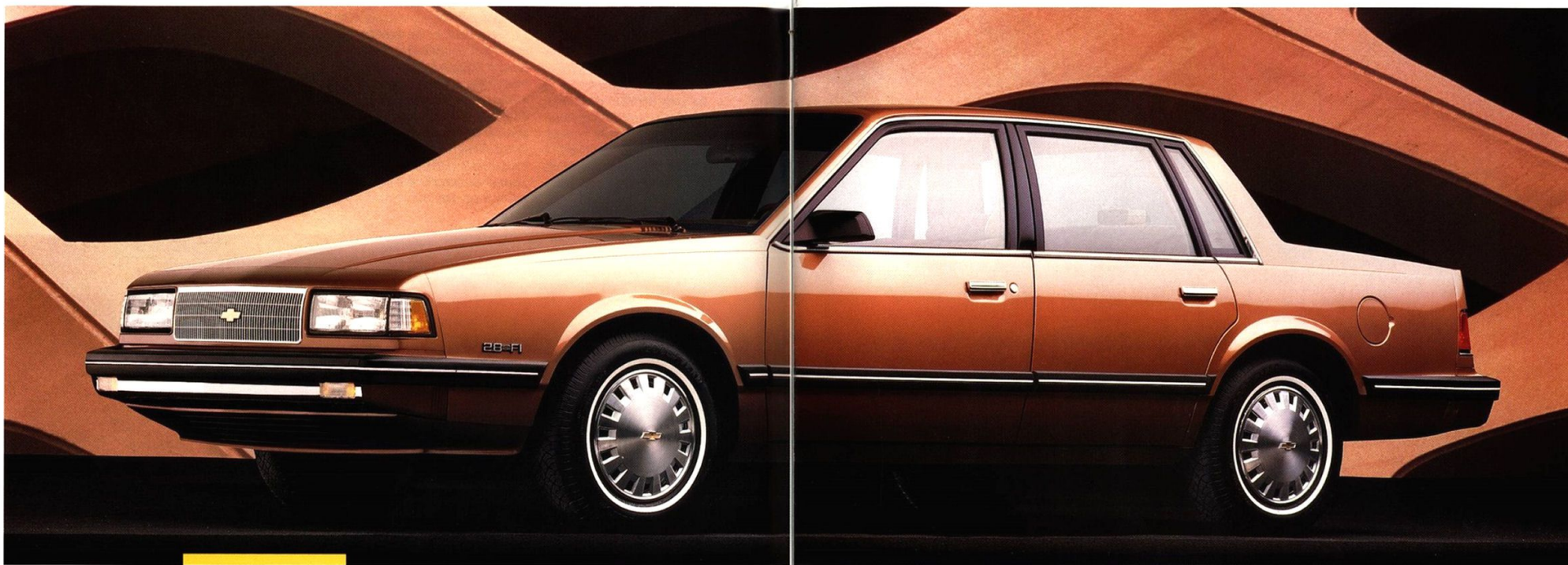
Available Sedans  
Celebrity Sedan (shown).  
Celebrity Eurosport Sedan.

Available Wagons  
Celebrity Wagon.  
Celebrity Eurosport Wagon (shown).



# C E L E B R I T Y

S E D A N / C O U P E



Celebrity Sedan.

Just how good can a mid-size car be? Let the standard Celebrity demonstrate, with its artful blend of function, fun and value.

## The Equipment You Want...Standard

The following features are standard on every Celebrity:

• 2.5 Liter Tech IV engines with Electronic Fuel Injection. This

proven 98-HP engine features new internal balance shafts for especially smooth, quiet performance.

- Automatic transmission.
- Power rack-and-pinion steering and front stabilizer bar for precise road manners.
- Power front disc/rear drum brakes.
- All-season steel-belted radial ply tires.

• Dual sport mirrors, left-hand remote.

• Tinted glass, all windows.

• Chevrolet's limited 6-year/60,000-mile warranty (see page 20 for details).

• Corrosion protection so complete you won't need aftermarket "rustproofing."

## The Style You Want...Standard

Celebrity's clean lines, with sloping hood line and high rear deck, are the result of extensive wind-tunnel testing. Exterior details include:

- A thin-pillar design for excellent visibility.
- Flush-mounted windshield and rear window moldings for improved

air flow.

- Composite-style halogen headlamps with replaceable bulbs.
- Full wheel covers.
- Protective body-side moldings.

Now, turn the page and take a look inside the standard Celebrity.



Celebrity Coupe with optional Sport wheel covers.



# CELEBRITY

## STANDARD INTERIOR



Celebrity instrument panel with standard Delco AM/FM stereo.

It's easy to get comfortable in Celebrity's spacious, well-appointed standard interior. Features include:

- Foam-cushioned seating for six with plenty of head, leg and hip room.
- A full-width front bench seat with convenient pull-down center armrest.
- Attractive cloth trim in Dark Blue, Light Brown, Maroon or Gray. All-vinyl trim standard on Wagons, optional on Coupes and Sedans.
- Delco AM/FM stereo sound system with digital clock and premium rear speakers.\*
- Tinted glass, all windows.
- Flow-through power ventilation with side window defoggers.
- Headlamps-on reminder tone.

- Lockable glove box with light.
- Deluxe color-keyed seat and shoulder belts.

### Optional Seat Styles

If you prefer more individualized comfort, choose from a 55:45 split front seat with folding center armrest, or fully reclining front bucket seats with center console.

\*May be deleted for credit.



Standard Celebrity interior.



# CELEBRITY

EUROSPORT



Eurosport Sedan with optional cast-aluminum wheels.

The assignment was clearly stated: Create an affordable sport sedan in the performance tradition of Corvette and Camaro. Eurosport is that sedan, as one test drive will confirm.

## The Making of a Eurosport

First choose a Celebrity Sedan, a Celebrity Coupe, or a Celebrity

Wagon. Then add Eurosport equipment. It includes:

- The acclaimed F41 Sport Suspension, retuned to provide improved steering feel and ride control.
- Quick-ratio power steering.
- Larger P195/75R-14 all-season steel-belted radial ply tires.
- Blackout exterior trim with red

accent striping.

- Rally Wheels with trim rings, specific hub inserts and black lug nuts.
- Padded sport steering wheel.
- Black-finish instrument panel trim plate with Eurosport identification.

## Sporting Propositions

You may also wish to enhance



Eurosport interior with the following options: front bucket seats, center console, power windows and power door locks.

Eurosport's sporting character by selecting one or more of the following options:

- The 2.8 Liter V6 with Multi-Port Fuel Injection, 125 HP at 4500 RPM.
- A smooth-shifting 5-speed manual transmission.\*
- Bucket seats with console.
- 14" aluminum wheels.

- New Goodyear Eagle GT + 4 tires. These high-performance tires are an all-season design.
- Special Instrumentation, including voltmeter, temperature gage and trip odometer. A tachometer is also optional.

\*With optional 2.8 Liter V6 only. Automatic transmission standard with 2.5 Liter Tech IV.



# C E L E B R I T Y

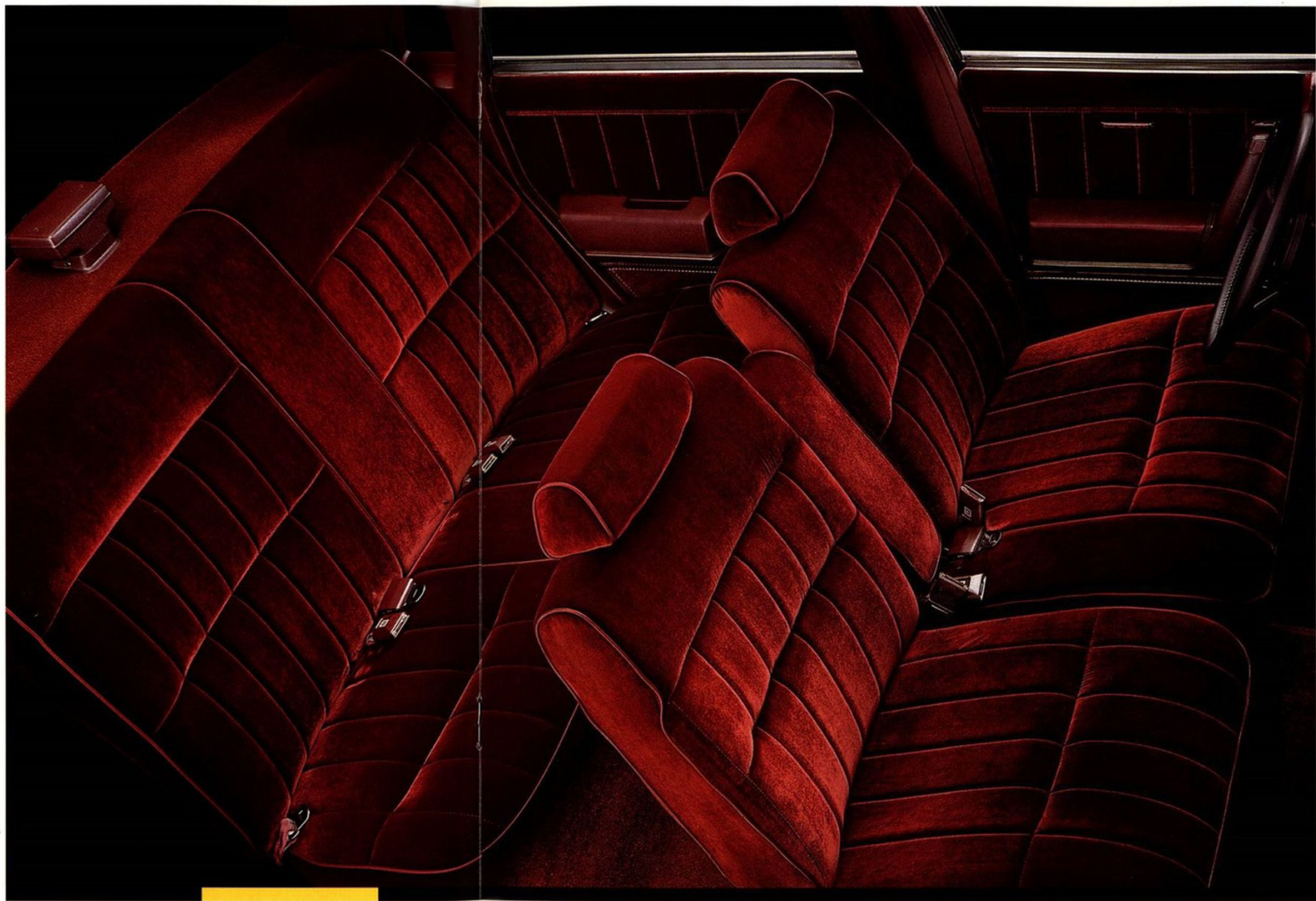
## C L I N T E R I O R

The optional Custom CL trim adds an even more exclusive appearance to the Celebrity interior.

Features of this up-level trim package, available in all models, include:

- Deeply contoured seats upholstered in plush velour. Available colors: Dark Blue, Gray, Maroon and Light Brown.
- A choice of a 55/45 split front seat with pull-down center armrest or a 45/45 split front seat with center console.
- Custom velour door panels with carpeted lower area.
- CL nameplate on rear deck lid.

Unexpected elegance in a contemporary mid-size car. That's Chevrolet Celebrity with the Custom CL interior option.



Optional Custom CL interior shown with 55/45 split-bench front seat.



# CELEBRITY

WAGONS



Celebrity Eurosport Wagon with optional roof carrier and aluminum wheels.



Celebrity Wagon with optional wire wheel covers and roof carrier.

Wagon buyers have helped make Celebrity one of America's favorite cars. It's easy to see why. Highlights of Celebrity Wagon features include:

- Confidence-building front-drive traction.
- The choice of a standard 2.5 Liter Tech IV engine with Electronic Fuel Injection or optional 2.8 Liter V6 with Multi-Port Fuel Injection.
- Standard seating for six.
- Seating for up to eight with the available rear-facing third seat.
- All-vinyl trim. Cloth optional.
- Up to 75.1 cu. ft. of cargo space with both rear seats folded flat.
- Carpeted load floor.
- Rear-quarter storage compartment.

## Wagon Options

Make Celebrity Wagon even more versatile by selecting from the following list of options:

- Roof carrier.
- Power liftgate release.
- Split-folding rear seat (included with CL interior option).
- Rear-window wiper/washer.
- A rear-window air deflector that helps keep window clean.

For complete information on Celebrity Wagon option packages and individually available options, see pages 18-19.

## Celebrity Eurosport Wagon

Eurosport, the original American sport wagon, continues into 1988 with style and performance to set it apart from the traditional. See page 18 for information on Eurosport Package content.



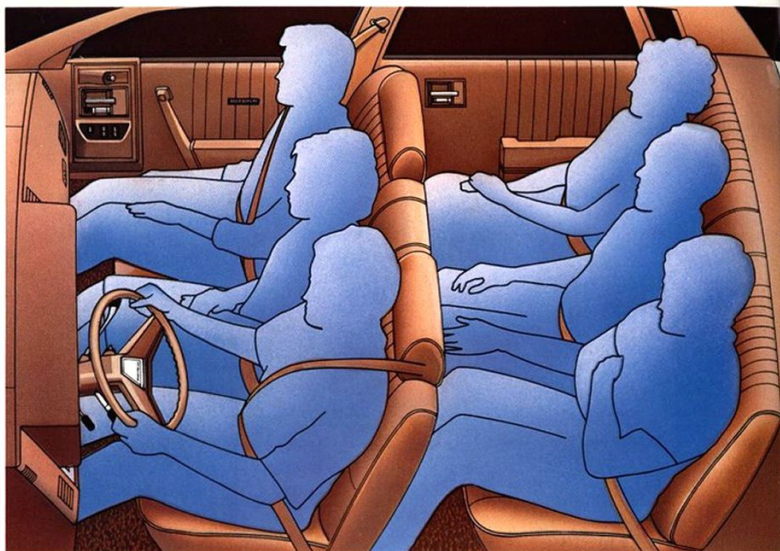
# CELEBRITY

VERSATILITY

## Quiet, Comfortable

Celebrity offers:

- Generous head, hip, shoulder and leg room for all occupants.
- More than 3,600 sq. in. of glass area for excellent visibility (Sedan).
- Roll-down windows in every door.
- Extensive sound insulation and rugged unitized body/frame construction to help deliver a hushed ride.



The standard Celebrity comfortably accommodates six passengers.

## A Large Trunk

The spacious, fully carpeted trunk holds up to 16.2 cu. ft. of luggage.

## Standard Tech IV Engine

A standard 2.5 Liter Tech IV engine with Electronic Fuel Injection provides smooth, responsive performance that may surprise you. Features of this 98-HP engine include:

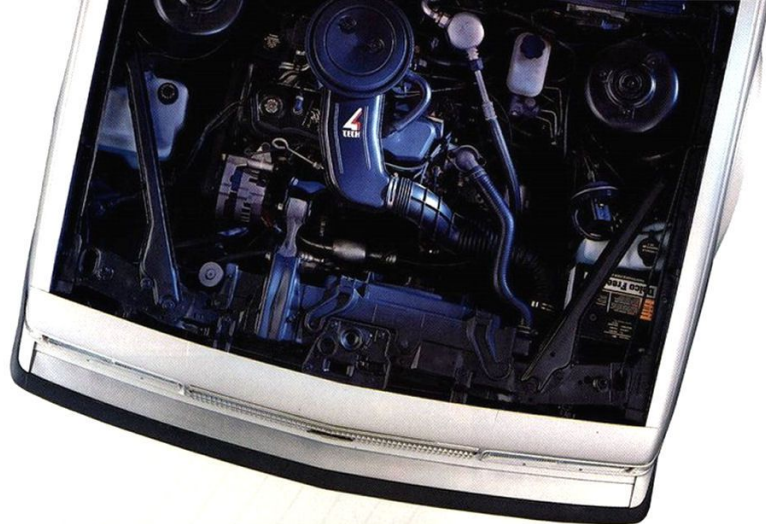
- New internal balance shafts which give the Tech IV exceptional smoothness throughout its power curve.

- Reduced maintenance with Electronic Fuel Injection (no choke, accelerator pump or carburetor to adjust).
- Computerized idle adjustment for quick engine response in any weather.
- Simple "turn-key" starting, hot or cold.
- A computer-controlled coil ignition system to help eliminate periodic timing adjustments.
- A single belt with built-in tensioner which drives all accessories and is designed to never need adjustment.



Celebrity's fully carpeted trunk holds up to 16.2 cu. ft. of luggage.

The standard 2.5 Liter Tech IV engine features Electronic Fuel Injection.



## Optional 2.8 Liter V6

The high-output 2.8 Liter V6 with Multi-Port Fuel Injection is optional on all Celebrity models. Horsepower is 125 at 4500 RPM. This advanced V6 design features:

- Multi-Port Fuel Injection. This state-of-the-art fuel management system is designed around six individual runners that feed maximum air to each cylinder. A computerized module controls each injector and continuously monitors and compensates for changes in air mass, altitude, temperature and humidity.
- Aluminum cylinder heads with fast-burn combustion chambers, centralized spark plugs and canted valves to provide excellent engine "breathing."
- Engine "ping" is virtually eliminated by the distributorless computer-controlled coil ignition system that calculates exact spark timing.
- A single-belt accessory drive designed to never need adjustment.
- Choice of a 3-speed automatic, 4-speed automatic overdrive or smooth-shifting 5-speed manual (Eurosport only) with this engine.



Optional 2.8 Liter V6 with Multi-Port Fuel Injection.

## POWER TEAMS

ENGINES	Ordering Code	Engine Availability	Automatic Transmissions		5-Speed Manual Transmission
			3-Speed	4-Speed w/OD	
2.5 Liter Tech IV L4 with EFI*	LR8	S	S	NA	NA
2.8 Liter V6† with MFI†	LB6	O	S**	O	O††

S: Standard O: Optional NA: Not Available \*Electronic Fuel Injection

†Multi-Port Fuel Injection \*\*NA Wagons ††Credit option, Eurosport only

† Produced in U.S.A., Canada and Mexico.



# CELEBRITY

STANDARDS / COLORS

New standard features, including a Delco AM/FM stereo sound system,\* tinted glass and dual sport mirrors, make the 1988 Celebrity the best-equipped mid-size car in Chevrolet history.



Delco AM/FM stereo with premium rear speakers and digital clock.\*



Composite halogen headlamps.



Full wheel covers.



All-season steel-belted radial tires (optional whitewall shown).

DIMENSIONS (in.)	Sedan	Coupe	Wagon
Wheelbase	104.9	104.9	104.9
Length (overall)	188.3	188.3	190.8
Width (overall)	69.3	69.3	69.3
Height (loaded)	54.1	54.1	54.3
Head Room — Front	38.6	38.6	38.6
Head Room — Rear	38.0	37.9	38.9
Leg Room — Front	42.1	42.1	42.1
Leg Room — Rear	36.4	36.1	35.6
Hip Room — Front	52.4	52.3	52.4
Hip Room — Rear	52.7	53.6	52.7
Shoulder Room — Front	56.2	55.9	56.2
Shoulder Room — Rear	56.2	57.1	56.2
Luggage/Cargo Capacity (cu. ft.)	16.2	16.2	75.1*
Fuel Tank Capacity (gals.)	15.7	15.7	15.7

\*With second seat down.

## Celebrity

Features include:

- All-season steel-belted radial tires with tread wear indicators
- Anti-chip protective coating applied to lower body
- Ashtray and glove box lamps
- Composite headlamps
- Color-keyed interiors and safety belts
- Corrosion protection: Two-side-galvanized steel on most body panels
- Delco AM/FM stereo sound system with premium rear speakers and digital clock\*
- Dome lamp switches on front doors
- Double-panel doors with side guard door beams
- Double-panel hood, deck and tailgate construction
- Dual horns
- Electrically calibrated speedometer
- Extensive use of corrosion-resistant precoated steels, galvanized steel and aluminum
- Flow-through ventilation system with side window defoggers
- Foot-operated parking brake
- Full wheel covers
- Headlamp-on warning buzzer
- Inner fenders to protect outer fenders
- Lockable glove compartment
- Low-profile tunnel in foot areas
- MacPherson-strut front suspension

\*May be deleted for credit.

- Maintenance-free wheel bearings
- P185/75R-14 blackwall tires
- Power disc/drum self-adjusting brake system with audible disc brake wear indicators
- Power rack-and-pinion steering
- Power ventilation system
- Roll-down, curved side-window door glass
- Side window defoggers
- Steering-column-mounted dimmer/washer/wiper switch on turn signal control
- 3-speed automatic transmission.

## Celebrity Eurosport

In addition to or replacing standard Celebrity equipment:

- Eurosport Sedan, Coupe and Wagon models offered in a wide choice of colors
- Red center accent stripe in body-side moldings and bumper rub strips
- Rally Wheels with trim rings and specific hub insert and black lug nuts
- Exterior Eurosport identification
- Specific instrument panel nameplate, Sport steering wheel and black finished instrument panel trim plate
- Special F41 Sport Suspension with specifically tuned shock absorbers and struts
- P195/75R-14 all-season steel-belted radial tires
- Quick-ratio power steering.

## Celebrity CL

In addition to or replacing standard Celebrity equipment:

- 55/45 or 45/45 seats in velour CL Custom Trim
- Velour door trim with carpeted lower panel
- CL nameplate on deck lid.

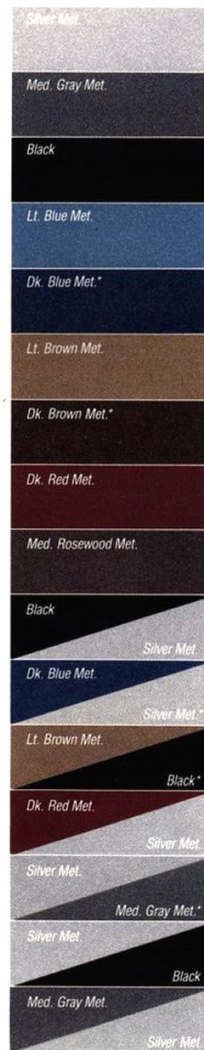
COLOR & TRIM SELECTIONS		INTERIOR COLORS			
Model	Seat Type	Dark Blue	Gray	Maroon	Light Brown
All Celebrity and Celebrity Eurosport Models	Vinyl Bench	■	■		■
	Cloth Bench*	■	■	■	■
	Cloth 55-45*	■	■	■	■
	Cloth Bucket*	■	■	■	■
	Custom Cloth 55-45 (CL)†	■	■	■	■
	Custom Cloth 45-45 (CL)†	■	■	■	■

\*Third seat vinyl trimmed on 3-seat station wagon models. Includes split individual folding second seat-back on wagons.

CELEBRITY		INTERIOR COLORS			
EXTERIOR COLORS		Dark Blue	Gray	Maroon	Light Brown
Black			■	■	■
Dark Blue Metallic		■	■		
Light Blue Metallic		■			
Light Brown Metallic				■	
Dark Brown Metallic				■	
Medium Gray Metallic			■	■	
Dark Red Metallic			■	■	■
Medium Rosewood Metallic				■	
Silver Metallic		■	■	■	
White		■	■	■	■
CUSTOM TWO-TONE COLORS					
Black/Silver Metallic			■	■	
Dark Blue Metallic/Silver Metallic		■	■		
Light Brown Metallic/Black					■
Dark Red Metallic/Silver Metallic			■	■	
Silver Metallic/Medium Gray Metallic		■	■	■	

CELEBRITY EUROSPORT		INTERIOR COLORS			
EXTERIOR COLORS		Dark Blue	Gray	Maroon	Light Brown
Medium Gray Metallic			■		
Light Blue Metallic		■			
Dark Red Metallic			■	■	■
White		■	■	■	■
Silver Metallic		■	■	■	
Black			■	■	■
Medium Rosewood Metallic				■	
Light Brown Metallic					■
CUSTOM TWO-TONE COLORS					
Silver Metallic/Black			■	■	
Dark Red Metallic/Silver Metallic			■	■	
Medium Gray Metallic/Silver Metallic			■	■	
Black/Silver Metallic			■	■	

White



\*Not available Eurosport



# CELEBRITY

## OPTIONS

Convenient option packages make it easy to tailor Celebrity to your exact specifications. Choose the model and the package containing the equipment you desire, then

select from the list of individually available options. It's that simple.

OPTION PACKAGES			
Celebrity Coupe/Sedan Option Packages (Additional options may be ordered from individual option listing only)			
	1	2	3
Standard Equipment Package 1	■		
Option Package 2			
Air Conditioning	■	■	
Comfortilt Steering Wheel	■	■	
Electronic Speed Control with Resume Speed	■	■	
Exterior Molding Package	■	■	
Floor Mats, Front and Rear	■	■	
Intermittent Wipers	■	■	
Option Package 3			
Auxiliary Lighting	■		
Bumper Guards	■		
Door Edge Guard Molding, Black	■		
Gage Package with Trip Odometer	■		
Power Door Locks	■		
Power Trunk Opener	■		
Power Windows	■		
Sport Mirrors, Twin Remote	■		

OPTION PACKAGES			
Celebrity Wagon Option Packages (Additional options may be ordered from individual option listing only)			
	1	2	3
Standard Equipment Package 1	■		
Option Package 2			
Air Conditioning	■	■	
Comfortilt Steering Wheel	■	■	
Electronic Speed Control with Resume Speed	■	■	
Exterior Molding Package	■	■	
Floor Mats, Front and Rear	■	■	
Intermittent Wipers	■	■	
Power Liftgate Release	■	■	
Roof Carrier	■	■	
Option Package 3			
Auxiliary Lighting	■		
Bumper Guards	■		
Door Edge Guard Molding, Black	■		
Gage Package with Trip Odometer	■		
Power Door Locks	■		
Power Windows	■		
Radio, AM/FM Stereo w/Seek and Scan, Stereo Cassette Tape Player and Digital Clock w/ERS** System†	■		
Rear Compartment Decor, Deluxe	■		
Security Package, Cargo Area	■		
Sport Mirrors, Twin Remote	■		

Celebrity Eurosport Coupe/Sedan Option Packages (Additional options may be ordered from individual option listing only)			
	1	2	3
Standard Equipment Package 1	■		
Eurosport Package	■	■	■
Option Package 2			
Air Conditioning	■	■	■
Comfortilt Steering Wheel	■	■	■
Electronic Speed Control with Resume Speed	■	■	■
Exterior Molding Package	■	■	■
Floor Mats, Front and Rear	■	■	■
Gage Package with Trip Odometer	■	■	■
Intermittent Wipers	■	■	■
Option Package 3			
Auxiliary Lighting	■		
Door Edge Guard Molding, Black	■		
Power Door Locks	■		
Power Trunk Opener	■		
Power Windows	■		
Radio, AM/FM Stereo w/Seek and Scan, Stereo Cassette Tape Player and Digital Clock w/ERS** System†	■		
Sport Mirrors, Twin Remote	■		

Celebrity Eurosport Wagon Option Packages (Additional options may be ordered from individual option listing only)			
	1	2	3
Standard Equipment Package 1	■		
Eurosport Package	■	■	■
Option Package 2			
Air Conditioning	■	■	■
Comfortilt Steering Wheel	■	■	■
Electronic Speed Control with Resume Speed	■	■	■
Exterior Molding Package	■	■	■
Floor Mats, Front and Rear	■	■	■
Gage Package with Trip Odometer	■	■	■
Intermittent Wipers	■	■	■
Power Liftgate Release	■	■	■
Roof Carrier	■	■	■
Option Package 3			
Auxiliary Lighting	■		
Cargo Area Security Package	■		
Door Edge Guard Molding, Black	■		
Power Door Locks	■		
Power Windows	■		
Radio, AM/FM Stereo w/Seek and Scan, Stereo Cassette Tape Player and Digital Clock w/ERS** System†	■		
Rear Compartment Decor, Deluxe	■		
Sport Mirrors, Twin Remote	■		

\*Extended Range Sound. †May be deleted for credit.



Wire wheel covers.



Sport wheel covers.



Rally Wheels (Standard Eurosport).



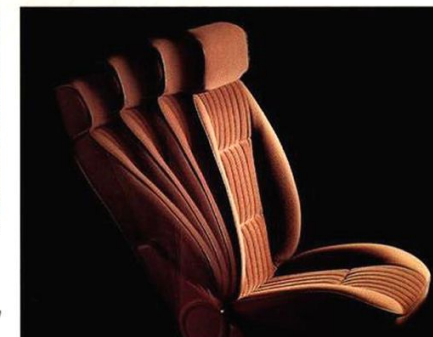
Aluminum wheels.



Delco AM/FM stereo with cassette tape player.



Optional power door locks and power windows.



Optional reclining front bucket seat.



Wagon rear window washer/wiper.

- Rear Window Wiper/Washer (NA w/Air Deflector) (Wagons Only)
- Tachometer (Eurosport only)
- Wheels/Tires:  
Aluminum Wheels  
P185/75R-14 Whitewall Tires (NA Eurosport)

**Individually Available Options**  
(May be added with any option package.)

- Air Conditioning (All Models)
- Air Deflector (Wagons Only)
- Custom Two-Tone Paint (Includes Exterior Molding Package)
- Engine Block Heater
- Heavy-Duty Battery
- Heavy-Duty Cooling (Included w/Air Conditioning)
- Inflatable Rear Shock Absorbers
- Pin Striping
- Power Door Locks, (All Models)
- Power Seats, Driver Side (Reqs. 55/45 or 45/45 Seat)
- Power Windows
- Radio, AM/FM Stereo w/Seek and Scan, Stereo Cassette Tape Player and Digital Clock w/ERS\* System
- Rear Window Defogger

P195/70R-14 Raised Black-Letter Tires (Eurosport only)  
P195/75R-14 Blackwall Tires (Standard Eurosport)  
P195/75R-14 Whitewall Tires (NA Eurosport)  
Rally Wheels (Standard Eurosport)  
Sport Wheel Covers (NA Eurosport)  
Wire Wheel Covers (NA Eurosport)

\*Extended Range Sound



## Safety Features

### Occupant Protection

- Manual lap/shoulder safety belts for driver and right front passenger (driver side includes visual and audible warning system)
- Manual lap safety belts at each rear-seat position (and center front, when applicable)
- Energy-absorbing steering column
- Energy-absorbing instrument panel
- Energy-absorbing seat-back tops, front
- Laminated safety windshield glass
- Safety interlocking door latches
- Side-guard door beams
- Passenger-guard inside door lock handles
- Inertia-locking, folding front seat-backs on two-door models
- Safety armrest
- Head restraints, driver and right front passenger (adjustable).

### Accident Avoidance

- Side marker lights and reflectors
- Parking lamps that illuminate with headlamps
- Four-way hazard warning flasher
- Backup lights
- Center high-mounted stop lamp
- Directional signal control with lane-change feature
- Windshield defroster, washer and multi-speed wipers
- Inside rearview mirror
- Outside left and right rearview mirrors
- Brake system with dual master cylinder and warning light
- Starter safety switch
- Dual-action hood latch
- Low-glare finish on inside windshield moldings, wiper arms and blades, metallic steering wheel surfaces
- Illuminated heater and defroster controls
- Illuminated windshield wiper and washer controls
- Tires with built-in tread-wear indicators.

### Theft Deterrence

- Audible reminder for ignition key removal
- Theft-deterrent steering column lock
- Visible vehicle identification number.

### Important: A Word About This Catalog.

We have tried to make this catalog as comprehensive and factual as possible. However, since the time of

printing, some of the information may have been updated. Also, some of the equipment shown or described throughout this catalog is available at extra cost. Your dealer has details and, before ordering, you should ask him to bring you up to date. The right is reserved to make changes at any time, without notice, in prices, colors, materials, equipment, specifications and models. Check with your Chevrolet dealer for complete information.

### A Word About Assembly, Components and Optional Equipment in These Chevrolets.

The Chevrolets described in this catalog are assembled at facilities operated by General Motors or GM of Canada. These vehicles incorporate thousands of different components produced by car groups and various component divisions of General Motors, and by various suppliers worldwide to General Motors. From time to time during the manufacturing process, it may be necessary in order to meet public demand for particular vehicles or equipment, or to meet federally mandated emissions, safety and fuel economy requirements, or for other reasons, to produce Chevrolet products with different components or differently sourced components than initially scheduled. All such components have been approved for use in Chevrolet products and will provide the quality performance associated with the Chevrolet name.

With respect to extra-cost optional equipment, make certain you specify the type of equipment you desire on your vehicle when ordering it from your dealer. Some options may be unavailable when your car is built. Your dealer receives advice regarding current availability of options. You may ask your dealer for this information. GM also requests the dealer to advise you if an option you ordered is unavailable. We suggest that you verify that your car includes

the optional equipment you ordered or, if there are changes, that they are acceptable to you.

### A Word About Engines.

Chevrolets are equipped with engines produced by GM or suppliers to GM worldwide.

### Chevrolet's Best Protection Plan Ever.

A 6-year/60,000-mile warranty demonstrates the confidence Chevrolet has in Celebrity quality. This new limited warranty covers powertrains for 6 years/60,000 miles and includes 6-year/100,000-mile rust-through protection. See your Chevrolet dealer for the terms and conditions of this limited warranty.

### GM Protection Plan

The GM Protection Plan offers service protection in addition to that provided by GM's new-vehicle limited warranty. Ask your dealer about it. Coverage available only in U.S. and Canada.

### A Word About Updated Service Information.

Chevrolet regularly sends its dealers useful service bulletins about Chevrolet products. Chevrolet monitors product performance in the field. We then prepare bulletins for servicing our products better. Now you can get these bulletins, too. Ask your dealer. To get ordering information, call toll-free 1-800-551-4123.

More Dealers to Serve You. With nearly 5,000 servicing dealers nationwide, Chevrolet offers a more extensive parts/service network than any other automaker.

At your Chevrolet dealer's, financing or leasing your new Celebrity can be as easy as saying GMAC.

Let's get it  
together  
buckle up



AUGUST 1987

LITHO IN U.S.A. 4726



THE  
*Heartbeat*  
OF  
AMERICA.  
TODAY'S CHEVROLET





# C E L E B R I T Y

1 9 8 8 C H E V R O L E T

THE  
*Heartbeat*  
OF  
AMERICA  
TODAY'S CHEVROLET 

