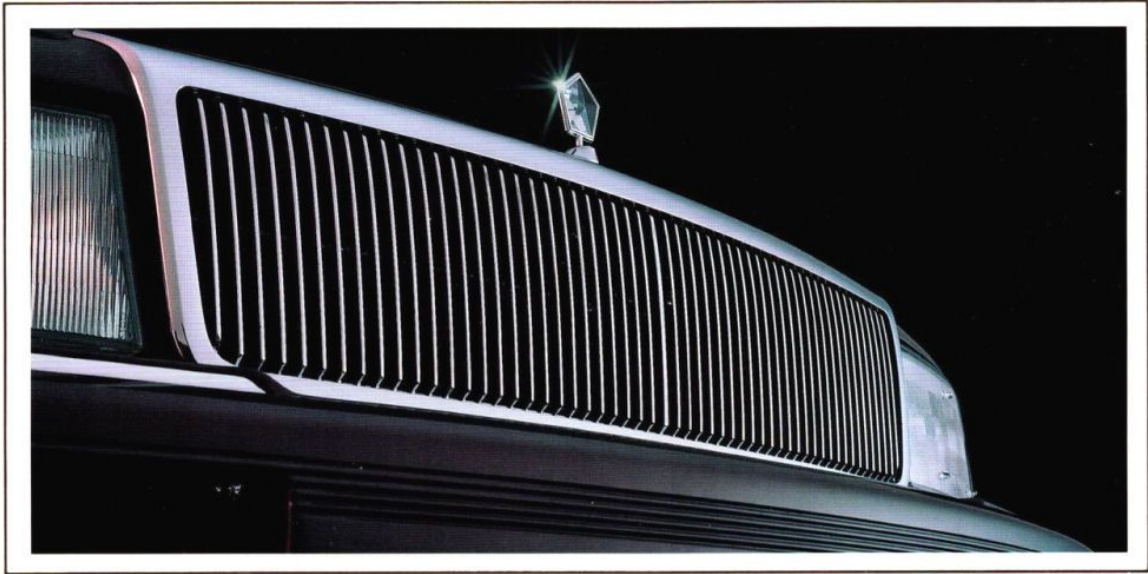
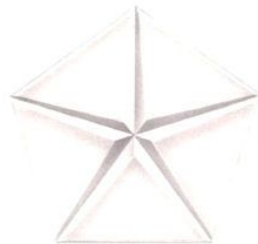


1990 CHRYSLER



LeBaron Sedan



1990 Chrysler LeBaron Sedan

There is no luxury
without engineering.

Chrysler began earning a reputation for engineering leadership more than 60 years ago. Every day, that reputation rides on every car we build.

We're proud of our new lineup of 1990 Chryslers. Not just because they're engineered as well as cars can be.

Not just because they bear the prestigious Chrysler name or because they meet our high standard of luxury.

We're proud because we believe Chrysler builds the kind of car *you* can be proud to own. Not just a car you can count on, but a car that'll make you *feel* good...when you drive it, or when it's parked where the neighbors can see. And most important, a car you can feel safe inside of.

You can take my word for this: Chrysler will continue to build the kinds of cars that have built our reputation for engineering leadership.

Lee A. Iacocca

About this catalog. We have tried to make this catalog as complete as possible. However, since the time of printing, some of the information you'll find here may have been updated. Your dealer has details, and you should ask him for current information before ordering.

2 Some of the equipment shown or described throughout this catalog is available at extra cost.



LeBaron Sedan, shown in Dusty Rose Pearl Coat.

Witness the art and science of vehicle engineering: The new-for-1990 Chrysler LeBaron Sedan. Experience its responsive 3.0-liter MPI V-6 engine* and electronically controlled four-speed Ultradrive automatic transaxle, a car so complete...from standard driver-side air bag to landau vinyl roof treatment. Distinction and sophistication are the hallmarks of the 1990 Chrysler LeBaron Sedan.

*Built by Mitsubishi Motors Corporation.

1990 Chrysler LeBaron Sedan



Available Corinthian leather-with-vinyl-trim interior, shown in Medium/Light Quartz.

The 1990 Chrysler LeBaron Sedan lets you enjoy the luxury of leather. Available leather-with-vinyl-trim seats add the limousine look to your LeBaron Sedan. For a final luxury touch and added convenience, a six-way power seat and a leather-covered steering wheel are also included. This luxurious interior is available in your choice of three colors.



LeBaron Sedan, shown in Bright White Clear Coat.

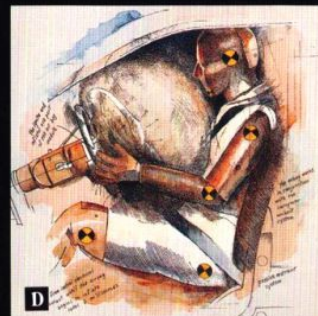
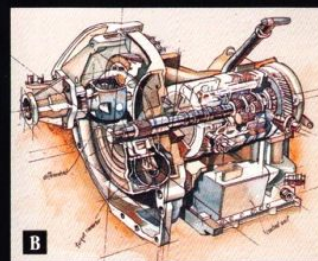
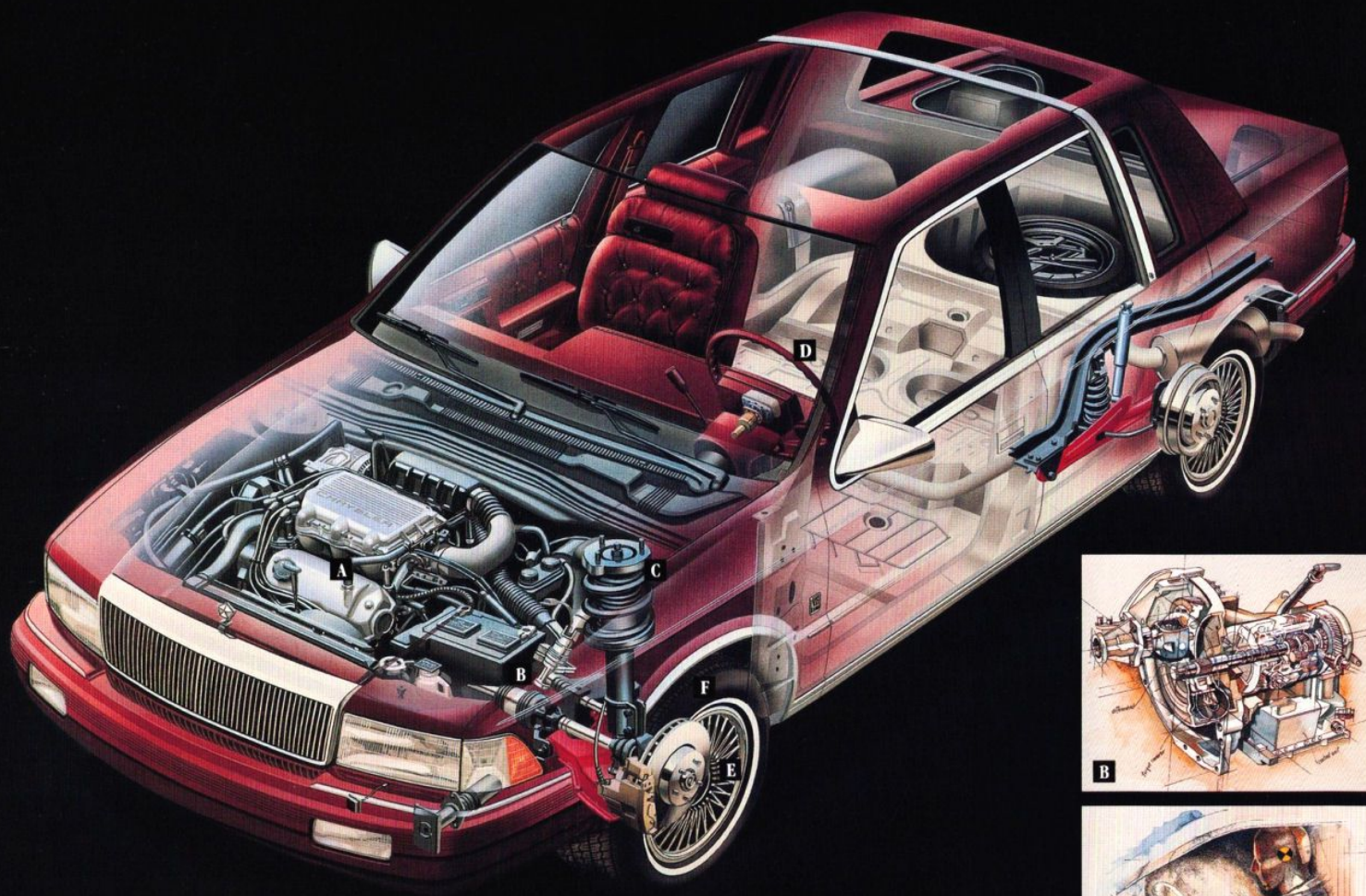


Standard premium cloth interior, shown in Bordeaux.

With interior styling that embodies the best of contemporary comfort and luxury, the 1990 LeBaron Sedan is a prestigious yet affordable four-door midsize sedan without peer. Standard are an electronic instrument cluster, air conditioning, premium stereo with cassette player, electronic speed control, tilt steering column, and much more. Inside and out, the 1990 LeBaron Sedan is a fresh, new look.

Chrysler Technology

There is no luxury without engineering.

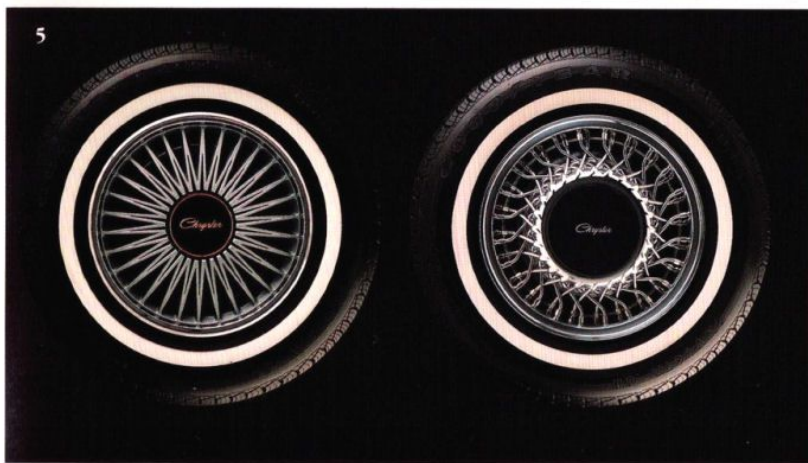
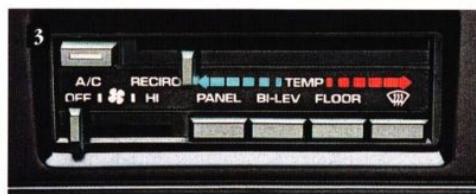


- A** 3.0-liter V-6 engine,* with overhead camshaft and multipoint fuel-injection, develops 141 horsepower to provide ample passing power while retaining excellent low rpm response and idling characteristics.
- B** Standard Ultradrive automatic transaxle is an advanced fully adaptive electronically controlled four-speed that actually senses and monitors road conditions to provide fast, smooth shifting responses.
- C** Standard suspension system includes gas-charged position-sensitive front struts, with front increased rebound damping and coil spring isolator cushions.

- D** Driver-side air bag is mounted in the steering wheel. *The Allstate Safety Leadership Award* was presented to Chrysler Corporation in recognition of its industry leadership position in the application of driver-side air bags.
- E** Proven front-wheel-drive technology provides increased stability and traction on wet and slippery surfaces.
- F** Standard power-assisted front discs are vented for rapid heat dissipation. Rear drums are self-adjusting and vacuum-assisted for maximum efficiency.

*Built by Mitsubishi Motors Corporation.

Standard Features & Options



- 1 Instrument panel.** Electronic instrument cluster with vacuum fluorescent digital displays for speedometer, odometer, trip odometer, and engine systems indicators with gauge alerts. Standard.
- 2 Power locks and windows.** Easy-reach, door-mounted controls for power windows and electric door locks aid convenience and safety. Optional.
- 3 Air conditioning.** Manual temperature control with integral bi-level ventilation for quick, even cooling. Standard.

EXTERIOR COLORS



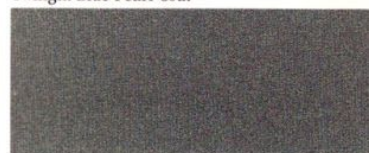
Black Cherry Pearl Coat



Twilight Blue Pearl Coat*



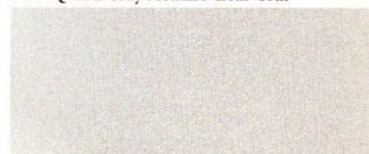
Dusty Rose Pearl Coat*



Dark Quartz Gray Metallic Clear Coat



Black Clear Coat



Platinum Silver Metallic Clear Coat*



Bright White Clear Coat



Light Taupe Metallic Clear Coat

*Extra cost. NOTE: Clear Coat finish is standard on every 1990 passenger car built by Chrysler Motors.

INTERIOR TRIM

Premium cloth 50/50 individually adjustable front seats with center armrests, driver-side adjustable lumbar support, and two-way adjustable head restraints are standard. A rear map pocket is located on each seatback.



Interior colors: Bordeaux, Medium Quartz, Taupe, Twilight Blue.

Leather: Bordeaux, Medium/Light Quartz, Twilight Blue.

Corinthian leather-with-vinyl-trim 50/50 individually adjustable front seats with center armrests, driver-side adjustable lumbar support, and two-way adjustable head restraints are optional. A rear map pocket is located on each seatback.



- 4 Infinity II.** AM stereo*/FM stereo radio, electronically tuned, with Dynamic Noise Reduction,† auto reverse, tape program music search, integral cassette tape player with five-band graphic equalizer, and four strategically placed coaxial speakers. Optional.
- 5 Wheel covers.** A set of four 14-inch premium wheel covers is standard. Cross-spoke wire wheel covers (set of four) are optional.

*Some AM stereo broadcasting may not be compatible with this radio.

†Dynamic Noise Reduction is a trademark of National Semiconductor Corporation.

Standard Safety Features

- Air bag (driver's side only)
- Antitheft ignition and steering column lock
- Antitheft trunk lock
- Backup lights
- Brake fluid pressure loss warning light (also serves as indicator when parking brake is applied)
- Center high-mounted supplemental stoplight
- Childproof inside rear door locks
- Combination lap-shoulder belts for driver and right front passenger and rear outboard passengers; lap belts for center locations
- Double ball-joint rearview mirror mount
- Dual braking system with separate brake fluid reservoirs in the master cylinder
- Dual throttle return springs
- Electric windshield washers and wipers
- Energy-absorbing front seatbacks
- Energy-absorbing instrument panel
- Energy-absorbing steering wheel
- Fade-resistant vented front disc brakes
- Fasten seat belt reminder
- Front seat head restraints
- Glare reduction measures for instrument panel, steering wheel, and windshield wipers
- Hazard warning flasher system
- Headlight and wiper circuit breakers with automatic reset
- Impact-actuated fuel supply shutdown relay
- Inside and outside rearview mirrors
- Inside hood release
- Interlocking door latches
- Key left in ignition warning
- Non-override door locks (except driver's door)
- Recessed inside door release handles
- Reinforced windshield header and roof
- Resilient window crank knobs, if applicable
- Safety-Rim wheels
- Shatter-resistant glass
- Side door beams
- Side marker lights and reflectors
- Turn signals with lane-change feature



7/70 POWER TRAIN LIMITED WARRANTY

Upon expiration of the 12-month or 12,000-mile Basic Limited Warranty, coverage is extended on power train components to seven years or 70,000 miles. A deductible applies. See your dealer for a copy of the warranty.

7/100 ANTICORROSION LIMITED WARRANTY

Your dealer will repair or replace at no charge outer body sheet metal panels found to have developed perforation (rust-through) in normal use up to seven years or 100,000 miles. See your dealer for a copy of the warranty.

STAINLESS PENTASTEEL EXHAUST SYSTEM

On every Chrysler Motors passenger car, all components of the exhaust system employ a corrosion-resistant steel alloy that has superior resistance to rust and to fatigue caused by high heat. This system provides longer life than conventional exhaust systems. Chrysler Motors provides the Stainless Pentasteel exhaust system on *all* its 1990 passenger cars, both domestic and import.

CONSIDER LEASING

More consumers are considering leasing as an alternative to buying. Leasing a new Chrysler LeBaron Sedan usually involves a small security deposit and a first month's

lease payment. Monthly payments frequently are less than financing a new car purchase. Ask your dealer for details.

CHRYSLER PURCHASE ASSISTANCE PROGRAM FOR THE PHYSICALLY CHALLENGED

Cash reimbursements of up to \$500 are available for qualified adaptive driving devices on 1990 Chrysler Motors cars and trucks. For further information, contact your dealer or the PHYSICALLY CHALLENGED RESOURCE CENTER at 1-800-255-9877.



MAKING THE BEST EVEN MORE AFFORDABLE.

Chrysler Credit offers a variety of finance programs that will help make your new Chrysler LeBaron Sedan even more affordable. These special finance and leasing programs are designed to meet the needs of today's automotive buyer. They include Gold Key Lease, America's Choice Payment Plan, College Graduate Plans, Retail Financing, and more. Ask your salesperson for details.

OPTIONAL SERVICE CONTRACT COVERAGE

Chrysler Service Contracts provide you with additional peace of mind protection for your new vehicle. Chrysler Motors offers a variety of plans to meet your needs. Plan coverage begins after your vehicle's basic warranty expires. A deductible applies. Allowances for car rental and towing are also included. See your dealer for details.



MOPAR parts are engineered by Chrysler Motors for use in your new Chrysler LeBaron Sedan. When replacement is necessary, be sure to specify MOPAR parts. Used by professional mechanics worldwide.

For complete details on standard equipment, specifications and technical information, ask your dealer for a copy of the 1990 Chrysler Technical Specifications Guide.

All product illustrations and specifications are based upon current information at the time of publication approval. Although descriptions are believed correct, complete accuracy cannot be guaranteed. Chrysler Motors reserves the right to make changes from time to time, without notice or obligation, in prices, specifications, colors and materials, and to change or discontinue models. See your dealer for the latest information.

Chrysler and MOPAR are registered trademarks, and LeBaron Sedan is a trademark of Chrysler Motors Corporation.



Buckle up for safety.

THERE IS NO LUXURY WITHOUT ENGINEERING.