

1 9 9 0

PLYMOUTH SUNDANCE



1 9 9 0

PLYMOUTH SUNDANCE

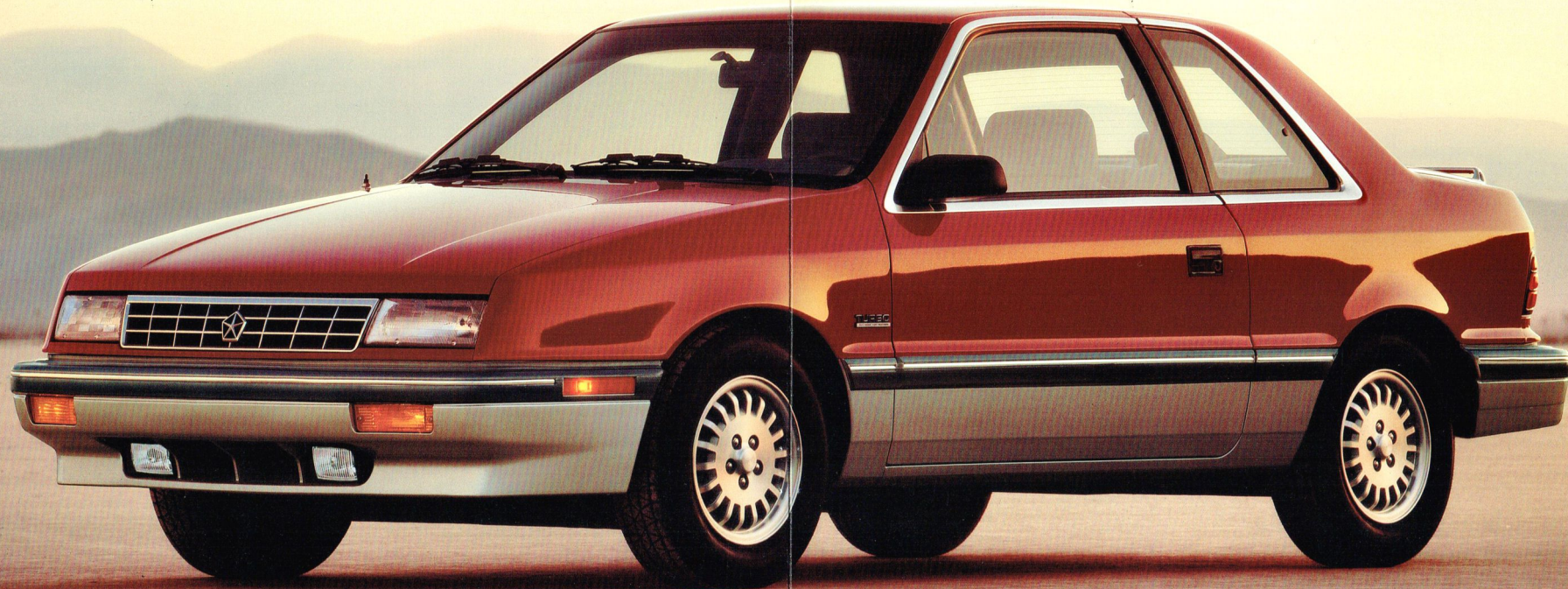


Sundance RS (Rallye Sport) two-door with optional Turbo Engine Package, shown in Bright White Clear Coat/Medium Tundra Metallic Clear Coat.



Sundance RS (Rallye Sport) two-door with optional Turbo Engine Package, shown in Bright White Clear Coat/Medium Tundra Metallic Clear Coat.

1990 PLYMOUTH SUNDANCE



About this catalog: We have tried to make this catalog as complete as possible. However, since the time of printing, some of the information you'll find here may have been updated. Your dealer has details, and you should ask him for current information before ordering.

Some of the equipment shown or described throughout this catalog is optional or available at extra cost.

Sundance RS two-door with optional Turbo Engine Package, shown here and on cover in Exotic Red Clear Coat/Platinum Silver Metallic Clear Coat.

Plymouth Sundance...
excitement on the cutting edge

If it's fun you're seeking, the sporty
1990 Plymouth Sundance will take
you to new heights. Experience its

Sporty

precision
handling,
exceptional
comfort, and
quick performance
with your choice of a

standard 2.2-liter EFI (electronically fuel-injected) engine, an
available 2.5-liter EFI dual balance-shaft engine or a 2.5-liter
SMPI (sequential multipoint fuel injection) Turbo engine.

When you combine fun-to-drive excitement and 47 standard



features with our 7/70 limited
warranty protection, Sundance
becomes an even more
brilliant performer. No doubt
about it. Plymouth Sundance.
We call it a car of "world-
class" refinements. You'll call it
simply amazing.



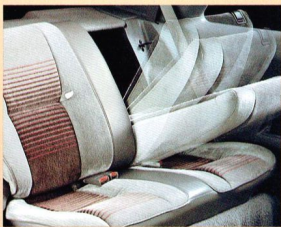


Sundance RS interior, shown in Medium Quartz, includes new standard leather-wrapped luxury steering wheel with air bag restraint system, and adjustable driver's seat lumbar support.

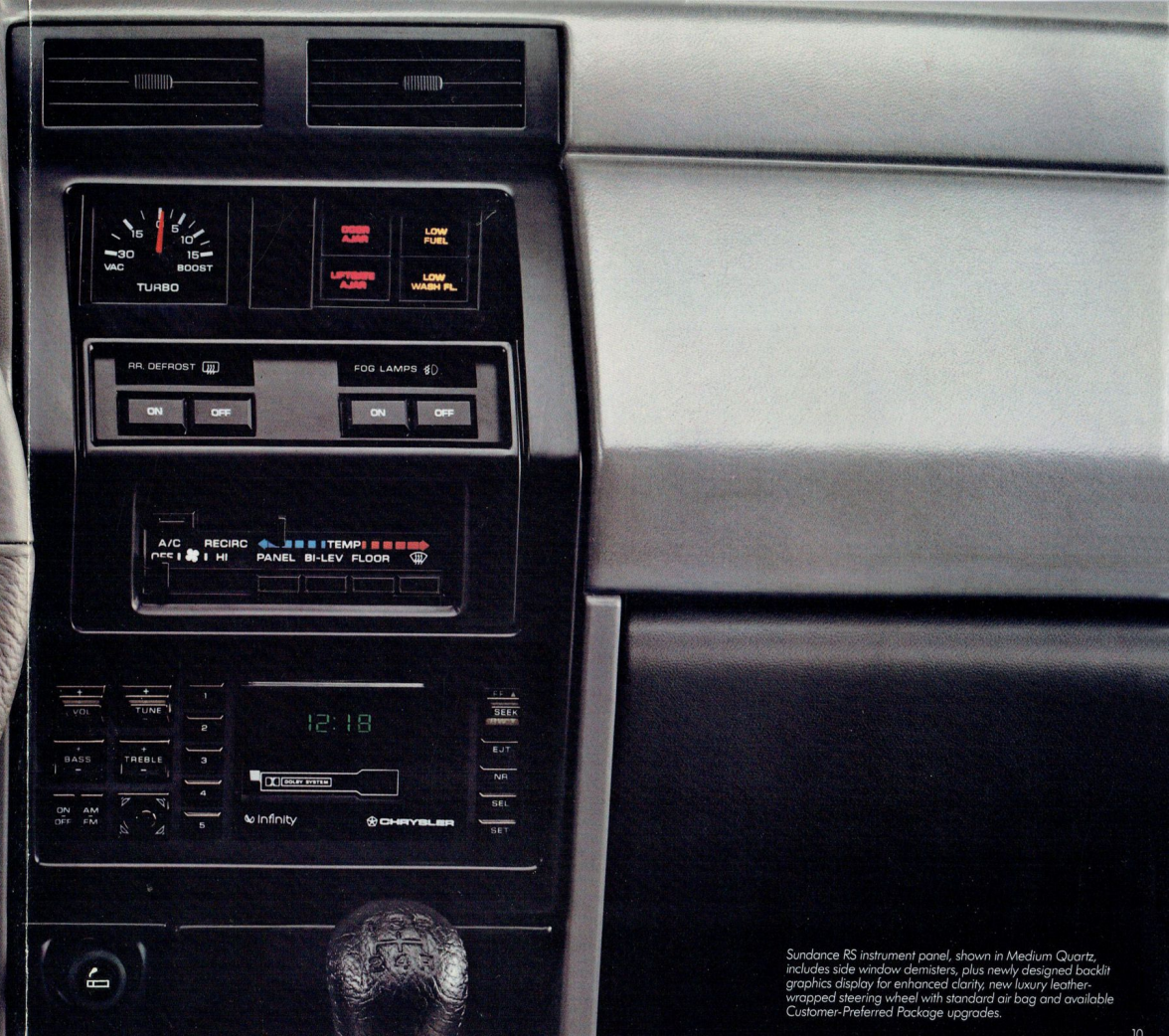
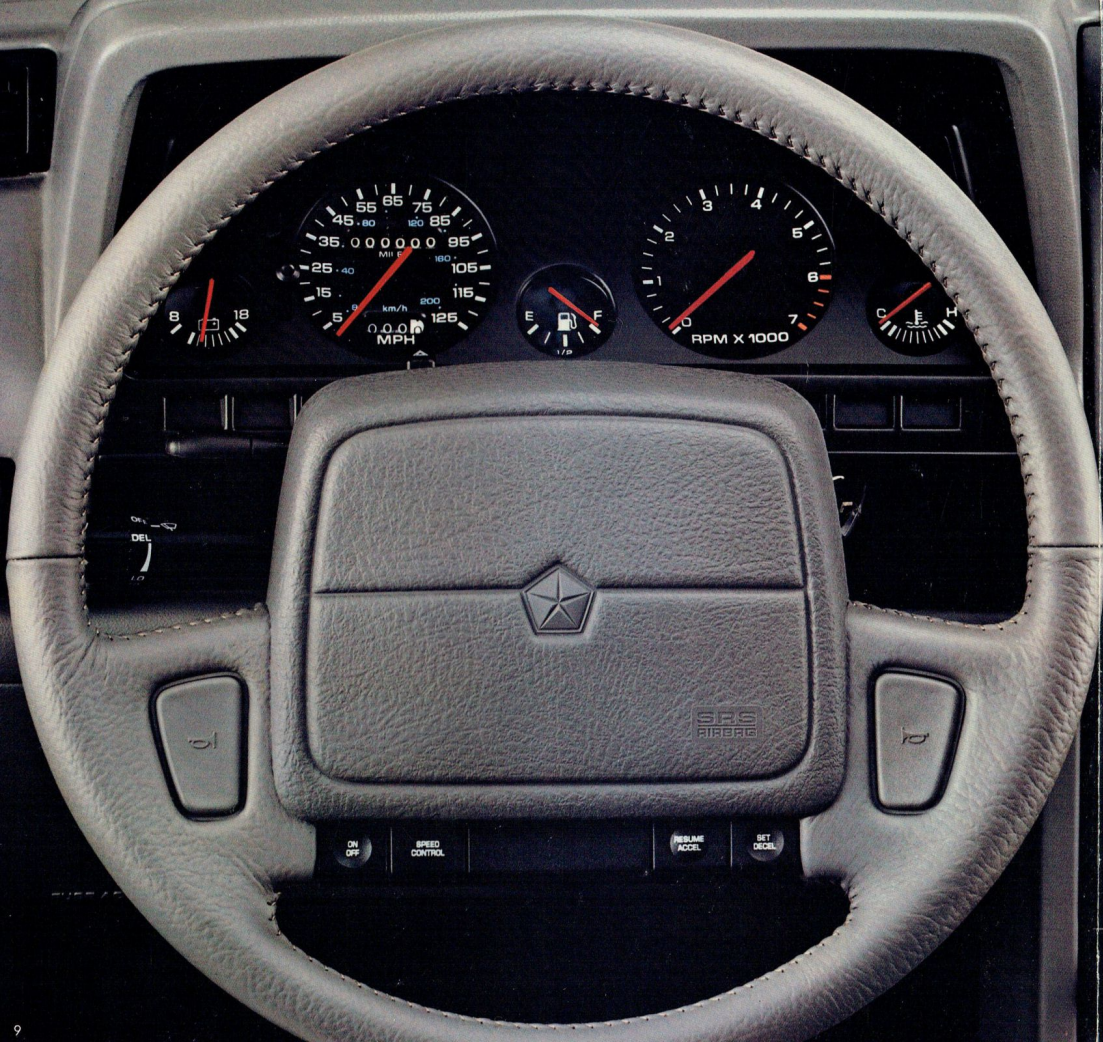
Plymouth Sundance RS...personalized exhilaration

Express yourself with Sundance RS. Standard equipment includes sporty two-tone paint, five-passenger seating, performance bucket seats, 60/40 split fold-down rear seatbacks (shown left), child-proof rear door locks,* and outboard rear passenger shoulder/lap belts. There's also a standard luggage rack, fog lights, cast aluminum wheels, and an available 2.5-liter SMPI Turbo engine†

*Available on four-door models only.
†See page 18 for further engine details.



Sundance RS four-door with optional Turbo Engine Package, shown in Aquamarine Blue Metallic Clear Coat/Platinum Silver Metallic Clear Coat.

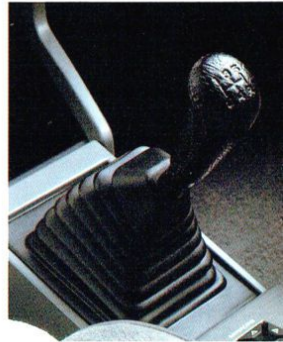


Sundance RS instrument panel, shown in Medium Quartz, includes side window demisters, plus newly designed backlit graphics display for enhanced clarity, new luxury leather-wrapped steering wheel with standard air bag and available Customer-Preferred Package upgrades.

Plymouth Sundance... the inside advantage

Every time you get behind the wheel, you'll appreciate

Sundance's sporty driver-oriented environment.

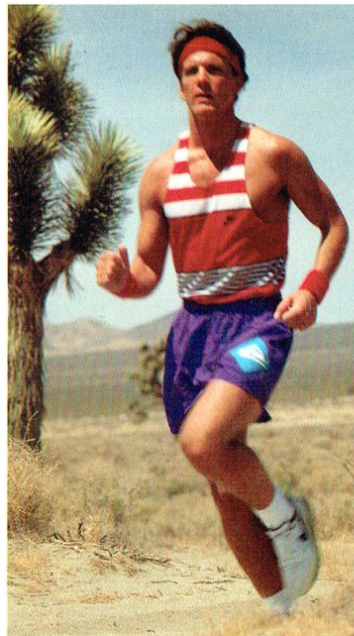


Sharp

Every detail, from the cockpit-style dash design with luxury steering wheel and standard driver-side air bag to the available steering wheel-mounted speed control, was created for your convenience and safety. Standard console-mounted **five-speed manual transaxle** with new three-plane shifter offers an effortless shifting pattern. **Individual slide-out cup holders**, in the available full-length console, hold your favorite beverages. Whether you choose the two- or four-door model, Sundance's "**hidden**" hatchback



design is not only sporty looking, but also adds versatility. It gives you access to over 33 cubic feet with the split rear seatback folded down.





AM stereo/FM stereo electronically tuned radio includes an integral digital clock, standard. (See page 17 for sound system details.)



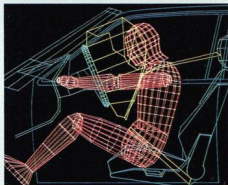
Electric rear window defroster* improves your rearward visibility, standard on RS models, optional on base models.



New aero design wiper blades help eliminate skipping and streaking for a clear view, standard.



New style 14-inch cast aluminum wheels enhance Sundance's good looks, standard on RS models, optional on base models.



The Allstate Safety Leadership Award was presented to Chrysler Corporation in recognition of its industry leadership position in the application of driver-side air bags.



Turbo Engine Package gives you extra power for passing and performance, optional.



Dual power outside mirrors allow adjustments with an easy control touch, optional.



Illuminated dual visor vanity mirrors make grooming easy for driver and passenger, optional.



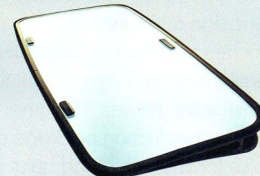
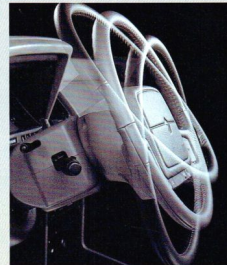
Deluxe AM stereo/FM stereo radio with cassette player, optional. (See page 17 for sound system details.)



Chrysler Infinity I Sound System, optional.



Air conditioning† helps keep you cool and dry with bi-level ventilation and high-capacity fan. (Tinted glass required), optional.



Flip-up/removable sunroof with new reflective finish helps reduce interior heat. Includes cargo area tie-down straps and a vinyl protective storage bag, optional.

Tilt steering column allows just the right driving position for maximum comfort, standard on RS models, optional on base models.

*Some AM stereo broadcasting may not be compatible with this radio.

†Required on all passenger vehicles registered in New York state.

‡There are special engine cooling requirements for field-installed air conditioning. Failure to follow these requirements may invalidate warranty. See dealer for details.

FEATURES, OPTIONS & ACCESSORIES

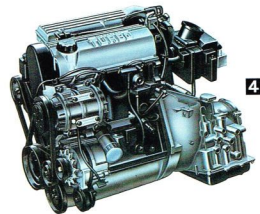


Sundance two-door with optional dealer-installed Mopar® fog lights and roof rack, shown in Black Cherry Pearl Coat.



Sundance four-door shown in Dusty Rose Pearl Coat.

At Plymouth, engineering improvements never stop. From durable touches such as a **"Stainless Pentasteel" exhaust system 1** for corrosion resistance and long life to personal comfort touches like **body air exhausters 2** for improved interior ventilation, you'll appreciate the difference Plymouth engineering makes. Underneath, a new standard noise and vibration reduction package significantly hushes outside road noise for a smooth and quiet ride. Sundance offers a standard responsive 2.2-liter EFI engine, an available 2.5-liter EFI dual balance-shaft engine **3** or a powerful 2.5-liter SMPI Turbo



CORROSION PROTECTION

Two Clear Coats applied wet-on-wet give Sundance its high-gloss shine.

Two base coats provide deep, vivid color.

Electrocoat epoxy primer is applied by full immersion after a seven-step treatment cleans and prepares the surface.

Zinc phosphate coating is applied before the metal is formed into vehicle parts.

Galvanized steel is used extensively throughout Sundance.

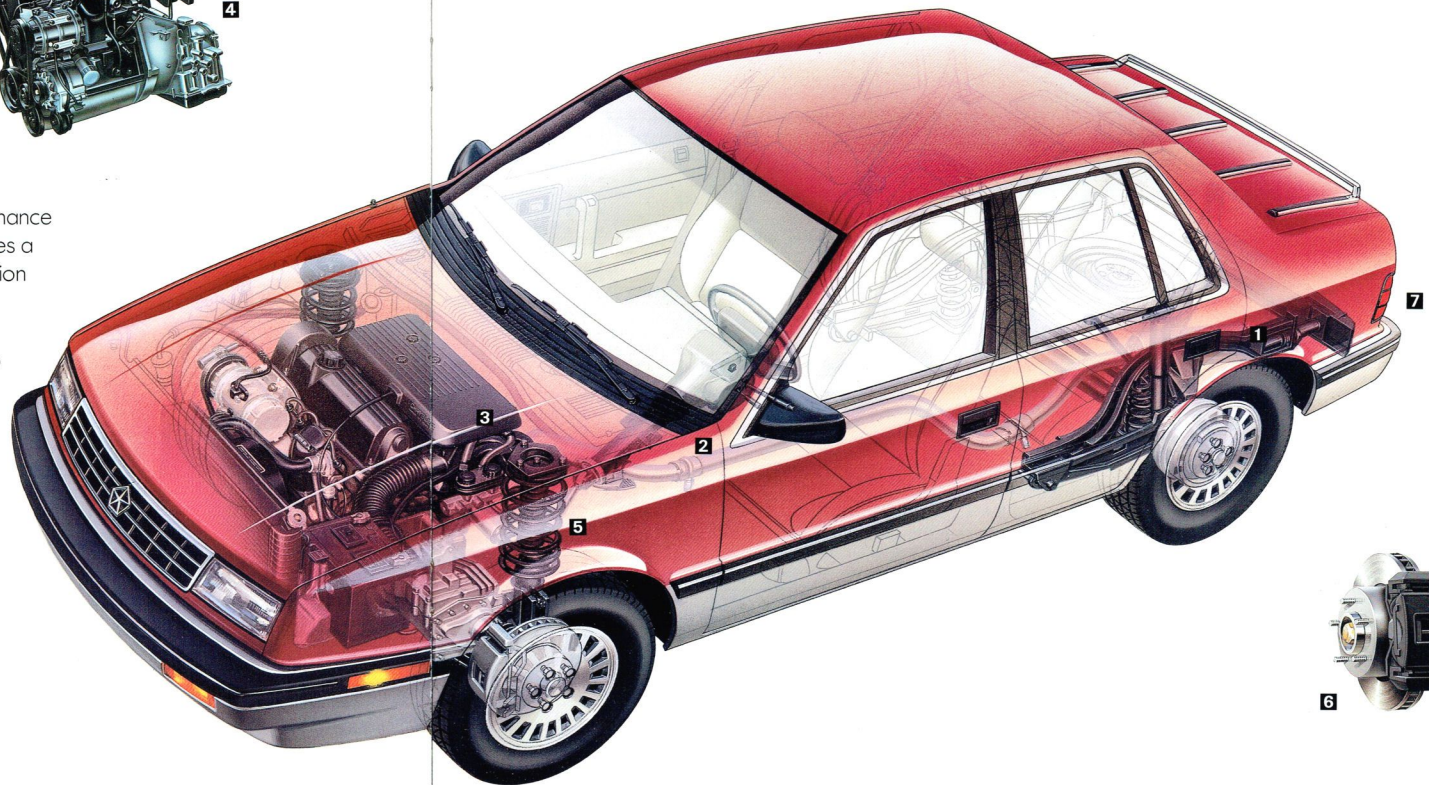
Lower bodyside antichip coating protects against stone damage.

engine **4** that delivers a real performance feel because it provides a higher peak acceleration level. Plymouth's **comprehensive anticorrosion measures** ensure that your Sundance will look great for years to come. (See illustration

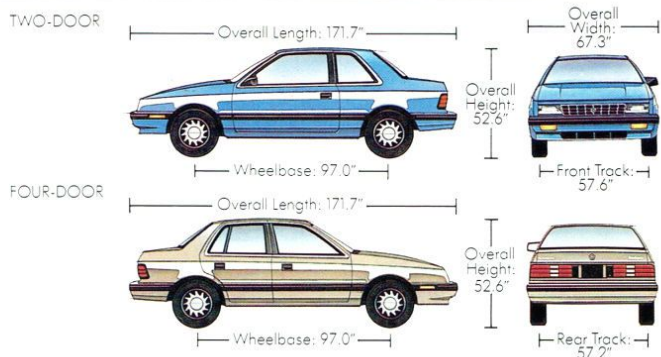
above.) And every Sundance is backed by a seven-year or 100,000-mile Anticorrosion Limited Warranty. Road shocks and vibration are isolated with an **improved standard precision handling suspension system 5**. It includes front and rear antisway bars, gas-charged position-sensitive dual path front struts and rear

shock absorbers with larger in-line bushings on the lower control arm. Available **four-wheel disc brakes 6** provide high performance, sure-footed stopping. A

new energy-absorbing "Double Protection" bumper system 7 exceeds federally mandated impact standards.



SUNDANCE DIMENSIONS



SPECIFICATIONS

Turning Diameter (curb-to-curb)	33.9'	
Curb Weight (estimated)		
Two-door	2,602 lb	
Four-door	2,642 lb	
Cargo Capacity		
With rear seatbacks up	13.1 cu ft (four-door)	13.2 cu ft (two-door)
With rear seatbacks down	33.0 cu ft (four-door)	33.3 cu ft (two-door)
Passenger Capacity	5	
Fuel Capacity	14 gal	
Trailer Towing Capacity		
2.2-L engine	1,000 lb with manual transaxle 1,500 lb with automatic transaxle	
2.5-L engine	1,000 lb with manual transaxle 2,000 lb with automatic transaxle	

OPTIONS PACKAGES

RS (Rallye Sport) Package

■ 2.5-liter EFI balance-shaft engine ■ Electric rear window defroster¹ ■ Front fascia with integral air dam, and fog lights² ■ Full-length center console with center armrest² ■ Heel/toe type accelerator pedal (manual transaxle only)² ■ Leather-wrapped luxury steering wheel with air bag ■ Light Group ■ Remote liftgate release² ■ Luggage rack² ■ Message center with reminder lights for door ajar, liftback ajar, low fuel, low windshield washer fluid² ■ Deluxe AM stereo³/FM stereo electronically tuned radio with cassette and four-speaker sound system (see Standard and Optional Equipment list for content) ■ Premium cloth-covered door trim panels² ■ RS performance seats with driver-side lumbar adjuster² ■ "Sundance RS" nameplate² ■ Two-tone paint² ■ Dual outside remote mirrors

Turbo Engine Package (Requires Popular Equipment or RS Package)

■ 2.5-liter Turbo SMPI dual balance-shaft engine^{2,4} ■ Engine dress-up² ■ Equal-length driveshafts² ■ Heel/toe type accelerator pedal (manual transaxle only)² ■ Message center (see Rallye Sport Package for content)² ■ Performance-handling P185/70R14 steel-belted radial tires with all-season tread and low black letters (set of four)² ■ Performance tuned stainless Pentastee exhaust system with dual bright exhaust tip² ■ Turbo identification² ■ Turbo vacuum/boost gauge²

Light Group

■ Dual illuminated visor vanity mirror² ■ Ignition switch light with time delay² ■ Glove box light² ■ Ash receiver light² ■ Underhood light² ■ Cargo compartment light² ■ Rear dome light switch (available on four-door models only)²

¹Required on all passenger vehicles registered in New York state. ²Available in package only.

³Some AM stereo broadcasting may not be compatible with this radio.

⁴Premium unleaded fuel recommended. Turbocharged engine not recommended for trailer towing, and such use may damage engine and invalidate warranty. See your dealer for details.

Certain models, packages, and options are subject to specific restrictions, requirements, or late availability. See your dealer for the latest ordering information.

CUSTOMER-PREFERRED PACKAGES AND AVAILABLE OPTIONS

POWER TRAIN AVAILABILITY:

ENGINES	TRANSMISSIONS	SUNDANCE PACKAGE CODES								SUNDANCE RS PACKAGE CODES	
		2RT	2ST	2SU							
2.2-Liter EFI	5-Speed Manual										
	3-Speed Automatic ¹										
2.5-Liter EFI	5-Speed Manual	2RA			2RC	2RD	2RE	2RF	2RG	2RH	2RJ
	3-Speed Automatic ¹	2SA	2SB	2SC	2SD	2SE	2SF	2SG	2SH	2SJ	
2.5-Liter SMPI Turbo	5-Speed Manual						2RK	2RL		2RN	2RP
	3-Speed Automatic ¹						2SK	2SL		2SN	2SP

PACKAGE CONTENTS

Air Conditioning and Tinted Glass		•		•	•	•	•			•	•
Bodyside Accent Stripe: Painted, two-tone			•	•	•	•	•				
Console: Full-length			•	•	•	•	•	•	•	•	•
Defroster, Rear Window: Electric		•	•	•	•	•	•	•	•	•	•
Door Locks — Power						•	•			•	•
Floor Mats						•	•			•	•
Four-Speaker Sound System			•	•	•	•	•	•	•	•	•
Liftgate Release — Remote			•	•	•	•	•	•	•	•	•
Light Package			•	•	•	•	•	•	•	•	•
Mirrors — Exterior: Dual outside power remote						•	•			•	•
Mirrors — Exterior: Dual outside remote			•	•					•		
Radio — AM stereo ² /FM stereo with cassette player, four speakers						•			•		
Radio — Chrysler Infinity I Sound System AM stereo ² /FM stereo with cassette player including tape program music search, seek-and-scan, eight speakers in four locations								•		•	•
Seat — Driver: Power							•				•
Speed Control — Electronic							•	•		•	•
Steering Column — Tilt		•	•	•	•	•	•	•	•	•	•
Windows — Power							•				•
14-inch cast aluminum wheels and performance tires, fog lamps, luggage rack, two-tone paint, performance bucket seats, color-keyed moldings, leather steering wheel, message center										•	•

AVAILABLE UPGRADE OPTIONS

Air Conditioning and Tinted Glass	•								•		
Brakes — Four-wheel disc			•	•	•	•	•	•	•	•	•
Conventional Spare			•	•	•	•	•	•	•	•	•
Defroster, Rear Window: Electric	•										
Door Locks — Power			•	•							
Radio — AM stereo ² /FM stereo with cassette player, four speakers			•	•							
Radio — Chrysler Infinity I Sound System AM stereo ² /FM stereo with cassette player including tape program music search, seek-and-scan, eight speakers in four locations							•				
Speed Control — Electronic		•	•	•					•		
Steering Column — Tilt	•										
Sunroof — Manually operated							•	•	•	•	•
Wheels — Cast aluminum, 14-inch (set of four)							•	•			
Windows — Power			• ³	• ³	•					•	

¹Includes lock up torque converter.

²Some AM stereo broadcasting may not be compatible with this radio.

³Includes power door locks and power mirrors — priced separately.

SUNDANCE STANDARD AND OPTIONAL EQUIPMENT

SUNDANCE
SUNDANCE RS

✓ FUNCTIONAL

Alternator—90-ampere	S	S
Battery—500-ampere; maintenance-free	S	S
Brakes—Four-wheel disc: vented front and solid rear	O	O
Brakes—Vented front disc and rear drum: power-assisted	S	S
Electronic Ignition, Fuel Injection, and Voltage Regulator	S	S
Engine—2.2-liter EFI four-cylinder	S	NA
Engine—2.5-liter EFI four-cylinder: dual balance-shaft	O	S
Engine—2.5-liter SMPI four-cylinder Turbo: dual balance-shaft (Turbo Engine Package required) ¹	P	P
Exhaust System—Stainless Pentasteel	S	S
Fuel Tank—14-gallon	S	S
Headlights—Halogen: aerostyle with stone-resistant plastic lenses	S	S
Steering—14:1 ratio, rack-and-pinion: power-assisted	S	S
Suspension—Precision-handling: gas-charged front position-sensitive struts and rear shock absorbers; front and rear antisway bars	S	S
Tire—Spare: compact	S	S
Tires—P185/70R14 steel-belted radial, black sidewall (set of four)	S	NA
Tires—P185/70R14 steel-belted radial all-season performance black sidewall (set of four)	NA	S
Transaxle—Automatic: three-speed with lockup torque converter	O	O
Transaxle—Manual: five-speed overdrive	S	S

✓ EXTERIOR

Bracket—Front license plate (standard in states where required)	NC	NC
Bumpers—5 mph; body color: with black rub strips and bright accent stripe	S	S
Corrosion Protection—Urethane protective coating on lower body panels; extensive use of galvanized steel	S	S
Fog Lamps	NA	S
Fuel Filler Cap—Tethered	S	S
Glass—Tinted: liftback only (four-door)	S	S
Glass—Tinted: liftback and rear quarter windows (two-door)	S	S
Glass—Tinted: all windows	O	O
Grille—Bright: with bright Pentastar	S	S
Hood—Counterbalanced	S	S
Luggage Rack—Liftgate-mounted	NA	S
Mirror—Exterior: left, remote	S	NA
Mirrors—Exterior: dual outside power remote	O	O
Mirrors—Exterior: dual outside remote	O	S
Molding—Bodyside: wide Black with bright accent	S	S
Moldings—Belt and upper door: wide bright; windshield and liftback: black upper and lower	S	S
Paint—Two-tone	NA	S
Stripe—Bodyside: painted accent	P	NA
Sunroof—Flip-up/removable	O	O
Wheel Covers—Luxury: 14-inch (set of four)	S	NA
Wheels—Cast aluminum, 14-inch (set of four)	O	S

✓ INTERIOR

Air Bag—Steering wheel-mounted	S	S
Air Conditioning ² —Includes tinted glass priced separately	O	O
Ash Receiver—Front	S	S
Brake—Parking: foot-pedal-operated	S	S

SUNDANCE
SUNDANCE RS

✓ INTERIOR (cont.)

Carpeting—Cargo compartment dress-up: Charcoal	S	S
Carpeting—Passenger compartment: color-keyed	S	S
Chimes—Reminders: fasten seat belt; headlights on; key-in-ignition	S	S
Cigar Lighter—With illuminated socket	S	S
Clock—Electronic digital: integral with all radios	S	S
Coat Hooks—Rear compartment: two	S	S
Console—Mini	S	NA
Console—Full	P	S
Defroster ³ —Rear window: electric	O	S
Demisters—Side window	S	S
Door Locks—Childproof (on four-door rear doors only)	S	S
Door Locks—Power	O	P
Glove Box—Latching	S	S
Headliner—Cloth-covered	S	S
Heater and Defroster—With bi-level ventilation	S	S
Hood Release—Inside	S	S
Horn—Single-note	S	S
Instrument Cluster—Electromechanical: speedometer, tachometer, odometer, trip odometer, gauges for electrical system voltage, engine coolant temperature, and fuel level; warning light for low engine oil pressure	S	S
Light Group Package—Includes ash receiver light, cargo compartment light, glove box light, ignition switch light with time-delay, rear door dome light switch (four-door only), underhood light, dual illuminated visor vanity mirrors	P	S
Mirror—Interior: rearview day/night	S	S
Mirrors—Interior: driver and passenger visor vanity, non-illuminated	S	NA
Mirrors—Interior: driver and passenger visor vanity, illuminated	P	S
Multifunction Control Lever—Mounted on steering column: includes controls for turn signals with lane-change feature, day/night flash/pass feature, headlight dimmer, intermittent windshield wiper/washer	S	S
Radio—AM stereo ⁴ /FM stereo radio with integral digital clock and two speakers	S	NA
Radio—AM stereo ⁴ /FM stereo with cassette player, integral digital clock and four speakers	O	S
Radio—Chrysler Infinity I Sound System, AM stereo ⁴ /FM stereo with cassette player including tape program music search, seek-and-scan, integral digital clock and eight speakers in four locations	O	O
Seat—Driver: power, six-way	O	O
Seatback—Rear, 60/40 split folding w/3-point color-keyed outboard seat belts	S	S
Seats—Front, performance reclining thin-back bucket with driver's side lumbar adjuster, cloth with vinyl trim	NA	S
Seats—Front, premium reclining thin-back bucket with color-keyed 3-point seat belts, cloth with vinyl trim	S	NA
Shelf Panel—Removable, carpeted	S	S
Speed Control, Electronic—Steering wheel-mounted	O	O
Steering Wheel—Luxury, with air bag	S	NA
Steering Wheel—Luxury leather-wrapped, with air bag	NA	S
Tether Anchor—Child restraint	S	S
Windows—Power	O	O
Windshield Wipers—Aero design: intermittent wipe feature	S	S

S—Standard. O—Optionally available. NC—No-charge option. P—Package only. NA—Not available.

¹Premium unleaded fuel recommended. Turbocharged engine not recommended for trailer towing, and such use may damage engine and invalidate warranty. See your dealer for details.

²There are special engine cooling requirements for field-installed air conditioning. Failure to follow these requirements may invalidate warranty. See your dealer for details.

³Required on all passenger vehicles registered in New York state.

⁴Some AM stereo broadcasting may not be compatible with this radio.

STANDARD SAFETY FEATURES

<ul style="list-style-type: none"> ■ Antitheft trunk lock ■ Backup lights ■ Brake fluid pressure loss warning light (also serves as indicator when parking brake is applied) ■ Childproof rear door locks (four-door only) ■ Double ball-joint rearview mirror mount ■ Dual braking system with separate brake fluid reservoirs in the master cylinder ■ Electric windshield washers ■ Energy-absorbing front seatbacks ■ Energy-absorbing instrument panel and sun visors 	<ul style="list-style-type: none"> ■ Energy-absorbing steering column ■ Fade-resistant vented front disc brakes ■ Front seat head restraints ■ Glare reduction measures for instrument panel, steering wheel, and windshield wipers ■ Hazard warning flasher system ■ Ignition and steering column lock ■ Impact-actuated fuel supply shutdown relay ■ Inside rearview mirror ■ Interlocking door latches ■ Key-left-in-ignition reminder 	<ul style="list-style-type: none"> ■ Non-override door locks (except driver's door) ■ Recessed inside door release handles ■ Reinforced windshield header and roof ■ Resilient window crank knobs ■ Safety-Rim wheels ■ Seat belt reminder system ■ Seatback inertia latches on folding front seats (two-door only) ■ Shatter-resistant glass ■ Side door beams ■ Side marker lights and reflectors ■ Turn signals with lane-change feature
---	---	--

POWER TRAIN CHART¹

TYPE	DISPLACEMENT	BORE & STROKE	COMPRESSION RATIO	HORSEPOWER/ TORQUE		TRANSAXLE AVAILABILITY
				SAE NET @ RPM		
4-cylinder electronic fuel injection: standard	2.2-liter (135 CID)	3.44"×3.62"	9.5:1	93 hp @ 4,800	122 lb.-ft @ 3,200	5-speed close-ratio manual overdrive (2.51 OTGR): standard 3-speed automatic (3.02 OTGR): optional
4-cylinder electronic fuel injection, dual balance-shaft: optional ²	2.5-liter (153 CID)	3.44"×4.09"	8.9:1	100 hp @ 4,800	135 lb.-ft @ 2,800	5-speed close-ratio manual overdrive (2.51 OTGR): standard 3-speed automatic (3.02 OTGR): optional
4-cylinder sequential multipoint electronic fuel injection, dual balance-shaft turbocharged ³ : optional ⁴	2.5-liter (153 CID)	3.44"×4.09"	7.8:1	150 hp @ 4,800	180 lb.-ft @ 2,000	5-speed close-ratio manual overdrive (2.51 OTGR): standard 3-speed automatic (3.02 OTGR): optional

OTGR—Overall top gear ratio.

¹Emissions controls and testing required at extra cost on all vehicles registered in California; not available otherwise. ²Includes 500-amp battery.

³Premium unleaded fuel recommended. Turbocharged engine not recommended for trailer towing, and such use may damage engine and invalidate warranty. See your dealer for details.

⁴Available in package only.



2.2-LITER EFI ENGINE

Sundance's standard 2.2-liter EFI four-cylinder engine includes electronic fuel injection for optimal fuel metering and usage. Engineering features include an overhead cam, roller tappets, and a fast-burn cylinder head that help provide smooth, consistent operation.



2.5-LITER EFI DUAL BALANCE-SHAFT ENGINE

The optional available 2.5-liter EFI dual balance-shaft engine is included in the Sundance RS Package. This engine produces increased torque for stronger performance, electronic fuel injection ensures optimum fuel use, and the dual balance shafts dampen engine vibration.



2.5-LITER TURBOCHARGED SMPI ENGINE*

The 2.5-liter Turbo SMPI engine features a single overhead camshaft design with counter-rotating dual balance shafts and low-inertia turbine and compressor for higher sustained peak acceleration, substantial low-end torque, and quiet, low-vibration idle. (Available in Turbo Engine Package.)

*Premium unleaded fuel recommended. Turbocharged engine not recommended for trailer towing, and such use may damage and invalidate warranty. See your dealer for details.

COLOR TRIM/COMBINATIONS

EXTERIOR	INTERIOR
Black Cherry Pearl Coat	Bordeaux
Platinum Silver Metallic Clear Coat*	Medium Quartz
Exotic Red Clear Coat	Bordeaux, Medium Quartz
Aquamarine Blue Metallic Clear Coat	Medium Quartz
Black Clear Coat	Champagne, Medium Quartz
Bright White Clear Coat	Bordeaux, Medium Quartz
Dusty Rose Pearl Coat*	Bordeaux
Light Champagne Metallic Clear Coat*	Champagne
Light Spectrum Blue Metallic Clear Coat	Twilight Blue
Medium Tundra Metallic Clear Coat	Champagne
TWO-TONE EXTERIOR†	INTERIOR
Aquamarine Blue Metallic Clear Coat/Platinum Silver Metallic Clear Coat	Medium Quartz
Light Champagne Metallic Clear Coat/Medium Tundra Metallic Clear Coat	Champagne
Light Spectrum Blue Metallic Clear Coat/Platinum Silver Metallic Clear Coat	Twilight Blue
Exotic Red Clear Coat/Platinum Silver Metallic Clear Coat	Medium Quartz
Bright White Clear Coat/Medium Tundra Metallic Clear Coat	Champagne

*Available at extra cost.

†Two-tone paint treatment is available with RS Package only.

TIRES

SIZE	TYPE (set of four)	AVAILABILITY
P185/70R14	Steel-belted radial, black sidewall	Standard
P185/70R14	Steel-belted radial performance tires with all-season tread and low black letters	Package (available with the Turbo Engine Package and RS Package only)

MILEAGE*

24 EPA est. city mpg, 31 EPA est. hwy. mpg

*Mileage figures based on base model standard engine with 5-speed manual overdrive transaxle.

EXTERIOR COLORS



Black Cherry Pearl Coat



Platinum Silver Metallic Clear Coat*



Exotic Red Clear Coat



Aquamarine Blue Metallic Clear Coat



Black Clear Coat

Bright White Clear Coat



Dusty Rose Pearl Coat*



Light Champagne Metallic Clear Coat*



Light Spectrum Blue Metallic Clear Coat



Medium Tundra Metallic Clear Coat

TWO-TONE EXTERIOR COLORS†



Aquamarine Blue Metallic Clear Coat/Platinum Silver Metallic Clear Coat



Light Champagne Metallic Clear Coat/Medium Tundra Metallic Clear Coat



Light Spectrum Blue Metallic Clear Coat/Platinum Silver Metallic Clear Coat



Exotic Red Clear Coat/Platinum Silver Metallic Clear Coat



Bright White Clear Coat/Medium Tundra Metallic Clear Coat

*Available at extra cost. †Two-tone paint treatment is available with RS Package only.

NOTE: Due to printing limitations, the colors shown will vary slightly from actual hues. See your Plymouth dealer for actual color chips.

Clear Coat finish is standard on every 1990 passenger car built by Chrysler Motors.

Optional Service Contract Coverage

Chrysler Service Contracts provide you with additional peace of mind protection for your new vehicle. Chrysler Motors offers a variety of plans to meet your needs. Plan coverage begins after your vehicle's basic warranty expires. A deductible applies. Allowances for car rental and towing are also included. See your dealer for details.



MOPAR® parts are engineered by Chrysler Motors for use in your new Plymouth Sundance. When replacement is necessary, be sure to specify MOPAR® parts. Used by professional automotive technicians worldwide.

Consider Leasing

More consumers are considering leasing as an alternative to buying. Leasing a new Plymouth Sundance usually involves a small security deposit and a first month's lease payment. Monthly payments are usually less than financing a new car purchase. Ask your dealer for details.



Making the best even more affordable.

Chrysler Credit offers a variety of finance programs that will help make your new Plymouth Sundance even more affordable. These special finance and leasing programs are designed to meet the needs of today's automotive buyer. They include Gold Key Lease, America's Choice Payment Plan, College Graduate Plans, Retail Financing, and more. Ask your salesperson for details.

Chrysler Purchase Assistance Program For The Physically Challenged

Cash reimbursements of up to \$500 are available for qualified adaptive driving devices on 1990 Chrysler Motors cars and trucks. For further information, contact your dealer or the PHYSICALLY CHALLENGED RESOURCE CENTER AT 1-800-255-9877.



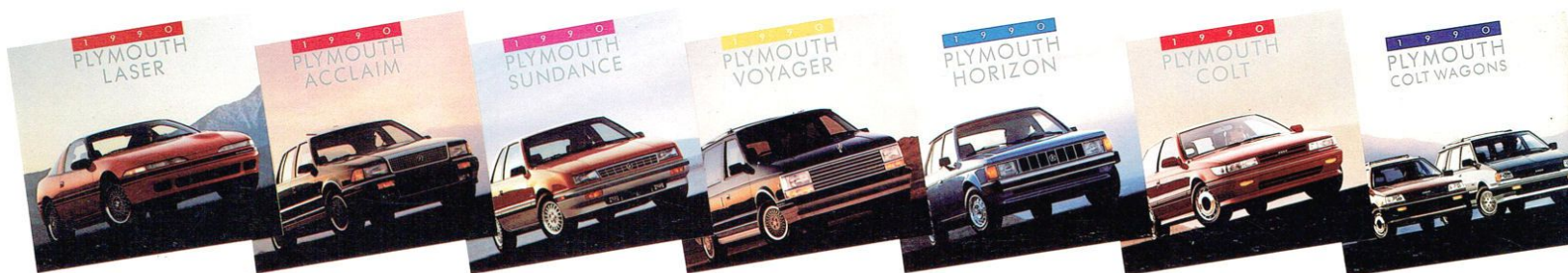
Plymouth and the U.S. Forest Service

Proud Partners in the National Forest Scenic Byways Program.

All product illustrations and specifications are based upon current information at the time of publication approval. Although descriptions are believed correct, complete accuracy cannot be guaranteed. Chrysler Motors reserves the right to make changes from time to time, without notice or obligation, in prices, specifications, colors and materials, and to change or discontinue models. See your dealer for the latest information.

Plymouth and MOPAR are registered trademarks, and Sundance is a trademark of Chrysler Motors Corporation.

Buckle up for safety.



The name Plymouth will always stand for quality, plenty of standard features, and honest value. But today, car shoppers have a lot of choices. So we'd better have some darn good reasons for you to pick the new Plymouth...and we do. Plymouth Sundance for the '90s means contemporary styling, advanced technology, solid dependability, and safety-minded engineering innovations such as air bags, Unibelt shoulder restraints, and bumpers that exceed the federally mandated impact standards.

Our commitment to our customer is underscored by the latest J. D. Power survey,* which put Chrysler Motors ahead of all other domestic manufacturers in Customer Satisfaction for the third year in a row. Even more satisfying, Plymouth's full line of vehicles increased its ranking more than any other brand, import or domestic. Plymouth believes every American has the right to friendly treatment, honest service, and competent repairs. That's the mission of our 7/70 Limited Warranty, and it's part of our Corporate philosophy. So, while there are many cars you could choose to own, Plymouth for 1990 has more of what you're looking for.

*J.D. Power and Associates 1989 passenger car Customer Satisfaction Index of 1988 models.



Quality Worth Backing

All Chrysler Motors domestically built automobiles and light trucks now benefit from the 7/70 Power Train Limited Warranty. Upon expiration of the 12-month or 12,000-mile Basic Limited Warranty, coverage is extended on power train components to seven years or 70,000 miles.* This represents one of the most comprehensive original limited warranties available on cars and trucks built and sold in the United States, and points out Chrysler Motors' pride in building and backing its products the right way.

In addition to the 7/70 Power Train Limited Warranty described above, all domestically built Chrysler Motors automobiles offer the 7/100 Anticorrosion Limited Warranty. Your dealer will repair or replace at no charge outer body sheet metal panels found to have developed perforation (rust-through) in normal use up to seven years or 100,000 miles. See your dealer for a copy of the limited warranties.

*A deductible applies.

Plymouth Sundance

